



Wechat



Wechat



WhatsApp

马鞍山卡迈特液压机械股份有限公司

Maanshan Kamaite Hydraulic Machinery Shares CO.,LTD

工厂地址：安徽省当涂县经济开发区姑孰分园

Factory ADD: Gushu Branch Park, Dangtu Economic Development Zone, Anhui

电话 (Tel) : +86 (0) 13855570666 +86 (0) 13685557473

传真 (Fax) : 0555-2385058

(工厂) 网址 (Web) : <http://www.fengyuncn.net>

E-mail: 940588657@qq.com xiazhiqing20@126.com



马鞍山卡迈特液压机械股份有限公司

Maanshan Kamaite Hydraulic Machinery Shares CO.,LTD

创新

Innovation

效率

Efficiency

精品

Premium product



公司简介

马鞍山卡迈特液压机械股份有限公司是专业从事液压破碎锤整机、零配件的生产及批发业务。公司总部坐落在美丽的花园城市马鞍山，生产基地位于马鞍山市当涂县经济开发区姑孰分园，占地面积40余亩。公司主导产品有FY系列液压破碎锤、活塞、上下缸体，内外套，螺栓，扁销等配件。FY战神系列液压锤是我公司自行研制生产的具有世界一流品质和性能的高科技产品。

公司是中国目前破碎锤及其配件领域最具影响力的企业之一。公司选用最优质的合金钢材料，采用最先进的热处理工艺（真空渗碳技术），最合理的加工工艺，生产世界各品牌液压锤配件及一系列液压破碎锤，可为各品牌挖掘机及各品牌液压锤生产商及用户提供匹配产品，公司已通过ISO9001-2015质量管理体系等多项认证且有多项行业内专利。

公司在全国建立了完整的销售服务网络，产品销往全国各地，并出口到国外多个国家和地区。

公司下设：技术中心、生产中心、物流中心、销售中心、服务中心、企管部及财务部等7个分支机构，拥有一支优秀精良的团队。随着工厂现代化先进加工设备的启用，公司已进入一个更加辉煌的新时期。

Maanshan Kamaite Hydraulic Machinery Shares CO.,LTD is specialized in the production and wholesale of hydraulic breaker & spare parts. Our company's headquarters is located in the beautiful city Ma'anshan, and the production base is located in Danyang Industrial Park, Bowang District, Ma'anshan City, covering an area of more than 20 acres. The company's leading products include FY Ares series hydraulic breaker, pistons, cylinders, Thrust /Tool Bushs, Pins, Blots and other accessories. FY Ares series hydraulic breaker is a high-tech product with high quality and performance developed and produced by our company.

Our company is one of the most influential companies in the field of breakers & accessories in China. Our company uses the highest quality alloy steel raw materials, adopts the most advanced heat treatment technology (vacuum carburizing technology) and the most reasonable processing technology to produce hydraulic breaker products of all international brands Hammer accessories and large size inner valve hydraulic breakers can provide matching products for manufacturers and users of various brands of excavating machinery and brands of hydraulic hammers. Our company has passed ISO9001-2015 system and other certifications, Our company has many patents in the industry.

Our company has established a complete sales and service network throughout the country and exported to many foreign countries and regions.

The company consists of 7 branches: technical center, production center, logistics center, sales center, service center, Enterprise management department, Financial department etc., with an excellent team. With the use of modern advanced processing equipment in the factory, our company has entered a new and more glorious period.





液压破碎锤 Hydraulic Breakers



FY100



FY140



FY155



FY175

FY系列液压破碎锤 FY Series Hydraulic Rock Breaker

参数表 Specifications

规格 Specification		FY68	FY75	FY85	FY100	FY135	FY140	FY150
重量 Weight	kg	260	390	530	887	1570	1754	2520
长度 Length	mm	1347	1518	1737	1990	2200	2400	2430
液压油流量 Hydraulic Oil Flow	l/min	40-70	50-90	60-100	80-110	120-180	120-180	150-210
驱动油压 Driving Hydraulic Pressure	bar	110-140	120-150	130-160	150-170	160-180	160-180	160-180
打击频率 Blow Frequency	bpm	500-900	400-800	400-800	350-650	350-600	350-500	300-450
钎杆直径 Rod Diameter	mm	68	75	85	100	135	140	150
软管直径 Hose Diameter	inch	1/2	1/2	3/4	3/4	1	1	1
冲击力 Impact Force	kg.m	74	92	140	230	420	500	530
配用车重 Matching Excavator	ton	4-7	6-9	7-14	11-16	18-26	18-26	25-30

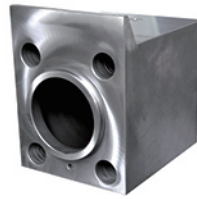
规格 Specification		FY155	FY165	FY175	FY180	FY190	FY200	FY210
重量 Weight	kg	2800	3200	3800	4100	4200	5200	6200
长度 Length	mm	2730	2810	3190	3300	3400	4000	4000
液压油流量 Hydraulic Oil Flow	l/min	180-240	180-240	210-290	230-290	230-290	230-290	230-290
驱动油压 Driving Hydraulic Pressure	bar	160-180	160-180	160-180	160-180	160-180	160-180	160-180
打击频率 Blow Frequency	bpm	300-450	150-350	200-350	200-350	200-350	200-350	200-350
钎杆直径 Rod Diameter	mm	155	165	175	180	190	200	210
软管直径 Hose Diameter	inch	1 $\frac{1}{4}$	1 $\frac{1}{4}$	1 $\frac{1}{4}$	1 $\frac{1}{4}$	1 $\frac{1}{4}$	1 $\frac{1}{4}$	1 $\frac{1}{4}$
冲击力 Impact Force	kg.m	700	920	1250	1360	1380	1450	1550
配用车重 Matching Excavator	ton	28-35	30-40	40-55	45-60	45-60	60-70	60-70



液压破碎锤配件 Hydraulic Hammer Accessories



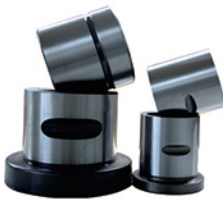
活塞
Piston



氮气室
Back Head



钎杆座
Front Head



钎杆套
Thrust/Tool Bush



钎杆
Chisel



长短螺栓
Through/Side Bolt



扁销
Pin



换向阀
Reversing
Valve



活塞环
Seal Housing



钎杆销
Tool Pin



充气阀
Gas Charging
Valve



充氮装置
Gas Charging
Kit



加工设备 Processing Equipment



高精度立式磨床
Vertical Grinder



数控外圆磨床
CNC Grinding Machine



数控内外圆磨床
CNC Grinding Machine



卧式加中心
Horizontal Machining Center



立式车磨复合机床
CNC turning-grinding Compound Machine



1450 内外圆磨床
1450 Grinding Machine



立式加中心
Vertical Machining Center/VMC



激光熔覆
Laser Cladding



数控车床
CNC Lathe



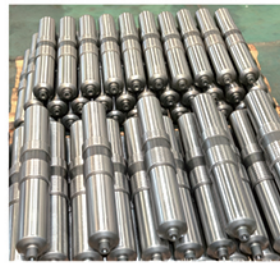
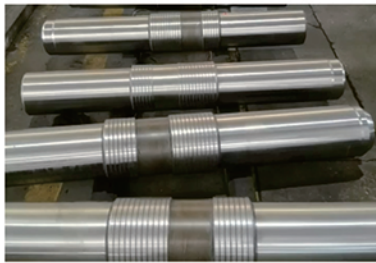
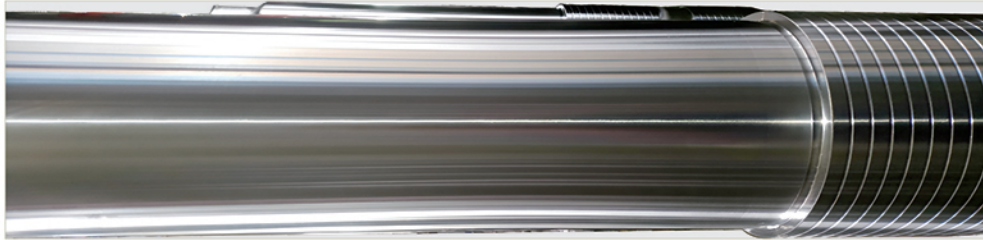
数控车床
CNC Lathe



数控双面铣床
CNC Double-sided Milling



精品活塞 Premium Quality Piston



- 新工艺-专利技术，世界先进热处理工艺
New technology –Patented technology, world advanced heat treatment technology
- 新材料-高品质合金钢材料
New materials – High-quality alloy steel materials
- 高硬度-减少活塞与缸体的拉伤，降低拉伤率
High Hardness–Reduce the damage to the cylinder body and piston, and reduce the cylinder pulling rate
- 耐腐蚀-先进的表面处理技术，有效抵抗活塞表面的环境腐蚀
Corrosion resistance – Advanced surface treatment technology effectively resists environmental corrosion on the piston surface

施工案例 Construction Case





液压属具 Hydraulic Accessory



快换接头
Quick Coupler



尺寸表 Specifications

型号 Model	Ydld Mini	Ydlk45 Ydlk50	Ydlk55	Ydlk60 Ydlk65	Ydlk70 Ydlk80	Ydlk90	Ydlk100 Ydlk110
直径 Diameter(mm)	25-40	45-50	50	50-70	70-80	80-90	90-120
压力 Pressure(kg/cm ²)	40-380	40-380	40-380	40-380	40-380	40-380	40-380
流量 Oil Flow(l/min)	10-20	10-20	10-20	10-20	10-20	10-20	10-20
配重挖机 Excavator(t)	1.5-4	4-7	5-8	9-19	17-23	23-30	33-45



甘蔗抓斗
Sugarcane Grapple

尺寸表 Specifications

型号 Model	Ydgz1300
重量 Weight(kg)	340
最大开口 Max Jaw Opening(mm)	1300
油缸容量 Cylinder Volume(ton)	4.0*2
配重挖机 Excavator(t)	6-9



棉花抓斗
Cotton Grapple

尺寸表 Specifications

型号 Model	Ydgc2400
重量 Weight(kg)	400
最大开口 Max Jaw Opening(mm)	2400
宽度 Width(mm)	1362
配重挖机 Excavator(t)	6-10



液压回转筛型斗
Hydraulic Rotating Skeletonbucket

尺寸表 Specifications

配重挖机 Excavator (ton)	宽度 Width (mm)	最大开口 MaxJaw Opening(mm)
6-10	640	1300
11-16	800	1540
17-20	1000	1880
21-24	1150	2140
25-30	1200	2200
31-35	1250	2250
36-40	1300	2300
41-45	1400	2350



木料爪斗
WOOD GRAPPLE

配件尺寸表 Specifications

型号 Model	Ydgm1300	Ydgm1600	Ydgm1800	Ydgm2300	Ydgm2500	Ydgm2700
最大开口 Max Jaw Opening(mm)	1300	1600	1800	2300	2500	2700
油缸容量 Cylinder Volume(ton)	4.0*2	4.5*2	8.0*2	9.7*2	12*2	14*2
配重挖机 Excavator(t)	4-6	7-11	12-16	17-23	24-30	31-50

配件尺寸表 Specifications

型号 Model	Ydgm1300	Ydgm1600	Ydgm1800	Ydgm2300	Ydgm2500	Ydgm2700
最大开口 Max Jaw Opening(mm)	1300	1600	1800	2300	2500	2700
油压 Oil Pressure(kg/cm ²)	110-140	120-160	150-170	160-180	160-180	180-200
工作流量 Operating Flux(l/min)	30-55	50-100	90-110	100-140	130-170	250-320
油缸容量 Cylinder Volume(ton)	4.0*2	4.5*2	8.0*2	9.7*2	12*2	14*2
配重挖机 Excavator(t)	4-6	7-11	12-16	17-23	24-30	31-50



抓夹器
GRAPPLE