



Nanchang Litian Engineering Machinery Co.,Ltd.
Factory Add. Hongshan road, Anyi county,
Nanchang city, Jiangxi province, P.R.C
Tel. 0791-83499996 0791-83499995
Fax. 0791-83499997



Lehrer(Guangzhou)Construction Machinery Trading Co.,Ltd.
Add. No. 2, Lianxinan road, Tianhe district, Guangzhou city,
Guangdong province, P.R.C
Tel. 0086-20-32232211 0086-20-32232611 0086-20-32232911
Mob. 0086-13160859616 WhatsApp 0086-13288653358

Nanchang Litian Engineering Machinery Co.,Ltd.

南昌市力天工程机械有限公司



We are an integrated modern manufacturing enterprise specializing in engineering machinery spare parts with precision casting, processing and sales.

Mainly products: excavator bucket tooth, adaptor, side cutter, track cylinder, track assembly, bucket, link H, side link etc. All are applicable to CAT, KOMATSU, DAEWOO, DOOSAN, HITACHI, VOLVO, HYUNDAI, and domestic excavators.



3-6	挖斗 EXCAVATOR BUCKET
7-8	工字架、连杆 EXCAVATOR H LINK & SIDE LINK
9	涨紧弹簧总成 TRACK ADJUST CYLINDER & SPRING ASSY
10	涨紧油缸 TRACK ADJUST CYLINDER
11	涨紧弹簧、拉杆 TRACK SPRING & SPRING-SUPPORT ROD
12	U型架、压盘 YOKE & SPRING-SUPPORT PLATE
13-14	涨紧系列目录 TRACK ADJUST SERIES CATALOG
15-16	铸造斗齿、锻造斗齿 CASTING BUCKET TEETH & FORGED BUCKET TEETH
17-18	齿座、刀角板、耐磨块 ADAPTOR, SIDE CUTTER & WEAR-RESISTANT BLOCK
19	轴承、回转牙箱、齿圈、回转一级总成、回转立轴 BEARING, SWING BEARING BOX, ROTARY PRIMARY ASSEMBLY & ROTARY SHAFT COMPONENTS
20-22	回转支承 SLEWING BEARING
23-24	轴套 EXCAVATOR BUSH
25	斗轴 EXCAVATOR PIN
26	斗耳、马拉头 EAR & ARM HEAD
27	垫片 WASHER
28	斗齿肖、螺丝、链通、链肖 BUCKET TEETH PIN & LOCK, BOLT & NUT, TRACK BUSH & PIN
29	护链架、托轮座、引导轮前叉、镗孔机 TRACK GUARD, TOP ROLLER BASE, IDLER BRACKET, HOLE DRILLING MACHINE
30	打链嘴、黄油枪、黄油嘴、黄油盘、电动黄油枪、黄油筒、柴油泵 GREASE INJECTOR, GREASE GUN, GREASE FITTING, GREASE COVER, DIESEL PUMP, ELECTRIC GREASE GUN & GREASE DURM
31	链条、链板、支重轮 TRACK CHAIN, TRACK SHOE, DOWN ROLLER
32	引导轮、托轮、驱动齿 IDLER, TOP ROLLER, SPROCKET
33	推土机支重轮、引导轮、托轮、齿块 BULLDOZER DOWN ROLLER, IDLER, TOP ROLLER, SEGMENT
34	推土机、平地机刀板刀角 BULLDOZER END BIT & CUTTING EDGE, GRADER BLADE
35-36	挖掘机机型大全 EXCAVATOR MODELS

企业名称：南昌市力天工程机械有限公司
企业法人：凌华峰
占地面积：42亩（28,000平方米）
员工人数：超过100人
注册资金：RMB 10,000,000
目标产值：突破RMB 100,000,000

南昌市力天工程机械有限公司于2010年正式投产，公司主要生产挖掘机、推土机等工程机械耐磨配件，产品直销国内外，如东南亚、南非、阿拉伯等发展中国家和地区。

目前公司旗下拥有三大主体：精密铸造、智能化机械加工以及网络销售。公司是铸造与加工相结合、产销一体的现代化机械生产企业。我司采用网络平台与国内实体仓储相结合的销售模式，急客户之所需。

铸造产品采用精密铸造蜡模工艺。先进的热处理设备和光谱检测仪确保了产品质量稳定性。智能化数控设备、智能化焊接机器人、智能化切割等国内外先进设备仪器，为我司产品实现标准化和统一化打下坚实的基础，也确保我司产品质量能超越同行，达到国际标准。

力天旗舰销售部南昌沃克、广州力天等大型一线城市驻点为我司开拓国际国内市场提供了平台。我司全体人员积极与客户互动，及时了解客户最新动态，实现与客户零距离接触。与此同时，我司在全国各大城市都拥有自建仓储与合作物流，确保了货源充足，真正做到急客户所急。

打造国际工程机械耐磨配件一流供应平台是我司发展的必然目标。具有战斗力的合作团队是我司前进过程中的重要保障，扩大市场占有率、创造行业和客户心中具有一定价值的力天品牌，是我们力天的不懈追求！

Enterprise name: NANCHANG LITIAN ENGINEERING MACHINERY CO., LTD.
Legal person: HUA FENG LING
Land area: 28,000 M2
Employees: 100-200
Registered capital: CNY TEN MILLION
Output target: CNY OVER ONE HUNDRED MILLION

Our company, which was officially put into operation in 2010, mainly manufactures and sells excavator wear-resistant spare parts. Our market covers the whole domestic provinces, all the developing countries and areas, such as southeast Asia, South Africa, Arabia countries and so on.

We own precision casting workshops, intelligent machinery processing workshops, and the network sales teams. The combination of network sales and domestic warehouse sales models shorten the delivery time.

Precision casting wax mould process, advanced heat treatment equipment and spectral detector ensure the stability of quality. Machining workshops are equipped with intelligent CNC equipment, intelligent welding robot, intelligent cutting and other domestic and imported advanced equipment, all these make the product standardization and unification come true, also ensure the product quality in line with the international market and even outpace the competitors.

LITIAN flagship sales departments, NANCHANG WORKER, GAUNGHZHOU LITIAN and other branches in first-tier cities are conducive to developing international and domestic market. We interact with customers and pay attention to the market, master the first-hand required information of customers. Our self-established warehousing and logistics ensure customers' urgent requirements.

Our aim is to build a first-class platform of wear-resistant parts. A combat team is the guarantee of advancing pace. To expand the market share, create valuable brand for the industry and customers is our constant pursuit.



LT-0001



450宽-EX30微挖

LT-0002



450宽-PC30微挖

LT-0003



微挖200宽

LT-0013



800宽-SK120土方

LT-0014



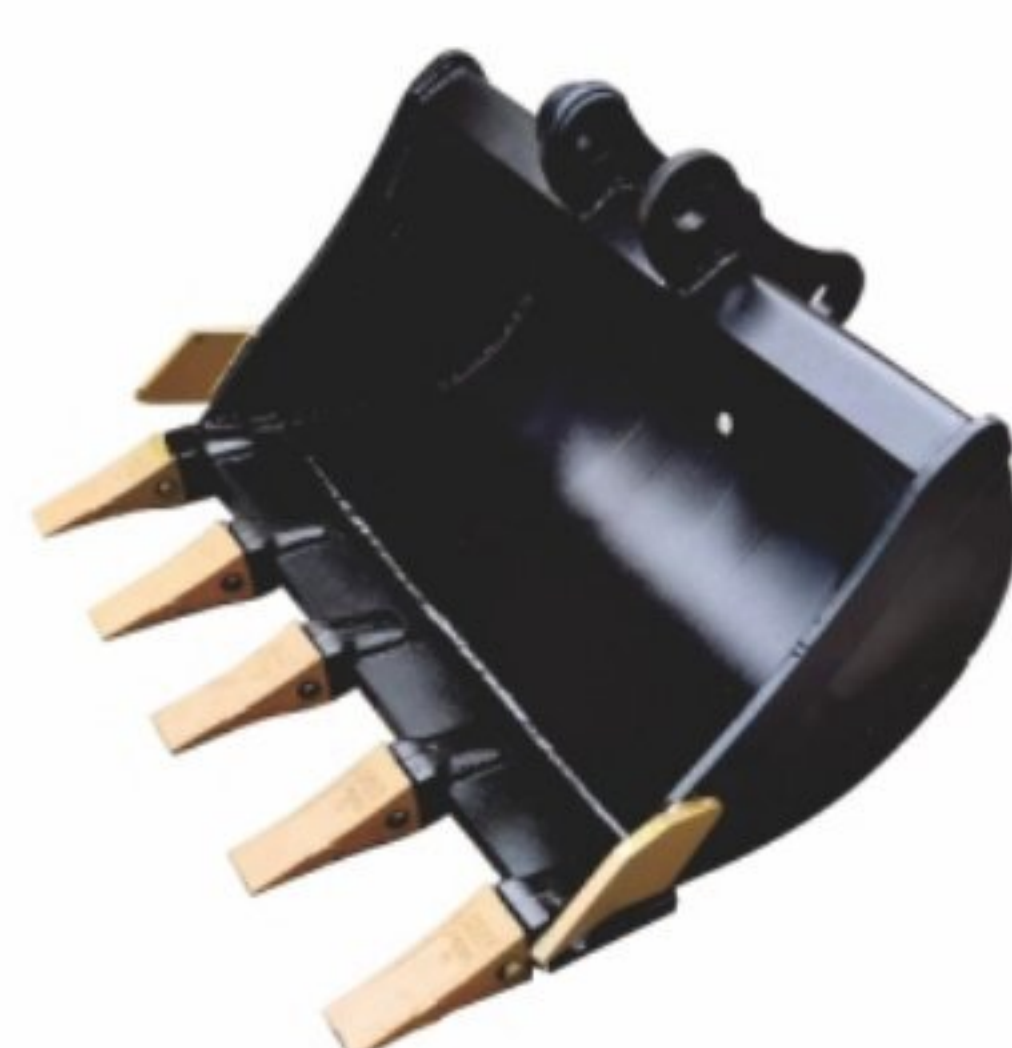
1方-EC210土方

LT-0015



1000宽-EX200土方斗

LT-0004



微挖800宽

LT-0005



500宽-E303HDR

LT-0006



700宽-E303HDR-1

LT-0016



1000宽-PC200土方

LT-0017



3.2方-ME550

LT-0018



1.2方-凯斯240HDR

LT-0007



700宽-SY55-B款加强斗

LT-0008



900宽-60型

LT-0009



1530宽-60型

LT-0019



1.2方-柳工925

LT-0020



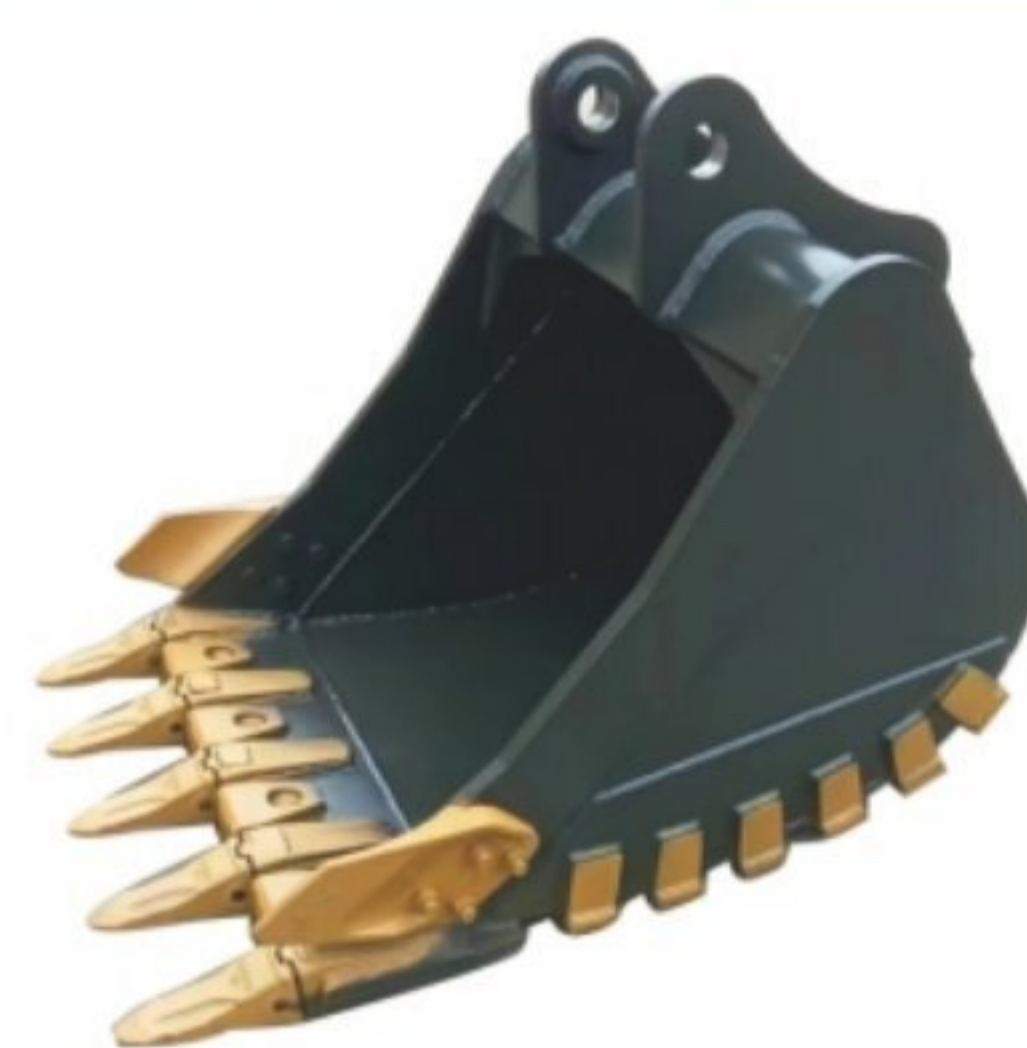
1.3方-三星MX292

LT-0021



1.5方-SY245

LT-0010



0.6方-R140岩石斗

LT-0011



0.7方-E312岩石斗1000宽

LT-0012



0.65方-SY155

LT-0022



1.35方-E325D

LT-0023



1.54方-E326

LT-0024



1.6方-LG936

LT-0025



1.6方-SY335

LT-0026



1.6方-徐工335

LT-0027



1.8方-ZAX380

LT-0028



0.58方-E312网格斗

LT-0029



2000宽-EX120

LT-0030



三角挖斗

LT-0031



网格斗

LT-0032



松土器

LT-0033



松土器E303

LT-0034



松土器SK120



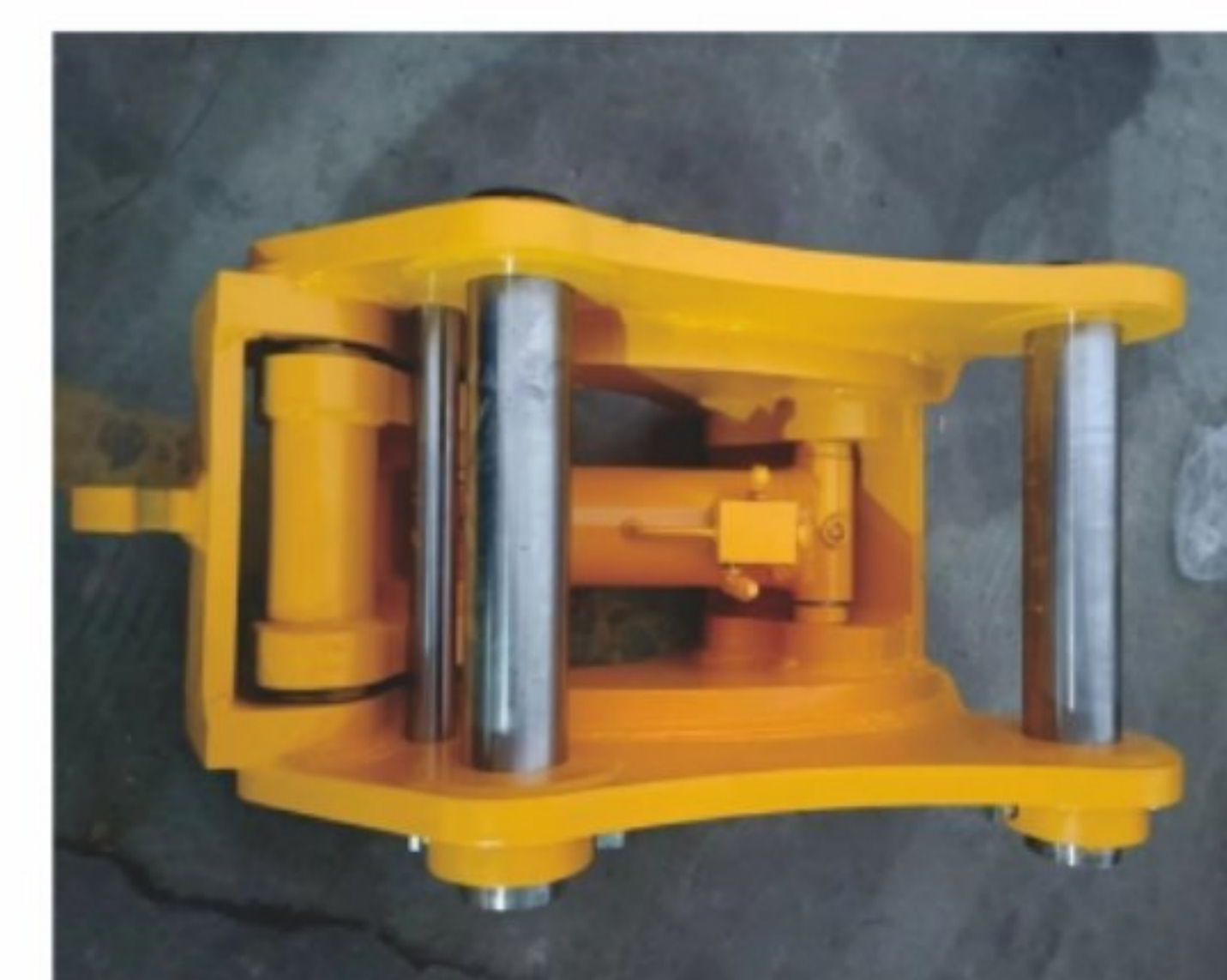
LT-0035



LT-0036



LT-0037



LT-0038



LT-0039



LT-0040



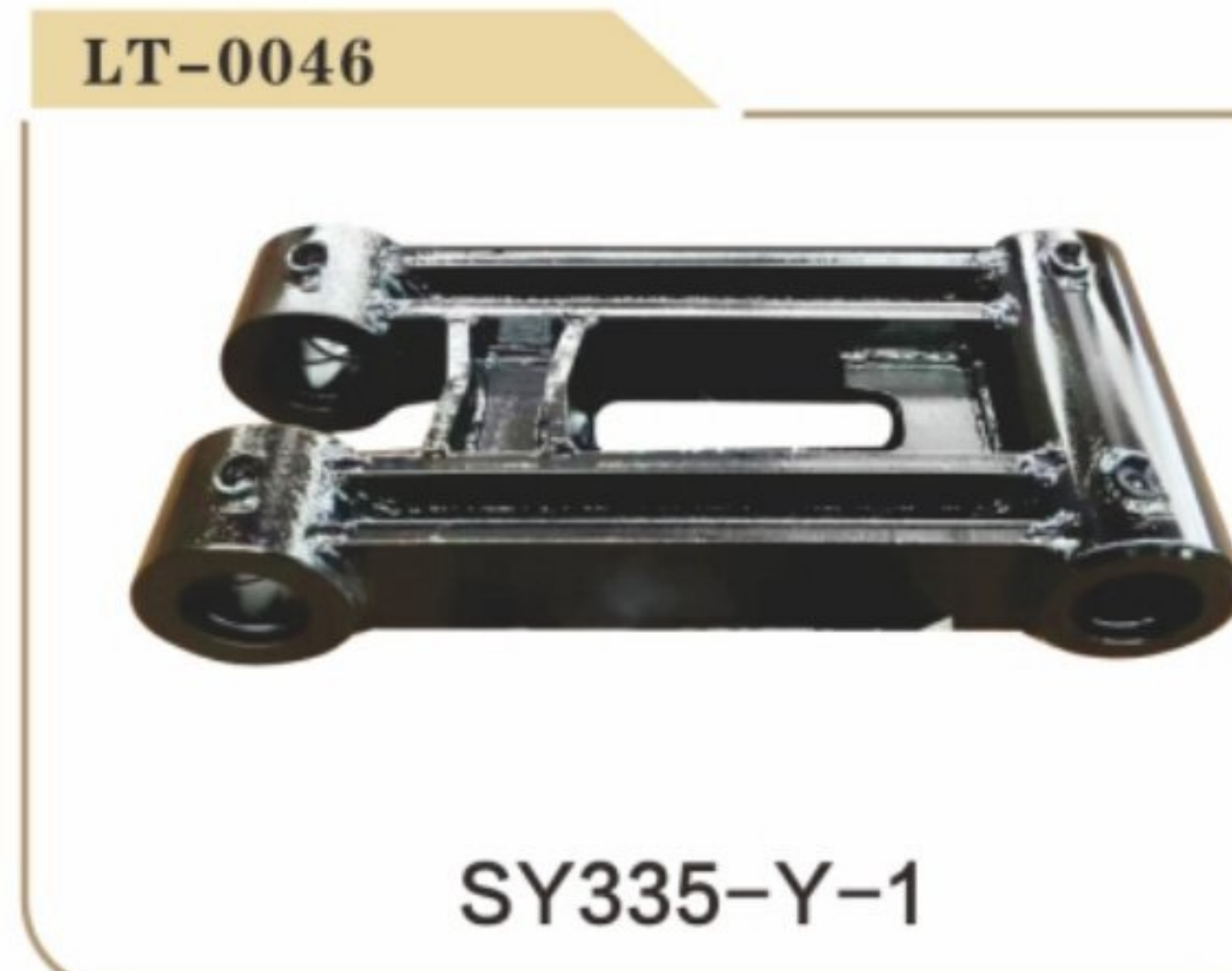
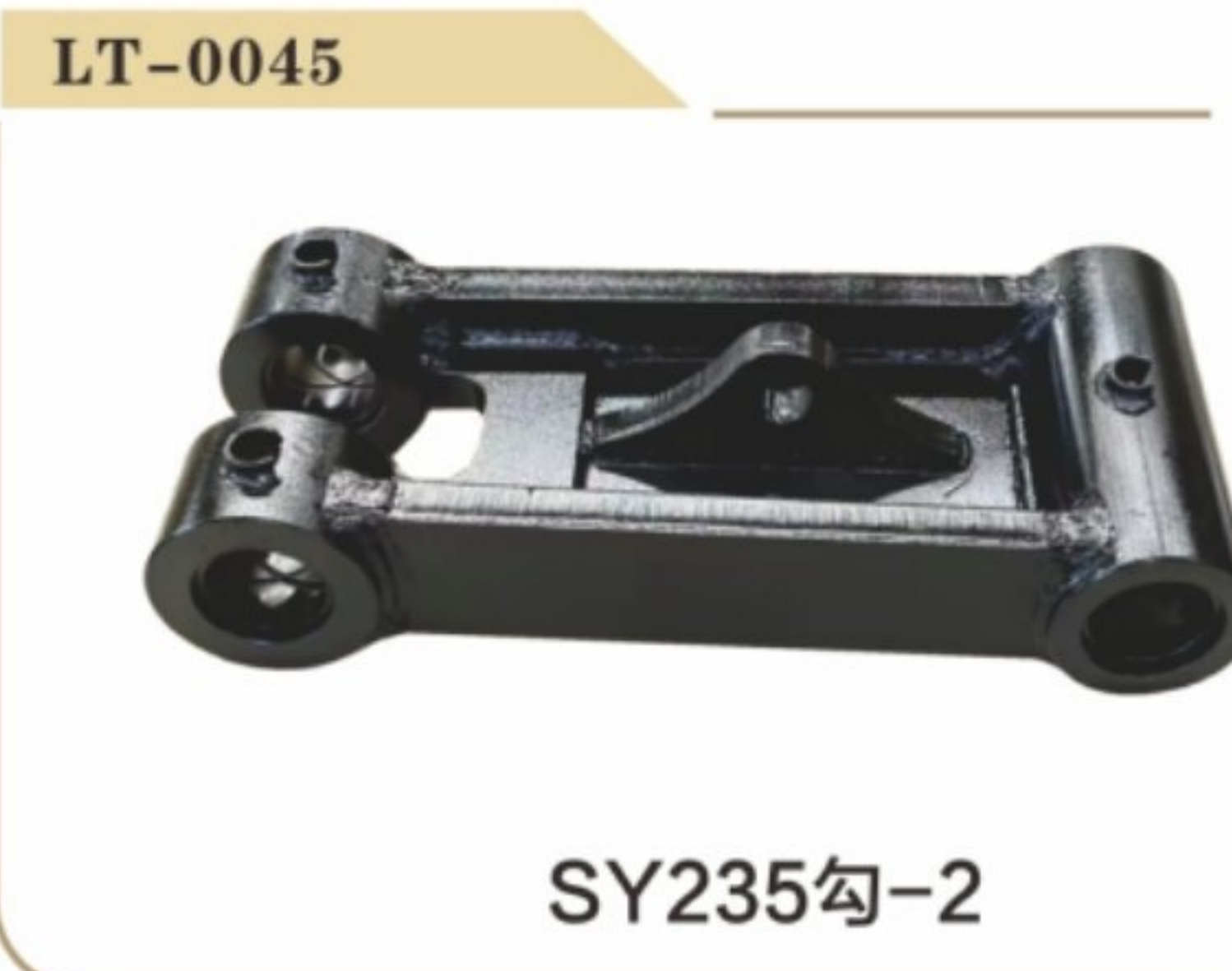
LT-0041

BREAKER HAMMER DATA 破碎锤参数

SPECIFICATION	UNIT	ZL40	ZL45	ZL53	ZL68	ZL75	ZL85	ZL100	ZL100A	ZL135	ZL135A	ZL140	ZL140A	ZL155
BODY WEIGHT	kg	53	71	89	156	214	282	479	503	850	846	920	956	1313
TOTAL WEIGHT	kg	70	95	158	273	334	559	761	786	1653	1680	1774	1809	2577
HYDRALIC OIL FLOW	l/min	15~25	20~30	25~50	40~70	50~90	60~100	80~110	150~170	130~150	145~180	120~180	120~180	180~240
HYDRALIC OIL PRESSURE	kg/cm2	90~120	90~120	90~120	110~140	120~150	130~160	150~170	80~110	160~180	160~180	160~180	160~180	160~180
STRIKE FREQUENCY	bmp	800~1400	700~1200	600~1100	500~900	400~800	400~800	350~700	350~700	400~600	360~460	350~500	350~500	300~450
DRILL ROD DIA.	mm	40	45	53	68	75	85	100	100	135	135	140	140	155
COUNTER WEIGHT	ton	0.8~2.5	1.2~3.0	2.5~4.5	4~7	6~9	7~14	10~15	15~18	18~26	18~26	18~26	18~26	28~35

EXCAVATOR BUCKET 挖斗 对照表

Machine weight t	Bucket capacity m3	Type	Raw material
1.5~6.0	0.10 ~ 0.30	Earth bucket, rock bucket, ripper bucket, ditch bucket, grid bucket, grab bucket, cleaning bucket, tilt bucket...	Q235, Q345B, Q355,NM360, HARDOX400, HARDOX500...
6.3	0.25 ~ 0.40		
8.0	0.35 ~ 0.60		
10.0	0.50 ~ 0.80		
12.5	0.60 ~ 1.00		
15.0	0.70 ~ 1.20		
20.0	0.95 ~ 1.60		
25.0	1.20 ~ 2.00		
32.0	1.40 ~ 2.40		
40.0	1.80 ~ 3.00		
50.0	2.50 ~ 4.00		
63.0	3.50 ~ 5.50		
>70.0	3.00 ~ 6.20		



KOMATSU	E330C	EX100	SK330	DX60 ACE-10	EC290	R245VS	SH130-6
PC18	E336D	EX120	SK350	DX65-9C PLUS	EC300DL	R260	SH180LC-6
PC20	E330GC	EX200-1	SK350-8	DX75-9C ACE	EC350D	R260-7	SH210-6
PC30	E336GC	EX200-2	SK390XD-10	DX75-9C PLUS	EC350DL	R265	SH220LC-6
PC40	E345GC	EX200-3	SK350DLC-10	DX75-10	EC360	R275LVS PRO	SH210LC-5LR
PC55	E349GC	EX200-5	SK400	DX130-9C	EC380	R290	SH240-6
PC56	E340	EX200-6	SK450	DX150W-9C	EC380DL	R290-3	SH260LC-6
PC60	E345	EX230	SK460	DX150W-10	EC460	R290-7	SH240-5LR
PC78	E349	EX270	SK460-8	DX150WE-9C	EC480	R305	SH300-6
PC90	E350	EX300-1	SK480	DX150LC-9C	EC480DL	R305RC	SH360HD-6
PC100	E374	EX300-5	SK480LC-8	DX200	EC500	R305LVS	SH380LHD-6
PC120	E450	EX330	SK485XD-10	DX200-9C	EC750DL	R320	SH130-5
PC130	HITACHI	EX350	SK500XD-10 SuperX	DX210W-9C	EC950EL	R320-7	SH210-5
PC150	ZX60	EX400	SK550XD-10 SuperX	DX215-9C	HYUNDAI	R335-7	SH220LC-5
PC160	ZX60C-5A	EX400-3	SKO7N2	DX215-9C ACE	R55-7	R350LVS	SH240-3
PC200	ZX60-5A	EX450	DAEWOO	DX220LC-9C	R60	R375LVS	SH240-5
PC220	ZX70-5A	ZAX55	DH55	DX220LC-9C ACE	R60-5	R395LVS	SH300-5
PC240	ZX75-5A	ZAX60	DH60-7	DX225	R60-7	R450-7	SH360HD-5
PC300	ZX120	ZAX70	DH80	DX230LC-9C	R70-7	R495LVS	SH380-5
PC350	ZX120-5A	ZAX120	DH130	DX245LC-9C ACE	R80	R505LVS	SH480HD-6
PC360	ZX130-5A	ZAX200	DH150	DX260	R80-7	R550LVS	SH500LHD-6
PC400	ZX195-5A	ZAX200-6	DH150-7	DX270LC-9C ACE	R110-7	R520L-9VS	SH700LHD-5B
PC450	ZX200	ZAX230	DH220	DX300	R110VS	R850L-9VS	SH60
PC650	ZX200-5A	ZAX240-3	DH220-5	DX300LC-9C	R115VS	KATO	SH75
PC750	ZX200-5G	ZAX330	DH225	DX305LC-9C ACE	R130	HD250	SH100
PC850	ZX210	ZAX350	DH225-7	DX360LC-9C	R130-3	HD307	SH120
PC1250	ZX210LC-5A	ZAX360	DH258	DX370	R130-5	HD450	SH120A3
CAT	ZX210k-5A	KOBELCO	DH258-7	DX380	R130-7	HD450-5	SH120Z3
E303	ZX230	SK30	DH280	DX380LC-9C	R140-7	HD450-7	SH130
E305	ZX240	SK60	DH290	DX450LC-9C	R150	HD500	SH135
E306	ZX240-5A	SK60-8	DH300	DX490LC-9C	R150-7	HD512	SH200
E307	ZX250	SK60-10	DH300-5	DX500LC-9C	R200	HD550	SH200A1
E70B	ZX250LC-5A	SK75	DH300-7	DX500LC-9C ACE	R200-5	HD700	SH200A3
E120B	ZX250k-5A	SK75-8	DH320	DX520LC-9C	R200-7	HD700-5	SH200A5
E311	ZX260LCH-5A	SK100	DH330	DX560LC-9C ACE	R205VS	HD770	SH200/H
E312B	ZX280	SK120	DH330-3	DX800LC-9C	R210-3	HD800	SH210
E312C	ZX300-5	SK130-8	DH360	VOLVO	R210-5	HD820	SH225
E312D	ZX300-5A	SK140	DH360-5	EC55	R210-7	HD900	SH240
E312GC	ZX330-5A	SK140LC-8	DH370	EC55D	R210-9	HD900-7	SH260
E315	ZX350	SK200	DH370-7	EC60D	R215	HD820	SH265
E318	ZX360	SK200-10 SuperX	DH380	EC75D	R215-7	HD820V	SH280
E200B	ZX360H-5A	SK210	DH400	EC80	R215-9	HD820R	SH300
E320B	ZX360k-5A	SK210LC-10 SuperX	DH420	EC120D	R215VSN	HD512R	SH330A3
E320C	ZX490LCH-5A(PLUS)	SK220-3	DH500	EC140	R210WVS	HD1023	SH340
E320D	ZX500LCH-5A	SK230	DOOSAN	EC200	R215VS	HD1250	SH350
E320GC	ZX690LCH-5A	SK245-10 SuperX	DX20Z	EW205D	R215VS PRO	HD1250-5	SH360
E323	ZX890LCH-5A	SK250	DX55-9C ACE	EC210	R220	HD1430	SH400
E324	HITACHI	SK260	DX60	EC220	R220-5	HD1430R	SH430
E324D	EX30	SK260LC-10 SuperX	DX60W-9C	EC220D	R220-9	HD2045III	SH460
E325	EX40	SK210D-10	DX60W ECO	EC220DL	R225	SUMITOMO	SH470
E325D	EX55	SK285LC-10 SuperX	DX60W ECO-1	EC240	R225-7	SH75X-3B	
E329D	EX60	SK305LC-10 SuperX	DX60E-9C ACE	EC250D	R225LVS	SH80-6	
E330B	EX70	SK300	DX60E-10	EC250DL	R235	SH80-6B	



LT-0081



涨紧弹簧

LT-0082



涨紧弹簧

LT-0083



涨紧弹簧

LT-0084



涨紧弹簧

LT-0085



CX135

LT-0086



E306

LT-0087



E306

LT-0088



E307

LT-0089



E329D拉杆筒

LT-0090



E336D

LT-0091



EC55

LT-0092



HD1430

LT-0093



JCB183

LT-0094



KY60

LT-0095



PC35

LT-0096



R60

LT-0097



SH300

LT-0098



E336D套筒

LT-0099



E336D套筒

LT-0100



E320D

LT-0101



EC210

LT-0102



DH300缺口

LT-0103



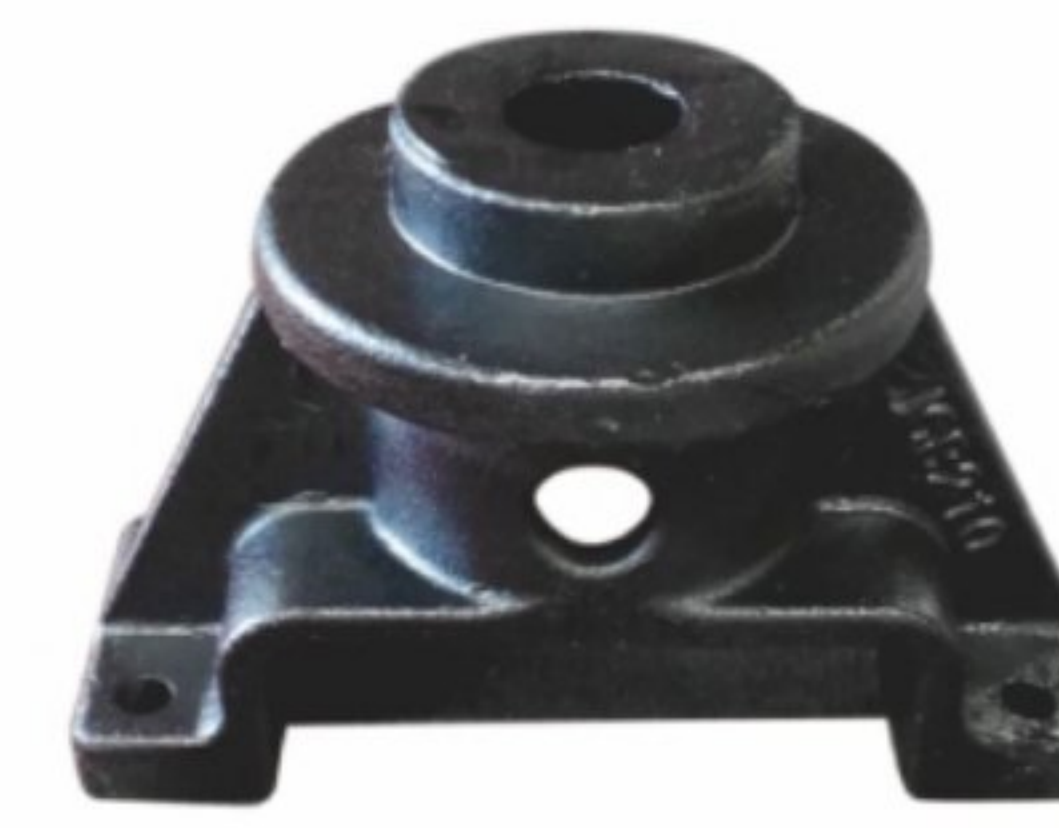
EX60

LT-0104



HD820

LT-0105



JCB210

LT-0106



PC200-7

LT-0107



PC300-5

LT-0108



R225-7

LT-0109



SH200

LT-0110



SK200

LT-0111



DH300缺口

LT-0112



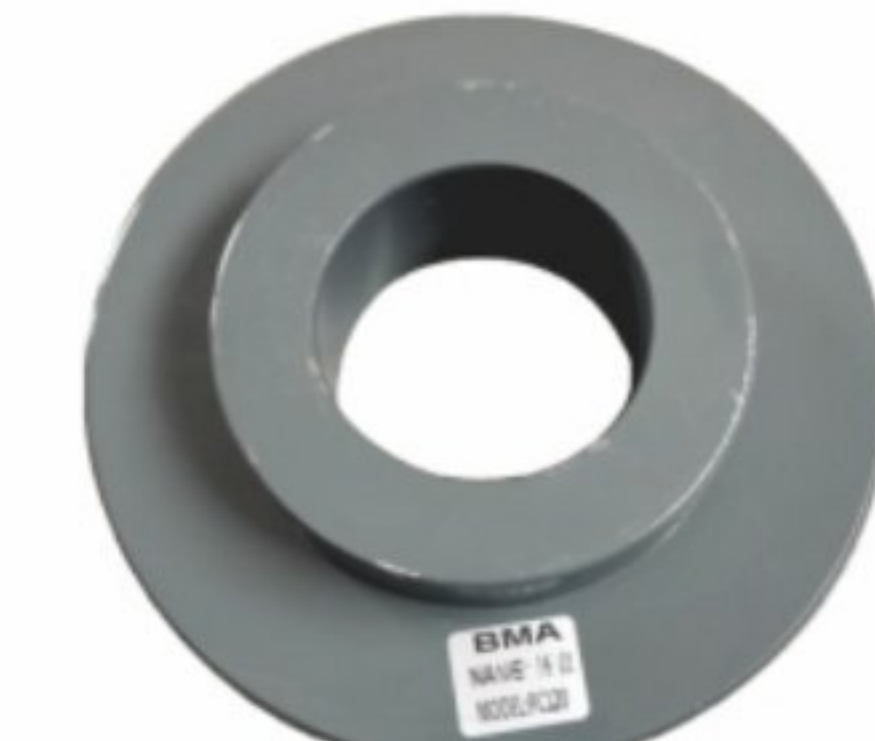
E312D

LT-0113



HD820

LT-0114

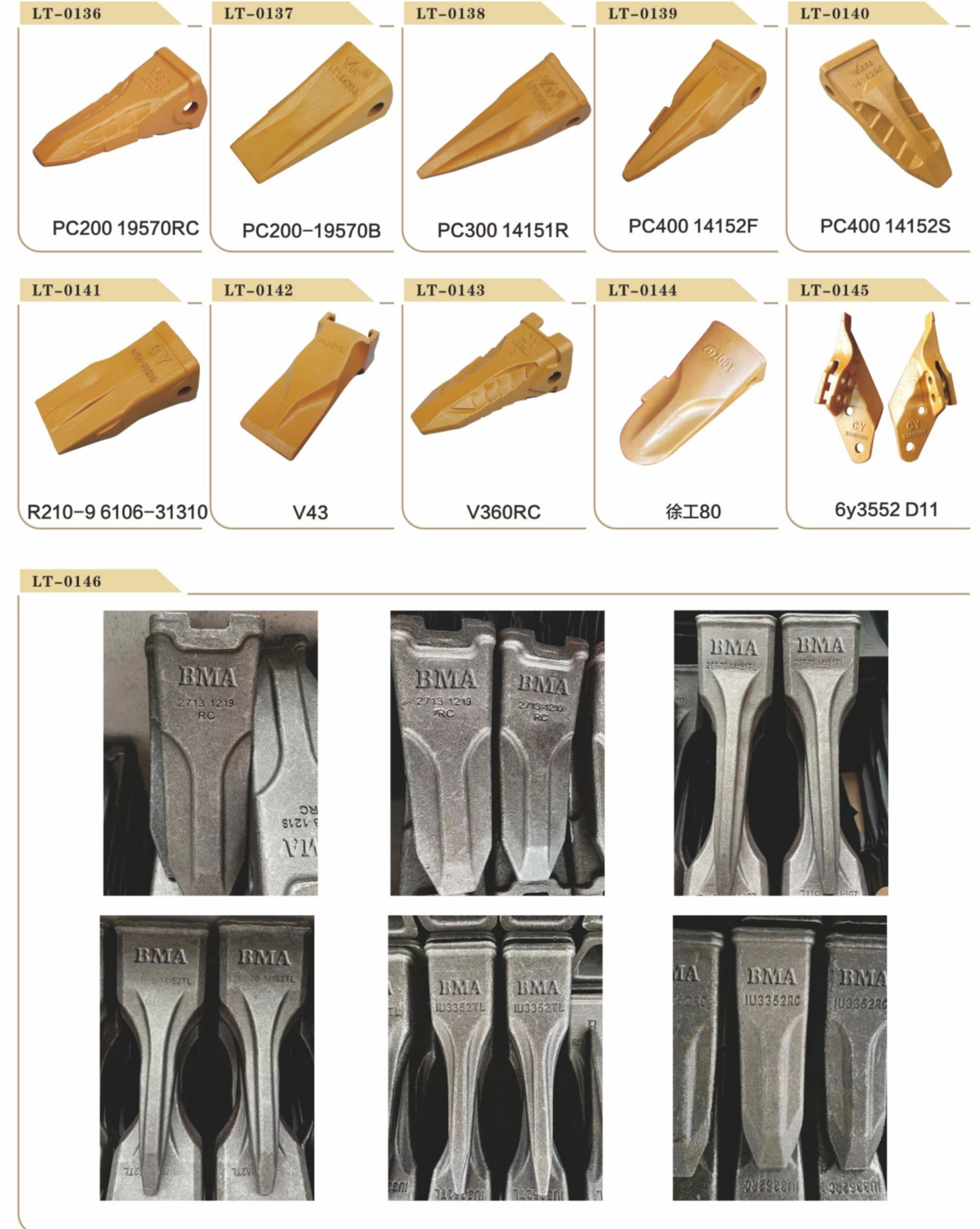


PC120

LT-0115



SK55



LT-0187



PC200-7行走齿圈

LT-0188



ZAX200-3行走齿圈

LT-0189



DH220-5回一总成

LT-0190



E200B回一总成

LT-0191



PC200-8回一总成

LT-0192



SK250-8回一总成

LT-0193



PC200-7回转立轴

LT-0194



SK200-8回转立轴

LT-0195



HYD Pump Bearing

LT-0196



滚针轴承
Kingpin Bearing

LT-0197



行走轴承L639249
Travel Bearing

LT-0198



行走轴承SF4815
Travel Bearing

LT-0199



PC120-6回转

LT-0200



PC200-6回转

LT-0201



PC200-8回转

LT-0202



E320C回转

LT-0203



DH220-3

LT-0204



MS120-8

LT-0205



R60-7

LT-0206



SK55

LT-0207



SK140-8

LT-0208



ZAX225

LT-0209

