

EXCAVATOR 1.5 TON - 6 TON



EXCAVATOR

Warning Light



Driving console



Rubber Tracks



Cylinder Upper



Cabin



Pedals



Bulldozer



LED light



Engine compartment



Stop valve





EXCAVATOR

Color options



QL-10

Configuration parameter

Performance parameters

• Engine	KOOP
• Emission standard	EURO5
• Power	7KW
• Engine speed	3000rpm
• Track type	180°72°37
• Bucket capacity	0.025m³

Machine size

• Dimension Length*Width*Height	2800*940*2200mm
• With cabin height	2250mm
• Minimum length	2400mm
• Minimum ground clearance	90mm

Working range

• Max. Digging Height	2550mm
• Max. Dumping Height	1750mm
• Max. Digging Depth	1600mm
• Max. Digging Radius	3050mm



EXCAVATOR

Color options



QL-12

Configuration parameter

Performance parameters

• Engine	KOOP
• Emission standard	EURO5
• Power	7KW
• Engine speed	3000rpm
• Track type	180°72°37
• Bucket capacity	0.025m³

Machine size

• Dimension Length*Width*Height	2850*940*2200mm
• With cabin height	2250mm
• Minimum length	2400mm
• Minimum ground clearance	90mm

Working range

• Max. Digging Height	2600mm
• Max. Dumping Height	1750mm
• Max. Digging Depth	1750mm
• Max. Digging Radius	3100mm



MINI EXCAVATOR

Color options



QL-15

Configuration parameter

Performance parameters

• Rated power	8.6KW
• Standard Bucket Capacit	0.02m ³
• Wheel distance	770mm
• Track total length	1090mm
• Platform ground clearance	380mm
• Platform turning radius	733mm
• Chassis width	800-950mm
• Track width	180mm
• Track height	320mm

Working range

• Digging ground radius MAX	2400mm
• Digging depth MAX	1650mm
• Dingg height MAX	2490mm
• Unloading height MAX	1750mm
• Swing radius MIN	1190mm
• Digging radius MIN	1320mm
• Dozer blade maximum lifting height	175mm
• Dozer blade maximum dig depth	325mm

Dimension

• Total width	1090mm
• Total height	2200mm
• Total length	2650mm
• Working weight	1000kg
• Engine	Koop EURO5 or B&S EPA Eneigne



MINI EXCAVATOR

Color options



QL-17

Configuration parameter

Performance parameters

• Rated power	12KW or 14KW
• Standard Bucket Capacity	0.02m ³
• Wheel distance	770mm
• Track total length	1090mm
• Platform ground clearance	380mm
• Platform turning radius	733mm
• Chassis width	910mm
• Track width	180mm
• Track height	320mm

Working range

• Digging ground radius MAX	2400mm
• Digging depth MAX	1650mm
• Dingg height MAX	2490mm
• Unloading height MAX	1750mm
• Swing radius MIN	1190mm
• Digging radius MIN	1320mm
• Dozer blade maximum lifting height	175mm
• Dozer blade maximum dig depth	325mm

Dimension

• Total width	1090mm
• Total height	2200mm
• Total length	2550mm
• Working weight	1300kg
• Engine	China engine or Kubota D722



MINI EXCAVATOR

Color options



QL-20

Configuration parameter

Performance parameters

• Rated power	18.1KW
• Standard Bucket Capacity	0.03m ³
• Wheel base	1100mm
• Total length of track	1300mm
• Ground clearance of platform	380mm
• Tail turning radius of platform	933mm
• Chassis Width	1100mm
• Width of track	180mm
• Height of track	320mm

Working range

• Mix.digging radius	2400mm
• Max.digging depth	1800mm
• Max.digging height	2740mm
• Max.dumping height	1750mm
• Max. vertical digging depth	1320mm
• Min.turning radius	1190mm
• Max. lefting height of shovel	325mm
• Max.digging depth of shovel	175mm

Dimension

• Total width	1100mm
• Total height	2310mm
• Total length	2550mm
• Working weight	1700kg
• Engine	China Laidong LD385



MINI EXCAVATOR

Color options



QL-25

Configuration parameter

Performance parameters

• Rated power	18.1 or 15.6
• Standard Bucket Capacity	0.06
• Max digger force	14
• Wheel base	820
• Tail turning radius of platform	1125

Working range

• Mix.digging radius	3860mm
• Max.digging depth	2050mm
• Max.digging height	3365mm
• Max.dumping height	2385mm
• Max. vertical digging depth	1955mm
• Min.turning radius	1125mm
• Dozer blade maximum lifting height	230mm
• Dozer blade maximum dig depth	275mm
• Swing boom degree left	75(degree)
• Swing boom degree right	45(degree)

Dimension

• Total width	1100mm
• Total height	2310mm
• Total length	2550mm
• Operating Weight	2500kg
• Engine	China Laidong 385 or Yanmar 380F



MINI EXCAVATOR

Color options



QL-30

Configuration parameter

Performance parameters

• Rated power	18.1KW or 15.6KW
• Standard Bucket Capacity	0.08m ³
• Ground clearance MINI	458mm
• Ground pressure	38mm
• Track gauge	950mm
• Track width	230mm
• Ground length on ground	1900mm

Working range

• Mix.digging radius	4023mm
• Max.digging depth	2150mm
• Max.digging height	3714mm
• Max.dumping height	2488mm
• Slewing angle	360(Degree)
• Grade ability	25(Degree)
• Travel speed	2.2Km/h
• Swing boom degree left	75(Degree)
• Swing boom degree right	45(Degree)

Hdraulic system

• Main pump	Triple pump
• Main pressure	18Mpa
• Max. Ram of the pump	2500R/min
• Pumo displacement	25Ml/r

Dimension

• Total width	1200mm
• Total height	2128mm
• Total length	4082mm
• Working weight	2500kg
• Engine	Laidong 385 or Yanmar 380F



MINI EXCAVATOR

Color options



QL-35

Configuration parameter

Performance parameters

• Rated power	14KW
• Standard Bucket Capacity	0.07m ³
• Max digger force	19.5kn
• Rotation speed	9.5Rpm
• Walking speed	2.6Km/h/4.5Km/h
• Fuel capacity	26L
• Max flow rate	1.216L/CC
• Rated working pressure	20.6mpa

Working range

• Max.digging depth	2430mm
• Max.digging height	3980mm
• Max.dumping height	2610mm
• Mix.digging radius	4136mm
• Minimum gyration radius of tail	750mm
• Working device gyration radius	1850mm
• Boom side swing	75/55 (Degree)
• Minimum ground clearance	230mm

Dimension

• Total width	1300mm
• Total height	2380mm
• Total length	3850mm
• Working weight	3000kg
• Engine	Japan Kubota D1105 engine
• Hydraulic pump	Piston Motor
• Walking motor	Famous Lectra brand
• Swing motor	Famous Eaton Brand
• Speed	Double speed
• Remark	Swing boom with adjustable track



EXCAVATOR

Color options



QL-60

Configuration parameter

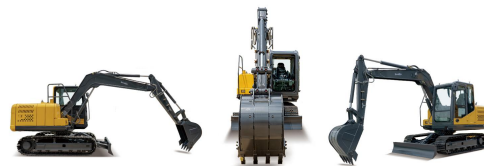
Performance parameters

• Engine	Yanmar
• Engine power	35.5kw
• Machine weight	6Ton
• Bucket capacity	0.21cbm
• Main pump	rexroth
• Control valve	parker
• Travel motor	korean brand
• Travel speed high and low	4.1/3.0km/h
• Ground specification pressure	32kpa
• Grade ability	70
• Digging force	37.7kn
• Boom length	3000mm
• Arm length	1600mm
• Maximum digging depth	3820mm
• Maximum digging height	5760mm
• Maximum unloading height	4030mm
• Maximum digging radius	6155mm
• Minimum turning radius	2205mm
• Transport length	5855mm
• Transport arm height	2580mm
• Wheelbase	1950mm
• Radius of gyration platform end	1690mm
• Counter weight ground clearance	720mm
• Track gauge	1485mm
• Total width of undercarriage	1885mm
• Width of upper structure	1790mm
• Width of track shoe	400mm
• Ground clearance	360mm
• Total length of travel mechanism	3750mm
• Cabin height	832mm



EXCAVATOR

Color options



QL-80

Configuration parameter

Performance parameters

• Operating weight (T)	8.2
• Bucket capacity (m3)	0.32
• Engine model	YANMAR
• Rated power (kw/r/min)	56.5
• Volume of fuel tank (L)	130
• Travel speed (km/h)	5.1/2.7
• Swing speed(r/min)	10
• Max climbing degree°	70
• Bucket digging force at power max (KN) ISO	52
• Average grounding pressure(KPA)	30
• Hydraulic pump model	InLine
• Setting pressure (MPa)	32
• Volume of hydraulic tank (L)	90
• Overall length (mm)	6100
• Overall width (mm)	2300
• Overall height (to top of boom) (mm)	2515
• Min. ground clearance (mm)	380
• Tail swing radius (mm)	1755
• Track length (mm)	2760
• Track gauge(mm)	1700
• Track width (mm)	2150
• Max. digging height (mm)	7165
• Max. dumping height (mm)	5065
• Max. digging depth (mm)	4038
• Max. vertical wall digging depth (mm)	3505
• Max. digging reach (mm)	6330
• Min. swing radius (mm)	1795
• Distance from swing center to rear (mm)	1755
• Arm length (mm)	1650
• Boom length (mm)	3710