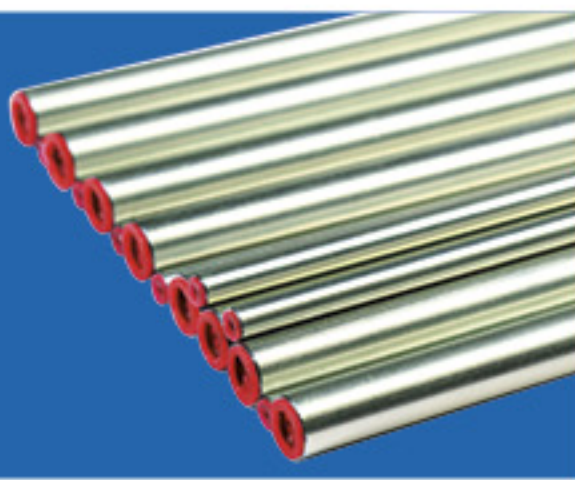


GLOBAL
QUALITY INTEGRITY WIN-WIN COOPERATION
PRECISION STEEL TUBE



Global Precision Steel Tube



About Us



Xuzhou Global Precision Steel Tube Co.,Ltd develops and produces the high quality seamless steel tubes. As the largest precision seamless hydraulic steel tube manufacturer in China, confirming to DIN2391/C, EN10305 and SAE J524 standard. We develops customized tubes solutions for Automotive, engineering machinery, railway locomotive, ships and hydraulic systems, etc.

We focus on R & D and keep improving the quality of our tube, selects the high quality steel billet, and when the production of manufacturing, every process is strictly controlled and tested to insure quality. Our products benefit from very good bending and forming properties, and stand out through good adhesion and high ductility.

Our company is located in Xuzhou City, Jiangsu Province, which is only 2.5 hours from Shanghai, with many professional production lines and testing equipments. We have more than 300 employees. Our products are covering many industry fields and accepted by customers abroad 60 countries.

We have set up a quality management system assuring the quality of all the produces and service provided. (IATF16949, ISO9001, SGS gained)

Welcome to visit our factory !!

180,000

Square meters Factory area

40,000

 tons

Annual output of precision steel tubes

5,000+

Global Customers

EN10305/DIN2391

Production Quality Standards



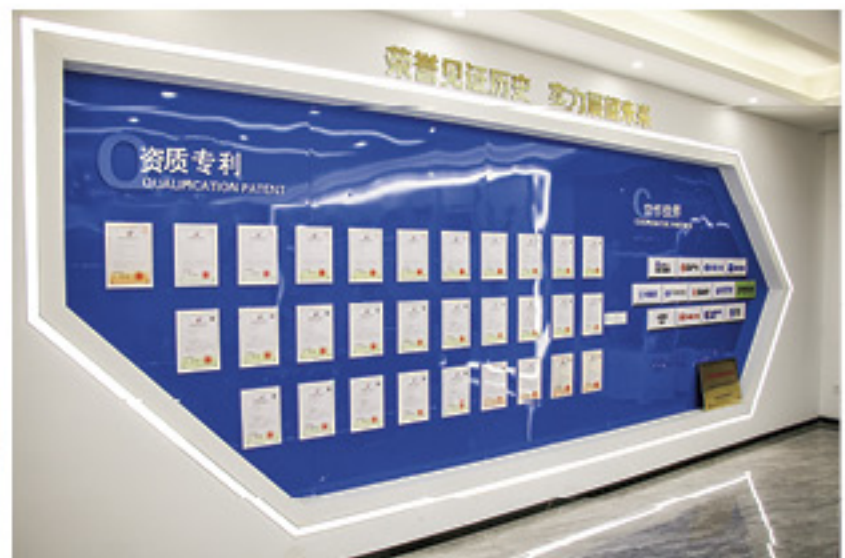
Our Team

Rich cultural life, relaxed and harmonious working environment , these are more effective to arouse the staff's working enthusiasm.

We will keep on contributing our efforts to the development of our company.



Excellent corporation culture create a successful business team,



enhance our cohesion, execution and creativity.

Excellent Quality

committed to professional precision manufacturing

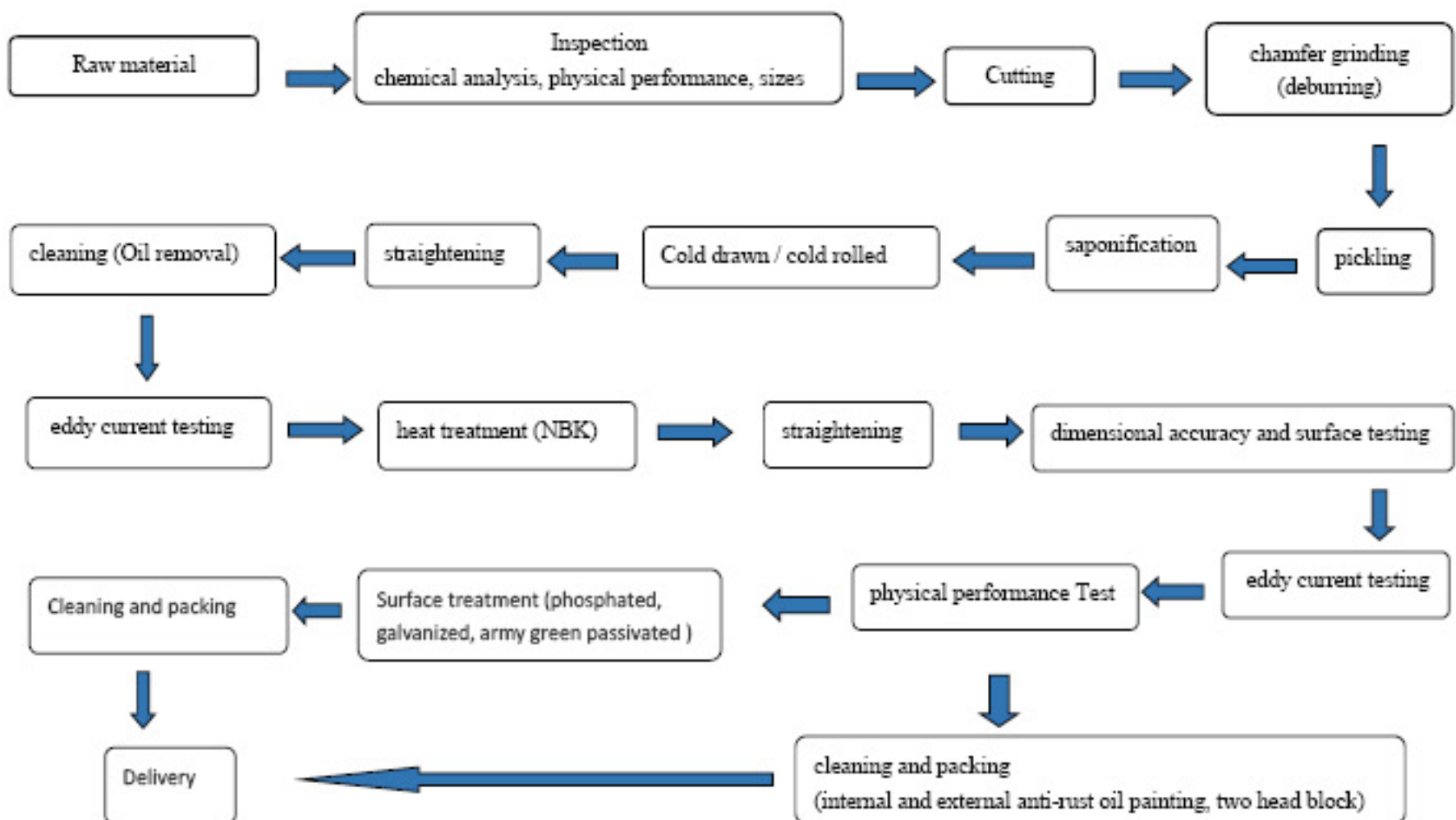


We choose the high quality steel billets, which have good chemical composition and mechanical properties. Including elongation, tensile strength, high pressure resistance should meet the requirements.

To ensure the high quality, all finished tubes are confirmed to DIN2391/C and EN10305 cold drawn/ cold rolled precision seamless steel tubes for hydraulic and pneumatic lines.



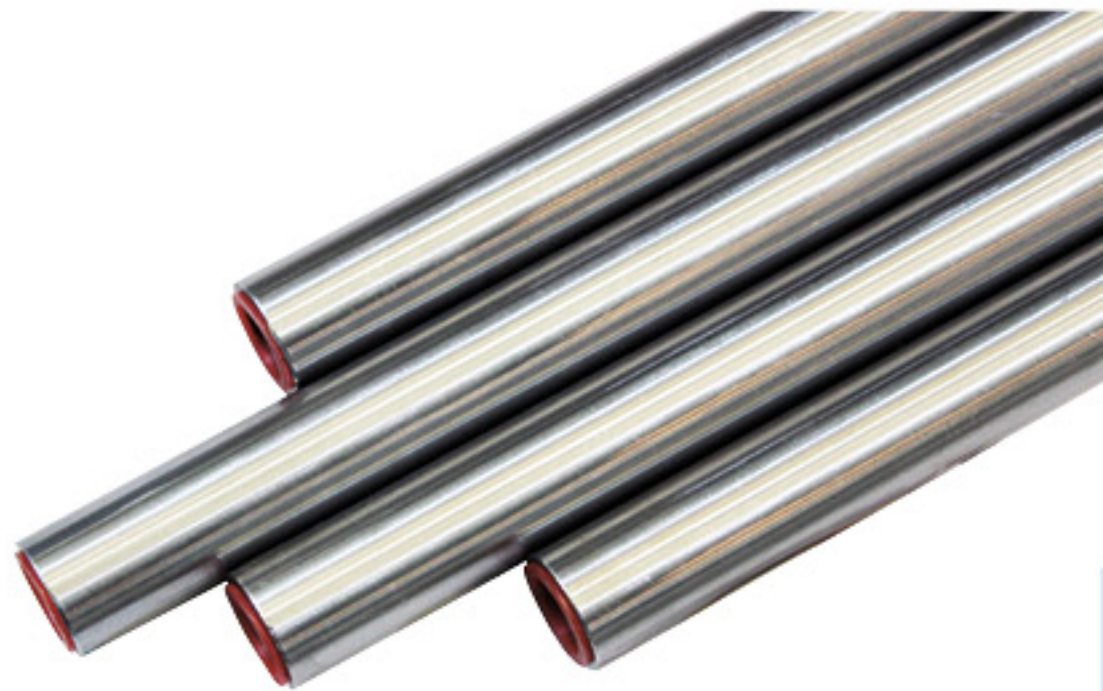
Work Flow Chart



DIN/EN bright cold drawn precision seamless steel tube

Technical characteristics

Standard:	DIN2391/C (EN10305-1),EN10305-4 (DIN2445), SAE J524
Grade:	E235 (ST35、 ST37.4),E255 (ST45), E355 (ST52)
Heat treatment :	NBK (+N) normalized
Surface treatment:	Bright as cold drawn
Straightness:	10 μ m / meter
Dimensional tolerance:	according to EN10305-4



Feature

- No oxide layer on both sides of tube;
- High pressure, no leakage;
- High precision, smooth surface;
- Cold bending without deformation;
- No crack during flaring and flattening;
- Anti-rust on inside and outside



Delivery conditions

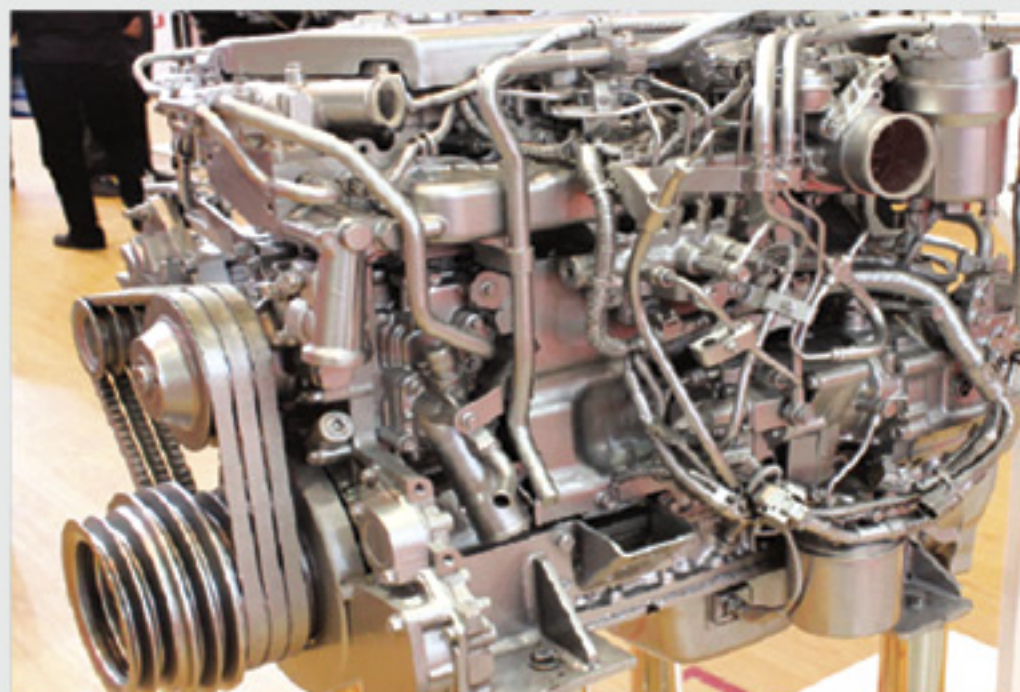
Goods: NBK (+N)

Packaging: Two ends sealed with plastic caps, bundling with plastic film and woven bag package.
Each bundle max 1000kgs

Length: Fixed 6m or as customer's requirement

Application

These tubes are widely used for hydraulic cylinder, diesel, hydraulic pump station and hydraulic system which areas require the steel tubes in high precision and cleanliness.



DIN/EN black phosphated precision seamless steel tubes



Technical characteristics

Standard:	DIN2391/C (EN10305-1), EN10305-4 (DIN2445), SAE J524
Grade:	E235 (ST35、 ST37.4), E255 (ST45), E355 (ST52)
Heat treatment:	NBK (+N) normalized
Surface treatment:	Phosphated–internal and external phosphated coating
Straightness:	10 μ m / meter
Dimensional tolerance:	according to EN10305-4

Features

- Black phosphated on both sides of tube.
- The phosphated coating is delicate, high lubricity, uniform color.
- Good looking in appearance
- High anti corrosion & anti rust.
- Suitable for painting, and have strong adhesion

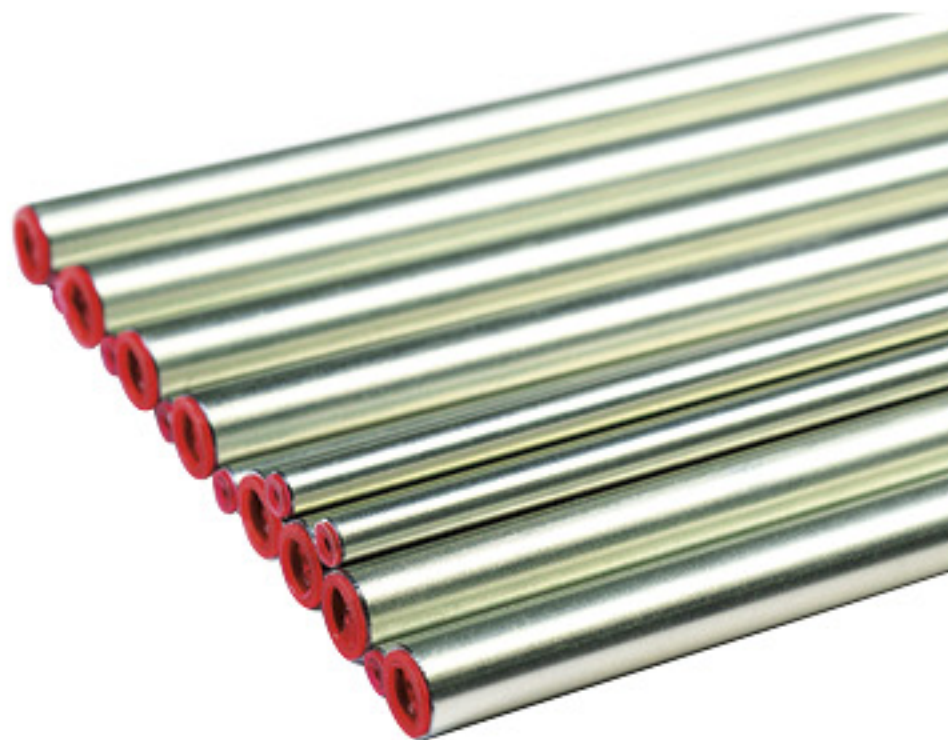
They are applied in engineering machinery ,ships ,precision machinery ,hydraulic and pneumatic system .The surface of phosphating precision steel tube is especially suitable for painting or spray treatment. The paint surface has strong adhesion, the effect is excellent and beautiful, and the rust prevention effect is greatly enhanced.



Application



HPL TUBE galvanized cold drawn precision seamless steel tube



Technical characteristics

Standard:	DIN2391/C (EN10305-1), EN10305-4 (DIN2445), SAE J524
Grade:	E235 (ST35, ST37.4), E255 (ST45), E355 (ST52)
Heat treatment:	NBK (+N) normalized
Surface treatment:	galvanized--these tubes with a zinc coating of 8 to 12 μ m and subsequently chrome VI-free passivated (white and color galvanized);

Feature

- Cold galvanized (electrogalvanizing) in bright steel tube;
- Improve corrosion resistance in surface;
- It will be strong anti corrosion & rust when passivated in zinc coating;
- Color: white, yellow or colorful;
- No zinc coating drops when bending;

Application

They are applied in all kinds of vehicles, engineering machinery chassis, hydraulic piping system which require the tubes in good looking and high corrosion resistance.



DIN/ EN army green passivated precision seamless steel tube



Technical characteristics

Standard:	DIN2391/C (EN10305-1), EN10305-4 (DIN2445), SAE J524
Grade:	E235 (ST35、 ST37.4), E255 (ST45), E355 (ST52)
Heat treatment:	NBK (+N) normalized
Surface treatment:	army green passivated
Straightness:	10 μ m / meter
Dimensional tolerance:	according to EN10305-1

Feature:

- High precision, smooth surface;
- Strong anti rust/corrosion property;
- No any corrosion after 220 hours' Salt spray test;

Application

They are widely used in heavy duty truck, military industry, railway locomotive, engine filed and the gas road in special vehicle.

They can meet the requirements because of high precision in inside and outside and corrosion resistance.



Tube Assembly—Cutting Sleeve Type

Tube assembly is made up of steel tube, cutting sleeve and nut. It is a commonly device in hydraulic system to connect various hydraulic components and transfer hydraulic oil and gas.



Specification

- Cutting sleeves and nuts are imported from Germany- JS brand
- Maximum bending capacity: $\Phi 60 \times 5$
- High cleanliness in inside
- Surface treatment: galvanized, phosphated
- High pressure resistance, no leakage at connection points, easy to assemble and high efficiency



Tube Assembly—welding type

Specification

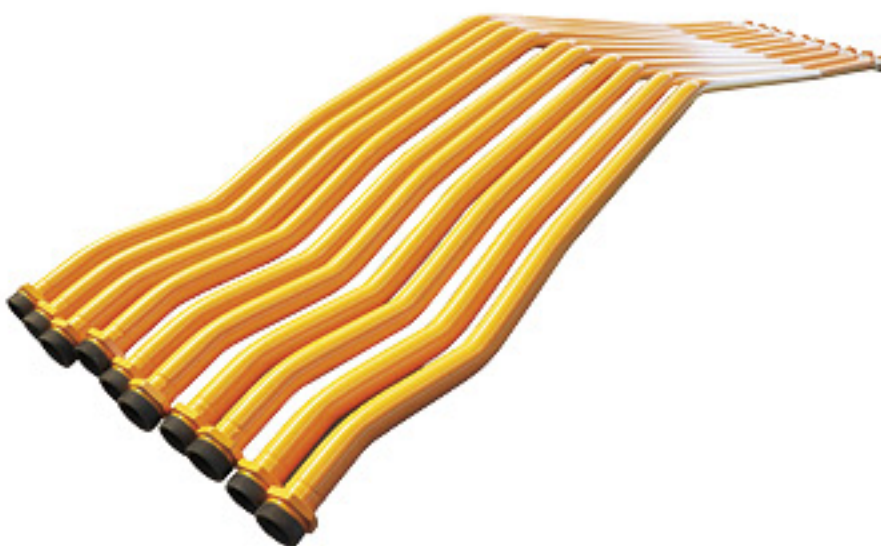
- TIG welding --mainly used for piping with high working pressure. The advantages are reflected in single side welding and both sides forming , high pressure resistance and high reliability.
- CO2 shielded arc welding--mainly used for piping with lower pressure. The advantages are easy operation, high efficiency and lower cost.

Features

Welding line is uniform, high pressure resistance, durable and no leakage

Surface treatment

galvanized, phopshated, spray paint and spray plastic

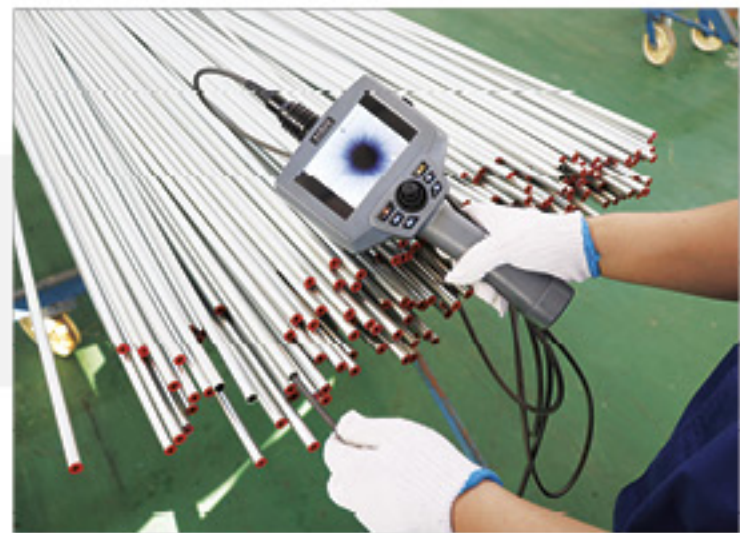


Test Equipments



Salt spray tester: test the corrosion resistance of coating (galvanized)

Endoscope: inspect the cleanliness of inner wall



Hydraulic universal testing machine: test the mechanical properties: tensile strength, yield strength, elongation

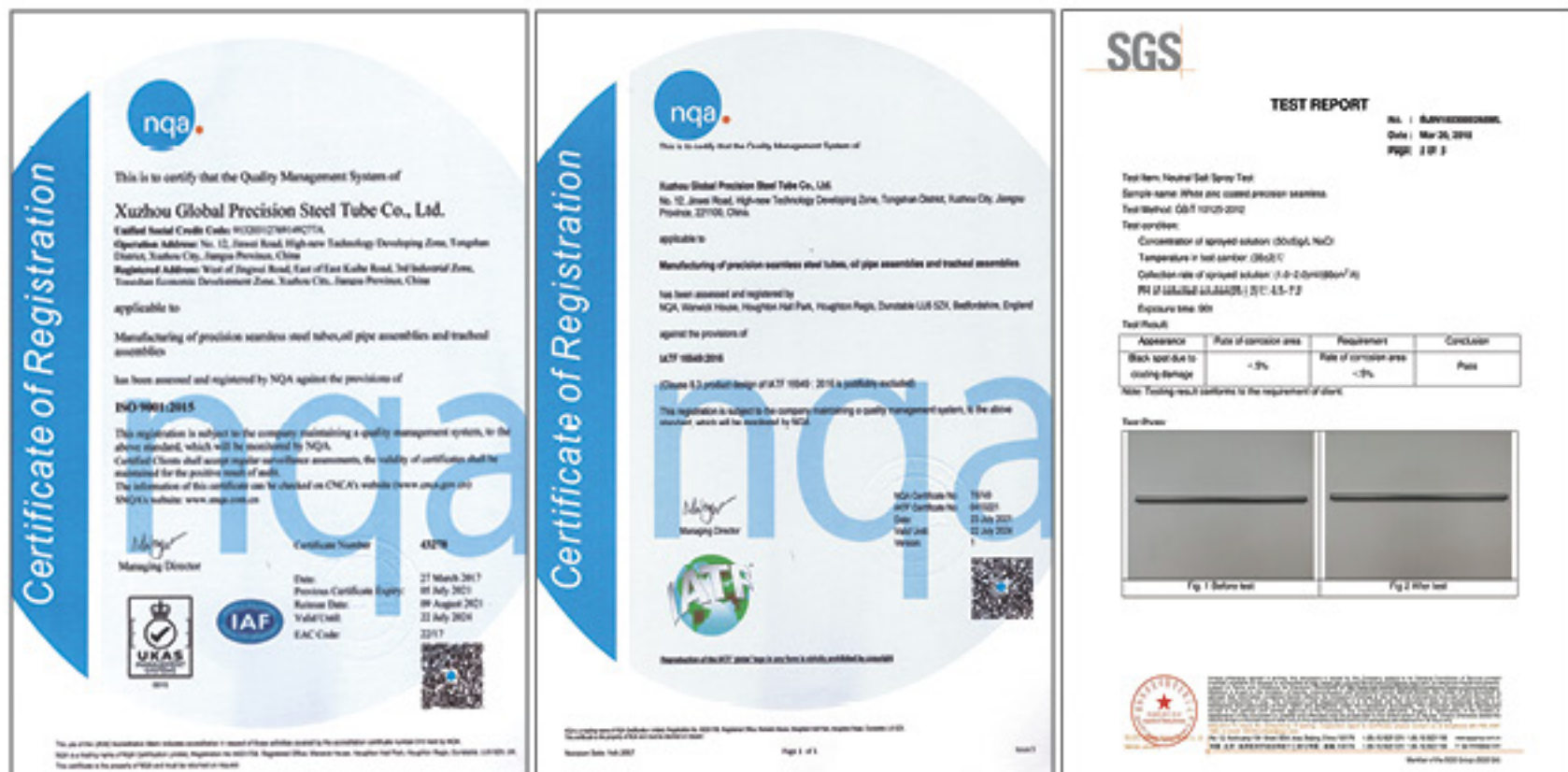
Eddy current inspection: inspect the surface of steel tubes for defects



Metallographic analyzer: used to identify and analyze the structure of various metals and alloy materials

Quality Assurance

1. ISO 9001: 2015 for the Quality Management System
2. IATF16949:2016 required by the automotive customers for the quality management system is currently under development
3. SGS--The Third Party testing for mechanical properties according to customer request
4. SGS--The Third Party testing for salt spray test according to customer request



In addition we guarantee:

- Strict compliance with EN10305 standard including raw material, production, quality control, and after sale service;
- Same level of environment standard required in EU.

Specification



Standard:

EN10305-4(DIN2445/2) , EN10305-1(DIN2391/C) ,GB/T3639, ASTM A179

Steel Grade:

E235 (ST35 ST37.4 10#) ,E255(ST45 20#) E355 (ST52 ST52.4 16Mn)

Size:

OD: 4-120mm, WT: 0.5-10mm, Length:Fixed 6m or as your requirement

Surface treatment:

1. Bright-polishing and do corrosion protection after NBK
2. galvanized--these tubes with a zinc coating of 8 to 12 μ m and subsequently chrome VI-free passivated (white and color galvanized);
3. Phosphated--internal and external phosphated coating

Heat treatment:

+N (NBK) normalized

Straightness:

10 μ m / meter

COLD DRAWN/ROLLED SEAMLESS PRECISION STEEL TUBES CONFIRMING TO DIN2391;EN10305-1;EN10305-4										
OD mm	Thickness (m m)									
6	6*1	6*1.5								
8	8*1	8*1.5	8*2							
10	10*1	10*1.5	10*2							
12	12*1	12*1.5	12*2	12*2.5						
14	14*1	14*1.5	14*2	14*2.5	14*3					
15	15*1	15*1.5	15*2	15*2.5	15*3					
16	16*1	16*1.5	16*2	16*2.5	16*3					
18		18*1.5	18*2	18*2.5	18*3	18*3.5	18*4			
20		20*1.5	20*2	20*2.5	20*3	20*3.5	20*4			
22		22*1.5	22*2	22*2.5	22*3	22*3.5	22*4			
25			25*2	25*2.5	25*3	25*3.5	25*4			
28			28*2	28*2.5	28*3	28*3.5	28*4			
30			30*2	30*2.5	30*3	30*3.5	30*4	30*4.5	30*5	
32			32*2	32*2.5	32*3	32*3.5	32*4	32*4.5	32*5	
34			34*2	34*2.5	34*3	34*3.5	34*4	34*4.5	34*5	34*6
35			35*2	35*2.5	35*3	35*3.5	35*4	35*4.5	35*5	35*6
38			38*2	38*2.5	38*3	38*3.5	38*4	38*4.5	38*5	38*6
40				40*2.5	40*3	40*3.5	40*4	40*4.5	40*5	40*6
42				42*2.5	42*3	42*3.5	42*4	42*4.5	42*5	42*6
45				45*2.5	45*3	45*3.5	45*4	45*4.5	45*5	45*6
46				46*2.5	46*3	46*3.5	46*4	46*4.5	46*5	46*6
48				48*2.5	48*3	48*3.5	48*4	48*4.5	48*5	48*6
50				50*2.5	50*3	50*3.5	50*4	50*4.5	50*5	50*6
54					54*3	54*3.5	54*4	54*4.5	54*5	54*6
60					60*3	60*3.5	60*4	60*4.5	60*5	60*6
										60*8

Note: 1. We can produce other specification as your requirements.
2. Surface treatment: Bright, galvanized (yellow, white, colorful), phosphated , army green passivation.



Tolerance							
Outer Diameter		Allowable tolerance		special tolerance			
		GB/T3639	EN10305-4	OD	WT		
4mm-20mm		±0.08mm	±0.08mm	±0.05mm	±0.05mm		
20mm-30mm		±0.08mm	±0.08mm	±0.08mm	±0.08mm		
31mm-40mm		±0.15mm	±0.15mm	±0.10mm	±0.08mm		
41mm-50mm		±0.20mm	±0.20mm	±0.15mm	±0.15mm		
55mm-60mm		±0.25mm	±0.25mm	±0.20mm	±0.20mm		

Chemical composition							
Steel grade		C	Si	Mn	P	S	Al _{tot}
Name	Number	max.	max.	max.	max.	max.	min.
E215	1.0212	0.10	0.05	0.7	0.025	0.015	0.025
E235	1.0308	0.17	0.35	1.2	0.025	0.015	–
E355	1.0580	0.22	0.55	1.6	0.025	0.015	–

Mechanical Properties				
Steel grade		Yield strength ^a	Tensile strength	Elongation
Name	Number	R _{eH}	R _m	A
		min.	min.	min.
		MPa	MPa	%
E215	1.0212	215	290 to 430	30
E235	1.0308	235	340 to 480	25
E355	1.0580	355	490 to 630	22

Application

Engineering Machinery



Railway Locomotive



Aircraft Vessel



Engery Field



Industry Dveices



Our Clients



Exporting our tubes to all over the world

Is our faith and goal which we insist on !!

Global Precision Steel Tube **Marketing & Service**

—Dedicated to building a high degree of strategic partnership with customers

Quality- Integrity-- Win-Win Cooperation
Seek for excellent quality, cast on perfect products

We sincerely hope that the new and regular customers to build good relations of cooperation to create prosperity !!



Xuzhou Global Precision Steel Tube Co.,Ltd

ADD: South Side of Liancheng Road High-tech Development
Zone Tongshan District,Xuzhou City,Jiangsu
Province,221100,China

Tel: +86 516 8330 7968

+86 516 8330 7909

Mob/whatsapp: +8618361281832

E-mail: qqt1@globaltube.cn

Web: www.global-steeltube.com

