

打桩机

适用领域

适用较硬的硬土层、冻土层及软石、风化石等地质的松散作业。

核心特点

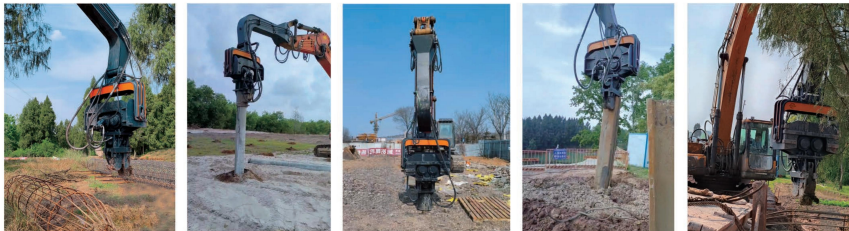
- ① 液压回转马达及齿轮内藏，可有效避免油污及碰撞，齿轮更换方便，配合紧密，平稳耐用；
- ② 箱体采用开放式结构，确保箱内压力平衡，稳定排热；
- ③ 采用高性能进口缓震橡胶块，质量稳定使用寿命长；
- ④ 采用原装进口马达，效能稳定，品质超群；
- ⑤ 夹嘴油缸推力强且保压，稳定可靠，确保桩体不松落，保证施工安全；
- ⑥ 夹嘴材质采用进口耐磨板，耐磨性高，使用周期长。

Applicable Fields

Suitable for loose operations in hard soil layers, permafrost layers, soft rocks, weathered rocks, and other geological conditions.

Product Features

- ① The hydraulic rotary motor and gears are hidden inside, which can effectively avoid oil stains and collisions. The gears are easy to replace, closely matched, and stable and durable;
- ② The box adopts an open structure to ensure pressure balance and stable heat removal inside the box;
- ③ Adopting high-performance imported cushioning rubber blocks, with stable quality and long service life;
- ④ Adopting original imported motors, with stable performance and superior quality;
- ⑤ The clamping nozzle oil cylinder has strong thrust and maintains pressure, ensuring stability and reliability, ensuring that the pile body does not loosen and construction safety is ensured;
- ⑥ The material of the nozzle is made of imported wear-resistant plate, which has high wear resistance and long service life.



项目/型号	Item/model	Unit	TD250	TD350	TD450
偏心力矩	Eccentric Moment	Nm	45	70	85
振频	Frequency	Rpm	2800	2800	2800
离心力	Centrifugal Force	Kn	360	650	790
振幅	Amplitude	Mm	6.8	14	16
工作压力	Working Pressure	Bar	280	300	300
使用油量	Oil Flow	L/min	220	300	300
最大旋转角度	Max Turning	Degree	270	270	270
主机重量	Main Body	Kg	2080	3000	3200
附臂重量	Extension Boom	Kg	740	740	740
总重量	Total weight	Kg	2820	3740	3940
适用挖掘机	Applicable Excavator	Ton	20-30	30-40	40-60

Excavator Mounted Hydraulic Pile Driver

开放式箱体 Wear Resistant Body

箱体采用开放式结构，保证箱内压力平衡、散热稳定，采用高性能进口阻尼橡胶块，质量稳定，使用寿命长。
The box adopts an open structure to ensure pressure balance and stable heat discharge in the box; it adopts high performance imported damping rubber block, which has stable quality and long service life.

齿轮箱 Gear Box

高精度变速箱保证新的散热专利长期稳定运行。
High precision gearbox ensures new heat dissipation patent long-term and stable operation.

更换便捷 Convenient Replacement

齿轮更换方便，配合紧密，稳定耐用。
The gears are convenient for replacement, closely matched, stable and durable.

马达 Motor

使用进口美国伊顿液压马达，扭矩大、坚固耐用，生产率高。
Using imported Eaton hydraulic motors from the United States, with high torque, durability, and high productivity.

旋转装置 Rotation

正负180转盘，操作灵活，效率高，性能稳定。
Positive and negative 180 Rotation disc

90旋转臂 90 Rotation Arm

主夹具 Main Clamp

一体式活塞夹嘴油缸动力强劲、保压、稳定可靠。
Integrated piston clamping nozzle oil cylinder powerful, pressure maintaining, stable and reliable.

下颚 Jaws

耐磨合金钢设计，耐磨耐腐蚀，强度高。
Wear-resistant alloy steel design, easy to disassemble and replace, wear-resistant and corrosion-resistant, with high strength.

