



MINGSHANG



IATF 16949:2016

VEHICLE VISUAL SAFETY SOLUTIONS

To be the World's No.1 Vehicle Vision Manufacturer

MINGSHANG TECHNOLOGY CO., LTD

Headquarters: No. 569, Sanhe Section, Yeting Avenue, Huiyang Economic Development Zone,
Huizhou, Guangdong(China)

Singapore office: 17 FERNVALE CLOSE #19-29 RIVERBANK @FERNVALE SINGAPORE(797478)
Hong Kong office: Rm 605.6/F, Fa Yuen Commercial Building, 75-77 Fa Yuen St, Mongkok,
Kln, Hong Kong

Shenzhen (China)
Changsha (China)
Xiamen (China)

Tel: +86-0752-3500878/868 0755-28078528

Website: www.mingshang.com E-mail: mingshang@mingshang.com



Website



Linkedin



Wechat Official Account

MINGSHANG TECHNOLOGY CO., LTD

SERVICE

Focusing on the commercial vehicle industry, with smart cabin as the core, the company is an integrator of hardware and software system including driving safety, vehicle management, intelligent driving, and intelligent network. Our products are based on video security collection, storage, monitoring, connecting cloud and data computing products, commercial vehicles with special thermal imaging dual light fusion night vision system, intelligent cockpit display, multi-way 360 panoramic system for blind zone, etc. Based on the combination of hardware product sets, we provide personaized technical bases for commercial vehicle intelligence, informationization, digitalization and and networking, and to build a commercial vehicle networking operation service platform integrated with high-quality software and hardware system.

CORE TECHNOLOGY

The company focuses on the core technology of intelligent driving software and hardware platform of commercial vehicle, integrates the advantageous products of the world's cutting-edge partners, with varieties and small-volume output and the company has potentially become leader in the whole market segment. Mingshang shareholders: Arcsoft, Horizon Robotics, Pateo, Zijin Mining, Shenzhen Smart City, etc.

HONORS & AWARDS OF ACHIEVEMENTS

- National High-tech Enterprise Certificate
- National High-tech Product Certificate
- National Safety Technology Center CCC Product Certificate
- Certificate of ISO 9001/IATF16949 Quality Management System
- Passed ISO 14001:2015 Environmental Management System Certificate
- Passed ISO 45001:2018 Profession Health and Safety Management System Certificate
- Passed CMMI Level 3 Software Capability Maturity Integration Model Certificate



R&D Achievements

- **2024,** Vehicle central domain control (triple screen).
- **2023,** Remote driving intelligent control system, fully integrated intelligent cockpit, AVM all-in-one system + 6-channel video intelligent ministry standard integrated machine.
- **2022,** Thermal image camera, auto shutter camera, forklift camera, NVR.
- **2021,** Developed AI multimedia, driver state monitor, active safety video terminal, 360 degree panoramic system, high limit detection & warning system.
- **2020,** Developed 12.1" Android Auto Apple CarPlay built-in Bluetooth, Digital media receiver / multimedia receiver.
- **2019,** Developed HD 4 CH 5", 7", 9" Digital Wireless Rear View System.
- **2018,** Developed DSM and Streaming Rearview Mirror DVR.
- **2017,** Developed 4CH quad 7" HD camera system with DVR function.
- **2016,** Developed 10.1" quad AHD rear view system & 4CH AHD SD card DVR.
- **2015,** Developed 8CH HDD DVR, camera cleaning system & 7" quad 1080P rear view system.
- **2014,** Developed 4CH HDD DVR, GPS tracker and WIFI wireless rear view system.
- **2013,** Developed 360° bird view system & a series of digital wireless system.
- **2012,** Developed the first 7" quad touch screen rear view system.
- **2011,** Passed TS16949:2009 &IS09001:2008.
- **2010,** Developed 7" & 9" rear view system and passed CE & FCC.
- **2009,** Developed the first 7" analog wireless rear view system.
- **2008,** Developed the first 5.6" and 7" digital rear view system.
- **2007,** Developed a series of car license plate cameras and passed CE.
- **2006,** Developed the first 3.5" and 4.3" rear view system.
- **2005,** Developed the first 7" GPS rear view system.
- **2004,** Developed the first 7" rear view system MS-702RSC.
- **2003,** Specialized in car rear view system.

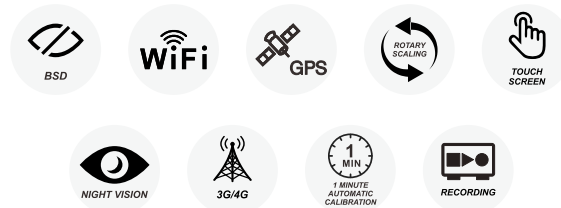
3D 360° Around View Monitoring System + BSD (optional)



MS-620



360° Surround View Monitor All-in-one System



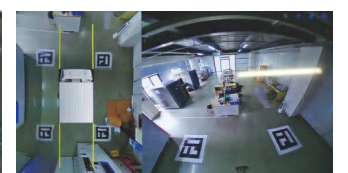
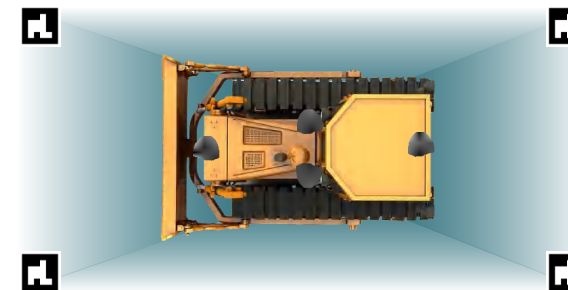
MS-620A



360° Waterproof Surround View Monitor All-in-one System



MS-721RK



Aerial view and left view

Aerial view and right view

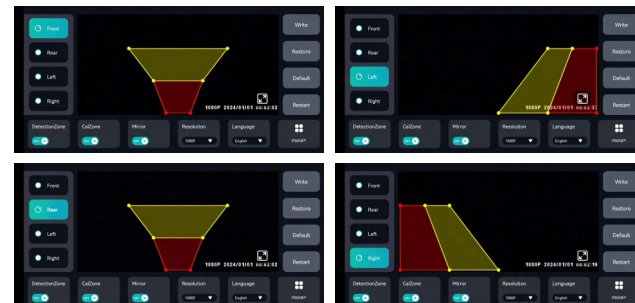
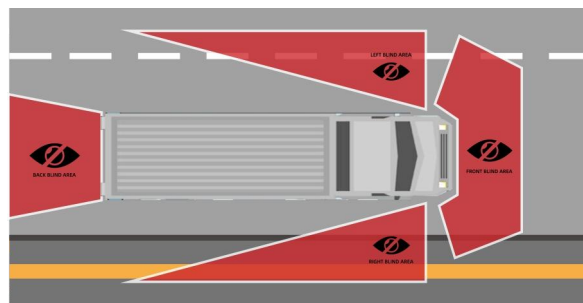
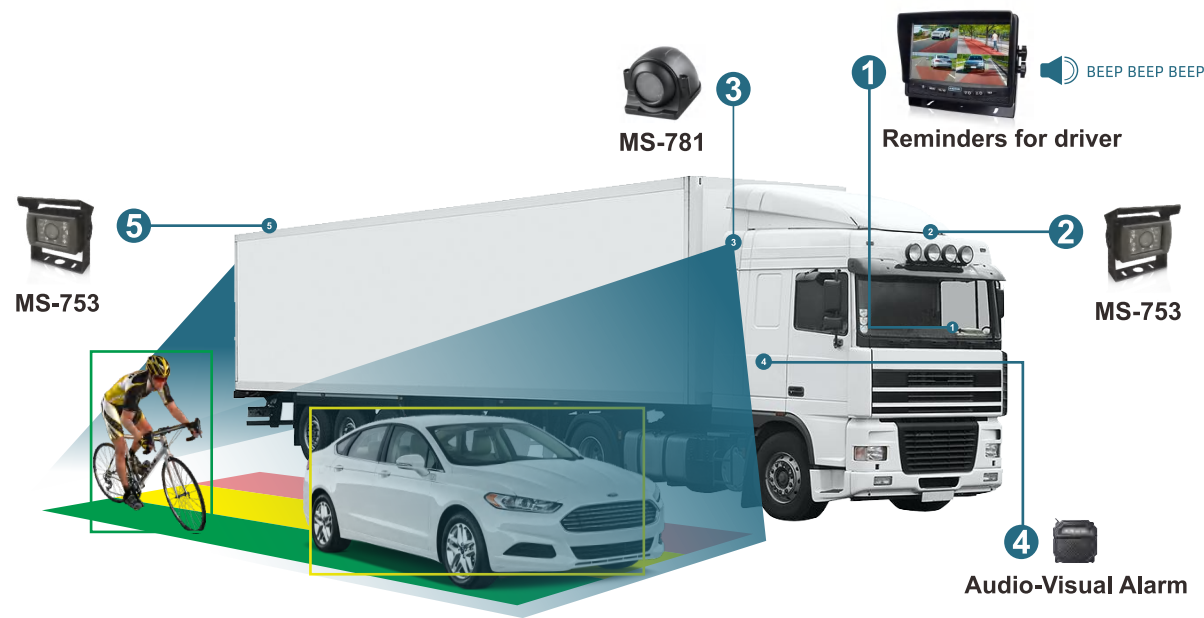
Aerial view and rear view

Aerial view and front view

7" AI BSD System

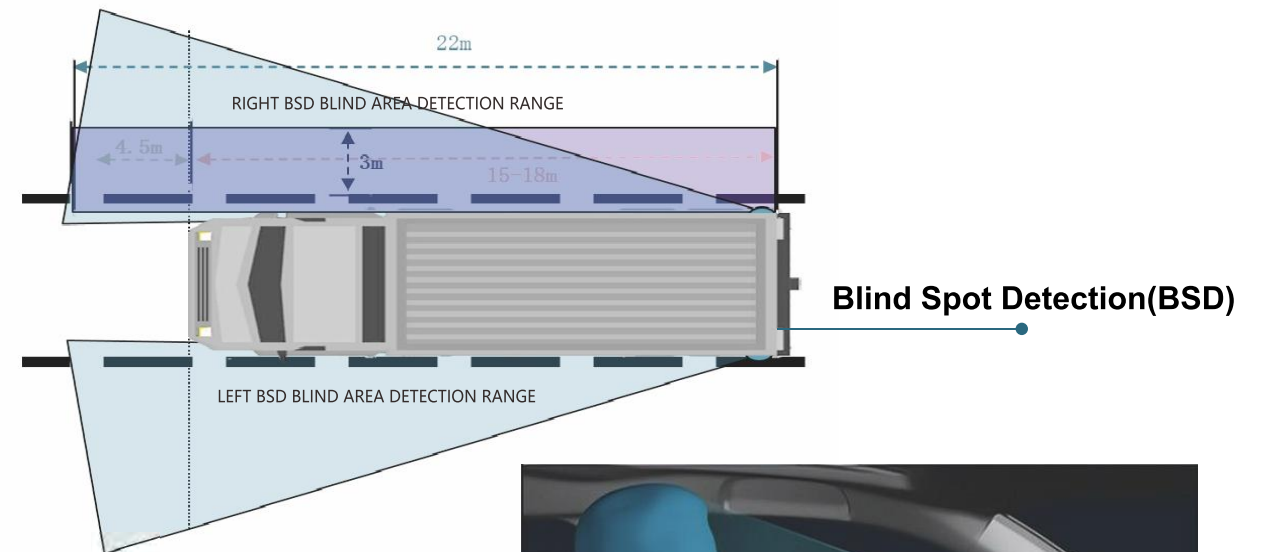
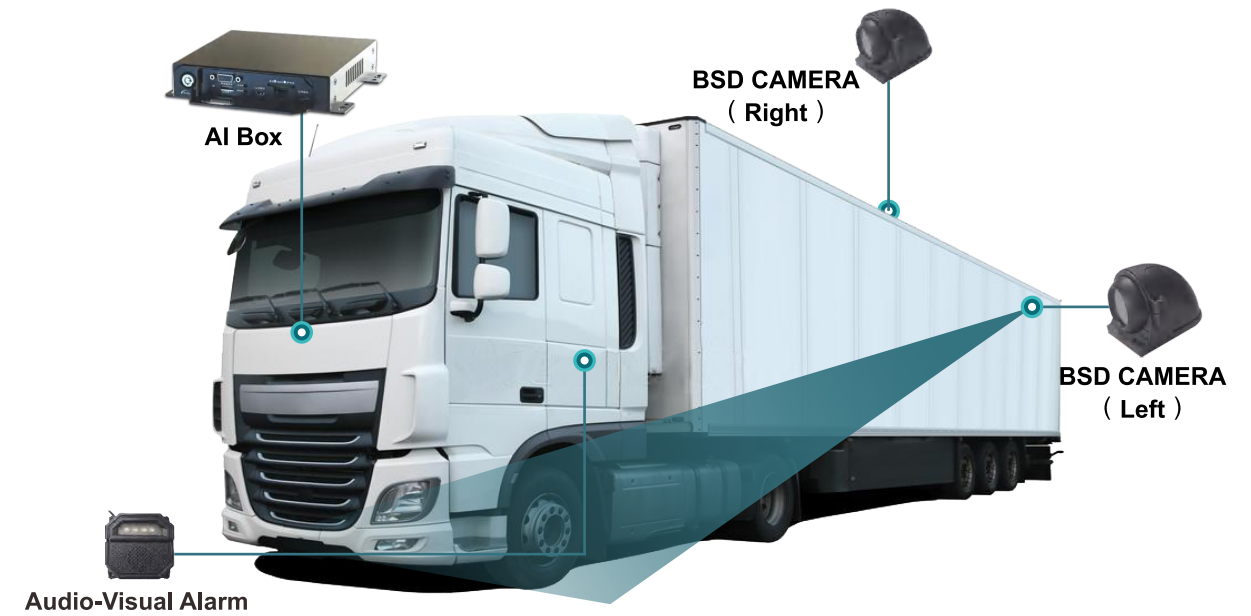


MS-708HD

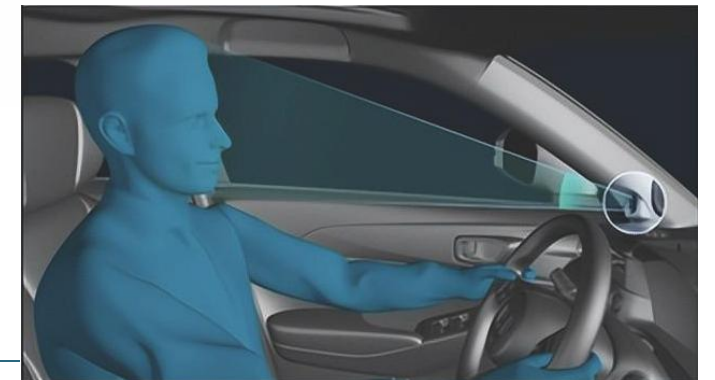


APP Calibration

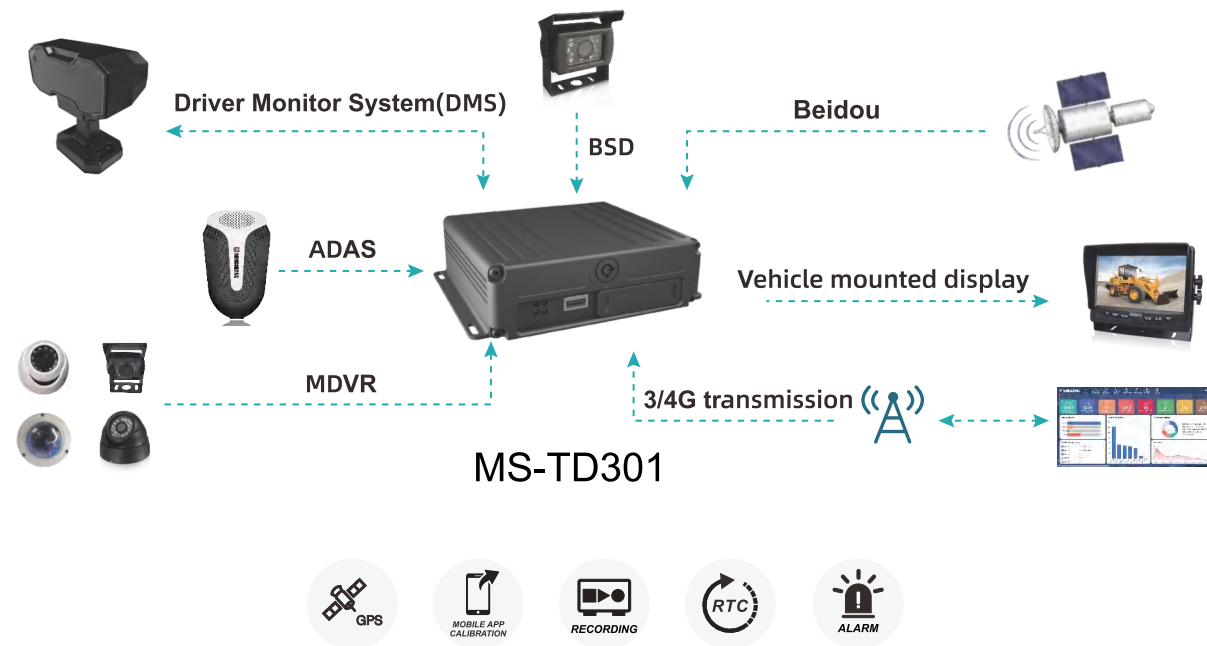
Active Safety Video Terminal



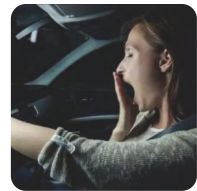
Driver Monitor System(DMS)



Active Safety Video Terminal



Basic Functions



Fatigue Warning



Smoking Warning



Calling Warning



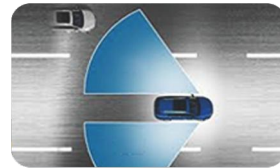
Distraction Warning



FCW+LDW-ADAS



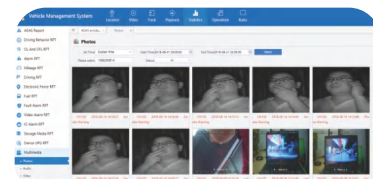
BSD



Real-time audio&video monitor



Real-time positioning monitor



Data report

Intelligent Remote Driving Control System



Integrated Intelligent Cockpit



15.6" ANDROID AUTO/APPLE CARPLAY



12.1" Android Auto/Apple Carplay



MS-D005AC



10.1" Android Auto/Apple Carplay



MS-D101AC



7" HD Touchscreen Car DVD Player



MS-808L



Intelligent Vehicle Mounted Thermal Imaging Night Vision System

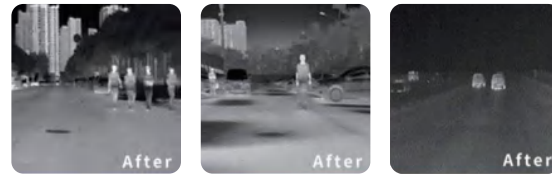
- DRIVING ASSISTANCE
- IMAGE WITHOUT LIGHT
- IDENTIFICATION AND TRACKING
- ANTI-GLARE
- ALARM
- CUSTOMIZED IMAGER



Normal vision range

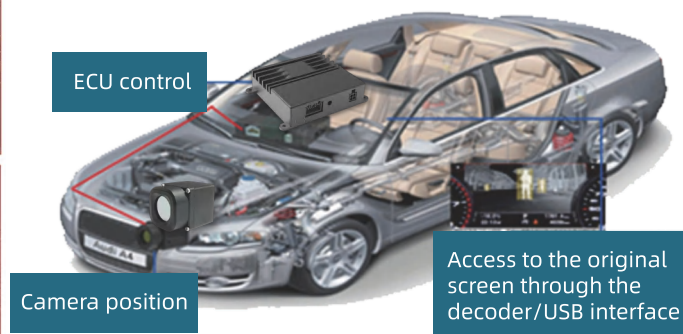
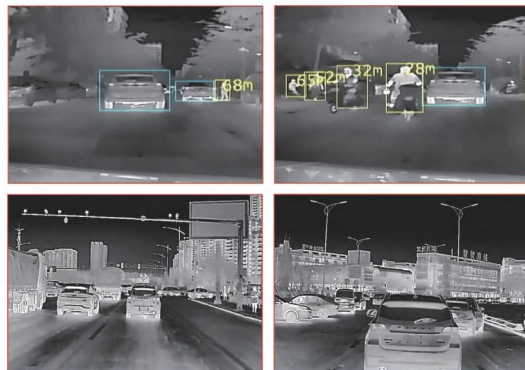


Thermal imaging view range



APPLICATION

Passenger vehicles, commercial vehicles, special vehicles, railway vehicle assistance and autonomous driving.



Driver Monitoring System



Basic Functions



Fatigue warning



Yawn warning



Smoking warning



Calling warning



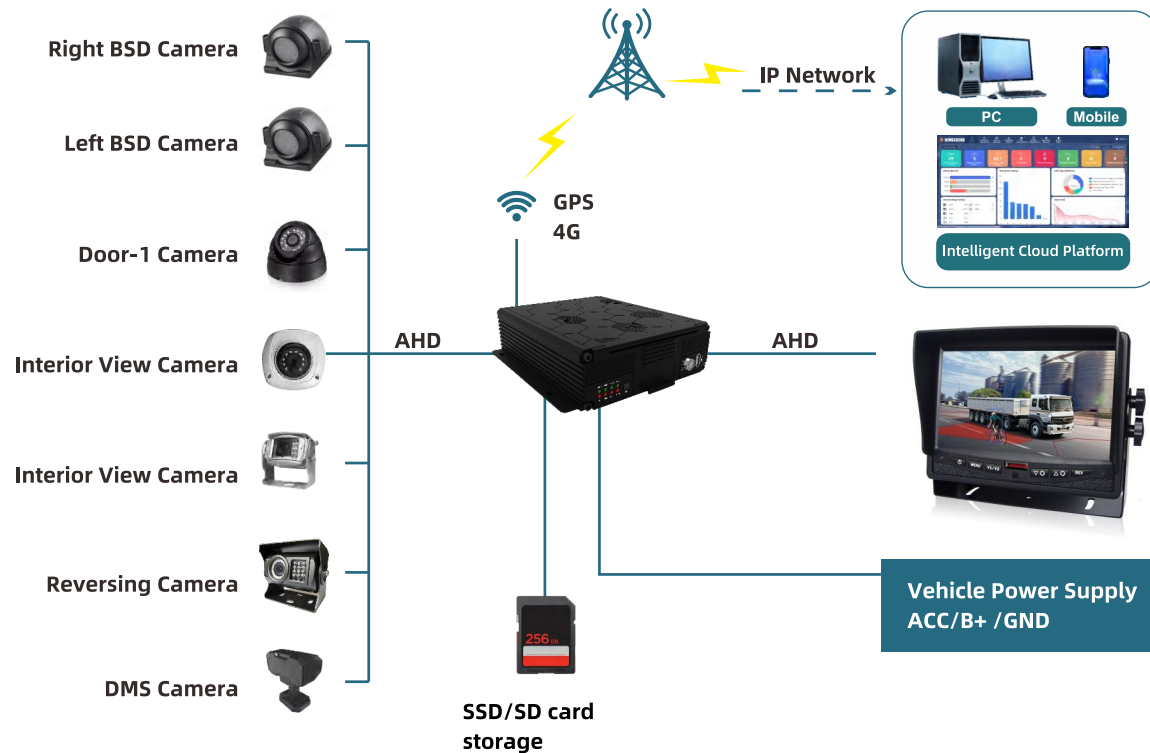
Distraction warning



Absence warning

8CH/16CH MDVR/NVR 8CH IPC +8CH AHD

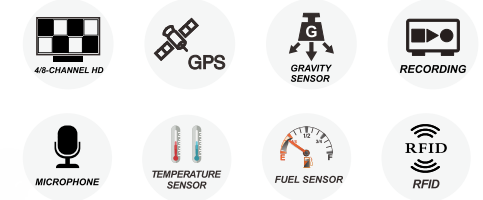
MS-V001RK



4/8CH AHD HDD DVR With BSD, DMS and ADAS



MS-586DVR



Support Customized Platform (Linux & Windows)



OTHER DVR SYSTEM



MS-581DVR
2CH AHD SD MOBILE DVR

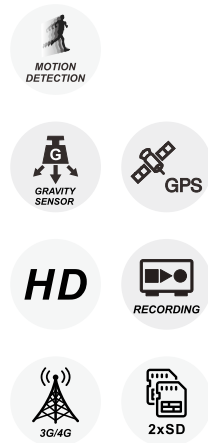


MS-5011DVR
SD Card Mobile DVR
(4CH/GPS+4G)



MS-583DVR
4/8 CH HDD Mobile DVR

9" 6CH HD DVR Monitor



MS-796DVR

7" 4CH 1080P Video Recording System



MS-715DVR

- 4CH 1080P DVR with HD monitor, touch screen
- GPS function, G-sensor
- Support SD card SSD optional
- Linux operating system
- External USB2.0 interface, software upgrade and file downloading capable
- Support 4 video mode: manual, alarm, timing, trigger

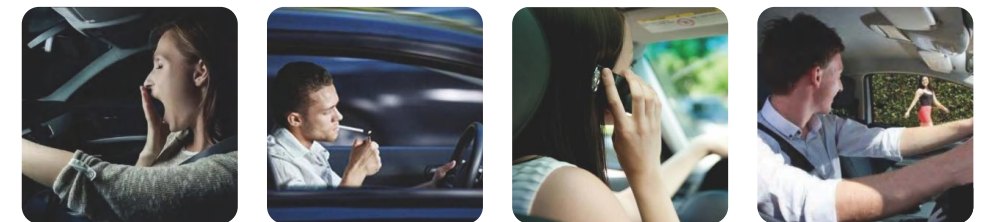
9" Intelligent Vehicle AI Recording Monitor with DMS, ADAS, BSD



MS-796AI



Basic Functions



Fatigue warning

Smoking warning

Calling warning

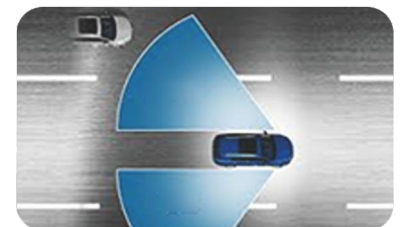
Distraction warning



FCW+LDW-ADAS



BSD



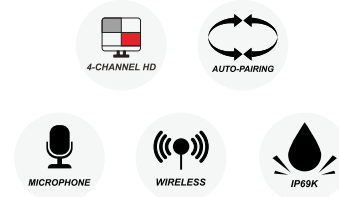
7" 4ch HD Wireless System with Recording



MS-715HDRSM



MS-706W



Digital HD Wireless System

1 Auto Scanning

2 Auto Pairing

- Auto Pairing starts when camera is powered

3 Quad View



- 7" HD digital wireless monitor
- 4x720p HD camera input

4 2.4HGz

- Frequency range 2400-2483.5 MHZ
- Distance: 300m (barrier-free)
- Reception capability: -89dBm

5 Recording Monitor

- Built-in recorder (256GB Micro SD card)
- Real time recording, video playback
- TGV video quality, MPEG4 format

AHD 2.4GHz Digital Wireless Forklift Camera



MS-787SN



Laser Positioning

- Magnetic wireless forklift safety camera, easy to install
- IP69K waterproof with metal shell, durable and fit for forklift to work outside
- Can be conveniently powered by external battery
- Green laser to help the operator calibrate more accurately

AHD 2.4GHZ Digital Wireless Forklift Camera



- 720P HD wireless forklift camera, easy to install
- IP69K waterproof with metal housing, durable and fit for forklift to work outside
- Conveniently powered by rechargeable external battery
- Green laser to help the operator calibrate more accurately

Zoom HD Wireless Camera System



Wireless Transmission Up To 300 Meters



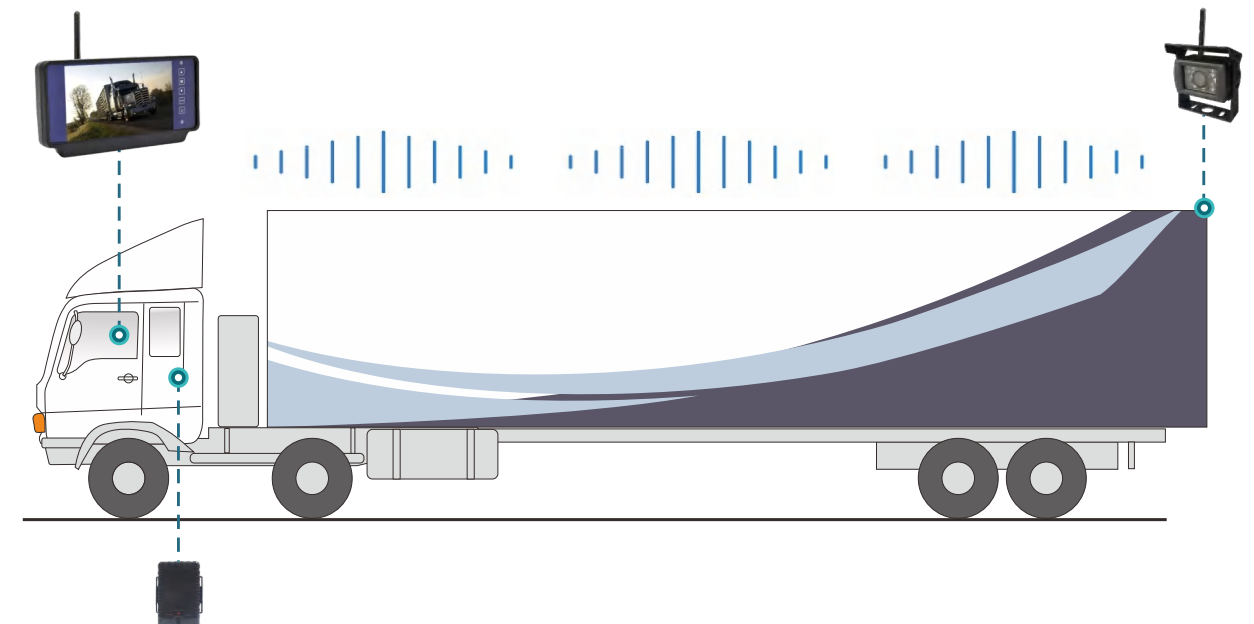
- 9-inch HD wireless DVR system with a 30x zoom camera
- Simple zoom mechanism with a wireless monitor, remote control, and infrared night vision
- Designed for cranes, hoists, and tower cranes to improve operational ease, efficiency, and safety
- Commonly used in port, mining, machinery, lifting and construction industries

7" 4CH HD Wireless Camera System



- Full HD No interference digital signal
- High-Res: 1,024X3 (RGB) x 600 pixel
- Monitor built-in rechargeable battery
- Frequency: 2400MHZ~2483.5MHZ
- Auto scanning, auto pairing
- Wireless Distance: 150 M in open area
- 4CH video, quad screen/dual-screen/full screen optional
- 4 wireless cameras TX 1080p 30HZ single antenna transmission
- Wireless HD display RX 1080p 30HZ dual antenna reception
- Completely waterproof IP69K rating
- Auto-Brightness
- The system can connect up to 4 cameras

7" 4CH HD Digital Wireless Rear View System



5" Digital Wireless Camera System



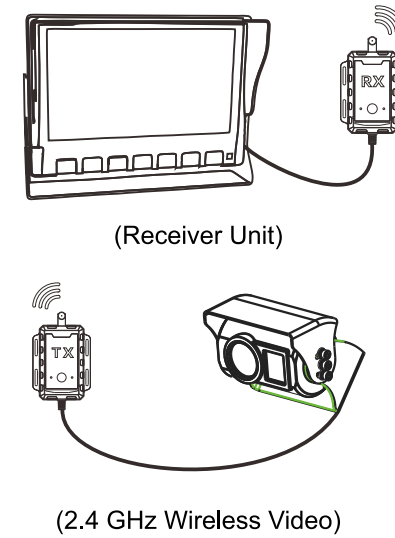
MS-508RSW

4.3" Digital Wireless Camera System



MS-348RSW

AHD Transmitter & Receiver



(Receiver Unit)

(2.4 GHz Wireless Video)



(2.4 Ghz Wireless Transmitter)

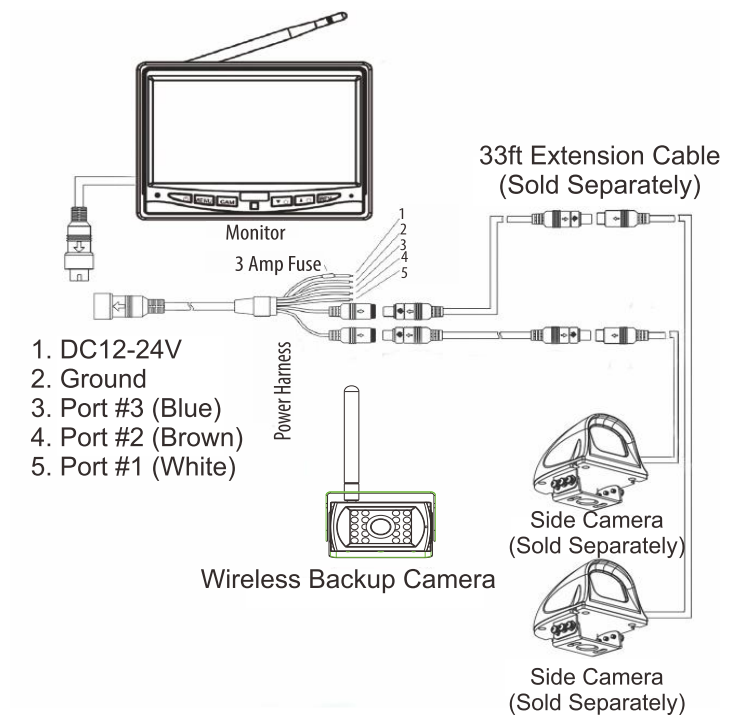
(2.4 Ghz Wireless Receiver)

MS-219

7" Wireless Camera System with Wired Side Camera Inputs



MS-708RSD



7" HD Rear View System

720P

LCD

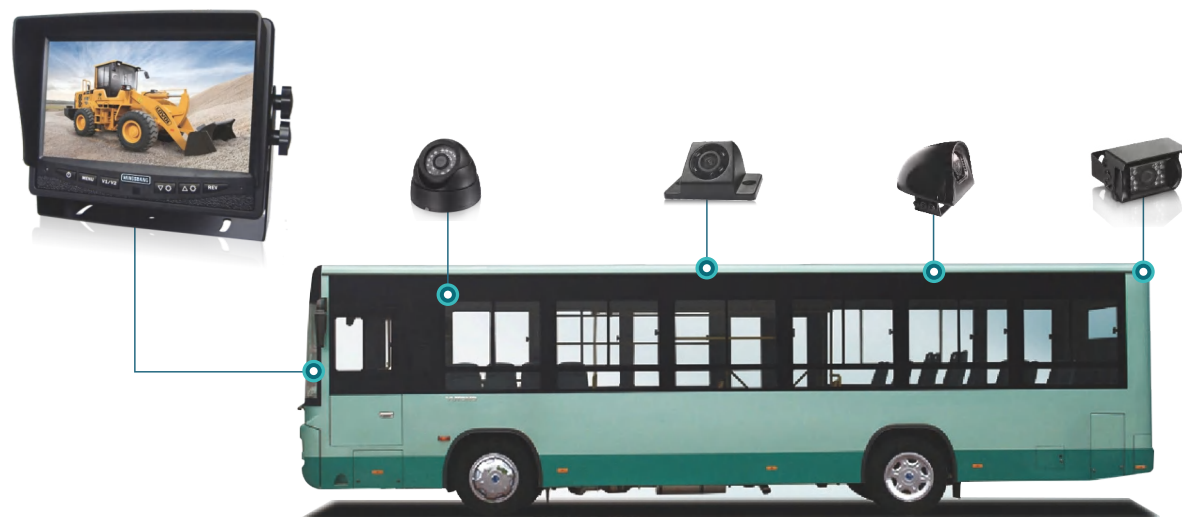
IP69K



MS-708RSCD

Monitor	MS-708HD
Pixel	1024(H)*3(RGB)*600(V)
Contrast	450:1
Power Input	DC10V-36V
Video Input	4CH
Audio Output	1CH

Camera	MS-750HD
Pixel	1920(H)*1080(V)
Waterproof	IP69K
Resolution	1080P
Viewing Angle	120 Degree
IR LED	18 pcs



7" Waterproof Rear View System



MS-716RSC

ANTI-VIBRATION

LCD

IP69K



MS-775



MS-752



MS-755



MS-780



MS-778

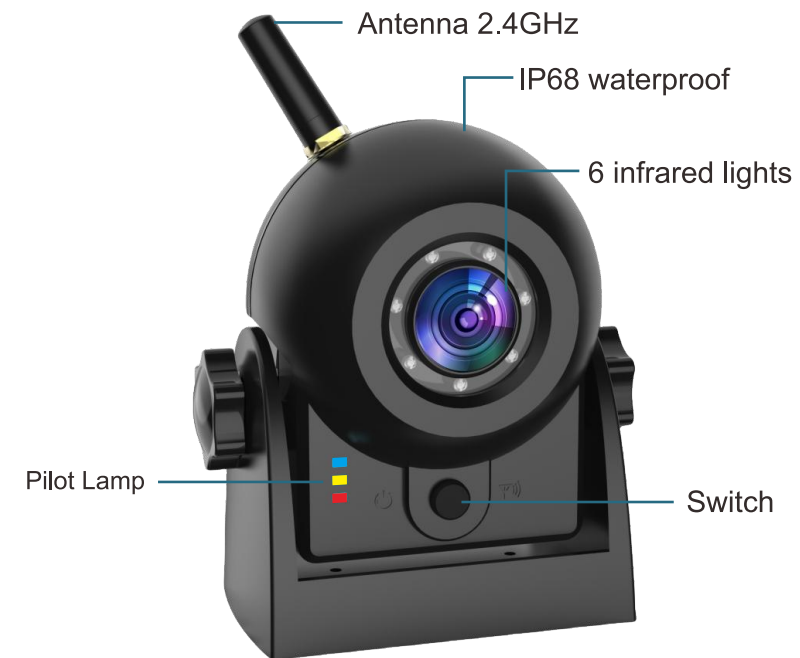
IP69K
Waterproof
MS-716 4CH



12.1" Dual Screen Electronic Rearview Mirror Monitor System



HD Wifi Backup Camera System



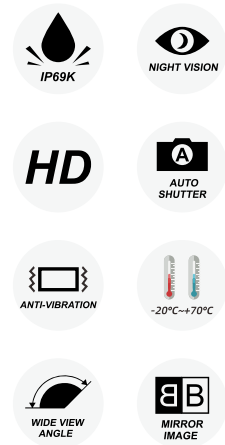
Download the 'MS Cam' app:
Android: Google Play Store
IOS: Apple Store



- This system compatible for Cars/Pickups/RVs/Trailers/ Motorhomes/5th wheels/Campers/Vans



Auto Shutter Camera



MS-C789GC

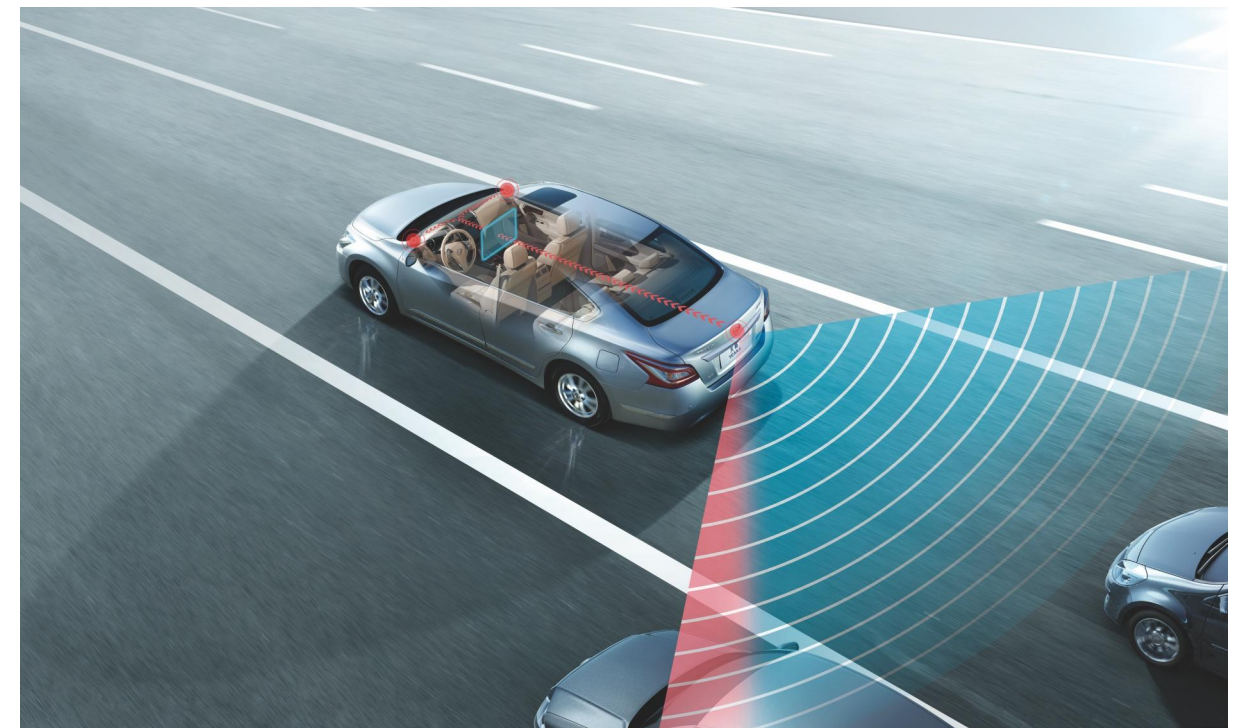
- IP69K waterproof
- With auto shutter for lens protection, suitable for harsh environments like sand or heavy snow, with a wide viewing angle
- Night vision distance: 8m~10m (26.25ft~32.81ft)



LVDS Camera



(Serializer: Max9295, MAX96705 and Ti953)



OEM Camera



MS-323
(General Flat)



MS-324
(Chevy-Savannah 2003-2013)



MS-327
(Ford Transit 2015-2016)

HD Camera



MS-S003FF



MS-311HD



MS-770HD



MS-775HD

AI Camera



MS-M09



ADAS



LVDS



DMS

Car Camera



MS-303



MS-773



MS-309C



MS-C375AHD

Camera	AHD(720P)	AHD(1080P)	CCD	CMOS
Number of effective pixels	1280(H)*720(V)	1920(H)*1080(V)	752(H)*582(V)	960(H)*480(V)
Video Signal System	TVI, AHD optional	TVI, AHD optional	CCD	CMOS
S/N Ratio	≥ 41dB	≥ 42 dB	≥ 48 dB	≥ 43 dB
Minimum Illumination	0.01Lux(With IR)	0.01Lux(With IR)	0.01Lux(With IR)	0.01Lux(With IR)
IR Switch Control	Mechanical Day & Night (IR fitter changeable)	Mechanical Day & Night (IR fitter changeable)	Mechanical Day & Night (IR fitter changeable)	Mechanical Day & Night (IR fitter changeable)
Power Input Range	9V-24V	9V-24V	DC 12V	9V-18V
Electronic Iris	AUTO/ 1150(1/60) -1/50, 000sec	AUTO/ 1150(1/60) -1/50, 000sec	AUTO/ 1150(1/60) -1/50, 000sec	AUTO/ 1150(1/60) -1/50, 000sec
Waterproof	IP69K	IP69K	IP68/69K	IP68/69K
Temperature Operation	-30°C~70°C	-30°C~70°C	-30°C~70°C	-30°C~70°C
Ambience Humidity	Rh95% max	Rh95% max	Rh95% max	Rh95% max

Mingshang Technology's Comprehensive Laboratory is a self-built, advanced facility with state-of-the-art equipment, enabling over 50 extreme environmental tests, including image testing, ESD, 7637, electrical performance, vibration, shock, waterproofing, and more.

Focused on customer needs, it follows "high standards, strict requirements," aiming for "zero defects." Using tools like APQP, PPAP, FMEA, MSA, and SPC, it ensures top-quality products through comprehensive quality management.



BYD 供应商实验室评定报告	
报告编号: BYD-155013-20220729	
供应商名称: 名商科技有限公司	
中试实验室名称: 名商科技有限公司综合实验室	
实验室具体地址: 广东省惠州市惠阳区经济开发区大涌路三和名商科技园	
实验室中试检测的产品: 产品共5类, 分别是: 四路录像监控系统, 八路录像监控系统, 口翠湖一体机, 360全景, 客流统计系统	
审核类型: <input checked="" type="checkbox"/> 初次审核 <input type="checkbox"/> 监督审核 <input type="checkbox"/> 再次审核 <input type="checkbox"/> 扩项 <input type="checkbox"/> 其他	
审核评审组及审核方式: 文件审核: 孙树强, 饶金辉 现场审核: /	
审核日期: 2022/7/29	
评定依据: 依据《比亚迪商用车供应商实验室认可流程》中对供应商实验室认可的要求。	
审核得分: 综合得分: 88.4(总分 100分) 综合得分=体系审核分数*40%+检测能力分数*60% (计分情况详见本报告第2节)	
评审结论: <input checked="" type="checkbox"/> 认可, 认可范围见附件1 <input type="checkbox"/> 不认可, 理由:	
复评及认可有效期: <input type="checkbox"/> 复评: 五年 截止日期: <input type="checkbox"/> 复评: 四年 截止日期: <input type="checkbox"/> 复评: 三年 截止日期:	
编制: 2022.8.1 审核: 2022.8.1 批准: 比亚迪汽车商用车研究院	

▲ BYD Certified Laboratory

