



NWP4 Quick Coupling



Type: Flat face
 Size: 1/4" to 2"
 Material: Stainless steel 304/316L
 Standard: ISO16028
 Max working pressure: 30Mpa
 Operation under pressure: Forbidden

NWA Quick Coupling



Type: With poppet valve
 Size: 1/4" to 2"
 Material: Stainless steel 304/316L
 Standard: ISO7241-A
 Max working pressure: 35Mpa
 Operation under pressure: Forbidden

NWB Quick Coupling



Type: With poppet valve
 Size: 1/4" to 1"
 Material: Stainless steel 304/316L
 Standard: ISO7241-B
 Max working pressure: 35Mpa
 Operation under pressure: Forbidden

NWG3 Series



Type: With poppet valve
 Size: 1/4" to 1-1/2"
 Material: Stainless steel 304/316L
 Max working pressure: 35Mpa
 Operation under pressure:
 With residual pressure is allowed

Interchangeable with Hydac HP series
 Interchangeable with Stauff SRT series

NWG5 Series



Type: With poppet valve
 Size: 1/4" to 2"
 Material: Stainless steel 304/316L
 Max working pressure: 35Mpa
 Operation under pressure:
 With residual pressure is allowed

Interchangeable with Eaton W6000 series
 Interchangeable with Stauff W-6000 series
 Interchangeable with Gromelle W-6000 series

NWG6 Series



Type: With poppet valve
 Size: 1/4" to 1"
 Material: Stainless steel 304/316L,
 carbon steel
 Max working pressure: 35Mpa
 Operation under pressure:
 With residual pressure is allowed

Interchangeable with Faster VV series



NWM Series



Type: With poppet valve
 Size: 1/4" to 2"
 Material: Stainless steel 304/316L, carbon steel
 Max working pressure: 35Mpa
 Operation under pressure: Forbidden
 Interchangeable with Eaton H5000 series

NWST Series



Type: Straight through
 Size: 1/4" to 1-1/4"
 Material: Stainless steel 304/316L, carbon steel, brass
 Max working pressure: 35Mpa
 Operation under pressure: Forbidden
 Interchangeable with Parker ST series
 Interchangeable with Inteva 140 series

NW-FFI Series



Type: Flat face
 Size: 3/8", 1/2", 3/4"
 Material: Stainless steel 304
 Max working pressure: 25Mpa
 Operation under pressure: Forbidden
 Interchangeable with Faster 2FFN, 2FFI series
 Interchangeable with Parker FFI series
 Interchangeable with Eaton MLFF series
 Interchangeable with Hansen FF series

NW1013 Series

Special use for rolling mill



Type: Flat face
 Size: M18*1.5, M24*1.5, M30*1.5
 Material: Stainless steel 304
 Max working pressure: 25Mpa
 Application Range: Metallurgical mill, industrial hydraulic system
 Interchangeable with Walther HC series

NW1030 Series

Special use for rolling mill



Type: Flat face
 Size: M24*1.5
 Material: Stainless steel 304
 Max working pressure: 25Mpa
 Interchangeable with Staubli SPX series

NW-CHR Series

Special use for rolling mill



Type: Plug in
 Size: 1/2", 3/4", 1-1/2"
 Material: Stainless steel 304
 Max working pressure: 25Mpa
 Application Range:
 It is used together with the connecting plate of the Metallurgical mill as a set (inner dimension)



NWP4 Quick Coupling



Type: Flat face
 Size: 1/4" to 2"
 Material: Carbon steel
 Standard: ISO16028
 Max working pressure: 30Mpa
 Operation under pressure: Forbidden

NWA Quick Coupling



Type: With poppet valve
 Size: 1/4" to 2"
 Material: Carbon steel
 Standard: ISO7241-A
 Max working pressure: 35Mpa
 Operation under pressure: Forbidden

NWB Quick Coupling



Type: With poppet valve
 Size: 1/4" to 1"
 Material: Carbon steel
 Standard: ISO7241-B
 Max working pressure: 35Mpa
 Operation under pressure: Forbidden

NW-1012 Series



Type: Flat face
 Size: NPT 1"
 Material: Carbon steel
 Max working pressure: 25Mpa
 Operation under pressure: Forbidden
 Application Range: Natural gas, petroleum
 Interchangeable with Parker

NWCG Series



Type: Straight through, ferrule, right-angle, cross and other kinds of standard connector
 Size: R1/8 , R3/8, M12*1, ZG1/4, G1/8
 Material: Stainless steel 304/316L
 The hose assembly can be provided

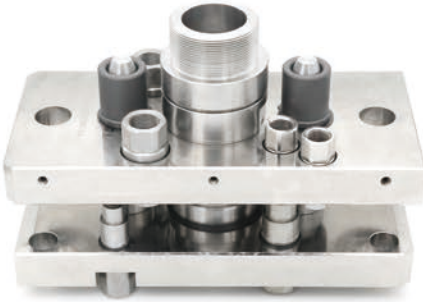
NWXF Series



Type: With poppet valve
 Size: R1/8, R3/8, M12*1, ZG1/4, G1/8
 Material: Stainless steel 304
 Application Range: Fire-fighting equipment and other fields

NW-YMC10324 Series

Special use for rolling mill



Type: Quick connecting device
 Size: Male plate 348*158*38.5mm
 Female plate 350*162*38.5mm
 Components: Quick connecting plate, quick coupling plug-in type, guide sleeve, locating pin etc.

NW-TD Rotary Joint



Max Speed: 10r/PM
 Max temperature: 120 °C
 Max working pressure: 1Mpa
 Applicable media: Water, coolant
 Material: Stainless steel

NW-HS-X-50G-25 Rotary Joint



Max Speed: 500r/PM
 Max temperature: 100 °C
 Max working pressure: 1Mpa
 Applicable media: Water, coolant
 Material: Brass for case, stainless steel for hollow shaft and other parts

NW-HMS-X-15G-8 Rotary Joint



Max Speed: 100r/PM
 Max temperature: 100 °C
 Max working pressure: 1.2Mpa
 Applicable media: Water, coolant
 Material: Stainless steel

NW-MSFA-20 Dual Channel Rotary Joint



Max Speed: 100r/PM
 Max temperature: 120 °C
 Max working pressure: 1Mpa
 Applicable media: Water, coolant
 Material: Stainless steel

NW-MDFA-20 Single Channel Rotary Joint



Max Speed: 10r/PM
 Max temperature: 120 °C
 Max working pressure: 1Mpa
 Applicable media: Water, coolant
 Material: Stainless steel