



科尼乐机械设备有限公司  
CO-NELE MACHINERY CO., LTD.

地址 (Add): 青岛市城阳区玉皇岭工业园  
(Yuhuangling Industrial Park Chengyang Dist Qingdao City China)

邮编 (P.C.): 266107

电话 (Tel): 0086-532-8778 1087 国内 (Domestic)  
0086-532-8778 1088 国际 (International)  
0086-152 5327 7366

邮箱 (E-mail): sales@co-nele.com

网址 (http): http://www.co-nele.com



搅动梦想 凝结友谊

Mixing Dream Concreting Friendship

**CMP** 系列立轴行星搅拌机

高质量、高效率、低维护

High efficiency and high quality, low maintenance



**CR/CRV** 强力混合机



因本产品不断改进如有改动恕不另行通知  
Production may change due to technical progress subject may be modified without notice



结构紧凑, 传动平稳, 样式新颖, 性能卓越, 经济耐用, 安装、维修方便, 不存在漏浆问题。  
Compact construction. Steady driving. Original mode. Excellence performance. Long operating life. With low investment and operational costs. Easy to install and maintain.  
No leakage problem. Leading products.

## 公司简介 Company profile

科尼乐机械设备有限公司位于美丽的海滨城市--青岛,国家科技创新企业,最具专业化、最具实力的混合设备制造企业之一,产品在多个行业,多个领域广泛应用。科尼乐源于欧洲先进、严谨的技术理念,时刻关注国内外业界的技术动向,掌握和剖析同行产品的优缺点。在产学研方面积极开展,同国内一类大学进行新材料、新工艺的深入合作研究,注重科技成果的转化,先后获得100余项国家专利,其中包含多项发明专利。科尼乐产品一直以优异的品质应用于国内各省市并出口至欧洲、美洲、亚洲、非洲、大洋洲等80余国家及地区。

*Qingdao CO-NELE Machinery Co.,Ltd is one of the national science & technology innovating enterprises located in Qingdao, a beautiful coastal city. The company is the most professional one and ranks in the top of the mixing equipments manufacturers with its products applied widely. Basing on the advanced European technology, We keep close eye to the state of the art and we know well about competitors and ourselves. We pay great attention to product research and development, and till now have gained over 100 national patents. CO-NELE provides high quality products throughout the country and also exports to more than 80 countries and regions from Europe, America, Asia, Africa and Oceanica.*



## 企业资质/专利证书 Enterprise qualification/Patent certificates

- ▶ 20+年行业积淀  
*20+ years industry experience*
- ▶ 100多项国家专利技术  
*100+ National patents*
- ▶ 10000多全球服务用户  
*10000+ Global users*



- 1、CMP立轴行星式搅拌机国内市场占有率第一
- 2、山东省制造业单项冠军企业
- 3、2023青岛首批工业赋能数字化示范车间
- 4、国家级高新技术企业
- 5、山东省科学技术奖、青岛市科学技术奖
- 6、青岛市企业技术中心、工业设计中心
- 7、山东省“专精特新”企业
- 8、国内同行业首家通过欧盟CE认证
- 9、山东省著名商标、青岛市著名商标
- 10、青島市民营领军标杆企业
- 11、知识产权管理体系认证
- 12、混合搅拌设备研究院A级单位
- 13、中国最大的搅拌机生产基地
- 14、国内第一台全油浴润滑方式免维护的集成化行星式减速机。
- 15、中国非标搅拌设备的设计研发制造中心
- 16、质量、环境、健康安全三体系示范单位
- 17、设计、制造能力最强的行星混合设备企业

1. Planetary mixer has the first domestic market share.
2. Shandong province manufacturing industry single champion enterprise.
3. 2023 Qingdao's first batch of industrial empowerment digital demonstration workshops.
4. National high-tech enterprise.
5. Science and Technology Award of Shandong Province & Qingdao.
6. Qingdao Enterprise Technology Center, Industrial Design Center.
7. Specialization, refinement, differentiation, innovation" middle and small-sized enterprises of Shandong province.
8. The first company who got CE certificate in the same industry in China.
9. Famous trademarks in Shandong Province and Qingdao City.
10. Qingdao Private Leading Benchmark Enterprise.
11. Intellectual Property Management System Certification.
12. A-level unit of Mixing Machine Research Institute.
13. The largest production base planetary mixer in China.
14. With the First entirely oil-immersed gear box equipped in planetary type mixer in China.
15. China non-standard mixing equipment design research and manufacture center.
16. Obtained ISO9001, ISO14001, ISO45001 system certification.
17. The strongest design and manufacturing capability planetary mixer manufacturer.



## CMP立轴行星式搅拌机配置 CMP mixer configuration

### 1 传动装置 Gearing system

传动装置由电机带动本公司专门设计的硬齿面减速机(专利产品)进行传动,电机与减速机之间安装弹性联轴器或液力耦合器(选配,即使在满载情况下也可保证正常启动),减速机由我公司吸收欧洲先进技术设计并具有完全独立知识产权,新研发的减速机,具有噪音低、扭矩大、耐用性强的特点。即使在苛刻的生产条件下,也能将功率平衡有效的分配到各搅拌装置,从而保证搅拌机正常运转工作,并达到高稳定性、低维护成本的目的,运行可靠性更高。

*Driving system consists of motor and hardened surface gear which is specialized designed by CO-NELE(patented). Flexible coupling and hydraulic coupling(option)connects motor and gearbox. The gearbox is designed by CO-NELE (completely independent intellectual property rights owned) absorbing European advanced technology. The improved model has lower noise, longer torque and more durable. Even in strict production conditions, the gearbox can distribute power effectively and evenly to each mix end device, ensuring normal operation, high stability and low maintenance.*

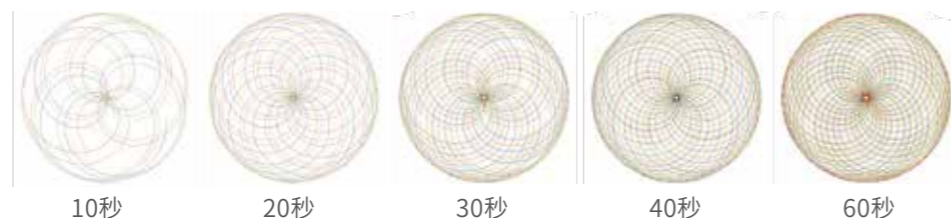


### 2 运动轨迹 Motion track

搅拌叶片的公转、自转是经过深入的研究以及不断测试而确定的,使搅拌机在搅拌各种粒径及比重的骨料不产生离析的情况下得到最大的生产率。搅拌筒内的物料运动轨迹圆滑、连续。本图显示,当公转体转动一周时,搅拌叶片的运动轨迹覆盖了整个搅拌筒。

*The revolution and rotation speed of the blades have been extensively studied and tested to give the mixer a high output without causing the segregation of materials with different grain size and weight. The movement of the material inside the trough is smooth and continuous.*

*As shown in the picture, the blades track covers the whole bottom of the trough after a cycle.*



### 3 观察口 Observing port

检修门上设有观察口,可以在搅拌机不断电的状态下观察其正常工作时搅拌物料的情况。

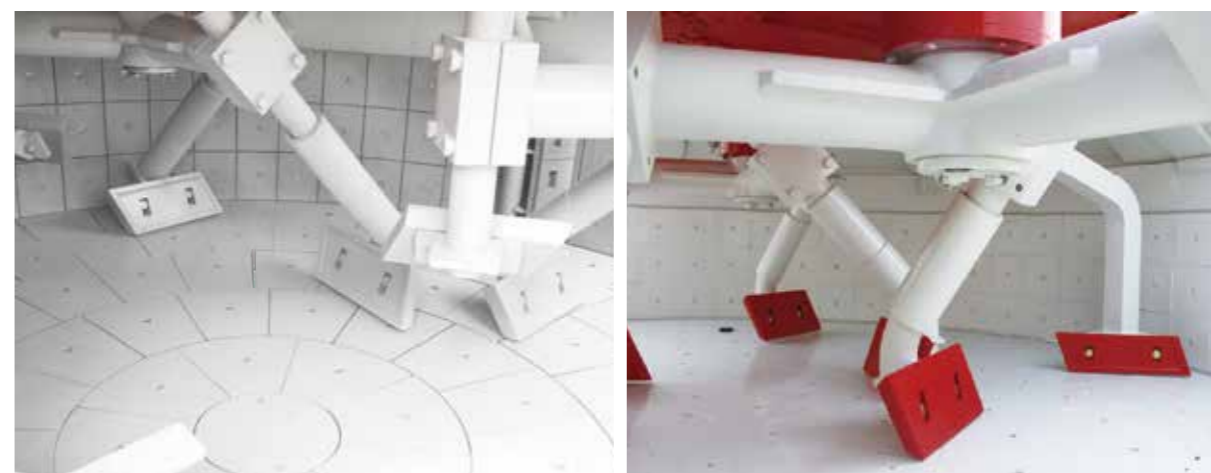
*There is an observing port on the maintaining door. You can observe the mixing situation without cutting off power.*



### 4 搅拌装置 Mixing device

靠安装在搅拌筒内带叶片的行星轴旋转时将物料挤压、翻转等复合动作进行强制性搅拌。搅拌叶片设计为平行四边形结构(专利产品),客户可根据实际使用磨损状况旋转180°进行重复使用,有效的提高叶片的利用率和寿命,并且针对卸料速度设计了专门的卸料刮板,提高生产率。

*Compulsory mixing is realized by composite moves of extruding and overturning driven by rotating planets and blades. Mixing blades are designed in parallelogram structure(patented), which can be turned 180°for reuse to increase service life. Specialized discharge scraper has been designed according to discharge speed in order to increase productivity.*



## 5 卸料装置 Discharging device

科尼乐根据客户的不同要求,可采用气动、液动等方式开关卸料门,卸料门数量最多可以开三个,并且在卸料门上设计有专门的密封装置,以确保其密封牢固、控制可靠。

According to the different demands of customers, the discharging door can be opened by hydraulic, pneumatic or by hands. The number of the discharging door is three at most. And there is special sealing device on the discharging door to ensure the sealing reliable.



## 6 液压泵站 The hydraulic power unit

专门设计的液压泵站,可满足搅拌机配置多个卸料门要求,并有手动卸料功能,紧急情况下可手动打开卸料门。

A special designed hydraulic power unit is used to provide power for more than one discharging gates. On emergency, these discharging gates can be opened by hand.



## 7 检修门、检修门安全装置 Maintaining door and security device

为提高客户使用产品的安全性,检修门上全部使用可靠性高,灵敏度高的安全开关,检修时安全、方便。

In order to improve the security of using the product, reliable high-sensitive security switches are used in the maintaining door to make the maintaining work safe and convenient.



## 8 水路装置 Water device

水路采用上置式结构(专利产品),解决管路中残余外加剂和水现象,避免了客户换配方时造成损失。喷头采用螺旋形实心圆锥形喷嘴,具有细密均匀的雾化效果,覆盖面积大,使物料搅拌更均匀。

Overhead structure is used to water(patent products). It solves the problem of residual additive and water in pipe. Avoid the customer loss in formula changing. The nozzle which adopts spiral solid cone nozzle, has a fine uniformatomization effect, large covering area and make the material more uniform mixing.



## 9 实验中心 Experimental center

为了满足不同客户的物料混合要求,公司设立有专门的实验中心,可以提供全项的物料试料实验,为客户提供最合理的搅拌方案来满足客户的使用方便。

We set a testing center for all kinds of material to meet customer's different materials mixing.



## CMP实验室专用立轴行星式搅拌机 CMP laboratory planetary mixer



- 1、适用于精密配料实验、搅拌站配方实验、新型材料实验等；
- 2、适用于高等院校、科研院所、实验室教学等；
- 3、搅拌筒材质可根据不同的混合实验物料进行定制、灵活度高；
- 4、搅拌工具模式可以根据物料的不同性质进行高端定制；
- 5、设备可选用变频电机、实现无极调速、实现变频搅拌；
- 6、设备安全可靠、体积小、噪音低、环保性能高；
- 7、整机设计为轮式结构、方便移动；
- 8、卸料装置选用手动和自动两种方式、开关灵活、卸料干净；
- 9、机型有10L、50L、100L、150L等容量规格可供选择；

1. Apply to precision batching experiment, mixing station formula experiment, new material experiment, etc.
2. Apply to universities, research institutes, laboratories, etc.
3. Material of mixing barrel can be customized according to different experimental materials, with high flexibility.
4. Mixer mode can be customized high-end according to different properties of materials;
5. Variable-frequency motor can be selected to realize stepless speed regulation and frequency conversion stirring.
6. The equipment is safe and reliable with small size, low noise and high environmental performance.
7. Designed as a wheeled structure, the machine is easy to move.
8. Unloading device adopts manual and automatic forms, with flexible switch and clean discharging.
9. The model has 10L, 50L, 100L, 150L capacity specifications to choose from.

## CMP搅拌机技术参数表 Technical data

型号 Type	CMP50	CMP100	CMP150	CMP250	CMP330	CMP500	CMP750	CMP1000
项目 Item								
出料容量 Output capacity(L)	50	100	150	250	330	500	750	1000
进料容量 Input capacity(L)	75	150	225	375	500	750	1125	1500
出料质量 Output weight(Kg)	120	240	360	600	800	1200	1800	2400
搅拌额定功率 Mixing power(Kw)	3	5.5	7.5	11	15	18.5	30	37
液压卸料功率 Discharging power(Kw)	气动卸料 (可选配液压卸料)							3
行星/搅拌臂数 Planet/mixing arm	1/2	1/2	1/2	1/2	1/2	1/2	1/3	2/4
侧刮板 Paddle(nr)	1	1	1	1	1	1	1	1
卸料刮板 Discharging paddle(nr)	1	1	1	1	1	1	1	1
搅拌机重量 Weight(Kg)	700	1100	1300	1500	2000	2400	3900	6200
提升料斗功率 Lifting power(Kw)	-	2.2	2.2	3	4	4	7.5	11
主机外形尺寸 Dimension(mm)	L	950	1670	1670	1860	1870	2230	2580
	W	790	1460	1460	1650	1870	2080	2340
	H	1200	1450	1620	1780	1855	1880	2195

型号 Type	CMP1250	CMP1500	CMP2000	CMP2500	CMP3000	CMP4000	CMP4500	CMP5000
项目 Item								
出料容量 Output capacity(L)	1250	1500	2000	2500	3000	4000	4500	5000
进料容量 Input capacity(L)	1875	2250	3000	3750	4500	6000	6750	7500
出料质量 Output weight(Kg)	3000	3600	4800	6000	7200	9600	10800	12000
搅拌额定功率 Mixing power(Kw)	45	55	75	90	110	160	200	250
液压卸料功率 Discharging power(Kw)	3	3	4	4	4	4	4	4
行星/搅拌臂数 Planet/mixing arm	2/4	2/4	3/6	3/6	3/9	3/9	3/9	3/9
侧刮板 Paddle(nr)	1	1	1	1	1	1	1	1
卸料刮板 Discharging paddle(nr)	1	1	2	2	2	2	2	2
搅拌机重量 Weight(Kg)	6700	7700	9500	11000	12000	16500	17500	18500
提升料斗功率 Lifting power(Kw)	15	15	22	30	37	-	-	-
主机外形尺寸 Dimension(mm)	L	3060	3060	3230	3625	3900	4560	4560
	W	2760	2760	2902	3230	3550	4150	4150
	H	2305	2305	2470	2630	2695	3200	3625

## CMPS立轴快速搅拌机配置 CMPS mixer configuration

### 1 搅拌装置 Mixing device

靠安装在搅拌筒内带叶片的行星轴旋转时将物料挤压、翻转等复合动作进行强制性搅拌。搅拌叶片设计为平行四边形结构(专利产品), 客户可根据实际使用磨损状况旋转180°进行重复使用, 有效的提高叶片的利用率和寿命, 并且针对卸料速度设计了专门的卸料刮板, 提高生产率。

Mixing blades are designed in parallelogram structure(planted), which can be turned 180°for reuse to increase semice life. Specialized discharge scraper has been designed according to discharge speed in order to increase productivity.



搅拌方式一

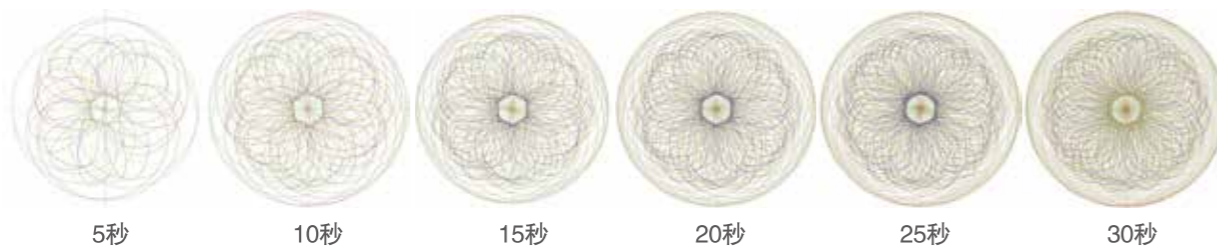
搅拌方式二

### 2 运动轨迹 Motion track

搅拌叶片的公转、自转是经过深入的研究以及不断测试而确定的, 使搅拌机在搅拌各种粒径及比重的骨料不产生离析的情况下得到最大的生产率。搅拌筒内的物料运动轨迹圆滑、连续。本图显示, 当公转体转动一周时, 搅拌叶片的运动轨迹覆盖了整个搅拌筒。

The revolution and rotation speed of the blades have been extensively studied and tested to give the mixer a high output without causing the segregation of materials with different grain size and weight. The movement of the material inside the trough is smooth and continuous.

As shown in the picture, the blades track covers the whole bottom of the trough after a cycle.



## CMPS搅拌机技术参数表 Technical data

型号 Type	CMPS100	CMPS150	CMPS250	CMPS330	CMPS500	CMPS750	CMPS1000
项目 Item							
出料容量 Output capacity(L)	100	150	250	330	500	750	1000
出料质量 Output weight(Kg)	120	180	300	395	600	900	1200
搅拌额定功率 Mixing power(Kw)	7.5	11	15	18.5	22	37	45
液压卸料功率 Discharging power(Kw)	气动卸料 (可选配液压卸料)						3
行星数 Planet	2	2	2	2	2	2	2
主/高速辅助搅拌数 Main/Fly-cutter planet(nr)	1/1	1/1	1/1	1/1	1/1	1/1	1/1
侧刮板 Paddle(nr)	1	1	1	1	1	1	1
卸料刮板 Discharging paddle(nr)	1	1	1	1	1	1	1
搅拌机重量 Weight(Kg)	1400	1600	1800	2000	2500	4700	6200
提升料斗功率 Lifting power(Kw)	2.2	2.2	3	4	4	7.5	11
主机外形尺寸 Dimension(mm)	L	1664	1664	1856	1862	2220	2581
	W	1453	1453	1648	1850	2071	2336
	H	1487	1712	1817	1895	1935	2245

型号 Type	CMPS1500	CMPS2000	CMPS2500	CMPS3000	CMPS4000	CMPS4500	CMPS5000
项目 Item							
出料容量 Output capacity(L)	1500	2000	2500	3000	4000	4500	5000
出料质量 Output weight(Kg)	1800	2400	3000	3600	4800	5400	6000
搅拌额定功率 Mixing power(Kw)	75	90	110	132	200	250	315
液压卸料功率 Discharging power(Kw)	3	4	4	4	4	4	4
行星数 Planet	2	3	3	3	3	3	3
主/高速辅助搅拌数 Main/Fly-cutter planet(nr)	1/1	2/1	2/1	2/1	2/1	2/1	2/1
侧刮板 Paddle(nr)	1	1	1	1	1	1	1
卸料刮板 Discharging paddle(nr)	1	2	2	2	2	2	2
搅拌机重量 Weight(Kg)	8000	9000	11500	12000	17500	19000	20500
提升料斗功率 Lifting power(Kw)	15	22	30	37	-	-	-
主机外形尺寸 Dimension(mm)	L	3223	3625	3893	3893	4562	4562
	W	2902	3230	3550	3550	4150	4150
	H	2470	2695	2875	3085	3200	3625

## CMPH重载行星式搅拌机

CMPH heavy duty planetary mixer



### CMPH搅拌机技术参数表 Technical datag

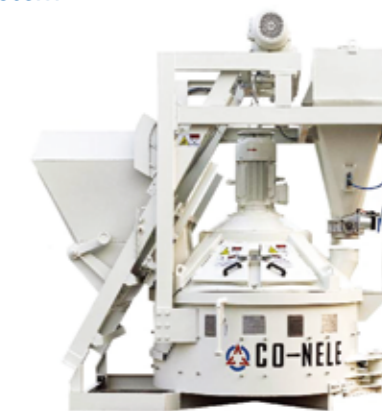
项目 Item	型号 Type	CMPH330	CMPH500	CMPH750	CMPH1000	CMPH1500	CMPH2000
出料容量 Output capacity(L)		500	750	1125	1500	2250	3000
出料质量 Output weight(Kg)		330	500	750	1000	1500	2000
搅拌额定功率 Mixing power(Kw)		22/30	30/37	37/45	45/55	55/75	75/90
行星/主搅拌 Planet		1/2	1/2	1/3	2/4	2/4	3/6
侧刮板 Paddle(nr)		1	1	1	1	1	1
卸料刮板 Discharging paddle(nr)		1	1	1	1	1	2

## 选配项 Optional items

### 1 提升料斗及计量装置 Skip hoist and weighing system

本机为CMP搅拌机配料斗提升装置及计量装置。料斗提升装置配有防卡滞型进料装置(专利产品),防止搅拌时产生的灰尘外溢,达到环保的效果。粉料计量及水计量装置(含粗、精计量)设计更合理,计量精度更高。

Planetary mixer equipped with skip hoist and weighing system. The inlet will open and close automatically when skip hoist lift to the inlet or descend (Patent), preventing dust from coming out of mixer to a result of Environmental. Cement scale and water scale (Include precision measurement) are designed very reasonably. Weighing is more accurate.



### 2 环保型防卡滞型进料装置 Environment-friendly anti-block feeding device

专门设计的环保型进料装置(专利技术),独特的外滑道式导轨设计,使关门时无卡滞现象,密封更严密。

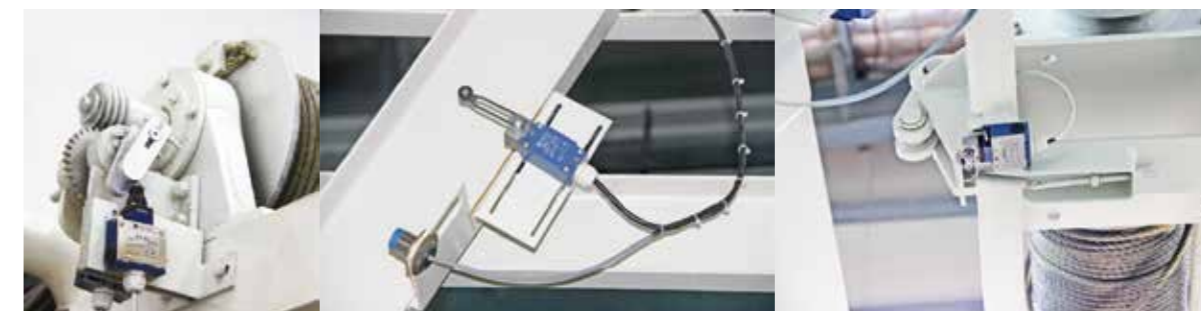
Specially designed environment-friendly anti-block feeding device(patented). The design of outer slide rail prevents the inlet gate from blocking and leads to better sealing.



### 3 提升料斗安全装置 The security device of skip hopper

提升料斗在上升过程中,靠提升料斗安全装置对料斗冲顶进行保护。

The security device of skip hopper safeguards against head-clashing when the hopper is climbing up.



## 4 高压泵、高压喷头(高压清洗) High pressure washing

自动高压清洗系统,采用旋转高压喷头几分钟内将搅拌筒壁、搅拌工具、搅拌筒盖彻底清洗。大大提高清洗效果,减少清洗时间、降低劳动强度并改善工作环境。

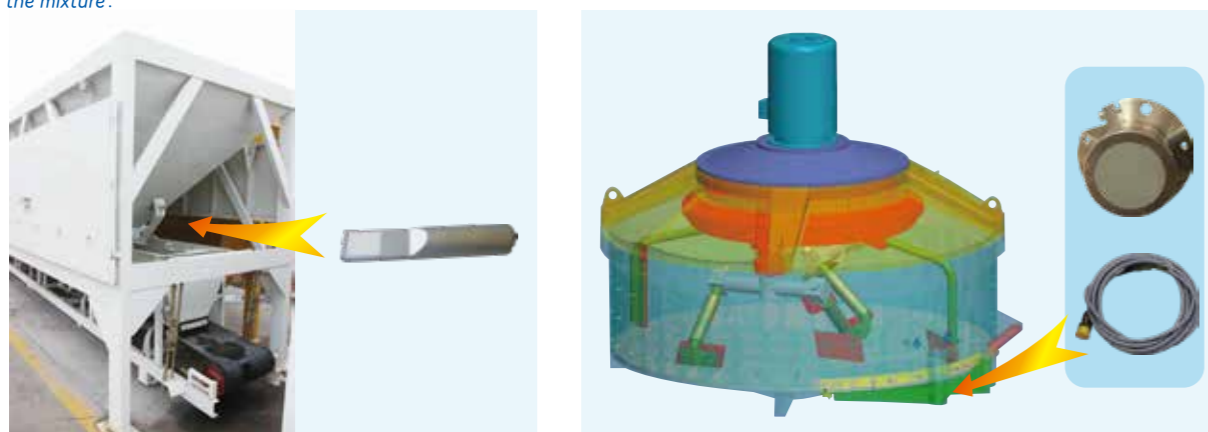
*Automatic high-pressure cleaning system, the use of rotating high-pressure nozzle within a few minutes, stirring drum wall, mixing tools, the mixing tube to cover thoroughly cleaned. Greatly improve the cleaning effect, reducing cleaning time, reduce labor intensity and improve the working environment.*



## 5 温度湿度测试仪 Temperature and moisture sensor

高精度的动态物料温度、湿度测量,提供最精确的物料搅拌过程中含水量及温度测量,使物料特性可以有更高的要求。

*High precision and dynamical measuring supplies accurate value of temperature and moisture, which can achieve better performance of the mixture.*



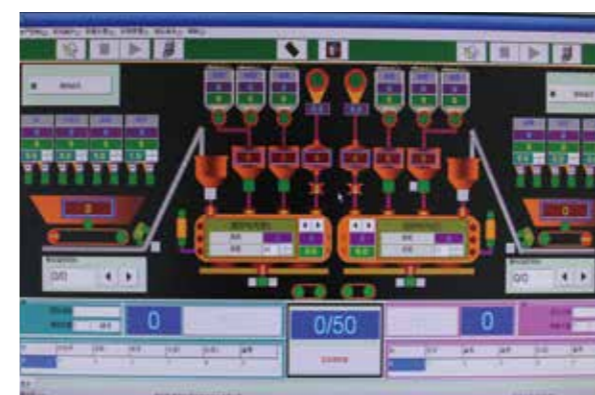
## 控制系统 Control system

我公司的搅拌生产控制系统有两种模式,第一种模式主要由计算机系统、电子配料秤、控制柜和强电柜组成;第二种模式主要由PLC、触摸屏、电子配料秤和控制柜组成;系统采用人机界面,菜单选择的工作方式,全自动控制物料配比,搅拌及卸料。采用多屏显示不同的工作机组界面,方便实时监控和生产管理。美观、大方的设计,方便、人性化的控制理念,使操作更简单、易懂,并且电器件均采用国外知名品牌以确保其稳定性。

生产控制系统适用范围广,各配料称重信号由独立称重仪表采集,通过串行通讯送至工控机,工控机内的专用控制板卡采集外部数字量信号实现生产自动化,配料精度高,抗干扰能力强。我们还可以为您量身定做保证达到您的控制要求。

*We provide two modes of control system. The first mode consists of industrial computer, weighers, control cabinet and high voltage cabinet. The second mode is made up of PLC, touch screen, weighers, and control cabinet. Both modes adopts man-machine interface, menu options, full automatic control of material ratio. Multiply display of different working process makes it easy to monitor and manage production. Easy operation owes to the beautiful outline design and humanized control method. All electrical components are from famous foreign brands to ensure the stability of the system.*

*The control system has a wide application. Each weigher signal collected by independent weighing instrument, transferred by serial communications to specialize computer control board collecting external digital signals and realizes automatic production. High precision, strong anti-jamming capability. Besides, customized services are provided.*





## 服务系统 Services



### 售前服务 Service before sales

担当客户的参谋和助手, 让用户的每一份投资都获得丰厚的回报; *Gire advice to customer*  
设备型号的选择: *Assist customer to choose the right model*  
根据客户的特殊要求, 设计制造产品; *Fabricate according to customer's requirement*  
为客户培训技术人员; *Train operators for customer*  
提供新、特、难等物料搅拌的技术咨询; *Technology consulting support for special material mixing*  
拟定合适的技术方案。 *Supply a suitable technical proposal*



### 售中服务 Service in sales

代办运输; *Transportation*  
产品的预验收; *Inspection*  
向客户介绍科尼乐的服务体系。 *Introduce service system to customers*



### 售后服务 Service after sales

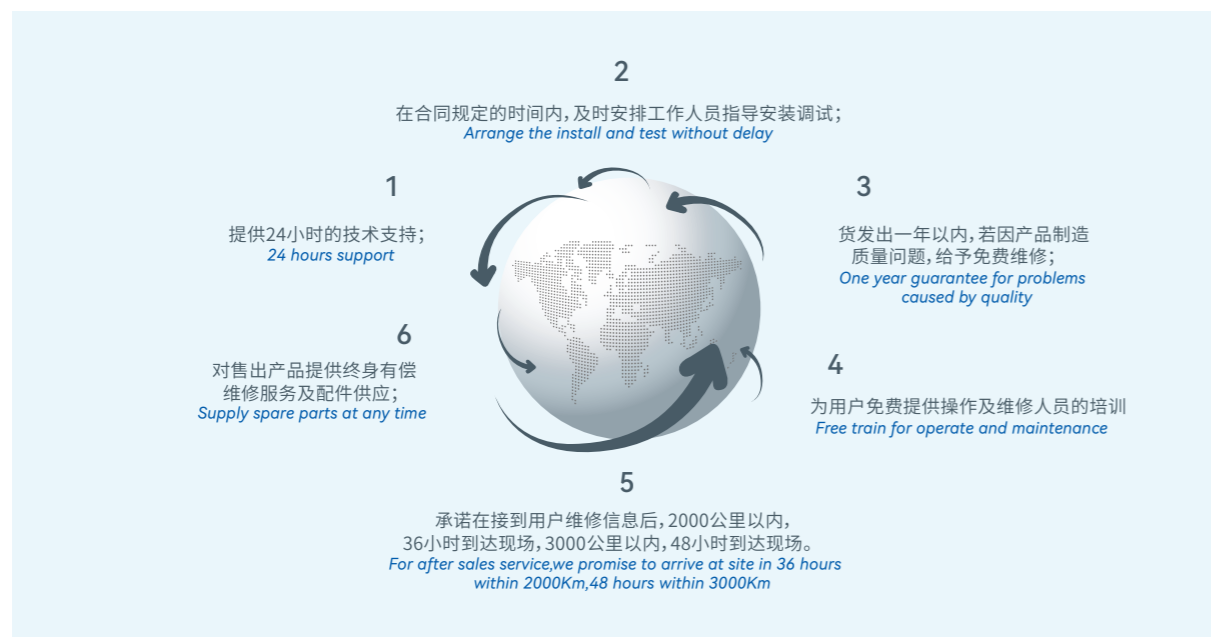
协助用户拟定首次施工方案; *Assist customer make the construction scheme*  
设备安装调试; *Machine install and test*  
现场排除故障, 快速主动; *Site trouble clearing*  
提供技术交流的机会; *Technical exchange*  
免费拨打热线 *Free hotline: 400-661-6566*



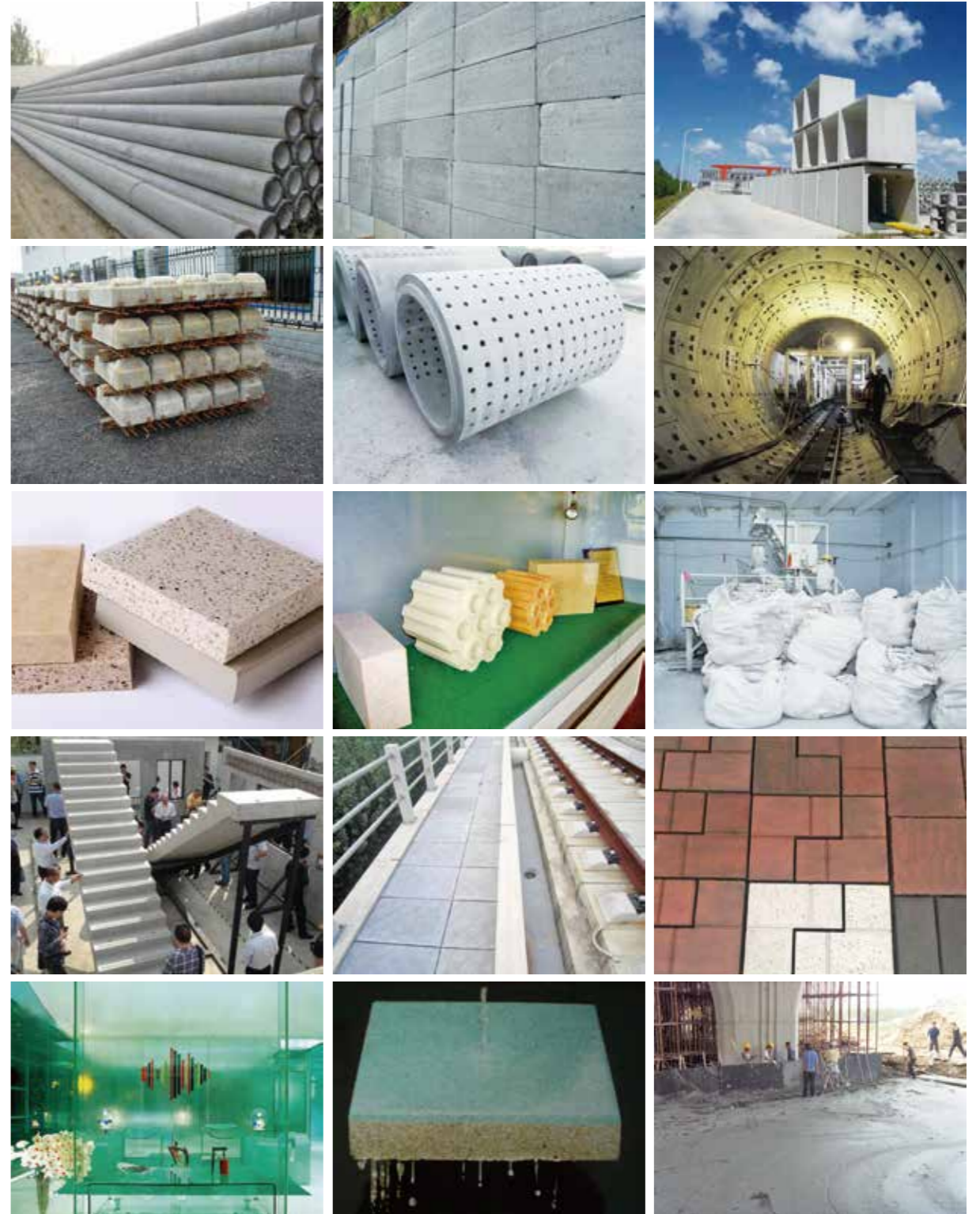
### 增值服务 Value added service

重点项目全过程、零距离的技术跟踪服务; *Overall process follow-up service*  
设备定期巡检服务; *Regular visit inspect*  
为客户提供专业的定期保养标准。 *Periodic maintenance standard made for customer*

## 混合机服务承诺 Service Promise



## 部分应用行业 Applications





# 工程案例 Projects

