



科尼乐机械设备有限公司
CO-NELE MACHINERY CO., LTD.

地址 (Add): 青岛市城阳区玉皇岭工业园
(Yuhuangling Industrial Park Chengyang Dist Qingdao City China)

邮编 (P.C.): 266107

电话 (Tel): 0086-532-8778 1087 国内 (Domestic)
0086-532-8778 1088 国际 (International)
0086-152 5327 7366

邮箱 (E-mail): sales@co-nele.com

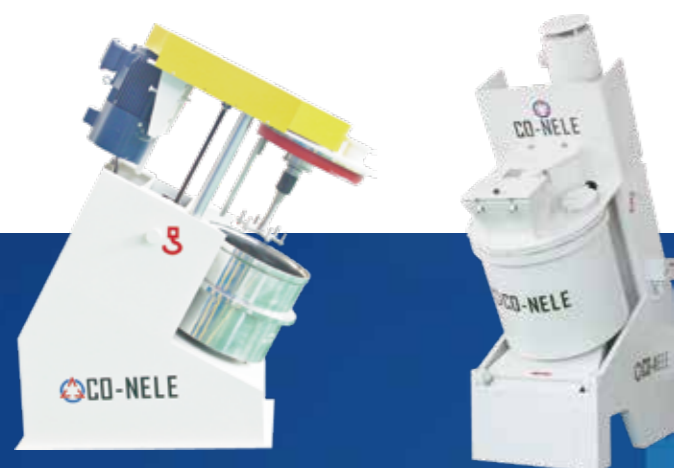
网址 (http): http://www.co-nele.com



工业原料混合/造粒制备技术领航者
Leading Mixing / Granulating Technology

CR / CRV 系列强力混合机

高质量、高效率、低维护
High efficiency and high quality, low maintenance



CEL / CR 混合机/造粒机



因本产品不断改进如有改动恕不另行通知
Production may change due to technical progress subject may be modified without notice



混合、造粒、反应、乳化、弥散、分离、增塑、成形、排气、破碎、纤化、分解、聚结
Mixing, granulation, reaction, emulsification, dispersion, separation, plasticizing, forming, exhaust, crushing, fibrosis, decomposition, coalescence.

公司简介 Company profile

科尼乐机械设备有限公司是一家专门从事混合、造粒成型设备的研发、制造和销售的高新技术企业，涵盖全系列强力混合机、混合造粒机设备。科尼乐公司系国家高新技术企业，山东省“专精特新”企业、青岛市企业技术中心、青岛市民营领军标杆企业、山东省科学技术进步奖获得企业。科尼乐机械一直秉承“一切以客户为中心”的理念，形成自己的核心技术并引进德国技术，在德国设立技术研发中心。

产学研方面，同国内一类大学进行新材料、新工艺的深入合作研究，注重科技成果的转化，先后获得100余项国家专利，其中包含多项发明专利。在产品定位方面一直属于行业高端，整厂生产线、高端定制和新材料实验应用等领域。科尼乐产品一直以优异的品质应用于国内各省市并出口至欧洲、美洲、亚洲、非洲、大洋洲等80余国家及地区。

Qingdao CO-NELE Machinery Co.,Ltd is one of the national science & technology innovating enterprises located in Qingdao. The company is the most professional one and ranks in the top of the mixing, granulating equipments manufacturers with its products applied widely. Basing on the advanced European technology, We keep close eye to the state of the art and we know well about competitors and ourselves.

We pay great attention to product research and development, and till now have gained over 100 national patents. It has always been at the high end of the industry in terms of positioning of mixers, including whole-plant production lines, high-end customization, and new material experimental applications. CO-NELE provides high quality products throughout the country and also exports to more than 80 countries and regions from Europe, America, Asia, Africa and Oceanica.



企业资质/专利证书 Enterprise qualification/Patent certificates

- ▶ 20+年行业积淀
20+ years industry experience
- ▶ 100多项国家专利技术
100+ National patents
- ▶ 10000多全球服务用户
10000+ Global users



- 1、山东省制造业单项冠军企业
- 2、2023青岛首批工业赋能数字化示范车间
- 3、国家级高新技术企业
- 4、山东省科学技术奖、青岛市科学技术奖
- 5、青岛市企业技术中心
- 6、青岛市工业设计中心
- 7、山东省“专精特新”企业
- 8、青岛市专精特新示范企业
- 9、国内同行业首家通过欧盟CE认证
- 10、山东省著名商标、青岛市著名商标
- 11、青岛市民营领军标杆企业
- 12、知识产权管理体系认证
- 13、混合搅拌设备研究院A级单位
- 14、中国最大的搅拌机生产基地
- 15、中国非标搅拌设备的设计研发制造中心
- 16、质量、环境、健康安全三体系示范单位
- 17、设计、制造能力最强的行星混合设备企业

1. Shandong province manufacturing industry single champion enterprise.
2. 2023 Qingdao's first batch of industrial empowerment digital demonstration workshops.
3. National high-tech enterprise.
4. Science and Technology Award of Shandong Province & Qingdao.
5. Qingdao Enterprise Technology Center, Industrial Design Center.
6. Specialization,refinement,differentiation,innovation"enterprises of Shandong province.
7. Shandong Province famous trademark.
8. A-level unit of Mixing Machine Research Institute.
9. The first company who got CE certificate in the same industry in China.
10. Intellectual Property Management System Certification.
11. The largest production base intensive mixer in China.
12. China non-standard mixing equipment design research and manufacture center.
13. Obtained ISO9001, ISO14001, ISO45001 system certification.
14. The strongest design and manufacturing capability planetary mixer manufacturer.
15. China non-standard mixing equipment design research and manufacture center.
16. Obtained ISO9001, ISO14001, ISO45001 system certification.
17. The strongest design and manufacturing capability planetary mixer manufacturer.



强力混合机 CR/CD Intensive Mixer

- 独特混合原理可确保物料100%都参与混合, 在最短的混合时间内获得最佳的产品质量, 用于批量操作。
- 混合装置在高速转动的同时, 筒体由减速机驱动转动, 并且搅拌筒倾斜一定角度, 实现三维搅拌模式, 使物料翻转更剧烈, 混合更均匀。
- 混合方向分顺向和逆向。
- The unique mixing principle can ensure that 100% of the materials are mixed, and the best product quality can be obtained in the shortest mixing time for batch operation.
- While the mixing device is rotating at high speed, the cylinder is driven by the reducer to rotate, and the mixing cylinder is inclined at a certain angle to realize a three-dimensional mixing mode, which makes the material turn more violently and mix more evenly.
- The mixing direction is divided into forward and reverse.



实验室混合机 Laboratory mixer



- CR系列的混合机大小从5升到50升可选;
- 灵活的高性能混合系统;
- 满足不同行业不同物料的制备。
- CR series Intensive mixer sizes from 5 to 50 liters are available.
- Flexible high-performance mixing system.
- The multi-functional mixing system can be used for many different applications.
- CEL系列的混合机大小从1升至10升可选;
- 适用于研究、开发和小规模生产领域;
- 试验结果可按比例进行工业化放大。
- CEL series Intensive mixer sizes from 1 to 10 liters are available.
- For challenging tasks in the fields of research, development and small-scale production.
- Industrial scale-up of test results is possible.

实验中心 Experimental Center

科尼乐实验中心依托20年的行业沉淀, 以客户为中心, 针对不同的工艺步骤, 科尼乐可为客户免费提供不同试验设备, 根据不同客户的原材料进行切合实际的试验。

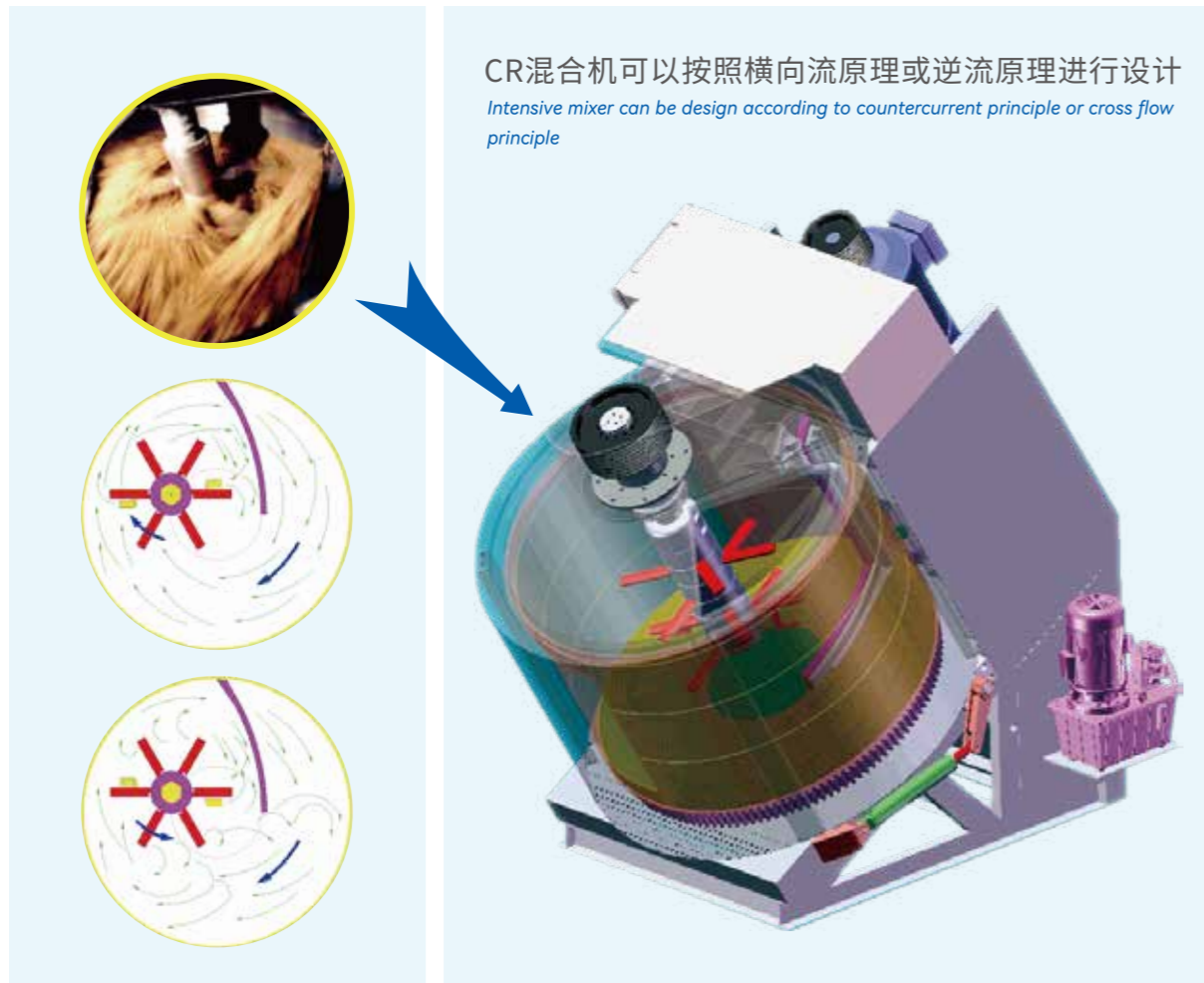
为企业客户提供原材料混合、造粒、纤维化、成型、成品性能检测等一站式服务。

CO-NELE Experimental Center has more than 20 years of experience and provides customers with different testing equipment free of charge for different processes.

Provide corporate customers with one-stop services such as raw material mixing, granulation, fiberization, molding, and finished product performance testing.



引导未来的搅拌原理 *Lead to the future mixing*



CR系列混合机杰出的制备效果通过以下三点得到保证

Intensive mixer can guarantee the following three points

- CR系列混合机使物料槽一起旋转,与此同时,使在离心位置上同方向旋转的搅拌器产生可以剪断物料的力量。在复杂的流动中形成的速度差,实现了物料微小细密的搅拌效果。
- 在旋转的物料槽中,物料被送至刮板臂,在刮板叶片的作用下翻转,促进了上下方向的宏观混合。
- 刮板叶片不断地剥离那些还留在槽底和边缘的物料送至搅拌器,在搅拌周期结束时促进物料在短时间内排出。
- *The mixer can drive the trough move together. At the same time, the mixing device can cut material. In the complex mixing, can get very good mixing effect.*
- *In the turning mixing trough, material be pushed the scraper. Then turn over. That promote the mixing up and down.*
- *Mixing blade can strip the material at the bottom and side of mixer. Can shorten the discharging time.*

混合机技术参数表 *Technical data*

型号 <i>Type</i>	混合量 <i>Mixing volume (L)</i>	卸料方式 <i>Discharging</i>	批次 <i>Batch</i>	加热 <i>Heating</i>
CEL05	1-5	升降式	■	■
CEL10	3-10	升降式	■	■
CR02	1-5	筒体翻转出料	■	■
CR04	3-10	筒体翻转出料	■	■
CR05	8-25	筒体翻转出料	■	■
CR08	16-50	筒体翻转出料	■	■
CR09	33-100	液压中心出料	■	■
CRV09	50-150	液压中心出料	■	■
CR11	80-250	液压中心出料	■	■
CR15M	110-350	液压中心出料	■	■
CR15	160-500	液压中心出料	■	■
CRV15	200-600	液压中心出料	■	■
CR19	250-750	液压中心出料	■	■
CRV19	330-1000	液压中心出料	■	■
CR20	400-1250	液压中心出料	■	■
CR24	500-1500	液压中心出料	■	■
CRV24	650-2000	液压中心出料	■	■
CR29	4500	液压中心卸料	■	■
CRV29	5250	液压中心卸料	■	■

型号 <i>Type</i>	生产率 <i>Productivity (T/H)</i>	卸料方式 <i>Discharging</i>	连续 <i>Continuous</i>	加热 <i>Heating</i>
CRW15	80	伺服液压卸料	■	■
CRW19	100	伺服液压卸料	■	■
CRW20	150	伺服液压卸料	■	■
CRW24	210	伺服液压卸料	■	■
CDW29/4	400	伺服液压卸料	■	■
CDW29/5	500	伺服液压卸料	■	■
CDW29/6	600	伺服液压卸料	■	■

混合造粒机 Granulating & Pelletizing Mixers

- 两步制备过程,混合及造粒只需一台混合机。
- 快速高效的在最短时间内制备出所需的颗粒。
- 使用范围广,满足不同行业、多种物料的混合制粒要求。
- 型号齐全,从小型试验机到大型工业批量生产,均可满足要求。
- *In a two-step preparation process, only one mixer is needed for mixing and granulation.*
- *Quickly and efficiently prepare the required particles in the shortest time.*
- *It has a wide range of uses and meets the mixing and granulating requirements of different industries and various materials.*
- *The models are complete, ranging from small testing machines to large-scale industrial mass production, which can meet the requirements.*



造粒机技术参数表 Technical data

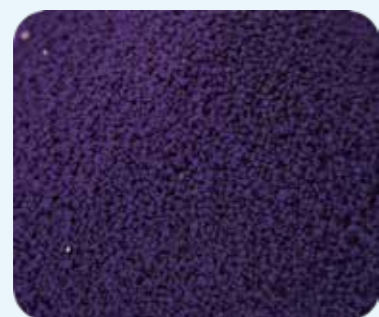
型号 Type	造粒量 Granulation (L)	造粒盘 Pelletizing disc	侧挂板 Paddle	卸料方式 Discharging	批次 Batch
CEL05	2-5	1	1	升降式	■
CEL10	5-10	1	1	升降式	■
CR02	2-5	1	1	筒体翻转出料	■
CR04	5-10	1	1	筒体翻转出料	■
CR05	12-25	1	1	筒体翻转出料	■
CR08	25-50	1	1	液压中心出料	■
CR09	50-100	1	1	液压中心出料	■
CRV09	75-150	1	1	液压中心出料	■
CR11	125-250	1	1	液压中心出料	■
CR15M	175-350	1	1	液压中心出料	■
CR15	250-500	1	1	液压中心出料	■
CRV15	300-600	1	1	液压中心出料	■
CR19	375-750	1	1	液压中心出料	■
CRV19	500-1000	1	1	液压中心出料	■
CR20	625-1250	1	1	液压中心出料	■
CR24	750-1500	1	1	液压中心出料	■
CRV24	1000-2000	1	1	液压中心出料	■



成球率高
粒径大小可调控

High ball forming rate

The particle size can be controlled.



环保
造粒过程全封闭

Environmental friendly

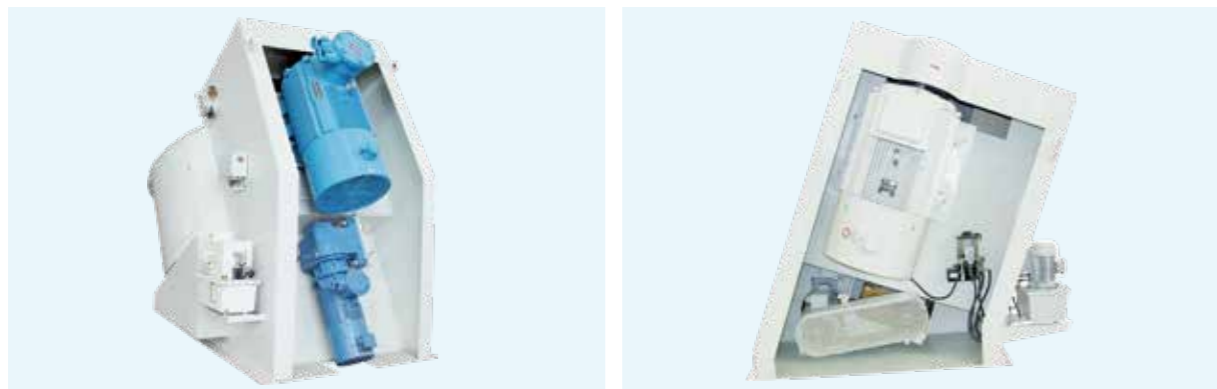
The granulation process is fully enclosed



结构特征 Mechanical features

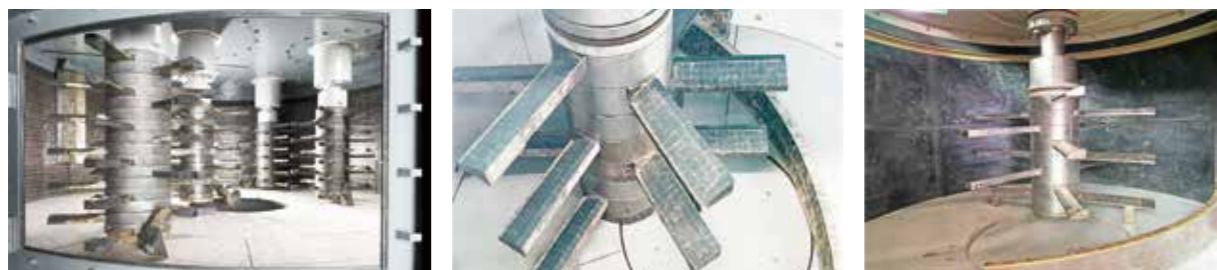
1 传动装置 Gearing system

- 动力需求、转数、旋转方向和能量的传递方式可根据工作任务进行选择;
- 用齿环传动的搅拌筒;
- 通过带有三角皮带的标准马达或三角皮带的标准马达带动齿轮箱驱动的搅拌工具。
- *It can be selected for different demand of power, revolutions, direction of rotation and energy transfer mode according to the task.*
- *Friction gear or ring gear driven mixing drum.*
- *The motor drive the gearbox by vee belt Then the gearbox drive the mixing device.*



2 搅拌装置 Mixing device

- 物料槽一起旋转,与此同时,使在离心位置上同方向旋转的搅拌器产生可以剪断物料的力量,在复杂的流动中形成的速度差。刮板叶片不断地剥离那些还留在槽底和边缘的物料送至搅拌器,实现了物料的最佳均匀性搅拌效果。
- 搅拌桶的底部/壁部装有耐磨合金衬板,转子桨叶和壁部/底部刮刀为硬质合金镀层耐磨保护,磨损小经久耐用而便于维护保养。
- 搅拌叶片便于更换,搅拌叶片的形状和数量根据搅拌物料决定。
- *While the material rotating with the mixing drum, a force generated between the mixing drum and the mixing device that is rotating the same direction in the centrifugal position.*
- *The wolfram carbide compounded liner ensures a durable quality and an easy maintaining.*
- *The shape and quantity of the mixing blade depends on the material to mix. The blades are also easy to replace.*



3 卸料装置 Discharging device

按产品和结构情况进行有针对性的设计。在卸料门上设计有专门的密封装置(专利技术),确保其密封牢靠不漏浆、控制可靠。

Special sealing device is applied to the discharging gate to prevent from leaking.



4 耐磨衬板 Protection against wear

- 搅拌物料对于筒体内接触的结构部件具有磨损、腐蚀性,科尼乐对于这些耐磨件选择有针对性,针对不同搅拌物料。
- 搅拌桶内衬有:耐磨合金衬板、陶瓷衬板、堆焊衬板、不锈钢衬板、硫化橡皮内衬等高分子材质。
- *The stirring materials are abrasion and corrosiveness to the structural parts in the internal contact of the cylinder. Our company has targeted choice of the wear-resistant parts.*
- *The inner lining of the stirring materials and the stirring barrel is: wear-resistant alloy liner, ceramic liner, surfacing liner, stainless steel liner and vulcanized rubber liner with higher molecular material.*



5 检修门 Maintaining door

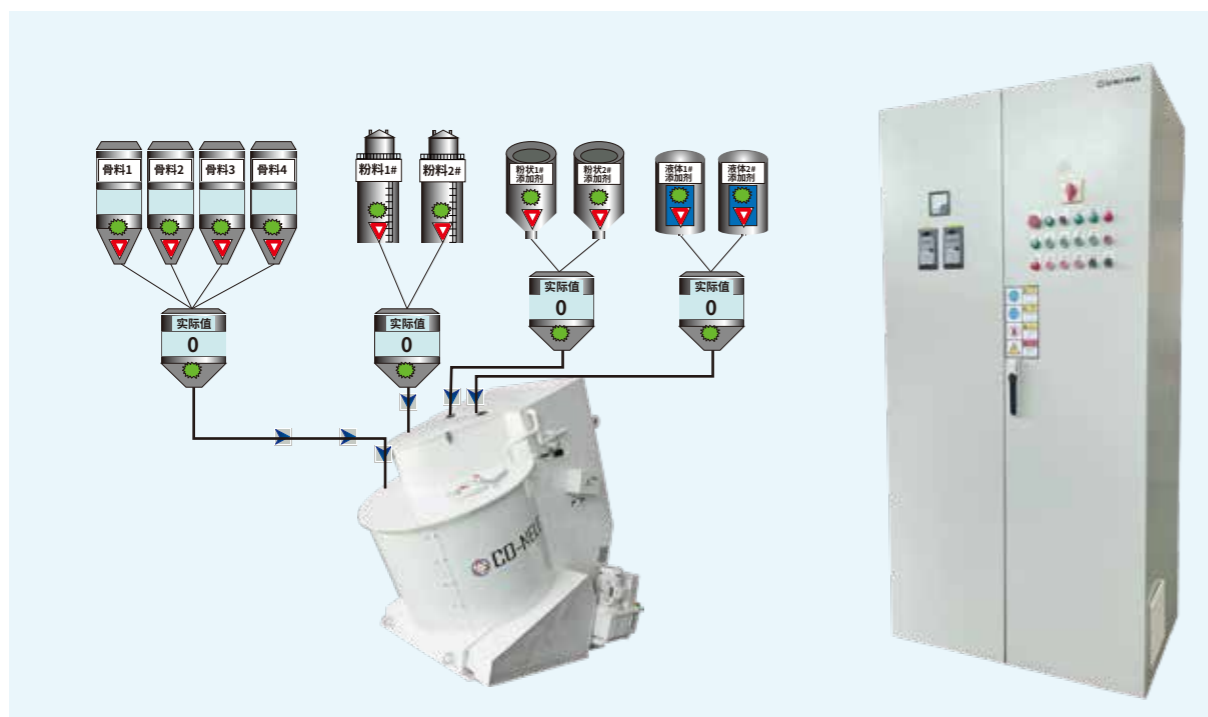
- 根据市场要求,考虑人身安全,检修门上使用了可靠性高,灵敏度高的安全开关,检修时安全、方便。
- 筒盖检修门上设有观察口,可以在搅拌机不断电的状态下观察其正常工作时的搅拌物料的情况。
- *On the consideration of personnel safety and to the market demand, we adopt reliable high-sensitive security switches to be equipped on the maintaining door.*
- *There is an observing port on the maintaining door, observing is possible without cutting off the power.*



选配项 Optional items

<p>真空/加热/制冷 耐磨件衬板/叶片</p> <p>Vacuum/Heating/ Cooling Wear-resistance liner/blade</p>			
<p>硫化橡胶内衬和专用塑料 PTFE,Viton等密封材料 硬质合金涂层、包覆层 高级合金钢、有色金属、陶瓷材料</p> <p>Vulcanized rubber lining and special plastics PTFE, Viton and other sealing materials Carbide coating, cladding High-grade alloy steel, non-ferrous metals, ceramic materials</p>			

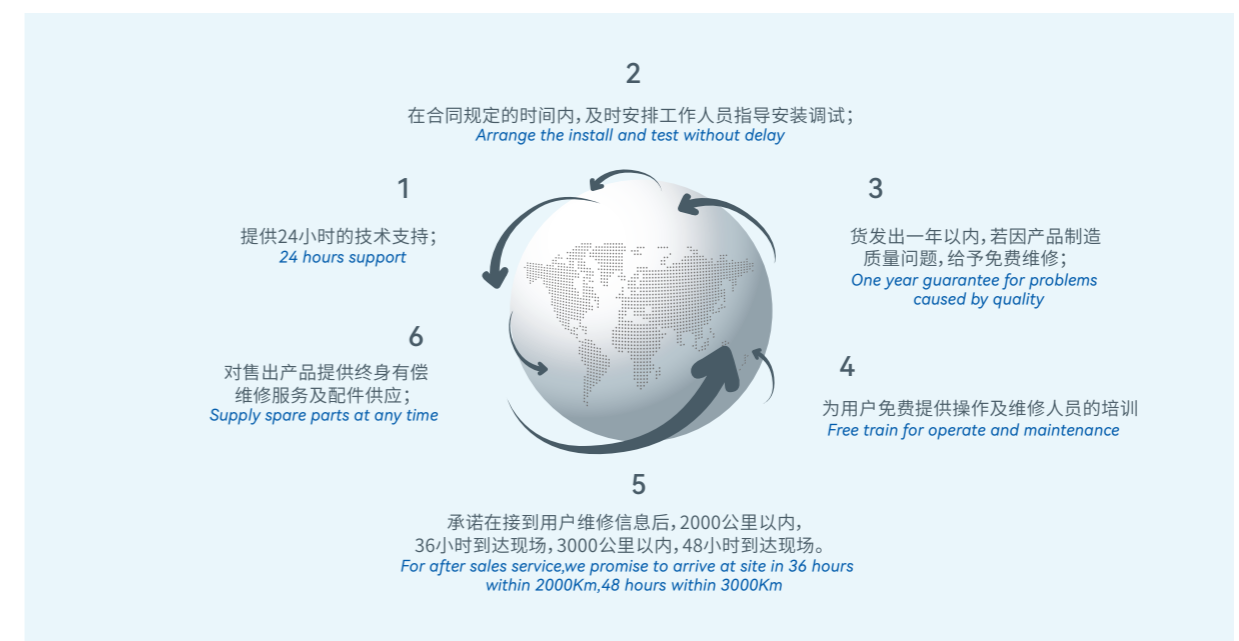
控制系统 Control System



服务系统 Services

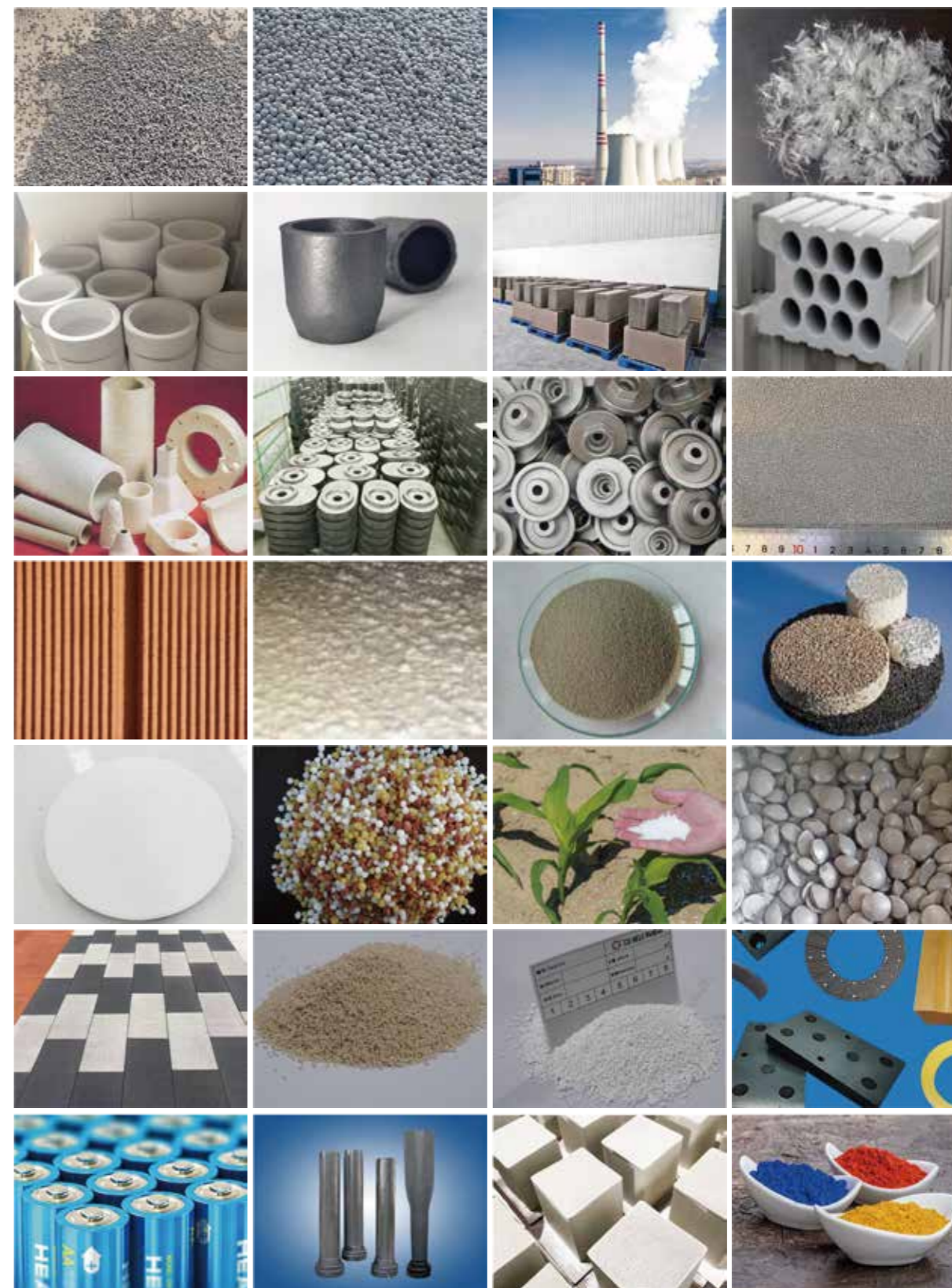
	<p>售前服务 Service before sales</p> <p>担当客户的参谋和助手, 让用户的每一份投资都获得丰厚的回报; <i>Gire advice to customer</i> 设备型号的选择: <i>Assist customer to choose the right model</i> 根据客户的特殊要求, 设计制造产品; <i>Fabricate according to customer's requirement</i> 为客户培训技术人员; <i>Train operators for customer</i> 提供新、特、难等物料搅拌的技术咨询; <i>Technology consulting support for special material mixing</i> 拟定合适的技术方案。 <i>Supply a suitable technical proposal</i></p>
	<p>售中服务 Service in sales</p> <p>代办运输; <i>Transportation</i> 产品的预验收; <i>Inspection</i> 向客户介绍科尼乐的服务体系。 <i>Introduce service system to customers</i></p>
	<p>售后服务 Service after sales</p> <p>协助用户拟定首次施工方案; <i>Assist customer make the construction scheme</i> 设备安装调试; <i>Machine install and test</i> 现场排除故障, 快速主动; <i>Site trouble clearing</i> 提供技术交流的机会; <i>Technical exchange</i> 免费拨打热线 <i>Free hotline: 400-661-6566</i></p>
	<p>增值服务 Value added service</p> <p>重点项目全过程、零距离的技术跟踪服务; <i>Overall process follow-up service</i> 设备定期巡检服务; <i>Regular visit inspect</i> 为客户提供专业的定期保养标准。 <i>Periodic maintenance standard made for customer</i></p>

混合机服务承诺 Service Promise



部分应用行业 Applications

	<p>陶瓷 Ceramics</p>	<p>成型料,分子筛,支撑剂,变阻材料,牙科用料,陶瓷刀具,研磨材料,氧化陶瓷,非氧化物陶瓷、复合材料、硅酸盐科技陶瓷、研磨球,铁氧体等等。 <i>Molding compounds, molecular strainers, proppants, varistor compounds, dental compounds, cutting ceramics, grinding agents, oxide ceramics, Non-oxide ceramics, composite materials, silicate technical ceramics, grinding balls, ferrites, etc.</i></p>
	<p>耐火材料 Refractory</p>	<p>不定型产品、定型产品、预制件、陶瓷纤维的混合物、氧化物和非氧化物陶瓷材料的混合物和颗粒。 <i>Shaped products, Unshaped products, Prefabricated parts, Mixtures and granules for oxide and non-oxide ceramic materials, Mixtures for ceramic fiber materials.</i></p>
	<p>环保 Environmental technology</p>	<p>粉煤灰、灰渣、粉尘/滤尘、污泥、水泥过滤尘, 飞灰, 淤渣/滤饼, 灰尘, 氧化铅、石膏等等。 <i>Fly ash, slag, dust, sludge, cement filter dust, fly ash, slurries, dusts, lead oxide, Phosphogypsum etc.</i></p>
	<p>建材 Concrete</p>	<p>砖块, 膨胀黏土, 珍珠岩等等的多孔介质、耐火陶粒、粘土陶粒、页岩陶粒、陶粒滤料、陶粒砖、陶粒混凝土等。 <i>Porous media of bricks, expanded clay, perlite, etc., refractory ceramsite, clay ceramsite, shale ceramsite, ceramsite filter material, ceramsite brick, ceramsite concrete, etc.</i></p>
	<p>冶金 Metallurgy</p>	<p>锌矿和铅矿, 氧化铝, 金刚砂, 铁矿石、冶金球团制备、金属粉末, 金属结构件等等。 <i>Zinc and lead ore, aluminum oxide, silicon carbide, iron ore, metal powder, metal structural components, etc.</i></p>
	<p>农业化学 Fertilizer</p>	<p>熟石灰, 白云石, 磷肥, 泥炭化肥, 矿物材料, 糖用甜菜种子、化肥、磷肥、炭黑等等。 <i>Agricultural chemistry, Lime hydrate, dolomite, phosphate fertilizer, peat fertilizer, mineral compounds, sugar beet seeds, etc.</i></p>
	<p>玻璃 Glass</p>	<p>玻璃粉, 碳素, 含铅玻璃料、废玻璃渣等等。 <i>Glass powder, carbon, lead glass mixtures, waste glass slag etc.</i></p>
<p>锂电池材料、焊剂、摩擦材料、膨润土、型砂..... <i>Lithium battery material, flux, friction material, bentonite bonded sand</i></p>		



工程案例 Projects



