

Intelligent Driver Console

GUANGZHOU TONGDA AUTO ELECTRIC CO., LTD

Stock code: 603390

01

Company Introduction

02

Driver Console

Company

01

Company Introduction

- Guangzhou Tongda Auto Electric Co., Ltd. Brand name: TONGDA ELECTRIC
- Established in 1994
- IPO: Listed on Shanghai Stock Exchange in Nov.25th 2019, Stock No.: 603390
- High-tech Enterprises
- TONGDA has more than 500 intellectual properties
- TONGDA is a standard supplier for the top 10 bus manufacturers in China



TONGDA Head Quarter
(Baiyun)



1000+

Employees



40%+

Technical Staffs



90%

First and Second Tire Cities
in China



30+

Countries and
Regions



TONGDA Technical Center
(Huangpu)

Timeline

2008

·The main supplier of bus component parts for the 2008 Beijing Olympic Games



1994

·Company founded

2010-2012

·Obtained E-MARK certification.
·Obtained Certification of national high-tech enterprise
·Main supplier of bus component parts for Guangzhou Asian Games, Shanghai World Expo, and Nanjing Youth Olympic Games.

Development

2016-2018

· Invested around 100 million US dollar in construction of Baiyun and Huangpu Tongda Industrial Park

2021-2022

· Headquarter industrial park launches production
· R&D Lab qualified obtained CNAS credential



2019-2020

Listed on Shanghai Stock Exchange, stock code: **603390**
TONGDA Technical Center (Huangpu) Industrial Park completed and started to use

2023



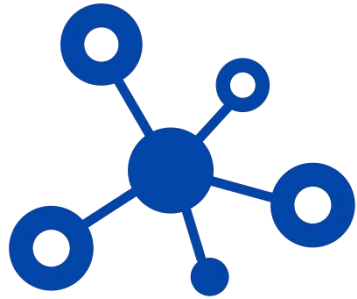
Partners

TONGDA ELECTRIC has **high reputation in public transportation market** and is the **standard** components providers for many bus manufacturers, Offer technical solutions for the partners as well.

 SHENZHEN BUS 深圳巴士集团 深圳巴士集团股份有限公司	 武汉客车制造股份有限公司	 科驰 KECHI 重庆科驰汽车电气有限公司	 思创科技 Gongshu Strong Technology 广州思创科技股份有限公司	 光明公交集团有限责任公司	 汕头公共交通总公司	 漳州交通运输集团有限公司											
 Marcopolo CHINA 广州市公共交通集团有限公司	 广州市公共交通集团有限公司	 中山市公共交通运输集团有限公司	 CHERY 奇瑞万达贵州客车股份有限公司	 ASIASTAR 扬州亚星客车股份有限公司	 YUTONG 郑州宇通客车股份有限公司	 KING LONG 厦门金龙联合汽车工业有限公司	 厦门金龙旅行车有限公司	 Skywell 开沃汽车 开沃新能源汽车集团股份有限公司	 中通客车 中通客车股份有限公司	 CNHTC 中国重汽集团 济南豪沃客车有限公司	 广州市一汽巴士有限公司	 海口公共交通集团有限公司	 东部公交 Shenzhen Eastern Bus Co., Ltd. 深圳市东部公共汽车有限公司				
 西部公汽 WESTERN BUS 深圳市西部公共汽车有限公司	 南宁白马公共交通有限公司	 中兴智能汽车 中兴智能汽车有限公司	 JAC 江淮汽车 安徽江淮客车有限公司	 CHTC 南京恒天领悦汽车有限公司	<h1>PARTNERS</h1>				 海格客车 HIGER 金龙联合汽车工业(苏州)有限公司	 一汽解放 一汽解放汽车有限公司 长春解放客车分公司	 CAMC 华菱星马 安徽华菱星马汽车有限公司	 大连交通集团 大连交通集团有限公司	 VINFAST				
 rapidKL	 JIMO 广州珍宝巴士马集团	 SR 上海公共交通集团有限公司	 AK 安徽安凯汽车股份有限公司	 广西申龙 SUNLONG 广西申龙汽车制造有限公司					 BYD 比亚迪汽车 深圳市比亚迪供应链管理有限公司	 DFAC 东风襄阳客车有限公司	 高鸿股份 大唐高鸿数据网络技术股份有限公司	 武汉市公共交通集团有限责任公司	 SUNLUX 佛山市新协力汽车运输有限公司				
 合肥公交集团 HEBEI BUS GROUP 合肥公交集团有限公司	 珠海巴士 珠海巴士有限公司	 上万源源 上万源源汽车有限公司	 广汽集团 GAC GROUP 广州汽车集团股份有限公司	 申沃客车 SUNWIN 上海申沃客车有限公司					 中国中车 CRRC 中车时代电动汽车股份有限公司 浙江中车电车有限公司	 GEELY 吉利四川商用车有限公司	 AUV 欧辉 北汽福田汽车股份有限公司 北京欧辉客车分公司	 Yinlong 珠海银隆电器有限公司	 广通汽车 Guangtong Auto 珠海广通汽车有限公司	 BONLUCK 百路佳客车 江西凯马百路佳客车有限公司	 飞驰科技 FEICHENG TECHNOLOGY 云浮市飞驰新能源汽车有限公司	 广州新巴士 广州新巴士有限公司	
 杭州公共交通集团有限公司	 慈溪城乡公共交通有限公司	 Zhenjiang 湛江公交集团	 茂名市公共交通总公司	 Nanning 南宁公共交通集团有限公司					 上海久事公共交通集团有限公司	 太原公交 太原公共交通控股(集团)有限公司							

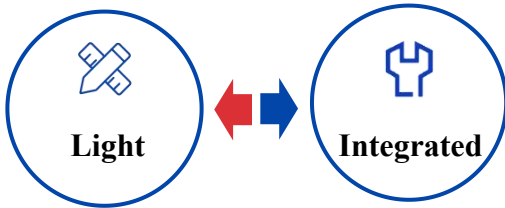
Driver Console

02



Multiple construction

There are **at least 5** screens on vehicles for the drivers, such as reversing monitoring system, 360 system, radar display, tire system, dispatching system, ADAS, smoke alarm and so on. **It is not safe for drivers** to watch so many displays, and these system may have **repeated functions**.



light and integrated design

In addition, the development of vehicle nowadays is based on **light design, intelligent design, information construction design**. An intelligent display with integrated functions is required. The driver console design is becoming **integrated and simple** to use.

The 12.3 inch display could provide all the functions on vehicles.



Monitoring



Tire pressure



Smoke alarm

The buttons for all these functions could be integrated on driver console.

It is not suitable for vehicles to make all these buttons virtualization, **but the product could integrated buttons which are not frequently used like driver light, air conditioner, LED board ON/OFF.**

Product introduction



The X12 is a **12.3 inch smart touch driver console** based on **Linux system**. It has 4G communication, GPS/BD positioning, WiFi and blue tooth. The X12 **integrates vehicle control buttons** like driver lights, air conditioner, LED display etc. The X12 has 4 channels of AHD connectors, with **reversing, rear door, 360, driving records monitoring images**. It employs CAN to connect **gas leakage sensor, tire sensor** and other device to show information on the screen. The X12 could collect real time status of vehicles and show the information to users. X12 could also be used in **expanding public transportation like dispatching service**, and reserve 485 and 232 for following dispatching functions.



Smart control

- The light control, LED board switch, IC card switch and other buttons are integrated
- The buttons could be set in groups for linked control

Smart display

- The display **integrates** monitoring systems include reversing, 360, radar, tire, dispatching, ADAS, smoke alarm.
- Each functions will be showed by tapping different buttons

Smart internet function

- It could be connected with platforms
- The dispatching function could be employed on the products, which could satisfy **intelligent and information** requirements

Smart control

The switch of vehicle channel light, LED display, LCD display, advertising light box and other buttons could be integrated on the driver console screen. The design of interface could be customized based on users requirements. They could set combination of buttons to realize one-button control. The virtual button are suitable for different types of vehicle designs. In this case, it **reduce the cost of vehicle designs** and **satisfy the light design for vehicles**.



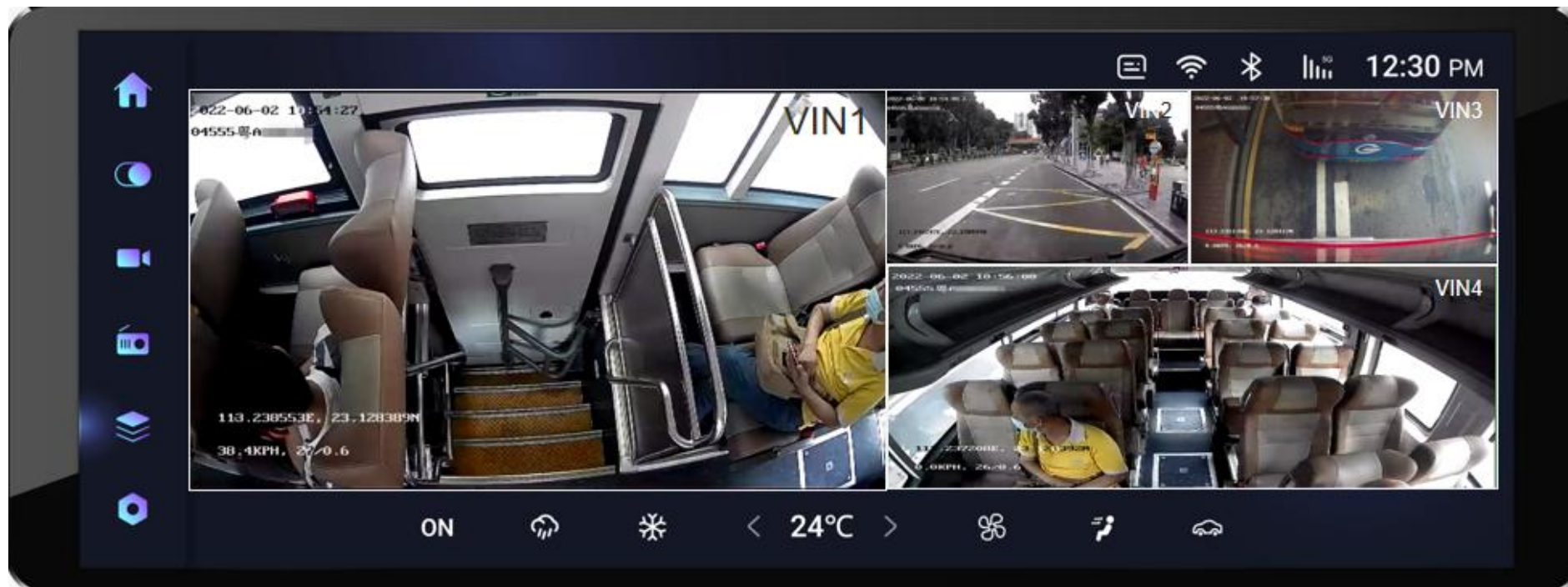
Air conditioner control

The X12 display could send air conditioner control signals by CAN, including ON/OFF, wind, temperature, model selection, circulation mode, error information etc. X12 has internet function, the cloud platform could be used to control the conditioner remotely.



Video monitoring

X12 has 4 channels of 1080P video input. The X12 has video storage, searching and video output. The storage could be 512G in total. The functions like reversing, rear door, 360, driving records and other monitoring images could be integrated in this product. The video functions could be triggered by manually or linked operation: when the reversing or rear door signal received, the relevant windows will be showed automatically. When the signals finished, the windows will be closed. The cold boot could showed the reversing page in 5s maximum.

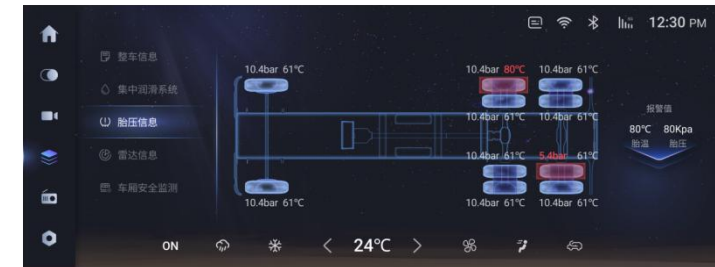


Display setting

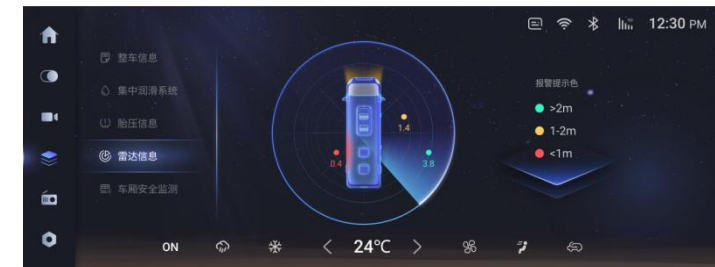
X12 could be connected with flammable gas detect sensor, tire sensor and other device to show information on the screen. The **12.3 inch large screen could show multiple images** in the same page, it is convenient for drivers to check the display and avoid repeat construction of functions. This could satisfy the **all in one design**. The front page could be customized based on users habit, it could simultaneously display 2 or 3 images.



Ordinary interface (3 functions integrated)



Tire monitoring



Radar

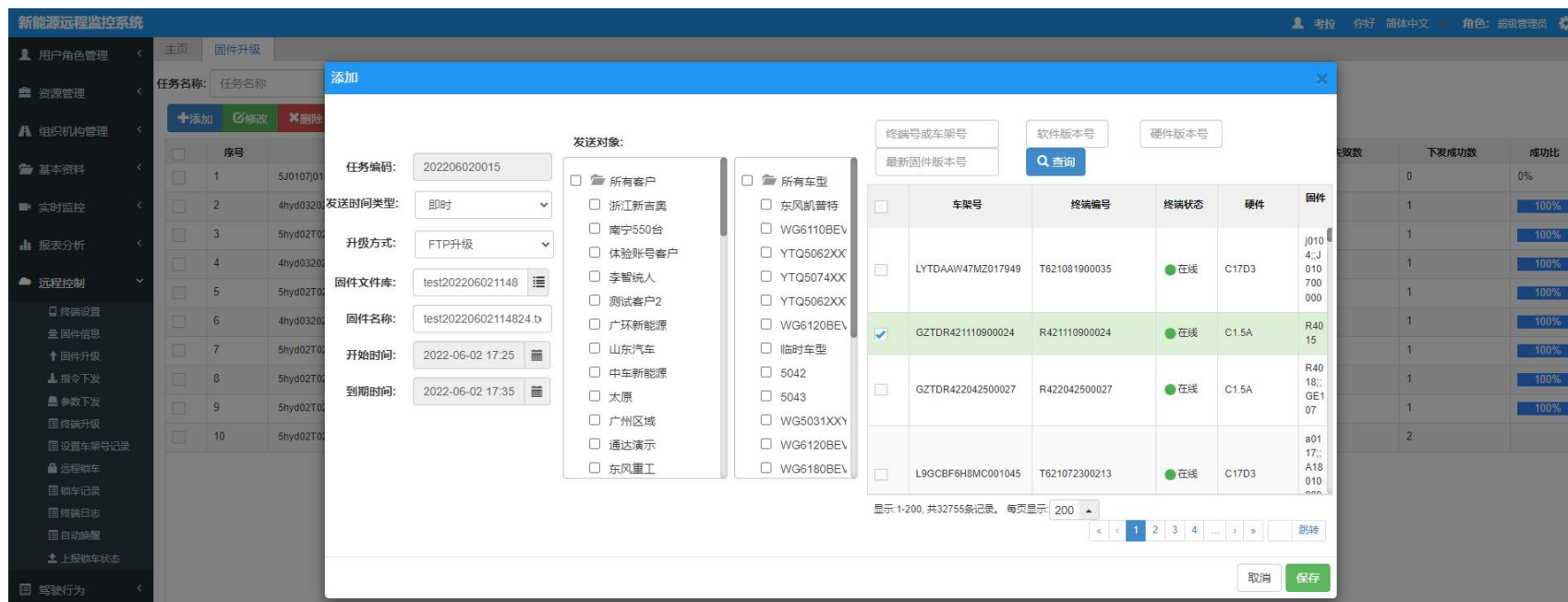
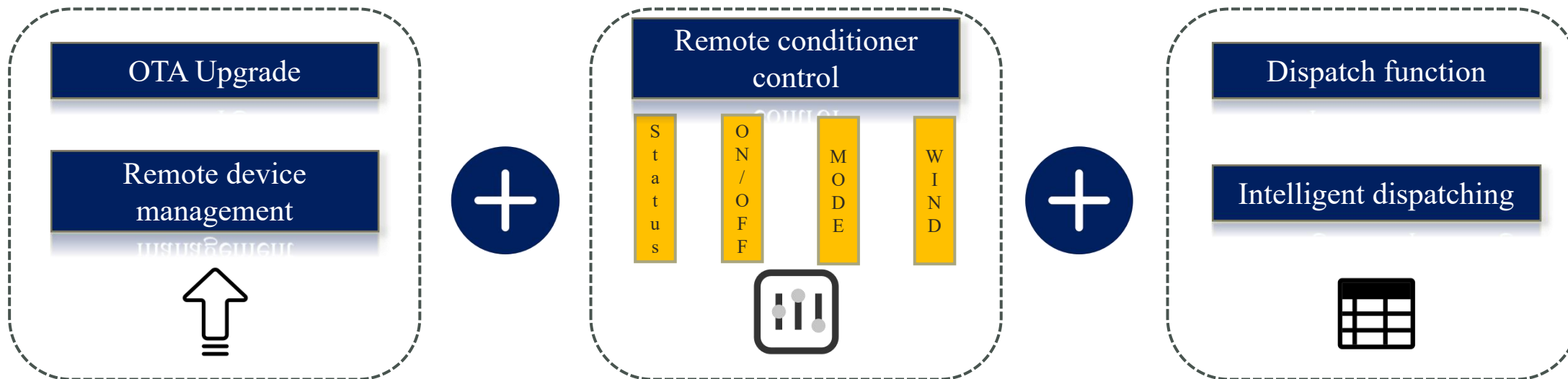
Users could check specific vehicle parts information on vehicle status page, like motor and battery extreme value. The error identification functions could be customized in order to find out the problems immediately.



Alarm information

When the X12 received the alarm signals, the display could provide **pop-up windows and voice announcement** based on customers' setting. The alarm could be set with different levels and strategies. The alarm information could be upload on the cloud platform.





Product specifications

Project		Specifications
System	Linux	Linux4.19
Network	4G/3G	LTE-FDD/LTE-TDD/WCDMA/TD-SCDMA/CDMA/GSM
WIFI	Two channels WiFi	2.4GHz & 5.8GHz two channels
Performance	Quick reversing	Cold boot could provide 5s reversing images
	Cold boot	Cold boot could offer 10s turn on service
Storage	SD Card Storage	MAX 512GB
Display	Size	12.3 Inch
	Resolution	1920*720
	Type	Capacitive touch screen
Connector	Video input	4 Channels 1080P AHD
	Power amplifier output	2 channels power amplifier output, 1 channel output rate 20W@24V. Every single channel is independently control.
	MIC input	MIC input, exterior speaker
	Serial port	2 channels standard 232; 2 channels standard RS485
	CAN	2 channels standard CAN
	SIM	1 channel SIM card connector; eSIM
	Ethernet	1 channel 100M connector
Other	Position	GPS/BD Position
Power	Power input	DC9-32V