

PRODUCT DESCRIPTION



R700

MOBILE TRACK-MOUNTED IMPACT CRUSHER

Inlet opening

710 x 650 mm / 28" x 26"

Performance

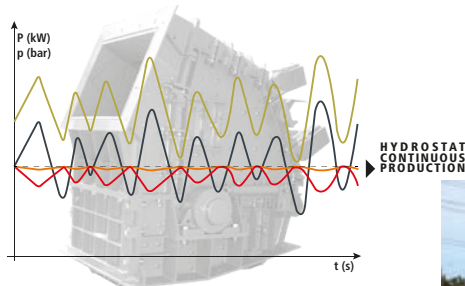
bis zu 150 t/h / 170 st/h*

Weight

19,9 t / 43.900 lbs



Continuous power to the rotor, independent from the engine, for constant crushing performance.



Rockster's hydrostatic drive makes sure that the engine runs in optimum rpm independent from the rotor.



Compact, mobile & easily moved on the construction site. Less down-time.



CONSTANT PERFORMANCE



HYDROSTATIC DRIVE



MAXIMUM FLEXIBILITY



INCREASED MOBILITY



EASE OF OPERATION



LONG-TERM RELIABILITY



Optimal transport dimensions for fast loading and unloading of the crusher.



Quality parts from leading component manufacturers.



Intuitive easy-to-use central machine control unit with a radio remote control.

APPLICATION AREAS



Perfect cubic final grain

COMPACT. FLEXIBLE. POWERFUL.

The mobile **impact crusher R700** is specially developed for applications where space is limited such as for inner-city projects. Because of its optimal dimensions, the R700 is easily transported from one jobsite to another. It is the perfect combination of compactness and maximum performance.

Rockster's mobile track-mounted impact crusher is based on a fully hydraulically concept, which allows flexible recycling of asphalt, concrete and demolition debris.

Besides previously mentioned materials, the R700 is also suitable for precise processing of natural stone.

R700 - your reliable, compact solution for recycling and crushing of:

CONCRETE



Recycled concrete blocks 0/16

C&D WASTE



Subbase road 0/32

ASPHALT



Road 0/32

BRICK



Refilling pipelines 0/64

VIRGIN STONE



Forest road 0/32

CUSTOMER FEEDBACK



"We are so flexible in terms of processing different aggregates and the material we produce with our crusher is of high value. We do also like the fact that the return belt can be turned aside, and we can make another fraction, as well as the fine side belt that can be pulled off. The screen box is also very beneficial as it allows us to produce different material sizes by just switching some screens. "

Arist de Wolff, CEO
Alakona Corp, Hawaii, USA



"At 2,800 m, the Rockster crusher did a very good job in producing optimum final product 0/22mm using a closed circuit crusher with a screen box and return belt."

Richard Grüner GmbH, Austria



SCAN & WATCH



"I was made aware of ROCKSTER's mobile crushers by other companies. For me it is important that the plant is easy to transport and still very powerful. Since our jobs often need to be done in a confined spaces and especially in road construction in steep terrain, the crusher must not be too big and heavy."

Christoph Wagner, Founder and CEO
Wagner Erdbau, Austria



SCAN & READ

MAIN DIMENSIONS

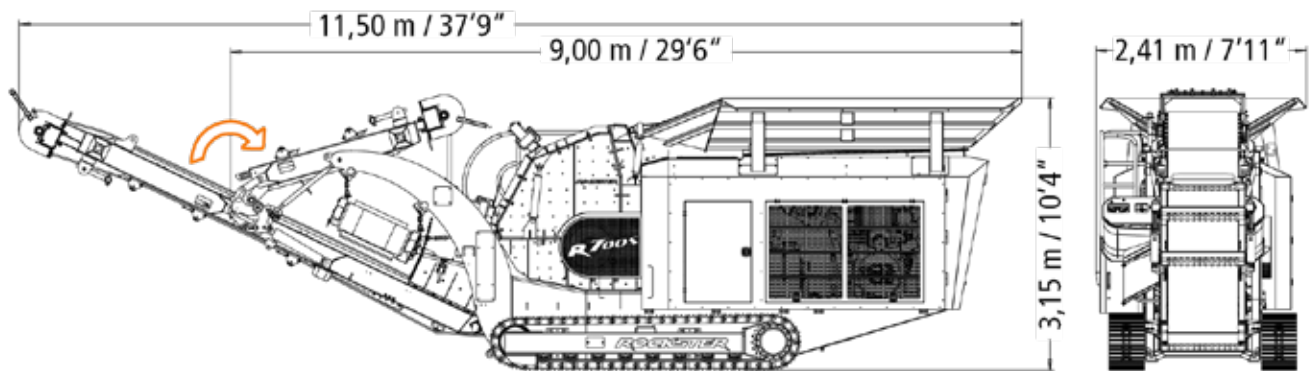


Transport dimensions

Length:	29'6" / 9,00 m
Width:	7'11" / 2,41 m
Height:	10'2" / 3,10 m
Height folded main belt:	10'4" / 3,15 m
Transport weight:	43.900 lbs / 19,9 t

Feeding & discharge height

Feeding height:	10'2" / 3,10 m
Main discharge belt:	~ 9'10" / 3,00 m
Side discharge belt:	~ 7'3" / 2,20 m



Technical details

Inlet opening:	28" x 26" / 710 x 650 mm
Impact circle diameter:	37" / 930 mm
Rotor equipment:	4 blow bars
Crushing ration:	1:10 - 1:50
Performance:	up to 170 st/h / 150 t/h
Rotor speed (continuously adjustable):	up to 850 rpm
Weight:	ca. 13,150 lbs / 5.950 kg
Drive:	hydrostatic
Gap adjustment (adjusted on display):	fully hydraulic
Dust suppression:	At the crusher inlet & outlet



1. Maximum flexibility for top performance

The Rockster impact crusher guarantees the highest performance with a very high crushing rate. With two hydraulically fully adjustable aprons working independently from one another, as well as the option to variably adjust the crusher speed, the size of the final product can be highly optimised.

2. Individual adjustment of the degree of hardness

Depending on the material being processed, the hardness of the blow bars can be individually selected. This ensures optimal performance in various working conditions.

3. Use of the blow bars on both sides

The Rockster impact crusher's blow bars can be used on both sides, which extends the life of the wearing parts and at the same time reduces maintenance intervals.

4. High quality wear materials

Rockster uses only high-quality wear materials. This not only ensures low wear, but also ensures a reduction in daily operating costs.

Drive

Engine (electronically regulated):	Volvo Tier 3a / Stage IIIA - 160 kW / ~220 HP
	Volvo Tier 4 Final / Stage IV - 160 kW / ~220 HP
	Volvo Stage V - 160 kW / ~220 HP
Cylinder:	6
Cooling system:	water

The drive system is located at the rear of the machine, enclosed in a sound-proofed housing. Engine openings are positioned on all sides for easy access, service and overall maintenance.

The hydraulic pump for all auxiliary drives (main discharge belt, side discharge belt, vibration chute, crawler gear...) as well as the pump for the hydrostat are driven via a distributing gear unit which is flange-mounted on the drive engine. The hydrostat activates the crusher via a V-belt drive.



ADVANTAGES OF THE HYDROSTATIC DRIVE

- > Elimination of conventional clutch. No wear.
- > Individual adjustment of crusher speed
- > Crusher overload protection
- > Power adjustment according to individual requirements
- > Uniform throughput
- > Enormous power reserves

Feed hopper

Material:	Hardox 400
Volume:	4.2 yd ³ / 3,2 m ³
Length:	11' / 3350 mm
Width:	6'11" / 2100 mm
Height:	10'2" / 3100 mm



Vibration chute with pre-screening

Material:	Hardox 450
Length:	43" / 1100 mm
Width:	36" / 900 mm
Type:	Zig zag
Option:	bar screen
Drive:	hydraulic - continuously adjustable



Bypass

The switchable chute (Bypass) enables the discharge of pre-screened material on the side or onto the main discharge belt.

Easy switch via hand lever.

No special assembly necessary.

No wear. No service.



Main discharge belt

Belt width:	32" / 800 mm
Discharge height:	~ 9'10" / 3,00 m
Angle:	25,5°
Drive:	hydraulic, continuously variable

The main discharge belt is hydraulically foldable for transport purposes.



Side discharge belt

Belt width:	16" / 400 mm
Discharge height:	~ 7'3" / 2,20 m
Angle:	21°
Drive:	hydraulic

The side discharge belt is hydraulically foldable for transport purposes.



Magnetic separator

Type:	Permanent magnet
Belt width:	30" / 750 mm
Weight:	1940 lbs / 880 kg
Drive:	hydraulic



Caterpillar crawler

Tread width:	16" / 400 mm - slanted
Wheel base:	9'6" / 2900 mm
Surface:	triple ribbed pads
Drive:	2-speed hydraulic



Control panel

Central control/operating unit ensures an easy operation and machine monitoring in connection with a wireless remote control.

Fully automatic engine Start-Stop system with only one button.

- › Save the operation settings for various applications
- › Error monitoring - error log
- › Input & output status
- › Fast start of operation (QUICKSTART-Function)



EASY MAINTENANCE



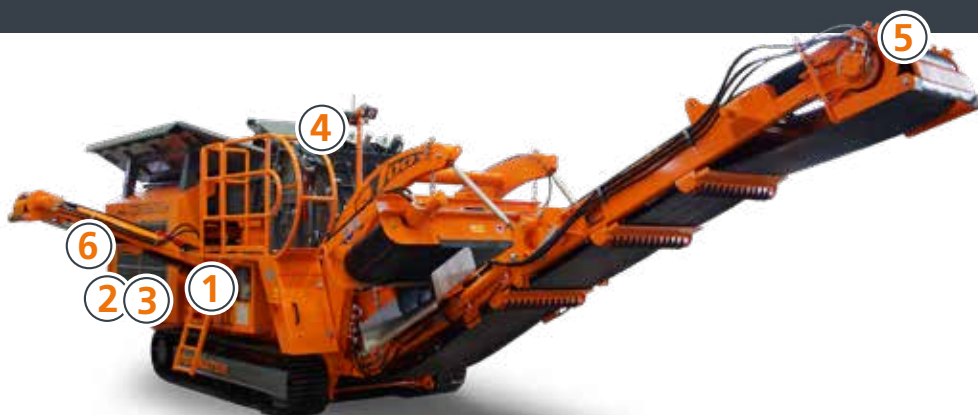
Ideal accessibility



Large covers enable optimal accessibility when it comes to service and maintenance. Furthermore they ensure optimal ventilation of the drive-unit and the cooler. It makes it a dream for every service technician when it comes to service and maintenance.



OPTIONS



Central lubrication system



Belt weigh scale incl. printer



Air compressor



Water pump



Blow-bar change system



Dust suppression

OPTIONS - SCREENING SYSTEM



Defined final product

Compact circular vibrating screen RS73.

Double-functional return or stockpile belt RB65.

Perfect addition for the production of 100 % defined final product.

In addition, the return belt can be used as a stockpile belt, which enables the production of the second product.



Vibrating screen

Screen size:	6' x 3'3" / 1830 x 1000 mm
Standard mesh:	1 1/2" / 38 mm

Special screens available on demand



Discharge conveyor - fines

Belt width:	32" / 800 mm
Discharge height:	~ 9'6" / 2,90 m



Discharge conveyor - oversize grain

Belt width:	16" / 400 mm
-------------	--------------

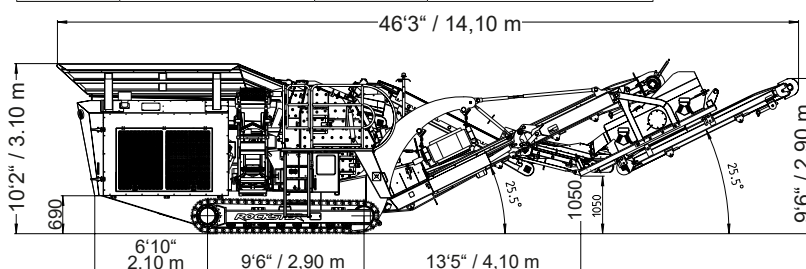


RB65 return or stockpile belt

Belt width:	16" / 400 mm
Discharge height:	~ 11'2" / 3,4 m

Transport dimensions R700 + RS73 + RB65

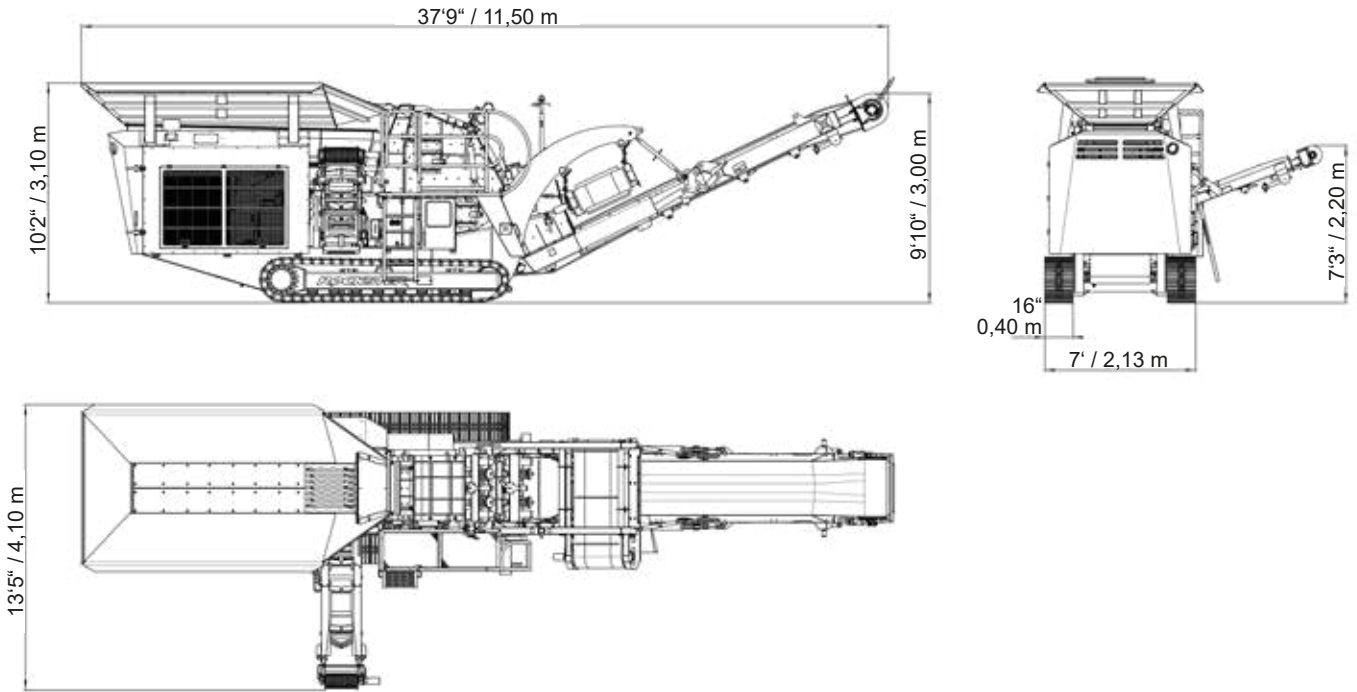
Length:	46'3" / 14,10 m	Width:	8'3" / 2,52 m
Height:	10'2" / 3,10 m	Weight:	50,300 lbs / 22,80 t



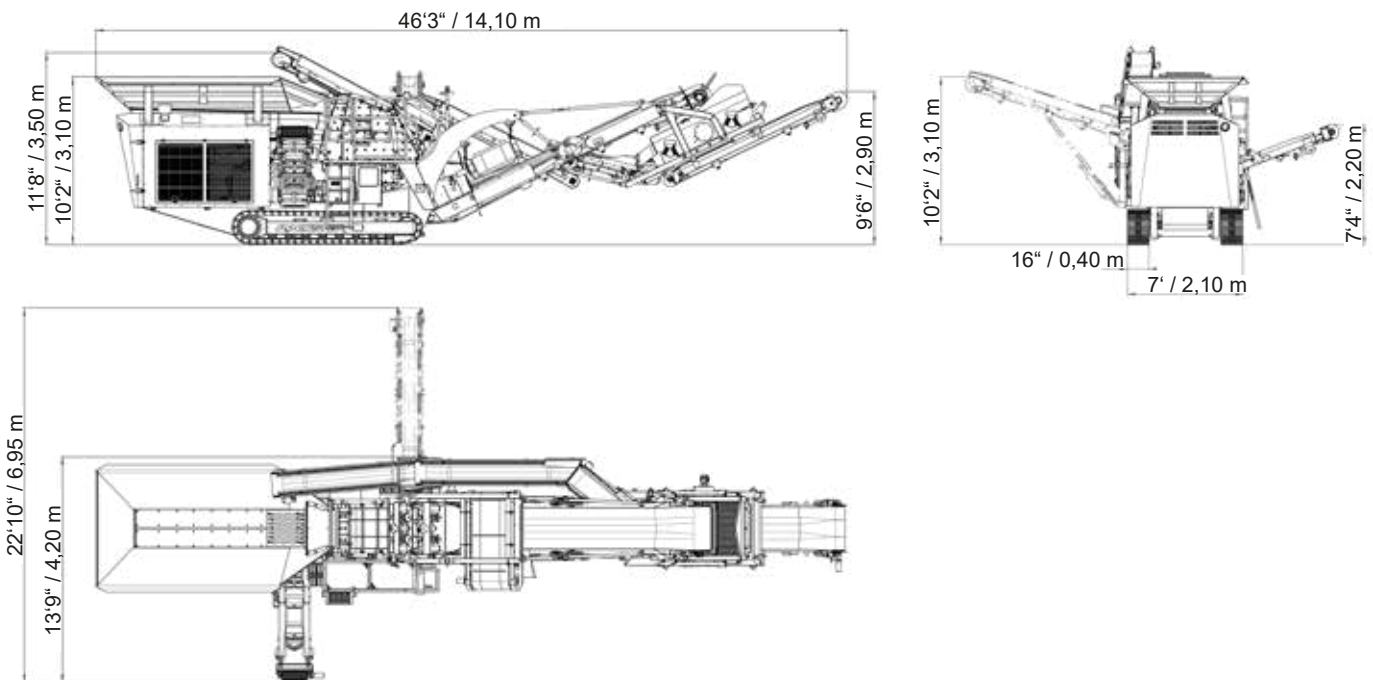
WORKING DIMENSIONS



R700S



R700S with screening system



GENERAL INFORMATION



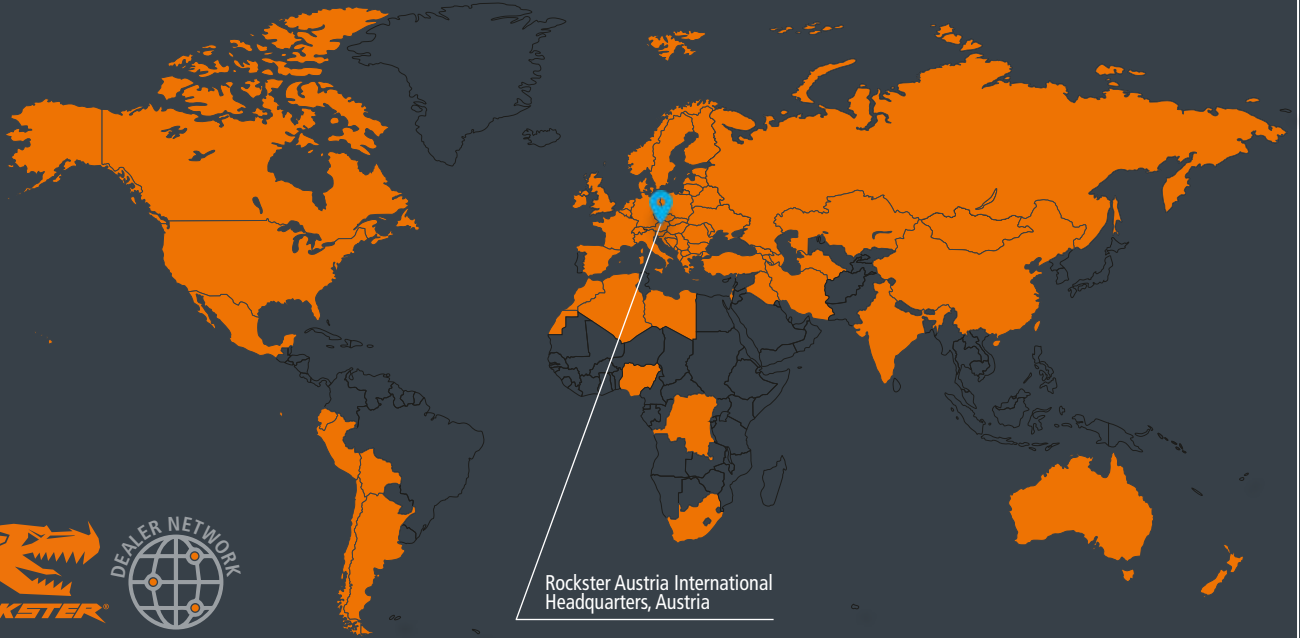
Austrian based manufacturer Rockster Austria International GmbH has a longstanding reputation and the know-how in demolition and screening industry.

The product line includes, among others, track mounted impact and jaw crushers, screening machinery and tracked stackers. "Our mobile crushers and screeners are used for profitable & economical recycling and processing of asphalt, concrete and construction waste, as well as for natural stone.

With innovations like The Original DUPLEX system or double-functional return belt, we repeatedly demonstrate our progressive approach towards improving and developing more efficient recycling & processing methods."

Rockster machines are sold in more than 50 countries worldwide. Our sales partner network guarantees the ideal on-site package of product and service in order to support and secure the daily success of our customers.





Rockster Austria International
Headquarters, Austria

SOLD IN MORE THAN 50 COUNTRIES WORLDWIDE

**COMPETENCE.
PROGRESS.
PARTNERSHIP.**

Rockster Austria International GmbH | Matzelsdorf 72, 4212 Neumarkt i.M., Austria
Tel.: +43 720 70 1212 | office@rockster.at | www.rockster.at

