

● MF5100 系列简介 Brief introduction of MF5100 series

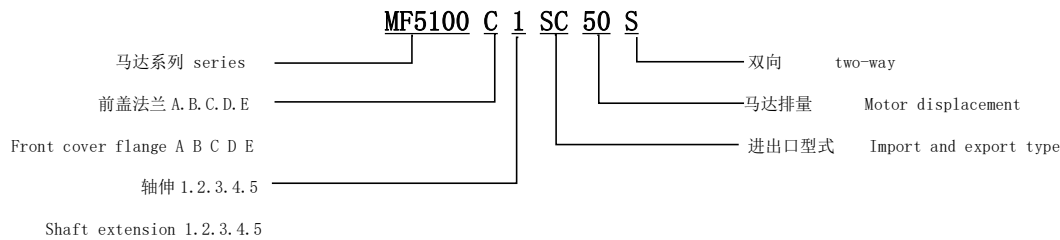
MF5100 系列齿轮马达排量从 25 至 80ml/r, 最高压力可达 25MPa, 特有的二次密封结构能有效地提高马达的性能, 侧板结构先进, 表面涂层处理, 耐压抗磨性强, 扭矩输出稳定。

The displacement of the MF5100 series gear motor ranges from 25 to 80ml/r, with a maximum pressure of up to 25MPa. The unique secondary sealing structure can effectively improve the performance of the motor. The side plate structure is advanced, with surface coating treatment, strong pressure and wear resistance, and stable torque output.

● 性能参数 Specifications

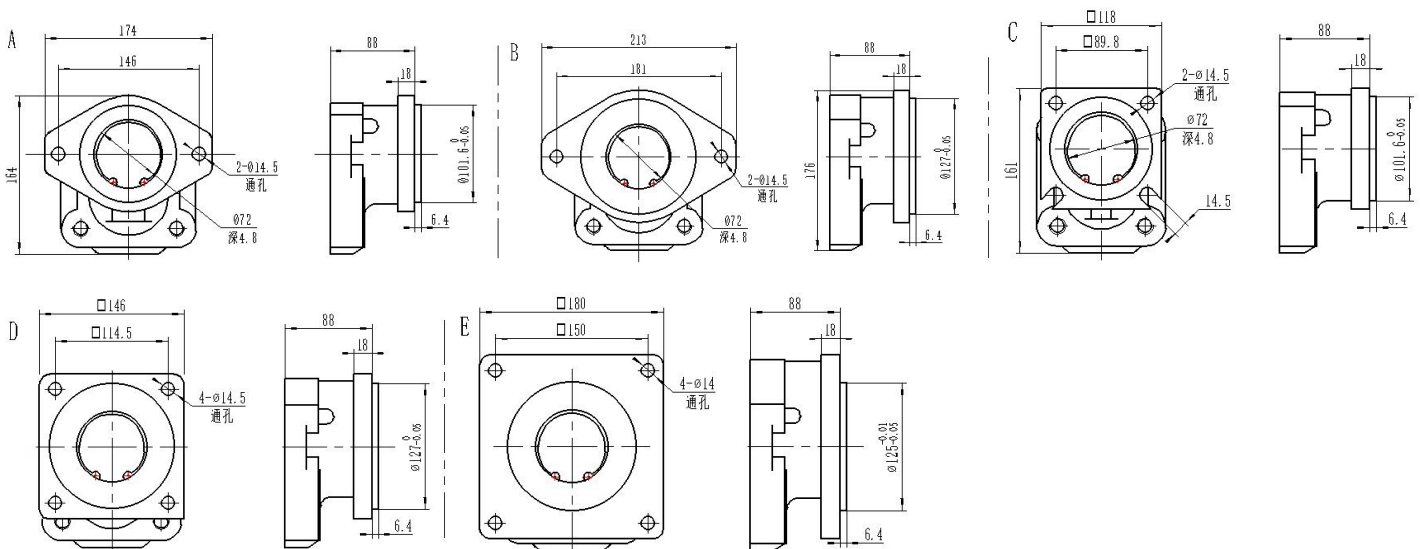
| displacement 排量 | Input Flow 输入流量 2000RPM | Shell E 壳体 E | Rated Pressure 额定压力 | Max Pressure 最高压力 | Output Speed RPM 输出转速 转/分 | | Output Power 2000 RPM 输出功率 | Output Torque 输出扭矩 |
|--------------------|-------------------------------|-----------------|------------------------|----------------------|------------------------------------|-----------|----------------------------------|-----------------------|
| | | | | | Max 最高 | Min 最低 | | |
| ml/rev | LPM | mm | MPa | MPa | | | KW | N.m |
| 25 | 46.9 | 35 | 21 | 25 | 2200 | 600 | 14.7 | 63.4 |
| 32 | 70.2 | 39 | 21 | 25 | 2200 | 600 | 19.9 | 95.1 |
| 40 | 93.8 | 43 | 21 | 25 | 2200 | 600 | 26.6 | 126.9 |
| 50 | 117.1 | 49 | 21 | 25 | 2200 | 600 | 33.2 | 158.4 |
| 63 | 140.4 | 56 | 21 | 25 | 2200 | 600 | 39.8 | 190.0 |
| 80 | 187.3 | 66 | 21 | 25 | 2200 | 600 | 52.6 | 253.4 |

● 型号说明 Model coding

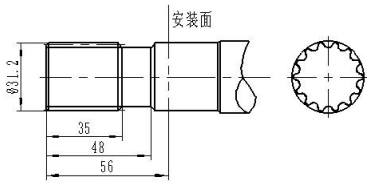


● 尺寸数据 (mm/in) Dimensional Data(mm/in)

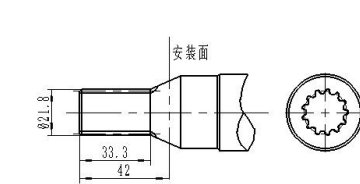
● 前盖法兰 Front cover flange



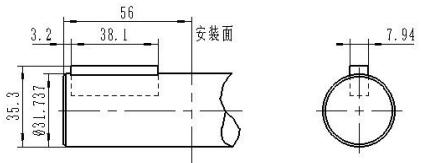
● 轴伸 Drive shafts



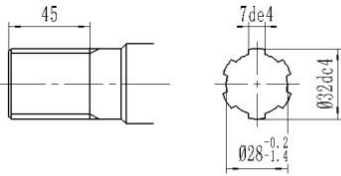
轴伸形式 1: DRIVE SHAFT 1:
SAE C 14 齿渐开线外花 SPLINED SAE C(14TEETH)



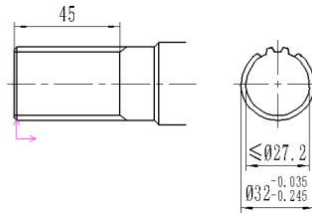
轴伸形式 2: DRIVE SHAFT 2:
SAE B 13 齿渐开线外花键 SPLINED SAE B(13TEETH)



轴伸形式 3: DRIVE SHAFT 3:
SAE C 平键 KEYED SAE C
键: 5/16"(W) X 15/32"(H) X 1-1/2"(L) KEY:5/16"(W) X 15/32"(H) X 1-1/2"(L)



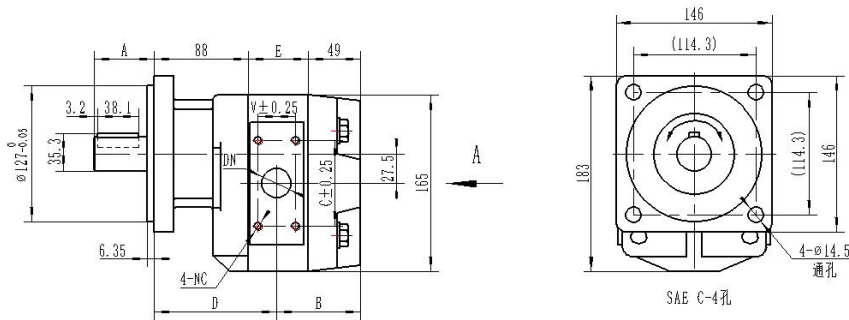
轴伸形式 4: DRIVE SHAFT4:



轴伸形式 5: DRIVE SHAFT5:

| 渐开线花键参数 Parameters of involute spline | |
|--|-----|
| 模数Modulus | 2 |
| 齿数No. of tooth | 15 |
| 分度圆直径Pitch dia | 30 |
| 压力角Pressure angle | 30° |

● 外形安装联接尺寸 Outline Dimensions



A. SAE "C" shaft shown, other shafts available.

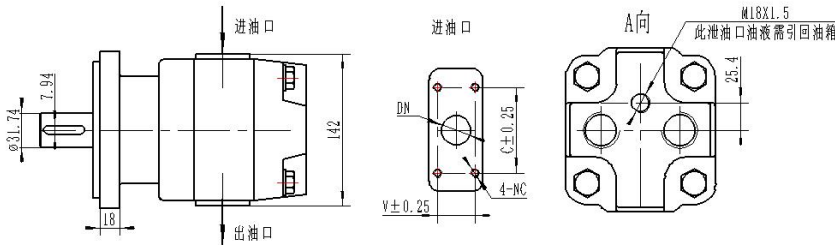
图示为 SAE "C" 轴伸, 轴伸形式有多种选择。

B. 49 plus half the width of the shell
49+壳体宽度/2

D. 88 plus half the width of the shell
88+壳体宽度/2

E. width of the shell

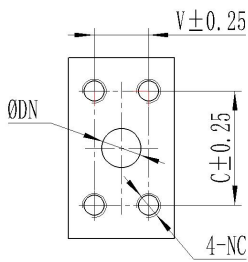
壳体宽度



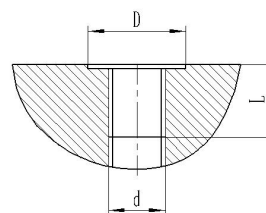
● 油口尺寸 Oil Port Type

油口 1. 英制法兰油口 SPLIT FLANGE PORT (ISO6162)

油口 2. 英制管螺纹油口 BSPP PORT (GB/T7306)



| DN | C | V | NC | ET |
|--------|------|------|------------|----|
| 1/2" | 38.1 | 17.5 | 5/16-18UNC | SA |
| 3/4" | 47.6 | 22.3 | 3/8-16UNC | SB |
| 1" | 52.4 | 26.2 | 3/8-16UNC | SC |
| 1-1/4" | 58.7 | 30.2 | 7/16-14UNC | SD |
| 1-1/2" | 69.9 | 35.7 | 1/2-13UNC | SE |
| 2" | 77.8 | 42.9 | 1/2-13UNC | SF |
| 2-1/4" | 88.9 | 50.8 | 1/2-13UNC | SG |



| d | D | L | ET |
|---------|-----|----|----|
| G1/4" | Φ26 | 12 | BA |
| G3/8" | Φ30 | 12 | BB |
| G1/2" | Φ35 | 14 | BC |
| G3/4" | Φ42 | 16 | BD |
| G7/8" | Φ44 | 19 | BE |
| G1" | Φ50 | 18 | BF |
| G1-1/4" | Φ58 | 20 | BG |
| G1-1/2" | Φ64 | 22 | BH |
| G2" | Φ78 | 24 | BK |

● 安装注意事项 Installation precautions

1、安装马达时，轴应缓慢导入，切勿强行敲入。

1. When installing the motor, the shaft should be slowly introduced and not forcefully knocked in.

2、马达传动轴与动力输出轴之间应采用挠性联轴节联接，
其不同轴度不大于 0.1mm。

2. Flexible couplings should be used to connect the motor transmission shaft and power output shaft,
its different axial degrees shall not exceed 0.1mm.

3、马达泄油口的背压不得大于 0.4MPa。

3. The back pressure of the motor oil outlet should not exceed 0.4MPa.