



# 科技机械 · 时代用具

SCIENCE & TECHNOLOGY MACHINERY, TOOLS OF THE TIMES

混凝土激光整平机/路面机械/工程机械/农业机械  
Concrete Laser Screed Machine/Concrete Ground Polisher  
Pavement Construction Machinery  
Project Machinery/ Agricultural Machinery



关注公司微信公众号  
了解更多活动信息



打开抖音扫描二维码  
了解设备如何操作使用

山东华昂工程设备有限公司  
SHANDONG HUA ANG ENGINEERING EQUIPMENT CO., LTD.

电话: 400-0537-255

网址: www.sdhuang.com

地址: 山东省济宁市高新区山博路

2024.8

山东华昂工程设备有限公司  
SHANDONG HUA ANG ENGINEERING EQUIPMENT CO., LTD.



科技机械时代用具  
SCIENCE & TECHNOLOGY MACHINERY, TOOLS OF THE TIMES

# Contents

## 目录

■ 企业简介 Company profile	1
■ 企业文化、资质证书 Corporate culture, qualification certificate	3
■ HA100-2 手扶式激光整平机 HA100-2 Walking laser leveling machine	7
■ HA100-2L 显示屏款激光整平机 HA100-2L Display type laser leveling machine	9
■ HA100-4A 后座款激光整平机 HA100-4A Rear seat laser leveling machine	11
■ HA100-4D 方向盘款激光整平机 HA100-4D Steering wheel laser leveling machine	13
■ HA100-4L 全液压款激光整平机 HA100-4L Full hydraulic laser leveling machine	15
■ HA200-4 MINI 伸缩臂激光整平机 HA200-4 MINI telescopic boom Laser leveling machine	17
■ HA200-4 中型伸缩臂激光整平机 HA200-4 Medium telescopic boom Laser leveling machine	19
■ HA200-4L 大型伸缩臂激光整平机 HA200-4L Large telescopic boom Laser leveling machine	21
■ HA150-4 MINI 撒料机 HA150-4 MINI Topping spreader	23
■ 座驾抹光机 Seat polishing machine	25
■ 切缝机 Slicing machine	27







企业先后被评为中国315诚信企业、中国工业先锋示范单位、AAA级重合同守信用企业、山东省高新技术企业、山东省青年企业、十佳诚信企业、济宁市优秀企业等一系列殊荣,彰显了华昂公司作为行业领跑者的综合实力。

The company has received numerous accolades, including recognition as a "China 315 Honest Enterprise," "China Industrial Pioneer Demonstration Unit," "AAA Level Contract-Keeping Enterprise," "Shandong High-Tech Enterprise," "Shandong Youth Enterprise," "Top Ten Honest Enterprise," and "Jining Excellent Enterprise," among others. These honors reflect the comprehensive strength of Huaang Company as a leader in the industry.



SHANDONG HUAANG ENGINEERING EQUIPMENT CO., LTD

# COMPANY PROFILE

## 企业简介

山东华昂工程设备有限公司位于山东济宁高新区山博路,主要经营混凝土激光整平机。华昂公司集研发、生产、销售、售后、服务为一体,公司拥有专业的研发团队,专业技工100余人。激光整平机已连续三年国内销量首位,同时远销东南亚、中东、欧洲、俄罗斯等地区,目前公司已有20多项专利证书,并先后通过了ISO9001质量体系认证、欧盟CE认证等多项认证。

Shandong Huaang Engineering Equipment Co., Ltd. is located in the Shandong Jining High-Tech Zone on Shanbo Road. The company primarily specializes in the research, development, production, sales, and after-sales service of concrete laser leveling machines. Huaang has established a professional R&D team and employs over 100 skilled technicians. For three consecutive years, the laser leveling machine has ranked as the top seller in the domestic market and has been exported to Southeast Asia, the Middle East, Europe, Russia, and various other regions. The company holds more than 20 patent certificates and has successfully passed ISO 9001 quality system certification, as well as EU CE and other certifications.







SHANDONG HUAANG ENGINEERING EQUIPMENT CO., LTD  
**CORPORATE CULTURE**  
**企业文化**  
 >>>

**正心修身平天下 >>**

- ★ 企业精神: 风华正茂 昂首未来
- ★ 经营理念: 近者悦 远者来
- ★ 经营使命: 让每一个地坪人都省心
- ★ 核心价值观: 不骗人, 不暴利, 真实力

CULTIVATE ONE'S BODY AND SMOOTH THE WORLD >>

Enterprise spirit: youth and head high for the future Business philosophy: The near and the far come  
 Business mission: Let every floor people worry Core values: no cheating, no profiteering, real strength

**华昂机械与人机工程学 >>**

★ 人机学是把操作机器的人、机器设备或仪器仪表和操作环境作为一个系统, 运用机械学、生理学、心理学和其他有关的科学技术知识, 使系统中的以上几种要素互相协调。目的是保证机器使用者的身心健康, 使操作方便、省力、准确、持久、提高工作效率。

★ 华昂机械, 采用人体工程学原理, 致力于为地坪人创造低成本、高质量、更易操作的整平机械。

HUAANG MACHINERY AND ERGONOMICS >>

Ergonomics is to operate the machine, machine equipment or instruments and operating environment as a system, the use of mechanics, physiology, psychology and other related scientific and technological knowledge, so that the system in the above elements of coordination. The purpose is to ensure the physical and mental health of the machine users, so that the operation is convenient, labor-saving, accurate, durable, and improve work efficiency.  
 Hua Ang Machinery, using ergonomic principles, is committed to creating low cost, high quality, easy to operate leveling machinery for people.



采用“人机工程学”原理,  
推出定制化技术服务, 好操作, 更省心;



"SEVEN HEARTS" COOPERATE WITH HUAANG CUSTOMIZED TECHNOLOGY SERVICES

Careful: selected imported brand accessories, precise elevation control, sincere service, efficient operation, small error;  
 Heart: from research and development, production, sales and after-sales service, because of heart, so professional;  
 Save worry: adopt the principle of "ergonomics", launch customized technical services, easy operation, more worry;  
 Peace of mind: "people-oriented, risk pre-control, closed-loop management, continuous improvement" safety management system, let the family peace of mind;  
 Rest assured: with 7\*24 all-weather technology and after-sales service guarantee system, tracking service, let the floor more assured;  
 Careful: strict quality control on products, quality assurance customer satisfaction;  
 Heart cultivation: professional attitude, forge ahead, improve the team culture and technical service level.

**质量方针**

科学管理、精益求精、  
客户满意、持续改进。

QUALITY POLICY

Scientific management,  
excellence,  
Customer satisfaction and  
continuous improvement.

**品质三要**

要下定决心、  
要教育训练、要贯彻执行

QUALITY ELEMENT

Make up your mind,  
Education and training  
should be carried out

**品质政策**

全员品管、交期准时、  
持续改善、客户满意。

QUALITY POLICY

Quality control of all staff,  
delivery on time,  
Continuous improvement and  
customer satisfaction.





SHANDONG HUAANG ENGINEERING EQUIPMENT CO., LTD

# CERTIFICATE 资质证书

依托技术优势,从研发到生产,华昂公司将追求完美的态度贯穿在每一个环节,不断进行产品升级,成就产品超高品质;公司严格注重人机工程设计,不断向智能化激光整平控制技术跨越,发展势头猛进,产品以其安全可靠、操作灵便、智能高效的特点,屹立于行业前沿。

目前,公司已拥有技术专利10余项,并先后通过了(ISO9001质量管理体系认证)等多项认证。企业先后被评为中国315诚信企业、山东省地坪行业协会会员、十佳诚信企业、济宁市优秀企业等一系列殊荣,彰显了华昂公司作为行业领跑者的综合实力。

Relying on technical advantages, from R&D to production, Huaang Company will pursue the perfect attitude throughout every link, constantly upgrading products, and achieving super high quality products; The company strictly pays attention to ergonomic design, constantly leaps to intelligent laser leveling control technology, and develops rapidly. Its products stand at the forefront of the industry with its safe and reliable, flexible operation, intelligent and efficient characteristics.

At present, the company has more than 10 technical patents, and has passed (ISO9001 quality management system certification) and other certifications. The company has been awarded a series of honors, such as "China 315 Honest Enterprise", "Member of Shandong Provincial Floor Industry Association", "Top 10 Honest Enterprise", "Excellent Enterprise in Jining City", which shows the comprehensive strength of Huaang Company as the industry leader.







# HA100-2 walking laser leveling machine

## HA100-2手扶式激光整平机

- ★ 整平宽度2525mm;
- ★ 配备本田的发动机、美国丹弗斯激光控制器;
- ★ 自动手动双控制模式,控制灵活,单人操作即可;
- ★ 双轮独立移动,差速转弯,灵活方便;
- ★ 激光发射器独立布置,大面积整体铺筑,并保证地面标高一致性,误差小,减少施工缝,使地面后期维护费用大为减少;
- ★ 每分钟3600次的高频振动器,能有效解决地面空鼓、起壳、开裂、不平等问题;
- ★ 激光测控系统自动控制标高,实现精确找平;
- ★ 每小时施工面积200m<sup>2</sup>以上,每天完成工作2000m<sup>2</sup>;

类型		
动力配置	型号	本田发动机(手启动)
	功率	3.0KW
	燃油容积	17L(可施工作业18小时)
	燃油消耗量	0.8-1.3L/h
激光系统	激光发射系统	日本拓普康/瑞士徕卡发射器
	激光接收系统	德国科美克接收器/瑞士徕卡接收器
	激光控制系统	美国丹弗斯激光控制系统
	激光系统控制效果	平面、斜面或双坡(三维)
	激光系统控制方式	激光微系统自动控制,实现自动找平
整平系统	悬挂方式	整平头独立悬挂系统(在复杂工程上可保持机身平衡)
	振板宽度	2525mm
	整平厚度	标配680轮胎50-250mm/选配980轮胎50-400mm
	激振力	2000N
	振动马达转速	3600rpm
行走系统	行走驱动	伺服驱动电机
	行走方式	电控伺服系统自动行走
	行走速度	0-28m/min
	工作速度	4m-20m/min
	尾轮控制方式	手动升降
尺寸重量	行走轮胎	实心防滑防刺窄胎/选配(充气宽胎)
	机身尺寸	3200x2700x1120mm
	机身重量	260kg

- ★ Leveling width: 2525mm;
- ★ Equipped with Honda's engine and American Danfoss laser controller;
- ★ Automatic and manual double control mode, flexible control, single person operation;
- ★ Independent movement of two wheels, differential turning, flexible and convenient;
- ★ The laser transmitter is arranged independently. The large area is paved as a whole, The consistency of ground elevation is guaranteed, with small error, The construction joint is reduced, which greatly reduces the cost of ground maintenance in the later stage;
- ★ The high-frequency vibrator with 3600 times per minute can effectively solve the problems of hollowing, shelling, cracking and inequality on the ground;
- ★ The laser measurement and control system automatically controls the elevation to achieve accurate leveling;
- ★ The construction area is more than 200m<sup>2</sup> per hour, and the work is 2000m<sup>2</sup> per day;

Model	Honda Engine (hand start)
Power	3.0KW
Fuel volume	17L (18 hours for construction)
Fuel consumption	0.8-1.3L/h
Laser emission system	Japanese Topcon transmitter/Swiss Leica transmitter
Laser receiving system	German CosmiQue receiver/Swiss Leica receiver
Laser control system	American Danfoss laser control system
Control effect of laser system	Plane, slope or double slope (3D)
Laser system control mode	Automatic control of laser micro-system to realize automatic leveling
Suspension mode	Flat head independent suspension system (Maintains machine balance in complex projects)
Vibration plate width	2525mm
Leveling thickness	Standard 680 tire 50-250mm/optional 980 tire 50-400mm
Exciting force	2000N
Vibration motor speed	3600rpm
Travel drive	Servo drive motor
Walking mode	Automatic travel of electric control servo system
Walking speed	0-28m/min
Working speed	4m-20m/min
Tail wheel control mode	Manual lifting
Travel tire	Solid anti-skid and stab-resistant narrow tire/optional (inflatable wide tire)
Machine size	3200x2700x1120mm
Machine weight	260kg





# HA100-2L display type laser leveling machine

- ★ Leveling width 2955mm;
- ★ Adopt Mitsubishi servo system, Mitsubishi control system, 7-inch Mitsubishi display screen, flatness effect error and other real-time monitoring;
- ★ Automatic and manual double control mode, flexible control, single person operation;
- ★ Independent movement of two wheels, differential turning, flexible and convenient;
- ★ The laser transmitter is arranged independently, The large area is paved as a whole, The consistency of ground elevation is guaranteed, with small error, The construction joint is reduced, which greatly reduces the cost of ground maintenance in the later stage;
- ★ The high-frequency vibrator with 3600 times per minute can effectively solve the problems of hollowing, shelling, cracking and inequality on the ground;
- ★ The laser measurement and control system automatically controls the elevation to achieve accurate leveling;
- ★ The construction area is 300m<sup>2</sup> per hour, and the workload is 3000m<sup>2</sup> per day;
- ★ It has the characteristics of control system column blocking mode, lifting push rod braking function, etc.

Model	Jialing/Honda engine (electric starting)
Power	5.5KW
Fuel volume	25L (18 hours for construction)
Fuel consumption	1.1-1.6L/h
Laser emission system	Japanese Topcon transmitter/Swiss Leica transmitter
Laser receiving system	German CosmiQue receiver/Swiss Leica receiver
Laser control system	Japan Mitsubishi Laser Control System
Laser system control	Microcomputer laser scanning
Control effect of laser system	Plane, slope or double slope (3D)
Laser system control mode	Automatic control of laser micro-system to realize automatic leveling
Suspension mode	Flat head independent suspension system (Maintains machine balance in complex projects)
Vibration plate width	2955mm
Leveling thickness	Standard 680 tire 50-250mm/optional 980 tire 50-400mm
Exciting force	2000N
Vibration motor speed	3600rpm
Travel drive	Mitsubishi servo drive motor
Walking mode	Automatic travel of electric control servo system
Walking speed	0-28m/min
Working speed	4m - 20m/min (adjustable speed)
Tail wheel control mode	Manual lifting
Travel tire	Solid anti-skid and stab-resistant narrow tire/optional (inflatable wide tire)
Machine size	3250x3200x1250mm
Machine weight	420kg

## HA100-2L显示屏款激光整平机

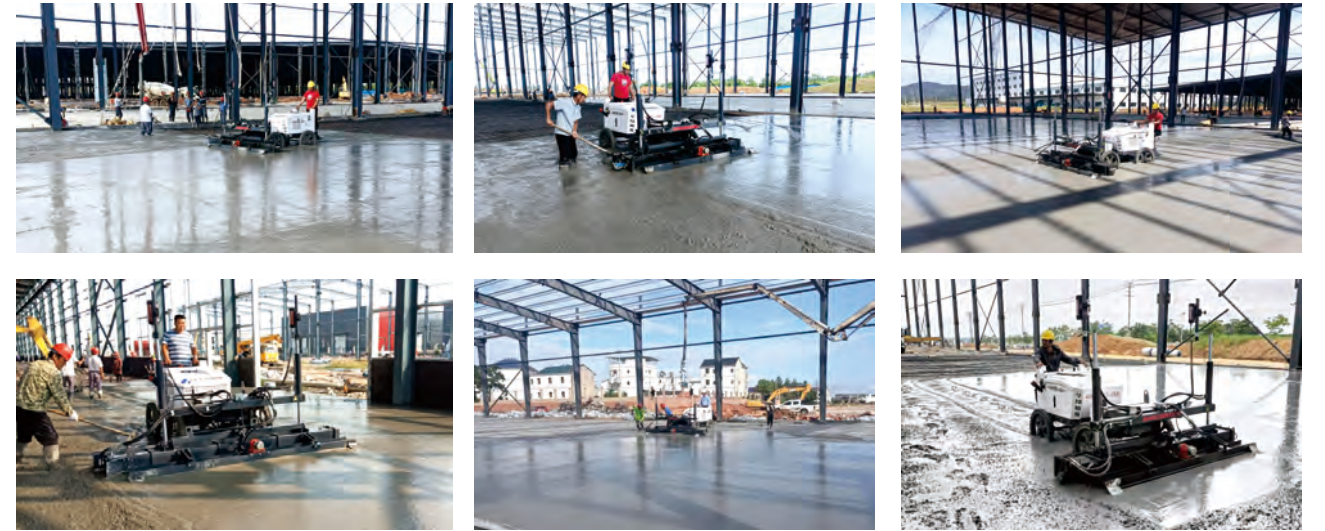
- ★ 整平宽度2955mm;
- ★ 采用日本三菱伺服系统,三菱控制系统,7英寸日本三菱显示屏,平整度效果误差等实时监控;
- ★ 自动手动双控制模式,控制灵活,单人操作即可;
- ★ 双轮独立移动,差速转弯,灵活方便;
- ★ 激光发射器独立布置,大面积整体铺筑,并保证地面标高一致性,误差小,减少施工缝,使地面后期维护费用大为减少;
- ★ 每分钟3600次的高频振动器,能有效解决地面空鼓、起壳、开裂、不平等问题;
- ★ 激光测控系统自动控制标高,实现精确找平;
- ★ 每小时施工面积 300m<sup>2</sup>,每天完成工作量 3000m<sup>2</sup>;
- ★ 具有控制系统立柱遮挡模式、提升推杆制动功能等特点。

类型	型号	嘉陵/本田发动机 (电启动)
动力配置	功率	5.5KW
	燃油容积	25L (可施工作业18小时)
	燃油消耗量	1.1-1.6L/h
	激光发射系统	日本拓普康/瑞士徕卡发射器
激光系统	激光接收系统	德国科美克接收器/瑞士徕卡接收器
	激光控制系统	日本三菱激光控制系统
	激光系统控制	微电脑激光扫描
	激光系统控制效果	平面、斜面或双坡 (三维)
	激光系统控制方式	激光微系统自动控制,实现自动找平
	整平系统	悬挂方式
振板宽度		2955mm
整平厚度		标配 680轮胎 50-250mm/选配 980轮胎 50-400mm
激振力		2000N
振动马达转速		3600rpm
行走系统	行走驱动	日本三菱伺服驱动电机
	行走方式	电控伺服系统自动行走
	行走速度	0-28m/min
	工作速度	4m-20m/min (速度可调控)
	尾轮控制方式	手动升降
	行走轮胎	实心防滑防刺窄胎/选配 (充气宽胎)
尺寸重量	机身尺寸	3250x3200x1250mm
	机身重量	420kg



# HA100-4A 后座款激光整平机

- ★ 整平宽度2525mm;
- ★ 发动机采用本田690发动机,性能稳定;
- ★ 整车液压,四轮驱动,四轮转向,动力强劲,灵活方便;
- ★ 蛟龙摊铺混凝土,减少人力成本,效率翻倍提高;
- ★ 不依靠人工摊铺,平整度效果更好;
- ★ 日本拓普康显示器可实时调整各种参数;
- ★ 增加初摊功能,节省人工快速摊铺;
- ★ 电子振动每分钟3600次振动,保证混凝土的密实度。



## HA100-4A Rear seat laser leveling machine

类型		
动力配置	型号	本田690发动机
	功率	17.6KW/24HP
	机油容积	1.4L
	油箱容积	45L
	燃油消耗	2-3L/h
激光系统	激光发射系统	日本拓普康发射器/瑞士徕卡发射器
	激光接收系统	德国科美克接收器/徕卡MS720接收器
	激光控制系统	美国丹弗斯激光控制系统
	激光系统控制效果	平面、斜面或双坡(三维)
	激光系统控制方式	激光微系统自动控制,实现自动找平
整平系统	悬挂方式	固定式
	振板宽度	2525mm
	整平厚度	680轮胎 50-300mm
	激振力	2000N
	振动马达转速	3600rpm
行走系统	行走驱动	低速大扭矩减速机+液压驱动马达
	液压系统	美国丹弗斯
	智能行走控制系统	一键定速巡航
	行走方式	电控伺服系统自动行走
	行走速度	0-55m/min
	工作速度	4m-20m/min(速度可调控)
	摊铺方式	液压蛟龙摊铺
尺寸重量	行走轮胎	实心防滑防刺窄胎
	机身尺寸	3500×2850×1700mm
	机身重量	1000kg

- ★ Leveling width: 2525mm;
- ★ The engine adopts Honda 690 engine with stable performance;
- ★ Vehicle hydraulic, four-wheel drive, four-wheel steering, strong power, flexible and convenient;
- ★ The concrete is paved by twisting the dragon, reducing the labor cost and doubling the efficiency;
- ★ The smoothness effect is better without manual paving;
- ★ Japanese Topcon display can adjust various parameters in real time;
- ★ Increase the function of initial paving and save labor for rapid paving;
- ★ Electronic vibration is 3600 times per minute to ensure the compactness of concrete.

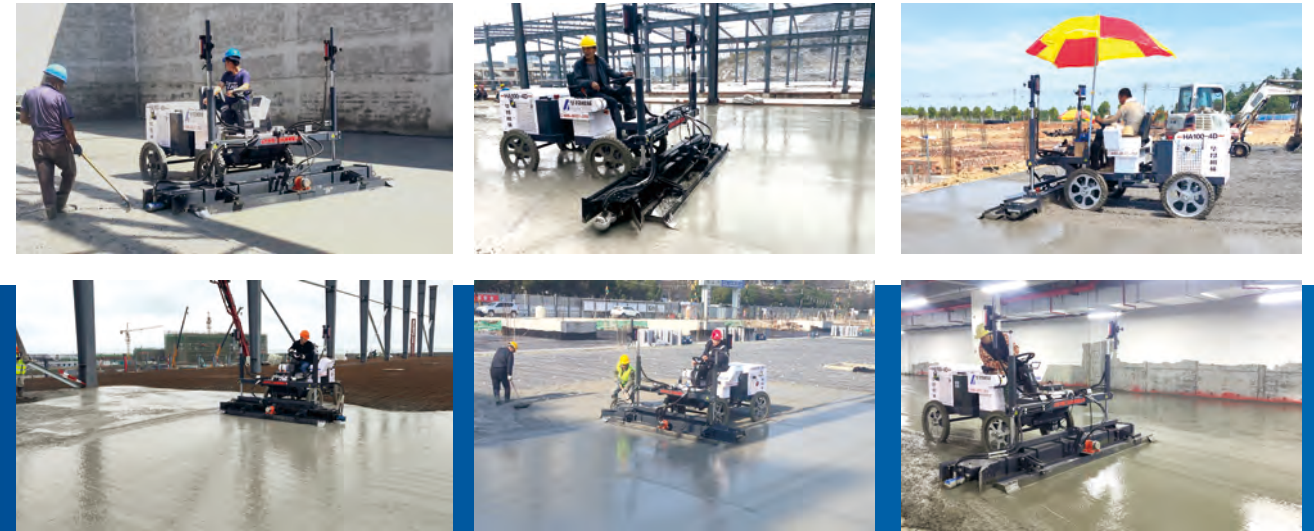
Model	Honda 690 engine
Power	17.6KW/24HP
Oil volume	1.4L
Tank volume	45L
Fuel consumption	2-3L/h
Laser emission system	Japanese Topcon transmitter/ Swiss Leica transmitter
Laser receiving system	German CosmiQue /Leica Ms720 Receiver
Laser control system	Danfoss Laser Control System
Control effect of laser system	Plane, slope or double slope (3D)
Laser system control mode	Automatic control of laser micro-system to realize automatic leveling
Suspension mode	Fixed
Vibration plate width	2525mm
Leveling thickness	680 tires 50-300 mm
Exciting force	2000N
Vibration motor speed	3600rpm
Travel drive	Low-speed high-torque reducer+hydraulic drive motor
Hydraulic system	Danfoss, USA
Intelligent travel control system	One-button cruise control
Walking mode	Automatic travel of electric control servo system
Walking speed	0-55m/min
Working speed	4m - 20m/min (adjustable speed)
Paving method	Hydraulic auger paving
Travel tire	Solid anti-skid and stab-resistant narrow tire
Machine size	3500×2850×1700mm
Machine weight	1000kg



# HA100-4D 方向盘款激光整平机



- ★智能方向盘操作模式, 操控灵活, 单人即可操作施工, 舒适坐骑靠背, 挡手灵活;
- ★激光发射器独立布置, 保证地面标高一致, 不会产生误差;
- ★一体化整平头, 多道工序整合到一起, 提高功效, 节省人工;
- ★清晰可见的倒车影像, 能让工人更好的了解后方情况实时监控;
- ★每小时施工面积200m<sup>2</sup>以上, 每天能完成工作量在2000m<sup>2</sup>以上, 作业功效大大提高。也可以搭载3米工作头, 施工效率可增加到每天3000平方。



## HA100-4D steering wheel laser leveling machine

类型		
动力配置	型号	华昂定制款发动机
	功率	22KW/30HP
	机油容积	1.8L
	汽油容量	37L
	燃油消耗	3-4L/h
激光系统	激光发射系统	日本拓普康发射器/瑞士徕卡发射器
	激光接收系统	德国科美克接收器/徕卡MS720接收器
	激光控制系统	美国丹弗斯激光控制系统
	激光系统控制效果	平面、斜面或双坡(三维)
	激光系统控制方式	激光微系统自动控制, 实现自动找平
整平系统	悬挂方式	固定式
	振板宽度	2525mm/2955mm
	整平厚度	680轮胎 50-300mm
	激振力	2000N
	振动马达转速	3600rpm
行走系统	行走驱动	低速大扭矩减速机+液压驱动马达
	智能行走控制系统	一键定速巡航
	行走速度	0-55m/min
	工作速度	4m-20m/min (速度可调控)
	摊铺方式	液压绞龙摊铺
尺寸重量	行走轮胎	实心防滑防刺窄胎
	机身尺寸	3250x2850x1320mm
	机身重量	900kg

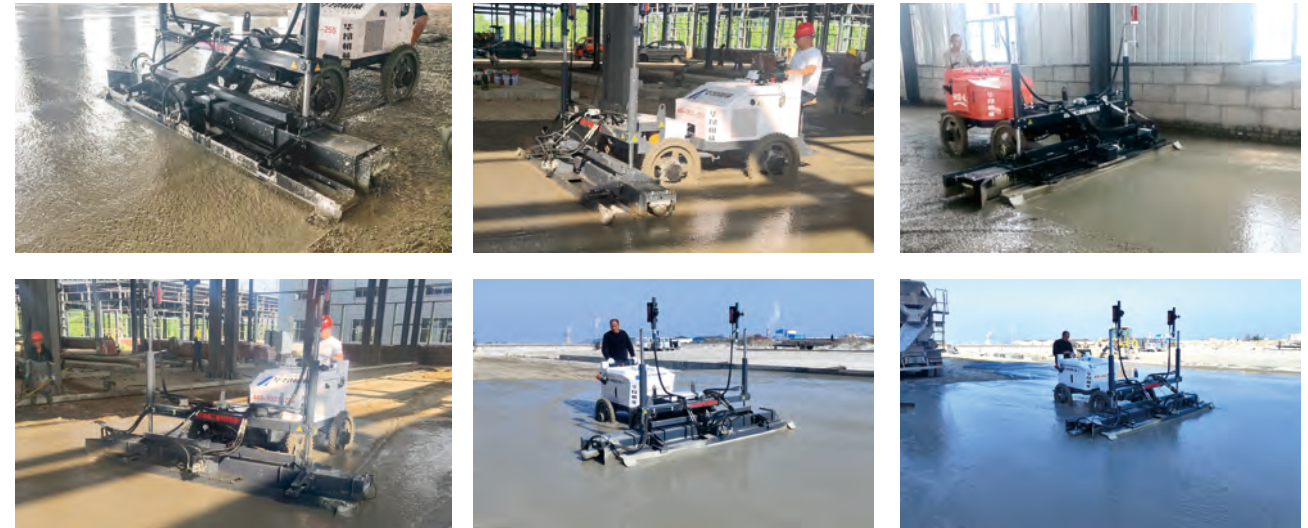
- ★ Intelligent steering wheel operation mode, flexible control, single person can operate the construction, comfortable seat back, flexible block; The laser transmitter is arranged independently to ensure that the ground elevation is consistent without error;
- ★ The integrated leveling head integrates multiple processes to improve efficiency and save labor; The clear and visible reverse image can help workers better understand the situation behind them in real-time video monitoring;
- ★ The construction area is more than 200m<sup>2</sup> per hour, and the workload can be completed more than 2000m<sup>2</sup> per day, which greatly improves the operation efficiency. It can also carry a 3m working head, and the construction efficiency can be increased to 3000 square meters per day.

Model	Hua Ang custom engine
Power	22KW/30 HP
Oil volume	1.8L
Gasoline capacity	37L
Fuel consumption	3-4L/h
Laser emission system	Japanese Topcon transmitter/ Swiss Leica transmitter
Laser receiving system	German CosmiQue /Leica Ms720 Receiver
Laser control system	Danfoss Laser Control System
Control effect of laser system	Plane, slope or double slope (3D)
Laser system control mode	Automatic control of laser micro-system to realize automatic leveling
Suspension mode	Fixed
Vibration plate width	2525mm/2955mm
Leveling thickness	680 tires 50-300 mm
Exciting force	2000N
Vibration motor speed	3600rpm
Travel drive	Low-speed high-torque reducer+hydraulic drive motor
Intelligent travel control system	One-button cruise control
Walking speed	0-55m/min
Working speed	4m - 20m/min (adjustable speed)
Paving method	Hydraulic auger paving
Travel tire	Solid anti-skid and stab-resistant narrow tire
Machine size	3250x2850x1320mm
Machine weight	900kg



# HA100-4L全液压款激光整平机

- ★ 整平宽度2955mm;
- ★ 发动机采用原装进口35马力百力通,作业宽度增加,效率更高;
- ★ 行星减速机,四轮驱动,四轮转向,动力强劲,灵活方便;
- ★ 蛟龙摊铺混凝土,减少人力成本效率翻倍提高;
- ★ 不依靠人工摊铺,平整度效果更好;
- ★ 液压振动,地面密实度更好;
- ★ 增加初摊功能,节省人工快速摊铺;
- ★ 液压振动每分钟4000次振动,保证混凝土的密实度;



## HA100-4L full hydraulic laser leveling machine

类型		
动力配置	型号	美国原装进口百利通发动机
	功率	25.73KW/35HP
	机油容积	2.3L
	油箱容积	45L
	燃油消耗	4-7L/h
激光系统	激光发射系统	日本拓普康/瑞士徕卡发射器
	激光接收系统	德国科美克接收器/瑞士徕卡接收器
	激光控制系统	美国丹弗斯激光控制系统
	激光系统控制效果	平面、斜面或双坡(三维)
	激光系统控制方式	激光微系统自动控制,实现自动找平
整平系统	悬挂方式	固定式
	振板宽度	2955mm
	整平厚度	680轮胎 50-300mm
	液压激振力	3000N
	振动马达转速	4000rpm
行走系统	行走驱动	行星减速机
	智能行走控制系统	一键定速巡航
	行走速度	0-60m/min
	工作速度	3m-30m/min(速度可调控)
	摊铺方式	液压蛟龙摊铺
尺寸重量	行走轮胎	实心防滑防刺窄胎
	机身尺寸	3500x3300x1700mm
	机身重量	1100kg

- ★ Leveling width 2955mm;
- ★ The engine adopts the original imported 35 horsepower Briggs Stratton, which increases the operation width and efficiency;
- ★ Planetary reducer, four-wheel drive, four-wheel steering, powerful, flexible and convenient;
- ★ Pave concrete with a twist to reduce labor costs and increase efficiency;
- ★ The smoothness effect is better and without manual paving;
- ★ Hydraulic vibration, better ground compactness;
- ★ Increase the function of initial paving and save labor for rapid paving;
- ★ Hydraulic vibration 4000 times per minute to ensure the compactness of concrete;
- ★ The American Danfoss display screen shows the flatness in real time, and can also adjust various parameters.

Model	Briggs Stratton engine imported from the USA
Power	25.73KW/35HP
Oil volume	2.3L
Tank volume	45L
Fuel consumption	4-7L/h
Laser emission system	Japanese Topcon transmitter/ Swiss Leica transmitter
Laser receiving system	German CosmiQue receiver/ Swiss Leica receiver
Laser control system	Danfoss Laser Control System
Control effect of laser system	Plane, slope or double slope (3D)
Laser system control mode	Automatic control of laser micro-system to realize automatic leveling
Suspension mode	Fixed
Vibration plate width	2955mm
Leveling thickness	680 tires 50-300 mm
Hydraulic excitation force	3000N
Vibration motor speed	4000rpm
Travel drive	Planetary reducer
Intelligent travel control system	One-button cruise control
Walking speed	0-60m/min
Working speed	3m-30m/min (adjustable speed)
Paving method	Hydraulic auger paving
Travel tire	Solid anti-skid and stab-resistant narrow tire
Machine size	3500x3300x1700mm
Machine weight	1100kg



# HA200-4MINI伸缩臂

- ★ 特别适合地下室施工,整机尺寸4500x2800x1900mm;
- ★ 该型号机器能够进行360°旋转,配置5.5m伸缩臂;
- ★ 单独触摸式支腿控制器可一键调平机身,也可单独控制;
- ★ 机器配备最先进的激光系统和全液压控制系统,使混凝土施工地面平整精度更高,密实性更强;
- ★ 整平宽度2780mm,灵活高效的液压系统可控制刮板和布料螺旋的高度,保持找平层平整度;
- ★ 特别适用于坍落度很低的混凝土,或者含有大骨料与钢纤维的混凝土。

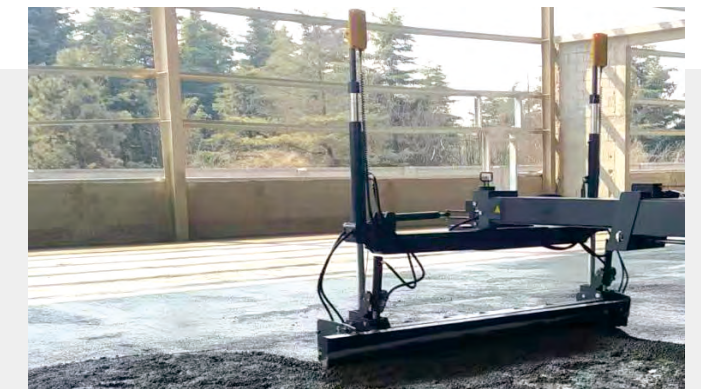
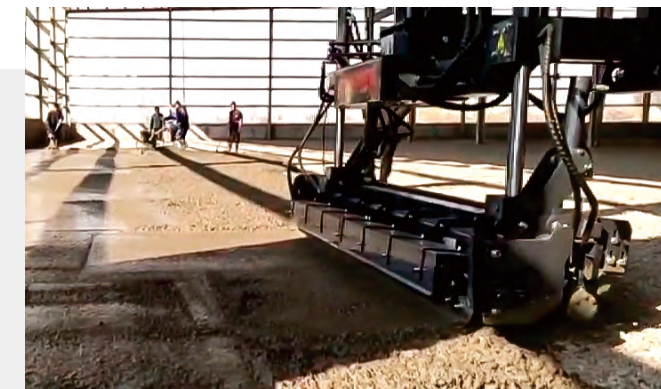
发动机		激光控制系统	
型号	常柴发动机	控制方式	微电脑激光扫描
类型	柴油机,4冲程水冷,四缸	控制效果	平面、斜坡或双坡
功率	36KW/50HP	动力	液压马达驱动
燃油容量	135L	激光系统	日本拓普康
燃油消耗量	5.5L/h	整平系统	
行走		材质	
驱动	液压四驱	整平宽度	镁合金 2780mm
转向模式	前轮/四轮/蟹型	摊铺方式	蛟龙摊铺
车轮	防滑实心轮胎	蛟龙动力	液压马达
支腿	四腿自调平	激振力	3000N
行驶速度	0-3km/h	振动频率	60Hz
工作速度	20m/min	摆动角度	±45°
座椅位置	左前	整平头调平控制	比例控制
前进、后退	怀挡式、无级变速	整平头高度	300mm
转向	方向盘	控制精度	±1.5mm
伸缩臂		尺寸及重量	
长度	5500mm	运输尺寸	6750x2250x1950mm
控制方式	手柄控制、无级变速	重量	4500kg



# HA200-4 MINI telescopic boom

- ★ Especially suitable for basement construction, the whole machine size 4500x2800x1900mm;
- ★ This model is capable of 360° rotation and 5.5m telescopic arm;
- ★ Separate touch leg controller can level the body with one click, or can be controlled separately;
- ★ The machine is equipped with the most advanced laser system and full hydraulic control system, so that the concrete construction ground leveling accuracy is higher, more dense;
- ★ Leveling width 2780mm, flexible and efficient hydraulic system can control the height of the scraper and fabric screw, maintain the flatness of the screed;
- ★ Especially suitable for concrete with very low slump, or concrete containing large aggregates and steel fibers.

ENGINE		LASER CONTROL SYSTEM	
Model	Changchai engine	Control mode	Microcomputer laser scanning
Type	Diesel engine, 4-stroke water cooling, four-cylinder	Controll effect	Plane, slope or double slope
Power	36KW/50HP	Power	Hydraulic motor drive
Fuel capacity	135L	Laser system	Japan Topcon
Fuel consumption	5.5L/h	LEVELING SYSTEM	
WALK		LEVELING SYSTEM	
Drive	Hydraulic 4WD	Texture of material	magnesium alloy
Steering mode	Front wheel/four wheel /crab type	Leveling width	2780mm
Wheel	Anti-skid solid tire	Paving method	Auger paving
Outrigger	Self-leveling of four legs	Auger power	Hydraulic motor
Travel speed	0-3km/h	Exciting force	3000N
Working speed	20m/min	Vibration frequency	60Hz
Seat position	Left front	Swing angle	±45°
Forward and backward	column shift, stepless speed change	Leveling control of leveling head	Proportional control
To turn to	Steering wheel	Flathead height	300mm
		Control accuracy	±1.5mm
TELESCOPIC BOOM		SIZE AND WEIGHT	
Length	5500mm	Transport dimensions	6750x2250x1950mm
Control mode	Handle control, stepless speed change	Weight	4500kg





# HA200-4中型伸缩臂

- ★ 该型号机器能够进行360°旋转，配置了3/6m的伸缩臂和单独触摸式支腿控制器；
- ★ 机器配备最先进的激光系统和全液压控制系统，使混凝土施工地面平整精度更高，密实性更强；
- ★ 整平宽度2955mm，每次可完成18平方米混凝土的整平，灵活高效的液压系统可控制刮板和布料螺旋的高度，保持找平层平整度；
- ★ 特别适用于坍落度很低的混凝土，或者含有大骨料与钢纤维的混凝土。

发动机		激光控制系统	
型号	Yanmar 4TNV94L	控制方式	微电脑激光扫描
类型	柴油机,4冲程水冷,四缸	控制效果	平面、斜坡或双坡
功率	35.5kw/50HP	动力	液压马达驱动
燃油容量	110L	激光系统	日本拓普康
燃油消耗量	5L/h	整平系统	
行走		材质	
驱动	液压四驱	整平宽度	镁合金
转向模式	前轮/四轮/蟹型	摊铺方式	蛟龙摊铺
车轮	防滑实心轮胎	蛟龙动力	液压马达
支腿	四腿自调平	激振力	3000N
行驶速度	0-6km/h	振动频率	60Hz
工作速度	20m/min	摆动角度	±45°
座椅位置	左前	整平头调平控制	比例控制
前进、后退	怀挡式、无级变速	整平头高度	500mm
转向	方向盘	控制精度	±1.5mm
伸缩臂		尺寸及重量	
长度	6000mm	运输尺寸	7300×2250×2300mm
控制方式	手柄控制、无级变速	重量	6500kg



# HA200-4 medium telescopic boom

- ★ This model of machine can rotate 360 ° and is equipped with 3/6m telescopic arm and separate touch outrigger controller;
- ★ The machine is equipped with the most advanced laser system and full hydraulic control system, which makes the concrete construction ground more precise and compact;
- ★ The leveling width is 2955mm, and the leveling of 18 square meters of concrete can be completed each time. The flexible and efficient hydraulic system can control the height of the scraper and the distribution spiral to maintain the flatness of the leveling layer;
- ★ It is especially suitable for concrete with low slump or concrete containing large aggregate and steel fiber.

ENGINE		LASER CONTROL SYSTEM	
Model	Yanmar 4TNV94L	Control mode	Microcomputer laser scanning
Type	Diesel engine, 4-stroke water cooling, four-cylinder	Controll effect	Plane, slope or double slope
Power	35.5kw/50HP	Power	Hydraulic motor drive
Fuel capacity	110L	Laser system	Japan Topcon
Fuel consumption	5L/h	LEVELING SYSTEM	
WALK		LEVELING SYSTEM	
Drive	Hydraulic 4WD	Texture of material	magnesium alloy
Steering mode	Front wheel/four wheel /crab type	Leveling width	2955mm
Wheel	Anti-skid solid tire	Paving method	Auger paving
Outrigger	Self-leveling of four legs	Auger power	Hydraulic motor
Travel speed	0-6km/h	Exciting force	3000N
Working speed	20m/min	Vibration frequency	60Hz
Seat position	Left front	Swing angle	±45°
Forward and backward	column shift, stepless speed change	Leveling control of leveling head	Proportional control
To turn to	Steering wheel	Flathead height	500mm
		Control accuracy	±1.5mm
TELESCOPIC BOOM		SIZE AND WEIGHT	
Length	6000mm	Transport dimensions	7300×2250×2300mm
Control mode	Handle control, stepless speed change	Weight	6500kg





# HA200-4L大型伸缩臂

- ★ 该型号机器能够进行360°旋转，配置6m长伸缩臂，每次可完成24平方米混凝土的整平；
- ★ 配备超大燃油箱，可连续工作20多个小时；
- ★ 单独触摸式支腿控制器可一键调平机身，也可单独控制；
- ★ 机器配备最先进的激光系统和全液压控制系统，使混凝土施工地面平整精度更高，密实性更强；
- ★ 整平宽度4070mm，灵活高效的液压系统可控制刮板和布料螺旋的高度，保持找平层平整度；
- ★ 特别适用于坍落度很低的混凝土，或者含有大骨料与钢纤维的混凝土。

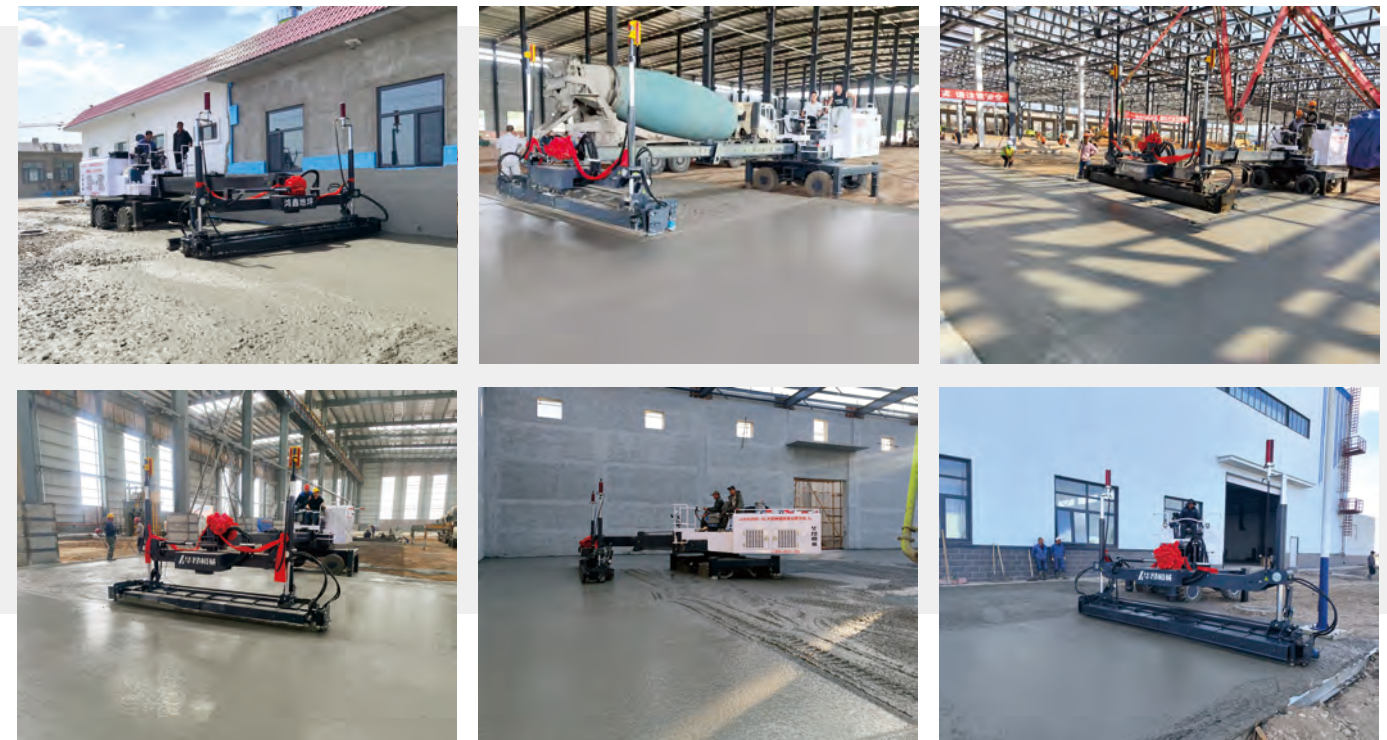
发动机		激光控制系统	
型号	Yanmar 4TNV98T	控制方式	微电脑激光扫描
类型	柴油机,4冲程水冷,四缸	控制效果	平面、斜坡或双坡
功率	63.9KW/86HP	动力	液压马达驱动
燃油容量	110L	激光系统	日本拓普康/德国摩巴
燃油消耗量	6L/h	整平系统	
行走		材质	
驱动	液压四驱	整平宽度	镁合金
转向模式	前轮/四轮/蟹型	摊铺方式	绞龙摊铺
车轮	防滑实心轮胎	绞龙动力	液压马达
支腿	四腿自调平	激振力	3000N
行驶速度	0-6km/h	振动频率	60Hz
工作速度	20m/min	摆动角度	±45°
座椅位置	中置式	整平头调平控制	比例控制
前进、后退	手柄控制、无级变速	整平头高度	500mm
转向	手柄控制、无级变速	控制精度	±1.5mm
伸缩臂		尺寸及重量	
长度	6000mm	运输尺寸	9000×2250×2980mm
控制方式	手柄控制、无级变速	重量	8600kg



# HA200-4L large telescopic boom

- ★ The machine can rotate 360° and is equipped with a 6m long telescopic arm, which can complete the leveling of 24 square meters of concrete each time;
- ★ Equipped with large fuel tank, it can work continuously for more than 20 hours;
- ★ The single touch outrigger controller can level the machine with one button, and can also be controlled;
- ★ The machine is equipped with the most advanced laser system and full hydraulic control system, which makes the concrete construction ground more precise and compact;
- ★ The leveling width is 4070mm. The flexible and efficient hydraulic system can control the height of the scraper and the cloth spiral to maintain the flatness of the leveling layer;
- ★ It is especially suitable for concrete with low slump or concrete containing large aggregate and steel fiber.

ENGINE		LASER CONTROL SYSTEM	
Model	Yanmar 4TNV98T	Control mode	Microcomputer laser scanning
Type	Diesel engine, 4-stroke water cooling, four-cylinder	Control effect	Plane, slope or double slope
Power	63.9KW/86HP	Power	Hydraulic motor drive
Fuel capacity	110L	Laser system	Japan Topcon/Germany Moba
Fuel consumption	6L/h	LEVELING SYSTEM	
WALK		TEXTURE OF MATERIAL	
Drive	Hydraulic 4WD	Texture of material	magnesium alloy
Steering mode	Front wheel, four-wheel, crab type	Leveling width	4070mm
Wheel	Anti-skid solid tire	Paving method	Auger paving
Outrigger	Self-leveling of four legs	Auger power	Hydraulic motor
Travel speed	0-6km/h	Exciting force	3000N
Working speed	20m/min	Vibration frequency	60Hz
Seat position	Central type	Swing angle	±45°
Forward and backward	Handle control, stepless speed change	Leveling control of leveling head	Proportional control
To turn to	Handle control, stepless speed change	Flathead height	500mm
		Control accuracy	±1.5mm
TELESCOPIC BOOM		SIZE AND WEIGHT	
Length	6000mm	Transport dimensions	9000×2250×2980mm
Control mode	Handle control, stepless speed change	Weight	8600kg





# HA150-4MINI Topping spreader



- ★ The whole vehicle is equipped with imported hydraulic system, stable performance, durable, automatic feeding function;
- ★ There is also a large capacity auxiliary hopper to reduce the feeding frequency to improve work efficiency, handwheel type to adjust the amount of spreading, spreading bin with side shift function;
- ★ Precise spreading without spreading dead Angle, dial button proportional switch control, endless speed is simple, flexible and easy to operate.

## HA150-4MINI撒料机

- ★ 整车配备进口液压系统,性能稳定,经久耐用、自动上料功能;
- ★ 另有大容量副料斗降低加料频率提高工作效率、手轮式调节撒料量,撒料仓带侧移功能;
- ★ 撒料精确无摊铺死角、拨钮比例开关控制,无极变速简单灵活易操作。

发动机	常柴发动机	单位面积撒料量	3-7(可调)
功率	36KW/50HP	料仓容量	700kg
燃油箱容积	130L(可工作20小时)	撒料左右滑移量	200mm
驱动	液压四驱	上料方式	自动上料
行驶速度	0-3km/h	机身回转	液压自动
伸缩臂	6.5米	外形尺寸	5200x2250x2700mm
撒料宽度	1.8米	重量	4500kg

engine	Changchai engine	Sprinkling per unit area	3-7(adjustable)
power	36KW/50HP	Bunker capacity	700kg
Fuel tank volume	130L(can work 20 hours)	Amount of slippage from left to right	200mm
actuate	Hydraulic four-wheel drive	Loading method	Automatic feeding
Travel speed	0-3km/h	Fuselage rotation	Hydraulic automatic
Telescopic arm	6.5 m	Overall dimension	5200x2250x2700mm
Spread width	1.8 m	weight	4500kg





## HA-Z836 座驾抹光机



- ★ 装备进口本田汽油机, 名牌品质保证, 性能优越, 启动容易;
- ★ 具有双盘和机身重量大的特点, 对地面具有更好的压实效果, 可快速提浆;
- ★ 机械式转向操作系统, 反应灵敏, 控制轻松自如;
- ★ 刀片加宽至200mm, 更耐用收光效果更好, 保证了混凝土地面平整度;
- ★ 采用新型离合器, 不怕半离合, 耐用不容易坏;
- ★ 高速免维护减速机转速提升至170转。

型号	HA-Z836	油箱容积	35L
发动机	本田GX690	水箱容积	35L
功率	17.6kw/24HP	减速机类型	免维护
叶片孔距	125mm	操作方式	驾驶式
磨盘直径	940mm	启动方式	电启动
工作效率	400m <sup>2</sup> /h	动力类型	四冲程汽油机
配置	喷水+照明	重量	380kg
减速机工作温度	20-40°C	外形尺寸	1980x1040x1400mm

## HA-Z836 Seat polishing machine

- ★ Equipment imported Honda gasoline engine, brand-name quality assurance, superior performance, easy to start;
- ★ It has the characteristics of double disc and large fuselage weight, which has better compaction effect on the ground and can quickly extract pulp;
- ★ Mechanical steering operating system, responsive, easy to control;
- ★ The blade is widened to 200mm, which is more durable and has better finishing effect, ensuring the flatness of the concrete floor;
- ★ Using a new clutch, not afraid of semi-clutch, durable not easy to break;
- ★ High speed maintenance-free reducer speed increased to 170 RPM.

Model	HA-Z836	Tank volume	35L
Engine	Honda GX690	Water tank volume	35L
Power	17.6kw/24HP	Reducer type	Maintenance-free
Blade hole pitch	125mm	Operation mode	Driving type
Grinding disc diameter	940mm	Start mode	Electric starting
Work efficiency	400m <sup>2</sup> /h	Power type	Four-stroke gasoline engine
To configure	Water spray+lighting	Weight	380kg
Gearbox operating temperature	20-40°C	Overall dimension	1980*1040*1400mm



## HA-Z830 座驾抹光机



- ★ 装备百力通XR25T2发动机, 名牌品质保证, 性能优越, 启动容易;
- ★ 具有双盘和机身重量大的特点, 对地面具有更好的压实效果, 可快速提浆;
- ★ 机械式转向操作系统, 反应灵敏, 控制轻松自如;
- ★ 采用新型离合器, 不怕半离合, 耐用不容易坏;
- ★ 高速免维护减速机转速提升至150转。

型号	HA-Z830	油箱容积	6.6L
发动机	百力通XR25T2	水箱容积	10L
功率	9.9kw/13.5HP	减速机类型	免维护
叶片孔距	40-120mm	操作方式	驾驶式
磨盘直径	815mm	启动方式	电启动
工作效率	200m <sup>2</sup> /h	动力类型	四冲程汽油机
配置	喷水+照明	重量	236kg
减速机工作温度	20-40°C	外形尺寸	1690x845x1020mm

## HA-Z830 Seat polishing machine

- ★ Equipment imported Honda gasoline engine, brand-name quality assurance, superior performance, easy to start;
- ★ It has the characteristics of double disc and large fuselage weight, which has better compaction effect on the ground and can quickly extract pulp;
- ★ Mechanical steering operating system, responsive, easy to control;
- ★ The blade is widened to 200mm, which is more durable and has better finishing effect, ensuring the flatness of the concrete floor;
- ★ Using a new clutch, not afraid of semi-clutch, durable not easy to break;
- ★ High speed maintenance-free reducer speed increased to 170 RPM.

Model	HA-Z830	Tank volume	6.6L
Engine	Briggs Statton XR25T2	Water tank volume	10L
Power	9.9kw/13.5HP	Reducer type	Maintenance-free
Blade hole pitch	40-120mm	Operation mode	Driving type
Grinding disc diameter	815mm	Start mode	Electric starting
Work efficiency	200m <sup>2</sup> /h	Power type	Four-stroke gasoline engine
To configure	Water spray+lighting	Weight	236kg
Gearbox operating temperature	20-40°C	Overall dimension	1690*845*1020mm





# 汽油/柴油切缝机

# Gasoline/diesel slicing machine



## HA-Q500汽油切缝机

## HA-C500柴油切缝机

- ★ 锯片护罩, 镶嵌式可调节; 曲柄螺旋, 升降自由调节;
- ★ 切割、刻纹一机两用省成本; 自动喷淋, 速度20m/h.

- ★ 锯片护罩, 镶嵌式可调节; 曲柄螺旋, 升降自由调节;
- ★ 切割、刻纹一机两用省成本; 自动喷淋, 速度20m/h.

- ★ Saw blade shield, inlaid adjustable;
- ★ Crank screw, free adjustment for lifting and lowering;
- ★ Cutting and engraving with one machine can save costs;
- ★ Automatic spray, manual rotation, speed 20 m/h.

型号	HA-Q500
发动机	汽油
功率	9.5kw/13HP
切割深度	3-18cm
调节方式	手动旋转
最高转速	3600rpm
行走方式	手推式
刀片直径	400-500mm
切割速度	20m/h
洒水系统	自动喷淋
机器重量	140kg

型号	HA-C500
发动机	柴油
功率	11kw/15HP
切割深度	3-18cm
调节方式	手动旋转
最高转速	3600rpm
行走方式	手推式
刀片直径	400-500mm
切割速度	20m/h
洒水系统	自动喷淋
机器重量	140kg

Type number	HA-Q500
Engine	Gasoline
Power	9.5kw/13HP
Cutting depth	3-18cm
Regulation mode	Manual rotation
Maximum speed	3600rpm
Walking mode	Hand push type
Blade diameter	400-500mm
Cutting speed	20m/h
Sprinkler system	Automatic spray
Machine weight	140kg

Type number	HA-C500
Engine	Diesel oil
Power	11kw/15HP
Cutting depth	3-18cm
Regulation mode	Manual rotation
Maximum speed	3600rpm
Walking mode	Hand push type
Blade diameter	400-500mm
Cutting speed	20m/h
Sprinkler system	Automatic spray
Machine weight	140kg