

过渡接头

TRANSITION
FITTINGS

用于整个液压系统中起到过渡、传递能量的连接件。 Fittings used to transit and transfer energy throughout the hydraulic system.

产品类别:

PRODUCT CATEGORIES:

法兰夹、油口堵头、日本公制螺纹60°锥面密封接头、公制螺纹74°锥面扩口密封接头、公制螺纹O形圈平面密封接头、卡套螺母、法兰接头、弯通接头、可调向接头、油口连接、组合连接、美制螺纹NPT,NPSM接头、美制螺纹O形圈平面ORFS接头、美制螺纹74°锥面密封接头、英锥管螺纹接头、日本英管螺纹60°锥面密封接头、英管螺纹60°锥面密封接头等。

Flange clamps, oil port plugs, Japanese metric thread 60° cone fittings, metric thread 74° cone flared tube fittings, metric thread O-ring face seal fittings, bite type nuts, flange fittings, union elbow fittings, adjustable tube fittings, oil port fittings, tube-to-swivel fittings, NPT NPSM fittings, ORFS fittings, JIC 74° cone flared tube fittings, BSPT thread fittings, Japanese BSP thread 60° cone fittings, BSP thread 60° cone fittings, etc.

应用标准选用:

APPLIED STANDARD:

ISO8434, ISO6149, ISO1179, ISO11926, JISB8363, SAEJ516, SAEJ476, ISO8434, ISO6149, ISO1179, ISO11926, JISB8363, SAEJ516, SAEJ476, etc.



适用压力 Applicable pressure

16~60MPa

性能特点 Performance features

体积小, 耐压性高 (Small size and high withstand pressure)

材质选用 Material selection

碳钢 (20#, 35#, 45#) 不锈钢 (304, 316) Carbon steel (20#, 35#, and 45#) and stainless steel (304 and 316)

软管接头

HOSE
FITTINGS

连接软管与液压系统控制元件。 Used to connect hoses to the control elements of the hydraulic system.

产品类别:

PRODUCT CATEGORIES:

扣压式软管接头: 美制JIC螺纹74°密封、美制ORFS螺纹密封、美制锥螺纹密封、日式英管螺纹60°、日式公制螺纹60°、英制球面密封、英锥管螺纹密封、英管螺纹60°锥面密封、公制螺纹74°锥面密封、公制平面密封、公制球面密封、公制24°锥系列、SAE法兰系列、美制ORFS螺纹密封、美制JIC螺纹74°密封、英管螺纹60°锥面密封、公制24°锥系列、铰接式等。

一体式软管接头: SAE法兰系列、美制ORFS螺纹密封、美制JIC螺纹74°密封、英管螺纹60°锥面密封、公制24°锥系列等。

Swaged hose fittings: JIC thread 74° fittings, ORFS thread fittings, NPT thread fittings, Japanese BSP thread 60° cone fittings, Japanese metric thread 60° cone fittings, BST spherical seal fittings, BSPT thread fittings, BSP thread 60° cone fittings, metric thread 74° cone fittings, metric thread face seal fittings, metric thread spherical seal fittings, metric thread 24° cone series, SAE flange series, ORFS thread fittings, JIC thread 74° fittings, BSP thread 60° cone fittings, metric thread 24° cone series, adjustable fittings, etc.

One-piece hose fittings: SAE flange series, ORFS thread fittings, JIC thread 74° fittings, BSP thread 60° cone fittings, metric thread 24° cone series, etc.

应用标准选用:

APPLIED STANDARD:

ISO8434, ISO12151, SAEJ518, SAEJ476A, SAEJ516, JIS B8363, GB/T9065.3, ISO8434, ISO12151, SAEJ518, SAEJ476A, SAEJ516, JIS B8363, GB/T9065.3, etc.



适用压力 Applicable pressure

16~60MPa

性能特点 Performance features

百万脉冲测试, 耐压性高 (Megapulse test and high withstand pressure)

材质选用 Material selection

碳钢 (20#, 35#, 45#) 不锈钢 (304, 316) Carbon steel (20#, 35#, and 45#) and stainless steel (304 and 316)

<https://www.sdfsyy.cn>

HYDRAULIC FLUID FITTINGS PRODUCT ALBUM

液压流体件 阀组产品手册



微信公众号
WECHAT OFFICIAL ACCOUNT

山东富盛液压科技有限公司

SHANDONG FUSHENG HYDRAULIC TECHNOLOGY CO., LTD

地址: 山东省临沂市经济技术开发区昆明路66号

电话: 0539-8785865

网址: <https://www.sdfsyy.cn>

Address: No. 66, Kunming Road, Economic

Development Zone, Linyi, Shandong

Tel: 0539-8785865 Website: <https://www.sdfsyy.cn>



SDFS

富盛液压

农业机械 | AGRICULTURAL MACHINERY



变速箱阀组

TRANSMISSION VALVE BANK



应用于300马力以上拖拉机动力系统变速箱和PTO解决方案,在可靠性、效率、性能、排放合规性、燃油经济性和系统模块化方面满足高标准要求。

As a transmission and PTO solution for tractor powertrains over 300 HP, it can meet the high standards in all aspects, including reliability, efficiency, performance, emissions compliance, fuel economy, and system modularity.

电控转向阀组

ELECTRIC CONTROL STEERING VALVE BANK



农机电控转向阀组适用于农机变量液压转向系统,可通过远程电控与自动驾驶控制进行农机驾驶的无人化。

工作原理及技术特点:通过插装阀组的优化集成,可实现电比例控制转向平稳,控制精准。

The electric control steering valve bank is suitable for the variable hydraulic steering system in agricultural machinery to empower the unmanned driving of the machinery through remote electric control and automatic navigation control.

Working principle and technical features: Through the optimal integration of cartridge valve banks, it can achieve electric proportional control to enable smooth steering and accurate control.

高空作业车 | AERIAL WORK PLATFORM



主控制阀组

MAIN CONTROL VALVE BANK

曲臂平台控制阀组主要控制工作台摆动和调平,转台回转,主臂伸缩 飞臂升降等功能。

The articulated boom platform control valve bank mainly controls the swing and leveling of the work platform, the rotation of the turntable, the stretching out and drawing back of the boom, the rising and dropping of the jib, etc.

技术特点 Technical features

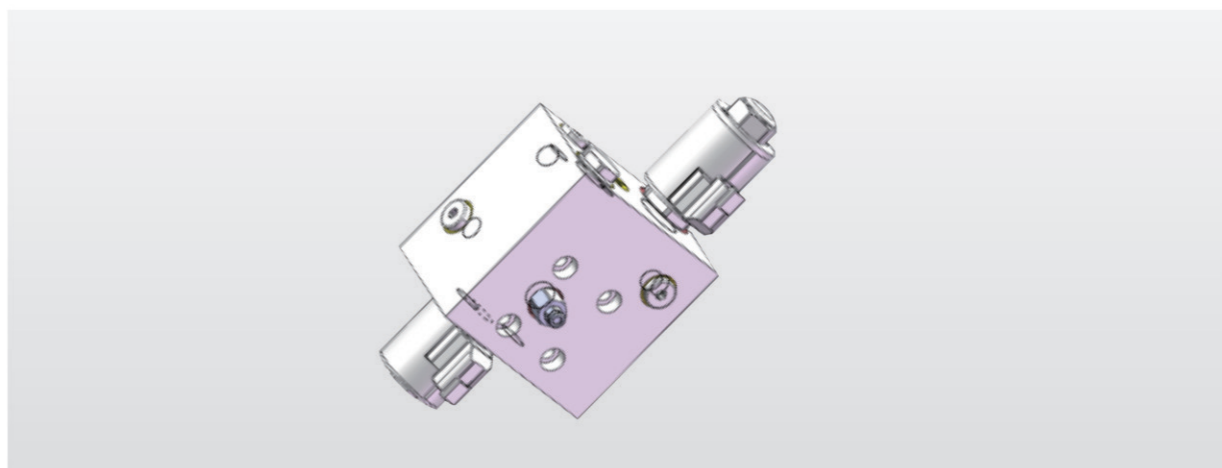
阀组采用7075铝合金集成进口品牌螺纹插装阀,使用寿命长,结构可靠。
Made of 7075 aluminum alloy and integrated with screw-in cartridge valves of imported brand, the product has long service life and reliable structure.

产品参数 Product parameters

额定压力250bar; 额定流量12L/min
Rated pressure: 250bar; rated flow: 12L/min

变幅控制阀组

LUFFING CONTROL VALVE BANK



变幅控制油缸阀组用于控制变幅油缸的升降动作,可实现变幅速度的连续调节。

The luffing cylinder valve bank is used to control the lifting action of the luffing cylinder to enable the continuous regulation of the luffing speed.

技术特点 Technical features

变幅油缸的下降速度比例调节不受负载变化的影响,保证平台的平稳性和位置的精确性。
The proportional control of the falling speed of the luffing cylinder will not be affected by load changes, so the platform stability and the positioning accuracy can be ensured.

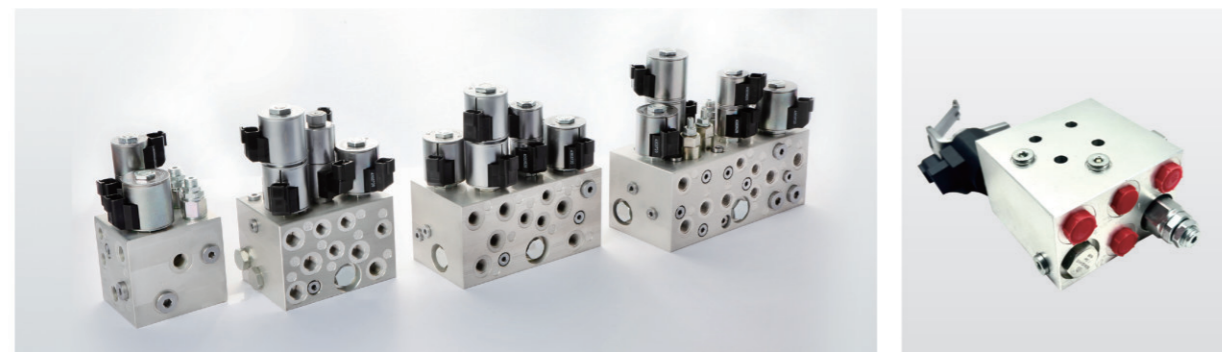
剪叉平台控制阀组 | SCISSOR LIFT PLATFORM VALVE BANK

高空作业平台升降专用阀组,用于控制下部油缸的升降动作及平台的位置,可实现下降速度比例连续可调。

技术特点:压力补偿保证下降速度的平稳;极低的沉降量。

As a lifting valve bank exclusive for aerial work platforms, it is used to control the lifting action of the lower cylinder and the platform position, which can realize the continuous proportional control of the falling speed.

Technical features: The pressure compensation can ensure the steady falling speed to achieve a very low falling height.



额定压力 Rated pressure	240MPa
额定流量 Rated flow	20L/min
电压 Voltage	20VDC±15% DEUTSCH DT04-2P
阀体材质 Body material	铝 AL7075 (Aluminum AL7075)

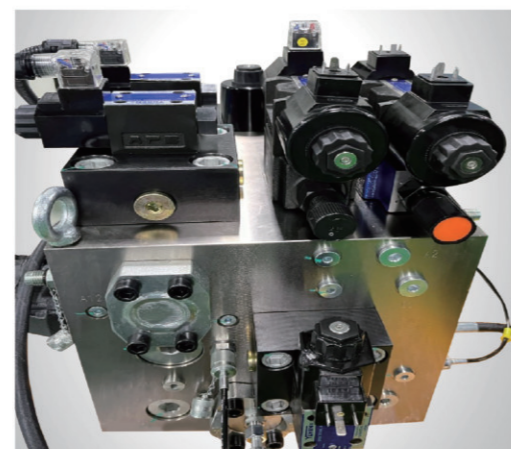
工程机械 | SCISSOR LIFT TRAVELLING CONTROL HYDRAULIC VALVE SERIES

新能源矿山车举升阀组

NEW ENERGY MINING TRUCK LIFT VALVE BANK

为客户定制的150T新能源矿卡用整车液压系统控制阀组,实现举升合流、泵控制等动作;具有结构紧凑,耐压高,液压传动能量密度高等特点。

As a whole-vehicle hydraulic system control valve bank customized for 150T new energy mining trucks, it features a compact structure, high withstand pressure, and high hydraulic transmission energy density and can achieve such actions as lift confluence and pump control.



额定压力 Rated pressure	35MPa
额定流量 Rated flow	700L/min
阀体材料 Body material	一体锻件45#(One-piece forged part 45#)

挖掘机先导油源系列 | EXCAVATOR PILOT OIL SUPPLY SERIES

插装式溢流阀、减压阀,结构紧凑;多种组合形式,电磁阀电压,数量根据要求配置;进油配有过滤器,保证使用稳定可靠性。

Through the use of cartridge overflow and relief valves, the excavator pilot oil supply series is compact in structure. It supports multiple combination options and allows the voltage and number of solenoid valves to be configured depending on the requirements. Its oil inlet comes with a filter to ensure the service stability and reliability.

公称通径 Nominal diameter	06
额定流量 Rated flow	20L/min
最大压力 Maximum pressure	35MPa
蓄能器容量 Energy accumulator capacity	0.32-1.5L
电磁阀电压 Solenoid valve voltage	14VDC、28VDC
阀体材料 Body material	球铁QT500(Ductile iron QT500)



先导油梭阀组 | PILOT OIL SUPPLY VALVE BANK



用于挖机先导逻辑控制,配合挖机先导手柄实现对主控阀的控制。

It is used for the excavator pilot logic control and can achieve the main control valve control together with the excavator pilot handle.

技术特点 Technical features	通过集成梭阀式设计,使控制管路更加简化。体积小,经久耐用。 Based on the integrated shuttle valve design, its control pipeline is more simplified, so it is compact in size and durable.
-------------------------	---

背压阀系列 | BACK PRESSURE VALVE

背压阀适用于挖机回路背压控制。 The back pressure valve is used for the back pressure control of the excavator oil return loop.

技术特点 Technical features

具有不同规格可选,配置不同吨位挖机。流量大,压力稳定的优点。
With different specifications optional, it is suitable for the excavators of different tonnage, and it features large flow and stable pressure.



液压锁 | HYDRAULIC LOCK SERIES

双向液压锁适用于起重机、轮挖支腿等领域。 The two-way hydraulic lock can be used in cranes, wheel excavator outriggers, etc.

技术特点 Technical features

多面积比可选,开启比大,节能环保的优点;可靠的单向阀芯,零泄漏,整阀寿命更长。
It features multiple optional area ratios, large opening ratio, energy economy, and environmental protection; its reliable one-way valve core can avoid leakage and extend the life span of the whole valve.



分体法兰 | SPLIT FLANGE

分体法兰是法兰的一种,又称对开法兰,主要用于液压机械中常和接管配套使用。压力分:轻型和重型,即:3000PSI、6000PSI两种,制造标准: 国标JB/ZQ4187,美标SAE J518,国际标准ISO6162、ISO6164。

Split flange is a kind of flange, also known as split flange, mainly used in hydraulic machinery and takeover supporting the use. Pressure: light and heavy: 3000PSI, 6000PSI two, manufacturing standards: GB JB / ZQ4187, American standard SAE J518, international standard ISO6162, ISO6164.



适用压力 Applicable pressure

16-60MPa

材质选用 Material selection

45#锻、42CrMO锻 45 # forging, 42CrMO forging

产品应用 Product application

主要应用于工程机械、矿山机械、农林机械、高空作业平台等领域。
Mainly used in engineering machinery, mining machinery, agricultural and forestry machinery, high-altitude operation platform and other fields.

硬管接头 | PIPE FITTINGS

硬管接头是用于油管与油管、油管与液压元件间的连接的重要部件。硬管连接有多种方式,如扩口式、卡套式、焊接式和法兰式,产品选用 DIN、ISO、SAE、JIS等标准。

The hard pipe joint is an important part for the connection between the oil pipe and the oil pipe and the oil pipe and the hydraulic element. There are many ways of hard pipe connection, such as flaring type, sleeve type, welded type and flange type, products use DIN, ISO, SAE, JIS and other standards.



适用压力 Applicable pressure

16-60MPa

材质选用 Material selection

碳钢(20#、35#、45#) 不锈钢(304 316) Carbon steel (20#, 35#, 45#) Stainless steel (304, 316)

产品应用 Product application

主要应用于工程机械、矿山机械、农林机械、高空作业平台等领域。
Mainly used in engineering machinery, mining machinery, agricultural and forestry machinery, high-altitude operation platform and other fields.