



# UNDERCARRIAGE PARTS



## 傲捷实业 (ALLPOWER MACHINERY)

- 福建奥铂机械制造有限公司
- 厦门傲捷进出口有限公司
- 厦门傲捷投资管理有限公司

网址: [www.allpower-machinery.com](http://www.allpower-machinery.com)  
[www.aopo-machinery.com](http://www.aopo-machinery.com)  
 邮箱: [sales@allpower-machinery.com](mailto:sales@allpower-machinery.com)  
 总部: 厦门市湖里区翔云-路102号云泰国际大厦A栋601



## ALLPOWER MACHINERY

Always Adhere To Our Beliefs-Brilliant Business For You

奥铂机械 销轴专家



## PIN & BUCKET

[www.allpower-machinery.com](http://www.allpower-machinery.com)  
[www.aopo-machinery.com](http://www.aopo-machinery.com)



# CATALOG

## 目录

### Enterprise Introduction | 企业介绍

- 1. Company profile / business environment 01  
企业简介/企业环境

### Product Introduction | 产品介绍

- 1. PIN 04  
销轴
- 2. BUSHING 06  
轴套
- 3. TRACK GUARD/LINK/H LINK 07  
护链架/连杆/工字架
- 4. BUCKET 09  
挖斗
- 5. WORKSHOP 12  
厂房
- 6. EXQUISITE CRAFTSMANSHIP 13  
精湛的工艺
- 7. TEAM 15  
团队
- 8. PRODUCT LIST 16  
产品目录
- 9. TRACK ROLLER/BOTTOM ROLLER 17  
支重轮
- 10. TOP ROLLER/UPPER ROLLER 19  
托链轮
- 11. SPROCKET/SEGMENT 21  
驱动轮/齿块
- 12. IDLER 23  
引导轮
- 13. TRACK LINK 24  
链条
- 14. EXHIBITION 26  
展会
- 15. GLOBALIZATION 27  
全球化

# COMPANY PROFILE

企业简介/企业环境

Since ALLPOWER MACHINERY founded in 2000 , we keep moving to pursue better quality and service . By now , we have invested and owned two factories, ( the one is for buckets, pins, H links, track guards ;the other for undercarriage parts, such as rollers, sprockets,idlers,track links, etc. ).

傲捷实业自2000年成立以来, 不断追求更好的质量和服务。截止目前, 我们已经投资并拥有两个工厂, (一个专业生产挖斗、销轴、工字架、护链架;另一个生产底盘件, 如支重轮、托链轮、驱动轮、引导轮、链轨总成等)。



Always adhere to our beliefs  
--Brilliant Business For You  
That's our logo BBY

我们始终坚持我们的信念  
--为你的事业添光彩  
这就是BBY商标的含义



Our two factories also have more than 20 years history in this industry. We specialized in manufacturing excavator & bulldozer parts which are applicable to most brands, such as Caterpillar, Komatsu, Hitachi, Hyundai, Volvo, Doosan(Daewoo), Kobelco, Kato,Sumitomo,JCB etc. As a professional manufacturer, we have our own R&D department which can develop new parts for you , according to product specifications and drawings.

我们的两个工厂在工程机械配件制造领域有超过20年的历史。专注生产适用于多种品牌的挖掘机和推土机配件, 品牌包括卡特彼勒、小松、日立、现代、沃尔沃、斗山(大宇)、神钢、加藤、住友、杰西博等。作为专业制造商, 我们自己的研发部, 可以根据客户提供的产品尺寸和图纸研发生产新的配件。

# COMPANY PROFILE

## 企业简介/企业环境

ALLPOWER'S sales headquarter in Xiamen is in charge of oversea market. With the development of 20 years, our products are sold to more than 30 countries & regions from worldwide, also enjoy good reputation among our customers. No matter where you are from, we ALLPOWER always try our best to achieve mutual benefit with high standard & stable quality, but still competitive price.



傲捷实业的销售总部在厦门，负责海外市场。经过20年的发展，我们的产品已销往30多个国家和地区。获得顾客们一致好评。不管你来自哪里，我们都会以高质量稳定的品质及有竞争力的价格，尽我们最大的努力和客户实现共赢。



- All our products have been approved by ISO9001 and ISO14001.
- All the key process will not be canceled to reduce cost.
- All parts are under strict quality control & test.
- 我们的产品通过ISO9001和ISO14001认证
- 我们不会为了缩减成本而取消关键的生产环节
- 我们所有的产品都通过严格的质量控制和检测



# 1 / PIN | 销轴

## OUR ADVANTAGE

- Real quenching process to ensure core hardness with at least HRC20 or up
- Surface hardness with HRC56-60
- Medium frequency heat treatment instead of high-frequency to ensure the thickness of hardness more than 1.8mm
- Longer wear life
- Excellent surface plating, including hard Chrome plate can be chosen
- Material:40CR or 42CRMO material can be chosen



**产品优势:**

- 真正的调质处理使轴的芯部硬度达到HRC20或更高
- 表面硬度HRC56-60
- 使用中频热处理，而不是高频热处理，保证轴的表面硬化层深度大于1.8mm
- 拥有更长久的耐磨
- 良好的表面处理工艺，可生产表面镀硬铬的轴
- 原材料：40CR or 42CRMO





### WEARLESSNESS

For pins, after quenching and tempering, then do surface intermediate frequency treatment, to assure the enough inside hardness and outside wearlessness.

### 耐磨性

对于销轴, 调质淬火后, 进行表面中频淬火处理, 保证它具有足够的硬度和耐磨。



## 2 / BUSHING | 轴套

For bushing, we do heat treatment for both internal and external surface after thermal refining, to guarantee the reasonable inside hardness and outside resistance.

对于轴套来说, 调质后我们对轴的内外表面进行热处理, 保证产品内部的硬度和外部的耐磨。

### 产品优势:

- 严格的热处理过程
- 良好的抗破裂性能
- 拥有持久的耐磨



### OUR ADVANTAGE

- Strict heat treatment process
- Excellent cracking-resistance
- Longer wear life

# 3 / TRACK GUARD LINK/H LINK

| 护链架/连杆/工字架

## OUR ADVANTAGE :

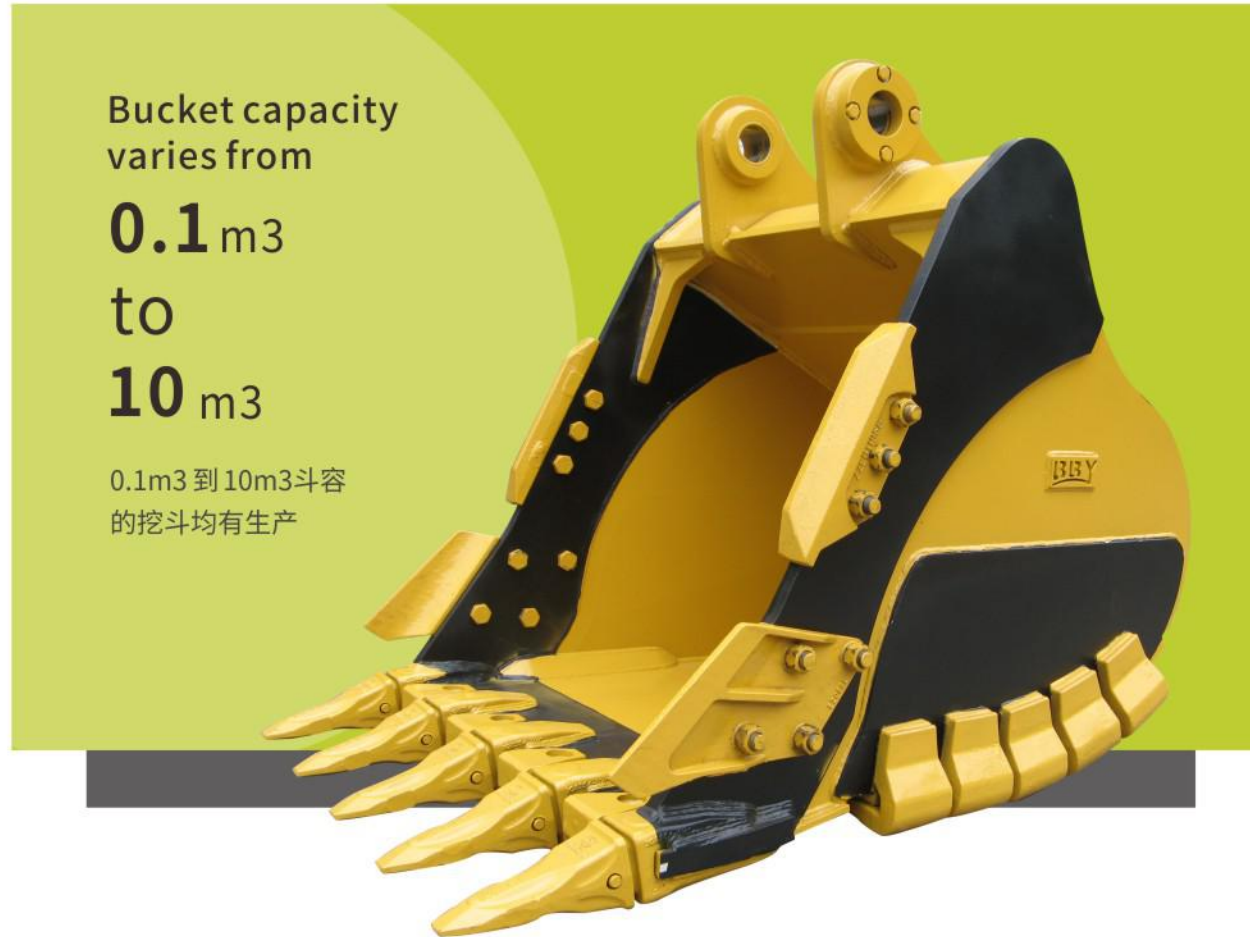
- Excellent structural design
- Reasonable bending key points
- Reasonable structure to ensure mechanical properties and toughness
- Good painting and appearance



## 产品优势:

- 杰出的结构设计
- 合理折弯关键部位
- 合理的结构保证良好的机械性能和韧性
- 良好的喷漆和漂亮的外观





Bucket capacity varies from

**0.1 m<sup>3</sup>**  
to  
**10 m<sup>3</sup>**

0.1m<sup>3</sup> 到 10m<sup>3</sup> 斗容的挖斗均有生产

## 4 / BUCKET | 挖斗

Standard bucket, heavy duty bucket and rock bucket are available in ALLPOWER, suitable for almost all types of excavators, bulldozers and loaders.

We select high quality steel materials (such as Q345B, NM400, Swedish HARDOX), scientifically design the whole production process from shapes, welding quality control, guarantee structural strength and compressive features.

标准斗、加强斗和岩石斗可供选择, 适用于大部分的挖掘机、推土机和装载机。

挖斗使用精选高质量钢材 (如 Q345B, NM400, Swedish HARDOX), 科学的斗形设计, 严格的焊接质量把控, 保证挖斗的结构强度和抗压缩性能。



## BUCKET | 挖斗

PRODUCTION CAPACITY  
生产能力

Bucket capacity varies from 0.1m<sup>3</sup> to 10m<sup>3</sup>, according to different construction environment and customer demand.

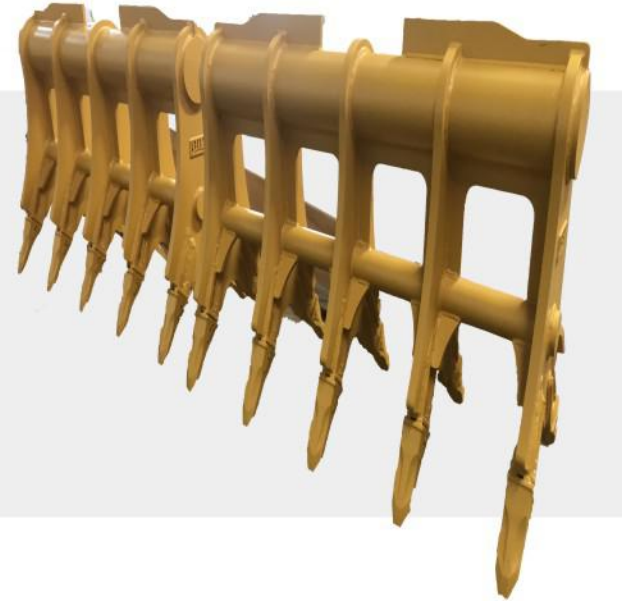
0.1m<sup>3</sup> 到 10m<sup>3</sup> 斗容的挖斗均有生产, 也可根据客户不同的工况和需求生产。



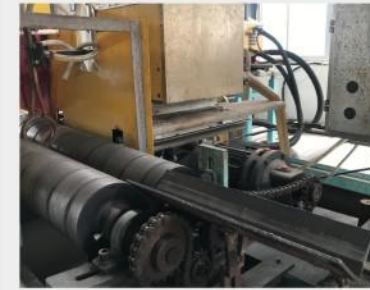


产品优势:

- 独立杰出的结构设计
- 充分保护挖斗主要工作区域
- 快速安装和拆卸
- 改善工作渗透能力
- 装配使用著名品牌的斗齿和齿座
- 更长的使用寿命
- 降低工作负荷, 提高工作效率



5 / WORKSHOP | 厂房



OUR ADVANTAGE

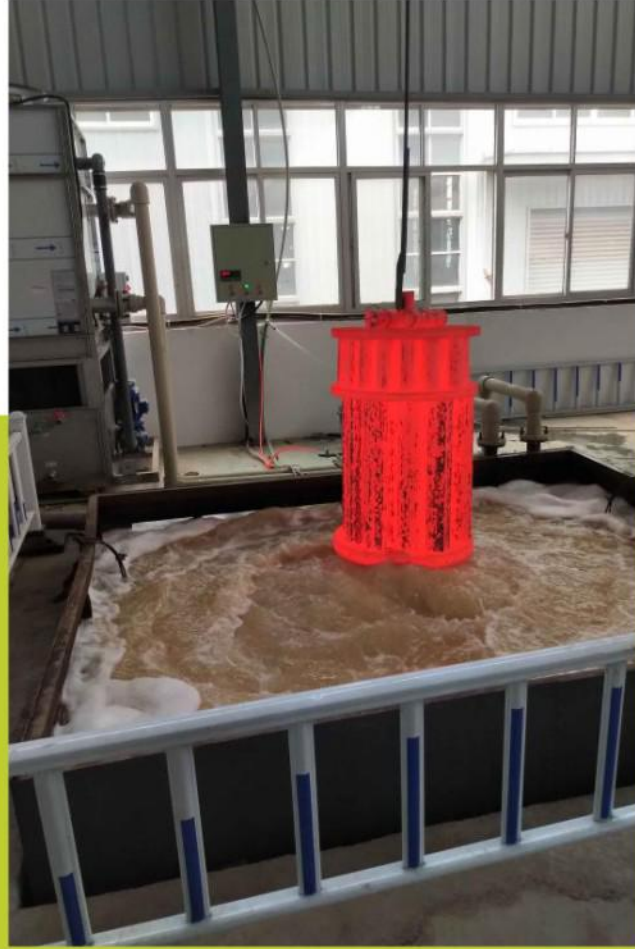
- Independent and excellent structural design
- Full protection of bucket base edges
- Fast removal and installation
- Improved penetration
- Famous adapters and tooth-points brands
- Longer wear life
- Trusted buckets



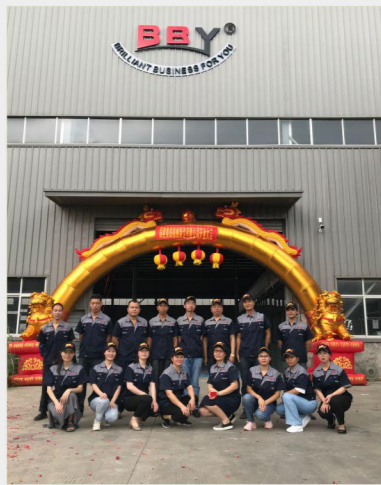


# 6 / EXQUISITE CRAFTSMANSHIP

| 精湛的工艺



# 7 / TEAM | 团队



# 8 / PRODUCT LIST | 产品目录

| BULLDOZER              |  |
|------------------------|--|
| <b>CATERPILLAR</b>     | D3C,D4C,D4D,D4E,D4H,D5C,D5H,D6D,D6C,D6H,D6M, D6R,D7E,D7F,D7G, D8K,D8N,D9R,D9H,D9N ETC.   |
| <b>KOMATSU</b>         | D20,D21P,D30/31,D31P,D40,D41P,D50,D50A-17, D60/ D65,D65A,D65E-12,D65EX,D80,D85,D85A-12D85ESS-1/D85A-18,D155, D155AX,D155A-5,D275,D355,D375 ETC.  |
| EXCAVATOR              |  |
| <b>CATERPILLAR</b>     | CAT215,CAT215DLC,CAT225,CAT225DLC/BLC,CAT235, CAT235LC,CAT307,CAT307B,CAT311,CAT312,CAT312B,CAT315L/ CAT317,CAT318BL,CAT320,CAT320D,CAT320C,CAT320BL, CAT322,CAT324/D,CAT325B/C/LN,CAT330B/D/LN,CAT345BL, E45,E55,E70,E110,E120,E140,E180,E200,E240,E300, E450,E350, E374,E375,E385,E390,CAT955,ETC.   |
| <b>KOMATSU</b>         | PC10,PC25,PC30,PC40,PC40-1/8,PC45,PC50,PC50-2/3, PC50-UU2,PC55,PC60,PC60-1/3/5/6/7,PC71,PC80,PC100,PC100-3/5, PC120,PC120-1/2/3/5/6,PC120LC-6,PC130,PC150-1/5, PC200,PC200-1/2/3/5/6/7/8,PC220-3/6/7,PC240-3/5,PC240-6,PC280-3, PC300,PC300-3/5/6,PC400,PC400-3/5/6/7, PC450-6, PC650, PC650-5,PC650-8,PC750,PC800,PC1250, ETC.  |
| <b>HITACHI</b>         | EX30,EX50,EX55,EX60,EX60-1,ZX70,EX60-2/3, EX60-5, EX90,EX90-1,EX100,EX100-1/2/3/5,EX100M,EX100M-5,EX120,EX120-1/2/3/5, ZX120,EX130H-5,EX150,EX150-1,ZAXIS180,EX200-1/2/3/5, FH200/EX210,FH220-3,ZAXIS200/210,ZX200LC,EX220, EX220-1/5,ZAXIS225, ZX230,FH330,EX270,EX300,EX300-1/2/3/5,EX300LC-3/5, ZX330,ZX350,EX330,EX330-3,EX350LC-3,ZX350LC-3,EX370-5,FH400, EX400-1/2/3/5, EX450,EX450LC-3,ZX450,ZAX470, ZAX480,EX500LC,EX550,EX650,EX700,EX800,ZAX870,EX1100,EX1200-5, ETC. |
| <b>HYUNDAI</b>         | R55,R55-7,R60,R60-5/7,R80,R110-7,R130,R140LC-7/9, R200/B,R210,R210LC-7,R210LC-9,R220,R220-5,R220-9,R280, R290,R290LC-7,R320LC-7,R350,R360,R420,R450LC, R485,R505,R800,R964,R974,R984,ETC.  |
| <b>DOOSAN (DAEWOO)</b> | DH07,DH08,DH55,DH80,DH130,DH150,DH180,DH220, DH220-3/5,DH220LC,DH225LC-8,DH250,DH280,DH280-1/2/3, DH300,DH300-5,DH320,DH330-3, DH360,DH400,DH500, DX140LC,DX225/225DLC,DX340,S220LCV,S225LCV,ETC.  |
| <b>KATO</b>            | HD250, HD280,HD400-1, HD400-2, HD400-5,HD450, HD700, HD770, HD800,HD820, HD820-3,HD909, HD1250, HD1430, HD1880, ETC.   |
| <b>SUMITOMO</b>        | SH60/SH65,SH75-3,SH100,SH100A3,SH120,SH120-3, SH160, SH200, SH200-3,SH210-5,SH280,LS2800FJ1/2,SH220,SH260, SH300,SH330,SH340, SH580,ETC.   |
| <b>KOBELCO</b>         | SK07, SK12, SK21,SK55,SK60, SK60M-3/5,SK100,SK120, SK120-5,SK150M,SK200,SK200-3/5/6,SK210,SK210LC-8,SK220, SK230,SK250,SK270/LC,SK300, SK300-3,SK320,SK330, SK330LC-8,SK350,SK450 ETC.   |
| <b>VOLVO</b>           | EC55,EC55B,EC140,EC210/EC210LC/EC210B,EC210-7, EC240, EC290, EC290BLC,EC330,EC360,EC360BLC,EC450,EC460, EC700,ETC. EC480,  |
| <b>SAMSUNG</b>         | SE210,SE210LC-2,SE280,SE280LC-2,SE350,SE350LC-2, SE450LC-2,ETC.  |
| <b>OTHERS</b>          | JS140,JS160,JS200,JS220,JS240,JS330,CX55,CX135, CX160,CX210,CX290,CX350,CX800,SD16,SD22,SD32,LG60, LG922D, LG950,LG970,SY135,SY215,SY425,SY465,SY700 /800,XE215,XE230,XE260,SWE50,SWE60,SWE70,YC35,YC60,YC85, U60,UH083,VIO75,YANMA55,YANMA75,ED3,FR65,FR85, IHISCE50/60,JBT60,JD690L,T90,T120,T140,T140-1,T170,TB171,TB175, TD15C,MS110,MS110-3/5,MS120-8,,MS180-8,NS120, CLG2000,ZY200,,MS240/MS270,FINLAND550,FINLAND660,K907-2, XCG460,XCG700,ETC. BD2G,                     |

FOR ADDITIONAL NON-LISTED MODELS,PLEASE CONTACT US WITHOUT ANY HESITATION.



# 9 / TRACK ROLLER/BOTTOM ROLLER

## | 支重轮



我司支重轮体是由两个锻造形成的半轮体焊接而成的。良好的轮体轨面的硬度和硬化层深度保证支重轮的的质量和使用寿命。我们的材质和焊接质量能得到保证的。

Our track rollers are composition of two pieces of forged semi-roller. The quality and service life of the products of roller are guaranteed by the hardened face with depth of roller body. Our materials and welding effect are well guaranteed.



### Heat Treatment Technical Data For BBY Track Roller:

Track roller shell:

- Surface quenching HRC 54-60
- Track face hardening depth 5mm-7mm
- Corner hardening depth more than 2mm



### BBY 支重轮热处理后技术参数:

支重轮轮体:

- 轮体表面淬火硬度:HRC 54-60
- 轮体轨面硬化层深度:5-7mm
- 轨面拐角硬化层深度超过2mm

The dimensional accuracy of products is guaranteed by processing of NC lathes and program controlled machines. In the process of assembly of roller, the expected and reliable sealing and lubricating rotation of roller are guaranteed by testing of air pressure tightness and load-bearing rotation.

使用的的数控车床和程序控制机器保证了产品的尺寸精确度。在支重轮装配过程中,严格的产品气密性测试和试运行测试保证了支重轮达到最理想可靠的密封性和润滑效果。

# 10/ TOP ROLLER/UPPER ROLLER

## | 托链轮



Best selected sealing and lifelong lubrication design enable our top roller to have longer working life and perfect performance.



选择优质的密封件和终身润滑设计使我们的拖链轮具有更长的使用寿命和良好的工作性能。



BBY 托链轮热处理后技术参数:

托链轮轮体:

- 轮体表面淬火硬度:HRC 54-60
- 轮体轨面硬化层深度:推土机拖链轮5-7mm, 挖掘机拖链轮4-5mm
- 轨面拐角硬化层深度超过1.5mm



Heat Treatment Technical Data For BBY Top Roller:

Top roller shell:

- Surface quenching HRC 54-60
- Face hardening depth(bulldozer 5-7mm,excavator 4-5mm)
- Corner hardening depth more than1.5mm

Our sprockets have a higher resistance against a fatigue and have a longer service life.

我们驱动轮具有更高的耐磨性和更长的使用寿命。



The feature is that all tooth of sprocket are heated at the same time and have a uniform hardness up to 7 mm from the tooth tip to make it the most stable.

驱动轮的热处理采用整体淬火工艺,使整个驱动轮齿圈具有均匀的硬度和达到7mm的硬化层深度,保证最稳定的质量。

# 11 / SPROCKET/SEGMENT

## | 驱动轮/齿块



### OUR ADVANTAGE

- Proper and effective quenching hardening and tempered and spray hardening
- Exceed the most stringent machine performance
- With complete models and types from 6 to 60 tons



#### 产品优势:

- 具有良好有效的淬火,调质和喷雾淬火。
- 杰出的机械性能。
- 从6吨到60吨机型的驱动轮我们一应俱全。



#### Heat Treatment Technical Data For BBY Sprocket/Segment :

- Quenching surface HRC 48-55
- Teeth hardening depth: Top 11mm to 13mm, Bottom 4mm to 6mm

#### BBY 驱动轮/齿块热处理后技术参数:

- 驱动轮/齿块表面淬火硬度:HRC 48-55
- 驱动轮/齿块硬化层深度:顶部11-13mm,底部4-6mm

# 12 / IDLER | 引导轮

## OUR ADVANTAGE

- Best selected seals group, shaft and bushings.
- Proper induction hardening and tempered and spray hardening.
- Exceed the most stringent machine performance.
- Casting or forging types included
- Assembly in clean room. Tightness test. Running test.

### 产品优势:

- 精挑细选的密封件, 轴和铜套。
- 恰当的感应淬火, 回火和喷雾淬火。
- 杰出的机械性能。
- 包括铸造和锻造两种类型。
- 在干净无尘车间组装, 严格的气密性测试和试跑



### Heat Treatment Technical Data For BBY Idler:

#### Idler shell:

- Surface quenching HRC 53-58
- Track face hardening depth 5mm to 7mm
- Corner hardening depth more than 2mm

### BBY 引导轮热处理后技术参数:

#### 引导轮轮体:

- 轮体表面淬火硬度: HRC 53-58
- 轨面硬化层深度: 5-7mm
- 轨面拐角硬化层深度超过2mm

# 13 / TRACK LINK | 链条



## OUR ADVANTAGE

- Using high strength, abrasion resistant steel with heat treatment, especially for track links which link pitch is larger than 190mm, we use the best material 35MnB.
- Using the material 20CrMo for track bushing, carburizing treatment both outside and inside, the hardness depth can be 2.5 to 3mm.
- For machining, we use the CNC controlled machines to guarantee dimensional tolerance.
- All the track slices must be flaw detected by flaw detector to eliminate unqualified track slice.
- Sealed and lubricated.
- Excellent oil retention and dirt exclusion.
- Excellent seal performance for extreme working conditions.
- Available in standard and heavy duty versions.
- Supplying complete chain models, with pitch ranging from 101 to 260mm.

# 13 / TRACK LINK | 链条



### 产品优势:

- 采用优质的锻钢材质, 尤其是190节距以上的产品, 均采用优质35MnB
- 链通材质采用20CrMo, 内外渗碳热处理, 表面硬化层深度达2.5---3mm
- 机加工采用CNC数控机床加工, 保证尺寸公差
- 所有链片均通过探伤仪探伤检验, 消除链片品质隐患
- 良好的密封和润滑性
- 优秀的润滑油持久性和防污性能
- 优良的密封性能, 适应各种恶劣的工作环境
- 标准型和加强型两种链条可供选择
- 链条型号广泛齐全, 链条节距可从101到260mm

TRACK LINK



# 14 / EXHIBITION | 展会

- .....
- 2022
- 2020
- 2018
- 2016
- 2014
- 2012
- 2010
- 2008
- 2006



AIMEX SYDNEY 2019



BAUMA CHINA 2018



CONEXPO LAS VEGAS 2017



BAUMA CHINA 2016



BAUMA CHINA 2014



BICES 2013



M&T EXPO BRAZIL 2012



EXCON INDIA 2011



BAUMA CHINA 2010



BAUMA GERMANY 2010



CANTON FAIR 2009



BAUMA CHINA 2008



CONMEX SHARJAH 2007



BAUMA CHINA 2006

# 15 / GLOBALIZATION | 全球化



G L O B A L I Z A T I O N