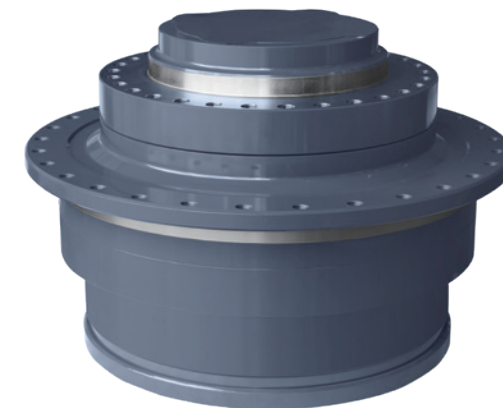




APMC 亚太传动

ENGINEERING MACHINERY
TRANSMISSION SOLUTIONS
工程机械传动解决方案

APMC
亚太传动



APMC 苏州亚太精睿传动科技股份有限公司
SUZHOU ASIA-PACIFIC INTELLIGENT TRANSMISSION TECHNOLOGY CO., LTD

☎ 0512-88189917

☎ 0512-88186188

✉ sales@szapmc.com

🌐 www.szapmc.com

☎ 215132

📍 苏州市相城区黄桥工业园二区兴旺路4号
No. 4, Xingwang Road, Zone 2, Huangqiao Industrial Park, Xiangcheng District, Suzhou City





Asia-pacific Transmission was established in April 2002, specializing in the research and development, design, manufacturing, and sales of core components and transmission systems in the field of heavy-duty transmission. The company is customer-oriented and supported by lean manufacturing technology, providing deep services to downstream customers in wind power, engineering machinery, oil and gas, metallurgy, mining and other fields.

In the construction machinery market, the company has designed and manufactured large tracked excavators with supporting walking devices, rotary and dump truck wheel edge devices, and other mechanisms. They have been successfully applied in batches for over 10000 hours on the client side and have been highly recognized by customers. They have achieved the goal of completely replacing imported products in China.

公司简介

COMPANY INTRODUCTION

亚太传动成立于2002年4月，专业致力于重载传动领域核心零部件及传动系统的研发、设计、制造和销售。公司以客户需求为导向，以精益制造技术为支撑，深度服务于风电、工程机械、油气、冶金、矿山等下游领域客户。

在工程机械市场，公司设计制造的大型履带式挖掘机配套行走装置、回转及自卸卡车轮边装置等机构，已成功通过客户端10000小时以上的批量应用，得到客户的高度认可，在中国实现了完全替代进口产品的目标。



发展历程
DEVELOPMENT
HISTORY

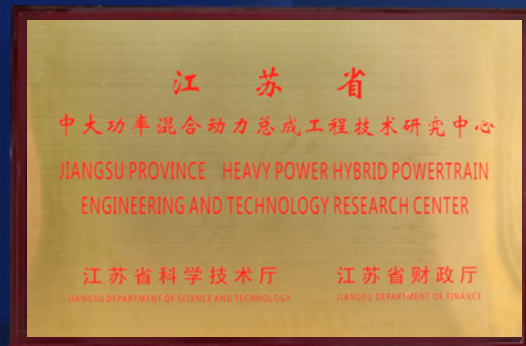
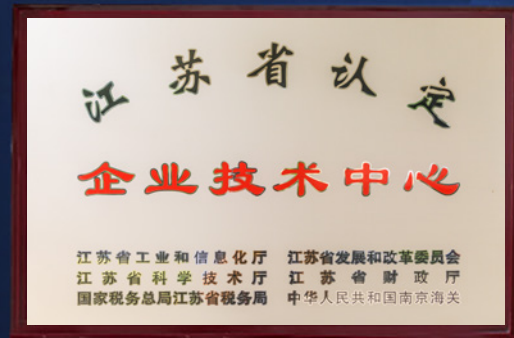
| | | |
|------|--|---|
| 2023 | 通过国家专精特新“小巨人”企业认定 获评“苏州市5G工厂”荣誉 获得GB/T23001/6两化融合体系认证，等级AAA | Recognized as a national specialized, refined, and innovative "little giant" enterprise Honored as "Suzhou 5G Factory" Obtained GB/T23001/6 certification for the integration system of industrialization and industrialization, with a level of AAA |
| 2022 | 股改完成，更名为苏州亚太精睿传动科技股份有限公司 通过“江苏省专精特新中小企业”认定 获批成立“苏州市工业设计中心” 获评“江苏省五星级上云企业” | The stock reform has been completed and renamed Suzhou Asia Pacific Jingrui Transmission Technology Co., Ltd Recognized as a "Specialized, Refined, Special, and New Small and Medium sized Enterprise in Jiangsu Province" Approved to establish "Suzhou Industrial Design Center" Awarded the title of "Jiangsu Province Five Star Cloud Enterprise" |
| 2021 | 获评“苏州市守合同重信用企业” 获评“苏州市智能示范车间” | Awarded the title of "Suzhou Contract abiding and Creditworthy Enterprise" Awarded the title of "Suzhou Intelligent Demonstration Workshop" |
| 2020 | 通过“两化融合管理体系”认证 获得苏州市质量奖 | Certified through the "Integration of Industrialization and Industrialization Management System" Received Suzhou Quality Award |
| 2019 | 成立江苏省中大功率混合动力总成工程技术研究中心 成立江苏省企业技术中心 通过GB/T 29490-2013知识产权管理体系认证 | Establishing Jiangsu Province Engineering and Technology Research Center for Medium and High Power Hybrid Powertrain Establishing Jiangsu Provincial Enterprise Technology Center Certified by GB/T 29490-2013 Intellectual Property Management System |
| 2018 | 成立苏州市外国专家工作室 | Establish Suzhou Foreign Expert Studio |
| 2017 | 大型履带式底盘行走减速机通过客户端10000小时的 批量应用，成功替代进口 | The large-scale tracked chassis walking reducer has successfully replaced imports through 10000 hours of batch application on the client side |
| 2016 | 成立苏州市企业技术中心 | Establishing Suzhou Enterprise Technology Center |
| 2015 | 成立企业博士后科研工作站（国家级） | Establishment of enterprise postdoctoral research workstation (national level) |
| 2014 | 成立苏州市高强度大型精密齿轮传动装置工程技术研究中心 | Establish Suzhou High Strength Large Precision Gear Transmission Equipment Engineering Technology Research Center |
| 2012 | 通过“国家高新技术企业”认定 | Recognized as a "National High tech Enterprise" |
| 2008 | 通过ISO9001质量体系认证 | Passed ISO9001 quality system certification |
| 2002 | 苏州亚太金属有限公司成立 | Suzhou Asia-pacific Metal Co., Ltd. Established |

企业荣誉
CORPORATE HONORS



APMC多次获得国内技术和企业创新奖项，
是国家认定的高新技术企业，
拥有多项国际创新资质。

APMC has won domestic technology and enterprise
innovation awards multiple times, and is a nationally
recognized high-tech enterprise with multiple
international innovation qualifications.



制造能力
MANUFACTURING
CAPABILITY



检测能力
DETECTION
CAPABILITY



产品介绍 PRODUCT INTRODUCTION

应用领域 Application

- 矿山机械、桩工机械、液压挖掘机械、工程起重机械
- Mining Machinery, Piling Machinery, Hydraulic Excavating Machinery, Construction Hoisting Machinery

工作条件 Operation Condition

- 最高输入转速 $\leq 4000\text{r/min}$
- 工作温度: $-40^{\circ}\text{C}\sim 40^{\circ}\text{C}$ (当环境温度低于 0°C 时, 起动前应预热润滑油至 10°C , 或采用低凝固点的润滑油, 如合成油)
- 适用于连续工作制或间断工作制, 并允许正反两向运转
- Max input ratio $\leq 4000\text{r/min}$
- Operation temp.: $-40^{\circ}\text{C}\sim 40^{\circ}\text{C}$ (Preheating oil to 10°C when ambient temperature $<0^{\circ}\text{C}$, or using lubrication oil of low-freezing, e.g. synthetic oil)
- Applicable to continuous and intermittent operation, enables forward and backward direction operation

润滑油&润滑方式 Lubrication & Lubrication Type

- **牌号、黏度:**
中负荷齿轮油L-CKC320或VG320,Mobil632(环境温度 $t>38^{\circ}\text{C}$)
中负荷齿轮油L-CKC220或VG220,Mobil630(环境温度 $t\leq 38^{\circ}\text{C}$)
符合GB 5903的规定
- **轴承:** 采用浸油润滑, 油品与齿轮润滑油品相同
- **热容量:** 浸油润滑, 工作平衡油温 $\leq 95^{\circ}\text{C}$
- **Brand, viscosity:**
L-CKC320 or VG320,Mobil632(ambient temp. $t>38^{\circ}\text{C}$)
L-CKC220 or VG220, Mobil630(ambient temp. $t\leq 38^{\circ}\text{C}$)
Complying with GB 5903
- **Bearing:** Using immersion lubrication, the oil used is the same as the gear lubrication oil
- **Thermal Capacity:** Immersion lubrication, working balance oil temperature $\leq 95^{\circ}\text{C}$



检验方法 Inspection Method

- **气密性检验:**
用空气增压泵向减速机箱体内注入压力为 0.055MPa 的空气, 稳压后保压 5min , 输入输出轴和各个机械结合面应无泄漏现象
- **Air Tight Test:**
Inject air with a pressure of 0.055MPa into the gearbox body using an air booster pump, maintain the pressure for 5 minutes after stabilizing, and there should be no leakage on the input and output shafts and various mechanical joint surfaces
- **空载试验:**
减速机在额定转速下, 正反方向各运行 1h (带有逆止器的产品仅单方向运行), 应符合以下要求:
 - 1.各连接件、紧固件不得松动
 - 2.各密封处、结合处不得渗油
 - 3.运转平稳正常, 无明显停滞、振动和异常声响
 - 4.减速机运转时产生的温升: 环境温度为 50°C 时, 油池最高的温度不应高于 85°C
- **No-load Test:**
The reducer should run for 1 hour in both directions at rated speed (products with backstop only operate in one direction) and meet the following requirements:
 - 1.All connections and fasteners shall not be loosened
 - 2.No leakage from all sealinas or connections
 3. Stable operation without apparent pause, vibration or abnormal voice
 4. The oil pool temperature shall be equal to or under 85°C when the ambient temp. reaches 50°C
- **负载试验: (新产品定型或批量抽检)**
 - 1.按额定输入功率, 在额定转速下, 逐级加载试验, 每级载荷试验达到油温平衡 1h 后再增加一级(约 20% 额定负荷), 直到平衡油温达到润滑油允许的最高温度为止
 - 2.其运转时应连续平稳, 不得有明显停滞、振动和异常声响
 - 3.减速机各运转过程各密封处不得有渗漏现象
 - 4.减速机运转时允许的最高油温: 矿物油一般为 90°C 时, 合成油可允许 100°C
- **Load Test:**
 - 1.According to the rated input power, load the test step by step at the rated speed. After each load test reaches the oil temperature balance for 1 hour, add another level (about 20% of the rated load) until the balance oil temperature reaches the maximum allowable temperature of the lubricating oil
 - 2.Its operation should be continuous and stable, without obvious stagnation, vibration, or abnormal sounds
 - 3.There should be no leakage at the sealing points during the operation of the reducer
 - 4.The maximum allowable oil temperature during the operation of the gearbox: when mineral oil is generally 90°C , synthetic oil can be allowed at 100°C

验收指标 Acceptance Indicators

- 温度: 各级温度平衡后不超过许用油温;
- 噪音: 无异常噪音, 各方向隔 1m 距离检测, 小于 85dB ;
- 振动: 振动按大纲要求, 一般不超过 3.5mm/s ;
- 清洁度: 负荷JB/T 7929中的K级;
- 紧固件无松动, 密封处无渗漏。
- Temperature: After temperature equilibrium at all levels, it shall not exceed the allowable oil temperature;
- Noise: No abnormal noise, detected at a distance of 1 meter in all directions, less than 85dB ;
- Vibration: According to the outline requirements, the vibration generally does not exceed 3.5mm/s ;
- Cleanliness: K level according to JB/T 7929 load;
- The fasteners are not loose and there is no leakage at the sealing area.

A PRECISE MANUFACTURER & CREATOR

从制造到创造

定制开发 Customized Solutions



- 产品结构采用专利技术，满足主机矿山及特殊作业要求
- 承载能力覆盖范围更广，功率梯度更小，可按要求匹配减速比
- 矿山实地调研，长期跟踪了解主机使用工况，助力主机设计优化
- 外形安装与原有机型互换，可根据特殊工况针对设计
- 产品供货周期短，快速响应客户订单需求

- Product structure adopts Patent Technology, fulfilling the requirements of mine and special operation for machinery
- Larger carrying capacity, smaller power gradient, matched ratio as required
- Long-term tracking on machine operating based on field research, optimizing with assistant machine
- Interchangeble same external dimensions, custom-designed for special operating conditions
- Short supply cycle, prompt response to customer needs

高可靠性 High Reliability



- 超长寿命: 耐碰撞，质保期长
- 工艺领先: 齿面全部硬化
- 密封质优: 质保内密封不漏油
- 外形安装与原有机型互换，可根据特殊工况针对设计
- 负载测试: 120% 扭矩超载实验
- 出厂测试: 出厂空载实验
- 设计精良: 结构与轴承特殊设计
- 品质稳定: 固化装配工艺，加强过程管控

- Ultra-long Service Life: strong crashworthiness, long warranty period
- Leading Process: all tooth surfaces hardened
- High Quality of Sealing: no leakage withine warranty
- Interchangeble same external dimensions, custom-designed for special operating conditions
- Load Testing: 120% torque overload test
- Inspection: 100% ex-factory no-load test
- Well-designed: Special design for structure and bearing
- Stay In Grade: established assembly process, strenthening process controlling

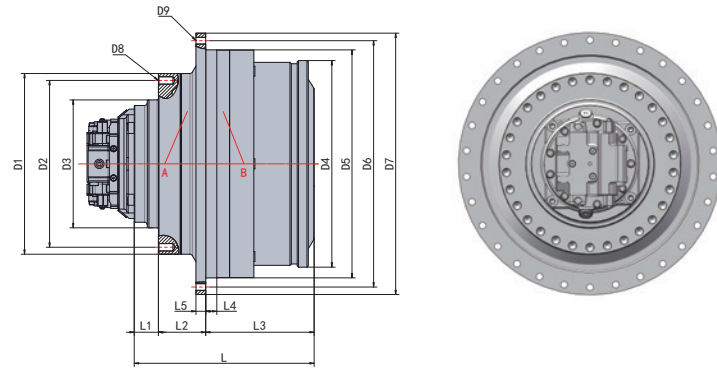
易于维护 Easy Maintenance



- 结构简单可靠
- 便于安装维护
- 易换油易保养
- 快速更换组件
- 维护结构简单
- 采用积木式结构(模块化)设计，在齿轮箱不拆机的情况下，打开端盖，即可更换第一级和第二级行星排零件
- 齿轮箱无易损件，仅需定期更新润滑油

- Simple and reliable structure
- Easy to install and maintain
- Easy to change oil and maintain
- Quick component replacement
- Simple maintenance structure
- Adopting a modular modular structure design, without disassembling the gearbox,
- Open the end cover to replace the first and second stage planetary gear parts
- The gearbox has no vulnerable parts and only requires regular updates of lubricating oil

挖掘机行走驱动 EXCAVATOR WALKING DRIVE



· 适用挖掘机履带行走驱动
Suitable for excavator track walking drive

| 型号 Type | 产品编码 Product code | D1 | D2 | D3 | D4 | D5 | D6 | D7 | D8 | D9 |
|----------------|----------------------|-----|-----|-----|-----|-----|-----|-----|--------|--------|
| YTXZ650-76-A | XZ00310 | 565 | 510 | 450 | 542 | 545 | 600 | 655 | 26-M24 | 30-M24 |
| YTXZ120T76-640 | BXZ60001 | 550 | 510 | 450 | 542 | 545 | 600 | 640 | 26-M24 | 30-M24 |
| FWWJ700-75-A | XZ00315 | 612 | 520 | 470 | 535 | 585 | 656 | 705 | 32-M24 | 32-M24 |
| YTXZ718-87-A | XZ00291 | 570 | 510 | 450 | 535 | 576 | 626 | 670 | 30-M24 | 30-M24 |
| FWWJ750-87-A | XZ00207 | 612 | 520 | 470 | 535 | 585 | 656 | 705 | 32-M24 | 32-M24 |
| YTXZ1808705 | XZ00267 | 612 | 520 | 470 | 520 | 585 | 656 | 705 | 32-M24 | 32-M24 |
| FWWJ900-100-A | XZ00180 | 652 | 550 | 470 | 580 | 670 | 737 | 790 | 30-M27 | 30-M27 |
| YTXZ220105390 | XZ00306 | 600 | 550 | 470 | 520 | 670 | 737 | 790 | 30-M27 | 24-M30 |
| YTSH950-100-C | XZ00287 | 652 | 515 | 450 | 535 | 610 | 680 | 735 | 24-M30 | 24-M30 |
| YTSY950-100-A | XZ00239 | 652 | 515 | 450 | 535 | 610 | 680 | 735 | 24-M30 | 24-M30 |
| YTTZ950-105-B | AJS00011 | 650 | 600 | 460 | 535 | 610 | 680 | 735 | 30-M30 | 24-M30 |
| YTXZ220T3100 | AJS00012 | 650 | 600 | 460 | 535 | 610 | 680 | 735 | 30-M30 | 24-M30 |
| YTXZ220T3120 | AJS00017 | 650 | 600 | 460 | 535 | 610 | 680 | 735 | 30-M30 | 24-M30 |
| YTXZ220T3135 | XZ00282 | 650 | 600 | 460 | 540 | 610 | 680 | 735 | 30-M30 | 24-M30 |
| YTXZ220T3141 | AJS00013 | 650 | 600 | 460 | 540 | 610 | 680 | 735 | 30-M30 | 24-M30 |
| YTWJ1200T3141 | XZ00322 | 650 | 600 | 460 | 743 | 820 | 886 | 940 | 30-M30 | 30-M27 |
| YTXZ305T3160 | AJS00018 | 685 | 630 | 530 | 660 | 610 | 685 | 740 | 28-M30 | 28-M30 |

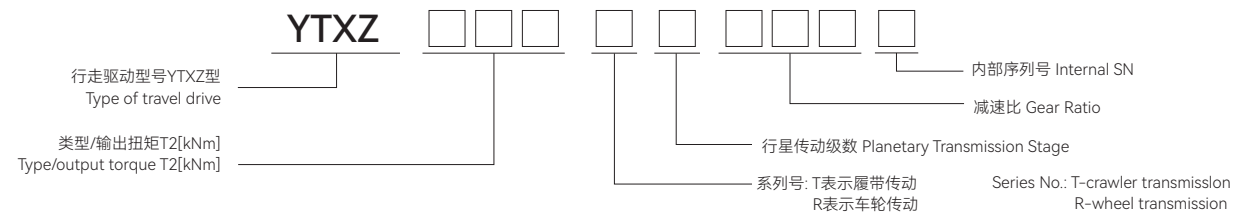
| 型号 Type | 产品编码 Product code | L | L1 | L2 | L3 | L4 | L5 | A+B(KN) | | 速比 Speed ratio | 重量 kg Weight | 应用挖机吨位 Application of excavator tonnage |
|----------------|----------------------|-------|-----|-----|-------|----|----|---------|------|-------------------|-----------------|--|
| | | | | | | | | | | | | |
| YTXZ650-76-A | XZ00310 | 538 | 46 | 180 | 312 | 40 | 52 | 494 | 494 | 76 | 630 | 60-65T |
| | | | | | | | | 1170 | 1170 | | | |
| YTXZ120T76-640 | BXZ60001 | 538 | 46 | 180 | 312 | 40 | 52 | 494 | 494 | 76 | 600 | 60-65T |
| | | | | | | | | 1170 | 1170 | | | |
| FWWJ700-75-A | XZ00315 | 543 | 46 | 150 | 347 | 30 | 48 | 600 | 600 | 75 | 780 | 70-80T |
| | | | | | | | | 1365 | 1365 | | | |
| YTXZ718-87-A | XZ00291 | 551 | 46 | 170 | 335 | 28 | 35 | 600 | 600 | 87 | 750 | 70-80T |
| | | | | | | | | 1365 | 1365 | | | |
| FWWJ750-87-A | XZ00207 | 543 | 46 | 150 | 347 | 30 | 48 | 600 | 600 | 87 | 780 | 70-80T |
| | | | | | | | | 1365 | 1365 | | | |
| YTXZ1808705 | XZ00267 | 549 | 46 | 150 | 353 | 30 | 48 | 600 | 600 | 87 | 780 | 70-80T |
| | | | | | | | | 1365 | 1365 | | | |
| FWWJ900-100-A | XZ00180 | 625.5 | 36 | 183 | 406.5 | 30 | 48 | 612 | 1127 | 100 | 950 | 95-100T |
| | | | | | | | | 1560 | 2366 | | | |
| YTXZ220105390 | XZ00306 | 608 | 50 | 183 | 375 | 28 | 48 | 612 | 1127 | 105 | 960 | 95-100T |
| | | | | | | | | 1560 | 2366 | | | |
| YTSH950-100-C | XZ00287 | 583 | 33 | 200 | 350 | 60 | 49 | 870 | 870 | 105 | 960 | 95-100T |
| | | | | | | | | 2266 | 2266 | | | |
| YTSY950-100-A | XZ00239 | 583 | 33 | 200 | 350 | 60 | 49 | 870 | 870 | 105 | 950 | 95-100T |
| | | | | | | | | 2266 | 2266 | | | |
| YTTZ950-105-B | AJS00011 | 622 | 87 | 185 | 350 | 60 | 55 | 870 | 870 | 105 | 980 | 95-100T |
| | | | | | | | | 2266 | 2266 | | | |
| YTXZ220T3100 | AJS00012 | 627 | 87 | 185 | 355 | 60 | 55 | 870 | 870 | 100 | 970 | 95-100T |
| | | | | | | | | 2266 | 2266 | | | |
| YTXZ220T3120 | AJS00017 | 627 | 87 | 185 | 355 | 60 | 55 | 870 | 870 | 120 | 970 | 95-100T |
| | | | | | | | | 2266 | 2266 | | | |
| YTXZ220T3135 | XZ00282 | 630 | 87 | 170 | 373 | 36 | 40 | 870 | 870 | 135 | 970 | 95-100T |
| | | | | | | | | 2266 | 2266 | | | |
| YTXZ220T3141 | AJS00013 | 630 | 87 | 170 | 373 | 36 | 40 | 870 | 870 | 141 | 970 | 120-135T |
| | | | | | | | | 2266 | 2266 | | | |
| YTWJ1200T3141 | XZ00322 | 647 | 87 | 170 | 390 | 40 | 35 | 612 | 1127 | 141 | 1450 | 120-135T |
| | | | | | | | | 1560 | 2366 | | | |
| YTXZ305T3160 | AJS00018 | 679.5 | 165 | 125 | 389.5 | 45 | 65 | 1220 | 1220 | 160 | 970 | 150-165T |
| | | | | | | | | 2295 | 2295 | | | |



从制造到创造
A Precise Manufacturer & Creator

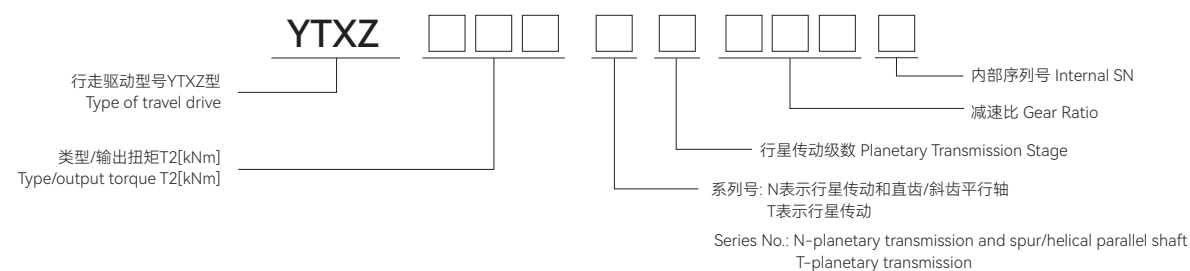
型号表示方法
Model Denotation

· 输出扭矩130~600kNm
Output torque 130~600kNm



· 示例: YTXZ160T3-120-II SL (SL表示输出端为加强型轴承)
Example: YTXZ 160T3-120-II SL (SL: the output end shall be reinforced bearing)

· 输出扭矩 600~1300kNm
Output torque 600~1300kNm



· 示例: YTXZ 600N3-640-I
Example: YTXZ 600N3-640-I

技术参数
Technical Parameter

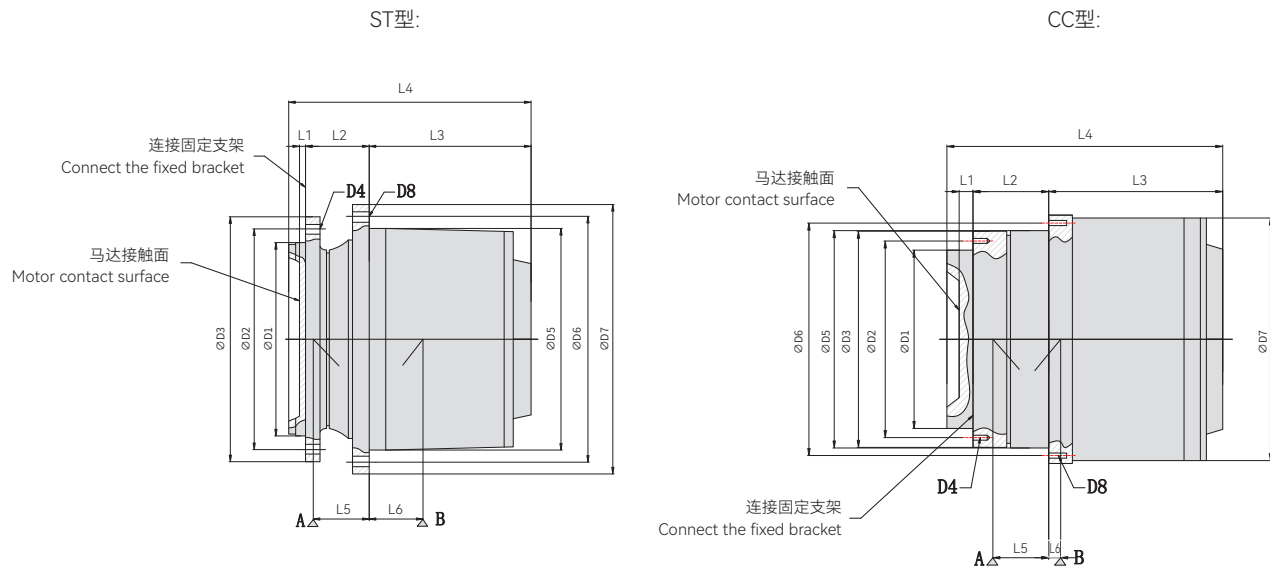
YTXZ型 (输出扭矩 Output Torque 130~600kNm)

| 型号 Type | 输出扭矩(Nm) T2max Output Torque | 速比(i) Ratio | 制动转矩(Nm) TBr max Braking Torque |
|-----------------------------|---------------------------------|-------------------------|------------------------------------|
| YTXZ130T3 | 130,000 | 81-206 | 750 |
| YTXZ 160 T3 | 160,000 | 210.8 | 1020 |
| YTXZ 220 T3 I | 220,000 | 67.7-97.7-188.9-246-293 | 1100 |
| YTXZ 220 T3 II | 220,000 | 67.7-97.7 | - |
| YTXZ 220 T3 III | 220,000 | 145.4 | 1400 |
| YTXZ 220 T3 IV (见注1 Note 1) | 220,000 | 345 | 1100 |
| YTXZ 260 T3 | 260,000 | 188.9 | 1600 |
| YTXZ 330 T3 I | 330,000 | 168.9-209.9-252.0-302.4 | 2500 |
| YTXZ 330 T3 II | 330,000 | 302.4 | 2500 |
| YTXZ 330 T4 I (见注2 Note 2) | 330,000 | 826.6 | - |
| YTXZ 330 T4 II | 330,000 | 451.7 | 625 |
| YTXZ 400 R3 | 460,000 | 95.61-347.1 | 1450 |
| YTXZ 450 T4 I | 450,000 | 421.7 | 1450 |
| YTXZ 580 T4 I | 600,000 | 610 | 1450 |

注: 1) 结构长度、尺寸及马达不同, 详见附录A具体尺寸 2) 输入端为直角输入传动级
Note: 1) Refer to Appendix A for specific dimensions and motor 2) input end shall be right-angle input drive stage

行走减速机输入、输出方式
Input/output Type of Travel Reducer

- 输出扭矩 130~600kNm
Output torque 130~600kNm



技术参数
Technical Parameter

YTXZ型 (输出扭矩 Output Torque 130~600kNm)

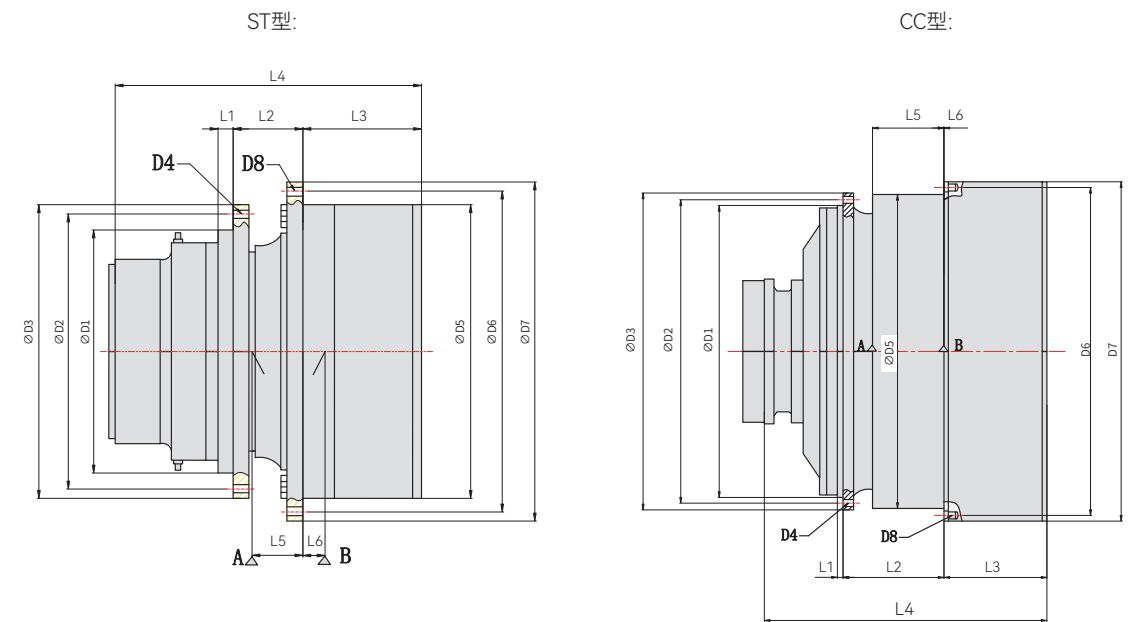
| 型号 Type | D1 | D2 | D3 | D4 | D5 | D6 | D7 | D8 |
|---------------------------|-----|-----|-----|------------|-----|-----|-----|------------|
| YTXZ130 T3 | 390 | 500 | 550 | 32XM24 | 450 | 500 | 550 | 32XM24X2 |
| YTXZ 160 T3 I | 450 | 510 | 560 | 20XM30 | 535 | 600 | 650 | 30XM24X2 |
| YTXZ 160 T3 II | 450 | 510 | 560 | 30XM24X2 | 535 | 600 | 650 | 30XM24X2 |
| YTXZ 220 T3 I | 460 | 600 | 650 | 30XM30 | 610 | 680 | 835 | 24XM30 |
| YTXZ 220 T3 II | 460 | 520 | 580 | 24XM30 | 610 | 680 | 835 | 24XM30 |
| YTXZ 220 T3 III | 460 | 600 | 650 | 30XM30 | 610 | 680 | 835 | 24XM30 |
| YTXZ 220 T3 IV | 450 | 515 | 568 | 29XM36X3 | 580 | 620 | 680 | 42XM30X2 |
| YTXZ 260 T3 | 560 | 630 | 685 | 28XM30 | 610 | 850 | 810 | 28XM30 |
| YTXZ 330 T3 I | 580 | 680 | 835 | 30XM30 | 660 | 830 | 885 | 30XM30 |
| YTXZ 330 T3 II | 580 | 680 | 835 | 30XM30 | 660 | 830 | 885 | 30XM30 |
| YTXZ 330 T3 III | 450 | 515 | 658 | 32XM30X2 | 580 | 620 | 680 | 44XM24X2 |
| YTXZ 330 T4 I (注2 Note 2) | 580 | 680 | 835 | 30XM30 | 660 | 830 | 885 | 30XM30 |
| YTXZ 330 T4 II | 580 | 680 | 835 | 30XM30 | 660 | 830 | 885 | 30XM30 |
| YTXZ 400 R3 | 450 | 515 | 568 | 29XM36X3 | 580 | 620 | 680 | 42XM30X2 |
| YTXZ 450 T4 | 450 | 515 | 568 | 29XM36X1.5 | 580 | 620 | 680 | 42XM30X1.5 |
| YTXZ 580 T4 | 450 | 515 | 568 | 29XM36X1.5 | 580 | 620 | 880 | 42XM30X1.5 |

| 型号 Type | L1 | L2 | L3 | L4 | L5 | L6 | A+B(KN) | | 质量(kg) Mass | 型式 (T/K) Model |
|--------------------------|-----|-----|-----|-------|-----|------|---------|-------|----------------|-------------------|
| | | | | | | | C | Co | | |
| YTXZ130 T3 | 45 | 190 | 295 | 530 | 147 | 50.5 | - | - | 452 | T |
| YTXZ 160 T3 I | 30 | 168 | 340 | 538 | 138 | 26 | 688 | 1,520 | 680 | T |
| YTXZ 160 T3 II | 30 | 168 | 340 | 538 | 138 | 26 | 688 | 1,520 | 680 | T |
| YTXZ 220 T3 I | 45 | 180 | 350 | 565 | 155 | 35 | 810 | 1,560 | 680 | T |
| YTXZ 220 T3 II | 45 | 180 | 350 | 565 | 155 | 35 | 810 | 1,560 | 850 | T |
| YTXZ 220 T3 III | 45 | 180 | 350 | 565 | 155 | 35 | 810 | 1,560 | 850 | T |
| YTXZ 220 T3 IV | - | 255 | 305 | - | 190 | 18 | 810 | 1,560 | 880 | K |
| YTXZ 260 T3 | 98 | 185 | 415 | 688 | 114 | 84 | 810 | 1,560 | 1,000 | T |
| YTXZ 330 T3 I | 150 | 125 | 400 | 685 | 190 | 25 | 1,040 | 2,450 | 1,250 | T |
| YTXZ 330 T3 II | 88 | 188 | 400 | 685 | 190 | 25 | 1,040 | 2,450 | 1,230 | T |
| YTXZ 330 T3 III | 45 | 253 | 442 | 840 | 188 | 38 | 1,040 | 2,450 | 1,210 | K |
| YTXZ 330 T4 I(注2 Note 2) | - | 188 | 430 | 1,185 | 190 | 25 | 1,040 | 2,450 | 1,410 | - |
| YTXZ 330 T4 II | - | 188 | 400 | 685 | 190 | 25 | 1,040 | 2,450 | 1,320 | T |
| YTXZ 400 R3 | 13 | 255 | 522 | 820 | 185 | 34 | 1,040 | 2,450 | 1,260 | K |
| YTXZ 450 T4 | 13 | 255 | 512 | 810 | 185 | 19 | 1,040 | 2,450 | 1,240 | K |
| YTXZ 580 T4 | 13 | 255 | 533 | 831 | 188 | 28 | 1,040 | 2,450 | 1,440 | K |

注2: 输入端为直角输入传动级
Note2: Input end is right-angle input drive stage

行走减速机输入、输出方式
Input/output Type of Travel Reducer

- 输出扭矩 600~1,300kNm
Output torque 600~1,300kNm



YTXZ 型(输出扭矩 Output Torque 600~1300kNm)

| 型号 Type | 输出扭矩(Nm) T2max Output Torque | 速比(i) Ratio | 制动转矩(Nm) TBr max Braking Torque | 应用** Application |
|------------------|---------------------------------|----------------------|------------------------------------|---------------------|
| YTXZ 0600 N/1*** | 600,000 | 243.5 | 1X*3,115 | ST |
| YTXZ 0600 N/2*** | 600,000 | 敬请垂询 If in doubt ask | 2X*1,200 | ST |
| YTXZ 0600 N | 600,000 | 敬请垂询 If in doubt ask | 2X*1,830 | CC |
| NYTXZ 0800 N | 792,000 | 284.8 | 与马达集成 (Integration with motor) | ST |
| NYTXZ 0800 N | 984,000 | 386.7 | 2X*1,830 | CC |
| NYTXZ 1100 N | 1,117,000 | 401.5 | 2X*1,700 | ST |
| NYTXZ 1300 N | 1,300,000 | 458.5 | 2X*1,700 | ST |

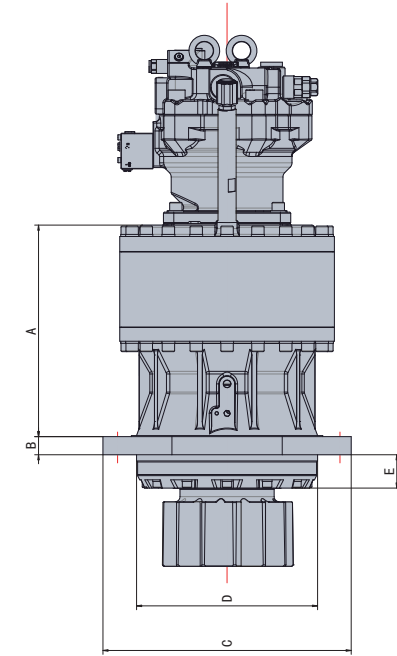
| 型号 Type | D1 | D2 | D3 | D4 | D5 | D6 | D7 | D8 |
|---------------|-------|-------|-------|------------|-------|-------|-------|------------|
| YTXZ 0600 N/1 | 680 | 850 | 815 | 30XM39 | 885 | 985 | 1,055 | 24XM29 |
| YTXZ 0600 N/2 | 830 | 810 | 880 | 41XM30X2 | 885 | 965 | 1,020 | 48XM30X2 |
| YTXZ 0600 N | 668 | 826 | 889 | 30XM36X1.5 | 880 | 850 | 900 | 45XM36X1.5 |
| YTXZ 0800 N | 830 | 980 | 1,050 | 48XM30X2 | 920 | 986 | 1,055 | 48XM30X2 |
| YTXZ 0800 N | 668 | 826 | 889 | 30XM36X1.5 | 880 | 850 | 900 | 45XM36X1.5 |
| YTXZ 1100 N | 1,110 | 1,230 | 1,310 | 48XM36 | 1,040 | 1,180 | 1,226 | 52XM30 |
| YTXZ 1300 N | 1,110 | 1,230 | 1,310 | 48XM36 | 1,040 | 1,180 | 1,226 | 52XM30 |

| 型号 Type | L1 | L2 | L3 | L4 | L5 | L6 | A+B(KN) | | 质量(kg) Mass |
|---------------|------|-------|-------|---------|-------|------|---------|-------|----------------|
| | | | | | | | C | Co | |
| YTXZ 0600 N/1 | 60 | 242.5 | 459.5 | 1,168 | 186 | 62 | 1,320 | 3,150 | 2,500 |
| YTXZ 0600 N/2 | 58.5 | 245 | 464.5 | 1,161 | 186 | 62 | 1,320 | 3,150 | 2,600 |
| YTXZ 0600 N | 33 | 405 | 368 | 1,211.5 | 248 | 6 | 1,320 | 3,150 | 2,850 |
| YTXZ 0800 N | 25 | 229 | 683 | 1,332 | 69 | 186 | 2,450 | 5,200 | 3,800 |
| YTXZ 0800 N | 66 | 405 | 486 | 1,324 | 244 | 2 | 2,450 | 5,200 | 3,320 |
| YTXZ 1100 N | 60 | 503 | 585 | 1,524 | 318.5 | 48.5 | 3,900 | 8,650 | 8,050 |
| YTXZ 1300 N | 60 | 503 | 593 | 1,565.5 | 319 | 49 | 3,900 | 8,650 | 8,500 |

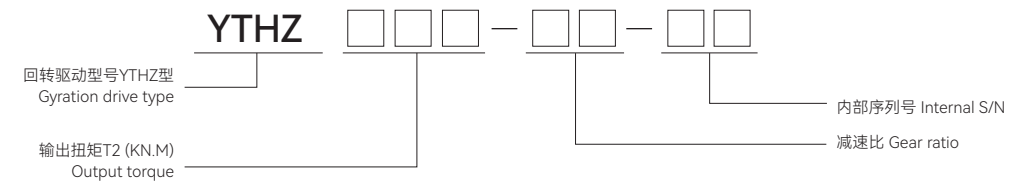
注:1)*-制动器数量 2)*-ST=标准型号, CC=适用于履带驱动; ***-马达数量
YTXZ系列减速机的输入和输出方式及外形尺寸应符合附录A(规范性附录)的规定
Note:1)*--Qty. of braking 2)**-ST=Standard type, CC=applicable to caterpillar drive; *** -Qty. of motor
Input/output type and overall dimensions of YTXZ reducer shall comply with Appendix A(Normative Appendix)

附录 A(规范性附录)
1.YTXZ系列行星减速机的输入、输出方式和主要外形及安装尺寸
2.图A-1列出了YTXZ系列行星减速机的输入和输出方式(输出扭矩130~600kNm)
3.图A-2给出了YTXZ系列行星减速机的主要外形和安装尺寸(输出扭矩600~1300kNm)

Appendix A(Normative Appendix)
1.Input / output type, major configuration and installation dimensions of YTXZ planetary reducer
2.Diagram A-1 illustrates input and output type of YTXZ planetary reducer (output torque 130~600kNm)
3.Diagram A-2 illustrates major configuration and installation dimensions of YTXZ planetary reducer(output torque 600 - 1300kNm)



型号表示方法
Model Denotation



| 型号 Type | 额定输出扭矩(Nm) Output Torque | 速比(i) Ratio | 马达排量(cc/r) Motor displacement | 输出齿参数 Output tooth parameter |
|------------|-----------------------------|----------------|----------------------------------|---------------------------------|
| YTHZ200 | 19740 | 22 | 250 | M16,Z=13 |
| YTHZ200 | 20010 | 19.6 | 250 | M16,Z=13 |
| YTHZ235 | 23500 | 21.78 | 250 | M16,Z=13 |
| YTHZ250 | 24500 | 21.78 | 250 | M18,Z=12 |
| YTHZ400 | 40000 | 25 | 250 | M20,Z=11 |
| YTHZ540 | 54000 | 49.28 | - | - |
| YTHZ620 | 62000 | 62.2 | - | - |
| YTHZ1150 | 115000 | 63.6 | - | - |

| 型号 Type | A | B | C | D | E |
|------------|-----|----|-----|-----|------|
| YTHZ200 | 422 | 35 | 480 | 350 | 61 |
| YTHZ200 | 422 | 35 | 480 | 350 | 64.5 |
| YTHZ235 | 412 | 35 | 570 | 380 | 65 |
| YTHZ250 | 412 | 35 | 570 | 380 | 65 |
| YTHZ400 | 417 | 80 | 540 | 440 | 72 |
| YTHZ540 | - | - | - | - | - |
| YTHZ620 | - | - | - | - | - |
| YTHZ1150 | - | - | - | - | - |



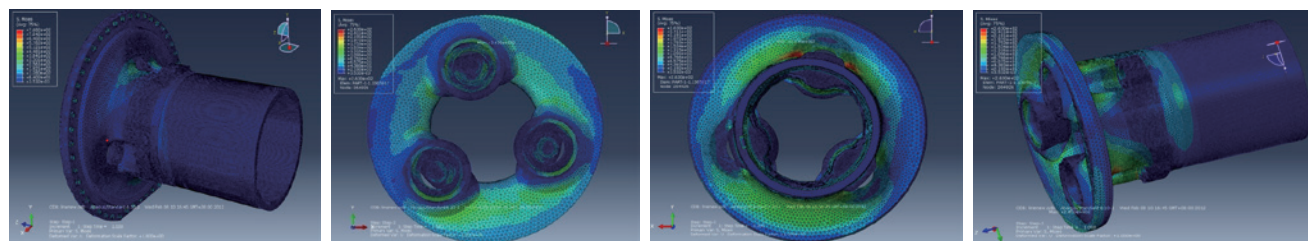
APMC 亚太传动

非公路矿车轮边减速机总成
WHEEL HUB REDUCER ASSEMBLY
FOR OFF-HIGHWAY MINE TRUCK

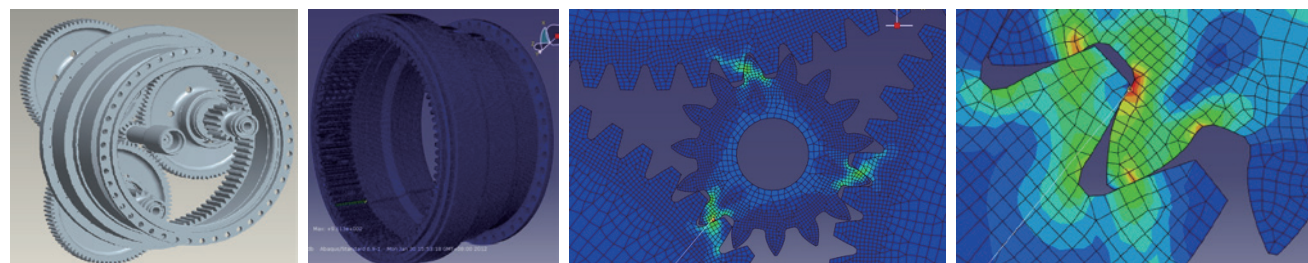
2010年，亚太传动进入矿用自卸车行业，批量生产配套轮边减速机、齿轮等零部件。目前，公司具备载重60吨-320吨矿车轮边减速机、齿轮的设计制造能力，已在矿用自卸车行业与多家主机厂及终端用户保持广泛合作。

In 2010, APMC entered into haul truck field, focusing on mass production of matched wheel hub reducer and parts, e.g. gear. At present, APMC is capable of designing and manufacturing reducer and gear for wheel hub of 60t-320t mine truck, and has built extensive cooperation with machine suppliers and end-users in haul truck industry.

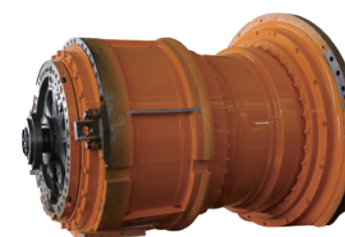
机架零件有限元分析
Finite Element Analysis of Housing Parts



齿轮件三维及有限元分析
3D and Finite Element Analysis of Gear



产品概况
Product



230吨电动轮总成
230t Electric Wheel Assembly

额定输入扭矩: 12900NM
速比: 31.875
适用车型: 230吨矿用自卸车
运行时间: 15000小时以上

Rated input torque: 12900NM
Ratio: 31.875
Application: 230t off-highway truck
Operation time: over 15000 hours



130/150吨轮边减速机
130t/150t Wheel Reducer

额定输入扭矩: 4268/5457N.M
最大输入扭矩: 12800/15300N.M
速比: 33.85/30.36
重量: 5000/5500KG
适用车型: 130/150吨矿用自卸车

Rated input torque: 4268/5457N M
Maximum input torque: 12800/15300N M
Speed ratio: 33.85/30.36
Weight: 5000/5500KG
Applicable model: 130/150 ton mining dump truck



扭力管
Torque Tube

材质: 34CrNiMo6
硬度: 50-55HRC
适用车型:
170吨、190吨、230吨矿用自卸车

Material: 34CrNiMo6
Hardness: 50-55HRC
Application:
off-highway truck of 170t, 190t, 230t



行星轮总成
Planetary Gear Assembly

材质: 18CrNiMo7-6
硬度: 58-62HRC
适用车型:
170吨、190吨、230吨矿用自卸车

Material: 18CrNiMo7-6
Hardness: 58-62HRC
Application:
off-highway truck of 170t, 190t, 230t