



GAODETEC

Foam Concrete Machine

- ★ We full strive for shared NORMS and VALUES:
- ★ Safety and stringent quality control
- ★ Maneuverability and operator comfort
- ★ Reliability
- ★ Technical sophistication & after-sales full support



Gaode Equipment Co., Ltd.

No.9, Building 14, Yard No.4, Fengqing Road, Jinshui District,
Zhengzhou, Henan China P.C. 450053
Tel: +86-371-55951660/55090762/55951210
Mobile/WhatsApp/Viber: +86-13939067523
Fax: +86-371-63526676
Email: info@gaodetec.com
Website: www.gaodetec.com



GF5/GF10B clc foam concrete machine

GF5/GF10B clc foam concrete machine includes a Screw Conveyor, a Concrete Mixer, a Foam Generator and a Hose Pump, adopts advanced control technology, can exactly adjust the density of foam cement. It can put directly on the truck for working.

Features:

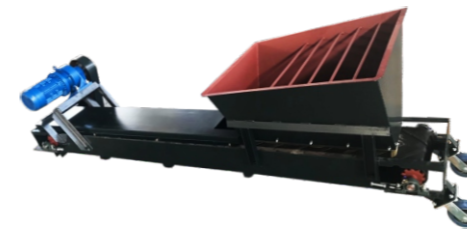
1. It is a small-sized one, compact structure, easy to move;
2. Feeding, foaming, mixing and pumping system assemble as a whole, convenient to use;
3. Centralized control system, Easy To Operate, Time-Saving And Labor-Saving;
4. With automatic lubrication system to Increase Equipment Life;
5. The mixing blade is provided with a rubber sheet to minimize mortar adhering to the inner wall of the mixing drum, and mixing is more uniform;
6. It has the continuous feeding and water supply system, with high pumping height and low power cost.



Technical Data

Model	GF5	GF10B
Max. theoretical output(m/h)	5	10
Motor power(kw)	7.7	13.2
Theoretical vertical conveying height(m)	40	40
Theoretical level transmission distance(m)	300	300
Mixer tank capacity(L)	300	300
Feeder size(mm)	2990*760*830	2990*760*830
Overall dimension(mm)	2100*1340*1390	2390*1490*1440mm
Total weight(kg)	910	1000

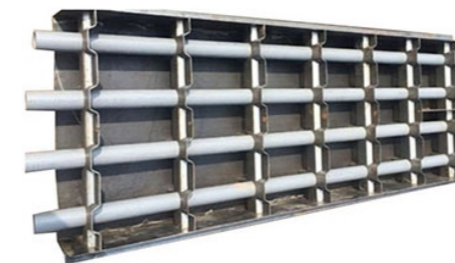
Belt conveyoyr



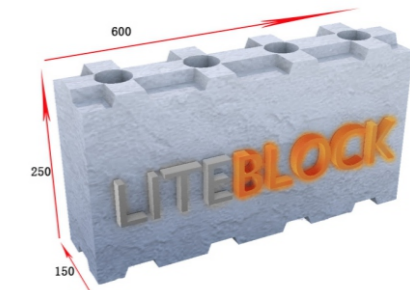
Screw conveyoyr



Interlock mould
6 blocks/mould



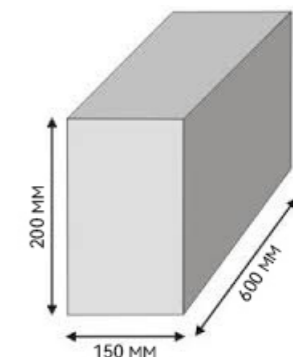
Interlock brick
600*150*250mm



Solid mould
13 blocks/mould



Solid brick
600*200*150mm



GF5H/GF10H clc block making machine

GF5H/GF10H clc block making machine includes 2 Concrete Mixers, a Screw Conveyor, a Belt Conveyor, a Foam Generator and a Hose Pump, adopts centralized control technology, can exactly adjust the density of foam cement.

It is specially designed for clc block making, and this machine with Auto-Weighting System, can automatically measure cement, sand, etc. raw material, very convenient to operate.

Features:

1. Duplex mixer system to ensure continuous production and uniform density. This design can improve capacity and save labor greatly.
2. Automatically control the proportion of the various components, density of foaming cement easy to be adjusted.
3. High-quality wear resistant components for long service-life and also provide after-sales service security.
4. Installed with walk round, can move on the ground or mounted on the truck.
5. Can be used as cement foaming machine and mortar pump.



Technical Data

Model	GF5H	GF10H
Max. theoretical output(m³/h)	5	10
Motor power(kw)	10	15
Theoretical vertical conveying height(m)	40	40
Theoretical level transmission distance(m)	300	300
Mixer tank capacity(L)	250&500	350&750
Feeder size(mm)	2990*760*830	2990*760*830
Foam concrete machine dimension(mm)	2100x1340x1390	2850*1000*1500
Total weight(kg)	1500	1700

GF20/GF30/GF40 foam machine concrete machine

GF20/GF30/GF40 electric foam machine concrete machine includes a Screw (Belt) Conveyor, a Concrete Mixer, a Foam Generator and a Hydraulic Piston Pump, adopts centralized control technology, can exactly adjust the density of foam cement, suitable for floor and roof insulation.

Features:

- Frequency converter:** adopts digital control technology, can exactly adjust foam cement density.
- Static mixer:** reduce the ratio of foam loss and guarantee the quality of the foam concrete.
- Hydraulic piston system:** stable flow, small fluctuation, and low foam loss ratio.
- Screw conveyor:** automatic delivery, time-saving and labour-saving.



Technical Data

Model No /Cement foam machine	GF20	GF30	GF40
The theoretical output (m³/h)	20	30	40
Max. Horizontal conveying distance(m)	500	500	1200
Max. Vertical conveying distance(m)	80	80	160
Voltage	3 phase, 380V, 50Hz		
Power(kw)	21	21	47
Mixing tank capacity (L)	580	580	735
Filling height (mm)	1100	1100	1100
Over dimension(mm)	3000*1420*830	2200*1540*1760	2800*1650*1760

GF20D diesel foam cement machine

GF20D diesel foam cement machine includes a Screw (Belt) Conveyor, a Concrete Mixer, a Foam Generator and a Hydraulic Piston Pump, adopts centralized control technology, can exactly adjust the density of foam cement, suitable for floor and roof insulation.

Features:

1. Frequency converter: can exactly adjust foam cement density.
2. Diesel engine: use diesel as the power, need not the electricity, adapt to operate where there is no electricity, can be used outside or field.
3. Static mixer: reduce the ratio of foam loss and guarantee the quality of the foam concrete.
4. Hydraulic piston system: stable flow, small fluctuation, and low foam loss ratio.
5. Screw conveyor: automatic delivery, time-saving and labour-saving.



Technical Data

Model	GF20D
Max. theoretical concrete put(m ³ /h)	20
Diesel engine power(kw)	53
Theoretical vertical conveying height(m)	80
Theoretical level transmission distance(m)	500
Mixer tank capacity(L)	580
Filling height(mm)	1100
Mixer size(mm)	1940*780*1470
Feeder size(mm)	3990*760*830
Main part overall dimension(mm)	4000*1500*1900
Weight of main part(kg)	3000

GM2000 foam concrete mixer with auto-weighing system

GM2000 foam concrete mixer includes feeding system-screw & belt conveyor, foaming system-foam generator, mixing system-foam concrete mixer, controlling system-control panel and weighing system-load cells. The foam concrete mixer is used to mix cement, sand, water, foam, etc. raw materials into fluid foam concrete, and the finished foam concrete can be used for floor heating, roof insulation, CLC blocks, cast in-situ walls, foundation filling, tunnel filling, etc.

Features:

1. Feeding system: screw conveyor for feeding cement, belt conveyor for feeding sand.
2. Auto-weighing system: weight each material automatically, time and labor saving.
3. Mixer system: big capacity, 2000L per batch, more efficiency.
4. Adding foam to mixer, foam concrete mixing more even.
5. Lubrication system: make the machine more durable.
6. Control system: concentrated control, easy to operate.



Technical Data

Model	GM2000	Motor
Mixer tank capacity	2000L	15kw
Measurement method	Cumulative measurement	-
Discharge method	Manual discharge	-
Belt conveyor	300*3800mm	4kw
Screw conveyor	Φ165*4000mm	4kw
Water pump	50m ³ /h	3kw
Foam generator	30m ³ /h	4kw
Dimension	4000*2050*1900mm	-
Weight	1500kgs	-

GFC1000-H foam concrete machine

GFC1000-H foam concrete machine is composed of mixer, agitator, foam generator, hose pump, equipped with screw feeder, belt conveyor and submersible pump. The equipment is equipped with a weighing sensor and automatic batching system, which can set each batching weight and realize automatic feeding and full mixing.

Features:

1. Automatic control and weight cell loading; material weight mixing ratio precise, simple operation, saving labor, great reliability;
2. Heavy duty and powerful mixer, easily to mix sand, cement, water and foam agent, as well as high efficiency to achieve continuous mixing and continuous work;
3. Up to 20bar high pumping pressure to meet high floor pumping requirement;
4. Foam agent can be added into the mixer continuously, high working efficiency.



Technical Data

Model	GFC1000-H	
Items	Specification	
Mixer	Volume	600L
	Power	7.5kw,3 phase, 380V, 50Hz
	Speed	45rpm
Agitator	Volume	650L
	Power	1.5kw
High-tech pumping system	Output	8m ³ /h, 20bar pumping pressure
	Power	7.5kw
Foam generator	Pumping distance	Vertical: 130m; Horizontal:250m
	Foam output	600L/min
Dimension	Air pressure	6 bar
	Weight	2400×1900×1960mm
		1200kg

GF100 foam concrete equipment

GF100 foam concrete equipment is one of the most advanced equipment developed by our company. It integrates feeding, batching, mixing, storage, foaming, pumping and control. It adopts container design, which is convenient for operation and movement. It adopts extrusion pumping system, with low power consumption, low noise, simple structure, easy maintenance and stable pressure.

Features:

1. It is equipped with material batching metering device as standard. Cement, powder, water, etc. can be measured separately to accurately control the material ratio;
2. The high and low pressure density stabilization technology developed by our company is adopted to ensure that the density of lightweight concrete output by the equipment at close and long distances is constant and will not change due to changes in the conveying distance or conveying height;
3. The lightweight concrete density monitoring and control device developed by our company can be optionally equipped to realize full automatic control, instant detection and automatic adjustment of the wet density and dry density of lightweight concrete; the touch screen intelligent control system is adopted, and the working status and various parameters of the equipment can be intuitively displayed on the screen.



Technical Data

Model	GF100
Max. foam concrete output(m ³ /h)	100
Motor power(kw)	71
Theoretical vertical conveying height(m)	40
Theoretical level conveying distance(m)	300
Mixer tank capacity(L)	1200
Storage mixer tank capacity (L)	1500
Measure method	Automatic

GA40 cement foaming agent for foam concrete

GA40 cement foaming agent for foam concrete is a high-tech product. It has the characteristics as high expansion ratio, balanced density, foaming stability, and a long continuance, etc. Thus, it is an environmental protective mighty foaming agent, which is non-toxic, odorless, nuisance-free and pollution-free.

Features:

1. Low consumption, low cost, stable quality, etc.
2. Every drum foam agent can produce foam about 33g/L.
3. Foam agent for concrete widely used for floor heating and roof insulation engineering.
4. Foamed concrete bubbles are independent, resistance to water.
5. Concrete foam agent compared to same density concrete, sealing and insulation properties of the foam concrete are better.
6. Based on the excellent thermal insulation properties, thickness(1.5mm) can be applied to foam concrete brick, light board and wall.



Technical Data

Model	GA40
Type	Light yellow transparent liquid
Density(kg/L)	1.06
PH value	6.5-7.5
Foam agent: water	1:40
Foaming ratio	30
Settling distance(mm)	<=20
Secret water volume(ml)	<=80
Operating temperature(°C)	>=5
Weight(kg)	200

GW30B automatic wire cutting machine

GW30B automatic steel wire cutting machine is a new product in the foam concrete plant. It is specially used to cut various size foam concrete blocks, from 100mm to 1200mm. Easy operation, high efficiency.

Features:

1. The lifting motor adopt the standard automatically brake motor.
2. Lifting speed could be adjusted through the frequency converter.
3. The block size between 100--1200mm could be adjusted willfully.
4. All motors are equipped with speed reducers.
5. It is improved on the basis of the GW30A wire cutting machine, it is specially used to cut various foam concrete blocks. Easy operation, high efficiency.



Technical Data

Model	GW30B
Max. cutting length and width	100mm-1200mm
Max. cutting height	100mm-600mm
Cutting cycle	2-4 minutes
Cutting wire diameter	2mm
Voltage	3 phase, 380V, 50Hz
Lifting motor	1.5kw*1set, 0~1400 r/min
Cutting motor	550w*2sets, 960 r/min
Dimension	2100*2050*2300mm
Weight	1500kg