



广告招商品牌 400-0516-8655 11 0516-86555111 QQ: 347334973

挖斗产品手册

MACHINE TOOL
PRODUCT MANUAL

徐州世腾机械有限公司

Xuzhou Stone Machinery Co., LTD

地址：徐州市邳州市土山镇工业园区古镇路东侧 1 号

Add: No.1, East side of Guzhen Road, Industrial Park, Tushan Town, Pizhou City, Xuzhou City

手机 /Mob: 136 0521 5661 电话 /Tel: 0516-8655 8808

网址 /Web: www.xzstone.cn 邮箱 /E-Mail: wse2005@163.com

徐州世腾机械有限公司

Xuzhou Stone Machinery Co., LTD

CONTENTS

目录

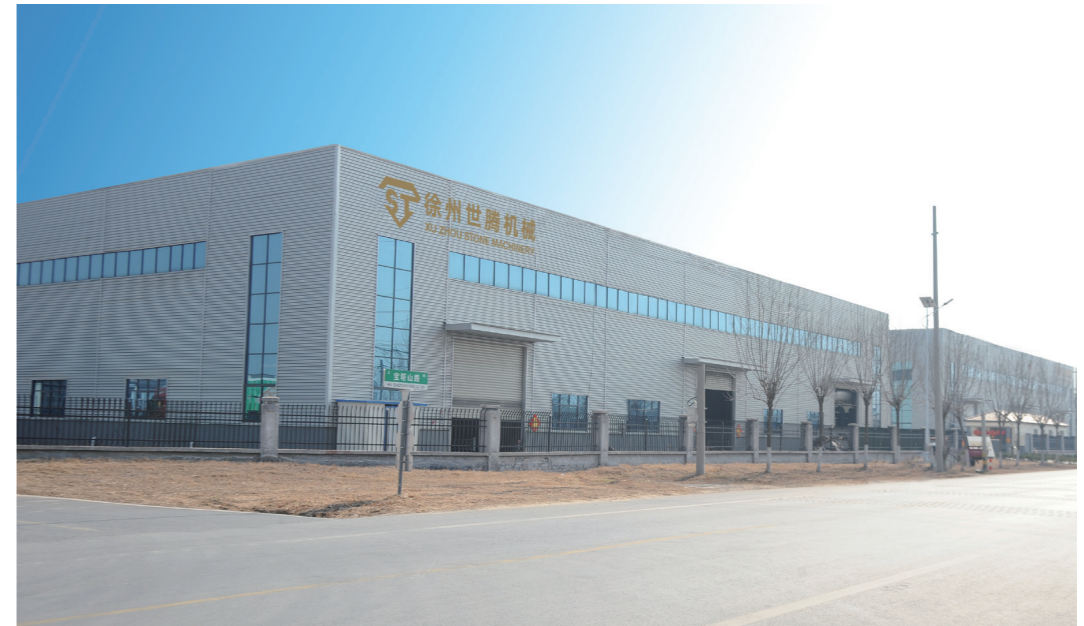


CONTENTS

01 公司简介	03-04
02 车间设备	05-06
03 产品介绍	07-28
岩石斗	07
矿山斗	07
土方斗	08
地矿斗	08
网格斗	09
倾斜斗	09
筛分斗	10
贝壳斗	10
岩石铲斗	11
土方铲斗	11
松土斗	12
梯形斗	12
簸箕斗	13
泥斗	13
松土器	14
推土板	14
拇指钳	15
夹木器	15
震动夯	16
压实器	16
快速转换器	17
液压回转筛型斗	17
耙子	18
铲斗	18
破碎锤	19
护网	19
耐磨铸件	20
04 施工现场	21
05 营销网络	22
06 售后服务	22

COMPANY PROFILE

公司简介



徐州世腾机械有限公司坐落于中国的工程机械之都—徐州，占地 58 亩、生产车间近 18000 平方米、整体建筑面积 21000 平方米，公司专业从事；研发、生产、销售，适用于挖掘机、装载机、滑移装载机、挖掘装载机、推土机、平地机、叉车等各种工程机械的专业属具、机具、耐磨件和配件的现代化制造企业。

公司产品适配；CAT、山猫、CASE、JCB、小松、日立、现代、沃尔沃、徐工、三一、柳工等国内外各品牌的机械属具。

公司产品涵盖几十个品种，广泛用于；基础建设、环卫物业、园林牧业、矿山道路、港口码头、物流装卸等，均可提供完善的产品支持，既能标准化生产，也能根据客户需求设计定制，公司拥有自主进出口经营权，公司产品 90% 出口美国、德国、澳大利亚、加拿大、俄罗斯等国。

公司立足于质量、诚信及优良的服务，赢得国内外客户的信赖，竭力为客户提供方便快捷、性价比高的产品，满足客户的需求，三位一体（企业、员工、客户）共同发展，携手共进。

Xuzhou STONE machinery co., LTD located in XUZHOU which is the capital of construction machinery in China. The company cover an area of 58 acres .our workshop is nearly 18,000 square meters, and overall construction area is 21,000 square meters. Our company is a modern manufacturing enterprise specialized in production of various multi-functional accessories, wear-resistant parts and accessories of construction machinery.

Our products are applicable to: Caterpillar, Bobcat, Case, Komatsu, Jcb, Hitachi, Hyundai, Volvo, XCMG, liugong, longgong, and other well-known brands at CHINA and OVERSEAS MARKET.

Our products are covered all kinds of varieties, widely used in infrastructure, sanitation property, garden and animal husbandry, mining, roads, port codes, logistics loading and unloading, etc., we can provide perfect support of product , we can not only be transformed into production but also customized according to customer needs! We have independent importandexportlicense.90%ofourproductsnareexporttoUSA,GERMANY,AUSTRALIA,CANADA,RUSSIA IS.

Based on quality, integrity and excellent service, we win the trust of customers in China and foreign country .we strive to provide customers with convenient, fast, cost-effective products to meet customer needs, and the tree individual in one community (enterprises, employees, customers) development together and work together.



18000 m²

生产车间近 18000 平方米



21000 m²

整体建筑面积 21000 平方米



90%

公司产品 90% 出口美国、德国、澳大利亚、加拿大、俄罗斯等国。

WORKSHOP EQUIPMENT

车间设备



“以品质为企业发展的原动力，以科技为企业竞争的软实力。充足的人才储备，精良的专业队伍，敏锐的开放视角，丰富的行业经验，让徐州世腾机械以雄厚的企业实力，传承经典，汇通四海，智赢天下！”

岩石斗 ▶

ROCK BUCKET

产品特点

PRODUCT FEATURES

- 坚固、耐用。在易磨损部位，添加加强板、保护板，采用高强耐磨钢材制造，高质量斗齿，提高了耐磨性和强度。适用于重载作业，如爆破石料。（挖掘机）
- strong and sturdy. In the easy-wearing part, the reinforcing plate and the protective plate are added, and the high-strength wear-resistant steel is used, and the high-quality tooth is used to improve the wear resistance and strength. Suitable for heavy duty operations such as blasting stones. (excavator)



土方斗 ▶

EARTHWORK BUCKET

产品特点

PRODUCT FEATURES

- 专用土方。优质高强度标准钢板、高质量斗齿。适用于轻载作业，沙土、粘土等。（挖掘机）
- Special earthwork. High quality high strength standard steel plate, high quality bucket teeth. It is suitable for light load operation, sand, clay and so on. (Excavator)



矿山斗 ▶

MINING BUCKET

产品特点

PRODUCT FEATURES

- 强度高、耐磨性强。整体加强焊接保护，使其更加坚固。选用高强度耐磨钢，提高了挖掘性能增加经济性。适用于硬石混合、坚石、风化石等重载作业。（挖掘机）
- High strength and wear resistance. Integral strengthening of welding protection to make it more solid. Selection of high strength wear-resistant steel can improve excavation performance and increase economy. It is suitable for hard rock mixing, hard rock, weathered fossils and other heavy-duty operations. (Excavator)



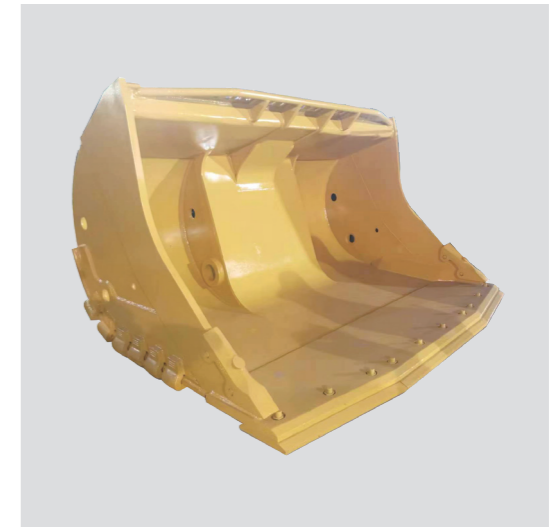
地矿斗 ▶

GEOLOGY AND MINE BUCKET

产品特点

PRODUCT FEATURES

- 斗容大，耐用。采用优质高标钢板制造，高质量斗齿。适用于隧道、坑道，作业。（装载机）
- Big capacity, durable. Made of high quality and high standard steel plate, high quality bucket teeth. Suitable for tunnels, tunnels, operations. (Loader)



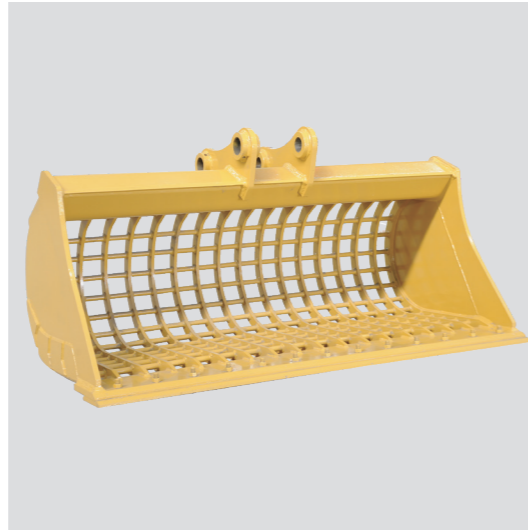
网格斗 ▶

GRID BUCKET

产品特点

PRODUCT FEATURES

- 定制灵活。采用优质高标钢板制造，高质量斗齿。适用于分离较松软的物料，挖掘与分离一次性完成。（挖掘机）
- Customization is flexible. Made of high quality and high standard steel plate, high quality bucket teeth. Suitable for separating soft materials, excavation and separation can be completed at one time. (Excavator)



倾斜斗 ▶

TILT BUCKET

产品特点

PRODUCT FEATURES

- 可以倾斜角度、作业方便、快捷。采用优质高标钢板制造，高质量斗齿。适用于不改变挖机位置就能进行作业，减少机械磨损和油耗，提高工作效率。（挖掘机）
- It can tilt angle, operate conveniently and quickly. Made of high quality and high standard steel plate, high quality bucket teeth. It is suitable for working without changing the position of excavator, reducing mechanical wear and fuel consumption, and improving working efficiency. (Excavator)



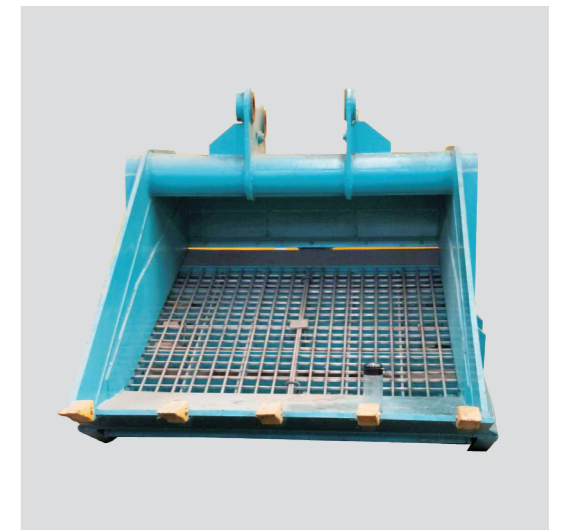
筛分斗 ▶

SCREENING BUCKET

产品特点

PRODUCT FEATURES

- 分类筛除粉碎之前和之后的天然材料。适用于砾石筛选、沙滩清洁、筛选细碎片块。（挖掘机）
- Classify and screen natural materials before and after crushing. It is suitable for gravel screening, beach cleaning and fine debris screening. (Excavator)



贝壳斗 ▶

SHELL BUCKET

产品特点

PRODUCT FEATURES

- 工作效率高，双油缸驱动确保抓力。适用于沟渠、沟槽、船舶、火车、汽车等受限空间物料装卸。（挖掘机、吊机）
- High efficiency, double cylinder drive ensures grip. It is suitable for loading and unloading materials in confined space such as ditches, trenches, ships, trains and automobiles. (Excavators, cranes)



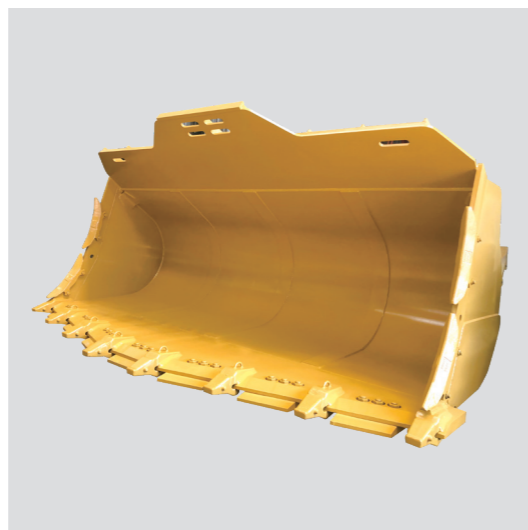
岩石铲斗 ▶

ROCK BUCKET

产品特点

PRODUCT FEATURES

- 坚固、耐用。在易磨损部位，添加加强板、保护板，采用高强耐磨钢材制造，高质量斗齿，提高了耐磨性和强度。适用于重载作业，如爆破石料。（挖掘机）
- strong and sturdy. In the easy-wearing part, the reinforcing plate and the protective plate are added, and the high-strength wear-resistant steel is used, and the high-quality tooth is used to improve the wear resistance and strength. Suitable for heavy duty operations such as blasting stones. (excavator)



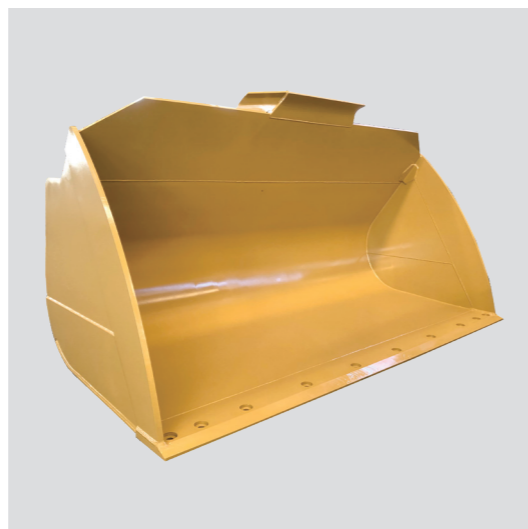
土方铲斗 ▶

EARTHWORK BUCKET

产品特点

PRODUCT FEATURES

- 专用土方。优质高强度标准钢板、高质量斗齿。适用于轻载作业，沙土、粘土等。（挖掘机）
- Special earthwork. High quality high strength standard steel plate, high quality bucket teeth. It is suitable for light load operation, sand, clay and so on. (Excavator)



松土斗 ▶

RIPPER BUCKET

产品特点

PRODUCT FEATURES

- 挖斗上安装，有高强松土齿，有较大的挖掘强度，松土挖掘一次完成，作业效率高。
- The bucket is mounted with high strength loosening teeth, and has greater excavation strength. The loosening excavation is completed at one time, and the operation efficiency is high.



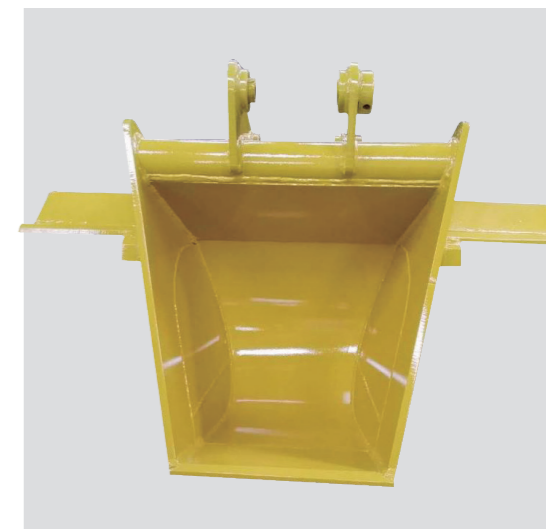
梯形斗 ▶

TRAPEZOIDAL BUCKET

产品特点

PRODUCT FEATURES

- 铲斗有多种宽度和形状，如三角或梯形等，用于水利、公路、农业及管线开沟等作业。
- The bucket has various widths and shapes, such as triangles or trapezoids. It is used in water conservancy, highway, agriculture and pipeline trenching.



簸箕斗 ▶

DUSTPAN BUCKET

产品特点

PRODUCT FEATURES

- 斗型宽而浅，底部平整，有耐磨条加固，使其耐磨耐用。主要用于大理石、矿藏等较大石块的装载及挖掘。
- The bucket shape is wide and shallow, the bottom is flat, and the wear-resistant strip is reinforced to make it wear-resistant and durable. It is mainly used for loading and excavation of larger blocks such as marble and mineral deposits.



泥斗 ▶

MUD BUCKET

产品特点

PRODUCT FEATURES

- 双层刀版，宽度较大，所以容量较大。适用于需要容量较大的斜坡等的平面修整、河道、水沟等的清淤工作，提高工作效率。
- With two cutting edges, large width, so large volume. Where more volumes for slope-surface trimming, waterways dredging, and water ditching are needed.



松土器 ▶

RIPPER

产品特点

PRODUCT FEATURES

- 单齿和多齿挖掘切入能力强。采用优质高强度钢板制造，高质量斗齿。适用于松散硬土、碎石、次坚石、风化石等较硬的物质，方便后期作业。（挖掘机）
- Single-tooth and multi-tooth mining has strong penetration ability. Made of high quality and high strength steel plate, high quality bucket teeth. Applicable to loose hard soil, gravel, sub-hard stone, weathered fossils and other hard materials, convenient for later operation. (Excavator)



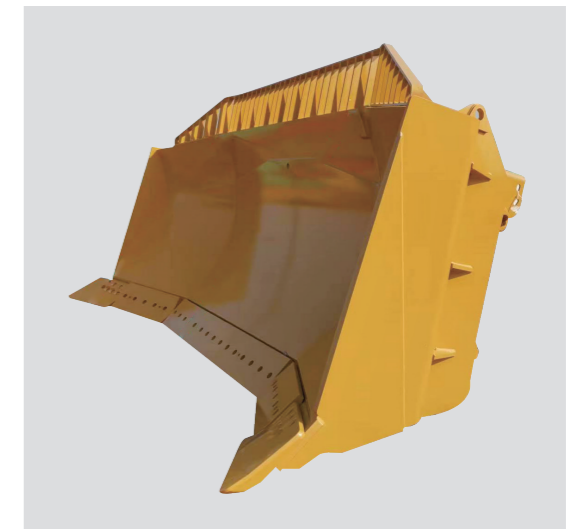
推土板 ▶

BULLDOZING PLATE

产品特点

PRODUCT FEATURES

- 坚固、耐用。采用优质高标钢板制造。适用于道路、场地，物料平整和堆放。（平地机、推土机）
- Strong and durable. Made of high quality and high standard steel plate. It is suitable for road, site, material leveling and stacking. (grader, bulldozer)



拇指钳 ▶

THUMB FORCEPS

产品特点

PRODUCT FEATURES

- 采用优质高标钢板制造，适用于挖掘抓取的特殊作业。（挖掘机）
- Made of high quality and high standard steel plate, it is suitable for special work of excavation and grabbing. (Excavator)



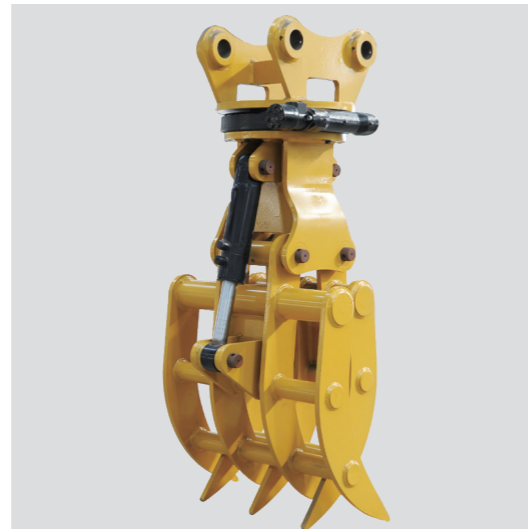
夹木器 ▶

MUD BUCKET

产品特点

PRODUCT FEATURES

- 多齿夹具。适用于甘蔗、木料、石块、钢渣、垃圾等物料的装卸处理作业。（挖掘机）
- Multi-tooth fixture. It is suitable for handling sugarcane, wood, stone, steel slag, garbage and other materials. (Excavator)



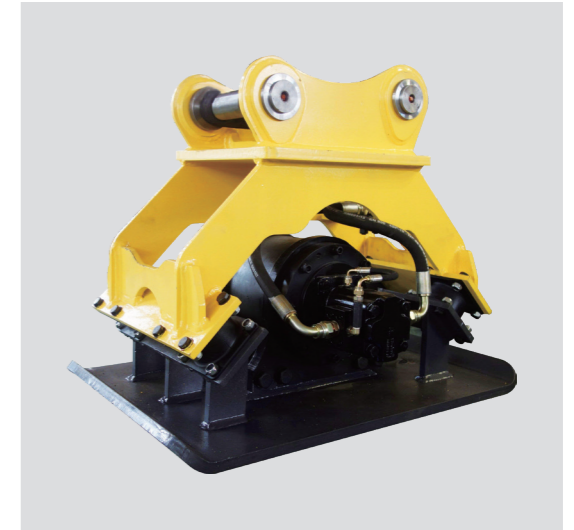
震动夯 ▶

VIBRATION TAMPING

产品特点

PRODUCT FEATURES

- 激振力明显、振幅大。国产高强度板、高强耐磨钢板、进口马达、进口减震块。适用于多种地形及多种作业方式。可完成平面、斜面、台阶、沟槽凹坑的夯实及其他复杂基础的夯实。（挖掘机）
- The excitation force is obvious and the amplitude is large. Domestic high-strength plate, high-strength wear-resistant steel plate, imported motor, imported shock absorber block. It is suitable for various terrain and operation modes. The compaction of plane, inclined plane, step, groove and concave pit and other complicated foundations can be completed. (Excavator)



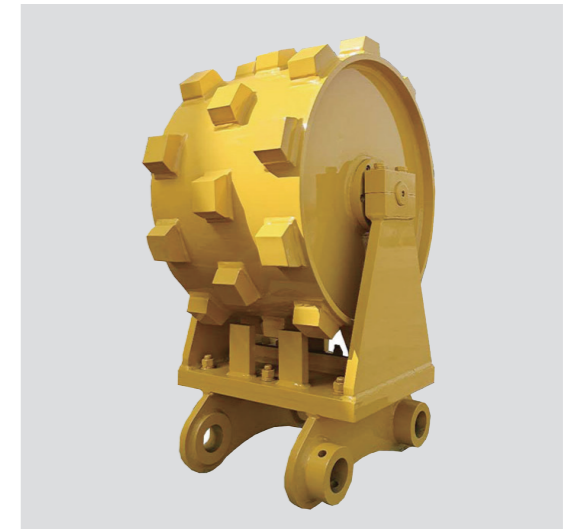
压实器 ▶

COMPACTOR

产品特点

PRODUCT FEATURES

- 轴承旋转、黄油润滑密封系统。采用优质高强度钢制造。适用于路面、地基、坝基边坡等粘土、砾石、沥青混凝土的压实。（挖掘机）
- Bearing rotation and butter lubrication sealing system. Made of high quality and high strength steel. It is suitable for compaction of clay, gravel and asphalt concrete such as pavement, foundation and dam foundation slope. (Excavator)



快速转换器 ▶

VIBRATION TAMPING

产品特点

PRODUCT FEATURES

- 极大提高机械性能，迅速连接各种专用工装机具如铲斗、松土器、抓斗等。（挖掘机、装载机）
- It greatly improves the mechanical performance and quickly connects various special tooling machines such as buckets, looseners, grabs and so on. (Excavator, loader)



液压回转筛型斗 ▶

HYDRAULIC ROTARY SIEVE BUCKET

产品特点

PRODUCT FEATURES

- 抓取建筑废料、工业原料废料、较大的硬土及石块。（挖掘机）
- Grab construction waste, industrial raw material waste, larger hard soil and stones. (Excavator)



耙子 ▶

RAKE

产品特点

PRODUCT FEATURES

- 聚集堆放各种物料，特别在大型农场是很好的工具。（挖掘机）
- Clustering and stockpiling all kinds of materials, especially on large farms, is a good tool. (Excavator)



铲斗 ▶

bucket



破碎锤 ▶

HYDRAULIC ROTARY SIEVE BUCKET

产品特点

PRODUCT FEATURES

- 进口机芯，高质量钎杆。适用于道路建筑拆除、矿山开采、岩石破碎作业。（挖掘机）
- Imported machine core, high quality drill rod. It is suitable for road construction demolition, mining and rock crushing. (Excavator)

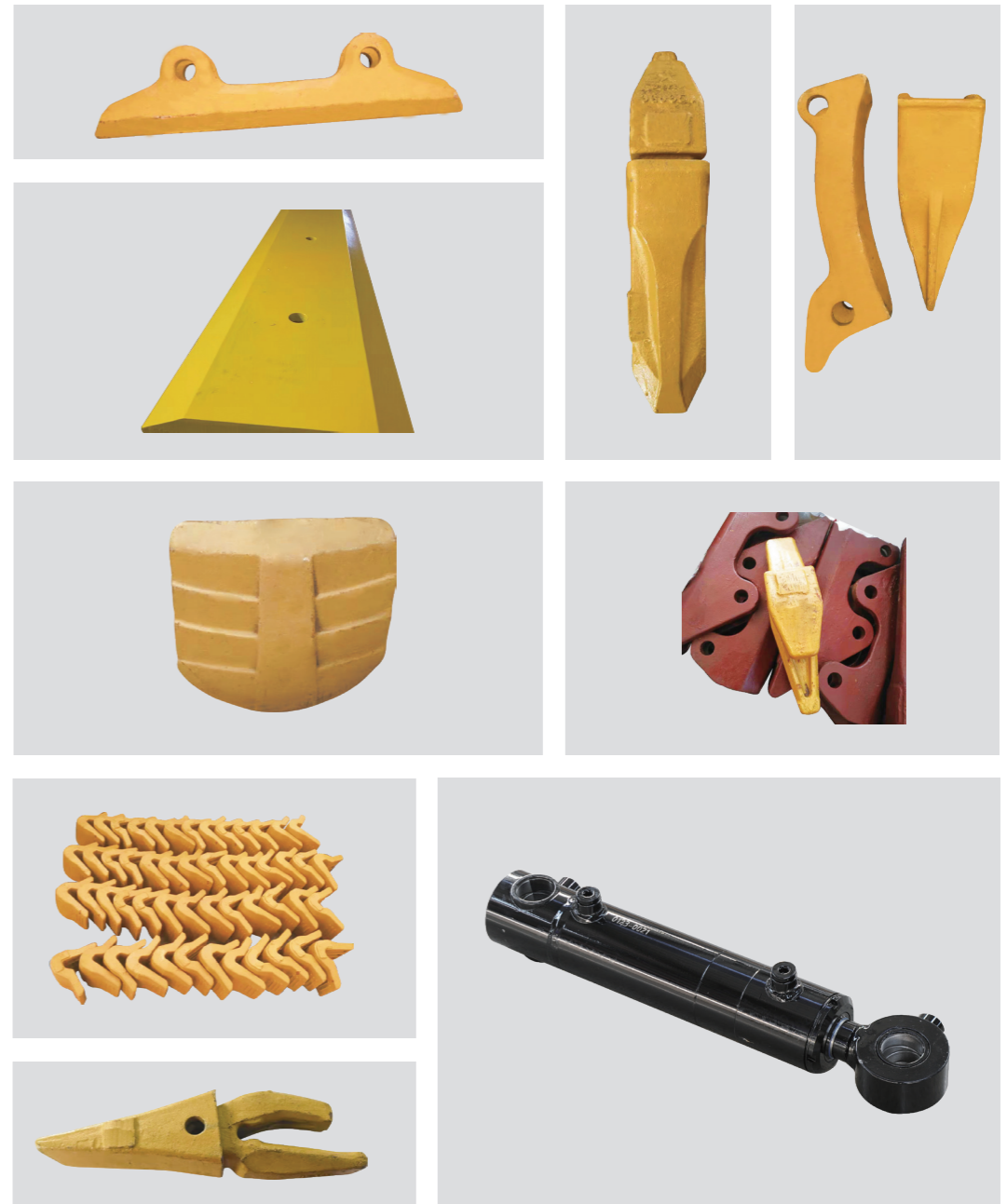


护网 ▶



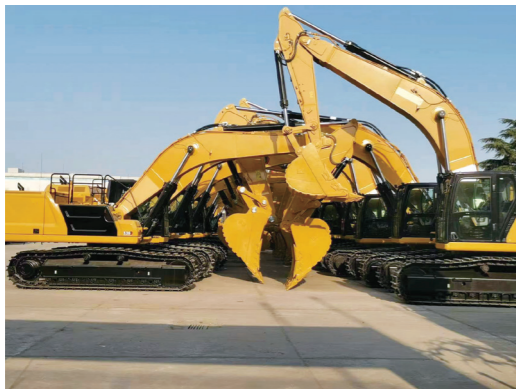
耐磨铸件 ▶

WEAR RESISTANT CASTINGS



CONSTRUCTION SITE

施工现场



MARKETING NETWORK

营销网络

Canada
加拿大

Germany
德国

Russia
俄罗斯



公司所在地



公司产品 90% 出口美国、德国、
澳大利亚、加拿大、俄罗斯等国。

Australia
澳大利亚

AFTER-SALE SERVICE

售后服务

我们在为您提供高品质产品的同时，在售后服务方面做出以下承诺：

1. 针对施工特点为您提供设备配置最佳方案作为参考；
2. 积极推荐熟练操作员，并提供各种技术支持；
3. 主机质保六个月（易损件、特殊部件除外）；
4. 三个月一次定期检查保养友情提醒服务；
5. 备用件库存充足，满足用户随时需要；
6. 售后发货响应时间为当天接单，当晚发货；
7. 售后服务需要现场协助的，到达现场时间 24-36 小时。

