



# 徐州恒兴金桥机械科技有限公司

XUZHOU HENGXING JINQIAO MACHINERY TECHNOLOGY CO.,LTD  
JIANGSU EVESTAR INTERNATIONAL TRADE CO., LTD



Scan QR code to learn more

Website: [www.everstargroup.com](http://www.everstargroup.com)

Contact: +86 15252103728 / +86 516 66671368

E-mail: [admin@hxjinqiao.com](mailto:admin@hxjinqiao.com) / [admin@everstargroup.com](mailto:admin@everstargroup.com)

Add: No.4,Minjiang Road, The 2Nd Industrial Park, Xuzhou High-Tech  
Industrial Development Zone, Xuzhou, Jiangsu, China

# Company Introduction



Xuzhou Hengxing Jinqiao Machinery Technology Co., Ltd is located in the high-tech development zone of Xuzhou city. Our company covers an area of 40000 square meters and with factory area about 30000 square meters.

We are engaged in the manufacture of Highway Guardrail Pile Driver, Solar Pile Driver, Piling Rig Kelly Bar And Spare Parts, Truck-Mounted Aerial Platform, Scissor Lift, Mini Excavator, Backhoe Loader, with our own R&D and sales team.

Our internal management strictly adheres to ISO9001 standard, all products have passed the CE certification. Currently we have 40 patents and we are the high-tech enterprise. Our products have been exported to more than 50 countries such as Japan, South Korea, Russia, Singapore etc.

We provide nationwide quality assurance by 21 domestic offices, perfect after-sales service system provides customers with comprehensive and systematic solutions, we strive to build gold service in the machine industry. Over the past ten years, our products, services and reputation have been widely recognized and praised by more than 6000 construction companies.

Our mission is: Promote Industrial Progress with Scientific and Technological Innovation.

Our core value is: Customer first, Self-Criticism, Embrace Change, Keep Striving.

Our ten years plan is: Open branch companies in at least five countries and maintain the leading position in at least 10 industries.

Our vision is: our loyal users cover 100 countries and 2,000 cities around the world, and make at least 30% of employees become shareholders.

Welcome all colleagues to visit and give guidance! Also welcome all friends to Xuzhou for sightseeing and renewing friendship!

# BACKHOE LOADER E3CXL



# BACKHOE LOADER E3CX



mechanical control

Front four and rear four gears (Maximum speed of 38km/h)

ROPS&FOPS cab, warning light, air conditioner.

Eaton priority valve

Jinan Quancheng pump

Domestic gearbox

Feicheng Yunyun Bridge

Eaton steering gear

Weichai 70KW (or Yuchai 75KW)

Standard triple valve and pipeline, reserved crushing hammer pipeline, standard bucket, standard rear digging arm

A/H type support legs

Tires front wheel 14-17.5

Rear wheel 19.5L-24

# BACKHOE LOADER E3CXT



mechanical control

Front four and rear four gears

ROPS&FOPS cab,  
warning light, air conditioner,

Haihong (or HUSCO) main valve

A/H type support legs

Standard triple valve and pipeline,  
reserved crushing hammer pipeline,  
standard bucket, standard rear  
digging arm

Rear wheel 19.5L-24

Tires front wheel 14-17.5

Eaton priority valve

Jinan Quancheng pump

CARRARO torque converter  
CARRARO transmission

CARRARO drive axle

Weichai 70KW

Eaton steering gear

# TECHNICAL PARAMETER

## Backhoe Loader E3CX

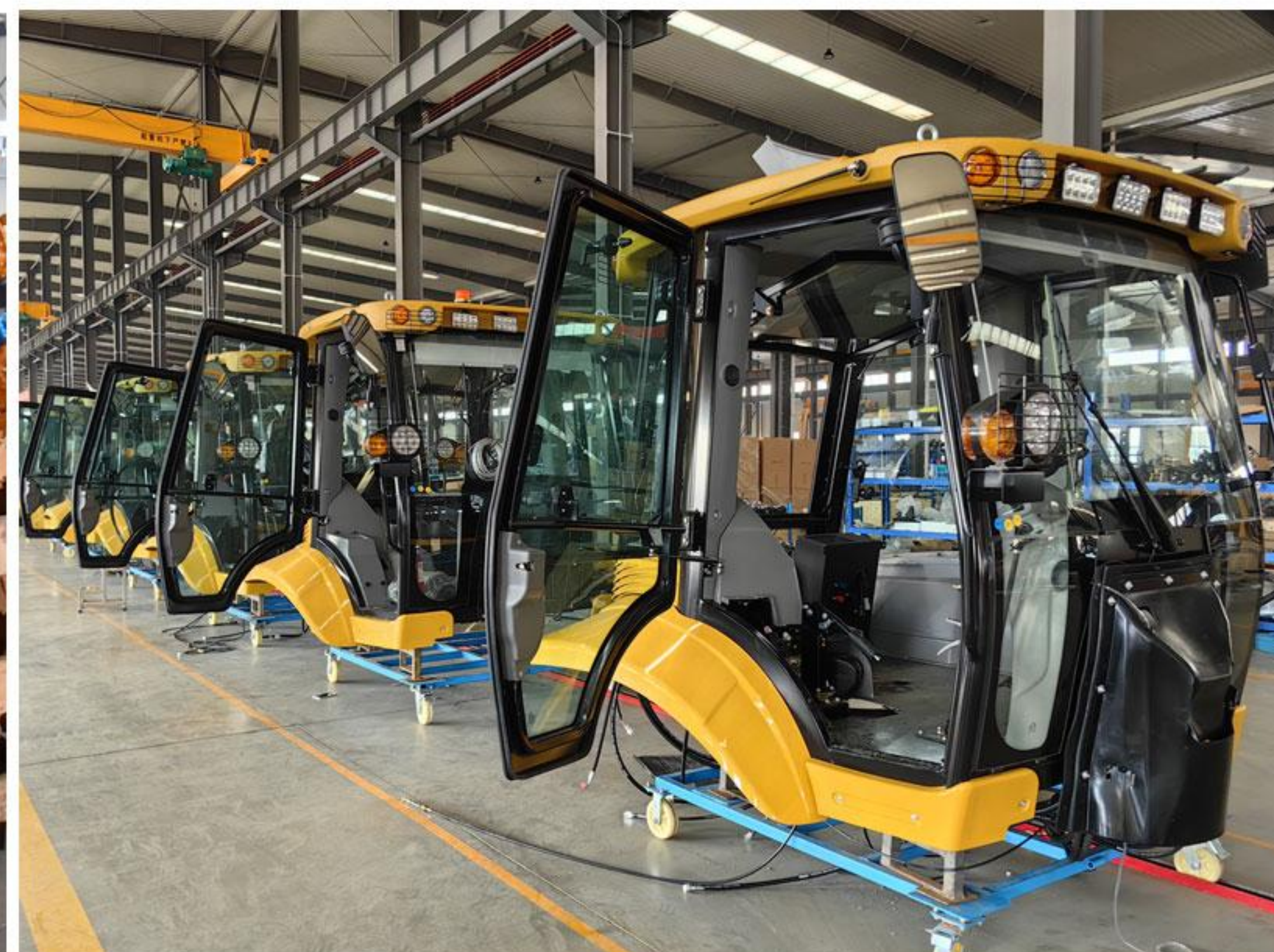
High power/low fuel consumption/  
smooth operation/low noise/comfortable operation

NO	Component	Attribute	E3CX
1	Overall Dimension	Length(with bucket on ground)	7600mm
		Overall width (at stabilizer )	2230mm
		Load Bucket width	2220mm
		Height(To the top of the cab)	3100mm
		Height(To the top of the digging pole)	3800mm
		Wheel base	2100mm
		Back wheel Tread	1750mm
		2	Main Loading Technical Specification
Operating weight	7820KG		
Rated bucket capacity	1m <sup>3</sup>		
Max. dump clearance	2720mm		
Dump reach	900mm		
Min. turning radius Outside of bucket	5410mm		
Min. turning radius Center of front wheel	4100mm		
Max lifting capability	2500KG		
Max. load breakout force	≥45KN		
3	Main Digging Technical Specification	Rated digging bucket capacity	0.3m <sup>3</sup>
		Max. digging depth	4080mm
		Max. digging radius	5600mm
		Max. dumping height	3795mm
		Max. digging force	≥44KN
		Max. Digging Height	5467mm
4	Diesel engine	Model	Wei Chai WP4G95E221
		Type	Direct injection. Turbocharged. Water cooling
		Rated output	70 kW
		Total exhaust of cylinder	4.5L
		Rated speed	2200r/min
		Max. Torque	380N.M
5	Transmission System	Torque Converter Model	Beilian
		Torque Converter Cooling type	Pressure oil circulating
		Transmission case Model	Beilian
		Transmission case Type	Synchromesh mechanical shift
		Axle and Tire Model	Yunyu
		Axle and Tire Type of main reducer	Spiral bevel gear, single stage
		Axle and Tire Main drive form	Single-stage spiral bevel gear
		Axle and Tire Type of final reducer	Single stage planetary
		Axle and Tire Final transmission form	Single-stage planetary wheel
		Gear shift position	2F、 2R Front two Rear two
		Speed (F/R)	26km/h
		Max. drawing force	≥67KN
		Size of tire Front tire	14-17.5-16PR
		Size of tire Rear tire	19.5L-24-14PR
6	Oil Capacity	Fuel(diesel)	130 L
		Engine lubricating oil	11 L
		Oil for converter and gear box	22 L
		Oil for hydraulic system	110 L
		Oil for driving axles (F/R)	7.6 L+17 L



# BACKHOE LOADER E3CX/E3CXT/E3CXL ADVANTAGE COMPARISON

NO	Configuration	E3CX	E3CXT	E3CXL
1	Engine	Weichai 70KW(or Yuchai 75KW)	Weichai 70KW	Yuchai Power 77.3KW
2	Transmission	Domestic gearbox	CARRARO torque converter CARRARO transmission	Domestic gearbox
3	Drive Axle	Feicheng Yunyun Bridge	CARRARO drive axle	Feicheng Yunyun Bridge
4	Pump	Jinan Quancheng pump	Jinan Quancheng pump	Jinan Quancheng pump
5	Steering	Eaton steering gear	Eaton steering gear	Eaton steering gear
6	Priority Valve	Eaton priority valve	Eaton priority valve	Eaton priority valve
7	Valve	/	Haihong (or HUSCO) main valve	/
8	Operation	mechanical control	mechanical control	pilot control, reverse camera
9	Tyres	Front wheels 14-17.5, rear wheels 19.5L-24	Front wheels 14-17.5, rear wheels 19.5L-24	Front wheels 14-17.5, rear wheels 19.5L-24
10	Outrigger	A/H type	A/H type	A/H type
11	Cab	ROPS&FOPS cab, warning light, air conditioner	FROPS&FOPS cab, warning light, air conditioner	Driver's cab, warning lights, Vehicle Backup Camera
12	Walking mode	Front four and rear four gears (Maximum speed of 38km/h)	Front four and rear four gears	Front four and rear four gears (Maximum speed of 38km/h)
13	Other Features	Standard triple valve and pipeline, reserved crushing hammer pipeline, standard bucket,standard rear digging arm	Standard triple valve and pipeline, reserved crushing hammer pipeline, standard bucket,standard rear digging arm	Standard triple valve and pipeline, reserved crushing hammer pipeline, standard bucket,standard rear digging arm



# BACKHOE LOADER E4CX



mechanical control

Eaton priority valve

Crab walking, front wheel steering, four-wheel steering

Jinan Quancheng pump

ROPS&FOPS cab, warning light, air conditioner,

Haihong valve

Domestic gearbox

Dry drive axle

Weichai 70KW (or Yuchai 75KW)

Eaton steering gear

Standard triple valve and pipeline, reserved crushing hammer pipeline, standard bucket, standard rear digging arm

A/H type support legs

Rear wheel 16.9-28

Tires front wheel 16.9-28



# BACKHOE LOADER E4CX- I



# BACKHOE LOADER E4CX-II

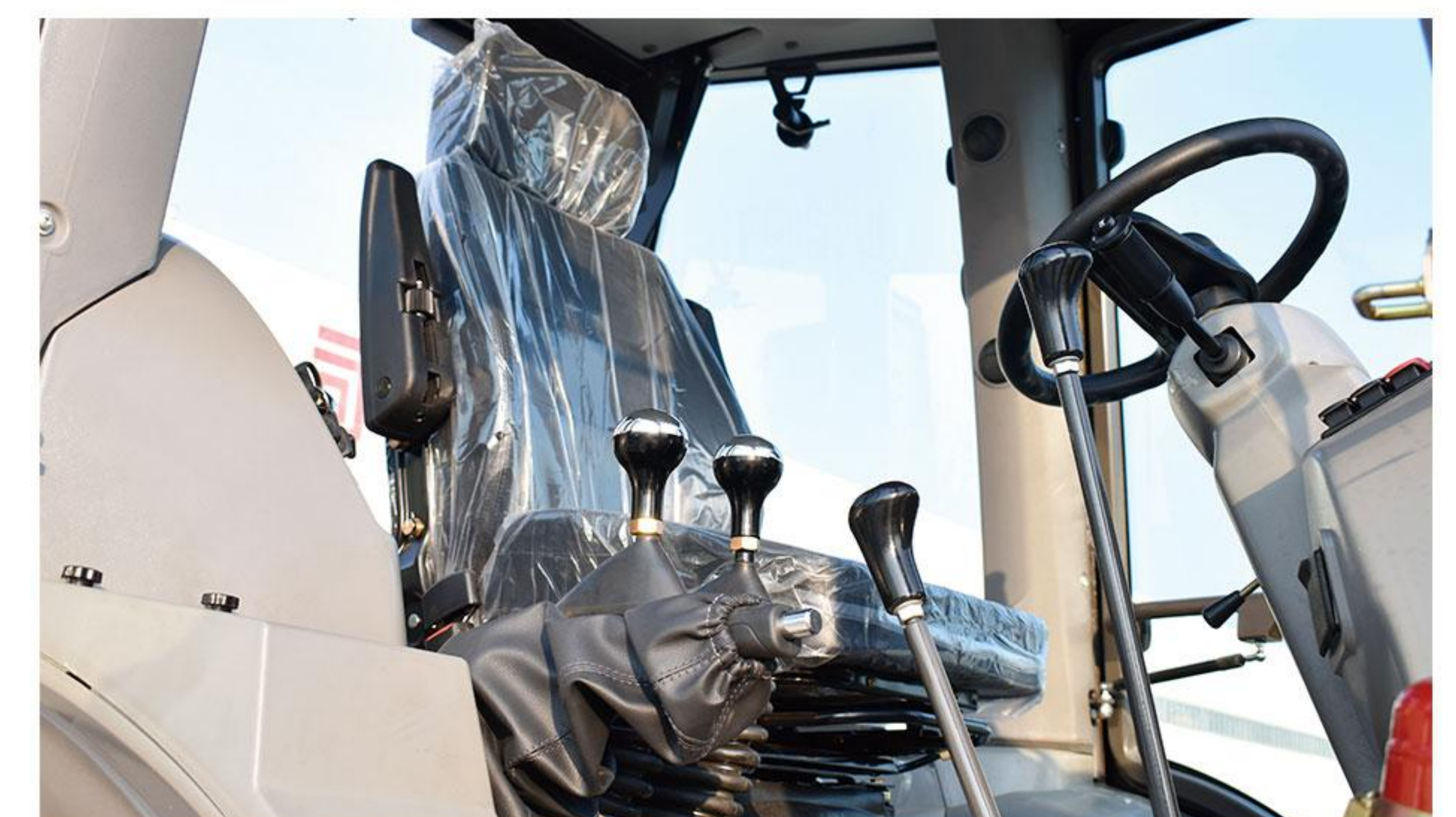


# TECHNICAL PARAMETER

## Backhoe Loader E4CX

High power/low fuel consumption/  
smooth operation/low noise/comfortable operation

NO	Component	Attribute	E4CX
1	Overall Dimension	Length(with bucket on ground)	6450±80mm
		Overall width (at stabilizer )	2490±10mm
		Load Bucket width	2490±10mm
		Height(To the top of the cab)	3120±10mm
		Height(To the top of the digging pole)	3940 ±20mm
		Wheel base	2335±10 mm
		Back wheel Tread	2139 ±10mm
2	Main Loading Technical Specification	Rated load	2500KG
		Operating weight	9120KG
		Rated bucket capacity	1.2m³
		Max. dump clearance	3050±50 mm
		Dump reach	870±20 mm
		Outside of bucket	6420±100mm
		3	Main Digging Technical Specification
Max. digging depth	3820±20 mm		
Max. digging radius	5345±20mm		
Max. dumping height	3740±20mm		
Max. digging force	1000kg		
Max. Digging Height	5470 ±20mm		
Lifting force at maximum digging radius	1220kg		
Max digging depth (telescopic arm)	4970±20 mm		
Max loading height (telescopic arm)	4983±20mm		
Max digging height (telescopic arm)	6680±20mm		
4	Diesel Engine	Model	YC4A105Z-T20
		Type	Water cooling
		Rated output	75 kW
		Total exhaust of cylinder	4.8L
		Rated speed	2200r/min
		Max. Torque	400N.M
5	Transmission System	Torque Converter Model	YJ320
		Torque Converter Cooling type	Pressure oil circulating
		Transmission case Model	15
		Transmission case Type	Synchromesh mechanical shift
		Axle and Tire Model	WZL100
		Gear shift position	4 F、 4 R Front four rear four gears
		Speed km/h	F1,5km/h; F2,10km/h; F3,18km/h; F into 4,32km/h; R1,5km/h; R2,10km/h; R3,18km/h; R4,32km/h;
		Size of tire	16.9-28
6	The hydraulic system	Working pump discharge	63ml/r
		Working pump pressure	20Mpa
		Type of steering gear	BZZ-250
		Excavating equipment (crushing hammer)Drill rod diameter	68-70mm
		Excavating equipment (crushing hammer)Pressure of work	11-14Mpa
		Excavating equipment (crushing hammer)The impact frequency	500-900
		Excavating equipment (crushing hammer)Flow range	25-45L/min
7	Oil Capacity	Excavating equipment (crushing hammer)The kinetic energy	49KN
		The hydraulic oil tank	125
		Diesel fuel tank	125



# BACKHOE LOADER E4CX/E4CX- I /E4CX- II ADVANTAGE COMPARISON

NO	Configuration	E4CX	E4CX- I	E4CX- II
1	Engine	Weichai 70KW(or Yuchai 75KW)	Weichai 70KW(or Yuchai 75KW)	Weichai 70KW(or Yuchai 75KW)
2	Transmission	Domestic gearbox	complete electronic control gearbox	CARRARO electronic transmission
3	Drive Axle	Dry drive axle	CARRARO wet drive axle (LSD limited-slip differential function)	CARRARO wet drive axle (LSD limited-slip differential function)
4	Pump	Jinan Quancheng pump	Variable Displacement Pump	Danfoss electronic control constant torque pump
5	Steering	Eaton steering gear	Eaton steering gear	Eaton steering gear
6	Priority Valve	Eaton priority valve	Eaton priority valve	Eaton priority valve
7	Valve	Haihong valve	Haihong load sensitive valve	Danfoss electro-proportional multi-way valve
8	Operation	mechanical control	pilot control	complete electrical control
9	Tyres	16.9-28	16.9-28	16.9-28
10	Outrigger	A/H type	A/H type	A/H type
11	Cab	ROPS&FOPS cab, warning light, air conditioner	ROPS&FOPS cab, warning light, air conditioner	ROPS&FOPS cab, warning light, air conditioner
12	Walking mode	Crab walking, front wheel steering, four-wheel steering	Crab walking, front wheel steering, four-wheel steering	Electrohydraulic controlled four-wheel steering mechanism,SRS
13	Other Features	Standard triple valve and pipeline, reserved crushing hammer pipeline, standard bucket,standard rear digging arm	Standard triple valve and pipeline, reserved crushing hammer pipeline, standard bucket,standard rear digging arm	Standard triple valve and pipeline, reserved crushing hammer pipeline, standard bucket,standard rear digging arm

