

Tower Crane

塔式起重机

Tower Crane With large working space, it is mainly used for vertical and horizontal conveying of materials and installation of building components in the construction of houses.



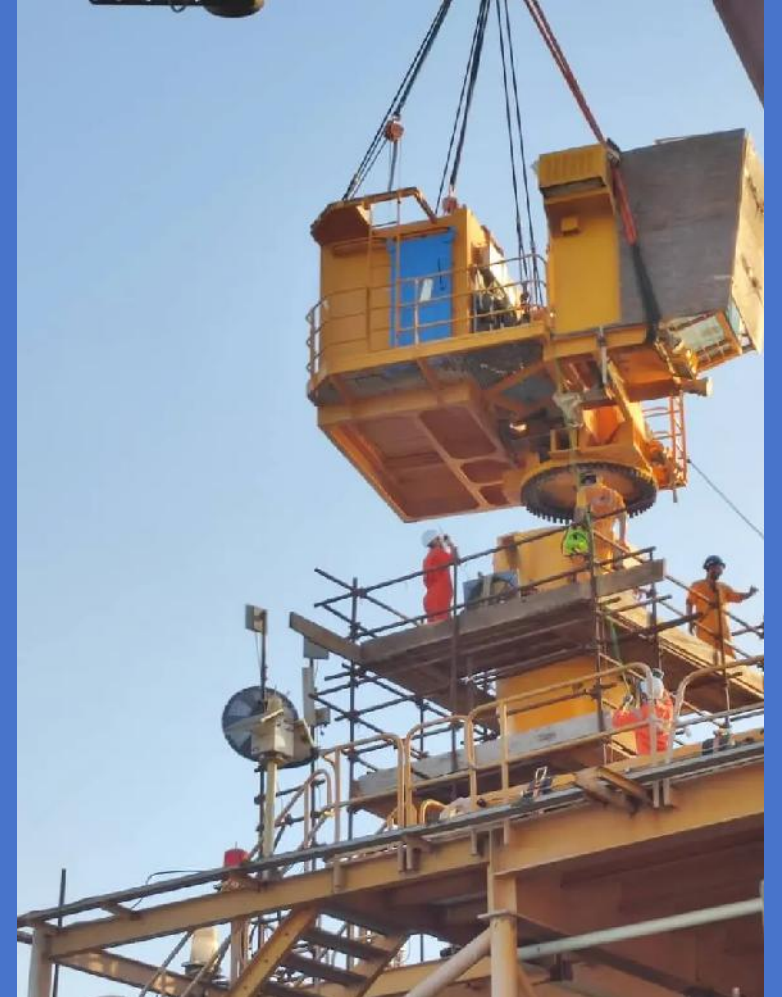
Flat Top Tower Crane
平头式塔式起重机



Luffing Tower Crane
动臂式塔式起重机



Offshore Crane
克令吊







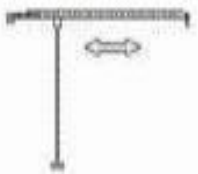
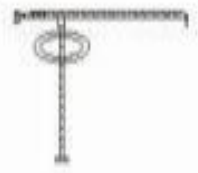
Top Kit Tower Crane
塔帽式塔式起重机



Fast Self Erecting Tower Crane
快架塔



Product Series

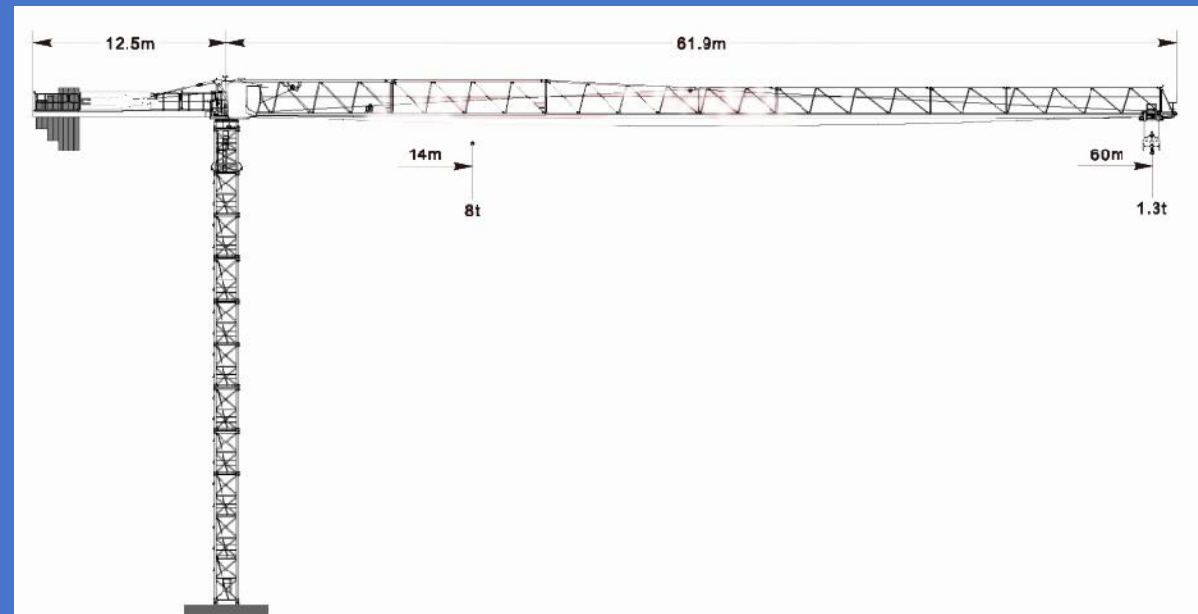
Mechanisms						KW	
	m/min	t	m/min	t			
	30LVF20	0-35	4	0-17	8	350m (5层)	30
		0-70	2	0-35	4		
	HGF3-33-20	0-39	4.0	0-20	8.0	400m (5层)	
0-80		1.8	0-38	3.6			
0-122		1.1	0-58	2.2			
	4DVF	0-40m/min					4
	4RVF	0-0.6r/min					4 x2

Flat Top Tower Crane 平头式塔式起重机

(TC6013-8, TC6015-8, TC6515-10, TC7013-12, TC7015-10, etc.)

Compact structure, stable operation, simple and convenient, suitable for low-rise buildings, reducing the requirements for the required living equipment.

TC6013-8



Powersupply

380V50Hz/400V60Hz

Necessary Electric Power

60KVA

Product Series

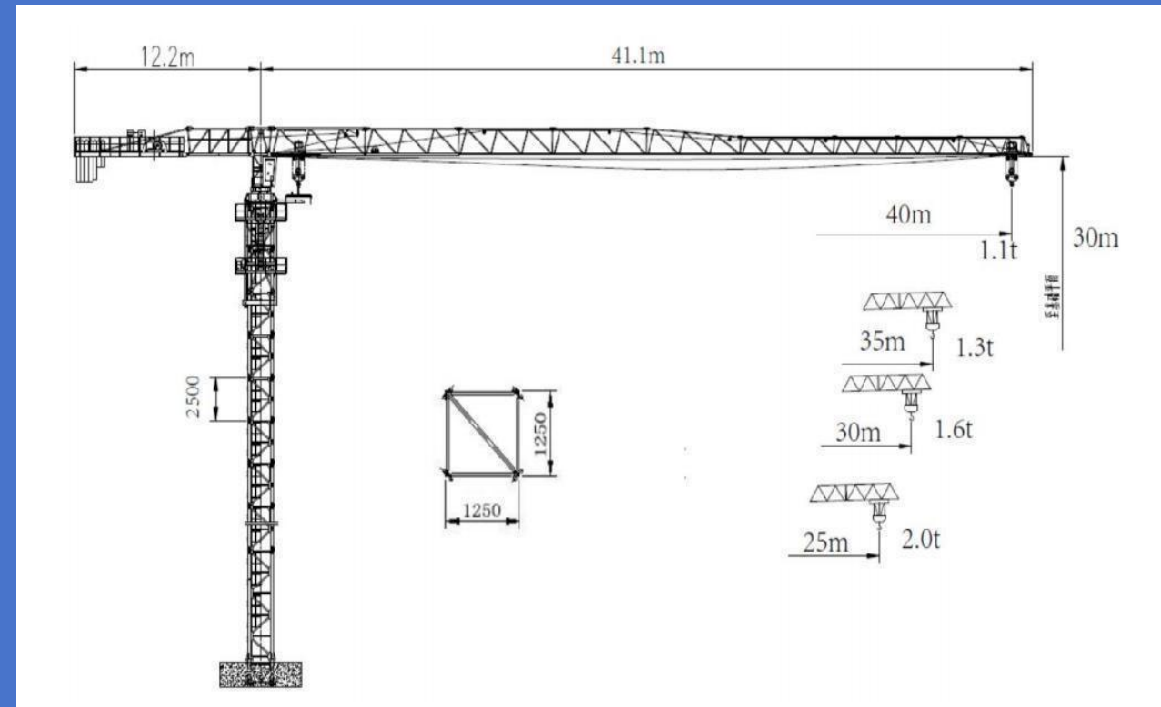
Internal Climbing Tower Crane 内爬式塔式起重机

(HT4010, HT5010, HT2510, HT6010, HT900, etc.)

It is usually placed inside the building, such as installed in the indoor elevator shaft, so it will not occupy the space around the building, which is especially suitable for narrow on-site projects.

HT4010

名称 items	单位 unit	2 倍率 a=2	4 倍率 a=4	电动机 motor
起升 Hoisting	m/min	0-70	0-35	15 kW
	t	1/2/2	2/4/4	
变幅 Trolleying	m/min	0-38		2.4 kW
回转 Slewing	r/min	0~0.6		4 kW
	N.m	2x8300,55HP100-F-195		
顶升climbing	m/min	0.4		4kW
配重 Counter weight	Jib length 40m	8.2t		/
	Jib length 35m	8.2t		/
	Jib length 30m	6.7t		/
	Jib length 25m	5.7t		/
总功率 Power Capacity	21.1 kw			



Product Series

名称 items	单位 unit	2 倍率 a=2	4 倍率 a=4	电动机 motor
起升 Hoisting	m/min	65/32/9	32/16/4.5	18/18/5 kW
	t	1.25/2.5/2.5	2.5/5/5	
变幅 Trolleying	m/min	36/18		2.2/2.8 kW
回转 Slewing	r/min	0~0.67		2X3.7 kW
	N.m	2x10000		
顶升climbing	m/min	0.4		4kW

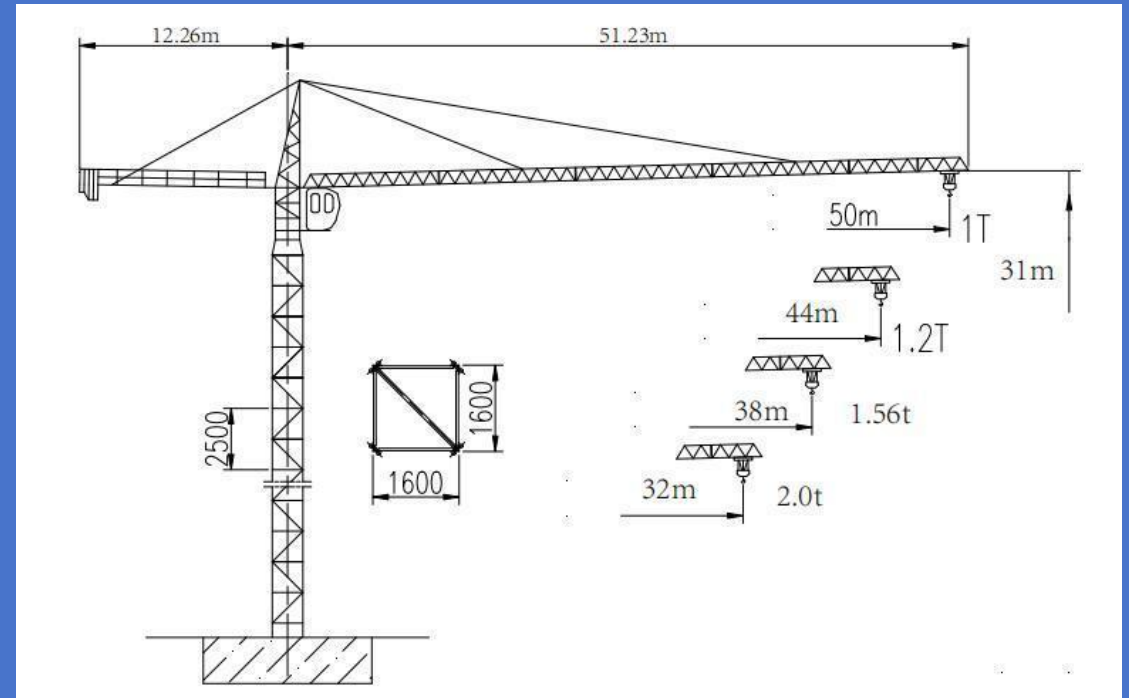
名称 items	主材规格 Main material	材质 Quality
标准节 Mast	L160X12	Q355B(16Mn)
起重臂 Jib	方管80X80X8、80X60X6	Q355B(16Mn)
过渡节 Transition mast	L140X12	Q355B(16Mn)
上下转台 Rotating Platfor	L140X12	Q355B(16Mn)
塔帽 Cap head	方管80X80X8	Q355B(16Mn)

Top Kit Tower Crane 塔帽式塔式起重机

(TC5010,TC4010,TC5013,TC6115,etc.)

The product design structure is reasonable and the appearance is beautiful. The performance parameters of the whole machine are advanced. High level of work. The driver has a broad vision.

TC5010



Product Series

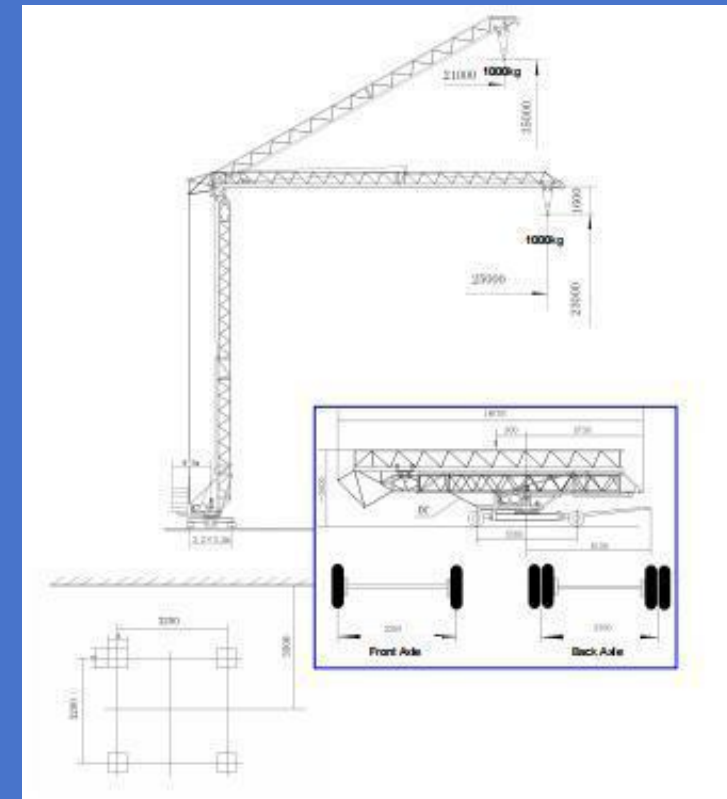
Fast Self Erecting Tower Crane 快架塔

(QTK25,QTK40,etc.)

Fast Self Erecting Tower Crane are suitable for the needs of large-area and low-rise buildings.

QTK25

Items 名称	Unit 单位	Value 价值
Lifting Moment	kN·m	250
Rated Lifting Capacity	kN	10-30
Working Radius(Level Jib/30°upwards)	m	3-25/(21)
Hoisting Height(Level Jib/30°upwards)	m	23/35
Gauge *Axle Base	m	3.2*3.2
Max. working wind scale	/	6
Dead Weight	t	10.5
Counter Weight	t	14.0
Tail Radius	m	3
Travelling Distance of Cable Drum	m	20 on each side
Rail Model	kg/m	38,43
Rated Power(380V/50Hz/3P)(Optional)	kw	24.6



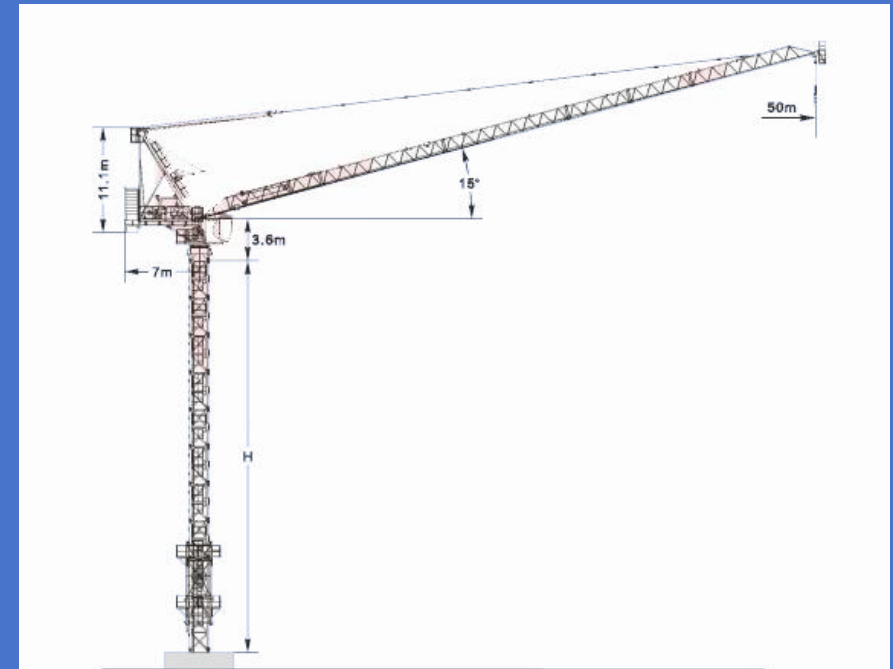
Product Series





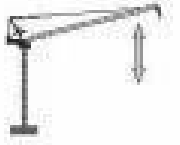


Luffing Tower Crane 动臂式塔式起重机

(QTD125-10, QTD200-12, QTD4015-6, QTD4515-8, etc.)

With large lifting weight, it can achieve load variation, small tail rotation radius, small interference, and solve the interference problem of group tower operation and narrow space operation. It is the preferred equipment for the construction of many ultra-high-rise buildings.

QTD125-10



Mechanisms								KW	
	m/min	t	m/min	t	m/min	t			
	45LVF25	0-45	5	0-33.7	7.5	0-22.5	10	600m	45
		0-90	2.5	0-67.5	3.7	0-45	5		
	HGF3-36-25	0-33	5	0-25	7.5	0-17	10	620m	36
0-66		2.4	0-50	3.6	0-33	4.8			
0-101		1.5	0-75	2.3	0-50	3			
0-111		1.4	0-83	2.0	0-55	2.7			
HGF4-43-25	0-41	5	0-31	7.5	0-20	10	620m	43	
	0-82	2.4	0-61	3.5	0-41	4.7			
	0-123	1.5	0-92	2.3	0-61	3			
	0-164	0.8	0-123	1.2	0-82	1.6			
	30DVF32	3min						30	
LGF-28-25	2min						28		
	RCV95	0-0.7 rpm						4x2	

Powersupply	380V50Hz/480V60Hz
NecessaryElectricPower	105KVA

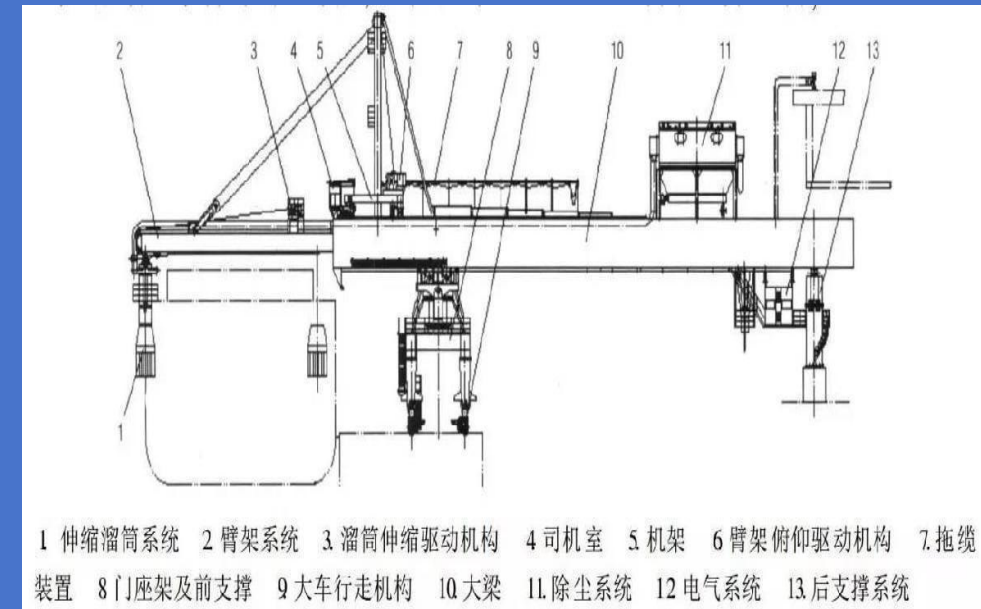
Product Series

Offshore Crane 克令吊

Ship loader is a large-scale bulk material machinery used in bulk material terminal loading.

HGQ518

Working level	A6						
Lifting capacity (t)	3.2	5	8	10	16	25	40
Group (m)	3~8.4		2.8~7.6		2.9~7.7	3.0~7.8	3.1~7.8
Luffing speed(m/min)	30	35	45		60		58
Luffing speed(m/min)	2.7		5			4.47	4.68
Spinning speed(m/min)	1.32		1~1.8			1.5	1.2
Arm length (m)	9		8				
With grab(m ³)	0.75	1.1	1.5	1.7	2		
Voltage	Three-phase communication 50Hz 380V						



Application Cases

