

# 液压夯

## HYDRAULIC PLATE COMPACTOR

### 适用对象

高速公路铁路护坡及路面的平整，工地及厂房地面平整。

### 产品特点

进口轴承，意大利节流阀、单向阀，美国的安全阀，操作稳定。旋转款的液压夯可在夯实地面时实现360度不同方向的调整，震动频率和震动力度是普通夯的2-4倍。

### Application

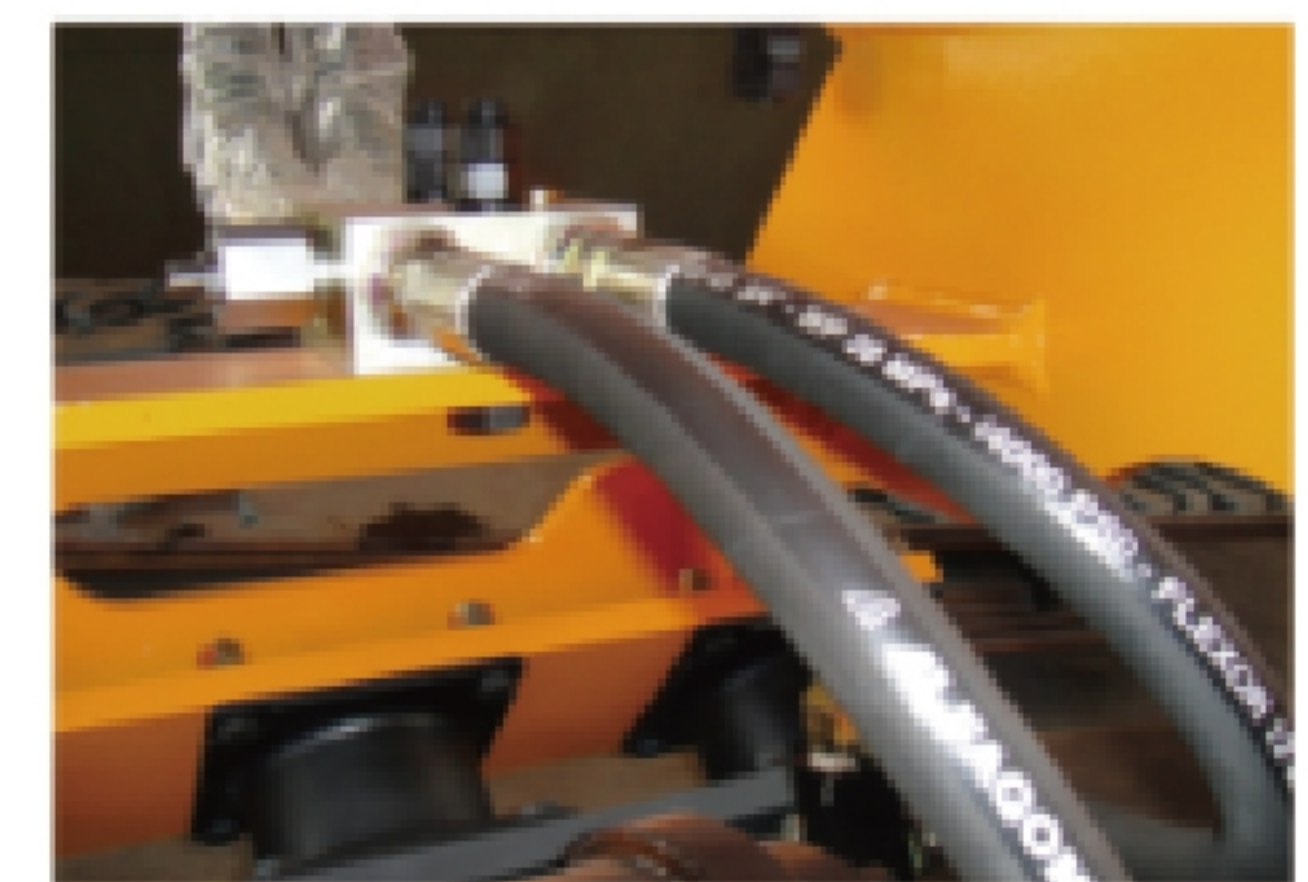
Leveling of high-speed way and railway slopes, roads, construction sites and building floors.

### Main features

Imported bearing (Japan) throttle (Italy) and safety valves(USA),stable and high efficient performance. With 360 degree rotation system, it can do job in any position. JIANGTU plate compactor performs 2-4 times better than normal compactors in compacting frequency and power.



原装进口马达，更加稳定有力  
 PERMCO motor,stable and powerful



原装进口阀安全可靠，操作方便  
 Imported relief valve protecting motor well.



减震胶块更持久耐用  
 Long service life rubber pads.

类别/ Category	Unit	JT-mini	JT-02/04	JT-06	JT-08	JT-10
总高 Height	mm	435	530	650	720	730
总宽 Width	mm	442	550	700	900	900
打击力 Impulse Force	ton	3	4	6.5	11	15
震动频率 Vibration Frequency	rpm/min	2000	2000	2000	2200	2200
油流量 Oil Flow	l/min	30-60	45-85	85-105	120-170	120-170
工作压力 Working Pressure	bar	100-130	100-130	100-150	150-200	150-200
打击面积 Bottom Measurement	mm	800*442	900*550	1160*700	1300*900	1500*1000
适配挖机 Suitable Excavator	ton	2-4	4-10	12-16	18-24	30-40
设备重量 Weight	kg	200	350-500	650-800	900-1000	1100-1300

