

# TIRETRAC

High Tech

ONE MUST BE THE LEADER  
必将成为领先者

SLAG 熔渣



QUARRY 采石场



MINING 采矿场



CONSTRUCTION 结构





One must be  
the leader

必将成为领先者



### Tyre Protection Chains

### 轮胎保护链

The tyres on wheel loaders are prone to damage on a daily basis. This can lead to equipment downtime and significant costs. With its tyre protection chains developed more than 70 years ago, the RUD Group found a solution to protect the tyre tread and walls. RUD as the global market leader commissioned a new production plant near Shanghai in China in 2012.

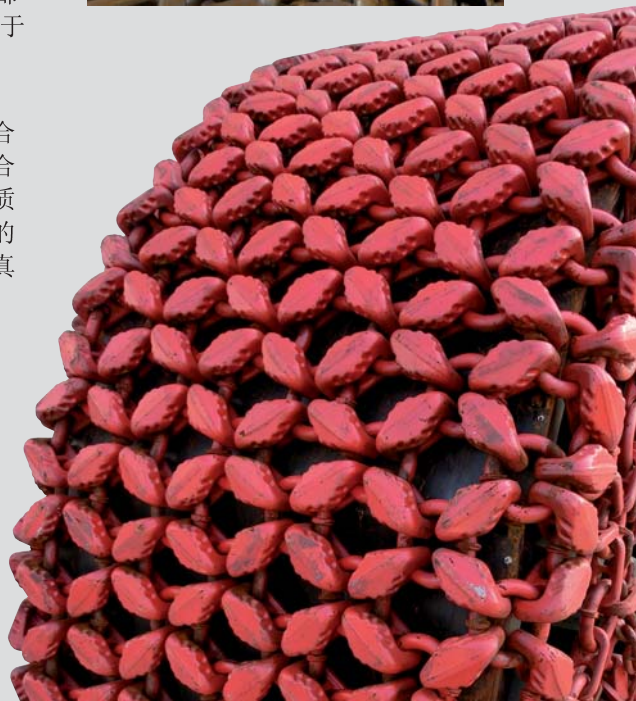
轮式装载机轮胎在日常工作中很容易受到磨损。这因此会导致设备长时间停机，造成巨大的成本损失。RUD 集团早在 70 多年前就已开发出保护轮胎表面和轮胎侧边使用这种轮胎保护链产品的解决方案。RUD 集团作为全球市场领先者自 2012 年在中国上海附近地区建立了新的生产厂，并已投入生产。

The company Tiretrac operates what is currently the most modern production plant for heavy tyre chains in all of Asia. Highly modern flash welding machines in production according to European standards are operated in 3 shifts. The entire production chain is subject to internal quality assurance. Tiretrac is a wholly-owned subsidiary of the RUD Group.

Tiretrac 公司是目前全亚洲国家生产重型轮胎链的最现代化的生产厂。拥有高度现代化的烧熔式对头焊接机，根据欧洲标准目前进行三班生产。整个生产轮胎链均在我们企业内部的质量控制下完成。Tiretrac 属于 RUD 集团的全资子公司。

We are looking forward to working with you in the future. Becoming a strategic partner of your company is our goal. Quality and service at fair prices is our objective. We work hard every day – to meet your requirements. Give us a try!

我们期待未来与贵公司携手合作。我们希望成为贵公司的战略合作伙伴。我们的遵旨是拥有高品质产品与优质服务的同时结合合理的价格。我们每天努力工作，是要真正做到满足您的需求。愿我们合作成功！





# Worldwide fields of applications.

应用领域遍及全球。



## FIELDS OF APPLICATIONS

应用领域与问题

MINING 采矿场

In underground or open pit mines, sharp-edged stones and aggressive surfaces can destroy tyres within a short period of time.

地下开采或者露天矿因锋利的石头及腐蚀的路面会在短时期内损毁轮胎。

QUARRIES 采石场

Sharp edged stones, muddy and slippery surfaces are a great hazard – even for new tyres. Equipment downtime and loss of productivity are the result of sudden tyre failure.

锋利的石头、泥泞和湿滑的路面具有极大的危害性 –即使是新轮胎因轮胎发生故障，导致设备停机，从而造成巨大的经济损失。

SLAG 熔渣

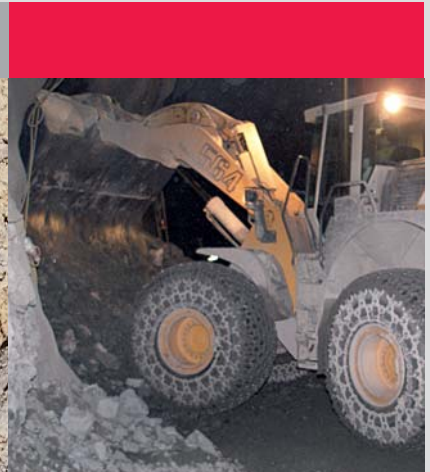
Working machines in areas with fire and hot slag leads to burnt tyres, and can even lead to the loss of equipment and human life.

工程装载机在燃烧及有熔渣采矿场会导致轮胎烧毁，甚至设备损坏和出现生命危险。

RECYCLING 回收利用

Scrap metal and recycling sites place enormous demands on tyres and equipment. Equipment downtime because of tyre failure is very common.

废旧金属回收站对轮胎和设备有巨大的需求。因轮胎损坏导致设备停机是最常见的故障。



# Two chain mesh configurations provide protection – protection+ traction

# 二种链网结构提供保护- 保护+抓地力

## ELITE 卓越的

**ELITE**  
4 links and 4 rings forming a very dense chain mesh. This configuration is specially suitable for hard, sharp-edged and aggressive surfaces.

**ELITE (卓越的)**  
4链连接和4环形成一个非常密集的链网。这种结构专门适用于坚硬、锋利和腐蚀性路面。



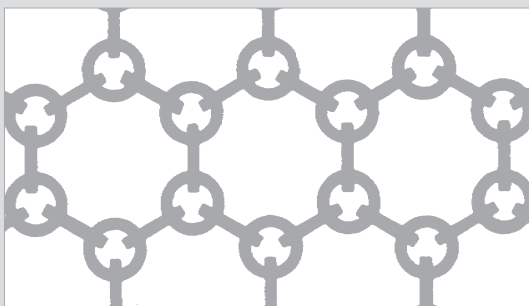
Perfect protection for mining, quarrying, slag and recycling work.

在采矿场、采石场和有熔渣路面为轮胎提供最佳保护。

## TRAC 抓地力

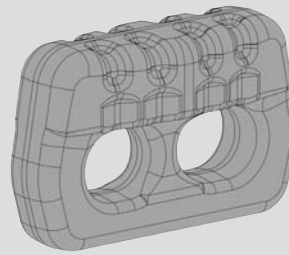
**TRAC**  
6 links and 6 rings forming a hexagonal chain mesh. This is used where greater traction joined with adequate tyre protection is required.

**TRAC (抓地力)**  
采用6链连接和6环结构，形成一种六角形链网。这种设计通常用在需要更大的抓地力和提供足够好的轮胎保护的使用场合。



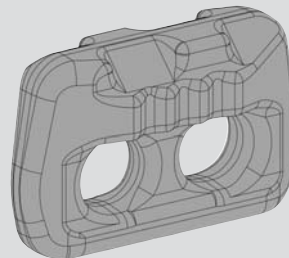
Greater traction on gradients, wet and slippery surfaces.

在大坡度、湿滑路面上的抓地力



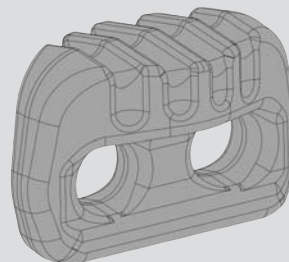
**WORLDMASTER**  
Forged wear link made of alloyed steel. This link is available in 16 mm and 19 mm. High wear resistance and long lifetime combined with the necessary traction is the result of this design.

**世界冠军**  
耐磨链采用合金钢锻造而成。此链可提供 16mm 和 19mm 的规格。其设计的突出特点是耐磨性高、使用寿命长和优良的抓地力。



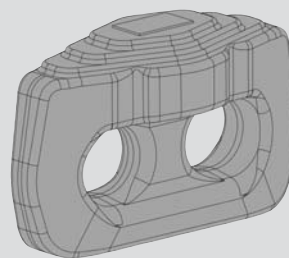
**GRIPMASTER**  
Forged wear link made of alloyed steel. This link is available in 16 mm and 19 mm. This link offers high wear volume and optimal traction.

**抓地力冠军**  
耐磨链采用合金钢锻造而成。此链可提供16mm和19mm 的规格。这种链具有很高的耐磨性和最佳的抓地力。



**SUPERMASTER**  
Forged wear link made of alloyed steel. This link is available in 16 mm and 19 mm. It offers maximum wear resistance.

**超级冠军**  
耐磨链采用合金钢锻造而成。此链可提供16mm和19mm 的规格。它具有最高的耐磨性。



**ECCOMASTER**  
Casted wear link made of alloyed steel – specially designed for all kind of applications. Available in 14 mm, 16 mm, 19 mm.

**ECCOMASTER**  
耐磨链采用合金钢铸造而成- 是专门针对不同用途设计的。可提供 14mm、16mm、19mm 的规格。

# Applications for small to large size equipment

# 应用于小型至 大型轮式装载机



	<b>WORLDMASTER</b> WORLDMASTER (世界冠军)	<b>SUPERMASTER</b> SUPERMASTER (超级冠军)	<b>GRIPMASTER</b> GRIPMASTER (抓地力冠军)	<b>ECCOMASTER</b> ECCO 冠军
	 <p><b>Link dimensions (w, h, l)</b> 链网规格(W、H、L)</p> <p>16 mm: 30, 54, 85 19 mm: 36, 64, 100</p>	 <p><b>Link dimensions (w, h, l)</b> 链网规格(W、H、L)</p> <p>16 mm: 36.3, 56, 87.3 19 mm: 53, 67.5, 97.4</p>	 <p><b>Link dimensions (w, h, l)</b> 链网规格(W、H、L)</p> <p>16 mm: 29.4, 54, 85 19 mm: 35.3, 63, 100</p>	 <p><b>Link dimensions (w, h, l)</b> 链网规格(W、H、L)</p> <p>16 mm: 34, 51, 85</p>
<b>PROTECTION</b> 保护	 <p><b>ELITE</b> Mesh opening</p> <p>卓越的链网网孔</p> <p>16 mm: 80 19 mm: 90</p>	 <p><b>ELITE</b> Mesh opening</p> <p>卓越的链网网孔</p> <p>16 mm: 64 19 mm: 73</p>	 <p><b>ELITE</b> Mesh opening</p> <p>卓越的链网网孔</p> <p>16 mm: 81 19 mm: 91</p>	 <p><b>ELITE</b> Mesh opening</p> <p>卓越的链网网孔</p> <p>16 mm: 76</p>
<b>PROTECTION + TRACTION</b> 保护+抓地力	 <p><b>TRAC</b> Mesh opening</p> <p>抓地力网孔</p> <p>16 mm: 161 19 mm: 182</p>	 <p><b>TRAC</b> Mesh opening</p> <p>抓地力网孔</p> <p>16 mm: 161 19 mm: 183</p>	 <p><b>TRAC</b> Mesh opening</p> <p>抓地力网孔</p> <p>16 mm: 161 19 mm: 183</p>	



**TIRETRAC**  
High Tech





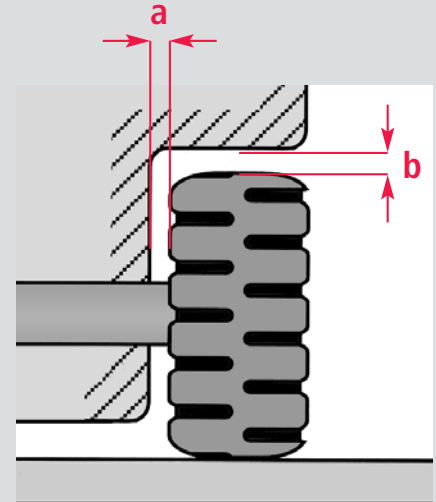
# Minimum clearance for fitting tyre protection chains

# 安装轮胎保护链的最小间隙

**a** (Inside sidewall) and **b** (Tread)

These are the minimum clearances required to fit TYRE PROTECTION CHAINS, centrifugal forces and possible dirt build-up are taken into consideration. For closer clearances please contact us for guidance.

**a** (内侧壁) 和 **b** (轮距)  
这是适用轮胎保护链需要的最小间隙, 因为需考虑离心力和可能产生淤泥积聚。若了解更小的间隙, 请联系我们, 我们愿提供技术指导。



Chain Type 保护链型号	Inside sidewall 内侧壁 <b>a</b>	Tread 轮距 <b>b</b>	Distance between tyres 轮胎之间的间距 <b>c</b>
X14	60 mm	85 mm	95 mm
X16	75 mm	100 mm	95 mm
X19	85 mm	120 mm	115 mm

### Customer questionnaire

Please complete and fax this questionnaire to us (fax +86 512-58908102), we will select for you the best suitable TYRE PROTECTION CHAIN for your application.

### 客户调查问卷

请填写这份问卷并传真给我们 (传真+86 512-58908102), 根据您的使用情况, 我们将为您选择最适合的轮胎保护链。

**Your company:** 您的公司:

Contact 您的公司: \_\_\_\_\_

Phone 电话 \_\_\_\_\_

Address 地址 \_\_\_\_\_

Fax 传真 \_\_\_\_\_

Post code 地址 \_\_\_\_\_

E-mail 电子邮箱 \_\_\_\_\_

City 城市 \_\_\_\_\_

Country 国家 \_\_\_\_\_

- Type of operation 使用类型
- Underground mining 地下开采
  - Surface mining 采矿场
  - Cement 水泥
  - Slag 熔渣
  - Quarry 采石场
  - Recycling 回收利用
  - Other 其它 \_\_\_\_\_

**Machine** 工程设备

Manufacturer 制造商 \_\_\_\_\_

Model 经营方式 \_\_\_\_\_

**Zhangjiagang Tiretrac Special Equipments Co., Ltd.**

No.18 Zhenfeng Road  
Nanfeng Town,  
Zhangjiagang City  
P.C. 215628  
P.R. CHINA  
Tel.: +86-512-5890-8102  
Mobile tel.: +86-186-6263-6774  
Fax.: +86-512-5890-8105  
Email: carlolasaponara@me.com  
: carlolasaponara@gmail.com  
Web: www.tiretrac.net

**Zhangjiagang Tiretrac Special Equipments Co., Ltd.**

振丰路18号  
南丰镇  
张家港市  
中国215628  
中华人民共和国  
电话: +86-512-58908102  
移动电话: +86-186-6263-6774  
传真: +86-512-58908105  
电子邮箱: carlolasaponara@me.com  
: carlolasaponara@gmail.com  
网址: www.tiretrac.net

## Mounting and Instructions

## 安装说明

