

VQ Vickers Cartridge

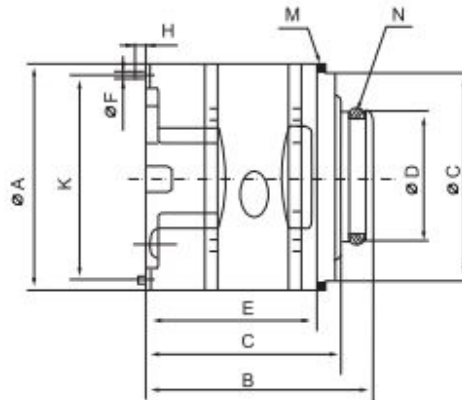


Model Descriptions:

(F3-) Front marks	PC- Pump core marks	20VQ Models	-5 Displacement Codes	-R Direction of rotation	-10 Designing No.
25VQ		10,12,14,15,17,19,21			
35VQ		21,25,30,32,35,38,45			
45VQ		42,45,50,57,60,66,75			

The rated displacement USgpm is under the conditions of 1200r/min and 0.69 Mpa(100psi).
 The specifications of double vane pumps are the same with relative series of single vane pumps.
 Please check details on the operating parameter sheets shown in
 VQ series of single vane pumps.

Installation sizes

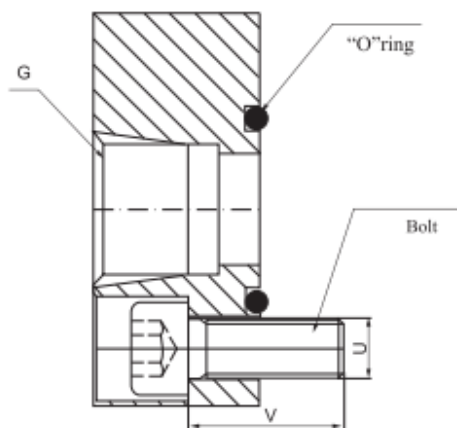
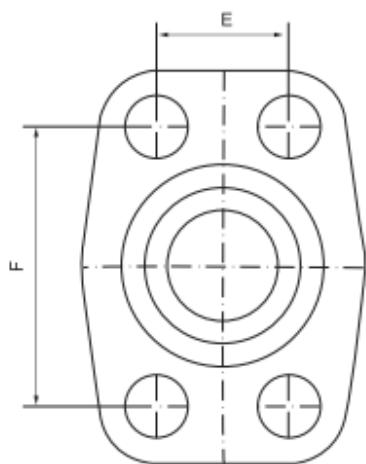


Models	A	B	C	D	E	F	G	H	K	M (ring)	N (O type ring) (Inner diamet er X

												lead wire diameter)
20VQ	82.5	81.5	70.1	47	61.5	4.8	76.2	6	73.6	82.76	40	X3.5
25VQ	96.8	98.8	87	52.2	71.2	4.8	90.5	5	88.19	97 X91	44	X3.5
35VQ	114.3	117.7	105	72.2	90.3	6.4	108	6	103.94	114.5	63.09	X3.5
45VQ	133.35	141.1	129.6	80.2	105.5	6.4	127	10	133.35	133.6	71	X3.55

Models	Spline teeth No. in rotor			
	Modulus	No. of teeth	Standard angle	Major
20VQ	48/96	30	45°	1
25VQ	48/96	40	45°	
35VQ	40/80	37	45°	
45VQ	12/24	14	30°	

V(VQ)Flange Installation sizes



Models	Demension (mm)				Bolt
	E	F	G	U	
20V (VQ)Outlet	22.22	47.6	3/4	3/8-16UNC	30
25V (VQ)Outlet	26.2	52.4	1	3/8-16UNC	30
35V (VQ)Outlet	30.2	58.7	1	7/16-14UNC	35
45V (VQ)outlet 20V	35.7	69.9	1	1/2-13UNC	40

(VQ),25V (VQ)Outlet					
35V (VQ)inlet	42.9	77.8		1/2-13UNC	40
45V (VQ)3520V (VQ),	62	106.4	2	5/8-11UNC	45
3525V (VQ)Outlet					
2520V (VQ)inlet	50.8	88.9	3	1/2-13UNC	45
4520(4525)V (VQ)inlet	69.9	120.6	3	5/8-11UNC	50
4535V (VQ)inlet	77.8	130.2	4	5/8-11UNC	50

Product link : <https://www.zjkeister.com/vq-vickers-cartridge.html>