



EXCAVATOR
MOUNTED
VIBRO

挖掘机
打桩锤

品质铸就品牌
Quality creates brand

创新引领未来
Innovation shapes future

江苏安腾工程机械有限公司

咨询热线: 400-886-9809

公司地址: 江苏省无锡市锡山区青虹路168号

JIANGSU ANTENG MACHINERY CO., LTD

Address: No.168, Qinghong Road, Xishan Economic and Technological Development Zone, Wuxi, China

网站 Website: www.antengjixie.com www.atvibro.com

ISO9001质量管理体系认证、CE 认证

Certified by ISO9001 and CE



江苏安腾工程机械有限公司

JIANGSU ANTENG MACHINERY CO., LTD

目前公司产品广泛用于房建、桥梁、道路等各类基建工程并远销美国、新加坡、印度尼西亚、菲律宾、泰国、孟加拉、马来西亚、俄罗斯、阿联酋等60多个国家。目前公司已通过三一重机、徐工挖机、卡特彼勒、小松中国、江苏现代、日立建机、神钢建机等多家主机厂的认证，形成长期的合作供货关系。

未来，安腾机械将继续秉承“创新，品质”的经验理念坚持为客户提供安全高效的产品，成为液压振动锤的领军企业。

At present, our products are widely used in various infrastructure projects such as building construction, bridges, and roads, and are exported to more than 60 countries including the United States, Singapore, Indonesia, Philippines, Thailand, Bangladesh, Malaysia, Russia, UAE and so on. Our company has passed the certification of many main construction machinery manufacturers such as Sany Heavy Machinery, XCMG Excavator, Caterpillar, Komatsu China, Jiangsu Hyundai, Hitachi Construction Machinery, Kobelco Construction Machinery, etc., and has formed a long-term cooperative supply relationship.

In the future, Anteng Machinery will continue to adhere to the concept of "innovation and quality" and insist on providing customers with safe and efficient products, becoming a leading manufacturer in piling equipment.



安腾机械是一家集液压振动锤设计、研发、生产、销售及租赁为一体的高新技术企业。公司不断致力于产品的技术创新，拥有一支专业化素质高的研发团队，目前已获得7项发明专利，62项实用新型专利。我们通过自主创新研发出了侧夹式挖机锤，成为国内首家侧夹式挖机锤生产厂家。公司率先通过了ISO9001，ISO14001国际标准质量管理体系认证，CE认证。

Anteng Machinery is a high-tech company integrating the design, R&D, manufacture, sales and rental of piling equipment. Our company is constantly committed to product technological innovation and has a professional and high-quality R&D team. It has currently obtained 7 invention patents and 62 utility model patents. We have developed the excavator mounted side grip vibro hammer through independent innovation and became the first manufacturer of excavator mounted side grip vibro hammer in China. Our company is certified by ISO9001, ISO14001 international standard quality management system certification, and CE certification.

侧夹打桩锤B系列

SIDE GRIP VIBRO HAMMER B SERIES

减震胶 Elastomer

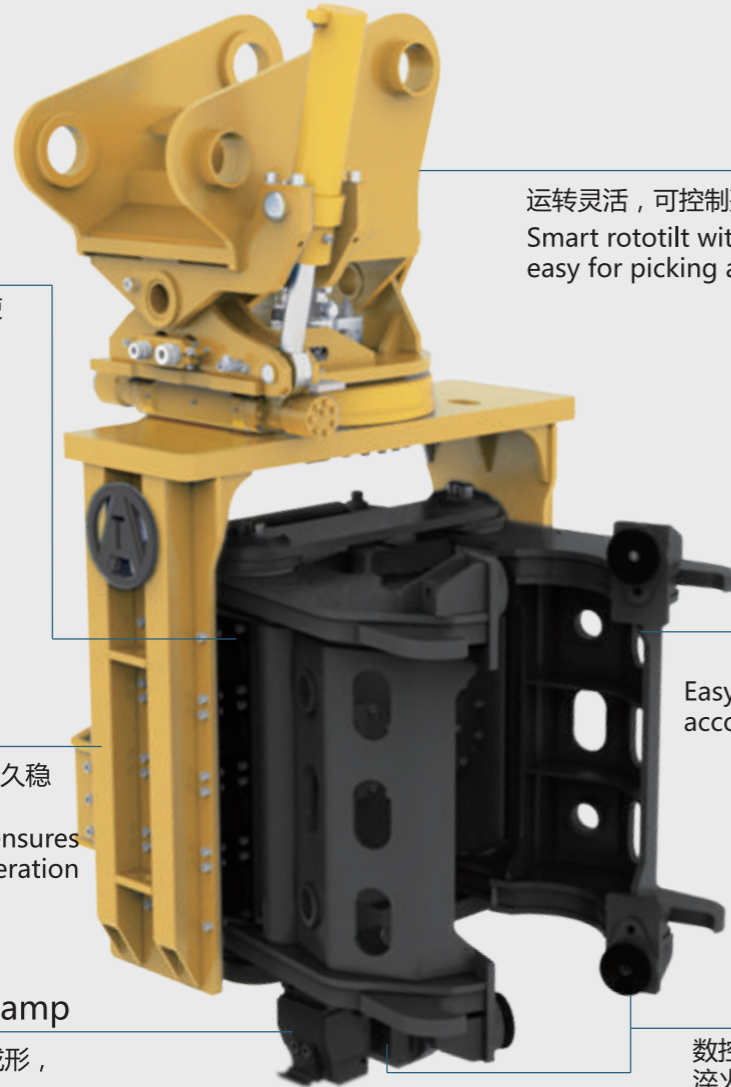
进口定制化减震胶，确保使用寿命
Imported customized, ensures its service life

齿轮箱 Gear box

高精度齿轮箱可确保设备长久稳定运行
High precision gearbox ensures long-term and stable operation

液压夹具 Bottom Clamp

夹具由高强度合金钢铸造成形，结构坚固，体积小
The clamp is made of solid block, with solid structure and small size



回转接头 Rototilt

运转灵活，可控制整机倾斜，独立夹桩定位
Smart rototilt with tilt function, easy for picking and setting the piles

侧夹 Side grip

可根据实际工况更换夹板
Easy changeable jaws adopted according to piling condition

牙板 Jaw

数控一次成型，真空热处理，高温淬火加硬；优异材质，坚固耐磨

CNC one-time forming, vacuum heat treatment, high temperature quenching and hardening, excellent material, strong and wear-resistant

侧夹打桩锤B系列技术参数

SIDE GRIP VIBRO HAMMER TECHNICAL DATA

描述 Data/Model	AT45B	AT55B	AT65B	AT75B
偏心力矩 Eccentric Moment(Kgm)	4.5	5.5	6.5	7.5
激振力 Centrifugal Force(KN)	405	495	585	675
最大激振力 Max Centrifugal force(KN)	450	550	650	750
转速 Frequency(Rpm)	2400~3000	2400~3000	2400~3000	2400~3000
侧抱夹夹紧力 Side clamp force(KN)	468	764	912	1116
底夹夹紧力 Bottom clamp force(KN)	540	540	650	650
液压系统操作压力 Hydraulic system operation pressure(Bar)	350	350	350	350
旋转/侧倾角度 Rotate/tilt degree(°)	360/±30	360/±30	360/±30	360/±30
尺寸 Size(mm)	1241*1222*2239	1320*1450*2550	1350*1490*2650	1350*1490*2650
重量 Weight(Kg)	2322	2600	3200	3500
适用挖掘机重量 Excavator Weight(T)	15~25	25~32	32~40	40~50
可打管桩直径范围 Applicable steel pipe dia scope (mm)	180~630mm			

如有需要可根据客户要求定制特殊夹具。 Clamp could be made as custom design.





可打桩长度

APPLICABLE SHEET PILE LENGTH

型号 Model	可打桩长度	6m	9m	12m	15m	18m
AT45B		■	■	■	■	■
AT55B		■	■	■	■	■
AT65B		■	■	■	■	■
AT75B		■	■	■	■	■

在地质允许的情况下，侧夹挖机锤可打桩长度。 The max pile length, when the soil is very soft.

在地质条件一般的情况下，侧夹挖机锤可打桩长度。 The max pile length, in common soil condition.

普通挖机打桩锤 EXCAVATOR VIBRO HAMMER

挖机副臂 Vice arm

可根据实际使用需求定制长度
Customized design is available

±90° 转盘

±90° Rotation disc

减震胶 Elastomer

180度可翻转吊臂

180 Rotation arm

齿轮箱 Gear box

夹板 Jaws

液压夹具 Clamp

可根据桩的类型定制夹具
Customized design clamp is available



普通挖机锤技术参数

EXCAVATOR VIBRO HAMMER TECHNICAL DATA

型号/描述 Data/Model	V-150	V-250	V-300	V-350	V-400	V-450
偏心力矩 Eccentric moment(kgm)	3.8	4.8	5.1	6	6.5	7.16
转速 Frequency(Rpm)	2800	2800	2800	2800	2800	2800
激振力 Max centrifugal force(kN)	328	380	440	517	561	618
工作压力 Max pressure(bar)	280	280	300	320	320	320
最大流量 Max oil flow(l/min)	146	164	208	234	286	286
重量 (主机+夹具) Weight (vibrator+clamp) (kg)	2050+680	2100+680	2300+680	2500+710	2530+710	2560+710
尺寸 L*W*H (mm)	1300*710*2420			1600*740*2740		
副臂 (型号/尺寸/重量) Vice arm(model/size/weight)	A200/2400*600*970mm/710kgs			A250/2870*680*970mm/890kgs		
适用挖掘机重量 Excavator Weight(T)	10-15	20-25	25-30	30-35	35-40	40-45

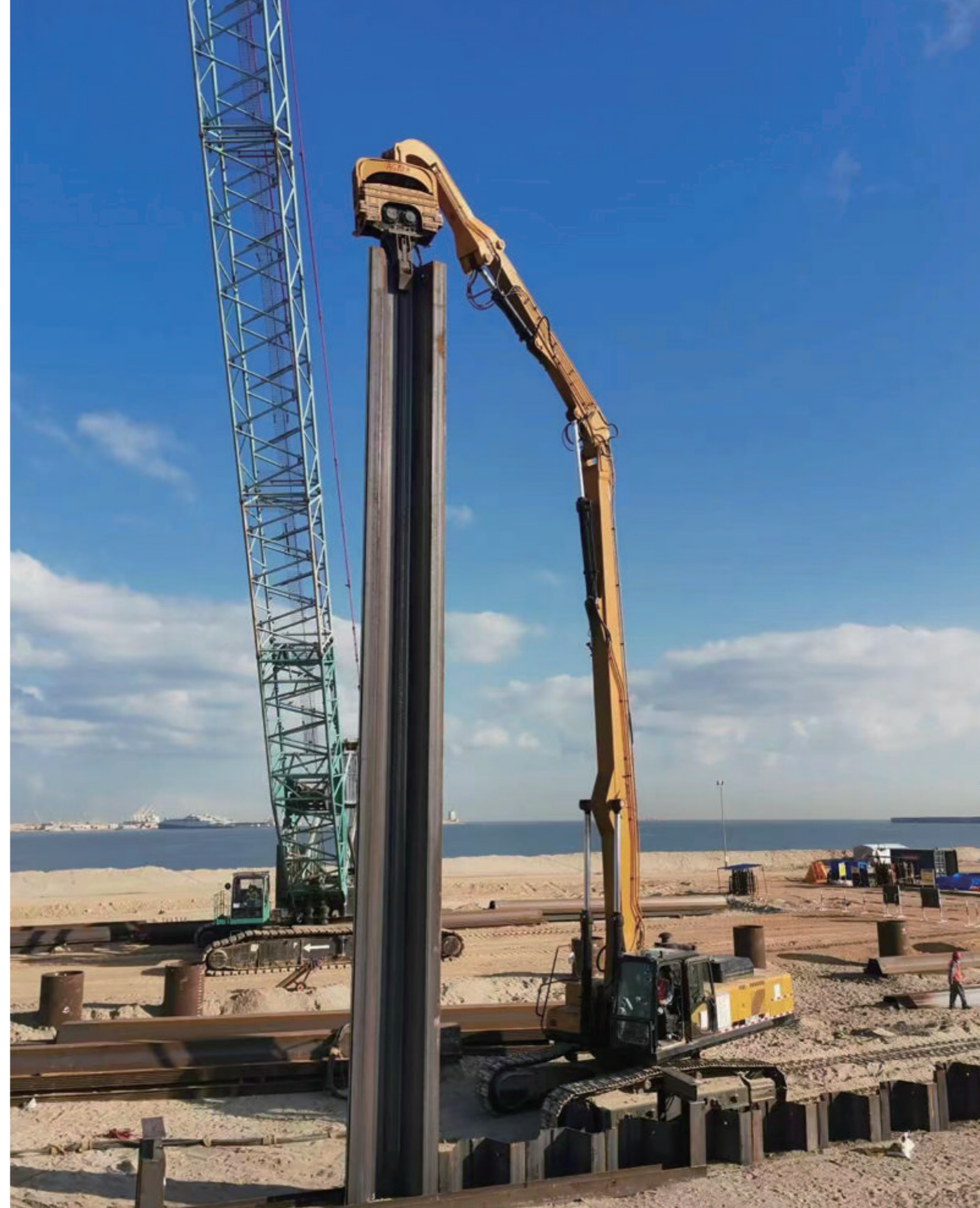


型号/描述 Data/Model	V-500	V-550	V-600	V-700	V-800	V-1000
偏心力矩 Eccentric moment(kgm)	7.6	8	9	10.5	12.8	14
转速 Frequency(Rpm)	2800	2800	2800	2700	2600	2600
激振力 Max centrifugal force(kN)	655	690	776	842	952	1041
工作压力 Max pressure(bar)	320	320	320	320	320	320
最大流量 Max oil flow(l/min)	286	325	325	350	380	468
重量 (主机 + 夹具) Weight (vibrator+clamp) (kg)	2590+710	2620+710	2650+710	3300+710	3400+710	4600+710
尺寸 L*W*H (mm)	1600*740*2740					
副臂 (型号/尺寸/重量) Vice arm (model/size/weight)	A250/2870*680*970mm/890kgs					
适用挖掘机重量 Excavator Weight(T)	50-55	50-60	60-65	60-70	65-75	75 above

可打桩长度

APPLICABLE SHEET PILE LENGTH

		6m	7m	8m	9m	12m	15m	18m
型号 Model	最大打桩长度 (以三一挖机锤为例) Max pile length (Use Sany excavator as example)							
V250	标准打桩长度 Standard max pile length							
	挖机大臂油缸下移 Excavator boom cylinder move down							
V300	标准打桩长度 Standard max pile length							
	挖机大臂油缸下移 Excavator boom cylinder move down							
	加长臂打桩 With prolonged excavator boom							
V350/V400	标准打桩长度 Standard max pile length							
	挖机大臂油缸下移 Excavator boom cylinder move down							
	加长臂打桩 With prolonged excavator boom							
V450	标准打桩长度 Standard max pile length							
	挖机大臂油缸下移 Excavator boom cylinder move down							
	加长臂打桩 With prolonged excavator boom							
V500	标准打桩长度 Standard max pile length							
	挖机大臂油缸下移 Excavator boom cylinder move down							
	加长臂打桩 With prolonged excavator boom							



工程案例 PILING PROJECTS



工程案例 PILING PROJECTS

