



*The enterprise professional for
concrete pump spare parts*



上海新瑞达实业有限公司
SHANGHAI XINRUIDA INDUSTRY CO., LTD.

Add : No.241,Ningguo Road,Shanghai,China.

Tel : 0086-21-55087709

E-mail : sale@xinruidagroup.com

Http : www.xinruidagroup.com



XINRUIDA
GROUP

上海新瑞达实业有限公司
SHANGHAI XINRUIDA INDUSTRY CO., LTD.



▶▶▶ 公司简介

Company strength to introduce

Shanghai Xinruida Group is a special company for concrete pump spare parts. The company located in Shanghai and had been in this line for over 10 years. Our products are including pipe, elbow, rubber hose, clamp, wear parts, delivery cylinder, delivery piston ...etc from Hyd. cylinder to hopper and boom. Our products are widely used for concrete pump and mixer including Putzmeister, Schwing, Sany, Zoomlion, CIFA and IHI. All spare parts had been tested by market and will supply to clients the best quality with reasonable price.

Meanwhile we also have one team which will be special for second refurbishing pump and mixer, through changing and repairing parts, old pump will be new with good working situation, also our team will supply big technology supporting to solve all problem from clients.

With unremitting efforts we have established partner relationships with many international and domestic conglomerate. Our main market covers Asia, Europe, Africa, North & South America etc. With good quality and honest service to customers, we have won good reputation widely in market. We will continue to assist our spirit to cooperate with all customers. Thank you!

- PRODUCTS LIST FOR REGULAR PARTS -----P1
- PRODUCTS LIST FOR SANY PARTS-----P2
- PRODUCT LIST FOR ZOOMLION PARTS-----P5
- PRODUCTS LIST FOR SCHWING PARTS-----P9
- PRODUCTS LIST FOR PUTZMEISTER PARTS-----P12
- PRODUCTS LIST FOR IHI PARTS-----P16
- PRODUCTS LIST FOR KOYOKUTO PARTS-----P17
- PRODUCTS LIST FOR BATCH PLANT PARTS-----P18
- PRODUCT LIST FOR MIXER PARTS-----P19
- PRACTICAL CASE-----P20



PRODUCTS LIST FOR REGLAR PARTS >>>

Dn125×3m×2m×1m 01	Dn125×3m×2m×1m 02	Dn125×3m×2m×1m 03	Dn125×3m×2m×1m 04	R275×90D 05
St52 delivery pipe-seamless	St52 delivery pipe-seam	Harden delivery pipe	Twin layer pipe	Elbow
R275×90D 06	R275×90D 07	R275×45D 08	Dn125×4m 09	Dn125×4m 10
Elbow with neck	Twin layer elbow	Elbow	End hose with 4 wire layer, single flange	End hose with 4 wire layer, double flange
DN100X5m 11	DN100X6m 12	5.5" 13	5.5" 14	5.5" 15
End hose with 4 wire layer, single flange	End hose with 4 wire layer, double flange	Snap coupling-Forging	Bolt coupling-Forging	Snap coupling with mounting-Forging
5.5" 16	5.5" 17	6"-5"×1200mm 18	6"-5"×1600mm 19	6"-5"×2500mm 20
Bolt coupling with mounting-Forging	Two bolt coupling-Forging	Reducer	Reducer	Reducer
6"-5"×3000mm 21	5.5" 22	19 23	20 24	5.5" 25
Reducer	Welding flange	Gasket seal	U clamp	Clean ball

PRODUCTS LIST FOR SANY PARTS >>>

B222100000451 01	B222100000499 02	B222100000323 03	A820606030542 04	A810301032056 05
Main haydraulic filter	Main haydraulic filter	Boom filter	Rubber Spring 45	Cutting ring SY5375.3.4.3 45
A810301032057 06	A810301032021 07	A810301032000 08	B220400000150 09	B220401000311 10
Glasses plate	Cutting ring 230	Glasses plate 230	Valve	Boom multi-way valve
B220301000267 11	B220400000111 12	B220401000254 13	B220400000031 14	B220900000004 15
Gear pump pg517b025ocdi-c517a	Steering valve	Balancing valve of boom	Overflow valve	Sheet oil separator
A820202003265 16	A820202003266 17	A819800000580 18	A820404000006 19	A820403000032 20
Wearing sleeve of front end	Wearing sleeve of front end	End bearing	Bearing	Bearing seat
A820403000031 21	A210602002210 22	A820606020006 23	A820403000033 24	A810301032055 25
Bearing saddle 45	Rolling bearing	Rubber mat 60c1816.4a- 16	Bearing seat	S-tube assembly sy5375.3.4.1 260



PRODUCTS LIST FOR SANY PARTS >>>

A820606990103 26	A820606990168 27	A810301040343 28	A820201000242 29	A820203000030 30
Piston set	Piston head	Piston head	Pressure ring	Seal end cover
A820202000079 31	B220501000283 32	B230199000009 33	A810201204017 34	A820103010024 35
Axle BUSH	Plunger motor	Rubber bladder of accumulator SB330-10A	Electric plate	Bulp baffle
A829900001484 36	A820202001242 37	A820404000091 38	A810301060034 39	B241900000100 40
Swing Arm SY5375.3.6-1 45	Connector	Upper Sphere bearing 45	Left Swing Valve Cylinder 37	HBC receiver
B229900001004 41	A820206011754 42	B220400000377 43	B220400000073 44	B220400000182 45
Hydraulic COOLER	Delivery cylinder SY5375.3.11-1 260	Control valve (five-section)	Balance valve	Electromagnetic valve
B220400000280 46	A820210000246 47	A220501000080 48	B220301000049 49	B220803000006 50
Coil	Gear, sy5390, 2, 2a-9	Motor driver	Dut rigger pump 37	Transfer case

PRODUCTS LIST FOR SANY PARTS >>>

B220301000083 51	B220301000165 52	B220803000013 53	A810301030004 54	A820301020422 55
Hyd.pump A11VLO190	Hyd. pump	Reducer	Sliding valve	Stud pin cross
56	57	58	59	60
Hyd.pump A11VLO130	Remote control	Battery Ba225030	Battery charge	Seal set for upper housing
61	62	63	64	A810301010638 65
Seal set for discharge support	Seal set for agitator	Seal set for Hyd. cylinder	Seal set for plunger cylinder	Elbow
A810301010926 66	A810301010928 67	A810301010556 68	A810301010131 69	A820206020339 70
Elbow	Reducer tube	Tube straight bend	Cutting ring SY5375.3.4.3 45	Elbow
B220301000406 71	72	A810301032001 73	A810301010907 74	A8102010028 75
HAWA Pump	Battery Ba225030	Outlet elbow	Elbow	Step controller



PRODUCT LIST FOR ZOOMLION PARTS >>>

0160462D0000 01	001696902A0000004 02	001696902A0000002 03	000190205A0000014 04	000190205A0000016 05
Delivery cylinder	Piston	Guide ring	Spectacle plate	Cutting ring
000190205A0000015 06	000190205A0200000 07	000190201A0300000 08	001690401A0000002 09	001690401A0000001 10
Rubber spring	S-pipe valve	Swing cylinder	Sleeve	Bearing pedestal1
001690401A0000010 11	001690401A0000005 12	001690401A0100001 13	001690401A0100002 14	001690401A0100003 15
L type gasket ring	Space bush	Bush	Wearable sleeve	Half shaft1
001690401A0300001 16	000190403A0000009 17	000190201A0000009 18	001690201A0000002 19	001690201A0000011 20
Half shaft2	Washer	Bearing	Transition bushing	Bushing
001690201A0000023 21	001690202A0000002 22	1030200160 23	1060000026 24	001690201A0000024 25
Stop block10	Rocker	Reducer	Water pump	Sleeve

PRODUCT LIST FOR ZOOMLION PARTS >>>

000190201A0000021 26	001690204A0000003 27	000190201A0000026 28	000190201A0000032 29	000190201A0000008 30
Bearing pedestal	Bearing pedestal	End bearing	DU bearing	Yx seal ring
000190201A0000030 31	001696901A0000001 32	001696901A0000002 33	001696102A0100006 34	001600001A0000032 35
J dustproof ring	Connection flange	Press plate	Transit bolt of switch	Fix kit
1010300646 36	1019900038 37	1019900039 38	1010300512 39	1029900009 40
Reducing valve with meter	Manometer	Pressure regulator	Solenoid valve	Solenoid coil
1140101645 41	1070000000 42	1010600044 43	1080400020 44	1080400018 45
Double outward worm joint	Pneumatic lubrication pump	Mesh filter	Eight-point distributor assembly	Double wire distributor
001690204A0000004 46	001690204A0000005 47	1020000220 48	1019900439 49	1010302328 50
Transition bushing	Ball bearing	Fan motor	Pressure regulator	Dual worm joint



PRODUCT LIST FOR ZOOMLION PARTS >>>

001690401A0000002 / 51	1050200141 / 52	001690401A0000012 / 53	1010100059 / 54	1010600139 / 55
Sleeve	Centering roller bearing	Pressure cover	Hydraulic motor	Filter
1010600144 / 56	1010600143 / 57	1069900039 / 58	1010600423 / 59	1010600044 / 60
Filter	Filter	Filter	Filter	Filter
1019900483 / 61	1010300626 / 62	1010300594 / 63	000190205A0000001 / 64	001600001A0000032 / 65
Balloon	Balance valve	Balance valve	Distributing opening	Seal set for hyd. cylinder
001600001A0000029 / 66	P01609000597 / 67	P01609000598 / 68	001693302S1700000 / 69	001693302A0505000 / 70
Seal set for swing cylinder	Seal set for discharge support	Seal set for upper housing	Elbow R200 (1174B-47D)	Elbow
001693302A0506000 / 71	001693302A0504000 / 72	001693302A0514000 / 73	001693302A1201000 / 74	001693302A0505000 / 75
Elbow R275B(550)-90	Elbow	Elbow	Elbow	Elbow

PRODUCT LIST FOR ZOOMLION PARTS >>>

001693303A0007000 / 76	001693301A0008000 / 77	001693301A0014100 / 78	1010300682 / 79	1010300774 / 80
Cone pipe	Clmap	Clmap	Valve	Valve
0010604A0006 / 81	1010000101 / 82	001690202B0300000 / 83	001693302A0601000 / 84	S0002333806 / 85
Bushing	Hyd.pump	Elbow	Elbow	CIFA delivery cylinder
Dn230 / 86	/ 87	6" / 88	Dn230 / 89	Dn230 / 90
CIFA piston	CIFA swing elbow	CIFA delivery elbow	CIFA wear plate	CIFA wear ring



PRODUCTS LIST FOR SCHWING PARTS >>>

10074767 01 10074768 02 10181938 03 10063939 04 10181916 05



WEARING INSERT
Dn200



WEARING INSERT
Dn230



WEARING INSERT
Dn250



CUTTING RING
Dn210



CUTTING RING
Dn250

10074769 06 10029138 07 10018046 08 10018029 09 10064073 10



BASE PLATE
DN200/230



KIDNEY SEALING
Dn180



HOUSING LINING
Dn180



COVER LINING



KVM37 SLEWING
SHAFT

10180090 11 10018037 12 10018047 13 10059467 14 10181912 15



S42SX SLEWING
SHAFT



BEARING BUSH
D95/108x70



BEARING BUSH



ROCK VALVE
DN210/180



ROCK VALVE
DN220-180

10035783 16 10080782 17 10094569 18 10018071 19 10118218 20



SEALING RING
Dn250



LOCKING CAP
Dn250



SLEWING CYLINDER



SLEWING LEVER
DN210/180



SLEWING PIVOT

10017555 21 10017556 22 10017557 23 10094649 24 10060528 25



CYLINDER HEAD



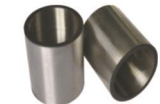
PISTON ROD



CYLINDER HEAD



CYLINDER HEAD



BUSHING

PRODUCTS LIST FOR SCHWING PARTS >>>

10006084 26 10027875 27 10019377 28 10178873 29 10077886 30



PUMPING CYLINDER
Dn200x1600



PUMPING CYLINDER
Dn200x2000



PUMPING CYLINDER
Dn230x2000



PUMPING CYLINDER
Dn250x2500



TRANSITION PIECE
DN200/200

10078435 31 10161754 32 10161634 33 10161980 34 10011849 35



TRANSITION PIECE
DN230/210



PISTON RAM Dn200



PISTON RAM Dn230



PISTON RAM Dn250



FLANGE COUPLING

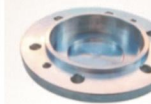
10187193 36 10061074 37 10061079 38 10061083 39 10058467 40



CONNECTION PIECE



SUPPORT



SUPPORT COVER



DISC D60/95x5



PIN 34x68

10061075 41 10061076 42 10061077 43 10061078 44 10061080 45



FLANGED SHAFT



SEALING CONE



BUSHING



SUPPORT



FLANGED SHAFT

10061082 46 10061079 47 10038387 48 10020465 49 10039180 50



FLANGED BUSHING



Agitator support
cover



GEARBOX SPARE
PARTS



MEGI CONE



HYDRAULIC MOTOR



PRODUCTS LIST FOR SCHWING PARTS >>>

10052696 / 51	10064756 / 52	10003421 / 53	10002329 / 54	10007052 / 55
MOTOR FOR SCHWING TRAIL PUMP	SEAL KITS FOR PLUNGER CYLINDER	SEAL KITS FOR MAIN CYLINDER	DUST RING	PISTON RINOT Dn120
10190119 / 56	10160911 / 57	10191556 / 58	10007924 / 59	10144775 / 60
FAN	ELECTROMAGNETIC COIL	REMOTE CONTROL BATTERY	CHECK VALVE (OLD)	CHECK VALVE (NEW)
10002989 / 61	10021810 / 62	10155110 / 63	10072694 / 64	10073397 / 65
FILTER P20923-01	FILTER D25-45-115MM	FILTER OLD MODEL	FLITER D23-50-208MM	FILTER 000-006
10165717 / 66	10190588 / 67	10004662 / 68	10029332 / 69	10043559 / 70
FILTER SMALL	FILTER NEW	PRESSURE GUAGE 0-400 BAR	WEDGE CLAMP Dn125	WEDGE CLAMP Dn150
10026159 / 71	10017547 / 72	10010479 / 73	10014526 / 74	10029635 / 75
CONNECTION BEND DN180 14°	TAPERED BEND DN180/150 90°	SCHWING ELBOW DN125*R275*90°	SCHWING ELBOW DN125*R275*45°	Schwing reducer 6"-5"*1600mm

PRODUCTS LIST FOR PUTZMEISTER PARTS >>>

C00137700 / 01	C00178700 / 02	276313000 / 03	C00137900 / 04	C00178600 / 05
Spectacle wear plate Dn200	Spectacle wear plate Dn230	Spectacle wear plate Dn250	Wear ring Dn200	Wear ring Dn230
252898002 / 06	269520004 / 07	251341000 / 08	402865 / 09	C00179300 / 10
Thrust ring Dn200	Thrust ring Dn230	S-pipe	S-pipe 80	S-pipe 90
245995006 / 11	C00293900 / 12	C00293901 / 13	228383004 / 14	240391003 / 15
Grid safety device	Grid safety device	Grid safety device Dn250	Wear sleeve	Outer housing
240620004 / 16	274893001 / 17	274889002 / 18	274884007 / 19	274877001 / 20
Outer housing	Compl. upper housing ass.	Support flange	Wear sleeve	Swinging lever (big mouth)
254424005 / 21	256300004 / 22	C40224400 / 23	262840008 / 24	264020004 / 25
Swinging lever (small mouth)	Ball cup	Plunger cylinder 160-80	Plunger cylinder 160-60	Mixer shaft, central part



PRODUCTS LIST FOR PUTZMEISTER PARTS >>>

275587002	26	441540	27	441541	28	242573007	29	222484006	30
	Mixer shaft, exterior part		Mixing paddle left-hand		Mixing paddle right-hand		Bearing flange		Bush
242574006	31	238130001	32	275587002	33	239696007	34	252200001	35
	Rubber disc		Hydraulic motor		Hydraulic motor shaft D60		Hydraulic motor sealing set		Intermediate ring
263330009	36	240112004	37	022051008	38	261520002	39	239867001	40
	Intermediate ring		Delivery cylinder Dn200x1400		Delivery cylinder Dn200x2100		Delivery cylinder Dn230x1400		Delivery cylinder Dn230x2100
274883008	41	080372004	42	080794006	43	080373003	44	080672005	45
	Delivery cylinder Dn250x2100		Delivery piston seal		Guide ring		Delivery piston seal		Guide ring
274904000	46	275059006	47	262893000	48	401503	49	433196	50
	Delivery piston seal		Guide ring		Delivery piston Dn230		Spacer flange		Cylinder tube

PRODUCTS LIST FOR PUTZMEISTER PARTS >>>

243626005	51	087968000	52	024270007	53	259755009	54	235164009	55
	Cylinder tube		Piston rod		Piston rod		Piston (2100)		Piston (1400)
258694006	56	284946003	57	409337	58	066355003	59	662587008	60
	Coupling piece G61		Switch fork G64		Electr. motor		Electr. motor		Sliding clutch
258034006	61	065644003	62	284920003	63	284501008	64	284918002	65
	Torque support		Switch fork G61		Clutch shaft G61		Gearbox Spare Parts		Switching cylinder
287955004	66	417730	67	292079001	68	277401005	69	416956	70
	Flange bearing		Foldable elbow		Delivery pipe elbow		Reducing pipe		Delivery pipe elbow
427190	71	537076	72	057153007	73	057633006	74	058102002	75
	Delivery pipe elbow		Delivery pipe elbow		Clamp coupling		Mounting coupling		Clamp coupling



PRODUCTS LIST FOR PUTZMEISTER PARTS >>>

426594 / 76 222259008 / 80



Screw coupling



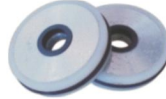
手动黄油泵



分配阀



Magnetic switch



Piston

242334000 / 81 223192009 / 85



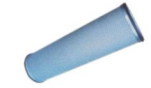
Slide



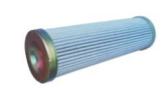
Filter element



Filter element



Filter element



Filter element

273827007 / 86 067335006 / 89



Filter element



Filter element



Coupling piece G64



Battery



Outer housing gasket set

292079001 / 93 277401005 / 94



Upper housing gasket set



Plunger cylinder seal set



Hyd.cylinder seal set



Boom cylinder seal set

PRODUCTS LIST FOR IHI PARTS >>>

DN205, DN195 / 01 DN205, DN195 / 02 DN195, DN205 / 03 90B, 100B / 04



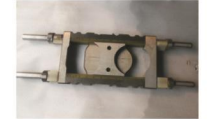
Wear plate



Wear ring



Piston



Sliding valve

DN195, DN205 / 05 90B, 100B / 06 12 hole / 07 Seal kits for Hyd. cylinder / 08



Delivery cylinder



Repair kits for sliding valve



Distributor valve



Seal kits for Hyd. cylinder

Valve / 09 C00179300 / 10 O ring for Y pipe / 11 Seal for sliding valve / 12



Valve



Y bend



O ring for Y pipe



Seal for sliding valve

Seal set for water pump / 13 Seal set for boom cylinder / 14 Elbow / 15 Elbow / 16



Seal set for water pump



Seal set for boom cylinder



Elbow



Elbow



PRODUCTS LIST FOR IHI PARTS >>>



PRODUCTS LIST FOR KOYOKUTO PARTS >>>



PRODUCTS LIST FOR BATCH PLANT PARTS >>>





PRODUCT LIST FOR MIXER PARTS >>>

PRACTICAL CASE >>>

TSB-2T 01



Weighting sensor

TSB-3T 02



Weighting sensor

SBT-1T 03



Weighting sensor

SBT-5T 04



Weighting sensor

32L10000A002023 05



Display

ZF PLM9 06



Rotary set

510606105 07



Filter for mixer

08



Cooler for mixer

09



Mechanical chute jack

Single or double 10



Control box

7m and 8m 11



Control cables

Driver shaft 12



600mm or OEM

6423-279 13



Hyd.pump

PV23 14



Hyd.pump

PV23 15



Seal kits

