

YIKDE

益凯德液压

山东益凯德液压股份有限公司
SHANDONG YIKAIDE HYDRAULIC CO.,LTD

企业介绍 >> QI YE JIE SHAO

山东益凯德液压股份有限公司座落于“孔孟之乡、礼仪之邦”的山东济宁，是一家专业的液压元件研发、制造、销售和服务于一体的技术企业。

公司占地约 2 万平方米，高科技厂房 1 万平方米，高精度加工设备 80 多台，精密检测仪器 20 多台，产品试验检测设备 20 多台，公司拥有 33 项国家专利，并荣获“国家级高新技术企业”、“省级专精特新企业”、“济宁市一企一技术研发中心企业”，通过了 ISO9001 质量体系认证。

主营产品为回转接头、多路阀、平衡阀、电磁阀、手动泵、同步阀等。液压产品广泛用于工程机械、矿山机械、特种行走机械、农林机械等行业。

Shandong Yikaide Hydraulic Co., Ltd. is located in Jining, Shandong, which is known as the "hometown of Confucius and Mencius and the land of etiquette". It is a professional technical enterprise that integrates the research and development, manufacturing, sales, and service of hydraulic components.

The company covers an area of approximately 20000 square meters, with a high-tech factory building of 10000 square meters, more than 80 high-precision processing equipment, more than 20 precision testing instruments, and more than 20 product testing and testing equipment. The company has 33 national patents and has been awarded the titles of "National High tech Enterprise", "Provincial Specialized, Refined, and New Enterprise", and "Jining City One Enterprise, One Technology Research and Development Center Enterprise", and has passed the ISO9001 quality system certification.

Our main products include rotary joints, multi way valves, balance valves, solenoid valves, manual pumps, synchronous valves, etc. Hydraulic products are widely used in industries such as engineering machinery, mining machinery, special walking machinery, and agricultural and forestry machinery. In the country and selling well in countries such as Europe, America, Southeast Asia, and Russia.

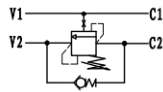


平衡阀 >> VALVES OVERCENTER

平衡阀主要用于工程机械以及靠重力下放的其它机械形式液压系统中，具有回油背压与变化负载相平衡的液压回路，以保证负载在某一位置上可靠停止和控制负载下降时运动的平衡，防止负载超速下降而引起结构件及液压件管路的损坏。

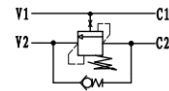
The balance valve is mainly used in the hydraulic system of construction machinery and other mechanical forms that are lowered by gravity. It has a hydraulic circuit that balances the return oil back pressure with the changing load to ensure that the load can reliably stop at a certain position and control the balance of the movement when the load drops, and prevent the damage of the structural parts and hydraulic parts pipeline caused by the excessive drop of the load.

□ 单向平衡阀 SINGLE OVERCENTER VALVE



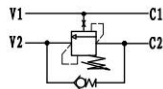
型号/TYPE	最大压力 (bar)	最大流量 (L/min)
VBCD-G12-SE	320	60
VBCD-G38-SE	320	40

□ 单向平衡阀 SINGLE OVERCENTER VALVE



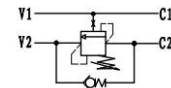
型号/TYPE	最大压力 (bar)	最大流量 (L/min)
VBCD-G12-SE A	320	60
VBCD-G38-SE A	320	40

□ 单向平衡阀 SINGLE OVERCENTER VALVE



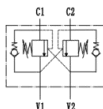
型号/TYPE	最大压力 (bar)	最大流量 (L/min)
VBCD-G12-SE-FL4	320	90

□ 单向平衡阀 SINGLE OVERCENTER VALVE



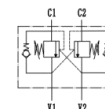
型号/TYPE	最大压力 (bar)	最大流量 (L/min)
VBCD-M22-SE-FL	320	60

□ 双向平衡阀 DOUBLE OVERCENTER VALVE



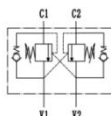
型号/TYPE	最大压力(bar)	最大流量(L/min)
VBCD-G12-DE-FL	320	60
VBCD-M18-DE-FL	320	40

□ 双向平衡阀 DOUBLE OVERCENTER VALVE



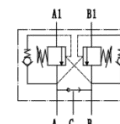
型号/TYPE	最大压力 (bar)	最大流量 (L/min)
VBCD-G12-DE	320	60
VBCD-G38-DE	320	40

□ 双向平衡阀 DOUBLE OVERCENTER VALVE



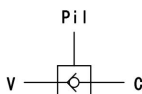
型号/TYPE	最大压力(bar)	最大流量 (L/min)
VBCD-G12-DE-A	320	60

□ 双向平衡阀 DOUBLE OVERCENTER VALVE



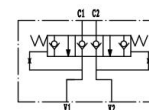
型号/TYPE	最大压力 (bar)	最大流量(L/min)
VBCD-G38-DE CC	320	40

□ 先导止回阀 PILOT CHECK VALVE



型号/TYPE	最大压力 (bar)	最大流量(L/min)
VBPSL-G38	320	30

□ 马达双向制动阀 MOTOR OVERCENTER VALVE



型号/TYPE	最大压力 (bar)	最大流量 (L/min)
MDBV-G6B-H	250	30

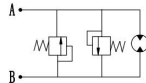


溢流阀 >> Hydraulic Safety Valve

溢流阀是一种压力控制阀，主要用于液压马达的液压回路，可作为定压溢流阀或安全阀，还可用于受到外来冲击力和惯性力的液压系统中。该阀振动小、工作稳定、安装方便，控制压力可根据用户调定。

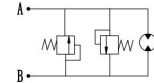
The Buffer valve is a pressure control valve, which is mainly used in the hydraulic circuit of the hydraulic motor. It can be used as a constant pressure overflow valve or safety valve, and can also be used in the hydraulic system subject to external impact and inertia force. The valve has small vibration, stable operation and convenient installation. The control pressure can be adjusted according to the user.

□ 马达双向缓冲阀 MOTOR BUFFER VALVE



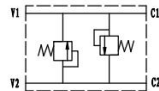
型号/TYPE	最大压力(bar)	最大流量(L/min)
SHC-H20B	300	40
SHC-H20B-a	300	40

□ 马达双向缓冲阀 MOTOR BUFFER VALVE



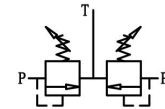
型号/TYPE	最大压力(bar)	最大流量(L/min)
SHC-H20B-6-1	300	40
SHC-H20B-1-a	300	40

□ 双向缓冲阀 BUFFER VALVE



型号/TYPE	最大压力(bar)	最大流量(L/min)
SHC-H16L-a	300	40

□ 双向缓冲阀 BUFFER VALVE



型号/TYPE	最大压力(bar)	最大流量(L/min)
VMPD-G38	300	40

▶ 液压锁 >> Hydraulic Lock

液压锁用于工程机械、起重机械的支腿回路和压力机自锁及矿山井下支架护壁千斤顶锁紧等液压系统中，为使工作机构在任意位置上停止后，不受外界负荷影响而窜动，所以采用液压锁组成锁紧系统。

The hydraulic lock is used in the hydraulic systems such as the outrigger circuit of construction machinery and lifting machinery, the self-locking of the press and the locking of the support wall jack in the mine. In order to make the working mechanism stop at any position and not move under the influence of external load, the hydraulic lock is used to form the locking system.

□ 双向液压锁 PILOT CHECK VALVE



型号/TYPE	最大压力 (bar)	最大流量(L/min)
SO-K8B-1	320	40
SO-K8L-J7	320	30

□ 双向液压锁 PILOT CHECK VALVE



型号/TYPE	最大压力 (bar)	最大流量 (L/min)
SO-K6B-3	320	10
SO-K6B-5	320	10

□ 双向液压锁 PILOT CHECK VALVE



型号/TYPE	最大压力 (bar)	最大流量 (L/min)
SO-K8L-1	300	40
SO-H10L	250	50
SO-H15L	250	80

□ 双向液压锁 PILOT CHECK VALVE



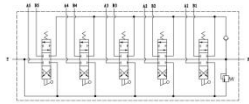
型号/TYPE	最大压力 (bar)	最大流量 (L/min)
VBPDE-G14	320	20
VBPDE-G38	320	30
VBPDE-G12	320	50



液压多路换向阀 >>

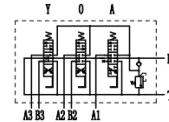
Hydraulic Multiway Directional Valve

□ 多路换向阀 MULTI WAY DIRECTIONAL VALVE



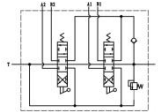
型号/TYPE	最大压力 (bar)	最大流量 (L/min)
M45/5	250	45

□ 多路换向阀 MULTI WAY DIRECTIONAL VALVE



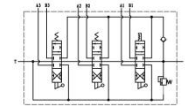
型号/TYPE	最大压力 (bar)	最大流量 (L/min)
ZDa-F15-50T	250	80

□ 多路换向阀 MULTI WAY DIRECTIONAL VALVE



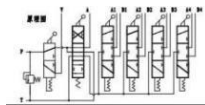
型号/TYPE	最大压力 (bar)	最大流量 (L/min)
M45/2	250	45

□ 多路换向阀 MULTI WAY DIRECTIONAL VALVE



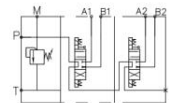
型号/TYPE	最大压力 (bar)	最大流量 (L/min)
M45/3	250	45

□ 多路换向阀 MULTI WAY DIRECTIONAL VALVE



型号/TYPE	最大压力 (bar)	最大流量 (L/min)
DCV60-6-4A	250	60

□ 电磁换向阀 SOLENOID REVERSING VALVE



型号/TYPE	最大压力 (bar)	最大流量 (L/min)
YD-BDCF24-*	250	40

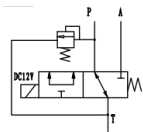


其它液压阀



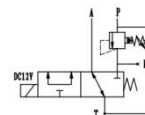
Other Hydraulic Valves

□ 先导切换阀 Pilot switching valve



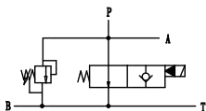
型号/TYPE	溢流压力 (bar)	电磁铁电压 (V)
YXD03-3	30	DC 12V

□ 减压切换阀 PRESSURE SWITCHING VALVE



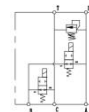
型号/TYPE	减压阀设定压力(bar)	电磁铁电压 (V)
YRS-5	25	DC 12V

□ 电磁切换溢流阀 (单振阀) Vibration valve



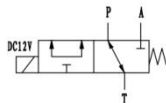
型号/TYPE	开启压力 (bar)	电磁铁电压 (V)
YCVB-R1	80-180	DC 12V

□ 电磁切换溢流阀 (双振阀) Vibration valve



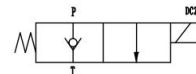
型号/TYPE	额定压力 (bar)	电磁铁电压 (V)
YCVB-R2	210	DC 12V

□ 电磁换向阀 Solenoid directional valve



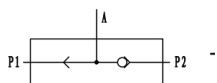
型号/TYPE	电磁铁电压 (V)	最大流量(L/min)
YSV23-12 /C	DC 12V /24V	12

□ 电磁换向阀 Solenoid directional valve



型号/TYPE	电磁铁电压 (V)	最大流量 (L/min)
YSV22-30	DC 24V	30

□ 梭阀 SHUTTLE VALVE



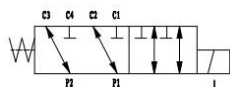
型号/TYPE	最大压力 (bar)	最大流量 (L/min)
SF-L-1	315	20
SF-L-2	315	120

□ 截止阀 STOP VALVE



型号/TYPE	最大压力 (bar)	最大流量 (L/min)
YEGV-G38	315	40

□ 油路选择阀 OIL WAY SELECTION VALVE



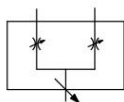
型号/TYPE	最大压力 (bar)	最大流量 (L/min)
MOP06-12	250	40

□ 油路选择阀 OIL WAY SELECTION VALVE



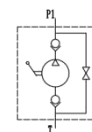
型号/TYPE	最大压力 (bar)	最大流量 (L/min)
MOP10-12	250	80

□ 分流集流阀 DIVERTER VALVE



型号/TYPE	同步误差	公称流量 (L/min)
FJLZ-L15H	3%	30-50

□ 手动泵 HAND PUMP



型号/TYPE	排量	卸荷阀
YPM-50SN	50ml/次	有

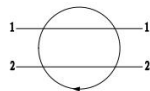


回转接头 >> Hydraulic Swivel Joint

液压旋转接头，主要用于挖掘机、起重机、高空作业车、平地机、塔吊等机械的整个液压系统中，连接整个液压系统中固定与旋转部分的液压气动管路，使管路上、下两部分可以360°自由地相对回转运动而不发生干涉。

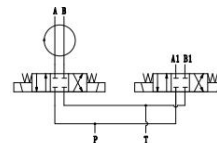
Hydraulic rotary joint is mainly used in the whole hydraulic system of excavator, crane, aerial work vehicle, grader, tower crane and other machinery. It connects the hydraulic and pneumatic pipelines of the fixed and rotating parts of the whole hydraulic system, so that the upper and lower parts of the pipeline can rotate 360° freely relative to each other without interference.

□ 电液回转接头 ELECTRO-HYDRAULIC SWIVEL



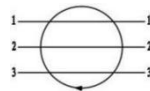
型号/TYPE	最大压力 (bar)	最大流量 (L/min)
YHZ-2-9SR4	250	60

□ 电磁阀组 2-WAY SOLENOID VALVE GROUP



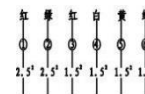
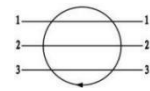
型号/TYPE	最大压力 (bar)	最大流量 (L/min)
YHZ-2-7MSB1	320	20

□ 电液回转接头 ELECTRO-HYDRAULIC SWIVEL



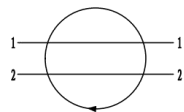
型号/TYPE	最大压力 (bar)	最大流量 (L/min)
YHZ-3-1SR6	250	50

□ 电液回转接头 ELECTRO-HYDRAULIC SWIVEL



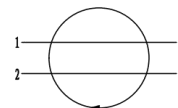
型号/TYPE	最大压力 (bar)	最大流量 (L/min)
YHZ-3-2SR6	250	80

□ 2路回转接头 2-WAY SWIVEL



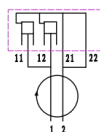
型号/TYPE	最大压力 (bar)	最大流量 (L/min)
YHZ-2-6	320	35

□ 2路回转接头 2-WAY SWIVEL



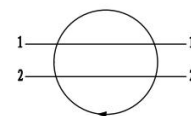
型号/TYPE	最大压力 (bar)	最大流量 (L/min)
YHZ-2-5	320	35

□ 2路回转接头 2-WAY SWIVEL



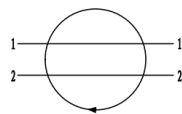
型号/TYPE	最大压力 (bar)	最大流量 (L/min)
YHZ-2-3	320	50

□ 2路回转接头 2-WAY SWIVEL



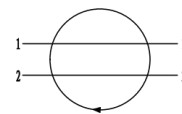
型号/TYPE	最大压力 (bar)	最大流量 (L/min)
YHZ-2-10	320	150

□ 2路回转接头 2-WAY SWIVEL



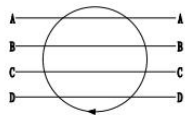
型号/TYPE	最大压力 (bar)	最大流量 (L/min)
YHZ-2-9	250	80

□ 2路回转接头 2-WAY SWIVEL



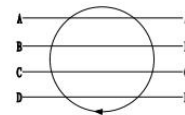
型号/TYPE	最大压力 (bar)	最大流量 (L/min)
YHZ-2-1	320	20

□ 4路回转接头 4-WAY SWIVEL



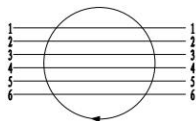
型号/TYPE	最大压力 (bar)	最大流量 (L/min)
YHZ-4-1	250	80

□ 4路回转接头 4-WAY SWIVEL



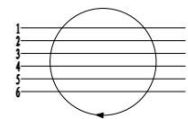
型号/TYPE	最大压力(bar)	最大流量 (L/min)
YHZ-4-2	250	40

□ 6路回转接头 6-WAY SWIVEL



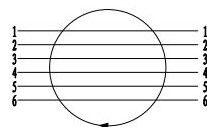
型号/TYPE	最大压力 (bar)	最大流量 (L/min)
YHZ-6-1	250	25

□ 6路回转接头 6-WAY SWIVEL



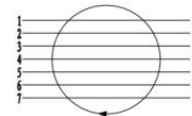
型号/TYPE	最大压力 (bar)	最大流量 (L/min)
YHZ-6-3N	250	25

□ 6路回转接头 6-WAY SWIVEL



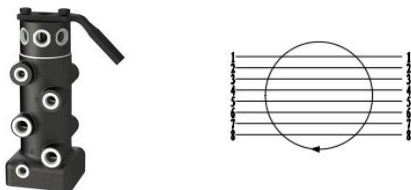
型号/TYPE	最大压力 (bar)	最大流量 (L/min)
YHZ-6-9	250	25

□ 7路回转接头 7-WAY SWIVEL



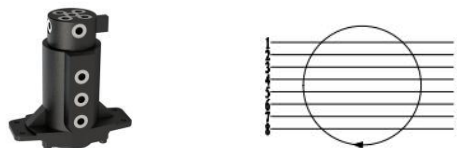
型号/TYPE	最大压力 (bar)	最大流量 (L/min)
YHZ-7-1	250	25

□ 8路回转接头 8-WAY SWIVEL



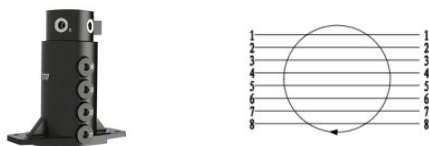
型号/TYPE	最大压力 (bar)	最大流量 (L/min)
YHZ-8-7	320	80

□ 8路回转接头 8-WAY SWIVEL



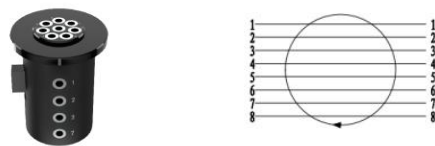
型号/TYPE	最大压力 (bar)	最大流量 (L/min)
YHZ-8-5	250	25

□ 8路回转接头 8-WAY SWIVEL



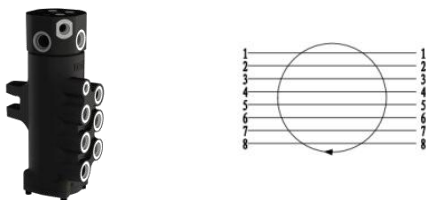
型号/TYPE	最大压力 (bar)	最大流量 (L/min)
YHZ-8-1B	250	25

□ 8路回转接头 8-WAY SWIVEL



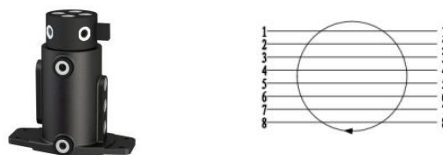
型号/TYPE	最大压力 (bar)	最大流量 (L/min)
YHZ-8-3	250	25

□ 8路回转接头 8-WAY SWIVEL



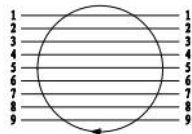
型号/TYPE	最大压力 (bar)	最大流量 (L/min)
YHZ-8-8	320	90

□ 8路回转接头 8-WAY SWIVEL



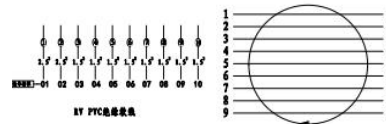
型号/TYPE	最大压力 (bar)	最大流量 (L/min)
YHZ-8-9	250	30

□ 9 路回转接头 9-WAY SWIVEL



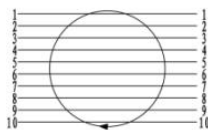
型号/TYPE	最大压力 (bar)	最大流量 (L/min)
YHZ-9-1	250	30

□ 9 路电液回转接头 9-WAY SWIVEL



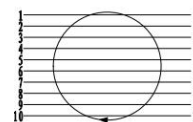
型号/TYPE	最大压力 (bar)	最大流量 (L/min)
YHZ-9-2SR12	250	60

□ 10 路回转接头 10-WAY SWIVEL



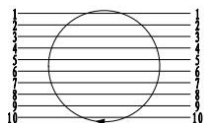
型号/TYPE	最大压力 (bar)	最大流量 (L/min)
YHZ-10-1	250	30

□ 10 路电液回转接头 10-WAY SWIVEL



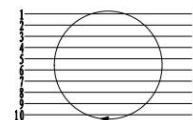
型号/TYPE	最大压力 (bar)	最大流量 (L/min)
YHZ-10-2	250	30

□ 10 路回转接头 10-WAY SWIVEL



型号/TYPE	最大压力 (bar)	最大流量 (L/min)
YHZ-10-3	320	40

□ 10 路电液回转接头 10-WAY SWIVEL



型号/TYPE	最大压力 (bar)	最大流量 (L/min)
YHZ-10-4	250	30