

地址(Add): 河北省廊坊市安次区工业园安泰道12号  
NO.12 AnTai Road, AnCi Industrial Park, Langfang City, China.  
电话(Tel): 0316-2579706 传真(Fax): 0316-2577376  
手机(Cell): 18518788866 13780463482  
网址(Web): www.qmgj.com 邮编(Post Code): 065000  
本公司保留更新改样技术规范 and 配置的权利  
而无需另行通知并免费。  
样本中可能有打印错误。

**廊坊市秋田岩土工程机械有限公司**  
LANGFANG QIUTIAN GEO-ENGINEERING MACHINERY CO., LTD

## 公司简介 COMPANY PROFILE

廊坊市秋田岩土工程机械有限公司是在廊坊市奔龙机电设备有限公司的基础上重新组建的,座落于京津走廊的“明珠之城”——廊坊市,环境优美、交通便利,距首都北京和天津市各50公里,区位优势明显。

秋田岩土专业设计和制造钻机设备,为我们的客户解决各类工作需要,包括用于边坡稳定和现代化地基建设的锚固钻孔,旋喷注浆,隧道冷冻钻孔,螺旋钻孔和微型桩。我们的钻机在世界各地的桥梁,铁路,地下管线,高速公路,隧道和建筑中得到了广泛的应用。秋田岩土拥有经验丰富,技术精湛的工人和工程师,其中大部分来自著名的钻探研究机构,自七十年代初以来为钻探需求提供解决方案。

秋田岩土持续为世界范围内的客户提供高质量的产品和全心全意的服务。

LANGFANG QIUTIAN GEO-ENGINEERING MACHINERY CO., LTD. is of reconstruction from Langfang Bealong mechanical and electric equipment co., LTD. located at Langfang city, the "bright pearl city" of Beijing & Tianjin corridor, with beautiful environment, convenient traffic facilities and distinct regional advantages. 50 Km distance both to capital Beijing & Tianjin.

Our company expertises designing and manufacturing drilling equipment for our customer's solutions of all needed jobs such as anchors for slope stabilization and modern foundation execution, jet grouting, freezing borehole drilling in tunnel, auger boring as well as micropile. Our drilling rigs found their usage to bridges, railways, underground lines, motorways, tunnels and buildings all over the world. QIUTIAN is staffed with experienced and skilled workers and engineers most of them coming from well-known drilling research institution, which provide solution for drilling requests since early seventies.

QIUTIAN keeps serving worldwide customers with high quality products and with our heart and soul.



# BHD-175 型锚固钻机



| 基本参数                                           |                            |
|------------------------------------------------|----------------------------|
| 额定功率 Rated power (KW)                          | 55+55+18.5+2.2             |
| 履带型号 Caterpillar Band Model No.                | LG-135                     |
| 驱动装置 Motor                                     | 双速 Double-speed            |
| 行走速度 Tramping speed (m/h)                      | 580/820                    |
| 接地比压 Ground pressure (N/cm <sup>2</sup> )      | 5.68                       |
| 最大爬坡角度 Gradeability (°)                        | 25                         |
| 低档回转速度 Rotation rate at low gear (r/min)       | 0-36, 0-72                 |
| 高档回转速度 Rotation rate at high gear (r/min)      | 0-36/66/79<br>0-72/132/158 |
| 高速回转扭矩 Torque range at high gear (Nm)          | 5800/11600                 |
| 低速回转扭矩 Torque range at low gear (Nm)           | 6800/13600                 |
| 冲击力 Impact work (N·m)                          | 750                        |
| 冲击频率 Percussion frequency (min <sup>-2</sup> ) | 1400                       |
| 给进行程 Feed stroke(mm)                           | 3500                       |
| 给进力 Feed force(kN)                             | 38                         |
| 回拉力 Retraction force(kN)                       | 76                         |
| 给进速度 Feed rate(m/min)                          | 0-18.5<br>0-75             |
| 回拉速度 Retraction rate(m/min)                    | 0-9.5<br>0-38.5            |
| 给进机构型式 Pattern                                 | 油缸+链条 Cylinder + Chain     |
| 夹持范围 Clamp range(mm)                           | 60-219                     |
| 最大可过直径 Maximum passing diameter(mm)            | 260                        |
| 运输状态尺寸 Dimension(mm)                           | 7000x2200x2900             |
| 重量 Weight(T)                                   | 11                         |

地址:河北省廊坊市安次区工业园安秀道12号  
 电话(Tel):0316-2579706 传真(Fax):0316-2577376  
 邮编(Postcode):065000 网址(Website):www.qtmgzj.com  
 手机(Mobile):18518788866 13780463482



## BHD-175

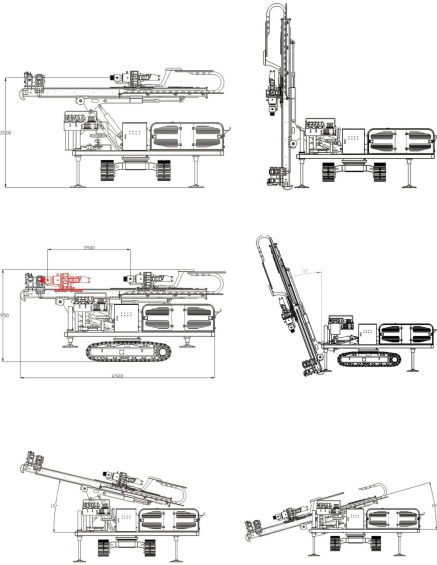
BHD-175全液压锚固钻机,配有中心回转转盘,更适合多工位钻孔施工。它结构紧凑,充分满足多工法的小型地质工程、岩土及岩锚孔钻孔、土锚钉孔钻孔、树根桩钻孔等不同工况及工法的多项施工工艺要求。施工效率高,结构稳定性好。

BHD-175 hydraulic anchor drilling rig with center rotating table is suitable for multi-position drilling works. With compact and sturdy structure, it can be used for anchor borehole, anchor nail borehole and root pile borehole drilling with multiple drilling techniques at higher drilling efficiency.

“精于钻”  
“岩”  
“千锤百转”



廊坊市秋田岩土工程机械有限公司  
LANGFANG GIUTIAN GEO-ENGINEERING MACHINERY CO., LTD



廊坊市秋田岩土工程机械有限公司  
LANGFANG GIUTIAN GEO-ENGINEERING MACHINERY CO., LTD



廊坊市秋田岩土工程机械有限公司  
LANGFANG GIUTIAN GEO-ENGINEERING MACHINERY CO., LTD

# BHD-180G 型锚固钻机



| 基本参数                                           |                                 |
|------------------------------------------------|---------------------------------|
| 发动机型号 Engine Model No.                         | QS85.9-C180                     |
| 排放等级 Emission level                            | III                             |
| 额定功率 Rated power (kW)                          | 132kW @2200rpm                  |
| 履带型号 Caterpillar Band Model No.                | LG-135                          |
| 驱动装置 Motor                                     | 双速 Double-speed                 |
| 行走速度 Tramping speed (km/h)                     | 2.1/3.0                         |
| 接地比压 Ground pressure (N/cm <sup>2</sup> )      | 5.3                             |
| 最大爬坡角度 Gradeability (°)                        | 25                              |
| 高档回转速度 Rotation rate at high gear (r/min)      | 0-80, 0-160                     |
| 低档回转速度 Rotation rate at low gear (r/min)       | 0-55, 0-110                     |
| 高档回转扭矩 Torque range at high gear (Nm)          | 5800/13600                      |
| 低档回转扭矩 Torque range at low gear (Nm)           | 6800/13600                      |
| 冲击力 Impact work (N·m)                          | 750                             |
| 冲击频率 Percussion frequency (min <sup>-1</sup> ) | 1350                            |
| 给进行程 Feed stroke (mm)                          | 3500                            |
| 给进力 Feed force (kN)                            | 38                              |
| 回拉力 Retraction force (kN)                      | 76                              |
| 给进速度 Feed rate (m/min)                         | 0-16<br>0-63                    |
| 回拉速度 Retraction rate (m/min)                   | 0-8.5<br>0-32                   |
| 给进机构型式 Pattern                                 | 油缸+链条<br>Hydro-cylinder + Chain |
| 夹持范围 Clamp range (mm)                          | 60-219                          |
| 最大可钻直径 Maximum passing diameter (mm)           | 260                             |
| 运输状态尺寸 Dimension (mm)                          | 6700x2280x2600                  |
| 重量 Weight (T)                                  | 11                              |

地址:河北省廊坊市安次区工业园安秀道12号  
 电话(Tel):0316-2579706 传真(Fax):0316-2577376  
 邮编(Postcode):065000 网址(Website):www.qtmgzj.com  
 手机(Mobile):18518788866 13780463482



## BHD-180G

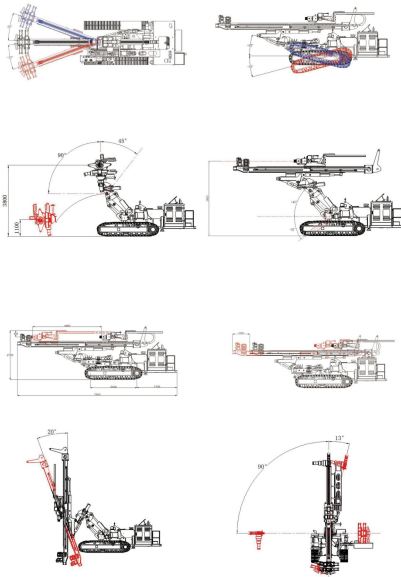
BHD-180G采用摆架结构设计,更适于多方位角度的施工要求,同时具备土锚施工的高转速要求,操作灵活,钻速更高。

BHD-180G hydraulic anchor drilling rig with its articulation system finds its usage at multi-position and multi-angle drilling works with easy operation. The rotation speed of its rotary head is much higher so that keeps its penetration speed much faster.

“精于钻”  
“转”  
“千锤百”



廊坊市秋田岩土工程机械有限公司  
 LANGFANG QIUTIAN GEO-ENGINEERING MACHINERY CO., LTD



廊坊市秋田岩土工程机械有限公司  
 LANGFANG QIUTIAN GEO-ENGINEERING MACHINERY CO., LTD



廊坊市秋田岩土工程机械有限公司  
 LANGFANG QIUTIAN GEO-ENGINEERING MACHINERY CO., LTD

# BHD-180X2 型锚固钻机

| 基本参数                                           |                                 |
|------------------------------------------------|---------------------------------|
| 发动机型号 Engine Model No.                         | QS85.9-C180 III                 |
| 电动机功率 Power of electric motor (kW)             | 90KW+15KW                       |
| 额定功率 Rated power (kW)                          | 132kW @2200rpm                  |
| 履带型号                                           | LG-154                          |
| 驱动装置 Motor                                     | 双速 Double-speed                 |
| 行走速度 Tramping speed (km/h)                     | 1.8/2.7                         |
| 接地比压 Ground pressure (N/cm <sup>2</sup> )      | 5.8                             |
| 最大爬坡角度 Gradeability (°)                        | 25                              |
| 高档回转速 Rotation rate at high gear (r/min)       | 0-80, 0-160                     |
| 低档回转速 Rotation rate at low gear (r/min)        | 0-55, 0-110                     |
| 高速回钻扭矩 Torque range at high gear (Nm)          | 5800/11600                      |
| 低速回钻扭矩 Torque range at low gear (Nm)           | 6800/13600                      |
| 冲击力 Impact work (N·m)                          | 750                             |
| 冲击频率 Percussion frequency (min <sup>-1</sup> ) | 1350                            |
| 给进行程 Feed stroke (mm)                          | 3500                            |
| 给进力 Feed force (kN)                            | 38                              |
| 回拉力 Retraction force (kN)                      | 76                              |
| 给进速度 Feed rate (m/min)                         | 0-16<br>0-63                    |
| 回拉速度 Retraction rate (m/min)                   | 0-8.5<br>0-32                   |
| 给进机构型式 Pattern                                 | 油缸+链条<br>Hydro-cylinder + Chain |
| 夹持范围 Clamp range (mm)                          | 60-219                          |
| 最大可通过直径 Maximum passing diameter (mm)          | 260                             |
| 运输状态尺寸 Dimension (mm)                          | 8200X2280X2800                  |
| 重量 Weight (T)                                  | 16                              |

地址:河北省廊坊市安次区工业园安秀道12号  
 电话(Tel):0316-2579706 传真(Fax):0316-2577376  
 邮编(Postcode):065000 网址(Website):www.qtmgzj.com  
 手机(Mobile):18518788866 13780463482



## BHD-180X2

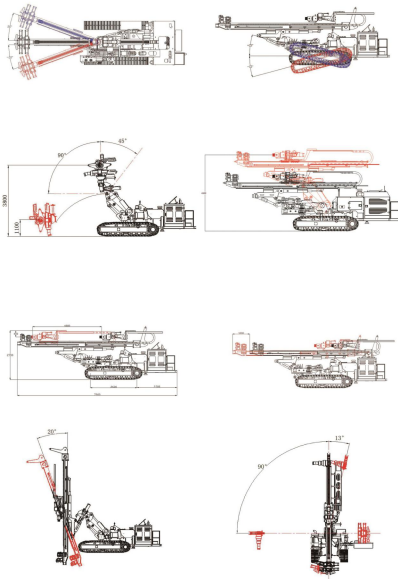
BHD-180X2混合动力型锚固钻机。它采用电动机和柴油机两种动力驱动方式,使其工作更高效,更环保。电动机驱动方式,能满足在人口密集的施工场地,要求钻机无排放、噪音小的工作需要。同时也能使其在供电不方便的施工工地转换为柴油机驱动方式顺利施工。此款钻机适应范围更广,更能为施工客户降低施工成本。

The BHD-180X2 engine and electric motor driven hybrid anchor drilling rig. It driven either with diesel engine or electric motor, make it work more efficiently and more environmental friendly. With electric motor driven mode the drill rig can be operated without noisy and harmful emission, suitable to work in densely populated construction site. When electric power supply is not convenient the drive mode can be shifted to diesel engine. The usage of this drill rig is much wider. And the operation cost of this rig is much lower for the construction customers.

精于钻“岩”  
千锤百“转”



廊坊市秋田岩土工程机械有限公司  
LANGFANG GIUTIAN GEO-ENGINEERING MACHINERY CO., LTD.



廊坊市秋田岩土工程机械有限公司  
LANGFANG GIUTIAN GEO-ENGINEERING MACHINERY CO., LTD.



廊坊市秋田岩土工程机械有限公司  
LANGFANG GIUTIAN GEO-ENGINEERING MACHINERY CO., LTD.

# BHD-210 型锚固钻机



| 基本参数                                           |                              |
|------------------------------------------------|------------------------------|
| 发动机型号 Engine Model No.                         | Q585.9-C210                  |
| 排放等级 Emission level                            | III                          |
| 额定功率 Rated power (kW)                          | 154kW@2200rpm                |
| 履带型号 Caterpillar Band Model No.                | LG-154                       |
| 驱动装置 Motor                                     | 双速 Double-speed              |
| 行走速度 Tramping speed (km/h)                     | 1.7/2.5                      |
| 接地比压 Ground pressure (N/cm <sup>2</sup> )      | 5.9                          |
| 最大爬坡角度 Gradeability (°)                        | 25                           |
| 回转速度 Rotation rate/min (r/min)                 | 0-88, 0-132<br>0-44, 0-66    |
| 高速回转扭矩 Torque range at high gear (Nm)          | 8600                         |
| 低速回转扭矩 Torque range at low gear (Nm)           | 15000                        |
| 冲击力 Impact work (N·m)                          | 750                          |
| 冲击频率 Percussion frequency (min <sup>-1</sup> ) | 1200                         |
| 给进行程 Feed stroke (mm)                          | 4200                         |
| 给进力 Feed force (kN)                            | 55                           |
| 回拉力 Retraction force (kN)                      | 90                           |
| 给进速度 Feed rate (m/min)                         | 0-18<br>0-55                 |
| 回拉速度 Retraction rate (m/min)                   | 0-11<br>0-33                 |
| 给进机构型式 Pattern                                 | 油缸+链条 Hydro-cylinder + Chain |
| 夹持范围 Clamp range (mm)                          | 60-219                       |
| 最大可通过直径 Maximum passing diameter (mm)          | 260                          |
| 运输状态尺寸 Dimension (mm)                          | 8200x2280x2800               |
| 重量 Weight (T)                                  | 14.5                         |

地址:河北省廊坊市安次区工业园安秀道12号  
 电话(Tel):0316-2579706 传真(Fax):0316-2577376  
 邮编(Postcode):065000 网址(Website):www.qtmngzj.com  
 手机(Mobile):18518788866 13780463482



## BHD-210

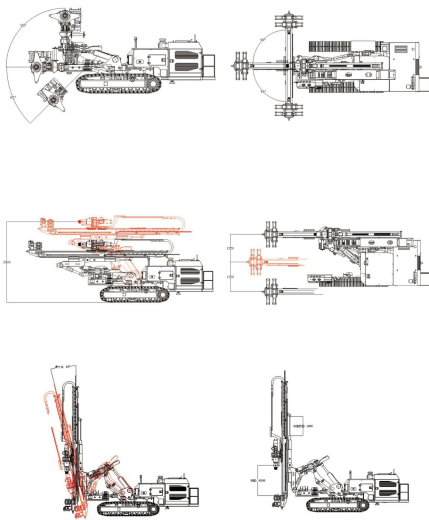
BHD-210全液压锚固钻机, 增强了功率输入, 其输出功率更强, 更适于较复杂地层施工, 效率更高。

Bhd-210 full hydraulic anchor drilling rig has enhance its power input and output power. It is more suitable for complex formation construction and has higher efficiency.

精于钻“岩”  
千锤百“转”



廊坊市秋田岩土工程机械有限公司  
LANGFANG GIUTIAN GEO-ENGINEERING MACHINERY CO., LTD.



廊坊市秋田岩土工程机械有限公司  
LANGFANG GIUTIAN GEO-ENGINEERING MACHINERY CO., LTD.



廊坊市秋田岩土工程机械有限公司  
LANGFANG GIUTIAN GEO-ENGINEERING MACHINERY CO., LTD.

# BHD-260 型锚固钻机



| 基本参数                                           |                                       |
|------------------------------------------------|---------------------------------------|
| 发动机型号 Engine Model No.                         | QSC8.3-C260                           |
| 排放等级 Emission level                            | III                                   |
| 额定功率 Rated power (kW)                          | 194kW @2200rpm                        |
| 履带型号 Caterpillar Band Model No.                | LG-154                                |
| 驱动装置 Motor                                     | 双速 Double-speed                       |
| 行走速度 Tramping speed (km/h)                     | 2.2/3.2                               |
| 接地比压 Ground pressure (N/cm <sup>2</sup> )      | 5.8                                   |
| 最大爬坡角度 Gradeability (°)                        | 25                                    |
| 回转速度 Rotation rate (r/min)                     | 0-100                                 |
| 高速回转扭矩 Torque range at high gear (Nm)          | 9900                                  |
| 低速回转扭矩 Torque range at low gear (Nm)           | 17000                                 |
| 冲击功 Impact work (N·m)                          | 1180                                  |
| 冲击频率 Percussion frequency (min <sup>-1</sup> ) | 1250                                  |
| 给进行程 Feed stroke (mm)                          | 4000                                  |
| 给进力 Feed force (kN)                            | 100                                   |
| 回拉力 Retraction force (kN)                      | 100                                   |
| 给进速度 Feed rate (m/min)                         | 0-12                                  |
|                                                | 0-54                                  |
| 回拉速度 Retraction rate (m/min)                   | 0-12                                  |
|                                                | 0-54                                  |
| 给进机构型式 Pattern                                 | 马达+减速机+链条<br>Motor + Gear box + Chain |
| 夹持范围 Clamp range (mm)                          | 60-219/89-273                         |
| 最大可通过直径 Maximum passing diameter (mm)          | 300                                   |
| 运输状态尺寸 Dimension (mm)                          | 7800x2280x2700                        |
| 重量 Weight (T)                                  | 14                                    |

地址:河北省廊坊市安次区工业园安秀道12号  
 电话(Tel):0316-2579706 传真(Fax):0316-2577376  
 邮编(Postcode):065000 网址(Website):www.qtmgzj.com  
 手机(Mobile):18518788866 13780463482



## BHD-260

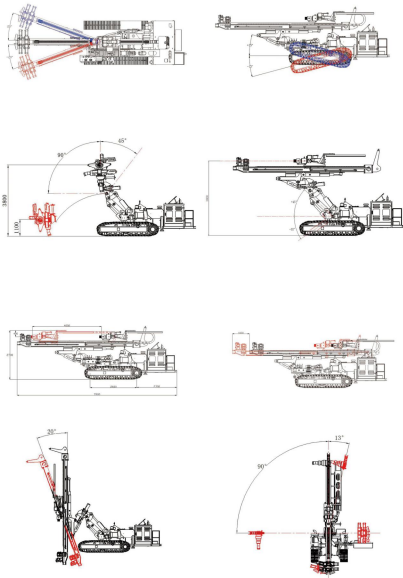
BHD-260全液压锚固钻机, 配备功率更大, 输出能力更强, 在坚硬地层及卵石层施工更能显示其功效。

BHD-260 hydraulic anchor drilling rig with more powerful engine, ensure its powerful output. It can be used to drill with efficiency in harder formations such as formations with pebble and boulder.

精于钻“岩”  
千锤百“转”



廊坊市秋田岩土工程机械有限公司  
LANGFANG QIUTIAN GEO-ENGINEERING MACHINERY CO., LTD.



廊坊市秋田岩土工程机械有限公司  
LANGFANG QIUTIAN GEO-ENGINEERING MACHINERY CO., LTD.



廊坊市秋田岩土工程机械有限公司  
LANGFANG QIUTIAN GEO-ENGINEERING MACHINERY CO., LTD.

# BHD-360 型锚固钻机



| 基本参数                                            |                     |
|-------------------------------------------------|---------------------|
| 额定功率 Rated power ( kW )                         | 264KW @2100RPM      |
| 履带型号 Caterpillar Band Model No.                 | LG-171              |
| 驱动装置 Motor                                      | 双速马达                |
| 行走速度 Traming speed ( Km/h )                     | 1.6/2.4             |
| 接地比压 Ground pressure ( N/cm <sup>2</sup> )      | 6.5                 |
| 最大爬坡角度 Gradeability ( ° )                       | 25                  |
| 回转速度 Rotation rate at high gear ( r/min )       | 0-62/124<br>0-41/82 |
| 高速回转扭矩 Torque range at high gear ( Nm )         | 13500               |
| 低速回转扭矩 Torque range at low gear ( Nm )          | 27000               |
| 冲击力 Impact work ( N·m )                         | 1180                |
| 冲击频率 Percussion frequency ( min <sup>-2</sup> ) | 1200                |
| 给进行程 Feed stroke(mm)                            | 4200                |
| 给进力 Feed force(kN)                              | 220                 |
| 回拉力 Retraction force(kN)                        | 220                 |
| 给进速度 Feed rate(m/min)                           | 0-12.5<br>0-66      |
| 回拉速度 Retraction rate(m/min)                     | 0-12.5<br>0-66      |
| 给进机构型式 Pattern                                  | 马达+减速机+链条           |
| 夹持范围 Clamp range(mm)                            | 60-219/89-273       |
| 最大可通过直径 Maximum passing diameter(mm)            | 300                 |
| 运输状态尺寸 Dimension(mm)                            | 9200*2540*3150      |
| 重量 Weight(T)                                    | 21                  |

## BHD-360

该钻机能满足大孔径微桩孔及深孔施工。多方位转角系统，自由灵活，使钻机操作手对孔口的观察更方便。带浮动机构的三夹持器设计使得上、卸钻杆更方便。辅助方位测量系统监测钻孔垂直（或水平）角度，使钻机更能精确而且快速的调整孔位，大大节约了辅助调整孔位时间，提高了整体工作效率。

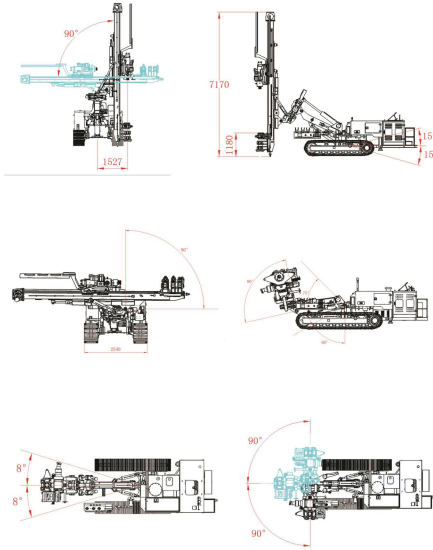
The drill rig meets the needs for large diameter micro-pile borehole and deep borehole drilling. Its articulating structure of flexible multi-articulation is more convenient for operator to observe the borehole mouth. Loading and unloading drill rods is much easier with three clamps. The auxiliary azimuth monitoring system makes the drill rig set up borehole position more accurate and quick, greatly saving set-up time and improving overall working efficiency overall work efficiency.



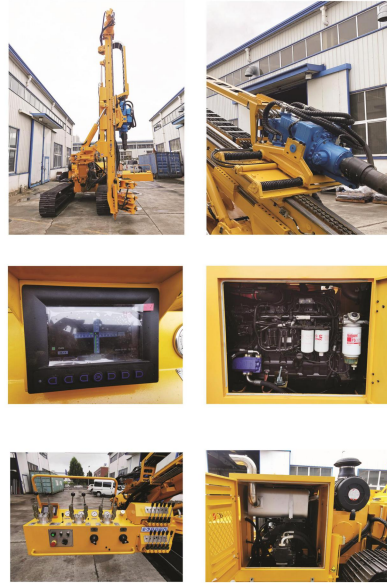
地址:河北省廊坊市安次区工业园安秀道12号  
 电话(Tel):0316-2579706 传真(Fax):0316-2577376  
 邮编(Postcode):065000 网址(Website):www.qtmgzj.com  
 手机(Mobile):18518788866 13780463482



廊坊市秋田岩土工程机械有限公司  
 LANGFANG QIUTIAN GEO-ENGINEERING MACHINERY CO.,LTD



廊坊市秋田岩土工程机械有限公司  
 LANGFANG QIUTIAN GEO-ENGINEERING MACHINERY CO.,LTD



廊坊市秋田岩土工程机械有限公司  
 LANGFANG QIUTIAN GEO-ENGINEERING MACHINERY CO.,LTD

# TMZ-1250 型锚固钻机



## TMZ-1250

精于钻“岩”  
千锤百“转”

TMZ-1250全液压锚固钻机是专为在隧道内锚固施工而设计的一种结构紧凑，动作灵活，可在隧道内进行全角度施工的全液压钻机。它能满足狭小空间内进行锚固施工的要求。

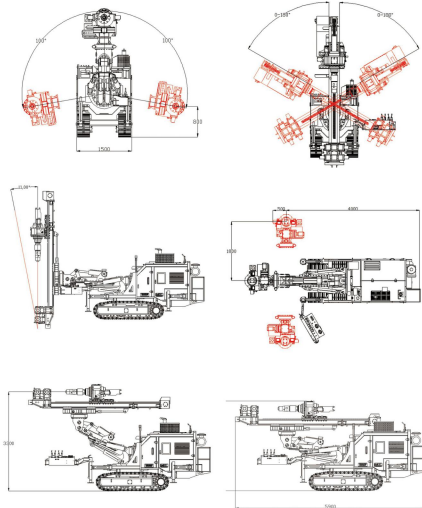
TMZ-1250 hydraulic anchor drilling rig is designed specially been used for anchor borehole drilling in small tunnels or some none-spacious places. With compact structure and articulation system combined with rotating tables it can be used for multi-position with multi-angle anchor borehole drilling.



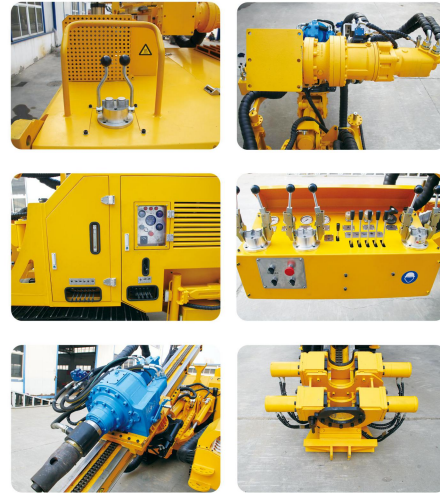
廊坊市秋田岩土工程机械有限公司  
LANGFANG QIUTIAN GEO-ENGINEERING MACHINERY CO., LTD.

| 基本参数                                      |                           |
|-------------------------------------------|---------------------------|
| 发动机型号 Engine Model No.                    | QS84.5-C160               |
| 排放等级 Emission level                       | III                       |
| 额定功率 Rated power(KW)                      | 123KW @2200rpm            |
| 驱动装置 Motor                                | 双速 Double-speed           |
| 行走速度 Trimming speed(km/h)                 | 1.4                       |
| 接地比压 Ground pressure (N/cm²)              | 5.8                       |
| 最大爬坡角度 Gradeability(°)                    | 20                        |
| 高档回转速度 Rotation rate at high gear (r/min) | 0-46, 0-72<br>0-92, 0-144 |
| 低档回转速度 Rotation rate at low gear (r/min)  | 0-32, 0-50<br>0-64, 0-100 |
| 低档回转扭矩 Torque range at low gear(Nm)       | 12000/8500                |
| 高档回转扭矩 Torque range at high gear(Nm)      | 6000/4250                 |
| 冲击频率 Percussion frequency(min⁻¹)          | 1150                      |
| 冲击功 Impact work(N.m)                      | 750                       |
| 给进行程 Feed stroke(mm)                      | 2500                      |
| 给进力 Feed force(kN)                        | 50                        |
| 回拉力 Retraction force(kN)                  | 50                        |
| 给进速度 Feed rate(m/min)                     | 0-10<br>0-50              |
| 回拉速度 Retraction rate(m/min)               | 0-10<br>0-50              |
| 夹持范围 Clamp range(mm)                      | 60-168                    |
| 最大可通过直径 Maximum passing diameter(mm)      | 210                       |
| 运输状态尺寸 Dimension(mm)                      | 5900x1500x2850            |
| 重量 Weight(T)                              | 10                        |

地址:河北省廊坊市安次区工业园安秀道12号  
电话(Tel):0316-2579706 传真(Fax):0316-2577376  
邮编(Postcode):065000 网址(Website):www.qtmgzj.com  
手机(Mobile):18518788866 13780463482



廊坊市秋田岩土工程机械有限公司  
LANGFANG QIUTIAN GEO-ENGINEERING MACHINERY CO., LTD.



廊坊市秋田岩土工程机械有限公司  
LANGFANG QIUTIAN GEO-ENGINEERING MACHINERY CO., LTD.