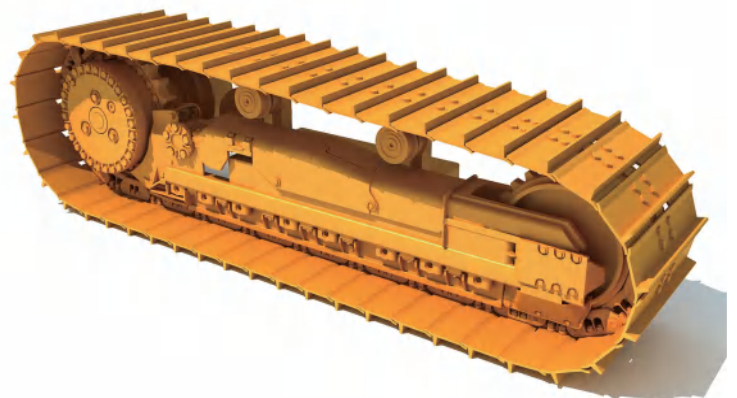




**Stay Durable & Reliable**



**Addressing the track type undercarriage parts demand for parts stores, repairing shops, heavy machine rental companies, wholesaler, etc.**





**Our sincere service,  
durable parts, make  
us your reliable  
partner.**





Quanzhou SDR International Trading Co., Ltd belongs to Quanzhou Huaheng Engineering Machinery Co., Ltd (IGR) which was founded in 2010. As a customer-oriented manufacturer and service provider of bulldozer undercarriage parts, SDR aims to offer highly cost effective parts directly and become an reliable partner, believing that when clients reach goals, we reach ours.

We mainly focus on **bulldozer** undercarriage parts like rollers, idler, sprocket & segments, track chains. Bulldozer undercarriage parts demand high quality due to frequent back-and-forth motion, so we use sufficient quality



raw materials and branded accessories, strictly follow the standard production process of original engineering manufacturer (**OEM**), and keep improving management system. Now we are not only offer parts for OEM directly, but also supply top branded undercarriage parts in Japan and Italy. With the same commitment to quality, other track type undercarriage parts for **excavators, loaders, forestry & farm machines** are being expanded, customizations are also welcomed.

At SDR, we pride ourselves being supported by the founders who have more than 20-years' industrial experience and lead with strong responsibility for the quality products.

In this journey, we are not alone and have integrated many factory resources that have a high sense of responsibility for quality as we do. By knowing what they're really specialized in, we also helped clients to search other parts they need and set up SDR, hoping that customers can reach us directly to obtain durable products and satisfying one-stop service at favorable price, then achieve long-term cooperation.

Welcome to visit our factory, what you see is what you get, let's carry your trust and move your business.

# With Us, You Will Get ...



## -Vast Range of Undercarriage Parts & Available non-standard parts customizations.

Dedicated in **bulldozer** undercarriage parts for 20+ years, thousands of drawings covering a vast range of undercarriage parts for dozers, with the same commitment to quality, other track type undercarriage parts for excavators, loaders, forestry & farm machines are being expanded, customizations are also welcomed.



## - Highly Cost-Effective Undercarriage Parts.

At aftermarket price, get parts produced under **ISO 9001** Quality system and strict standard processing of original engineering manufacturer (**OEM**).



## -On Time Delivery

**3000 m<sup>2</sup>** warehouse for semi-finished and finished products, ensuring timely supply of quality products.



## -One Stop Shop.

Professional and strong supply chain. **Various kinds** of other parts are also available by integrating **local resources** of industry.



**Just Tell Us Your Needs, We Will Try the Best and Take the Rest.**

## Undercarriage Parts for Dozer

**"2000 working hours warranty for dozer rollers, idlers, segments.  
2500 working hours warranty for Lubricated track chain."**

**CAT, Komatsu, Liebherr, Shantui, John Deere, Case, Dresser, FIAT, etc.**

- Rollers
- Idler
- Sprocket & Segments
- Track Chain
- Track Bushing & Pin
- Other Accessories.

## Undercarriage Parts for Excavators & Others.

**"2000 working hours warranty for Excavators Undercarriages."**

**CAT, Komatsu, liebherr, JCB, Volvo, Hitachi, Doosan, etc.**

- Rollers
- Idler
- Sprocket
- Track Chain
- Track shoe



# Rollers

**Bottom Roller Shell Material: 40Mn2, HRC 52-56, depth 8-10mm.**

**Top Roller Shell Material: 50Mn, HRC 52-56, depth 5-7 mm.**

**Shafts: 45# or 40Cr, HRC 56-60, depth  $\geq 4$  mm.**

## Bottom Roller

Komatsu		
Part No.	Application	Description
101-30-00042	D20	
113-30-00170	D31	S.F
11Y-30-00040		D.F
131-30-00320	D41E-3, D41P-3	S.F
131-30-00330		D.F
140-30-00052	D50	S.F
140-30-00062		D.F
12Y-30-00021	D51EX-22,	S.F
12Y-30-00031	D51PX-22	D.F
131-30-00342	D61EX-12	S.F
131-30-00352		D.F
141-30-00576	D65	S.F
141-30-00586		D.F
14X-30-00080	D65EX-12	S.F
14X-30-00090		D.F
155-30-00128	D85A/E/P-18	S.F
155-30-00118		D.F
154-30-01051	D85EX/PX-15	S.F
154-30-01030		D.F
175-30-00760	D155A-1/2	S.F
175-30-00770		D.F
17A-30-00070	"D155A-3,	S.F
17A-30-00080	D155AX-3/5/6"	D.F
17M-30-00320	"D275AX-2/5, D275A-5 "	S.F
17M-30-00330		D.F
17M-30-00321		S.F
17M-30-00331		D.F
195-30-00336	"D355A-3/5/6,	S.F
195-30-00346	D355C-3"	D.F
195-30-00561	D375A-1	S.F
195-30-00571		D.F
195-30-01011	D375A-2/3/6	S.F
195-30-01021		D.F
195-30-01410	D375A-5	S.F
195-30-01420		D.F
195-30-01411	D375A-6	S.F
198-30-00421	D475A-1/2	S.F
198-30-00432		D.F

Caterpillar		
Part No.	Application	Description
3T4352	D3C	S.F
3T4353		D.F
3010652	D3K	S.F
3010650		D.F
1181608	D4C/D/E	S.F
1181609		D.F
1248237	D4H,D5G/M	S.F
1248240		D.F
1181611	D5, D5B	S.F
1181612		D.F
1210824	D5H, D6M	S.F
1210827		D.F
1181617	D6D, 963	S.F
1181618		D.F
1205746	D6R/H	S.F
1205766		D.F
1181623	D7G, D7R	S.F
1181625		D.F
9W5586	D7H	S.F
9W5585		D.F
9W8705	D8L/N/R/T	S.F
9W8706		D.F
10012792		S.F
1327929		D.F
1969947	D8K, D8H	S.F
1969946		D.F
6P4897	D9N/R/T	S.F
6P4898		D.F
1969955	D9L	S.F
1969954		D.F
6Y2950	D9G, D9H	S.F
6Y2951		D.F
8P5605	D10N/R	S.F
8P5604		D.F
3097679	D11N/R	S.F
3097678		D.F
1846305	D11N/R	S.F
1846306		D.F

John Deere	
Application	Description
JD450	S.F
	D.F
JD650	S.F
	D.F
JD655, JD750, JD755	S.F
	D.F
JD850 755A/B 850 850B	S.F
	D.F
JD855	S.F
	D.F
Liebherr	
Application	Description
PR721	S.F
	D.F
PR722	S.F
	D.F
PR732, SR731, LR631B	S.F
	D.F
PR741, PR742, PR734, LR641, SR741	S.F
	D.F
PR751, RL451	S.F
	D.F
PR754	S.F
	D.F
PR763, PR764	S.F
	D.F
RL54	

FIAT	
Application	Description
FL4	S.F
	D.F
FL6	S.F
	D.F
FL7,AD8	S.F
	D.F
FSAD14,FL12	S.F
	D.F
FD255, FL20, FP60	S.F
	D.F
Shantui, Dresser, Case	
Application	Description
T140	S.F
	D.F
T170	S.F
	D.F
TD40	S.F
	D.F
TD15M	S.F
	D.F
Case1650	S.F
	D.F
SD16	S.F
	D.F
SD22	S.F
	D.F
SD23	S.F
	D.F
SD32	S.F
	D.F
<b>D.F.- Double Flange / двубортный</b> <b>S.F.- Single Flange / однобортный</b>	



\*Additional non-listed parts No. are available, please contact us if you have any questions. Part Numbers are used for reference purposes only. Non-standard size products customizations are feasible!

# Top Roller

Komatsu	
Part No.	Application
1343000110	D61EX — 12
141-30-00565	D65
14X-30-00140	D65EX — 12
155-30-00233	D85A
175-30-00513	D155A
175-30-00517	D155A-5
175-30-00517	D155AX-5
195-30-00580	D275A-2
17M-30-00340	D275AX-5
195-30-00103	D355A-1
195-30-01121	D375A-6
Caterpillar	
Part No.	Application
6S3609	D3C
6K9880	D4D
6K9880	D4H, D5M
5A8374	D5B
3T3206	D6D
6Y1781	D6H, D6R
1P8717	D7G
8E0400	D8N
8M0380	D8K
3P3403	D9G
Others	
Application	
PR711, PR711C, PR721, LR611	
PR724	
PR731, PR731L	
PR731B/C, PR732, SR731, LR632, LR631B	
PR741, PR741B/C, PR742, SR741, PR744L	
PR734L, PR734XL, PR734LGP, LR634	
RL54	
PR764	
655, JD750	
JD850,755A/B, 850 850B	
Case 1650	



\*Additional non-listed parts No. are available, please contact us if you have any questions. Part Numbers are used for reference purposes only. Non-standard size products customizations are feasible!



# Idler

**Idler Shell Material: 40Mn or 35 Mn (forging), HRC 52-56, Depth 5-7 mm.**  
**Shaft Material: 45# or 40Cr. HRC 56-50, depth  $\geq$  4 mm.**

Casting and Forging are both available, depending on clients' choice and designs.

OEM style mounting are accepted world wide. Deep-hardened rims provide long life.

Idlers come out completely assembled with seal components, shafts, mounting arms, blocks or brackets.



Komatsu		
Part No.	Application Model	Description
11Y-30-00010	D31PX-22, D37PX-22	
113-30-00101	D31	
124-30-00104	D39EX-22	
125-30-00032	D41E-3	
124-30-00102	D41P-6	
131-30-00275	D50A-17, D60A-3	
12Y3000011	D51PX-22, D51EX-22	
141-30-00538	D60A-8, D65A-6/7/8	
134-30-00200	D61PX-12, D61EX-12 D61PX-15, D61EX-15	
131-30-00272	D61EX-22	
144-30-00037	D65	
141-30-00538	D65E-8	
14X-30-00552	D65EX-16	
14X-30-00110	D65EX-12	
154-30-01010	D85EX-15	
154-30-00072	D85A-18	
154-30-00770	D85A-21	
175-30-00575	D155A-1	
17A-30-00040	D155AX-3	

17A-30-00430	D155AX-6	
17M-30-00310	D275AX-5, D275A-5	
195-30-00283	D355A-3/5	
KM579	D355C-3	
KM3442, 195-30-01030	D375A-2	
195-30-01430	D375A-5/6	
195-30-01431		
<b>Caterpillar</b>		
<b>Part No.</b>	<b>Application Model</b>	<b>Description</b>
6S3277	D3C	
2540635	D3K	
CR2654	D4D	Dozer
		Farm Machinery
160-9754	D4H, D5M/N	
161-7549	D5H, D6M/N	
8S2560	D5, D5B	
1846592	D5G	
2853476	D5K	
5M5009	D6C/D	
149-2493	D6R/H	
202-4304	D6T	
3689791	D6K	
1920220	D7G	
9W7647	D7R	Front S.P
CR4593	D7H	Rear D.P
9W4148		Front D.P
9W9989	D8L	
9W9987	D8N/R/T	Rear D.P
9W9989		Front D.P
9W9987		Rear S.P
9W9989		Front S.P.
CR4096, CR4197	D8K, D8H	D.P
9W9991	D9N	D.P
9W9991	D9R	D.P
9W6039	D9L	S.P
CR1505, CR4098	D9G, D9H	
1253537	D10N	S.P
1560313	D11N	S.P
1514587	CAT527	
	SEM 822	
<b>Others</b>		
<b>Part No.</b>	<b>Application Model</b>	<b>Description</b>
5003948	PR711, PR712, PR721, LR6	
	PR734	
10014339	PR744L, PR746L	
	PR746LGP	
10300209	PR754	
	PR764	
	PR776	
	JD750J	
	JD850J	

\*Additional non-listed parts No. are available, please contact us if you have any questions. Part Numbers are used for reference purposes only. Non-standard size products customizations are feasible!

## ● Production Process ●

The application of manipulator improves the automatic production efficiency and safety.



Adopt unique Integral and pass-type heat treatment with computer controlled process.

Ideal surface hardness with depth hardness of roller shell and shafts enable parts to be highly wear-resistant and crack-resistant.



Adhere to the manufacturing process requirements of top factories in the industry, together with suitable and selective raw material for shell and shaft, other internal components, and branded Mobil oil.

To achieve perfect sealing and lubricant rotation of roller, we take careful assembly processes with the same internal components of OEM, like branded Mobil oil, high quality internal bronze bushings to prevent deformation effectively, floating seals and customized O-rings which are both resistant to high and low temperatures.



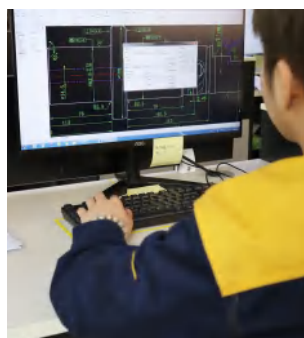
### Special welding structure design.

The entire roller shell is welded by CO2 automatic welding with specially designed joints on both parts to make it more sturdy.



Precise machining by advanced vertical lathe and CNC machines provides the overall precision and stability of product dimensions.

100 % strict air pressure tightness test and rotation test ensure all the products with reliability.

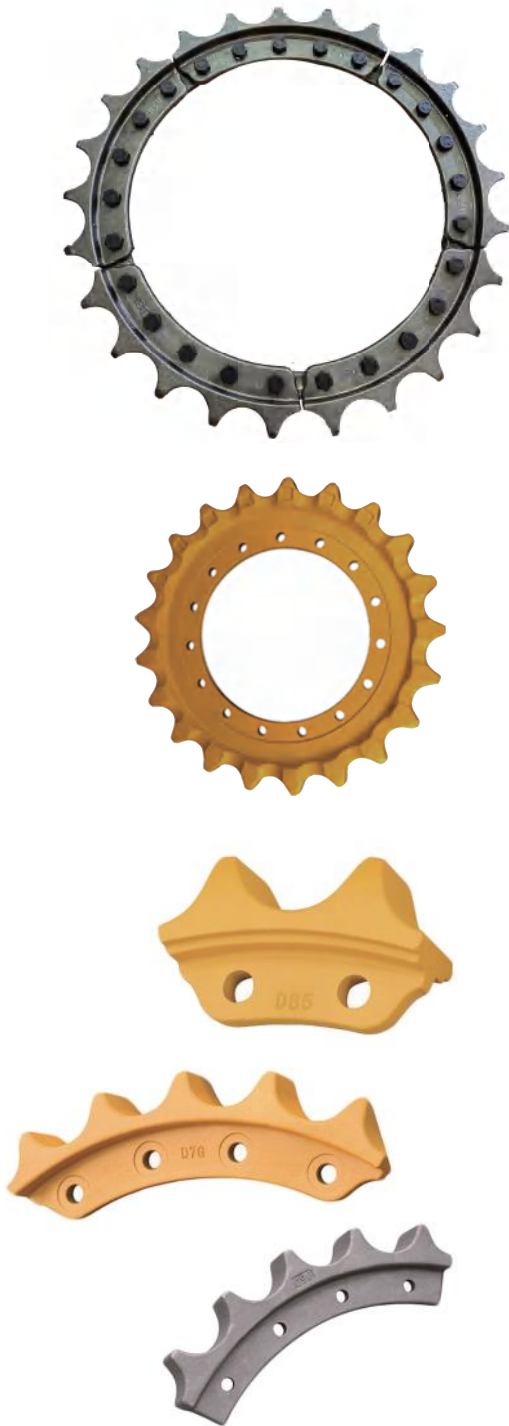


### Efficient quality control and management systems.

As enthusiastic champions of long-termism, we focus on personnel management and individual improvement, establish efficient quality control and management systems with the combinations of advanced inspection instruments to achieve continuous innovation and long-lasting quality assurance for undercarriage parts of dozer and other machines.

# Sprocket & Segments

Material: 40Mn2, HRC 48-55, Depth 5-7 mm.



\*Additional non-listed parts No. are available, please contact us if you have any questions. Non-standard size products customizations are feasible!

Komatsu	
Application	Pieces No.
D31-15	
D31-16	
D31-17	
D31-21	
D41P-6	
D41-3	
D50A-17	9
D51EX-12	9
D61EX-12	9
D65	9
D65EX-12	9
D68EX	5
D85A-18	5
D85EX-15	9
D155A-1	9
D155AX-3	9
D275-5	5
D355	9
D375	5
D475 A-1/2	5
Caterpillar	
Application	Pieces No.
D3C	5
D3K	5+1
D4H,D5M	5
D5H	2+3
D5C	2+3
D5G,D6M	5
D5,D5B	9
D6D	5
D6R	5
D6H	5
D7G	5
D8N,D7R,D7H	5
D8T	5
D8L	3
D8K,D9L	9
D9L	3
D9N	5
D10N	5
D11R	3+1
Others	
Application	Pieces No.
PR731B/C, PR732, SR731,LR632, LR631B	5
PR734	
PR741, PR741B/C, PR742, SR741, LR641	5
JD850-1	5
JD850-2	5
SD52	5
T170	9
T170	9

# Track Chain

Track Link Material: 35MnB, HRC 52-58, depth 8-16 mm

Komatsu																																
Application	Description & Links																															
D31	SALT 43 L	Dry Chain 43L																														
D50	SALT 39 L	Dry Chain 39L																														
D65	SALT 39 L	Dry Chain 39L																														
D65EX-12	SALT 39 L	Dry Chain 39L																														
D85	SALT 38 L	Dry Chain 38L																														
D155	SALT 41 L	Dry Chain 41L																														
D275A	SALT 39 L																															
D355	SALT 39 L																															
D375-6	SALT 41 L																															
D375-5	SALT 40 L																															
D475-2	SALT 41 L																															
Caterpillar																																
Application	Description & Links																															
D3C	SALT 43 L	Dry Chain 43L																														
D4D	SALT 36 L	Dry Chain 36L																														
D6D	SALT 39 L	Dry Chain 39L																														
D6H	SALT 36 L	Dry Chain 39L																														
D7G	SALT 38 L	Dry Chain 38L </tr <tr> <td>D8N</td> <td>SALT 44 L</td> <td>Dry Chain 44L</td> </tr> <tr> <td>D8L</td> <td>SALT 45 L</td> <td></td> </tr> <tr> <td>D9N</td> <td>SALT 43 L</td> <td></td> </tr> <tr> <td>D9L</td> <td>SALT 43 L</td> <td></td> </tr> <tr> <td>D10N</td> <td>SALT 44 L</td> <td></td> </tr> <tr> <th colspan="3">Others</th> </tr> <tr> <th>Application</th> <th colspan="2">Description &amp; Links</th> </tr> <tr> <td>PR734L</td> <td>SALT 36 L</td> <td></td> </tr> <tr> <td>PR764</td> <td>SALT 44L</td> <td></td> </tr> <tr> <td>JD750, JD850</td> <td></td> <td>Dry Chain 51L</td> </tr>	D8N	SALT 44 L	Dry Chain 44L	D8L	SALT 45 L		D9N	SALT 43 L		D9L	SALT 43 L		D10N	SALT 44 L		Others			Application	Description & Links		PR734L	SALT 36 L		PR764	SALT 44L		JD750, JD850		Dry Chain 51L
D8N	SALT 44 L	Dry Chain 44L																														
D8L	SALT 45 L																															
D9N	SALT 43 L																															
D9L	SALT 43 L																															
D10N	SALT 44 L																															
Others																																
Application	Description & Links																															
PR734L	SALT 36 L																															
PR764	SALT 44L																															
JD750, JD850		Dry Chain 51L																														



\*Additional non-listed Items are available, please contact us if you have any questions. Non-standard size products customizations are feasible!



# Track Bushing & Pin

Komatsu	
Application Model	Remarks
D31	for SALT track chain
D50	for SALT track chain
D65	for SALT track chain
D61	for SALT track chain
D80	for SALT track chain
D85SS	for SALT track chain
D80	for SALT/dry track chain
D155	for SALT track chain
D155	for SALT/dry track chain
Caterpillar	
Application Model	Remarks
D3C	for SALT track chain
D3C	for SALT/dry track chain
D4	for SALT track chain
D4E	for SALT track chain
D4D	for SALT track chain
D4D	for SALT/dry track chain
D5H	for SALT track chain
D5B	for SALT track chain
D6D	for SALT track chain
D6H	for SALT track chain
D6H	for SALT/dry track chain
D6M	for SALT track chain
D6R	for SALT track chain
Others	
Application Model	Remarks
FL6	for SALT/dry track chain
FL4	for SALT/dry track chain

SDR offer brush & pin as well as track chain assembly. Bushings and pins are crucial to keep your undercarriage's track chains at an appropriate length and tautness. Whether you need aftermarket pins and bushings for construction equipment, the mining industry, or agricultural equipment, our pins and bushings are manufactured for strength, durability, and longevity.

We are proud we can offer bushing and pins as precise as the manufacturer's original unit to meet higher standard and ensure maximum performance.



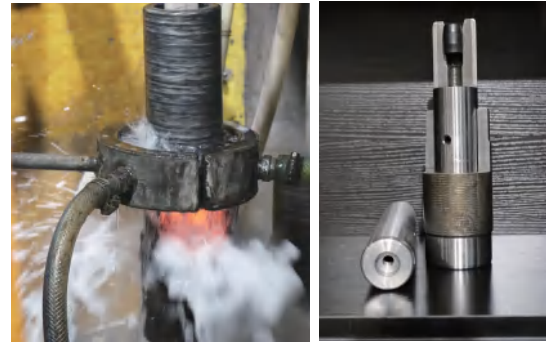
\*Additional non-listed Items are available, please contact us if you have any questions. Non-standard size products customizations are feasible!



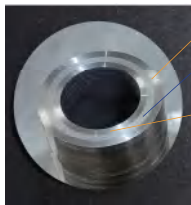
# • Track Bushing & Pin •

## SDR Heat Treatment Enhance Durability.

Adhering to the production process and quality requirements of the top manufacturer, we can select suitable materials or according to customer requirements, combined with different and experienced heat treatments to achieve the best balance between strength and toughness, and maximize quality assurance.

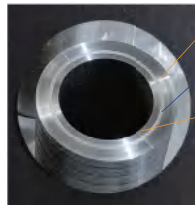


### Cut Surface Photo of Track Bushing



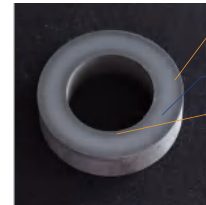
Hard  
Soft  
Hard

Average Quenching



Hard  
Soft  
Hard

Full Quenching

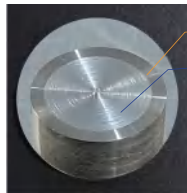


Hard  
Soft  
Hard

Carburizing

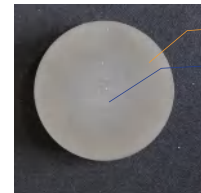
### Cut Surface Photo of Track Pin

Average Quenching



Hard  
Soft

Full Quenching



Hard  
Soft

### Roughness Tester



### Metallographic Analysis



Various materials are available.  
40Cr, 40Mn2, 40Mnb, 35Mnb,  
20Crmnti, etc.





# Other Accessories

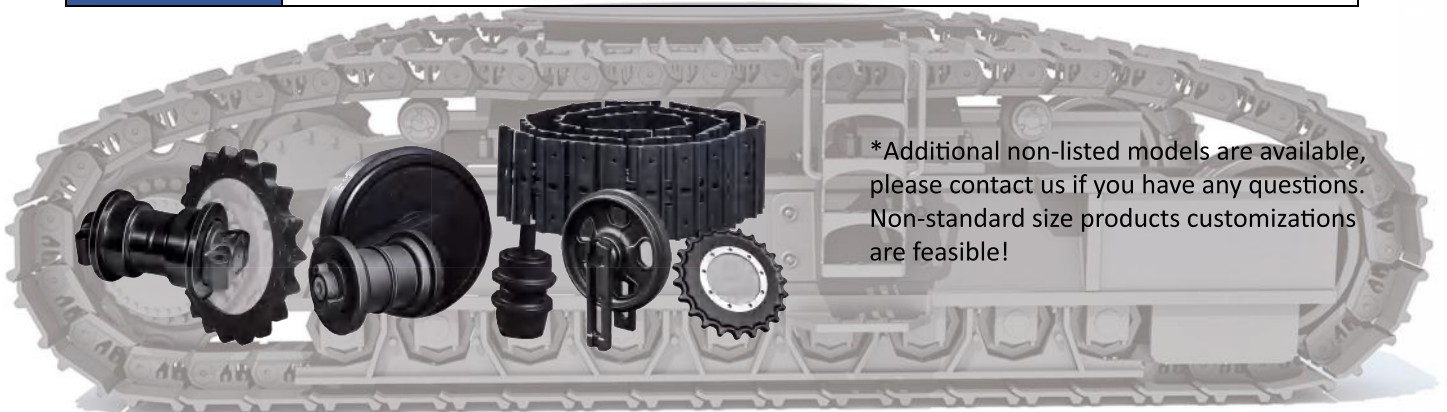
Komatsu	
Description	Application Model
Bracket	D65EX-12, D65
Shaft	D65EX-12, D65
Bushing Assy	D65
Caterpillar	
Description	Application Model
Bracket	D6D,D7G
Shaft	D4D,D6D
Bushing Assy	D6D
Collar	D4D



\*Additional non-listed Items are available, please contact us if you have any questions. Non-standard size products customizations are feasible!

# Undercarriage Parts for Excavator. Models Listing.

Undercarriage Parts for EXCAVATOR	
<b>KOMATSU</b>	PC10,PC15,PC20,PC30,PC40,PC50,PC55, PC60-5, PC71,PC80,PC90,PC100,PC120,PC130,PC150,PC180,PC200-5/6/7/8,PC220,PC240LC-5,PC250,PC270,P280,PC300-5/6/7/8,PC350,PC360,PC400-1/3/5/6/7/8,PC450,PC490,PC600,PC650,PC750,PC1000,PC1250
<b>CATERPILLAR</b>	CAT205,CAT213,CAT215,CAT225,CAT235C,CAT302.5,CAT303.5E,CAT306,CAT311,CAT312,CAT314,CAT315,CAT318,CAT320,CAT322,CAT323,CAT325,CAT326,CAT330(D),CAT345,CAT350,CAT365,CAT374F,CAT375,CAT385B,CAT390F,E18,E70B,E110B,E120B,E200B,E240,E307,E312,E315B,E317B,E320,E324,E330,E336D,E345,E450,CAT953
<b>HITACHI</b>	EX15,EX22,EX30,EX40,EX45,EX50,EX60,EX100,EX120B,EX135,EX150,EX165,EX200-1/2/3/5,EX215,EX235,EX220,EX270,EX300-1/2/5,EX370,EX400,EX450,EX550,EX600,EX700,EX870,EX1000,EX1200,EX1800,ZX30,ZX40,ZX50,ZX55,ZX110,ZX120,ZX130,ZX180,ZX200,ZX200-5G,ZX210,ZX230,ZX240,ZX240-3/5,ZX250LC-5A,ZX260,ZX270,ZX280,ZX300,ZX330-3,ZX330-5G,ZX350-3,ZX360,ZX400LCH-5A,ZX450,ZX470,ZX490LCH-5A.ZX600,ZX650LCH,ZX800,ZX870LC-3,ZX890LCH-5A,UH063,UH083,UH121
<b>HYUNDAI</b>	R55-7,R60,R70,R80-7,R110,R130,R140-7,R160-7,R180-7,R200,R200-3,R210LC-7,R220,R229,R250,R280,R290LC-7,R305-7,R320LC-7,R335,R350,R360LC-3,R360LC-7,R365,R420,R450LC-7,R500LC-7,R520
<b>LIEBHERR</b>	R900,R901,R901B,R901C,R902B,R921B,R921C,R912,R911B,R911HD,R921LC,HS841,HS842,R906LC,R900C,R924,R925B,R926LC,R942,R945,R942LC,HS850,HS840,HS871,R941HD,R942HD,R944,R945,R952,R954,R961(B),R962,R965B,HS870,R962HD,R964,R974,R982LC,R971,HS852HD,HS853HD,HS872,R981HD,R982HD,R984B,R991,R992,R994,R9100
<b>JCB</b>	JS70,JS110,JS130,JS140,JS160LC,JS200,JS205,JS210,JS220, JS240,JS260,JS290,JS305,JS330,JS360,JS460,805B,807,808,818,820HD
<b>DOOSAN</b>	DX55,DH60,DX140,DX180,DX200,DX220LC,DX225,DX255,DX260,DX300,DX340LC,DH55,DH180,DH200,DH220,DH280,DH450,Solar 55,Solar 130LC-V,Solar 225LC-V,Solar 255LC-V,Solar 290LC-V,Solar 300
<b>VOLVO</b>	EC35,EC55,EC80,EC140,EC180BLC,EC210,EC229,EC240,EC290,EC300,EC330B,EC360,EC460,EC700
<b>YANMAR</b>	VIO17,VIO20,VIO25,VIO30,VIO40,VIO50,VIO55,VIO80,B50
<b>CASE</b>	CX55,CX75SR,CX80,CX130,CX160,CX210,CX240,CX290,CX300C,CX350,CX360,CX460,CASE 980,9020,1080,1280,
<b>NEW HOLLAND</b>	E135,E165,E215,E235,E305LC,E335,E385
<b>JOHN DEERE</b>	110/120,230LC,270CLC,330CLC,370/450DLC,490,550LC,590D/590E,650DLC,690B/C/693B,850DLC,85D,892DLC, JD95
<b>KOBELCO</b>	SK60,SK100,SK120,SK135,SK140,SK150,SK200,SK220,SK250,SK270,SK290,SK330,SK350,SK450,K907A
<b>SUMITOMO</b>	SH60,SH75,SH100,SH120,SH200,SH220,SH280,SH300,SH330-3,SH340,SH350,SH430,SH450-3,LS265,LS-2800FJ/FJ2,LS-4300.LS-5800
<b>KATO</b>	HD250.HD450,HD500,HD550,HD700,HD770,HD820,HD1250,HD1430,HD2035
<b>LiuGong</b>	220, 907, 925, 950E
<b>KRANEKS</b>	EK270,EK400



\*Additional non-listed models are available, please contact us if you have any questions. Non-standard size products customizations are feasible!



**Sincere Service, Durable Parts, Reliable Partner.**

Quanzhou Huaheng Engineering Machinery Co.,Ltd. (IGR)

Quanzhou SDR International Trading Co., Ltd.

Email: [felicia@sdrundercarriage.com](mailto:felicia@sdrundercarriage.com)

Tel:86-13505924798 86-15375816729

Wechat/Skype: 86-13505924798

Web:[www.sdrundercarriage.com](http://www.sdrundercarriage.com)

Office Add: Room 1030, Lishang Building No. 2209, Jiangbin South Road, Licheng District, Quanzhou City, Fujian.

Factory Add: No.9 Binnan 7th Road, Binjiang Industrial Zone, Xiamei Town, Nan'an City Fujian.



▲ WeChat



▲ WhatsApp