

诚招国内外区域独家代理商

Sincerely recruit the domestic and oversea regional exclusive agents



推土机配件
Bulldozer Parts



挖掘机配件
Excavator Parts



滑移装载机配件
Compact Track Loader Parts



微型挖掘机配件
Mini Excavator parts

厦门金信博机械有限公司
XIAMEN WORTHPART MACHINERY CO.,LTD

地址: 厦门市湖里区宜宾路29号C栋413
ADD: C413, No.29 Yibin Road, Huli District, Xiamen, China
Tel: +86-592-2963141 Mob: +86 18060598822
E-mail: william@worthpart.com
Web: www.worthpart.com www.worthpart.en.alibaba.com

泉州市金信博机械制造有限公司
QUANZHOU WORTHPART MACHINERY CO.,LTD

地址: 福建省南安市晋美镇金河大道29号 邮编: 362303
ADD: No.29, JinHe Road, Xiamei Town, Nanan, Fujian, China.
电话: 13905968079 Mob: 18060598822
E-mail: william@worthpart.com
网站: www.worthpart.com www.worthpart.en.alibaba.com



Scan QR Code for our Website



WORTHPART

MACHINERY CO.,LTD

金信博机械

一站式服务型高端工程底盘配件引领者

Worthpart, The World Earthmoving Parts;
One-Stop Service Professional Supplier.



• www.worthpart.com



• www.worthpart.en.alibaba.com



Wechat



Whatapp

诚招国内外区域独家代理商

Sincerely recruit the domestic and oversea regional exclusive agents



推土机配件
Bulldozer Parts



挖掘机配件
Excavator Parts



滑移装载机配件
Compact Track Loader Parts



微型挖掘机配件
Mini Excavator parts

厦门金信博机械有限公司

XIAMEN WORTHPART MACHINERY CO.,LTD

地址: 厦门市湖里区宜宾路29号C栋413
ADD: C413, No. 29 Yibin Road, Huli District, Xiamen, China
Tel: +86-592-2963141 Mob: +86 18060598822
E-mail: william@worthpart.com
Web: www.worthpart.com www.worthpart.en.alibaba.com

泉州市金信博机械制造有限公司

QUANZHOU WORTHPART MACHINERY CO.,LTD

地址: 福建省南安市青美镇金河大道29号 邮编: 362303
ADD: No. 29 JinHe Road, Xiamei Town, Nanan, Fujian, China.
电话: 13905968079 Mob: 18060598822
E-mail: william@worthpart.com
网站: www.worthpart.com www.worthpart.en.alibaba.com



Scan QR Code for our Website



WORTH-PART
Xiamen Worthpart Machinery Co.,LTD

金信博机械

一站式服务型高端工程底盘配件引领者
Worthpart, The World Earthmoving Parts, One-Stop Service Professional Supplier.



WORTHPART



泉州市金信博机械制造有限公司



Wechat



Whatsapp

COMPANY

PROFILE · 公司简介
WORTHPART MACHINERY

泉州市金信博机械制造有限公司

创立于2009年，工厂坐落于福建省南安市滨江工业区。公司拥有15年以上的重型工程机械配件内销以及外销的经验；为了扩展国外出口业务以及拓展海外市场，公司于2013年创办了厦门金信博机械有限公司。公司秉承技术主导、专业制造、信誉第一、服务上乘的经营理念，高薪聘请优秀管理人才，专业的技术人员，引进先进的生产设备，坚持自主创新，精益求精为宗旨，努力发展成为中国工程机械配件研发及生产制造的专业企业。

本公司专业生产履带式挖掘机，推土机，滑移装载机底盘配件，我们的产品包括：支重轮、拖链轮、驱动轮、引导轮、履带总成、涨紧弹簧总成、油缸、工字架、护链架、连杆、斗轴、斗轴套、马拉头、螺丝螺母等易损件以及一站式的同心化产品。

公司凭借专业的生产技术,完善的质保体系,具有专业化、系列化、多样化的特点,用于满足客户对各种品牌型号工程机械配件（涵盖小松、卡特、日立、神钢、住友、加藤、现代、大宇、三菱、三星）的需求，主要出口国家为东南亚、中东、欧美、北美,建立了完善的销售服务网络，为广大国内外客户提供了快速、便捷、周到的服务。

我们坚信质量第一，诚信为本的经营理念，诚邀世界各地的客户前来咨询参观。泉州金信博希望与您携手共进，在工程机械领域创造一份黄金市场。

QUANZHOU WORTHPART MACHINERY CO. LTD was found in 2009, located in Quanzhou City, China. Operates on a spacious 7,000 square-meters facility and housing a purpose-built workshop(inspected by Bureau Veritas), with 60-80 employees(expanding). In order to expand the overseas market and provide better service to customers, we have found **XIAMEN WORTHPART MACHINERY CO. LTD** in 2013. The business belief of "long-term relationships based on trust and loyalty" leads us to be one of the **Top10** Undercarriage parts manufacturers in QuanZhou, China.

What we can supply ? the following spare parts for excavator, bulldozer and Compact Track Loader : **Undercarriage Part**(track roller, carrier roller, sprocket, idler, track shoe assembly, track adjuster, tension cylinder), **Ground Engaging Tools**(excavator bucket, bucket teeth, cutting edge and end bits), bucket link, link rod, track guard, pin and bushing etc. The quality standards of our products and services have enhanced our position as the **One-Stop Sale**. At the same time, we can offer the products: the engine parts, filters, hydraulic pumps, seal kits and all kind of related accessories.

What are our products applicable to? Komatsu, Caterpillar, Hitachi, Kobelco, Sumitomo, Kato, Hyundai, Doosan, Mitsubishi, Samsung, Volvo, etc.

Would you like to join us? Our mainly markets are Southeast Asia, the Middle East, Europe, the United States, and North America. We have served for **86** Countries, in total **1036** Customers in the past **15** years and established long-term cooperation with the dealers.

We sincerely invite the customers from all over the world to consult and visit us, just like our slogan-- **"Worthpart, The World Earthmoving Parts"**. We can't wait to develop together with you and make win-win results in this market.



OUR COMPANY TENET

- ◆ Quality First
- ◆ Integrity -Based
- ◆ Service-Oriented

WHAT CAN WE DO FOR YOU?

99.5% ON TIME DELIVERY, 100% CUSTOMERS SATISFIED FEEDBACK, 0.01% ITEMS RETURNS RATE.

AFTER-SALE SERVICE(24-HOURS ONLINE SERVICE FOR YOU)

For any products buying from us ,if any quality problem ,we promise to compensate for any caused loss ,we will offer some different workable solutions for you choices .But quality problem seldom happend before ,we always do full inspection for all items before shipment .

OEM DESIGN SERVICE

We welcome any OEM Requirement ,if you have enough quantity each year ,we can open new molds and mark your logo on the products as per you requests.

AGENCY OR DEALERSHIP ACCEPTED

If you can make sure certain sales amount each year and have wide sales network in you markets ,welcome to consult and negotiate with us about the dealership in your markets





WORTH-PART
Xiamen Worthpart Machinery Co.,LTD

金信博机械

Worthpart, The World Earthmoving Parts; One-Stop Service Professional Supplier.



UNDERCARRIAGE PARTS

www.worthpart.com

金信博机械

WORTH-PART
Xiamen Worthpart Machinery Co.,LTD



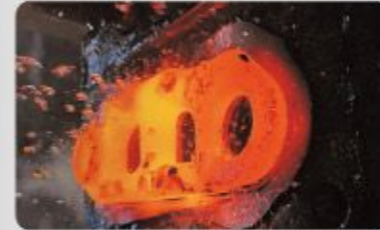
CASTING

WORKSHOP · 铸造车间
WORTHPART MACHINERY



铸造车间是一个重要的生产车间，主要负责铸造各种零部件和产品。随着公司业务的发展和技术的提升，铸造车间的生产规模也越来越大，承担的任务也越来越重。

The foundry workshop is an important production workshop, mainly responsible for casting various components and products. With the development of the company's business and the improvement of technology, the production scale of the casting workshop is also increasing, and the tasks it undertakes are becoming heavier and heavier.



公司拥有1600吨、1000吨等大小精密锻造设备，同时具有专业技术人员及高级工程师进行新产品的开发及研新，为制造高品质产品，提供强有力的保障。

The company has 1000T, 1600T and other heavy duty precision forging machines operated by professional technicians and experienced engineers to guarantee the products are of high quality.

FORGING

锻造车间 · WORKSHOP
WORTHPART MACHINERY

FORGING



WORTHPART MACHINERY 03



02 www.worthpart.com



WORTH-PART
Xiamen Worthpart Machinery Co.,LTD

金信博机械

Worthpart, The World Earthmoving Parts; One-Stop Service Professional Supplier.



UNDERCARRIAGE PARTS

www.worthpart.com

金信博机械

WORTH-PART
Xiamen Worthpart Machinery Co.,LTD



WORTHPART
MACHINERY



在金信博企业,所有产品在出厂前都经过严格、系统、全面的检验,有效地保障了产品售后的正常运行,为客户排除了后顾之忧,也为"WORTHPART"产品树立起优良的品牌形象。

At Worthpart Enterprise, all products undergo strict, systematic, and comprehensive inspections before leaving the factory, effectively ensuring the normal operation of after-sales service, eliminating customers' worries, and establishing a good brand image for "WORTHPART" products.

MACHINING
WORKSHOP · 机加工车间
WORTHPART MACHINERY

MACHINING





WORTH-PART
Xiamen Worthpart Machinery Co.,LTD

金信博机械

Worthpart, The World Earthmoving Parts; One-Stop Service Professional Supplier.



UNDERCARRIAGE PARTS

www.worthpart.com

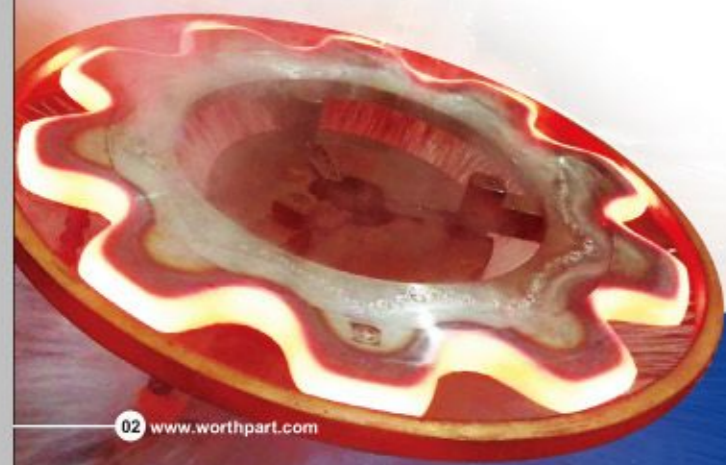
金信博机械

WORTH-PART
Xiamen Worthpart Machinery Co.,LTD



HEAT-TREATMENT

WORKSHOP · 热处理车间
WORTHPART MACHINERY

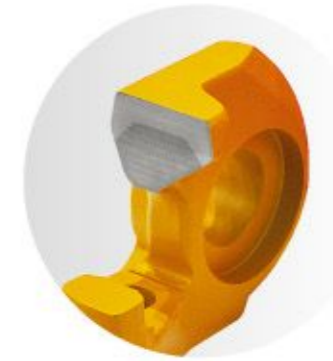


LABORATORY

WORKSHOP · 检验室
WORTHPART MACHINERY

公司的检验室不仅配备了标准的先进仪器设备, 还建立了一支由高素质、经验丰富的专业技术人才组成的团队。这表明公司对产品质量有着极高的要求, 致力于通过科学的检测手段确保产品的安全性和可靠性。

The company's laboratory is not only equipped with advanced instruments and equipment that meet the national first-class laboratory standards, but also has established a team composed of highly qualified and experienced professional and technical personnel. This indicates that the company has extremely high requirements for product quality and is committed to ensuring product safety and reliability through scientific testing methods.





WORTH-PART
Xiamen Worthpart Machinery Co.,LTD

金信博机械

Worthpart, The World Earthmoving Parts; One-Stop Service Professional Supplier.



UNDERCARRIAGE PARTS

www.worthpart.com

金信博机械

WORTH-PART
Xiamen Worthpart Machinery Co.,LTD



PAINTING

WORKSHOP · 涂装车间

WORTHPART MACHINERY

通过精细的喷涂工艺，为产品披上亮丽的外衣，提升其美观度和耐腐蚀性。在涂装车间里，你会见到各式各样的喷涂设备和生产线，它们协同工作，确保每一道工序都能达到最优效果。从底漆的喷涂、中涂的填充到面漆的精细处理，每一个步骤都至关重要。

Through precise spraying techniques, the product is coated with a bright outer layer, enhancing its aesthetic appeal and corrosion resistance. In the painting workshop, you will see various spraying equipment and production lines working together to ensure that each process achieves optimal results. From the spraying of primer, filling of intermediate coat to the fine treatment of topcoat, every step is crucial.



PRODUCTS

WORKSHOP · 成品车间

WORTHPART MACHINERY

我们的产品种类繁多，品质保证。优质的材料、卓越的质量、公道的价格，让你的购物更加放心、舒心。提前备货，为您提供24/7全天候服务，确保您在任何时候都能够得到所需产品。

We have a wide variety of products with guaranteed quality. High quality materials, excellent quality, and fair prices make your shopping more reassuring and comfortable. Pre stocking and providing you with 24/7 service to ensure that you can get the products you need at any time.





WORTH-PART
Xiamen Worthpart Machinery Co.,LTD

金信博机械

Worthpart, The World Earthmoving Parts, One-Stop Service Professional Supplier.



UNDERCARRIAGE PARTS

www.worthpart.com

金信博机械

WORTH-PART
Xiamen Worthpart Machinery Co.,LTD



MINI EXCAVATOR

TRACK ROLLER

CARRIER ROLLER

微型挖掘机 · 支重轮 · 托链轮



MINI EXCAVATOR

IDLER

SPROCKET

微型挖掘机 · 引导轮 · 驱动轮



卓越特性：低损耗、高负重、高强度
Distinct property: Low Wear And Tear, High Loading, High Strength





WORTH-PART
Xiamen Worthpart Machinery Co.,LTD

金信博机械

Worthpart, The World Earthmoving Parts; One-Stop Service Professional Supplier.



UNDERCARRIAGE PARTS

www.worthpart.com

金信博机械

WORTH-PART
Xiamen Worthpart Machinery Co.,LTD



SKID STEER LOADER

TRACK ROLLER

滑移装载机 · 支重轮



SKID STEER LOADER

IDLER

SPROCKET

滑移装载机 · 引导轮 · 驱动轮



卓越特性：低损耗、高负重、高强度
Distinct property: Low Wear And Tear, High Loading, High Strength





WORTH-PART
Xiamen Worthpart Machinery Co.,LTD

金信博机械

Worthpart, The World Earthmoving Parts; One-Stop Service Professional Supplier.



UNDERCARRIAGE PARTS

www.worthpart.com

金信博机械

WORTH-PART
Xiamen Worthpart Machinery Co.,LTD



MINI EXCAVATOR、SKID STEER LOADER

TRACK ASSEMBLY

微型挖掘机 · 滑移装载机 · 履带总成



微型挖掘机、滑移机型号表 MINI EXCAVATOR MODEL TABLE



KOMATSU	CATERPILLAR	HITACHI	VOLVO	HYUNDAI	KOBELCO
PC10	CAT205	EX30	EC18	R17	SK25SR
PC18	CAT215	EX40	EC25	R35	SK35R
PC20	CAT225	EX50	EC50	R55	SK55SR-5
PC30	CAT235	EX60	EC55	R55-7	SK50P
PC40	CAT301	ZX30	EC60	R60	SK60-8
PC50	CAT302.5	ZX40	EC75	R75	SK60-10
PC60	CAT307	ZX50	EC80	R80	SK70SR-2

DOOSAN	KUBOTA	SUNWARD	SANY	XCMG	BOBCAT
DX17	U10	SWE08B	SY16C	EX15U	E17Z
DX20	U15	SWE10UB	SY18U	XE17U	E20Z
DH35	U15-3S	SWE18UF	SY19E	XE26U	E24
DX55	U17-5	SWE20F	SY26U	XE35U	E27Z
DX60	U20-5	SWE25UF	SY35U	XE40	E35
DH60-7	U30-5	SWE35UF	SY55C	XE50	E35i
DX75	KX135	SWE36	SY60C	XE60GA	E35Z



WORTH-PART
Xiamen Worthpart Machinery Co.,LTD

金信博机械

Worthpart, The World Earthmoving Parts; One-Stop Service Professional Supplier.



UNDERCARRIAGE PARTS

www.worthpart.com

金信博机械

WORTH-PART
Xiamen Worthpart Machinery Co.,LTD



BULLDOZER

TRACK ROLLER

CARRIER ROLLER

推土机 · 支重轮 · 托链轮



卓越特性：低损耗、高负重、高强度
Distinct property: Low Wear And Tear, High Loading, High Strength



BULLDOZER

IDLER

SEGMENT 推土机 · 引导轮 · 齿块



WORTH-PART
Xiamen Worthpart Machinery Co.,LTD

金信博机械

Worthpart, The World Earthmoving Parts; One-Stop Service Professional Supplier.



UNDERCARRIAGE PARTS

www.worthpart.com

金信博机械

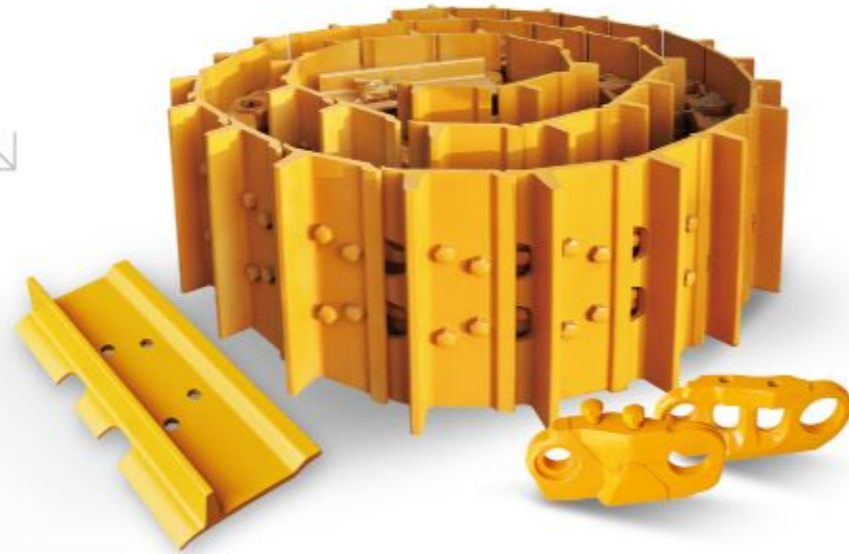
WORTH-PART
Xiamen Worthpart Machinery Co.,LTD



BULLDOZER

OIL CHAIN LINK

推土机 · 油链总成



密封圈、塞子、铁套等组件均来自韩国进口，高质量的密封件保证了油链使用寿命的最大化。
Seal ring, plug, iron bushing and other components are come from South Korea. High quality sealing parts can maximum the shelf life of oil chain.



油链链销必须注油，以满足恶劣环境下既能耐高温又保证了高强度的耐磨性。
Oil chain pin must be filled in lubrication grease so as to protect from bad working environment and not only resist high temperature, but ensure strong wearing resistance.



推土机型号表

SKID STEER LOADER MODEL TABLE

KOMATSU					
D3K	278-2357	D65	14X-27-15112	D355	278-2376
D31		D65EX	14X-27-15111	D375	195-27-33110
D41		D68ESS	134-27-61631	D475	198-27-42281
D50	131-27-61710	D85	154-27-12273A	D575	
D51	12Y-27-11510	D85EX-15	154-27-71630		
D60	141-27-32410	D155	175-27-22325A		
D61		D275	17M-27-41630		

CATERPILLAR					
D3C	CR3005/8Y0622	D6H	6Y2931	D8N/R	6Y2354
D4H	3T2082	D6K	252-9136	D8T	6T6782
D5B	CR4408/5S0836/6Y524	D6N	CR5875/618077	D9N	7T1246
D5C	8E7298	D7G	3S0336/8E4675	D10N	6T9538
D5H	3T9049	D7H	7T9773		
D5K	278-2358	D7R	9P1898		
D6C/D	3P1152/6T4179	D8K	6T6782		



WORTH-PART
Xiamen Worthpart Machinery Co.,LTD

金信博机械

Worthpart, The World Earthmoving Parts; One-Stop Service Professional Supplier.



UNDERCARRIAGE PARTS

www.worthpart.com

金信博机械

WORTH-PART
Xiamen Worthpart Machinery Co.,LTD



EXCAVATOR

TRACK ROLLER

CARRIER ROLLER

挖掘机 · 支重轮 · 托链轮



EXCAVATOR

IDLER

SPROCKET

挖掘机 · 支重轮 · 托链轮



卓越特性：低损耗、高负重、高强度
Distinct property: Low Wear And Tear, High Loading, High Strength





WORTH-PART
Xiamen Worthpart Machinery Co.,LTD

金信博机械

Worthpart, The World Earthmoving Parts; One-Stop Service Professional Supplier.



UNDERCARRIAGE PARTS

www.worthpart.com

金信博机械

WORTH-PART
Xiamen Worthpart Machinery Co.,LTD



EXCAVATOR

TRACK CHAIN ASSY

挖掘机 · 链条总成



挖掘机型号表 EXCAVATOR MODEL TABLE



KOMATSU	CATERPILLAR	HITACHI	VOLVO	HYUNDAI	KOBELCO
PC100	E312	EX100	EC140	R180	SK100
PC200	E320	EX120	EC210	R200	SK120
PC300	E330	EX200	EC240	R250	SK200
PC400	E335	EX220	EC290	R290	SK330
PC600	E345	EX300	EC360	R305	SK500
PC800	E385	EX400	EC460	R450	SK650
PC1250	E395	EX1200	EC700	R520	SK850

DOOSAN	SUMITOMO	JCB	KATO	CASE	LIEBHERR
DX140	SH100	JS110	HD450	CX130	R941
DX225	SH200	JS140	HD550	CX210	R945
DH280	SH240	JS200	HD700	CX240	R952
DH300	SH300	JS260	HD820	CX290	R961
DH360	SH360	JS330	HD1250	CX330	R965B
DH450	SH480	JS460	HD1430	CX460	R982LC
DH500-7LC	SH700	JCB807	HD1880	CX360	R965B



WORTH-PART
Xiamen Worthpart Machinery Co.,LTD

金信博机械

Worthpart, The World Earthmoving Parts; One-Stop Service Professional Supplier.



UNDERCARRIAGE PARTS

www.worthpart.com

金信博机械

WORTH-PART
Xiamen Worthpart Machinery Co.,LTD



EXCAVATOR、BULLDOZER

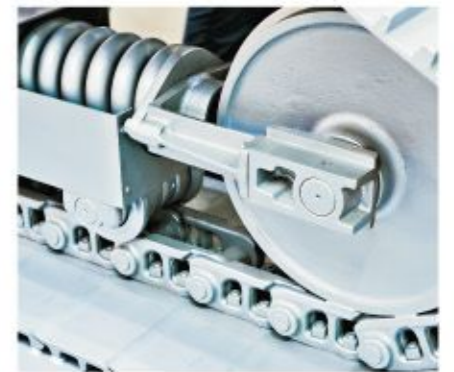
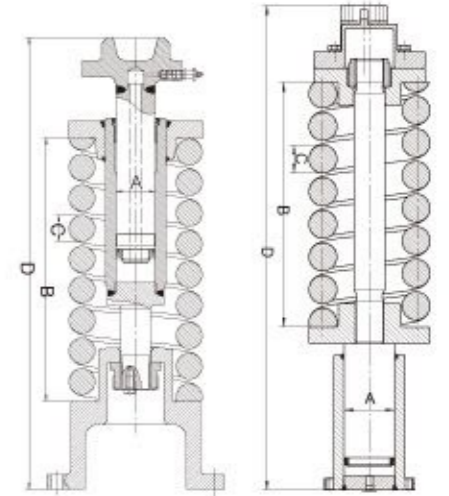
TRACK CYLINDER

挖掘机 · 推土机 · 涨紧油缸



涨紧油缸总成参数 TRACK CYLINDER ASSEMBLY

Item	Product Model	Wire Diameter	Inner Diameter	Height	Coil number	Weight(KG)
1	PC60	30	85	410	6.5	12
2	PC200	45	145	580	8	55.5
3	PC300	50	136	810	10	84
4	PC400	60	150	840	10	138
5	PC100	35	100	480	7	21
6	DH220	45	114	610	8	44.7
7	EX200	42	114	650	8	39.4
8	EX200	45	115	650	8	45.3
9	ZAX200	45	120	660	10	59
10	EX300	50	135	710	9	76.6
11	ZAX330	50	140	710	10	85
12	EX55	22	62	300	7	6
13	EX100	35	95	480	7.5	21.5
14	E120	35	94	520	8	23
15	E312	35	86	590	10	27.3
16	E320	45	125	505	8	48.5
17	E300D	45	130	590	9	56
18	E325	50	120	630	9.5	72.7
19	E330	55	150	590	8	83.5
20	SH120	35	94	480	7	20
21	SH200	42	126	550	8	42





WORTH-PART
Xiamen Worthpart Machinery Co.,LTD

金信博机械

Worthpart, The World Earthmoving Parts; One-Stop Service Professional Supplier.



UNDERCARRIAGE PARTS

www.worthpart.com

金信博机械

WORTH-PART
Xiamen Worthpart Machinery Co.,LTD



BUCKET LINK
千秋架

LINK ROD
连杆

BUCKET EAR

斗耳、马拉头



LINK GUARD

护链架





WORTH-PART
Xiamen Worthpart Machinery Co.,LTD

金信博机械

Worthpart, The World Earthmoving Parts; One-Stop Service Professional Supplier.



UNDERCARRIAGE PARTS

www.worthpart.com

金信博机械

WORTH-PART
Xiamen Worthpart Machinery Co.,LTD



BUCKET BUSH

斗轴套



BUCKET PIN

斗轴



液压泵 Hydraulic Pump



行走马达 Traveling Motor



粉碎钳 Crushing pliers



抓木器 log grapple



挖臂 Boom And Arm



挖斗 Bucket



斗齿 Bucket Teeth



挖臂油缸 Hydraulic Cylinder



刀角刀板 Cutting Edge/ End Bits



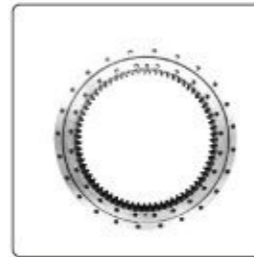
破碎锤 Breaker



快速连接器 Quick Coupler



挂钩 Hook



回转支承 Slewing Bearing



大臂叉 Big Arm Fork



斗齿销 Tooth pin