



雄县津海工矿机械配件有限公司

JINHAI MACHINERY PARTS OF ENGINEERING & MINING CO., LTD.



中国·河北
CHINA·HEBEI



公司简介

雄县津海工矿机械配件有限公司（以下简称津海公司）成立于1983年，拥有30年的浮动油封生产经验，是国内最大一家专业生产浮动油封的企业。公司坐落于河北省保定市雄县，距离北京机场120公里，毗邻大广高速，交通十分便利。

津海公司自成立以来始终秉承着“客户为本，创新发展，提高‘中国制造’在世界的地位”的宗旨，打造了国内浮动油封行业的知名品牌——“津华”牌。

津海公司占地15000平方米，拥有员工200余人，数控车床磨床80余台，已经形成从设计研发、造型浇注，到车削加工、研磨抛光的一整套先进的浮动油封生产工艺。

我公司生产的浮动油封规格从最小外径50mm至最大外径1425mm，规格超过300种，适用于工程机械，煤矿机械，农业机械，建筑机械，盾构机械，以及船舶和减速机行业等。津海公司是中国机械行业浮动油封标准JB/T82.93-1999的起草单位之一。公司生产能力、制造水平和产品质量处于国内先进和贴近国际领先水平。目前为国内多家知名主机厂配套生产，如：山推股份、中联重科、天津移山、天津柳工、山推欧亚陀、陕西黄工奥尔德、湖北三胜、三一重装、布雷维尼（盐城）行星减速机公司，张家口煤机厂、成都探矿厂。

津海公司自2008年以来开展国际市场业务，目前出口到亚洲、欧洲、美洲、澳洲、非洲等20个国家。与多家国际知名公司保持良好的合作关系。

津海公司于2005年通过了ISO9001质量体系认证，2012年通过了ISO/TS16949质量管理体系认证，未来五年将成为世界级浮动油封生产制造商。

Company Profile

JINHAI Machinery Parts of Engineering & Mining Co., Ltd (hereinafter shorted as JINHAI company) was established in 1983, have 30 years experience for floating seals production, which is the largest professional manufacturer all over the China. We are located in Xiong County, Baoding City, Hebei Province, near to Beijing airport with only 120 kms, close to Daguang Highway, the traffic is very convenient.

Since JINHAI company was established, always adhering to the principle as Customer principal, innovate development, improving the position of "Made In China" in world wide, have created a famous brand- "JINHUA" in China floating seal industry.

JINHAI company have owned factories with more than 15,000 square meters, more than 200 employees, 80 CNC lathes, have created an advanced floating seal production line from design, raw material, modeling, casting, to turning, grinding, and lapping.

Our floating seal production size from 50mm to 1425mm with more than 300 models, suit for construction machineries, mining machineries, agriculture machineries, building machineries, shield machineries, and vessel manufacturing and reduction gears industry.

JINHAI company who is one of the drafting company for China floating seal standard JB/T8293.1-1999 & JB/T8293.2-1999. The production capacity, production level and product quality are advanced in the domestic market and close to the international leading level. We are currently supplied to many famous China OEM customers as: SHANTUI, ZOOMLION, YISHAN, LIUGONG, SHANTUIJOYT, HG R&D, HUBEISANSHENG, SANY Mining, Brevini (Yancheng), Zhangjiakou Coal Cutter Factory, and so on.

JINHAI company started to do the international exporting business since year 2008, at present we successfully export to Asia, Europe, America, Australia, Africa with more than 20 countries, have established long-term relations of cooperation with our foreign customers.

In 2005 we have passed the ISO:9001 quality system certification and in year 2012 we have passed the ISO/TS16949 quality system certification, in the future 5 years we are willing to be a world-class famous floating seal manufacturer.



发展历程

- 
- 1983年,与机械部天津工程机械研究所合作建厂,成立集体制企业河北省津雄工程机械配件厂,实现了浮动油封国内自主生产,完全替代进口产品。
 - 1984年,为湖北咸宁工程机械厂(现湖北三胜工程机械有限公司)配套。
 - 1986年,集体企业改制,更名为河北省津华工程机械配件厂。
 - 1993年,公司参与起草中国机械行业浮动油封产品质量分等标准JB/T51030-93。
 - 1994年,为中国人民解放军6443工厂(现天津建筑机械厂-中国移山)生产的湿地推土机配套实验,寿命优于德国利勃海尔浮动油封。
 - 1994年,为河北省盐山工程机械厂配套。
 - 1996年,注册浮动油封商标为“津华”牌。
 - 1997年,被评为雄县人民政府二级扶助企业。
 - 1998年,参与中国机械行业浮动油封标准JB/T8293.1-1999和浮动油封试验方法JB/T8293.2-1999的起草。
 - 1999年,为国内最大的推土机生产商山东山推股份配套。
 - 2001年,为陕西黄河工程机械厂(现陕西中联重科土方机械有限公司)配套。
 - 2002年,为成都探矿机械厂配套。
 - 2003年,为宁波大港意宁液压有限公司配套。
 - 2003年,更名为雄县津海工矿机械配件有限公司,继续使用“津华”品牌商标。
 - 2004年,被保定市质量技术监督局评为“产品质量信得过单位”。
 - 2004年,为张家口煤矿厂配套。
 - 2005年,公司被评为雄县重点保护企业。
 - 2005年,为河北钢铁集团-重工股份配套。
 - 2005年,公司通过ISO9001质量管理体系认证。
 - 2006年,为陕西黄工奥尔德工程机械有限公司配套。
 - 2007年,公司被保定市工商局评为“重合同守信用”单位。
 - 2008年,为陕西中联重科土方机械有限公司配套。
 - 2008年,公司办理自主进出口权,目前出口到世界20个国家,遍布欧洲、美洲、亚洲、非洲、澳洲等。
 - 2009年,被山推股份液力变矩器厂授予“A类配套企业”称号。
 - 2010年,为意大利布雷维尼(盐城)行星减速机有限公司配套。
 - 2010年,为天津建筑机械厂(中国移山)配套。
 - 2010年,被山推股份履带底盘分公司授予“优秀供应商”称号。
 - 2011年,为沈阳三一重装配套。
 - 2011年,在美国设立独家销售公司,负责北美市场业务。
 - 2012年,公司通过ISO/TS16949质量体系认证。
 - 2012年,被山东山推股份评为“合格供应商”。
 - 2013年,为龙工控股有限公司(龙工)、三一重工、徐州工程机械集团(徐工)配套。

Development History

客户为本 创新发展 提高“中国制造”在世界的地位

Customer principal,innovate development, improving the position of "Made in China" in world wide.

- In 1983, factory was established together with Tianjin Construction Machinery Researching Center, named Hebei Jinxiong Construction Machinery Parts Factory ,achieved floating seal independent produced by China domestic technical instead of importing .
- In 1984, supplied to Hubei Xianning Construction Machinery Factory(Now named Hubei Sansheng Construction Machinery Co. Ltd).
- In 1986,collective enterprise has been restructured,changed to new factory name as Hebei Jinhua Construction Machinery Parts Factory.
- In 1993, our company participated in drafting China floating seal standard document floating seal product quality classification JB/T51030-93.
- In 1994,supplied sample floating seals to Chinese people's liberation army 6443 factory (now is named Tianjin Construction Machinery China YISHAN) on the lifetime testing ,better than Germany LIEBHERR.
- In 1994,supplied to Hebei Yanshan Construction Machinery Co.,Ltd.
- In 1996, registered own JINHUA brand floating seal.
- In 1997,our company was awarded of "Secondary Support Enterprise" by local government.
- In 1998, our company participated in drafting China floating seal standard document JB/T8293.1-1999 & JB/T8293.2-1999.
- In 1999,supplied to Shandong SHANTUI which is the largest bulldozers manufacturer all over the China.
- In 2001,supplied to Shanxi Huanggong Construction Machinery Factory (now is named Shanxi ZOOMLION Earth-moving Machinery Co., Ltd).
- In 2002,supplied to Chengdu Prospecting Machinery Factory.
- In 2003, supplied to Ningbo Dagang INI Hydraulic Co.,Ltd.
- In 2003, we have changed to our new company name as " JINHAI Machinery Parts of Engineering & Mining Co.,Ltd" ,continue use the floating seal" JINHUA" brand.
- In 2004,our company was awarded of "Quality Trustworthy Enterprise" by local quality and technical supervision government.
- In 2004, supplied to Zhangjiakou Coal Cutter Factory.
- In 2005,our company was awarded of Emphasis Protection Enterprise by local government.
- In 2005, supplied to Hebei Iron & Steel Group branch company: Hebei Xuanhua Construction Machinery Co.,Ltd.
- In 2005, our company has passed ISO:9001 quality management system certification.
- In 2006, supplied to Shaanxi Huang Gong ARD Machinery Co., Ltd.
- In 2007,our company was awarded of "Abide By Contracts And Keep Promise Enterprise" by local industrial and commercial department.
- In 2008, supplied to Shanxi ZOOMLION Earth-moving Machinery Co., Ltd.
- In 2008, our company have applied import and export right for doing international business ,exporting to more than 20 countries from Europe,America,Asia,Africa,Australia, and so on.
- In 2009,our company was awarded of "A Grade Supplier "by SHANTUI branch company:Hydraulic Torque Converter Factory.
- In 2010, supplied to Italy Brevini (Yancheng) Planetary Drives Co.,Ltd.
- In 2010,supplied to Tianjin Construction Machinery(China YISHAN) Co.,Ltd.
- In 2010,our company was awarded of " Outstanding Supplier" by SHANTUI undercarriage branch company.
- In 2011, supplied to Shenyang SANY Heavy Equipment Co., Ltd.
- In 2011, established sale company in USA ,in charge for North America market business .
- In 2012, our company was awarded of "Qualified Suppliers" by SHANTUI Construction Machinery Co., Ltd.
- In 2012, our company has passed ISO/TS16949 quality management system certification.
- In 2013, supplied to Lonking holdings co.ltd(LONKING).
- In 2013,supplied to SANY heavy industry.
- In 2013,supplied to Xuzhou Construction Machinery Group Co., Ltd. (XCMG).

锐意创新 开拓进取
Sheer innovation, forge ahead.



荣誉证书

Honorary certificates



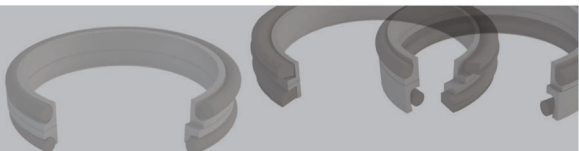
材质

Material

我公司浮动油封环材质为特殊铬钼合金铸铁，此种合金铸铁材料具有耐磨性高、硬度高、耐腐蚀强的特性。浮动油封环硬度在HRC 65-72之间，寿命超过4500小时。

The material of metal floating seal is a special Chrome Molybdenum cast iron which is a special high hardness material with wear and corrosion resistance properties. The hardness of the metal seal is between HRC65 to HRC72, lifetime is at over 4500 hours.

Grade	Material Name	Element composition%								
		C	Si	Mn	Cr	Mo	Ni	W	Co	V
A	9Cr6Mo	3.5-3.9	1.2-1.7	0.5-1.0	8.3-10.5	5.0-8.0	1.7-4.3	3.5-4.5	2.5-3.5	1.7-2.4
B	15Cr3MoNi	3.2-3.6	1.1-1.6	0.5-1.0	14.0-16.0	2.0-4.0	1.0-2.0			
C	15Cr3Mo	3.2-3.6	1.1-1.6	0.5-1.0	14.0-16.0	2.0-4.0				
D	15Cr1Mo	3.2-3.6	1.1-1.6	0.5-1.0	14.0-16.0	0.5-1.0				



材质化验设备 Chemical examination facilities



铸造 Casting



橡胶圈 O-rings

我公司生产的浮动油封配套橡胶O型圈材料有4种：丁腈橡胶（NBR），硅橡胶（VMQ），氟橡胶（FPM），氢化丁腈橡胶（HNBR），以供客户不同工作环境的选择和应用。

We have 4 kinds material of O-rings for customers' different working requirement and application as :NBR,VMQ,FPM,HNBR.

Material Name Technical Specification	Color	Hardness (ShoreA)	Tensile strength (Mpa)	Elongation at break (%)	Temperature (°C)	Density (g/cm ³)
NBR	Black	60±5	10min.	250min.	-40~100	1.15
VMQ	Yellow/White	60±5	6min.	350min.	-50~200	1.25
FPM	Black/Brown	65±5	8min.	200min.	-10~180	1.85
HNBR	Black	60±5	12min.	300min.	-25~150	1.16

产品适用范围 Application Range



中联旋挖钻 Rotary-drill



中联重科-挖掘机 Excavator



宣工-推土机 Bulldozer



中联重科-推土机 Bulldozer



山推-推土机 Bulldozer



拖拉机 Tractor



移山推土机 Bulldozer



小型挖掘机 Mini Bulldozer



采煤机 Coalcutter



刮板输送机 Scraper Conveyor

做一流企业 创世界名牌

To make the first-class enterprise and the world famous brand!



探矿滚刀 Prospecting Hob



掘进机 Roadheader



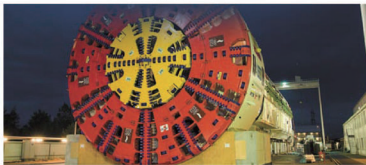
布雷维尼-行星减速机 Reduction Gears



挖泥船 Dredger



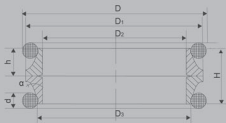
布雷维尼-行星减速机 Reduction Gears



盾构机 Tunnel Boring Machine



普通型浮动油封 Ordinary floating seal



普通型浮动油封 Ordinary floating seal

件号P/N	外径D1	内径D2	厚度H	胶圈Oring	件号P/N	外径D1	内径D2	厚度H	胶圈Oring
JH0220	31	22	20		JH0635	79	63.5	25	66*8
JH0305	42.5	30.5	17.5	32*5.6	JH0670	80	67	20	68.5*6.5
JH0340	45	34	14		JH0585	80	58.5	27	
JH0380	50	38	20.6	41*6	JH0630	80.5	63	26	66*8
JH0390	50	39	14		JH0635B	82.5	63.5	32	66*9.5
JH0380B	51	38	20.4	41*6	JH0690	84	69	24	72*8
JH0400	52	40	20		JH0700	84	70	20	72.5*6.5
JH0480	58	48	14.4		JH0710	84	71	20	72.5*6.5
JH0450	58	45	21	48.5*6	JH0675	86.5	67.5	32	71*9.5
JH0430	58	43	24	48*7	JH0740	86.5	74	22.5	
JH0450B	59	45	26.8		JH0700B	87	70	21	
JH0460	59	46	20	47.5*6.5	JH0775	87.6	77.5	13.6	78*4.3
JH0460B	60	46	24		JH0735	88.5	73.5	20.4	
JH0480B	62	48	25	52*7.6	JH0680	89	68	24	75*8
JH0480C	62	48	26	52*7.6	JH0690B	89	69	24	75*8
JH0510	65	51	23		JH0700C	89	70	24	75*8
JH0510B	65.6	51	26.8	55.5*6	JH0700D	90	70	28	75*9
JH0540	68	54	24	56*7	JH0700E	90	70	29	75*9
JH0555	70	55.5	22	58*7.5	JH0720	91.4	72	36.4	
JH0560	70	56	26	60.8*7.6	JH0730	92	73	32	76*9.5
JH0610	73	61	17.6	64*5.2	JH0725	92	72.5	35.6	
JH0575	74	57.5	25		JH0795	92.5	79.5	20	81*6.5
JH0600	74	60	20.6		JH0746	93.3	74.6	29	78*9.5
JH0575B	75	57.5	25		JH0750	94	75	29	78*9.5
JH0580	75	58	27		JH0770	94	77	29	78*9.5
JH0640	78	64	25	67*8	JH0750B	94.5	75	32	

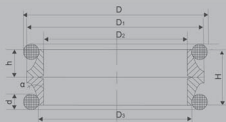


件号P/N	外径D1	内径D2	厚度H	胶圈Oring
JH0750C	97	75	26	82*8
JH0810	98	81	28	82*8
JH0850	99	85	20	
JH0800	100	80	30	85*9.3
JH0830	102	83	28	87*8.5
JH0825	102	82.5	35.6	
JH0900	105	90	26	93*6.3
JH0940	106.5	94	23	
JH0965	106.6	96.5	13.6	98*4.6
JH0880	108	88	24	93*8
JH0888	108	88.75	29.4	
JH0900B	109	90	32	93*9.5
JH0920	109	92	22	98*7
JH0905	109.5	90.5	32	93*9.5
JH0904	109.5	90.4	35.6	
JH0910	110	91	32	93*9.5
JH1000	112.4	100	32	
JH0950	114	95	32	
JH1040	117	104	22	
JH1000B	118	100	31	
JH1020	118	102	27	
JH1000C	119	100	32	103*9.5
JH0985	119	98.5	29	104*8.5
JH0985B	120	98.5	29	104*8.5
JH0990	120	99	28	105*8.5
JH1010	120	101	29	

件号P/N	外径D1	内径D2	厚度H	胶圈Oring
JH1040B	121	104	22	
JH1030	122	103	32	
JH1040C	122.5	104	22.5	
JH1030B	122.5	103	32	
JH1040D	125	104	28	110*8.5
JH1070	125	107	24	110*8.5
JH1100	127	110	32	110*9
JH1100B	128	110	32	113*9.2
JH1110	128	111	22	
JH1130	131.5	113	29.4	115*9.5
JH1090	132	109	31	115*9.5
JH1090B	132	109	32	115*9.5
JH1250	136.5	125	32	
JH1140	137	114	31	
JH1150	137	115	31	
JH1160	138	116	32	123.5*9.5
JH1170	138	117	32	123.5*9.5
JH1200	139	120	32	123.5*9.5
JH1265	139	126.5	26.8	
JH1185	139.5	118.5	28	124*8.5
JH1210	140	121	30	
JH1200B	140	120	32	
JH1170B	140	117	28	122.5*8.4
JH1170C	140	117	29	124*8.7
JH1190	140	119	28	
JH1200C	141	120	32	



普通型浮动油封 Ordinary floating seal

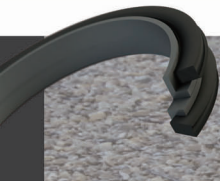

普通型浮动油封 Ordinary floating seal

件号P/N	外径D1	内径D2	厚度H	胶圈Oring	件号P/N	外径D1	内径D2	厚度H	胶圈Oring
JH1240	141	124	22		JH1540D	170	154	21	158*7
JH1270	141	127	25.4	130*6.3	JH1500B	171	150	32	155*9.3
JH1270B	141	127	29	125*8.3	JH1520	171.5	152	32	
JH1200D	142	120	38		JH1530	171.5	153	28	157*8.3
JH1250	144	125	32	128.5*9.5	JH1460C	172	146	38	147.3*12.7
JH1260	146	126	32	130*9.5	JH1500C	172	150	40	151*11.2
JH1270C	146	127	32	130*9.5	JH1540E	173.5	154	32	
JH1300	150	130	32		JH1460D	175	146	38	
JH1300B	151	130	33		JH1570	177	157	38	
JH1300C	152	130	32		JH1540F	178	154	34	
JH1300D	152	130	38.5		JH1595	180	159.5	32	166*9
JH1370	153	137	30		JH1650	181	165	27	170*7
JH1400	155	140	25		JH1640	189	164	30	
JH1355	154.5	135.5	28	139*8.3	JH1690	189	169	32	
JH1430	157	143	25.4	142*6.2	JH1725	190	172.5	25.4	
JH1430B	157	143	27	145*6.3	JH1740	190	174	25.4	
JH1430C	160	143	27	145.7*8.3	JH1630	191	163	38	167*12.7
JH1400B	160	140	33		JH1630B	191	163	46	167*12.7
JH1470	167	147	28	154*8.5	JH1650B	194	165	38	173*10.5
JH1500	167	150	28	154*8.5	JH1600	194	160	38	173*10.5
JH1460	168	146	34	150*10	JH1720	194	172	32	175*9.5
JH1460B	168	146	38		JH1760	195	176	28	182*8.3
JH1540	168	154	27	150*6.5	JH1780	197.4	178	21.4	
JH1540B	168	154	25.4	154*6.3	JH1780B	199	178	32	184*9.5
JH1540C	169	154	22	158*7	JH1770	200	177	30	184*9.5
JH1480	170	148	31	155*9.3	JH1780C	200	178	38	183*12.4



件号 P/N	外径 D1	内D2	厚度 H	胶圈 Dring
JH1860	203	186	32	
JH1860B	203	186	25.4	184*6.25
JH1820	210	182	38	184*12.7
JH1820B	210	182	46	184*12.7
JH1920	215	192	33	194.5*10.3
JH1900	215	190	36	198*10
JH1900B	216	190	36	198*10
JH1880	218	188	38	
JH1880B	220	188	40	
JH2010	222.3	201	26.5	208*6.2
JH2087	222.8	208.7	26	208*6.2
JH2050	227	205	30	210*9.5
JH2000	228.5	200	38	205.5*13
JH2090	234	209	42	215*13
JH2200	239.5	220	32	224*9.5
JH2200B	240	220	26	
JH2180	240	218	37	
JH2100	240	210	41	
JH2200B	241.4	220	25	226*7.7
JH2170	244	217	37	
JH2200C	245	220	36	229*10
JH2230	246	223	36	229*10
JH2235	251.5	223.5	38	225*12.7
JH2235B	251.5	223.5	46	225*12.7
JH2250	252	225	38	225*11
JH2255	253	225.5	40.8	

件号 P/N	外径 D1	内D2	厚度 H	胶圈 Dring
JH2350	258	235	34	242*11
JH2310	259	231	36	
JH2316	259.6	231.6	38	
JH2300	260	230	36	242*11
JH2350B	260	235	36	240*10
JH2380	261	238	32	245*9.5
JH2400	262.8	240	38	243*12
JH2400B	267	240	42	248.5*12
JH2390	268	239	40	248.5*12
JH2405	268	240	38	248.5*12
JH2500B	270	250	30	
JH2500	276	250	44	255*12.7
JH2540	280	254	36	260*12
JH2520	280	252	38	255*12.7
JH2600	288	260	40	266*12
JH2615	288.5	261.5	40	266*12
JH2650	292	265	38	265*12.7
JH2650B	292.8	265	38	265*12.7
JH2650C	292.8	265	46	265*12.7
JH2650D	294	265	38	265*12.7
JH2720	300	272	40	276*12.7
JH2750	303	275	38	276*12.7
JH2829	310.8	282.9	38	278*12.7
JH3000B	325	300	38	305*12.7
JH3010	328	301	38	305*12.7
JH2950	328	295	40	305*12.7

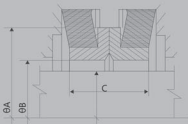

普通型浮动油封 Ordinary floating seal

件号P/N	外径D1	内径D2	厚度H	胶圈Oring	件号P/N	外径D1	内径D2	厚度H	胶圈Oring
JH2980	328	298	40.8	305*12.7	JH4200	450	420	42	
JH3000	328	300	40	305*12.7	JH4285	454	428.5	37	420*12.7
JH3000C	330	300	40		JH4240	454	424	42	420*12.7
JH3040	334	304	38	310*12.5	JH4290	457	429	38	420*12.7
JH3090	337	309	40		JH4300	459.2	430	38	420*12.7
JH3180	340	318	38	315*12.7	JH4500	477	450	44	
JH3180B	341	318	38	315*12.7	JH4500B	480	450	50	154*16
JH3180C	346	318	38	315*12.7	JH4550	483	455	44	450*13
JH3180D	346	318	40	320*12.7	JH4570	492	457	38	
JH3190	346.5	319	46	315*12.7	JH4650	495	465	43.6	460*12.7
JH3200	348	320	40	320*12.7	JH4650B	497.2	465	43.6	460*12.7
JH3400	368	340	40	345*12	JH4700	500	470	50	474*16
JH3400B	368	340	40.8	345*12	JH4720	500	472	50	474*16
JH3400C	370	340	40	345*12	JH5000	527	500	43.6	502*12.7
JH3500	375	350	38	355*12.7	JH5055	533.4	505.5	44	493*12.7
JH3550	375	355	38	355*12.7	JH5070	547	507	60	510*18
JH3660	394	366	38	360*12.7	JH5300	560	530	50	530*16
JH3660B	394	366	40	360*12.7	JH5380	566.8	538	43.6	535*12.7
JH3660C	394	366	46		JH5280	570	528	42	
JH3660D	394	366	48		JH5550	590	555	42	550*13.5
JH3700	398	370	38	370*12.7	JH5590	590	559	50	560*16
JH3700B	400	370	40		JH5760	608	576	43.6	582*12.7
JH3805	405	380.5	40	378*12	JH5815	608	581.5	43.6	582*12.7
JH3880	415	388	38	385*12.7	JH5910	623	591	50	595*16
JH3880B	416	388	38	385*12.7	JH5960	628	596	50	595*16
JH3880C	417	388	38	385*12.7	JH6600	695	660	53	660*16



"L" 型浮动油封

"L"-floating seal



件号P/N	外径D1	内径D2	厚度H	胶圈Oring
JH6670	700	667	43.6	660*12.7
JH6670B	700	667	45	660*12.7
JH6670C	700	667	50	660*12.7
JH7100	750	710	50	722*16
JH7180	750	718	50	722*16
JH7300	768	730	50	
JH7700	826	770	80	780*20.5
JH7800	836	780	80	790*20.5
JH8320	865	832	43.6	830*12.7
JH8170	865	817	46.6	830*12.7

件号P/N	外径D1	内径D2	厚度H	胶圈Oring
JH8320A	865	832	46.6	830*12.7
JH8250	865.3	825	48	819*12.7
JH8300	886	830	80	840*20.5
JH9020	941	902	60	897*16.25
JH9200	976	920	80	930*20.5
JH10300	1085	1030	80	1020*20.5
JH10440	1105	1044	80	1050*20.5
JH11750	1236	1175	80	1170*20.5
JH13720	1425	1372	80	1350*20.5

"L" 型浮动油封

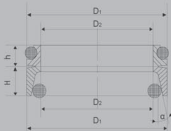
"L"-floating seal

件号P/N	外径A	内径B	厚度C
JH0460L	59	46	19
JH0535L	67	53.5	16.8
JH0540L	70	54	20.4
JH0600L	76	60	20
JH0585L	80	58.5	19
JH0760L	90	76	17
JH0730L	90	73	21.6
JH0740L	93	74	20
JH0880L	104	88	17
JH0875L	109	87.5	18

件号P/N	外径A	内径B	厚度C
JH0870L	111	87	19
JH0900L	115	90	32
JH1025L	118.8	102.5	20.4
JH0930L	120	93	24
JH0990L	123	99	19
JH1120L	136	112	26
JH1430L	165	143	28
JH1550L	180	155	34
JH1745L	197	174.5	22
JH1940L	222	194	32



"XY" 型浮动油封 "XY"-floating seal


"L" 型浮动油封 "L"-floating seal

件号P/N	外径A	内径B	厚度C	件号P/N	外径A	内径B	厚度C
JH2145L	242.5	214.5	39	JH2850L	317	285	38
JH2260L	246	226	40	JH3210L	352	321	38
JH2260AL	256	226	40	JH3550L	392	355	39.2
JH2278L	260.6	227.8	41	JH4420L	470	442	40
JH2480L	270	248	41	JH5000L	534	500	42
JH2410L	273	241	36	JH5350L	580	535	45
JH2470L	277	247	42	JH5630L	596	563	28
JH2830L	305	283	42				

"XY" 型浮动油封 "XY"-floating seal

件号P/N	外径D1	内径D2	厚度h/H	胶圈O ring
JH0545Y	71.4	54.5	22/32.5	47*9.5
JH0545X	71.4	54.5	10.5/32.5	61.4*5.8
JH0665Y	83.2	66.4	22/32.5	60*9.5
JH0665X	83.2	66.4	10.5/32.5	73.4*5.8
JH0760Y	93.3	76	22/32.5	69.4*9.5
JH0760X	93.3	76	10.5/32.5	83.0*5.8
JH0820Y	98.5	82	22/32.5	75.0*9.5
JH0820X	98.5	82	10.5/32.5	89.8*5.8
JH1080Y	125	108	22/32.5	100.7*9.5
JH1080X	125	108	10.5/32.5	114.0*6.0



销售网点 SALES NETWORK





雄县津海工矿机械配件有限公司
JINHAI MACHINERY PARTS OF ENGINEERING & MINING CO., LTD.

地址：中国·河北省保定市雄县十里铺工业区8号

Add : No 8 Shilipu Industrial Estate, Xiong County, Baoding City,
Hebei Province, China.

电话：(Tel) : +86- (0) 312-579-1298

传真：(Fax) : +86- (0) 312-579-2988

手机：(Mob) : +86-159-3322-1393

网址：(Web) : www.hbjinhai.com

邮箱：(Email) : richard.wong@hbjin Hai.com

邮编：(P. C.) : 071800