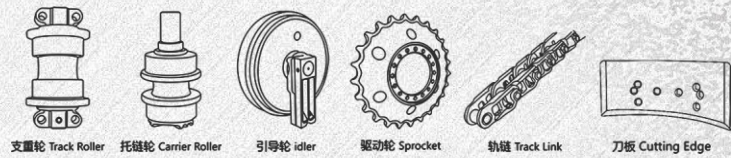
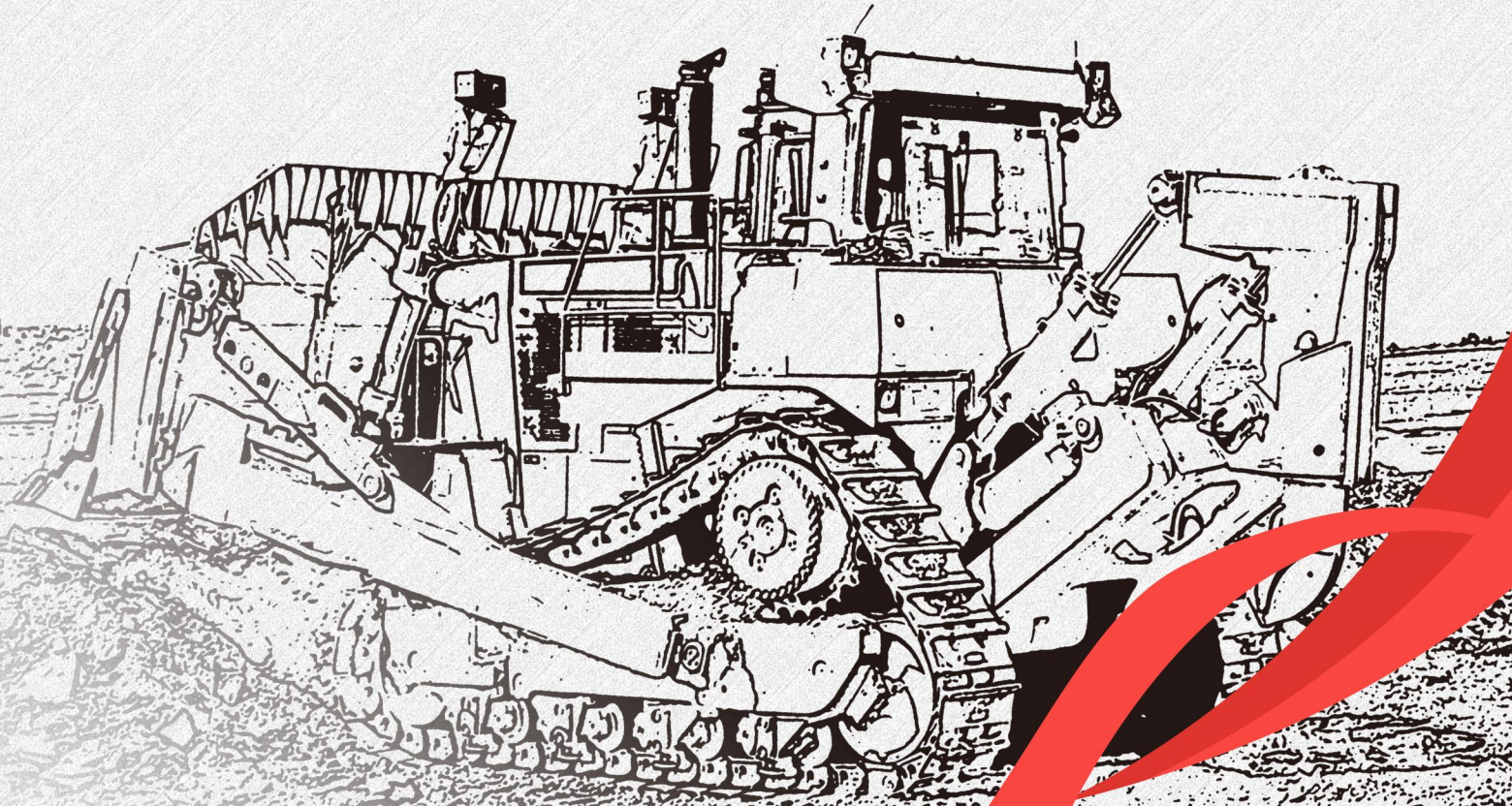


Professional manufacturer of tracked walking components



# COMPANY PROFILE



Quanzhou City Quanhong Construction Machinery Co.,Ltd



# CONTENTS

<b>01-02</b>	Company Overview	<b>08</b>	Main products
<b>03</b>	Qualifications	<b>09-10</b>	Manufacturing process
<b>04</b>	Quality /Environmental Safety Management System	<b>11</b>	Quality Management
<b>05</b>	Factory Overview	<b>12</b>	Quality laboratory
<b>06</b>	Organizational structure	<b>13</b>	Supporting manufacturers
<b>07</b>	Production equipment	<b>14</b>	Geographic location

PROFESSIONAL MANUFACTURER OF TRACKED WALKING COMPONENTS





# COMPANY OVERVIEW



PROFESSIONAL MANUFACTURER OF TRACKED WALKING COMPONENTS



Quanzhou City Quanhang Construction Machinery Co., Ltd. is located in Quanzhou, Fujian, a famous historical and cultural city and hometown of overseas Chinese. Our company specializes in the development, manufacturing (casting, forging, heat treatment), and sales of various models of excavator and bulldozer support wheels, drag chain wheels, drive wheels, guide wheels, rail chain assemblies, Qianqiu frames, chain guard frames, tension cylinders, track shoes, axles, sleeves, and other engineering machinery chassis components.

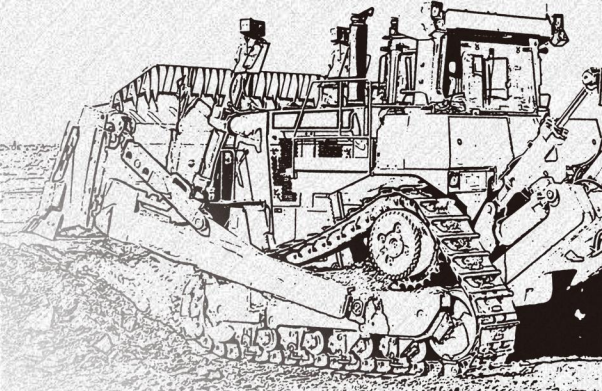
Our company was established in 1998, covering an area of 50 acres and employing over 300 employees. We have advanced production equipment and testing methods in China. Adopting leading craftsmanship and art, with first-class quality, rich variety, reasonable price, and good reputation, we are highly praised by our customers. Our products are sold both domestically and internationally, with the main domestic markets being Guangzhou, Shanghai, Hangzhou, Changzhou, Shiyang, Tianjin, Shenyang, Harbin, Changsha, and other cities. It has established long-term good cooperation relations with dealers in Russia, Türkiye, Iran, India, Malaysia, Thailand, Vietnam, Indonesia, Egypt, Bolivia and other countries. At present, its products are exported to more than 70 countries and regions.

  
**1998**年  
企业成立

  
**33333+** m<sup>2</sup>  
占地面积

  
**300+** 位  
企业员工

# QUANHANG





## Company overview

**Corporate name:**

Quanzhou City Quanhang Construction Machinery Co., Ltd

**Equity ownership:** Sole proprietorship

**Registered capital:** RMB 500 million

**FACTORY SCALE:** 3.333+Million square meters

**Employed employees:** 300 People

**Enterprise production capacity:** Billion+

## Main products

Various models of excavators and bulldozers

Supporting rollers, carrier rollers

Drive wheel, idler wheel

Rail chain assembly, frame

Various hydraulic cylinders, shafts, sleeves

High strength bolts

Mechanical components such as gears.

PROFESSIONAL MANUFACTURER OF TRACKED WALKING COMPONENTS





PROFESSIONAL MANUFACTURER OF TRACKED WALKING COMPONENTS



**营业执照**

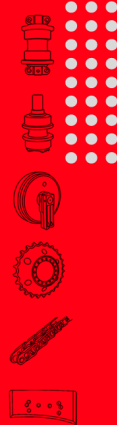
统一社会信用代码 91350583052305906M

名称	泉州市泉航工程机械有限公司
类型	有限责任公司
住所	福建省泉州市南安市霞美镇滨江工业区金河路10号
法定代表人	吴智勇
注册资本	伍佰万圆整
成立日期	2012年08月09日
营业期限	2012年08月09日 至 2032年08月08日
经营范围	生产、销售：工程机械设备、工程机械零部件、汽车零部件。 (依法须经批准的项目，经相关部门批准后方可开展经营活动)

登记机关 南安市市场监督管理局  
2016年12月26日

请于每年1月1日至6月30日登录福建工商红盾网申报年度报告并公示

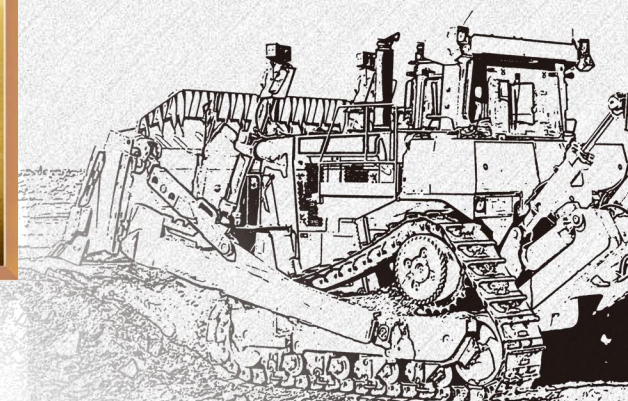
企业信用信息公示系统网址：<http://wsgs.fjcttc.gov.cn/credit.jsp> 中华人民共和国国家工商行政管理总局监制





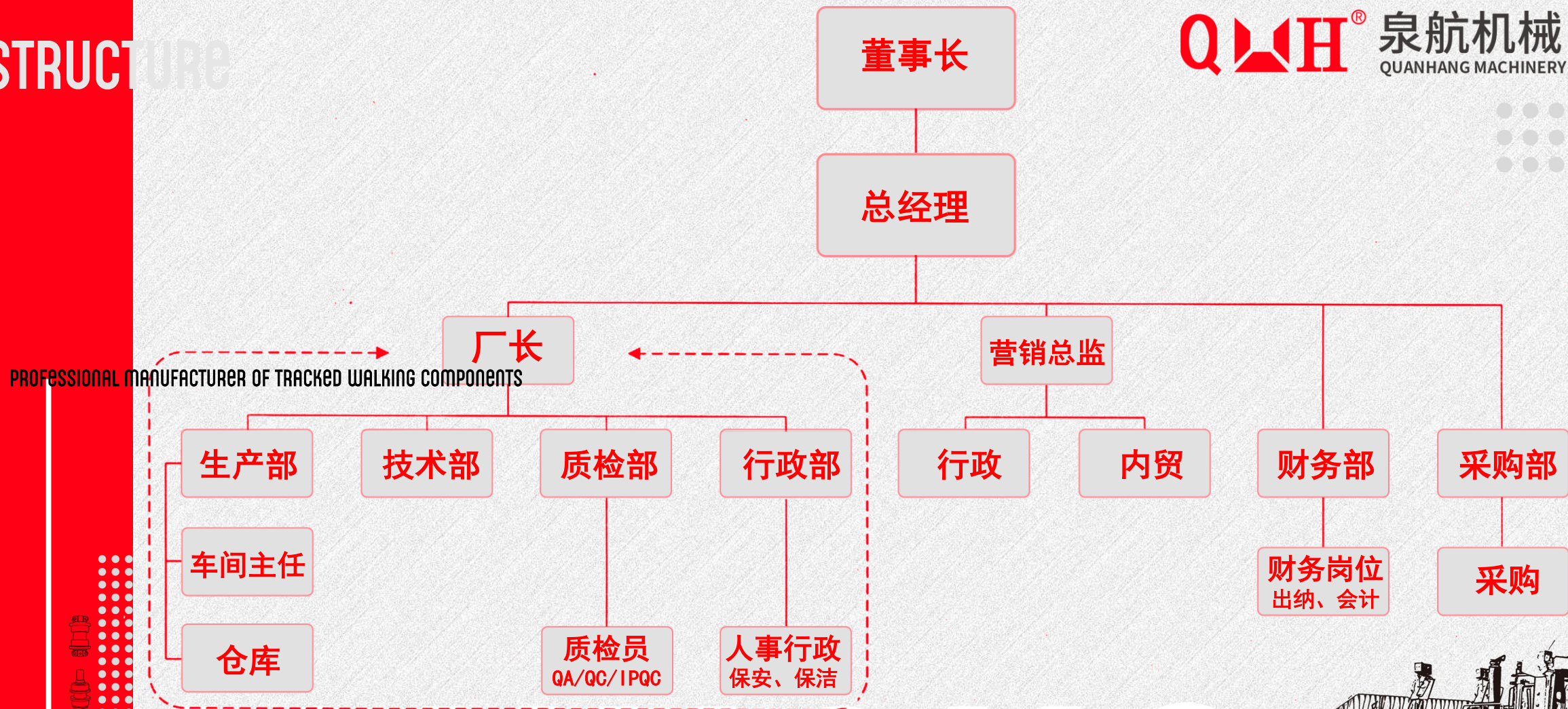


PROFESSIONAL MANUFACTURER OF TRACKED WALKING COMPONENTS



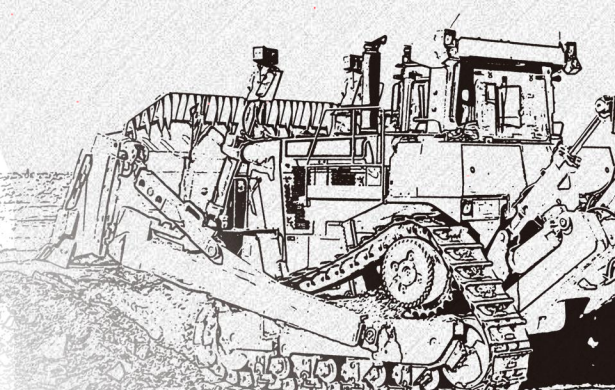


# ORGANIZATIONAL STRUCTURE



PROFESSIONAL MANUFACTURER OF TRACKED WALKING COMPONENTS

**厂长负责制：**  
说明：厂长如有出差或休假，技术总工负责厂务管理，以此类推！



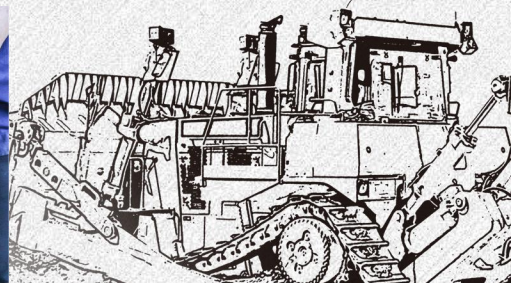


PRODUCTION  
EQUIPMENT



泉航机械  
QUANHANG MACHINERY

PROFESSIONAL MANUFACTURER OF TRACKED WALKING COMPONENTS





# DIG PRODU

PROFESSIONAL MANUFACTURER OF TRACKED WALKING COMPONENTS



Carrier Roller  
托轮



Front idler  
引导轮



Track Roller  
支重轮



Sprocket  
齿圈



Track link  
链条



Track shoe  
链板



Bucket teeth  
斗齿



Bucket edges  
挖掘机挖斗板



Digging buckets  
挖斗



Bolts&Nut  
螺栓



Chain guard  
护链架



Teeth pin  
斗齿销



Bucket pin&Bushing  
斗轴/斗轴套



Bucket link  
千秋架



Bucket rod  
斗连杆



Sticks  
斗杆



U-Shaped Rack  
U型架



Slewing bearings  
回转轴承



Adjusting Cylinder  
涨紧油缸



Boom  
动臂



Motor  
发动机



Slewing motor  
回转马达



Oil cylinder  
油缸



Center connector  
中心接头



Main valve  
主阀



Walking reducer  
行走减速器



Oil absorption,  
Oil return/Filter  
吸油、回油/滤芯



Adjuster's Assy  
油缸总成



Muffler  
消音器



Main Pump  
主泵







unilateral Track Roller  
单边支重轮



Track Roller  
支重轮



Carrier Roller  
拖链轮



Front Idler  
引导轮



Track Chain Assy  
链条总成



Segments  
齿块

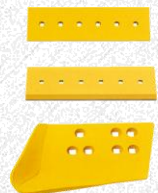


Ripper  
铲斗齿

PROFESSIONAL MANUFACTURER OF TRACKED WALKING COMPONENTS



Bucket  
铲斗



Cutting Edge  
刀片



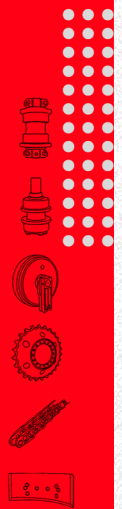
Lift Cylinder  
提升油缸



Tilt Cylinder  
摆缸



Tensioning cylinder  
涨紧油缸





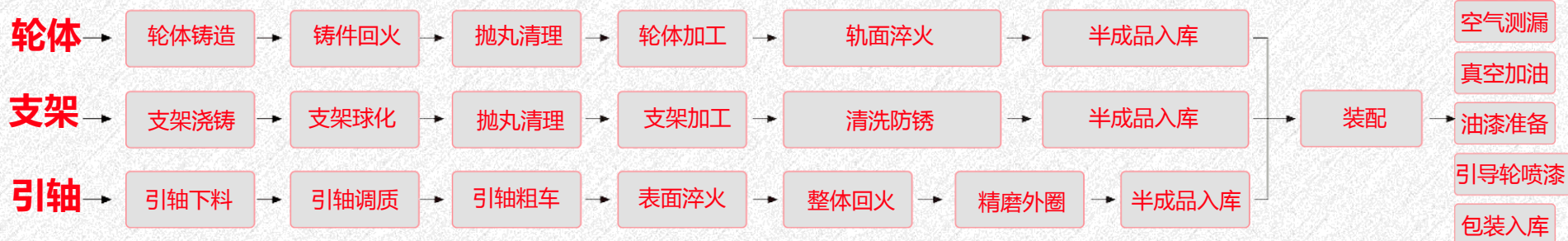


### 支重轮/托链轮



PROFESSIONAL MANUFACTURER OF TRACKED WALKING COMPONENTS

### 引导轮

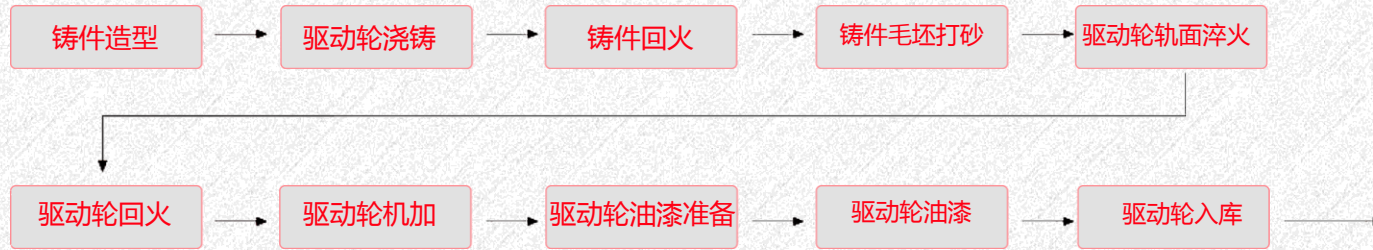


QUANHANG



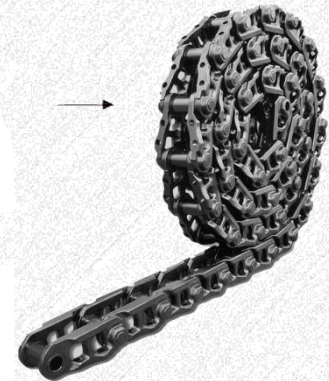


## 驱动轮



PROFESSIONAL MANUFACTURER OF TRACKED WALKING COMPONENTS

## 链条总成

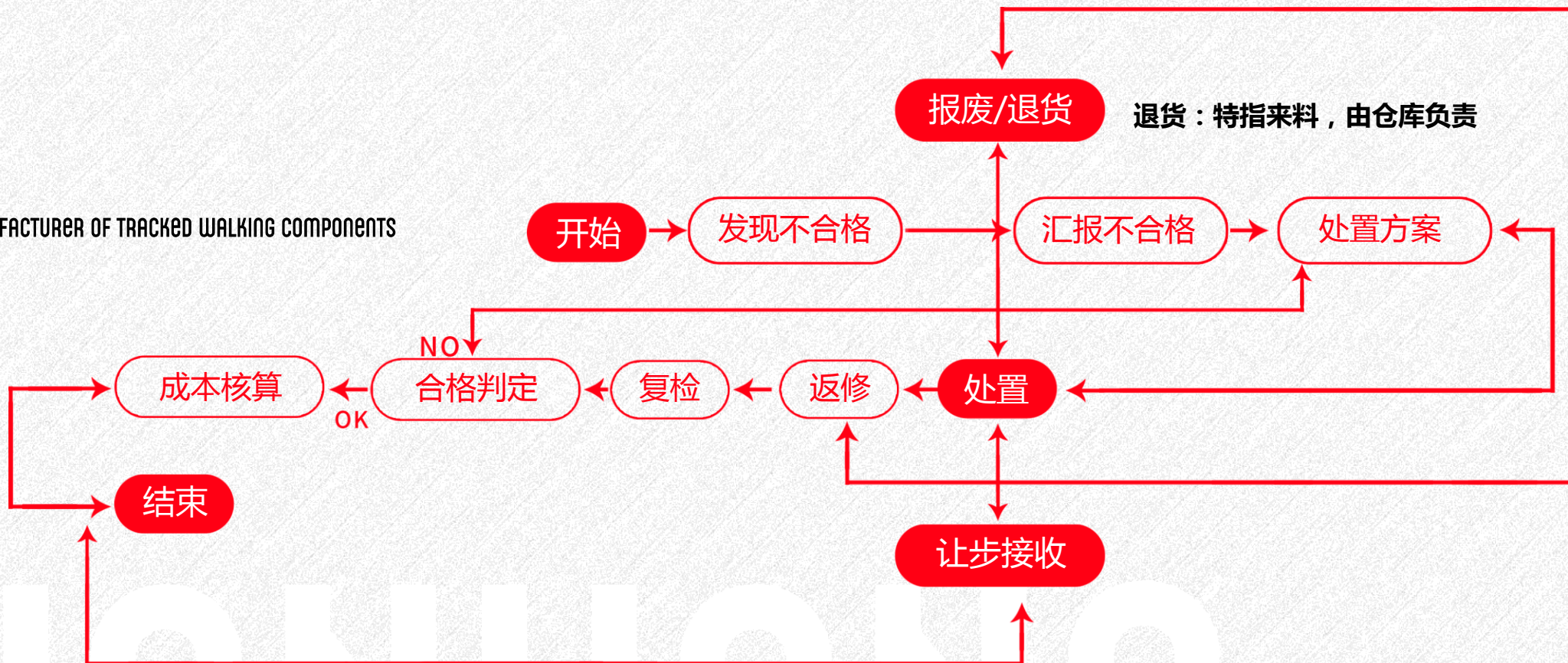




为了确保产品质量，制定了《质量管理程序》系列规章制度。

其中包含：《检验的控制程序》《不合格品控制程序》《纠正和预防措施控制程序》《产品监视和测量控制程序》

PROFESSIONAL MANUFACTURER OF TRACKED WALKING COMPONENTS



退货：特指来料，由仓库负责





FEATURE  
DEVELOPMENT



**QH** 泉航机械  
QUANHANG MACHINERY

PROFESSIONAL MANUFACTURER OF TRACKED WALKING COMPONENTS





**CONTACT  
INFORMATION**



**QUANZHOU CITY QUANHANG CONSTRUCTION MACHINERY CO.,LTD.**

**Address: 102 Jinhe Avenue, Binjiang Industrial Zone, Xiamei Town, Nan'an City, Quanzhou City, Fujian Province**

**Tel:+86 595 26556822 Fax:+86 595 26556823**

**Mobile:+86-13905988940/13559060959**

**Email: qzqlzx@163.com SKYPE: quanhang wuzhiyong QQ: 2861990206**

**Website: [www.china-qhjx.com](http://www.china-qhjx.com)**

**PROFESSIONAL MANUFACTURER OF TRACKED WALKING COMPONENTS**

