

Products: Powerpacks

FROM PROJECT TO POWER

We manufacture **powerpacks of all sizes**, assisting the client from the **design stage** through to the **machine start**, both in **simple construction** and in the **most complex circuits**. We design the products using a studied **modular system** in order to meet **specific requirements**, starting from an optimized **standard model**.



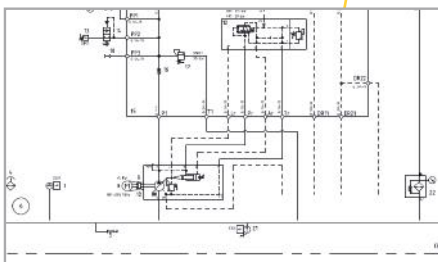
CUSTOMIZATION

Dimensions, positioning of components, brands, connections, options: all of this can be defined in accordance with the specific requirements of each project.



ENERGY SAVING

We advise and assist the client on the complete choice of effective and efficient solutions.



2D DRAWING



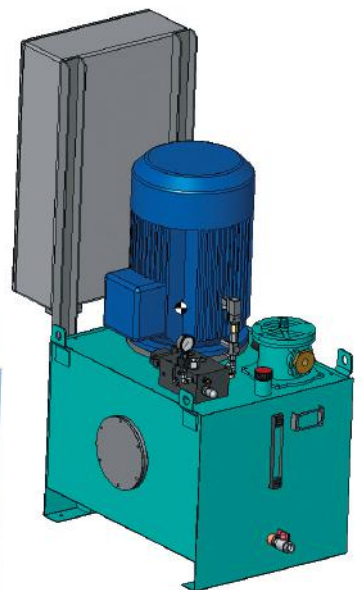
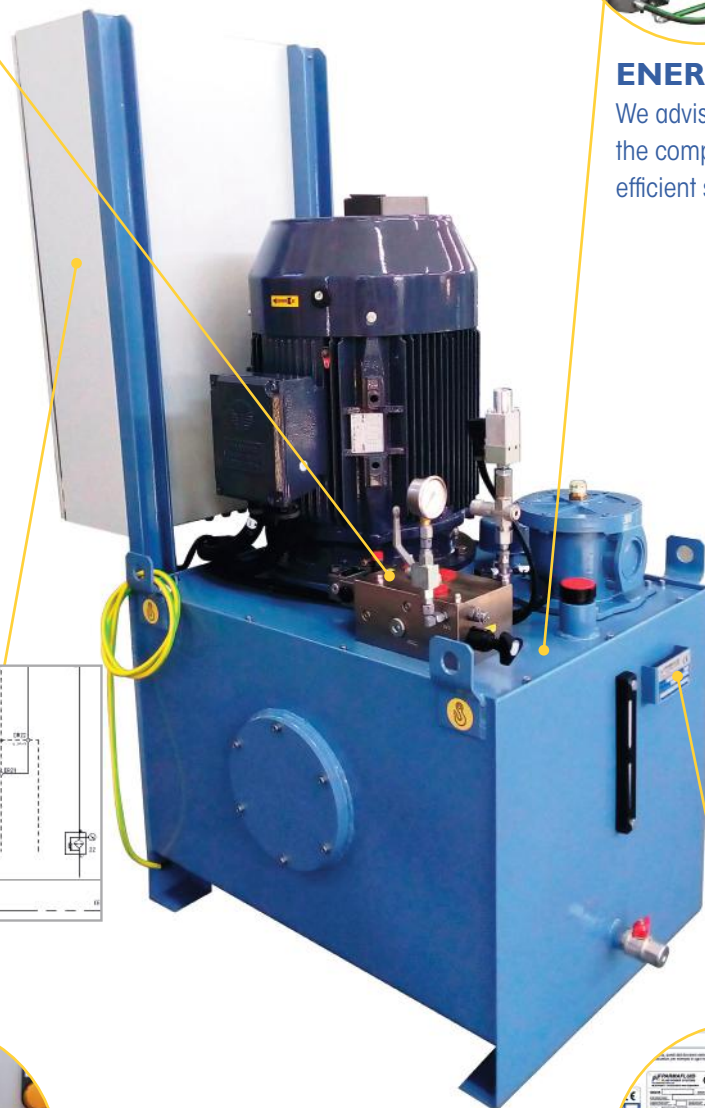
ELECTRICAL SYSTEM

Our specialized internal department can design and produce electrical panels for all of our powerpacks.



CE MARK AND MANUALS

All of our powerpacks carry the CE mark and come with a multi-lingual user and maintenance manual.



3D PROJECT

Products: Powerpacks

APPLICATIONS



OIL & GAS

We are a market **leader** in the production of powerpacks for the **oil and gas extraction** sector both, **on land and at sea**. In full respect of the **standards**, we use **certified flame-proof (Atex)** components always with an eye to **energy saving**.



MARINE & OFFSHORE

We offer **both standard and customized products** for the **marine/naval** field. Our know-how includes **offshore, over the deck and shipboard** powerpacks with a high degree of protection, also **certified** in collaboration with the best known international bodies (**ABS, BUREAU VERITAS, CCS, DNV/GL, LR, RINA**).



INDUSTRIAL

We work with all types of industrial applications, the key sector for hydraulic **powerpacks**. We are experts in specific applications for **hydraulic presses, cnc machines, logistics shuttles (agv, lgv), filtration units, special machines** for sectors such as **CHEMICALS, FOOD, LIFTING, LOGISTICS, MARBLE, PAPER, PLASTIC, RUBBER, RUBBISH DISPOSAL, SHEET METAL, STEEL-WORKS, WOOD**.



MOBILE

The in-line systems in the mobile sector have always been one of our specialities, both in the **supply of components** at a competitive price, and in the **technical support for the client in the designing** of a new machine, to the **research for innovative solutions**. We work in the following sectors every day: **AGRICULTURE, BUILDING, CONSTRUCTION, FORESTRY, LIFTING, MINING, RAILWAYS, COMMERCIAL AND INDUSTRIAL VEHICLES**.