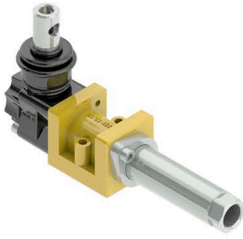


JS100



Specifications

JS100 : 1 Axis Cable Control Joystick
Single lever to control one spool via cable

JS200



Specifications

JS200 : Cable Control Joystick
Single lever joystick to control two spools via cables
Electrical button configurations: Up to 6 buttons IP40 IP44

JSSC100



Specifications

JSSC100 : Sectional Single Function Hydraulic Pilot Valve
Available from 1 to 10 sections
High sensitivity and low force
Flow : From 5 to 20 Lt / Min
Feeding Pressure (on port P) : From 30 to 100 Bar
Max Back Pressure : 3 Bar
Max Hysterisis : 0,5 Bar
Internal Leakage at 30 Bar P to T : 2.5 to 9 cm³
Fluid : Mineral Oil

JSSC400



Specifications

JSSC400 : Hydraulic Joystick
Flow : From 5 to 15 Lt / Min
Single lever joystick to control two spools via hydraulic oil
Electrical button configurations: Up to 6 buttons IP40 IP44

JP100



Specifications

JP100 : Sectional Single Axis Pneumatic Pilot Valve
Available from 1 to 10 sections
Max Feeding Pressure: 150psi