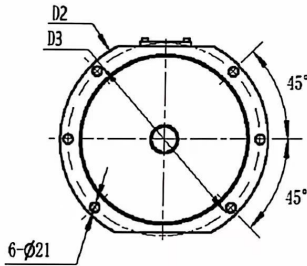
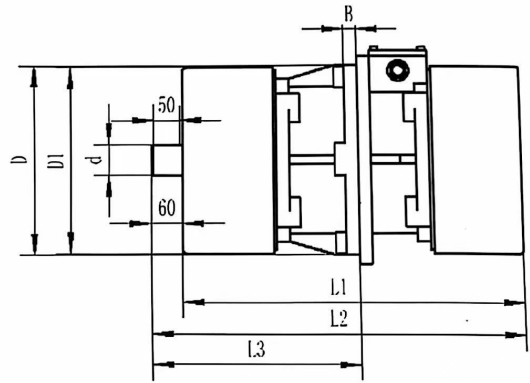
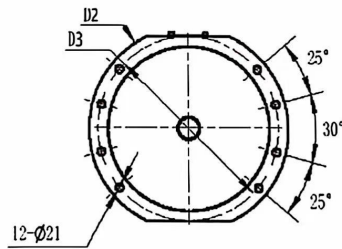


# ZLC系列 振动电机技术参数及安装尺寸

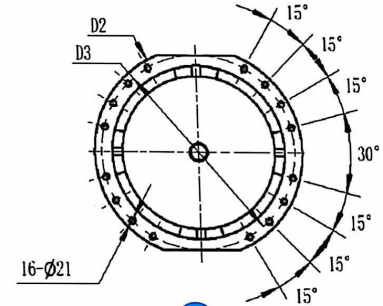
The technical and installation size of ZLC series vibrator motors



A



B



C

序号	型号 Type	转速 RPM	激振力 C.F (KN)	功率 (KW)	电流 (A)	重量 weight (Kg)	安装尺寸 (mm)				外形尺寸Dimension (mm)							
							D	D1	D2	D3	L1	L2	L3	B	d	C	F	图号
1	ZL-50-4C	1460	50	2.5	5.8	210	365	350	455	415	520	595	350	24	60	55	12	A
2	ZL-75-4C	1460	75	4	10.2	270	400	370	500	450	590	660	380	30	60	55	12	B
3	ZL-15-6C	980	15	1.1	3.3	100	280	250	370	330	490	570	335	24	36	32	8	A
4	ZL-25-6C	980	25	1.8	4.6	135	315	300	405	365	560	630	355	24	45	41	8	A
5	ZL-35-6C	980	35	2.4	6	185	365	350	455	415	550	620	350	24	50	45	12	A
6	ZL-50-6C	980	50	3.7	9.8	280	400	370	500	450	590	660	380	30	60	55	12	B
7	ZL-75-6C	980	75	5.5	13.3	360	430	420	530	480	660	730	400	30	60	55	18	B
8	ZL-100-6C	980	100	7.5	18	470	430	420	530	480	816	880	480	30	60	55	18	B
9	ZL-135-6C	980	135	9	21	730	580	504	700	650	800	860	480	36	60	55	18	C
10	ZL-160-6C	980	160	12	28	790	580	504	700	650	920	980	540	36	60	55	18	C
11	ZL-160-8C	740	160	10	28	873	580	504	700	650	1076	1129	609	36	60	55	18	C