

HYDRAULIC EXCAVATOR

KV12

LEKING





## OPERATING PERFORMANCE

Operating weight	1250kg
Bucket capacity	0.025m <sup>3</sup>
Fuel tank capacity	15L
Hydraulic oil tank capacity	15L
Travel speed	1.8-4.0km/h
Swing speed	12r/min
Max. climbing degree	58%
Arm digging force	7.6KN
Bucket digging force	12.5KN
Average grounding pressure	33Kpa
Largest traction	19KN

## HYDRAULIC

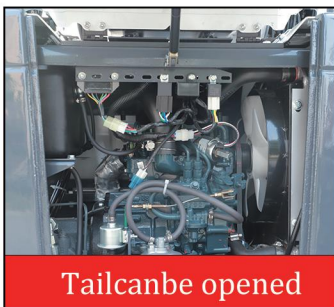
Hydraulic pump model	piston pump
Max. flow	30L/min
Working pressure	19.5Mpa

## ENGINE

Engine model	Kubota Z482
Engine power	8.3kw/r/min
Engine displacement	0.479L
Rated Power/speed	9.9/3600kw/rpm
Air intake form	Inhale naturally

## BASIC SIZE

Overall length	2880mm
Overall width	820-1020mm
Overall height (to top of boom)	2118mm
Overall height (to top of cab)	2265mm



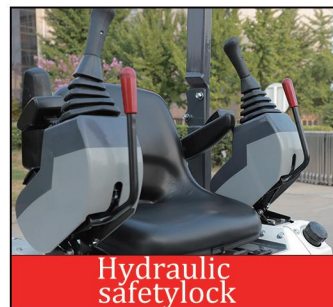
Tail can be opened

1. Convenient inspection and maintenance
2. Three cast iron counterweights to ensure



Armrest box handrest rest

The armrest box has a height-adjustable armrest support, which has excellent ergonomics and is



Hydraulic safety lock

1. Double-sided hydraulic safety locks ensure safe operation when getting on and off the vehicle on both sides
2. Large tilt angle makes getting on and off the



Control System

Convenient travel, dozer blade and chassis telescopic control joystick



Swing boom

Standard big arms side swing function, cast iron side swing head, beautiful and durable



Adjustable track

Standard structure telescopic function, telescopic range 820-1020mm, 180mm wide engineering track.



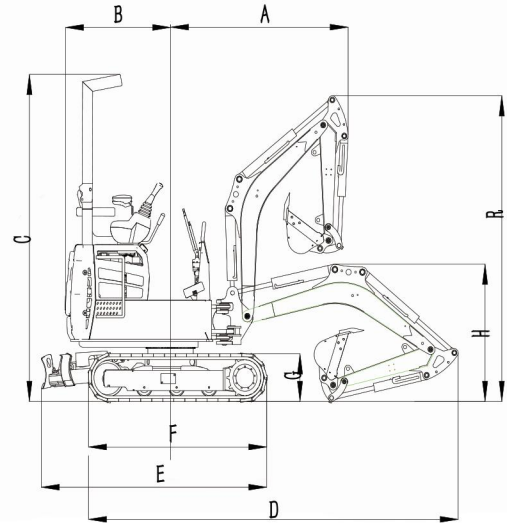
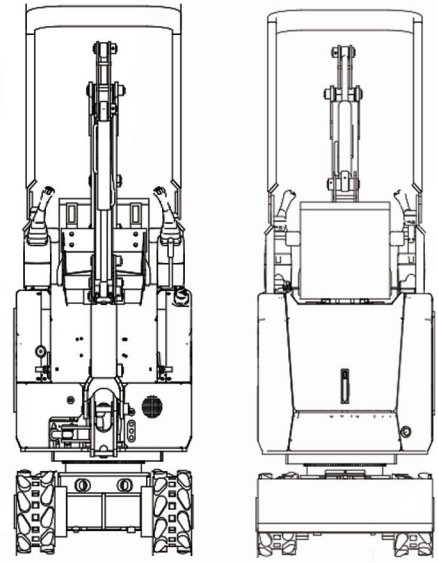
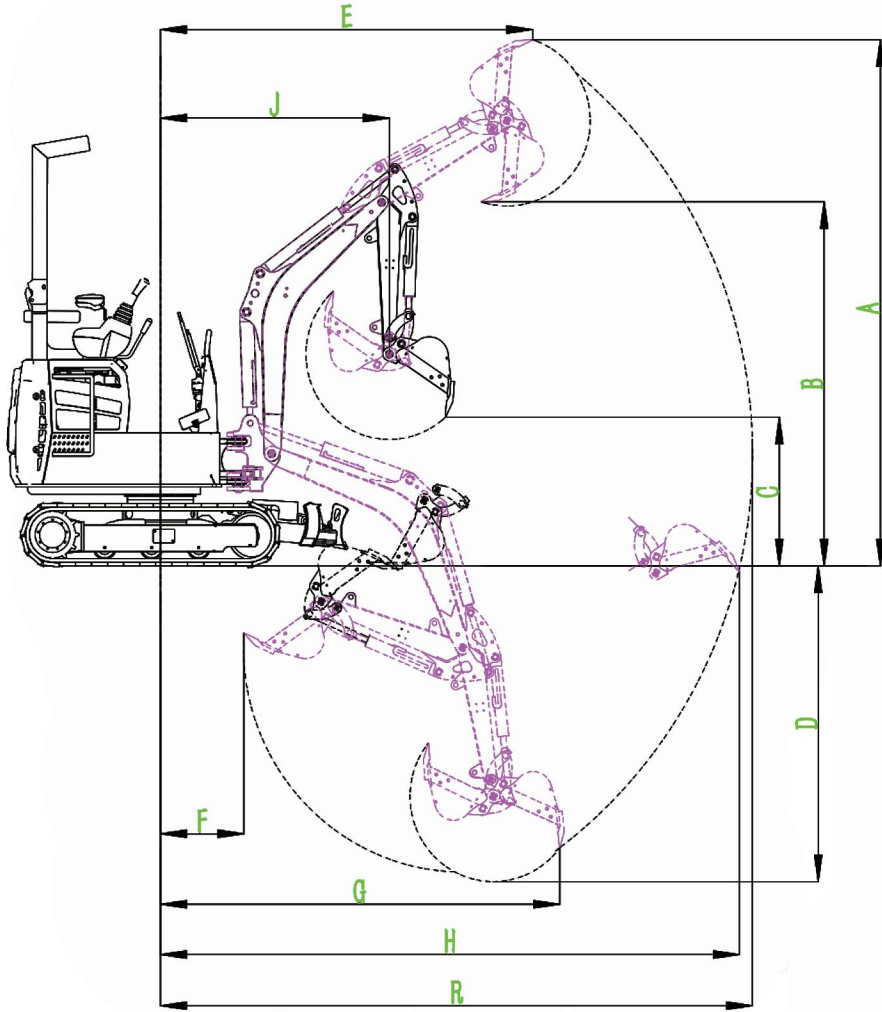
Instrument panel

The instrument panel display screen can display working hours, fuel volume, water temperature, oil pressure, battery voltage, etc., making it easy to observe the health of the



Two-speed walking motor

Plunger motor, two-speed travel, the motor has a protective shell, the travel speed is 2.3Km-4.6Km/h, and the



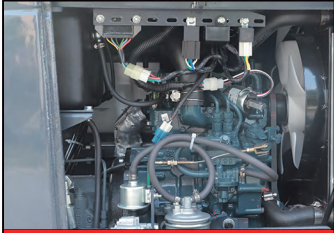
## WORKING SIZE

A-Max.digging height	2771mm
B-Max.dumping height	1917mm
C-Min.dumping height	784mm
D-Max.digging height	1661mm
E-Max.excavation height radius	2005mm
F-Min.excavation radius	450mm
G-Max.excavation depth radius	2151mm
H-Max.surface excavation radius	1318mm
R-Max. excavation radius	3189mm
J-Min.unload height radius	1233mm

## BASIC SIZE

A-Turning radius of front end	1387mm
B-Rear tail radius of rotation	821mm
C-Height of the whole machine	2265mm
D-Full length of the machine	2888mm
E-Full length of lower plate	1760mm
F-Full length of track	1393mm
G-Track High	330mm
H-ARM height	952mm
R-Height of contraction of upper arm	2118mm
J-Full track width (stretch)	820-1020mm
K-Track width	180mm
L-Shoveling width	820-1020mm
M-Width of side roll frame	726mm





Excellent Serviceability



Taifeng brand variable piston pump



Folding anti-roll rack



Two-Speed Travel

The KV12 features many upgrades that will enhance operator comfort, efficiency, and serviceability. To improve fine control and reduce fatigue, the KV12 now features pilot operated joystick controls that are low effort and responsive to operator input.

Additionally, an ISO/SAE pattern change valve has been added enabling the operator to choose their preferred operational pattern. The boom cylinder is now mounted on top of the boom for greater

protection and improved routing of the hydraulic lines which are run through the boom and arm. A hydraulically retractable track frame and the addition of a foldable ROPS frame allow it to easily pass through a standard doorway.

To reduce the likelihood of rear swing impacts, the TB210R also features a short tail swing design. Despite its compact dimensions, service access is exceptional thanks to the tilt-up seat pedestal and access panels



Spacious Operator's Station with New Pilot Operated Joysticks