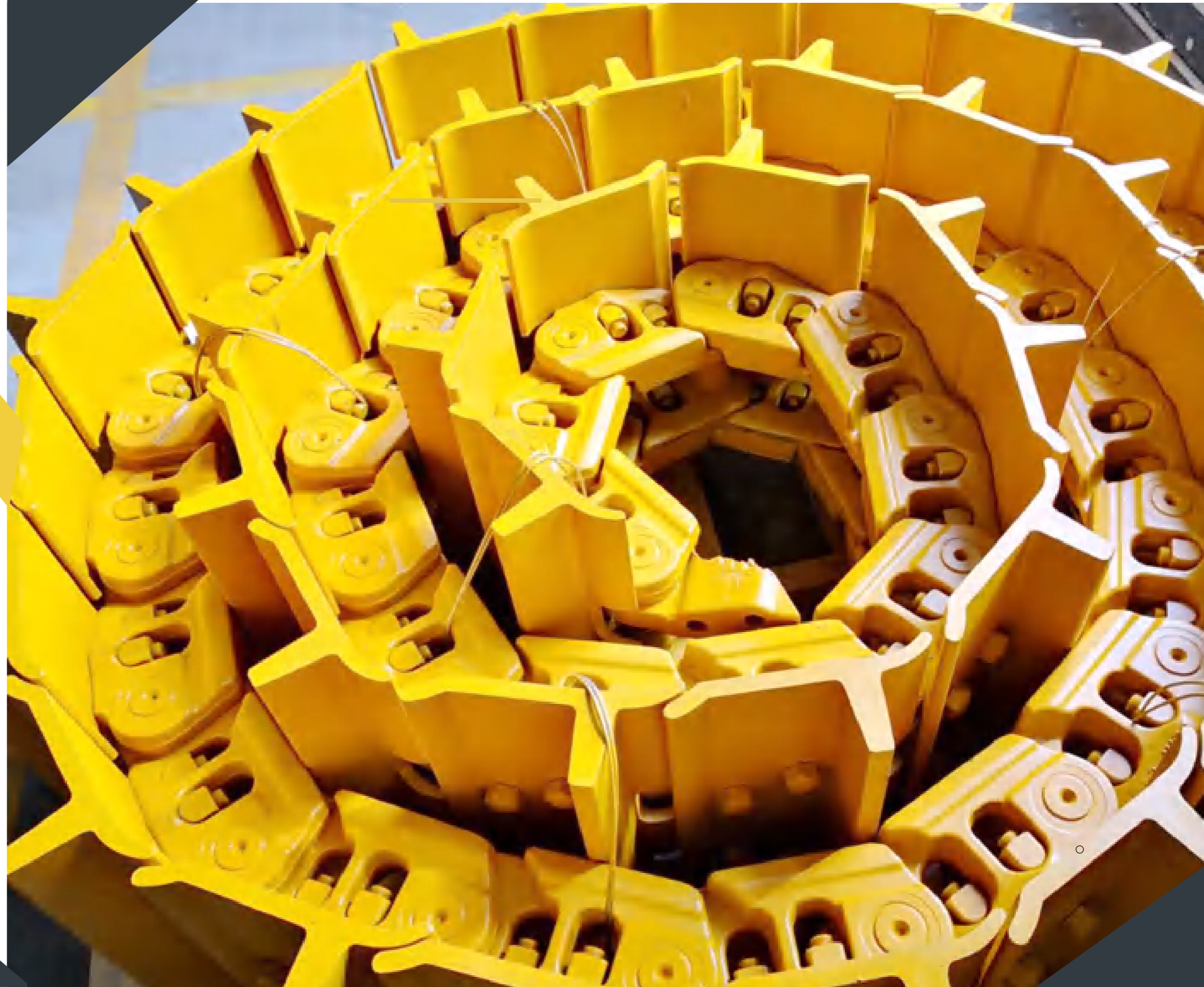




YOUR IDEAL PARTNER OF UNDERCARRIAGE PARTS





ABOUT US

CLIK Tracks Manufacturing (Jiangsu) Ltd. is one of the integrated manufacturers in the world with the state-of-the-art facilities in-house from steel rolling, forging, machining, heat treatment and assembling lines plus testing instruments. Our plant covers 30,000+ square meters in Suqian which benefits from ideal supply chain with over 100 Mtpa steel-making capacity and 8 leading

OEMs within 500km. CLIK Tracks is certified by UKAS ISO9001 with mature quality control system. Quality is the last thing CLIK would compromise. CLIK products are widely trusted by both OEMs like XCMG, Shantui, Liugong and aftermarket customers like Tata iron & coal mining, Danieli, Weir, Vale, Shenhua coal mining, SinoPec, Petro-China, etc.



PRODUCTION FACILITIES



MESH CONVEYING FURNACE



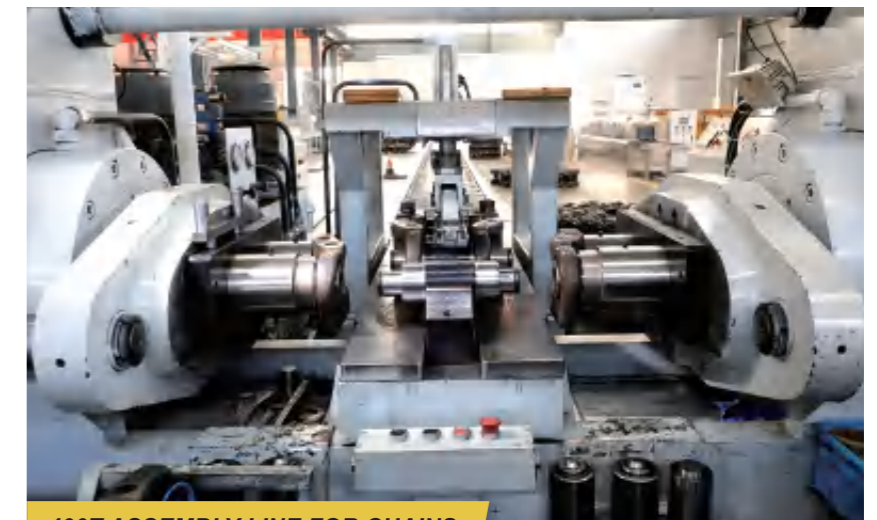
CONTINUOUS HEAT TREATMENT LINE



CARBURIZING FURNACE



LINK TEMPERING



400T ASSEMBLY LINE FOR CHAINS



LINK MAKING MACHINES



WEDM FOR MASTER LINK



1000T TRACK SHOE PRESS



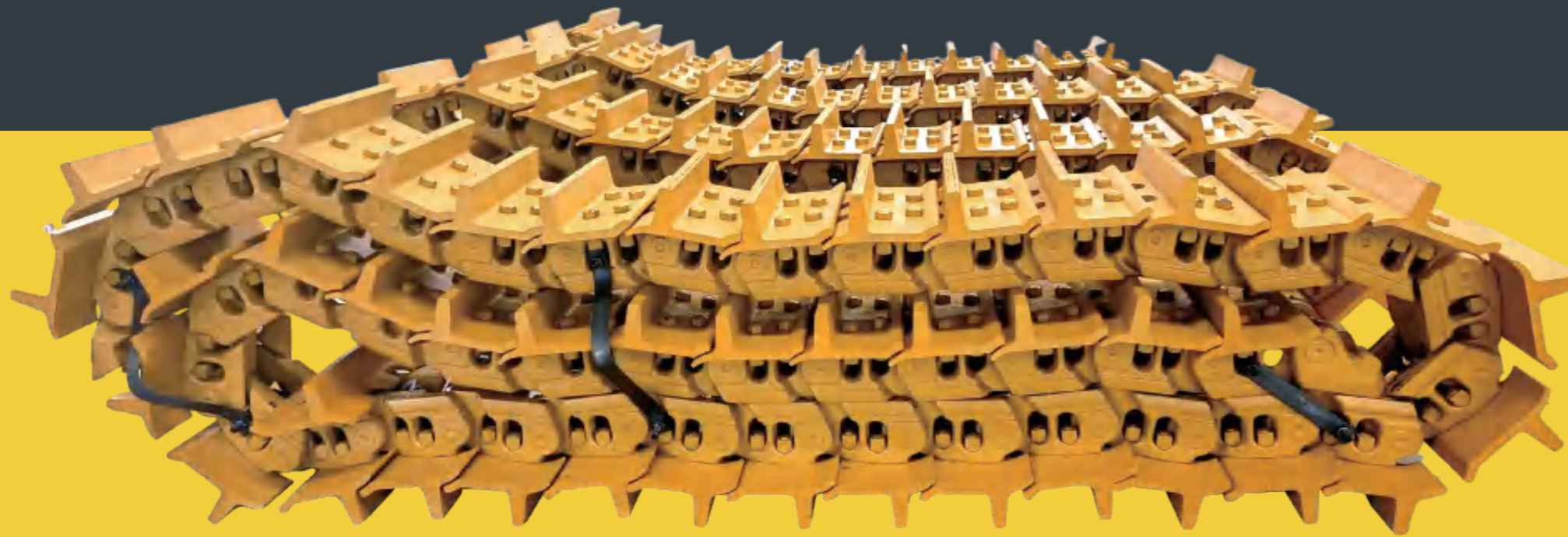
800T TRACK SHOE PRESS



SCREW LINE



PACKING LINE



**QUALITY
THE LAST THING
CLIK WOULD COMPROMISE.**

TESTING AND INSPECTION INSTRUMENTS



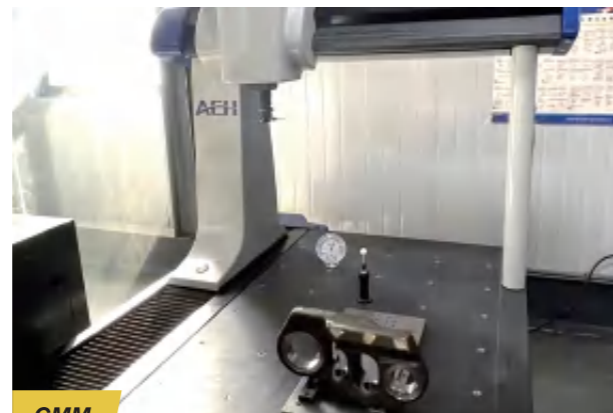
IMPACT TESTING



MAGNETIC PARTICAL TESTING



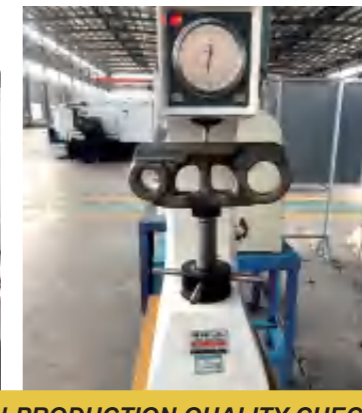
METALLOGRAPHIC SPECIMEN



CMM



IN-PRODUCTION QUALITY CHECKING



CLIK BULLDOZER TRACK LINK ASSEMBLY					
S/N	MACHINE MODEL	DESCRIPTION	PITCH (mm)	OEM NO.	BERCO NO.
1	CAT D2	LINK(35L) 1/2	155.57		LH1/35
2	CAT D2	LINK(35L) 9/16	155.57		AK13
3	CAT D3B	LINK(39L)	155.57	6S8685	CR3657
4	CAT D3C	LINK(36L, SPLIT)	155.57	6Y1171	CR4749
5	CAT D3C	LINK(36L, LUB)	155.57	6Y1339	CR4746
6	CAT D4D	LINK(38L, STD)5/8	171.45	2V2262	CR2849
7	CAT D4D	LINK(36L, STD)9/16	171.45	7K2049	CR2567
8	CAT D4E	LINK(36L, SPLIT)	171.45	1V7072	CR3628
9	CAT D4E	LINK(38L, LUB)	171.45	1V4607	CR3519
10	CAT D4E-EWL/943	LINK(38L, LUB)	171.07	7T4629	CR4261
11	CAT D4H	LINK(39L, LUB)	171.5	3T0352	CR5192
12	CAT D4H-HD/D5M	LINK(44L, LUB)	171.5	108-0954	CR5552
13	CATD6B/955H	LINK(40L, STD)	171.5	2S7570	CR1998
14	CATD5B	LINK(39L, STD)	175.4	5S0816	CR2823
15	CATD5B	LINK(39L, SPLIT)	175.4	3P5757	CR3627
16	CATD5B	LINK(39L, LUB)	175.4	3P3885	CR3520
17	CAT D5B-EWL/953	LINK(40L, LUB)	175.4	7T4637	CR4264
18	CAT D5H	LINK(37L, LUB)	190	6Y3595	CR4805
19	CAT D5H-HD/D6M	LINK(46L, LUB)	190	106-1636	CR5465
20	CAT D6H	LINK(39L, LUB)	203.2	6Y3519	CR4810
21	CAT D6C/D	LINK(36L, STD)	203.2	7S9568	CR3176
22	CAT D6C/D	LINK(36L, SPLIT)	203.2	3P1088	CR3307
23	CAT D6C/D	LINK(36L, LUB)	203.2	3P1118	CR3309
24	CAT D6D-EWL/963	LINK(36L, LUB)	203.2	9W8843	CR4267
25	CAT D6H-HD/D6R	LINK(45L, LUB)	203.2	8E9037	CR5534
26	CAT D7H	LINK(40L, LUB)	215.9	6Y1141	CR5069
27	CAT D7G	LINK(49L, STD)	215.9	8E4274	CR4235
28	CAT D7G	LINK(38L, STD)	215.9	8S2607	CR2576
29	CAT D7G	LINK(38L, SPLIT)	215.9	3P0955	CR3308
30	CAT D7G	LINK(38L, LUB)	215.9	3P0629	CR3116
31	CAT D7G-EWL/973	LINK(40L, LUB) 3/4	215.9	7T4663	CR4268
32	CAT D7G-EWL/973	LINK(40L, LUB) 7/8	215.9	9W9167	CR4700
33	CAT D7R/D7H-HD	LINK(40L, LUB)	215.9	1156301	CR5574
34	CAT D8N/R	LINK(44L, LUB)NON-PPR	215.9	6Y1136	CR4525
35	CAT D8N/R	LINK(44L, LUB)PPR	215.9		
36	CAT D8H/K	LINK(41L, STD)	228.6	7S9186	CR2877
37	CAT D8H/K	LINK(41L, SPLIT)	228.6	8S0396	CR2701
38	CAT D8H/K	LINK(41L, LUB)	228.6	2P9492	CR3149
39	CAT D9N/R/T	LINK(43L, LUB)NON-PPR	240	6Y1130	CR4653
40	CAT D9N/R/T	LINK(43L, LUB)	240	8E7962	CR6479
41	CAT D9G/H	LINK(39L, SML)	260.4	1P1531	CR2154
42	CAT D9G/H	LINK(39L, SPLIT)	260.4	8S1731	CR2672

CLIK BULLDOZER TRACK LINK ASSEMBLY					
S/N	MACHINE MODEL	DESCRIPTION	PITCH (mm)	OEM NO.	BERCO NO.
43	CAT D9G/H	LINK(39L, LUB)	260.4	9W8320	CR3153
44	CAT D9L	LINK(47L, LUB)NON-PPR	228.6		CR6446
45	CAT D10N/R/T	LINK(44L, LUB) NON PPR	260.4	6Y2058	CR5038
46	CAT D10N/R/T	LINK(44L, LUB) PPR	260.4	8E7928	CR6075
47	CATD11N/R/T	LINK(41L, LUB) PPR	317.5	6Y1128	CR5622
48	KOMATSU D20	LINK(37L, STD)	135		KM906
49	KOMATSU D30/31	LINK(41L, STD)	154		KM239
50	KOMATSU D30/31	LINK(41L, SPLIT)	154		KM728
51	KOMATSU D50 LINK	LINK(39L, SPLIT)	175.5		KM492
52	KOMATSU D50 LINK	LINK(39L, LUB)	175.5		KM489
53	KOMATSU D61PX-12	LINK(46L, LUB)	190	13G-32-00010	KM2868
54	KOMATSU D60/65	LINK(39L, STD)	203.2	141-32-00045	KM953
55	KOMATSU D60/65	LINK(39L, SPLIT)	203.2		KM952
56	KOMATSU D60/65	LINK(39L, LUB)	203.2	141-32-00063	KM951
57	KOMATSU D65PX-12	LINK(45L, LUB)	203.2	14Y-32-00020	KM2094
58	KOMATSU D65E-12	LINK(39L, LUB)	203.2	14X-32-00010	KM2094
59	KOMATSU D85ESS-2	LINK(42L, LUB)	203.2	14U-32-00010	KM2094
60	KOMATSU D65EX-15	LINK(45L, LUB)	203.2	14Y-32-00110	KM3467
61	KOMATSU D80/85/D85ESS-1	LINK(38L, STD)	215.9	154-32-00123	KM1103
62	KOMATSU D80/85/D85ESS-1	LINK(38L, SPLIT)	215.9	154-32-00123	KM1102
63	KOMATSU D80/85/D85ESS-1	LINK(38L, LUB)	215.9	154-32-00136	KM1099
64	KOMATSU D155A-1	LINK(41L, STD)	228.6	175-32-00103	KM325
65	KOMATSU D155A-1	LINK(41L, SPLIT)	228.6	175-32-00154	KM495
66	KOMATSU D155A-1	LINK(41L, LUB)	228.6	175-32-00113	KM425
67	KOMATSU D155A-2/D155A-5/6	LINK(41L, STD)	228.6	175-32-00411	KM2661
68	KOMATSU D155A-2/D155A-5/6	LINK(41L, SPLIT)	228.6		KM1270
69	KOMATSU D155A-2/D155A-5/6	LINK(41L, LUB)	228.6	175-32-00400	KM1267
70	KOMATSU D275A-5	LINK(39L, LUB)	260.4	17M-32-00400	KM3593
71	KOMATSU D375A-1	LINK(42L, LUB)	260.4	195-32-00190	KM2544
72	KOMATSU D355A-3 /D355A-5/D355C-5	LINK(39L, STD)	260.4		KM596
73	KOMATSU D355A-3 /D355A-5/D355C-5	LINK(39L, SPLIT)	260.4	195-32-00117	KM649
74	KOMATSU D355A-3 /D355A-5/D355C-5	LINK(39L, LUB)	260.4	195-32-00139	KM426
75	KOMATSU D375A-2/D375A-3 /D375A-5/D375A-6	LINK(40L, LUB)	280	195-32-00400	KM1274/KM3599
76	KOMATSU D475A-1/2	LINK(39L, LUB)	317.5	198-32-00080	KM3180
77	KOMATSU D475A-5	LINK(41L, LUB)	317.5		
78	CASE 350	LINK(33L)	149.2	R41051	CA307
79	CASE 450	LINK(37L)	149.2	D49614	CA274
80	CASE 450C	LINK(36L, STD)	152.4	R52283	CA744
81	CASE 450C	LINK(36L, LUB)	152.4	R52292	CA725

CLIK BULLDOZER TRACK LINK ASSEMBLY					
S/N	MACHINE MODEL	DESCRIPTION	PITCH (mm)	OEM NO.	BERCO NO.
82	CASE 550E/G	LINK(37L, STD)	159.8	R57371	CA865
83	CASE 550E/G	LINK(37L, LUB)	159.8	R57372	CA864
84	CASE 850	LINK(38L,STD)	158.8	R49303	CA695
85	CASE 850	LINK(38L, LUB)	158.8	R51133	
86	CASE 1150D	LINK(40L, STD)	169.62	R51200	CA706
87	CASE 1150D	LINK(43L, LUB)	169.62	R51184	CA681
88	CASE 850E	LINK(38L, STD) 9/16	171	4020063	R56723
89	CASE 850E	LINK(35L, LUB)9/16	171	129020A1	
90	CASE 850E	LINK(38L, STD) 5/8	171		
91	CASE 850E	LINK(38L, LUB) 5/8	171	295202A1	CA847
92	CASE1450B	LINK(36L, SPLIT)	203.2	R56502	CA575
93	CASE1450B	LINK(36L, LUB)	203.2	R56714	CA574
94	JOHN DEERE JD350D	LINK(36L)	146		ID627
95	JOHN DEERE 450E/G	LINK(36L, STD) 9/16"	159.8		ID781
96	JOHN DEERE 450E/G	LINK(36L, LUB) 9/16"	159.8		ID782
97	JOHN DEERE 450E/G	LINK(37L, LUB) 9/16",54mm	159.8		ID1354
98	JOHN DEERE 450B/D	LINK(37L, STD) 1/2"	159.8		ID567
99	JOHN DEERE 450B/D	LINK(39L, LUB) 1/2"	159.8		ID595
100	Liebherr PR734	Link (42L, Lub)	203		
101	Liebherr PR754	Link (44L, Lub)	228		
102	Liebherr PR764	Link (44L, Lub)	240		
103	Liebherr PR776	Link (44L, Lub)	260		
104	Liebherr PR984C	Link (40L, Lub)	280		

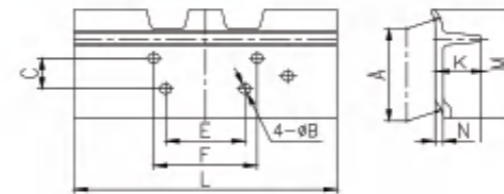
CLIK EXCAVATOR TRACK LINK ASSEMBLY					
S/N	MACHINE MODEL	DESCRIPTION	PITCH (mm)	OEM NO.	BERCO NO.
1	CAT E70	LINK(42L)	135	1028077	MT24/42
2	CAT EX100	LINK(41L)	171.45	417479	CR4854/41
3	CAT 213/215	LINK(49L)	171.45		CR2849/49
4	CAT E110	LINK(43L)	171.45		CR1766/43
5	CAT 225	LINK(43L)	171.1		CR4858/43
6	CAT 225B	LINK(46L)	175.5	5A5293	CR5035/46
7	CAT 225D	LINK(49L)19.3mm	190	6Y8184	CR5011/49
8	CAT 320	LINK(45L)	190	9W9354	CR5350/45
9	CAT 325	LINK(45L)	203	6Y0854	CR5489/45
10	CAT 330	LINK(45L)	215.9	6Y2755	CR5936/45
11	CAT 235	LINK(49L)	215.9	8E4274	CR4235/45
12	KOMATSU PC60-3	LINK(42L)12.3mm	135	201-32-00131	KM906

CLIK EXCAVATOR TRACK LINK ASSEMBLY					
S/N	MACHINE MODEL	DESCRIPTION	PITCH (mm)	OEM NO.	BERCO NO.
13	KOMATSU PC60-6/PC75	LINK(39L)14.3mm	154	201-32-00011	KM1686/3041
14	KOMATSU PC120-3	LINK(43L) 14.3mm	154	202-32-00010	KM965
15	KOMATSU PC 100-5	LINK(42L)16.3mm	175	203-32-00101	KM1262
16	KOMATSU PC200-5/6	LINK(45L)20.3mm	190	20Y-32-00013	KM782
17	KOMATSU PC200-5/6	LINK(49L) None Seal	190		KM782UNS/49
18	KOMATSU PC200-3	LINK(46L)18.3mm	190	206-32-00011	KM1170
19	KOMATSU PC200-3	LINK(46L) None Seal	190		KM1170UNS
20	KOMATSU PC300-3	LINK(47L)20.0mm	203	207-32-00050	KM959
21	KOMATSU PC300-3	LINK(47L) None Seal	203		KM959UNS/47
22	KOMATSU PC300-5	LINK(47L)22.0mm	203	207-32-00101	KM1617
23	KOMATSU PC300-6	LINK(48L)	216	207-32-00300	KM2233
24	KOMATSU PC400-3	LINK(53L)22.3mm	216	208-32-00040	KM973
25	KOMATSU PC400-5	LINK(49L)24.3mm	216	208-32-00101	KM1402
26	KOMATSU PC400-6	LINK(49L)	228.6	208-32-00300	KM2489
27	KOMATSU PC650	LINK(51L)	260.4	209-32-00101	KM596
28	KOMATSU PC1100-6/PC1250-7	LINK(48L)	280	21N-32-00101	KM2346
29	HITACHI EX40/45	LINK(38L)	135	9087953	
30	HITACHI EX60	LINK(37L)	154	9096710	HT418
31	HITACHI EX100	LINK(41L)	171.45	995398	CR4854
32	HITACHI EX100M(EX150)	LINK(45L)	171.45	AT159899	HT420
33	HITACHI EX200-1	LINK(48L)	175.5	9066724	HT17
34	HITACHI EX200-3	LINK(46L)	190	9092517	KM1170
35	HITACHI EX300	LINK(47L)	203	9140549	KM959
36	HITACHI ZX330	LINK(45L)	216	9202851	KM2233
37	HITACHI EX400-1	LINK(49L)	216	9084353	MT14A
38	HITACHI EX550	LINK(53L)	228.6	9137494	
39	HITACHI EX 1100-3	LINK(52L)	260.35	9104792	HT229/52
40	HITACHI EX1200-6	LINK(49L)	280	9276370	KM2346
41	HITACHI EX1900	LINK(49L)	317.5	9163813?	
42	HYUNDAI R210-7	LINK(49L)	190	81EM-20010	KM782/49
43	HYUNDAI R280	LINK(51L)	203	81EM-35010	KM959/51
44	HYUNDAI R290-7	LINK(48L)	216		KM2233
45	HYUNDAI R360	LINK(51L)	216	81EH-20010	
46	HYUNDAI R450	LINK(53L)	216	84E7-00190	
47	DAEWOO S220	LINK(52L)	175.5	2272-1025	HT17/52
48	DAEWOO S220-3	LINK(49L)	190		KM782/49
49	DAEWOO S280	LINK(47L)	203		KM959/47
50	KOBELCO SK300	LINK(47L)	203	5603941	CR5060



OUR PRODUCTS-TRACK SHOES

The main technical data of track shoe (Bulldozers)

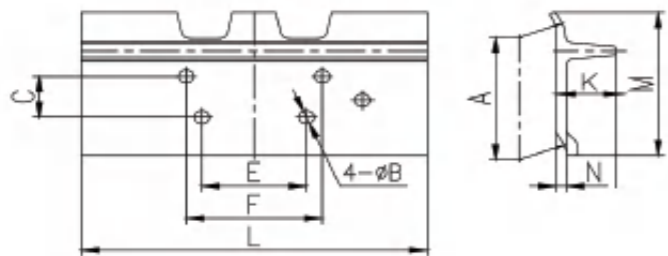


Technical specifications (for reference only)

Surface Hardness: HB392-474 (HRC42-49)
 Tensile: 1372Mpa min.
 Yield Strength: 1176Mpa min.
 Elongation: 10% min.

S/N	Main Dimensions (mm) (for reference only)									Machine Model
	A	B	C	E	F	K	L	M	N	
1	101	10.5	22	55	55	45	300	100	8	T101
2	135	12.5	43	72	99	45	300	139	8	D20
3	135	13.5	46	76	106	45	300	139	8	BD2G
4	140	12.5	52	86	86	50	305	159	9	MZY140
5	140	12.5	52	94	94	50	305	159	9	ATLS-D7
6	149	12.5	52	84.2	84.2	50	280	159	9	JK149
7	154	14.5	57	82.4	112.4	59	410	181.5	9.5	D31
8	154	14.5	57	73	89	59	410	181.5	9.5	PC60-7
9	155.6	14.5	54.8	88.9	104.7	59	410	181.5	9.5	D3C/K
10	160	14.5	56	99	99	59	330	181.5	9.5	ATLS-D9
11	161.8	14.5	57	73	89	49	400	182	9.5	D31(154)
12	161.8	14.5	57	82.4	112.4	49	400	182	9.5	D3E(154)
13	171	16.5	58.75	125.4	144.5	50	450	199.6	12	K907;T90;T100
14	171	16.5	57	122.4	158.4	50	400	199.6	12	D50;D53;D58E;D40
15	171	16.5	60.3	107.9	107.9	50	450	199.6	12	D4D;D4E
16	171	16.5	57	103.8	144	50	500	199.6	12	D4H
17	190	20.5	62	124.4	160.4	50	500	218	12.5	PC200
18	190	21	69	119.57	155.57	50	500	218	12.5	CAT320
19	203	20.5	72.2	138.3	178.3	60/65	510	238/232.5	12/14	D60;D65E-12;D85ESS-2;SD16;TY130;T140; T150;TY160 ;TBY160
20	203	19.5	72.2	138.3	178.3	60/65	560	238/232.5	12/14	D65E-8
21	203	19.5	76.2	133.4	171.5	60/65	560	238/232.5	12/14	D6D;D6C;D6G
22	203	20.5	68	137.3	185.3	60/65	560	238/232.5	12/14	D6R
23	215	20.5	76.2	146	184	72	560	250	14.3	D80;D85;TY220;SD22;SD23;D85A-12
24	215	19.5	76.2	146	184	72	560	250	14.3	Cat D7G;D7
25	215	19.5	74.62	154.9	199.39	72	610	250	14.3	TD20
26	215	20.5	70	149.5	205.5	72	610	250	14.3	D7H
27	215	23.2	63	146.1	204.1	72	560	250	14.3	D8N/R/T/L; PR754
28	215.9	23.2	63	146.1	204.1	82	560	256.5	17	D8N/R/T/L; PR754
29	216	23.2	63	146.1	204.1	82	610	245.5	19	D8N/R/T/L; PR754
30	216	24.5	76.2	146	184	82	710	245.5	19	CAT345B;PC400-5;ZX450 (mud hole, clipped corner)
31	228.6	24.5	76.2	169	219.8	80	560	268	17	D155;D150;TY330;TY320B;DGY70;SD32
32	228.6	23.5	76.2	169.8	201.6	80	560	268	17	D8K;D8H
33	228.6	26.5	63.5	169	235	80	610	268	17	D9L
34	228	24.5	76.2	169	219.8	77.5	610	261	19	D155

The main technical data of track shoe (Heavy Bulldozer track shoes)



Technical specifications (for reference only)

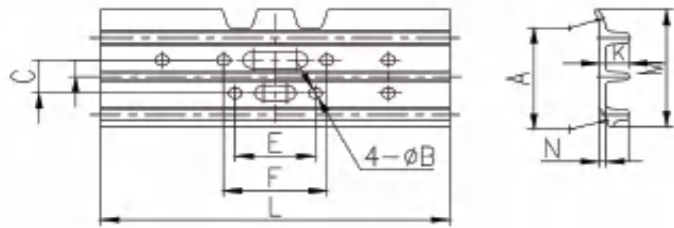
Surface Hardness: HB392-474 (HRC42-49)
 Tensile: 1372Mpa min.
 Yield Strength: 1176Mpa min.
 Elongation: 10% min.
 Sharpy Impact: 68.6J min.

S/N	Main Dimensions (mm) (for reference only)									Machine Model
	A	B	C	E	F	K	L	M	N	
1	240	26.3	74.5	170	230	84	610	285	20	Caterpillar D9N/R/T, Liebherr PR764
2	260.5	30	80	190	250	89.7	610	303	20.5	Caterpillar D10N/R/T, Extreme Service
3	260.5	27.5	76.2	184.2	235	89.7	610	303	20.5	Komatsu D275/D355,Extreme Service
4	260.35	30	80	190	250	100	610	299	23	Caterpillar D10N/R/T, Super Extreme Service
5	260.35	27.5	76.2	184.2	235	100	610	299	23	Komatsu D275/D355, Super Extreme Service
6	280	31	82.5	184	253.4	93	610	322	23	Komatsu D375, Extreme Service
7	317.5	35.8	94	225.5	291.5	102	710	369	25	Caterpillar D11N/R/T, Extreme Service
8	317.5	33.8	96	222	288	102	710	369	25	Komatsu D475, Extreme Service
9	317.5	35.8	94	225.5	291.5	103	710	366	28	Caterpillar D11N/R/T, Super Extreme Service
10	317.5	33.8	96	222	288	102	710	366	28	Komatsu D475,Super Extreme Service



OUR PRODUCTS-TRACK SHOES

The main technical data of track shoe (Excavator-Triple grouser)

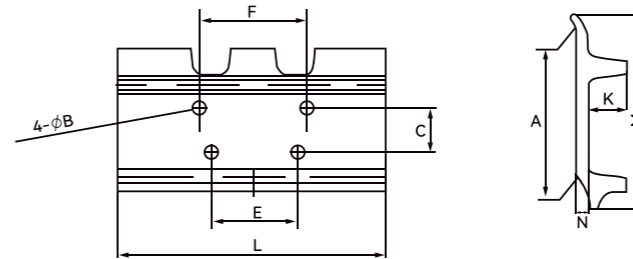


Technical specifications (for reference only)

Surface Hardness: HB392-474 (HRC42-49)
 Tensile: 1372Mpa min.
 Yield Strength: 1176Mpa min.
 Elongation: 10% min.

S/N	Main Dimensions (mm) (for reference only)										Machine Model
	A	B	C	E	F	K	L	M	N		
1	135	12.5	43.4	72	99	14	400	154	6	PC60-3-5,S50,D20; Sumitomo 65(rubber hole φ14)	
2	135	13.2	43.4	72	99	14	400	154	6	PC60-3-5	
3	135	12.5	46	64	94	14	400	154	6	PC40-7; PC45; PC50-7/8; SK40(rubber hole φ14)	
4	154	14.25	57	73	89	20	450	165	6/8	PC60-6	
5	154	14.3	55	90	90	20	450	165	6/8	EX60	
6	171.5	16.21	60.4	108	108	20	500	190	8/9.5	EX100	
7	171.5	16.3	57	86.4	102.4	20	500	190	8/9.5	PC120;PC100	
8	170.7	16.21	60.4	108	108	25	600	198.9	8/8.5/9.5/10	EX100-1/2/3/5; EX120-1/3; DH120	
9	170.7	16.5	58.9	125.4	144.5	25	600	198.9	8/8.5/9.5/10	Hyundai210	
10	187.9	20.5	62	124.4	160.4	26	600	217.5	10	PC200	
11	190	20.5	62	124.4	160.4	26	600	219	8.5/10/12	PC200-5/6/7;PC220; PC230; DH220; S220;	
12	190	18.5	62	124.4	160.4	26	600	219	8.5/10/12	Hitachi EX200-2/5,EX210; PC200-2/3; ZAX230; EX220	
13	190	21	69	119.6	155.6	26	600	219	8.5/10/12	CAT320;E200B;EL200B;E320C;Kobelco SK200; Sumitomo 200;Sumitomo340,SH200,SK230	
14	203	20.5	72.2	138.4	178.4	28	600	236	11/13	PC300-5/1/3; DH280, DH320; VOLVO290; EX300-3	
15	203	20.5	76.2	146	184	28	600	236	11/13	Hyundai 450	
16	203	21	72	129	179	28	600	236	11/13	CAT325;E325ST; SK300	
17	216	22.5	76.2	140.4	178.4	30;36	600	247	11/14;13/16/18	PC300-6,PC270-7; EX300-5,EX350LC-5; ZAX330/350	
18	216	23	76.2	146	184	30;36	600	247	11/14;13/16/18	EC360BLC;EC460; PC300HD;PC400; EX400;	
19	216	24.6	76.2	146	184	30;36	600	247	11/14;13/16/18	PC400-5/6	
20	216	23	76.2	140	190	30;36	600	247	11/14;13/16/18	CAT 235-7;E330;SK300;SK400	
21	216	24.6	76.2	144	184	30;36	600	247	11/14;13/16/18	PC400-6	

The main technical data of track shoe (Excavator-Double grouser)



Technical specifications (for reference only)

Surface Hardness: HB392-474 (HRC42-49)
 Tensile: 1372Mpa min.
 Yield Strength: 1176Mpa min.
 Elongation: 10% min.

S/N	Main Dimensions (mm) (for reference only)										Machine Model
	A	B	C	E	F	K	L	M	N		
1	190	21	69	119.57	155.57	35	600	217	13	E200B	
2	203	20.5	72.2	138.4	178.4	42	600	235	14.5	PC300-1	
3	216	24.6	76.2	146	184	49	600	251	15.5	PC400-5; CAT345B	
4	260	27.5	76.2	184.15	234.95	50	650	302	21/23.5	ZX870;	
5	260	34	79.5	183	256.6	50	700	302	21/23.5	PC1100-6; PC1250-7;EX1200-6	

CLIK IS ALSO CAPABLE OF SUPPLYING IDLERS, SPROCKETS, ROLLERS AND TAILOR-MADE PRODUCTS SUCH AS A PACKAGE WITH OUR TECHNICAL INVOLVEMENT AND SUPPLY CHAIN MANAGEMENT.



TRUSTED FOR OUR STANDARDS



ACM

Certificate of Registration

This is to certify that the
Quality Management System
of

CLIK Tracks Manufacturing (Jiangsu) Limited
Unified social credit code: 91321324MA22U9BM0F
Registered Address
No.8, Jingsan Road, Machinery Industrial Park
Sihong Economic Development Zone, Sihong County
Office & Production Address
No.8, Jingsan Road, Machinery Industrial Park
Sihong Economic Development Zone, Sihong County
Suqian, Jiangsu, China

Has been independently assessed and is
compliant with the requirements of:

ISO 9001:2015

For the following scope of activities:

**Production of Track Shoes, Links, Chain Assemblies
and Track Assemblies**

Certificate Number: 22ACM16127Q

Date of initial registration 01/05/2022
Certificate expiry 30/04/2025
(subject to the company maintaining its system to the required standard)



AUTHORISED SIGNATORY
Date of this certificate 01/05/2022, V1

During validity period of the certificate a surveillance
audit should be carried out once within each 12 months.
The label should be pasted on specified position of right
side of the certificate then it is valid. The certificate can
be checked out at China CNCA website(www.cnca.gov.cn)
and ACM UK website(www.acmcert.com).



ACM-CCAS Limited, Unit 5 Merus Court, Meridian Business Park, Leicester, LE19 1RJ, UK
Local Office-ACM (CHINA) LIMITED, Rm B201, No 352, Waihuan Road, Minhang District, Shanghai 201199, China
T: +86 21 64305860 F: +86 21 64881096 W: www.acmcert.com.cn E: info@acmcert.com.cn

GLOBAL NETWORK

Plant

CLIK TRACKS MANUFACTURING (JIANGSU) LTD.

Address: No. 8 Jingsan Road, Machinery Industrial Park, Sihong, Suqian, 223900, China
Tel: +86527 86388086 Allan Liu: +86 13916419334 Email: inquiry@steelclik.com

Head sales & marketing office

STEEL CLIK (SHANGHAI) LTD.

Address: Suite B, 9F, Jiushi Fuxing Mansion, 918 Huaihai Rd.(M) Shanghai, 200020, China
Tel: +86 2152839060, Pink Chen: +86 13472780323 Email: inquiry@steelclik.com

South East Asia

CLIK METALS SDN BHD

Address: Gamuda Biz Suites, Unit E-06-02, No. 12, Persiaran Anggerik Vanilla 31/99,
Kota Kemuning, 40460 Shah Alam, Selangor, Malaysia
Tel: Richard Tong +60 122825228 Email: richard.tong@steelclik.com

PT CLIK MINING SERVICES

Address: 18 Office Park 5th Floor
JI TB Simatupang No.18 Kebagusan-Pasar Minggu
Jakarta Selatan, DKI Jakarta, Indonesia
Tel: Mamun Munandar +62 8118880260
E-mail: m.munandar@steelclik.com

India

E-mail: arvind.prasad@steelclik.com

North America

E-mail: america@steelclik.com

