

出口型企业

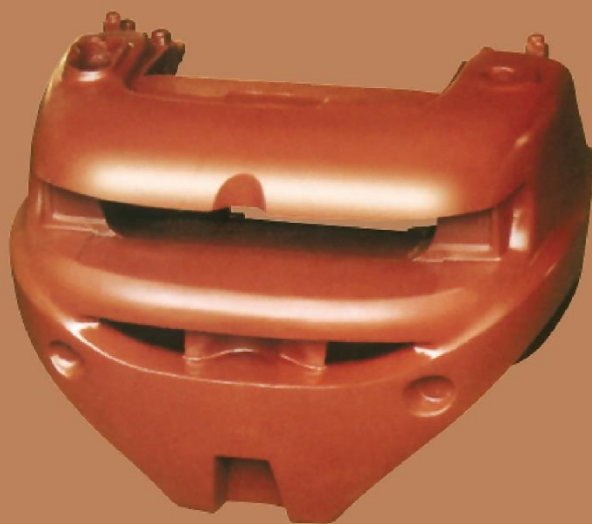
通过ISO9001:2015质量管理体系认证

通过ISO14001:2015环境管理体系认证

领先科技/铸造非凡/专业精神/专业水平/出口型企业



ZDS
ZHONGDESHUN
COMMERCIAL CASTINGS & COUNTERWEIGHTS



福建中德顺机械集团

Fujian ZhongDeShun Machine Group

地址: 福建省晋江市安海北环工业区

Add: Anhai Beihuan Industrial Zone, Anhai, Jinjiang, Fujian, China, 362261

电话(Tel): +86-595-8570 5378 传真(Fax): +86-595-8570 6378

http://www.zdszz.cn E-mail: info@zdszz.cn 邮编(P.C): 362261

中德顺集团简介

福建中德顺机械集团(简称ZDS),是一家以机械、铸件制造、配件生产、机械钢结构件产品、进出口贸易等多种产业链经营发展的集团股份公司。公司于2001年元月位于福建四大名镇之一的晋江市安海镇成立。

集团公司占地300多亩,厂房12万平方米,总投资约三亿九千万人民币,员工500多人,专业技术人员团队60余人,是一家拥有年产12万吨铸件的大型出口铸造企业。福建中德顺机械集团目前拥有福建中德顺新材料股份有限公司、三明市超越科技发展有限公司、晋江市中德顺钢结构件工程发展有限公司、福建省中德顺贸易有限责任公司、三明市菲得美机械有限公司等五家全资子公司。

集团公司重视企业发展,并不断地提高产品的质量,公司于2015年获得ISO9001:2015质量体系证书和ISO14001:2015环境管理体系认证证书。公司自成立以来,获得以下荣誉:“中德顺”商标被认定为福建省著名商标及泉州市知名商标,被福建省工商管理局、泉州市人民政府、晋江市人民政府授予:“守合同 重信用”单位等荣誉称号。



福建名牌产品
FUJIAN FAMOUS BRAND PRODUCTS



AAA级信用企业
AAA-GRADE CREDITABLE ENTERPRISE



优质铸件金奖
BEST-IN-CLASS CASTING



中国铸造协会副理事长单位
CFA VICE-DIRECTOR UNIT



中国质量诚信AAAA级企业
CHINESE AAAA-GRADE QUALITY TRUSTWORTHY ENTERPRISE

经过十几年来中德顺全体员工的不断创新与发展,晋江市中德顺集团有限公司取得了巨大的进步和飞跃。我们的自动化造型线系统节约了生产成本,提高效率并缩短制造周期,不仅为双方制造了更多的经济效益,也使得国际上一些知名企业纷纷主动与我们公司合作,实现了我们共同的双赢!

每一份荣誉都是一种认可,每前进一步都凝聚着中德顺人的汗水、责任和智慧,收获这一份份的荣誉和进步,中德顺人唯有秉持好品质、提高客户的满意度为己任,才能创造更辉煌的未来。

ZHONGDESHUN GROUP INTRODUCTION

Fujian ZhongDeshun Machine Group (hereafter called ZDS), is a joint-stock group company, which integrate various industrial chains including machinery, casting parts manufacturing, accessories production, machinery and steel structure products, import and export trade...etc. ZDS was founded in 2001, located in Anhai town, Jinjiang, Fujian, China.

Covering an land area of 200,000 m², workshops area of 120,000 m², with a total investment of about RMB390,000,000, more than 500 employees, including as a professional technical team of 60 technicians. ZDS is a large export enterprise with an annual output capacity of 120,000 tons of casting parts. ZDS now has five wholly-owned subsidiaries, which are

- ▶ Fujian Zhongdeshun New Materials Co., Ltd.
- ▶ Sanming Beyond Technology Development Co., Ltd.
- ▶ Jinjiang Zhongdeshun Steel Structure E&D co., Ltd.
- ▶ Fujian ZhongdeShun Trading Co., Ltd.
- ▶ Sanming Feidemei Machinery Co., Ltd.,

ZDS pays more attention to the development of the enterprises, and constantly improve the quality of products. ZDS obtained ISO9001:2015 and ISO14001:2015 in 2015. Since the establishment of the company, ZDS has obtained the following honors: “ZDS” trademark was granted as Fujian famous trademark and Quanzhou well-known trademark; ZDS was awarded with the honourable title of Creditable Company by Fujian Industrial and Commercial Administration, Quanzhou Municipal Government and Jinjiang Municipal Government.

After more than ten years' continuous innovation and development, ZDS has make great progress and leaps. Our automated molding lines reduce production cost, increase efficiency and reduce lead-time, which can not only make more economic efficiency for both parties, but also have many well-known international enterprises take the initiative to cooperate with us and realize mutual benefits.

Every honor is a recognition, every step forward is the cohesion of sweater, responsibility and wisdom of ZDS staff. With the honors and progress, ZDS staff should continuously stick to the principles of keeping good quality , improving customers' satisfaction in order to create a more brilliant future.

(一)、工艺及设备特色

公司采用“V”法真空造型技术，主要生产灰铁铸件以及球墨铸件，重量单件从小到几公斤大到重达20多吨，公司主要生产叉车、工程机械、建筑机械及港口机械的平衡重、机床铸件和焊接平衡重等产品。我们引进最先进的铸造技术，制造出符合客户要求的高品质产品以满足客户的要求。

备注：集团应用源于日本长野工业试验所和秋田株式会社于1971年发明的真空铸造新技术及V法新工艺、新设备。作为第3代造型方法即物理硬化方法，技术比粘土砂造型和树脂砂造型均更加现代化。“V”法铸造因其固体废弃物最少，符合节能减排的要求。

(1) Technology and equipment characteristics

ZDS adopts vacuum casting technology, mainly produce gray iron castings and ductile iron castings, ZDS can produce the products which weight from a few kilograms to more than 20 tons of each. The products include counter weights of forklifts, engineering, construction machinery and port equipments, machine tool casting and welding counter weights etc.. We have introduced the most advanced casting technology to manufacture superior-quality products to meet customers' requirements.

Note: ZDS adopts new vacuum casting technology which was invented by Japanese Nagano Industry Research Institute and Akita Corporation in 1971, they are latest vacuum techniques and new equipments. As the third generation of molding, the physical harden is more advanced than clay sand molding and resin sand molding. Vacuum casting complies with the requirement of energy-saving and emission reduction because of its smallest solid waste volume.

(二)、主要产品

集团拥有自主出口权，主要生产范围涉及不锈钢铸件，有色金属铸件，球墨铸铁铸件，碳素钢铸件，普通灰口铸铁铸件，铸件单重从几公斤至25吨均可生产。产品有叉车配件、起重机配件、装载机配件、工程机械配件、倾卸装置、机床铸件和焊接平衡重等多种品种。

(2) Main products

ZDS has the independent import&export license, its main production range concerns stainless steel castings, non-ferrous castings, ductile iron castings, carbon steel castings, grey cast iron castings. ZDS can produce castings which weight from a few kilograms to 25 tons of each. Our Products include forklift accessories, crane accessories, loader parts, engineering machinery parts, tilting device, machine tool casting and welding counterweights...etc.

出口型企业

地址:福建晋江市安海北环工业区

ADD:Anhai Beihuan Industrial Zone, Anhai, Jinjiang, Fujian, China, 362261

电话:(Tel):86-595-85705378 传真(Tax):86-595-85706378

http://www.zdszz.cn E-mail: fjzds@vip.winmail.cn 邮编(P.c):362261



(三)、主要服务客户

目前集团公司产品销往欧、美、日等国，为外资企业配套占生产总量的86%，直接出口占生产总量的70%。其中主要客户包括：

- ▶ 卡哥特科
- ▶ 科尼
- ▶ 日本音头株式会社
- ▶ 日立建机
- ▶ 小松
- ▶ 韩国现代
- ▶ 林德叉车
- ▶ 洋马建机
- ▶ 振华重工
- ▶ 特雷克斯
- ▶ 海斯特
- ▶ 马尼托瓦克
- ▶ 厦工、柳工、三一重工等公司

(3) Main customers

ZDS products are sold to Europe, America, Japan and other countries, products supplied for foreign enterprises account for 86% of total production, direct exports accounted for 70% of total production. Our partners including,

- ▶ CARGOTEC
- ▶ KONECRANES
- ▶ ONDO METAL
- ▶ HITACHI
- ▶ KOMATSU
- ▶ HYUNDAI
- ▶ LINDE
- ▶ YANMAR
- ▶ ZPMC
- ▶ TEREX
- ▶ HYSTER
- ▶ MANITOWOC
- ▶ XGMA, LIUGONG, SANY etc



(四)、产品品质及认证情况

集团于2003年获得ISO9001:2000质量体系证书，2008年获得ISO14001:2004质量体系证书。2012年被中国铸造协会评为千家重点骨干企业、中国铸造行业企业信用等级AA级企业。为2012年度福建省质量诚信体系建设单位，全国质量诚信AAA级品牌企业，福建省著名商标、泉州市知名商标、福建省名牌产品，福建省2009~2010年度和2011年~2012年度守合同重信用企业。

2013年4月7日被中国铸造协会评选为企业信用评价AAA级信用企业，全国只有十家，同年4月于第六届中国铸造零部件展览会上公司产品被中国铸造协会评为优质铸件金奖，参展铸件并被中国铸造协会永久收藏在沈阳中国铸造博物馆中。另外，被林德-厦门叉车有限公司评为“A”级供应商。

经过几年来不断地在生产造型线上的改进，集团能按不同国家标准和用户的要求进行生产和检验，产品质量稳定。目前，我集团拥有铸件行业技术开发中心，在福建省铸造行业是铸件出口量最大、出口国家最广、铸件品质较好、技术含量较高的企业，企业的市场占有率和经济效益不断提高。

(4) The product quality and certification

ZDS obtained ISO9001:2000 quality system certification in 2003, and obtained ISO14001:2000 quality system certificate in 2004. ZDS was awarded as 1000 key backbone enterprises and AAA-Grade Creditable Enterprise by China Foundry Industry Association. ZDS obtained the title of Quality Trustworthy System Construction Unit of Fujian Province in 2012; Chinese AAA-Grade Quality Trustworthy Enterprise, Fujian famous trademark; Quanzhou well-known trademark, Fujian brand-name product, and Fujian creditable enterprise of the year 2009 to 2010 and the year 2011 to 2012.

On April 7th.,2013 ZDS was awarded as AAA-Grade Creditable Enterprise by China Foundry Association. Only 10 enterprises in China have such honorable title. ZDS product was awarded with gold medal for superior quality on the 6th China Casting Parts Expo. in April, 2013 and was collected permanently in China Casting Museum in Shenyang. In addition, ZDS was rated as A-Grade supplier by Linde (China) forklift truck Co., Ltd.

After a few years of continuous improvement of molding lines, ZDS can produce the castings and do the inspection according to various countries' standard and various customers' requirements. The products' quality is stable. At present, ZDS has the technology development center of casting industry. So far, ZDS is an Group Enterprise which has the largest export volume, exports to the most numerous foreign countries, has superior quality products, and own high technology content in Fujian Casting Industry. ZDS' market share and economic efficiency are keeping increasing.

出口型企业

地址:福建晋江市安海北环工业区

ADD:Anhai Beihuan Industrial Zone, Anhai, Jinjiang, Fujian, China, 362261

电话(Tel):86-595-85705378 传真(Tax):86-595-85706378

http://www.zdszz.cn E-mail: fjzds@vip.winmail.cn 邮编(P.O):362261



(五)、企业研发与产业优化

集团公司与中国科学院金属研究所合作挂牌成立“中国科学院金属研究所国家技术转移中心---福建分中心”。中国科学院金属研究所委派两名科研人员不定期对福建中德顺机械铸造有限公司及分中心的工程技术问题进行分析和研究并提出合理可行的技术解决方案，具体合作内容：

- 1、机床床身铸件及纺织机械配件关键铸件工艺开发。
- 2、利用计算机模拟技术，优化和改进现有铸造工艺。
- 3、对机床床身铸件进行内应力研究分析，制定合理工艺，降低或消除床身铸件应力，提高机床精度。
- 4、优化和改进机床床身，用铸铁材料成份提高组织稳定性与性能均匀性。
- 5、设计铸造和热处理工艺，改善机床导轨硬度均匀性，提高耐磨性。
- 6、中国科学院金属研究所的研发项目优先在中德顺机械铸造有限公司及分中心进行产业化。

(5) Enterprise R&D and Industrial optimization

ZDS and Chinese Academy of Sciences Institute of Metal Research (Hereafter called IMR) cooperated and set up "IMR: National Technology Transfer Center-Fujian Branch" (Hereafter called TTC) in ZDS. IMR aperiodically send two researchers to ZDS to make the analysis, research, and give out the reasonable and feasible technical solutions for the engineering and technical issues of ZDS & TTC. The details are as follows:

- 1、Processing technology developing-the castings of machine tools basis and the key casting parts of textile machines.
- 2、Optimizing and improving current technology by computer simulation technology.
- 3、Making inner stress analysis for the machine tool basis castings and make reasonable process to reduce or release inner stress and improve the accuracy of machine tools.
- 4、Optimizing and improving cast iron materials components of machine tools basis, to enhance structure stability and performance uniformity.
- 5、Making the casting and heat treatment processing to improve the hardness uniformity and abrasion resistance of machine tool guide ways.
- 6、ZDS and TTC have the industrialization priority for the IMR projects.

企业荣誉证书

ZHONGDESHUN HONOR CERTIFICATE



出口型企业

地址:福建晋江市安海北环工业区

ADD:Anhai Beihuan Industrial Zone, Anhai, Jinjiang, Fujian, China, 362261

电话:(Tel):86-595-85705378 传真(Tax):86-595-85706378

http://www.zdszz.cn E-mail: fjzds@vip.winmail.cn 邮编(P.C):362261

企业生产设备

ZHONGDESHUN PRODUCTION EQUIPMENT



自动化造型线
Automatic Molding Machine



实验室/Lab



侧面铣床/Profile milling machine



3坐标/3D Measurement



带专用工装的摇臂钻床/Drilling Machine



数控镗床/NC Boring Machine



智能手持式激光3D扫描仪
Smart handhele laser 3D scanner



浇注/Pouring



龙门刨/Milling Machine



油漆线/The paint line



布氏硬度计
Brinell Hardness
Tester



拉力机
Tensile Machine

出口型企业

地址:福建晋江市安海北环工业区

ADD:Anhai Beihuan Industrial Zone, Anhai, Jinjiang, Fujian, China, 362261

电话:(Tel):86-595-85705378 传真(Tax):86-595-85706378

http://www.zdszz.cn E-mail: fjzds@vip.winmail.cn 邮编(Pc):362261

叉车配件系列

PROKLIFT FITTINGS SERIES



ZDS
ZHONGDESHUN
福建中德顺集团
FUJIAN ZHONG DE SHUN GROUP



Forklift Counterweight
Size: 1203x1199x808 mm
Weight: 2150kg



Counterweight Upper Steel Axle
Size: 490x450x170 mm
Weight: 365.5kg



Forklift Counterweight
Size: 1175x620x51 mm
Weight: 1095kg



Forklift Counterweight
Size: 1150x945x782 mm
Weight: 2006kg



Forklift Counterweight
Size: 3380x2277x670 mm
Weight: 13700kg



Forklift Counterweight
Size: 1150x945x782 mm
Weight: 2000kg



Forklift Counterweight
Size: 2460x1826x909 mm
Weight: 9997kg



Crane Counterweight
Size: 2940x1740x652 mm
Weight: 9519kg

出口型企业

地址:福建晋江市安海北环工业区

ADD:Anhai Beihuan Industrial Zone, Anhai, Jinjiang, Fujian, China, 362261

电话:(Tel):86-595-85705378 传真(Tax):86-595-85706378

http://www.zdszz.cn E-mail: fjzds@vip.winmail.cn 邮编(P.c):362261

港机配件系列

PORT MACHINERY FITTINGS SERIES



Forklift Counterweight
Size:3100x1650x1200 mm
Weight: 7120kg



Forklift Counterweight
Size:2200x1405x450 mm
Weight: 4286kg



Crane Counterweight
Size:2200x1350x1150 mm
Weight: 6450kg



Crane Counterweight
Size:2400x1000x330 mm
Weight: 4000kg



Crane Counterweight
Size:3240x2003x765 mm
Weight: 12700kg



Crane Counterweight
Size:1575x1145x250 mm
Weight:1150kg



Crane Counterweight
Size:3300x1856x750 mm
Weight: 10763kg

出口型企业

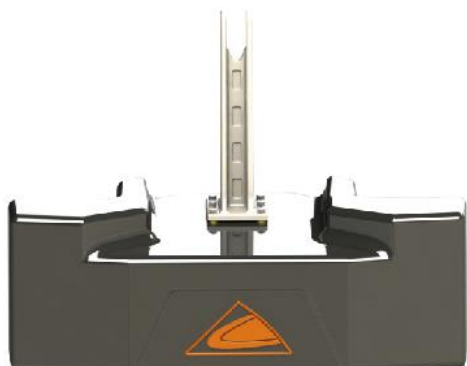
地址:福建晋江市安海北环工业区

ADD:Anhai Beihuan Industrial Zone, Anhai, Jinjiang, Fujian, China, 362261

电话:(Tel):86-595-85705378 传真(Tax):86-595-85706378

http://www.zdszz.cn E-mail: fjzds@vip.winmail.cn 邮编(P.c):362261

农用机械配件系列
AGRICULTURAL FITTING SERIES



Agricultural Counterweight
Size:1340x690x470 mm
Weight:1800kg



Agricultural Counterweight
Size:800x600x460 mm
Weight:860kg



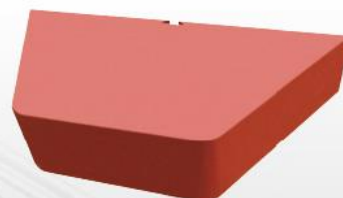
Agricultural Counterweight
Size:810x670x430 mm
Weight:1250kg



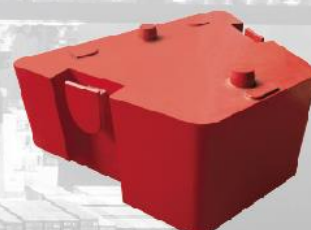
Crane Counterweight
Size: 3240x2003x765mm
Weight: 12800kg



Counterweight Rear
Size:1447x845x273.5 mm
Weight: 1457kg



Forklift Counterweight
Size:1230x615x220 mm
Weight: 935kg



Crane Counterweight
Size:1300x950x545 mm
Weight: 3453.7kg

出口型企业

地址:福建晋江市安海北环工业区
ADD:Anhai Beihuan Industrial Zone, Anhai, Jinjiang, Fujian, China, 362261
电话:(Tel):86-595-85705378 传真(Tax):86-595-85706378
<http://www.zdszz.cn> E-mail: fjzds@vip.winmail.cn 邮编(Pc):362261

焊接配重系列

WDLING FITTINGS SERIES

铸钢、球墨系列

CASTING、DUCTILE SERIES



出口型企业

地址:福建晋江市安海北环工业区

ADD:Anhai Beihuan Industrial Zone, Anhai, Jinjiang, Fujian, China, 362261

电话:(Tel):86-595-85705378 传真(Tax):86-595-85706378

http://www.zdszz.cn E-mail: fjzds@vip.winmail.cn 邮编(Pc):362261

工程机械配件系列
ENGINEERING MACHINERY FITTINGS SERIES



Excavator Counterweight
Size: 2430x1210x925 mm
Weight: 4400kg



Excavator Counterweight
Size: 2430x1210x925 mm
Weight: 4510kg



Excavator Counterweight
Size: 1316x715.5x495 mm
Weight: 622kg



Excavator Counterweight
Size: 2980x1272x500 mm
Weight: 6100kg



Excavator Counterweight
Size: 1402x457x437 mm
Weight: 460kg

出口型企业

地址:福建晋江市安海北环工业区

ADD:Anhai Beihuan Industrial Zone, Anhai, Jinjiang, Fujian, China, 362261

电话:(Tel):86-595-85705378 传真(Tax):86-595-85706378

http://www.zdsz.cn E-mail: fjzds@vip.winmail.cn 邮编(P.c):362261

铸钢系列

CASTING SERIES



Ex 200-1



Hr 26



Special

驱动齿轮
SPROCKET RIM



EC290



CAT320

引导轮
IDLER



EX200-1



D4H

出口型企业

地址:福建晋江市安海北环工业区

ADD:Anhai-Beihuan Industrial Zone, Anhai, Jinjiang, Fujian, China, 362261

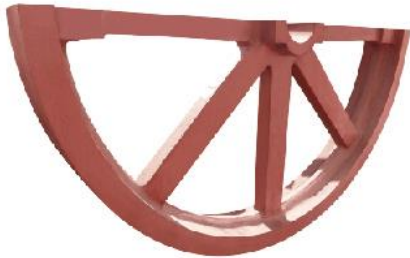
电话:(Tel):86-595-85705378 传真(Tax):86-595-85706378

http://www.zdszz.cn E-mail: fjdzs@vip.winmail.cn 邮编(P.c):362261

石材机械铸件系列
STONE MACHINERY CASTING SERIES



4.3T



4.5T



6.5T



3.5T

出口型企业

地址:福建晋江市安海北环工业区
ADD:Anhai Beihuan Industrial Zone, Anhai, Jinjiang, Fujian, China, 362261
电话:(Tel):86-595-85705378 传真(Tax):86-595-85706378
http://www.zdszz.cn E-mail: fjzds@vip.winmail.cn 邮编(Pc):362261



大鼎/Cauldron



大盘/Wheel



大盘齿轮0.34-0.38T/Gear 0.34-0.38T



大盘0.42T-0.49T
Wheel 0.42-0.49T



机脚0.09-0.15T
Machine Foot 0.09-0.15T



下圈0.12-0.15T
Base Circle 0.12-0.15T



支撑梁/Support Beam



机脚/Machine Foot

纺织机械铸件系列

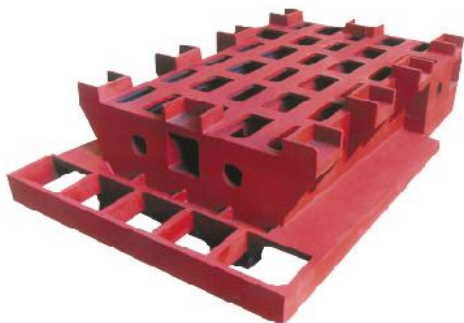
TEXTILE MACHINERY CASTING SERIES

数控机床铸件系列

MUMERICAL CONTROL EQUIPMENT CASTING SERIES



床身/Machine Bed



底座/Basement



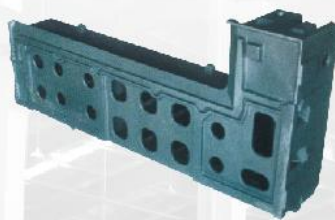
床身8.5T/Machine Bed 8.5T



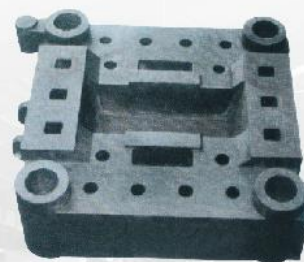
横梁3.4T/Beam 3.4T



底座 1.5-9T/Basement 1.5-9T



端梁7.5T/End Beam 7.5T



中横梁/Middle Beam



门梁/Door Beam

出口型企业

地址:福建晋江市安海北环工业区

ADD:Anhai Beihuan Industrial Zone, Anhai, Jinjiang, Fujian, China, 362261

电话:(Tel):86-595-85705378 传真(Tax):86-595-85706378

http://www.zdszz.cn E-mail: fjzds@vip.winmail.cn 邮编(P.c):362261



ZDS

ZHONGDESHUN

晋江市中德顺钢构件工程发展有限公司
Jinjiang Zhongdeshun Steel Structure E&d Co.,Ltd.
Quality Steel Structure Manufacturing



COMPANY INTRODUCTION

公司简介

晋江市中德顺钢结构件工程发展有限公司成立于2010年，是福建省中德顺机械集团的全资子公司，注册资金人民币500万元，现有员工50人，其中高级工程师1人，工程师2人，专业技术员5人，目前占地面积10000m²，其中生产车间面积8000m²，可年产30000吨钢制焊接构件。中德顺集团正在申请一个200亩的中德顺工业园用地，其中100亩规划用于晋江市中德顺钢结构件工程发展有限公司。

晋江市中德顺钢结构件工程发展有限公司专注于钢制焊接构件的开发和制作。

公司目前的主要产品分两大项

1、焊接式平衡重产品--我们的焊接式平衡重适用于密度<6800kg/m³的平衡重，采用优质钢板焊接外壳，内部填充大块废钢并点焊固定，或填充生铁锭用混凝土固定，重心稳定，轮廓完美，涂装质量高，产品能耗和价格较铸造平衡重更低。

2、钢制焊接构件，可承接各种工程机械车架、承载梁等单件最大不超过50吨的钢制焊接构件。特别的，公司正在开发一款具有自主知识产权的集装箱吊具，该产品主结构使用屈服强度高达700MPa的热轧钢板焊接而成，对焊接制作人员的要求高，制作工艺严格。

Jinjiang Zhongdeshun Steel Structure E&D Co.,Ltd. Founded in the year of 2010,as the wholly-owned subsidiary of Fujian Zhongdeshun Machinery Group,registered capital RMB5,000,000,with 50employees,including 1 senior engineer, 2 engineers, 5 professional technicians, and land area about 10000m²,workshop 8000m², can offer max. 30000 tons of steel welding structures annually. Fujian Zhongdeshun Group is making a land of 133,400m² application for Zhongdeshun Industrial Garden and planning about 66,700m² special for Jinjiang Zhongdeshun Steel Structure E&D Co.,Ltd.

Jinjiang Zhongdeshun Steel Structure E&D Co.,Ltd. Concentrates on the development and fabrication of steel structures.

Two main kinds of products are as follows :

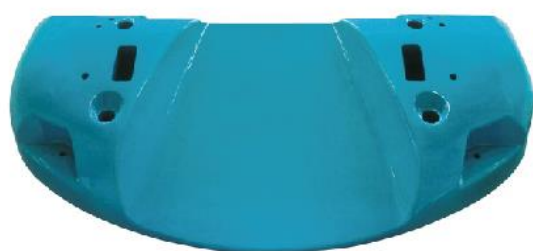
1、Welding Counterweight--suit for the counterweight whose density <6800kg/m³, making the welding shells with reinforcement inside, filling scrap iron plate and welded jointing together, or filling pig iron fixed by concrete. Welding counterweight is with the stable gravity, better profile and iron surface, high-quality coating covering, lower energy consumption and competitive price than casting counterweight.

2、Steel Welding Structures--We can fabricate kinds of chassises, carrier beams and other steel structures which are not more than 50 tons of single workpiece for construction industrial equipments. Especially we are development one type of container spreader with patents, whose steel structure is welded by hot rolling steel plate of 700MPa of yield stress, skilled experience for workers and strictly fabrication technologies are required. Technologies required.



WELDING COUNTERWEIGHTS

焊接式平衡重系列



12.8T



1.673T



0.85T



焊接外壳
Welding Shell



筋板相连
Reinforcement Inside



在震动台用水泥固定填充料
Fixed filling material by concrete
on Vibration Platform



填充料
Filling Material



WELDING STRUCTURES

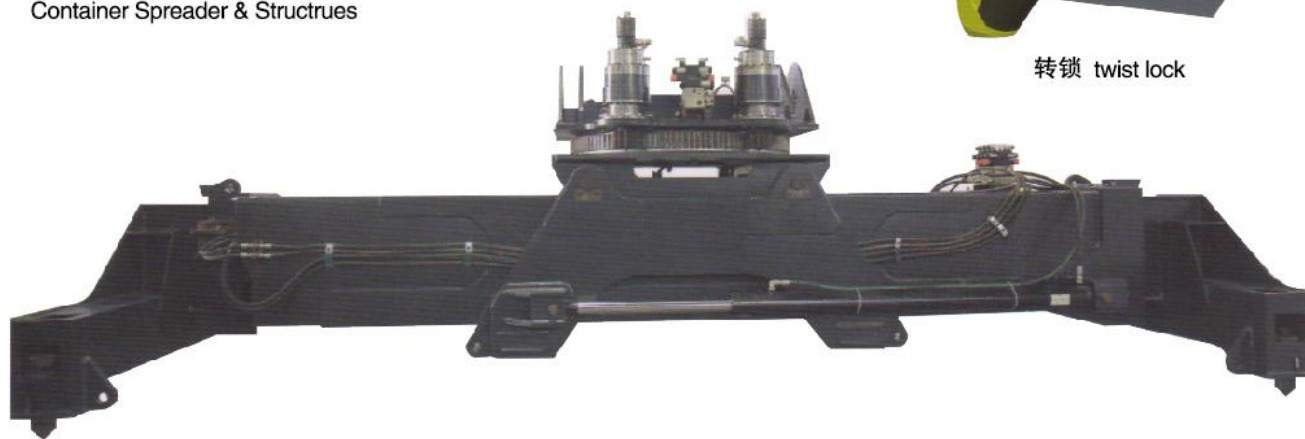
► 焊接式钢结构系列

集装箱吊具及其钢结构

Container Spreader & Structures



转锁 twist lock



特点 Character

- 1) 吊具钢结构由屈服强度达700MPa的高强度钢板焊接而成。
 - 2) 单独运送吊具时，吊具可缩放于ISO20英尺集装箱，运费低。
 - 3) 具有自主知识产权的转锁装置，无需拆卸即可目视发现转锁损坏，提高了安全性，可降低人员伤亡和财产损失的风险。
- 1) Spreader structures made by quality plate of yield stress 700MPa.
 - 2) Spreader can be put into ISO20ft container when in transportation, freight charge is the lower.
 - 3) With special twist lock system (patent application NO.CN201110387080.7), can find the twist lock breaking by visual check, improving the safety, reducing the risk of casualties and property loss.

技术参数 Technical Data

型号	Model		RSS45.0
额定载荷-转锁下	Capacity Load, under twist lock	tons	45
液压驱动伸缩式	Hydraulic Driven Telescopic Type		
工作压力	Working Pressure	bar	130
总重	Total Weight	tons	9.25
侧移距离	Side Shift	mm	± 800
侧倾角度	Side Slope	°	± 3
回转角度	Rotation Range	°	+95~-275 ●
回转速度 (慢)	Slow Rotation Speed	rpm	0.75 ●
回转速度 (快)	Fast Rotation Speed	rpm	1.5 ●
伸缩速度	Telescopic Speed	s	<30
旋锁开闭锁	Lock/Unlock	s	<1
备注：● 标记的值可调。Note: ● marked can be adjustable.			

合作伙伴/Partners





福建中德顺新材料股份有限公司

Fujian Zhongdeshun New Materials Co.,Ltd.

地址:福建晋江安海镇北环路工业区

ADD:Anhai Beihuan Industrial Zone, Anhai, Jinjiang, Fujian, China, 362261

三明市超越科技发展有限公司

Sanming Beyond Technology Development Co.,Ltd.

地址:福建省三明市大田县上京镇铸锻产业园区

ADD:Casting and Forging Industrial Park,Shangjing,Datian,Sanming,Fujian,China.

晋江市中德顺钢结构件工程发展有限公司

Jinjiang Zhongdeshun Steel Structure E&D Co.,Ltd.

地址:福建晋江市安海第二工业区

ADD:NO.2 Industrial Zone, Anhai,Jinjiang,China.

福建省中德顺贸易有限责任公司

Fujian ZhongdeShun Trading Co.,Ltd.

地址:福建省晋江市安海北环工业区

ADD:Beihuan Industrial Zone,Anhai,Jinjiang,China.

三明市菲得美机械有限公司

Sanming Feidemei Machinery Co.,Ltd.

地址:福建省三明市大田县前坪乡湖平村下溪

ADD:Xiayi, Huping Village, Qianping, Datian County, Sanming, Fujian, China.