

### + Versatility

- Marking on all kinds of materials;
- Contour Marking/ Hatching Marking;
- 1D/2D codes (Data Matrix) Marking;
- HD Images or Logo Marking

### + Reliability and robust

- Long-life components( $\geq 100\,000$ h) free from maintenance;
- Laser source power 20W/30W;
- Designed for Industrial environment

### + Touch-screen Operation

- Integrated control system;
- Compact & Portable, marking head only 2kg
- Click to start, easy operation

### + Great value for money

- Laser source from renowned brand;
- High speed & High quality Marking;
- Proven laser marking technology



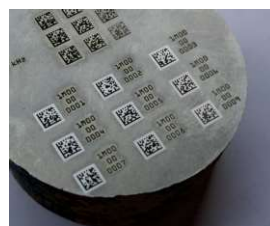
## Marking performance



## Marking test

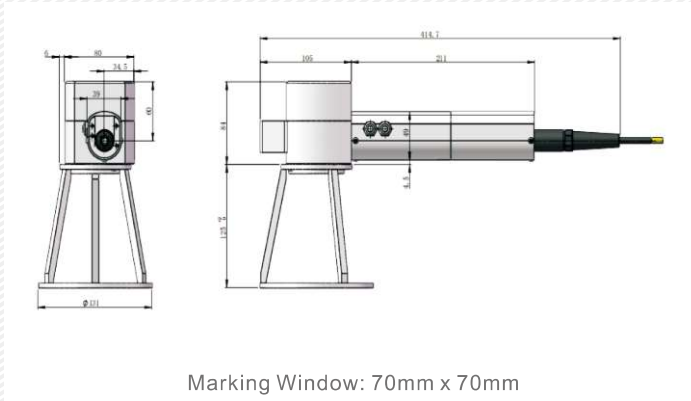


Personalized and comprehensive solutions



## Mechanical Specs

DBL1-B	
Marking window	70mm*70mm/110mm*110mm (please contact HUAPU if any special needs)
Weight	Controller: 10.5kg-Marking head: 2kg
Consumption	750W
Software	HUAPU LASER PC



## Laser Controller Unit



+ Integrated Touch-screen Control system  
Laser controlled by "HUAPU LASER PC" Software

+ USB communication

- Operating method: Pulse frequency, adjustable
- Power consumption: 750W
- Wavelength: 1064nm
- Laser power: 20w/30w (please contact us for any specific request)
- Peak power : 10kw
- Cooling: Air cooling

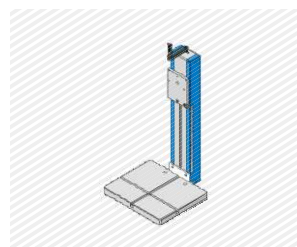
## Options & accessories



Fume exhauster



Laser goggles



Marking Column



Trolley cart