



- ▶ **01 Product Sector**
- ▶ - Logistics / Transportation Sector
- ▶ - Construction Equipment Sector
- ▶ - Agricultural Machinery Sector
- ▶ - Aerospace Equipment Sector (R&D)

ONE
STOP
FULL
SERVICE

01 Logistics / Transportation Sector



Application

- Fork-Lift Truck
- Aerial-Lift Truck
- Aviation Transport
- AGV (Automatic Guided Vehicle)

02 Construction Equipment Sector



Application

- Excavator
- Wheel Loader

03 Agricultural Machinery Sector



Application

- Tractor
- Tractor Accessories

04 Aerospace Equipment Sector (R&D)



Application

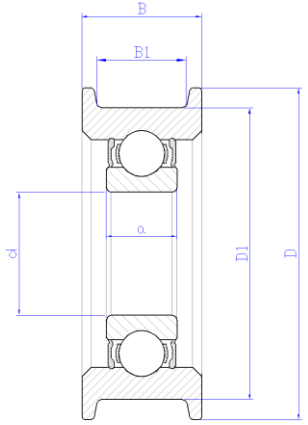
- Fighter Jet (Fixed/Rotary-wing)
- Aircraft (Fixed/Rotary-wing)
- PPU Gas Turbine

Logistics / Transportation Sector

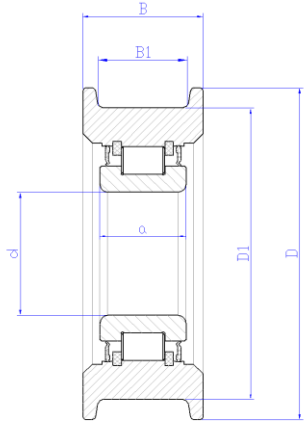
- Fork-Lift Truck (Mast)



CHAIN SHEAVE (PULLEY)



Internal Ball Type



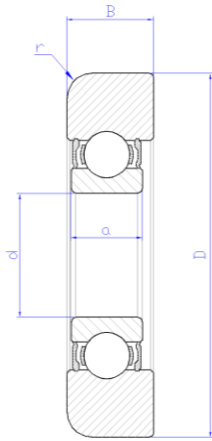
Internal Roller Type



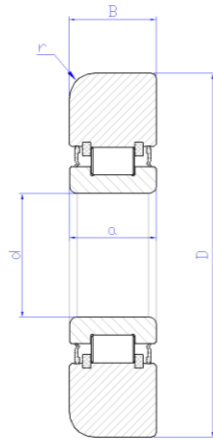
- ▷ **CHAIN SHEAVE BEARING**
- Roller Bearing
- Ball Bearing
- Sheave-Chain Ass'y

HSB PART NO.	DIMENSIONS (mm)						BASIC LOAD RATING (kgf)	
	d	a	D	D1	B	B1	DYNAMIC(Cr)	STATIC(C0r)
CS-25S34-0950W39	25	34	95	80	39.5	32.4	4,200	2,300
CS-25R48-0930W46	25	48.5	93	80	46.5	32.5	9,077	11,209
CS-25R48-1370W46	25	48.5	137	124	46.5	32.5	9,077	11,209
CS-30B19-1200W36	30	19	94	80	36	27	2,746	1,631
CS-30B19-1380W36	30	19	138	124	36	27	2,746	1,631
CS-35R48-1080W46	35	48.5	108	90	46.5	32.5	9,844	12,822
CS-35R48-1380W46	35	48.5	138	120	46.5	32.5	9,844	12,822
CS-35B21-0900W30	35	21	90	80	30	22.5	3,440	2,095
CS-35B21-1300W30	35	21	130	120	30	22.5	3,440	2,095
CS-38R35-1065W47	38.1	35	106.5	90.5	47.5	31.75	10,558	14,435
CS-38R35-1330W52	38.1	35	133	117	52	36.25	10,558	14,435
CS-40B23-1205W33	40	23	120.5	108	33	25	4,202	2,617
CS-40R28-1080W39	40	28	108	95	39	29	8,000	10,104
CS-40R67-1060W64	40	67	106	96	64	56	14,571	22,468
CS-44R49-1560W49	44.45	49.4	156	139	49.6	39.9	21,313	29,677
CS-45R24-1320W38	45	24	132	123	38	31.5	8,498	11,234
CS-45B25-1140W34	45	25	114	105	34	26.4	5,471	3,508
CS-45R25-1280W39	45	25	128	114	39.2	29.6	8,498	11,234
CS-45R42-1270W56	45	42	127	106	52	40	11,216	16,049

MAST ROLLER (GUIDE)



**Internal
Ball Type**



**Internal
Roller Type**

- ▷ **MAST ROLLER BEARING**
- Roller Main
- Roller Load
- Ball & Roller Type

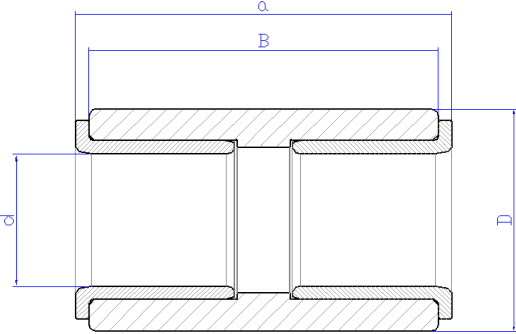
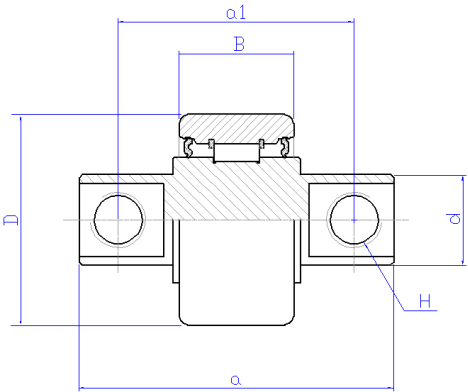


HSB PART NO.	DIMENSIONS (mm)					BASIC LOAD RATING (kgf)	
	d	a	D	B	r	DYNAMIC(Cr)	STATIC(C0r)
MR-30B19-0762W23	30	19	76.25	23.6	6.5	2,746	1,631
MR-35B17-0949W25	35	17	94.9	25.3	7.6	2,618	1,655
MR-35B21-0985W29	35	21	98.5	29	8	3,440	2,095
MR-40B23-1093W31	40	23	109.3	31	6	4,202	2,617
MR-45B25-1275W31	45	25	127.5	31.75	7.92	5,471	3,508
MR-50B25-1172W30	50	25	117.2	30	5	5,907	4,085
MR-50B25-1020W30	50	25.5	102	30	3	3,551	2,469
MR-62R28-1120W36	50	25.5	102	32	4	8,498	11,234
MR-50B27-1320W34	50	27	132	34	7	6,399	4,175
MR-50B40-0900W40	50	40	90	40	2	7,536	9,215
MR-55B29-1518W38	55	29	151.82	38	11.2	8,511	7,350
MR-50R20-0892W27	50	20	89.2	27	2	4,765	6,735
MR-60B22-1267W31	60	22	126.7	31.1	4	4,838	3,482
MR-60B31-1510W36	60	31	151	36	7	8,445	5,682
MR-62R28-1120W36	62	28	112	36	3	9,638	14,059
MR-76R29-1645W38	76.2	29	164.5	38.35	6.35	12,215	17,873
MR-85B34-1710W45	85	34	171	45	12	7,774	6,251
MR-100B34-2050W52	100	34	205	52	10	12,366	9,875

For specification not listed in the above table, please contact HSB



SIDE ROLLER BEARING



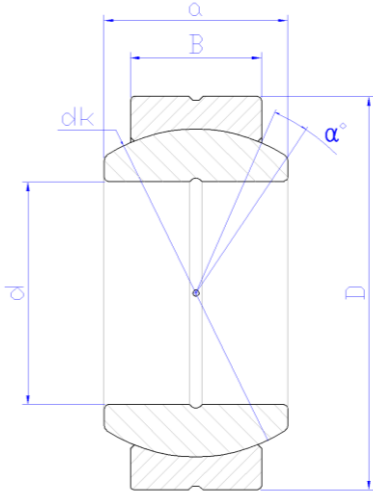
- ▷ **SIDE ROLLER BEARING**
- Needle Roller
- Ball Bearings
- Cylindrical Roller

HSB PART NO.	DIMENSIONS (mm)						BASIC LOAD RATING (kgf)	
	d	a	D	B	a1	H	DYNAMIC(Cr)	STATIC(C0r)
SR-15R80-0420W30	15.5	80	42	30	60	13	3,780	3,990
SR-15R80-0470W30	15.5	80	47	30	60	13	3,780	3,990
SR-20B75-0470W30	20.2	75	47	30	55	M10	1,610	979
SR-25R104-0699W38	25.5	104	69.9	38	78	M16	5,470	10,800
SR-16R80-0470W30	16	80	47	30	60	13	3,780	3,990
SR-19R89-0520W30	19	89	52	30	67	13	4,020	4,390
SR-20R107-0660W42	20	107	66	42	85	15	7,850	11,350
SR-50S142-0840W132	50	142	84	132			-	-
SR-95S143-0120W143	95	143	120	143			-	-

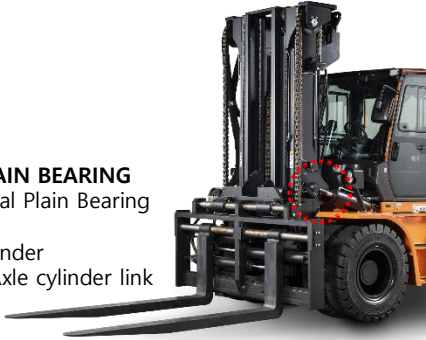
For specification not listed in the above table, please contact HSB



SPHERICAL PLAIN BEARING



▷ **SPHERICAL PLAIN BEARING**
 Radial spherical Plain Bearing
 Application
 - Mast tilt cylinder
 - Steer Rear Axle cylinder link



HSB PART NO.	DIMENSIONS (mm)						BASIC LOAD RATING (kgf)	
	d	a	D	B	dk	α	DYNAMIC(Cr)	STATIC(C0r)
GE-8E	8	8	16	5	13	15°	560	2,750
GE-15ES	15	12	26	9	22	8°	1,630	8,560
GE-17ES-2RS	17	14	30	10	25	10°	2,140	10,800
GE-20ES	20	16	35	12	29	9°	3,050	14,880
GE-20ES-2RS	20	16	35	12	29	9°	3,050	14,880
GE-25ES	25	20	42	16	35.5	7°	4,890	24,470
GE-30ES	30	22	47	18	40.7	6°	6,320	31,610
GE-35ES	35	25	55	20	47	6°	8,050	40,680
GE-45ES	45	32	68	25	60	7°	12,950	64,950
GEZ-31ES	31.75	27.8	50.8	23.8	45.5	6°	8,760	26,510
GEZ-38ES	38.1	33.325	61.913	28.575	54.7	6°	12,740	38,230

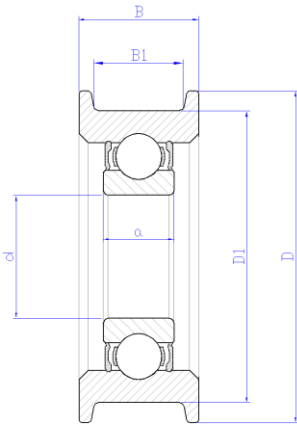
For specification not listed in the above table, please contact HSB



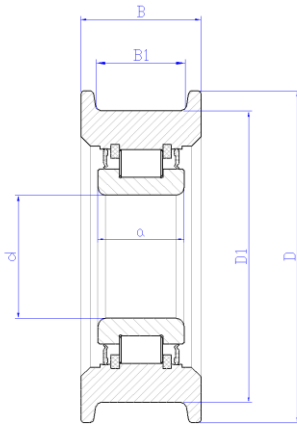
Logistics / Transportation Sector
- Aerial-Lift Truck



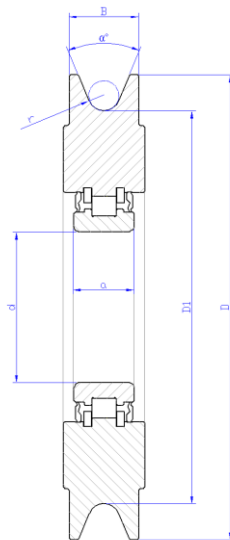
LEAF CHAIN / WIRE BEARING



Internal Ball Type



Internal Roller Type



Wire guide Roller Type



▷ **CHAIN SHEAVE BEARING**
Wire guide Bearing
Leaf chain sheave Bearing

HSB PART NO.	DIMENSIONS (mm)						BASIC LOAD RATING (kgf)	
	d	a	D	D1	B	B1	DYNAMIC(Cr)	STATIC(C0r)
CS-25R37-0920W34 (BL544)	25	37	92	78	34	24	6,870	7,840
CS-25R67-0920W64 (BL544)	25	67	92	78	64	24*2	11,790	15,690
CS-25R49-0980W46 (BL644)	25	49	98	80	46.5	32.5	9,070	11,100
CS-30R37-0870W34 (BL544)	30	37	87	75	34	24	9,077	11,209
CS-38R48-1065W46 (BL834)	38.1	48	106.5	90.5	46	31.7	10,550	14,430
CS-38R52-1065W50 (BL844)	38.1	52	106.5	90.5	50	36.2	10,550	14,430
CS-30R37-0870W33 (BL544)	30	37	87	75	33	23	6,870	7,840
CS-30R48-0870W44 (BL566)	30	48	87	75	44	34	9,070	11,100
CS-40R49-1050W45 (BL644)	40	49	105	95	45	33	14,571	22,468
CS-40R49-1080W45 (BL644)	40	49	108	95	45	33	10,550	14,430
CS-40R62-1080W58 (BL666)	40	62	108	95	58	46	13,710	20,200
CS-40R62-1080W58 (BL666)	40	62	108	95	58	46	14,571	22,468
CS-45R55-1350W52 (BL844)	45	55	135	110	52	37	14,571	22,468
CS-45R55-1460W52 (BL844)	45	55	146	119	52	37	14,570	22,460
CS-45R73-1370W70 (BL866)	45	73	137	110	75	55	14,570	22,460
CS-50R67-1250W65 (BL866)	50	67	125	102	65	54	21,800	40,160
CS-50R92-1670W89 (BL888)	50	92	167	140	89	71	36,500	59,300

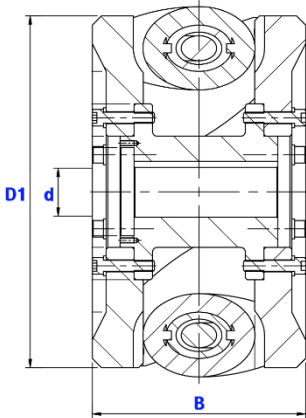
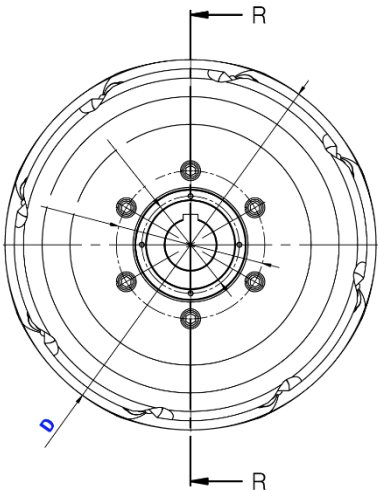
For specification not listed in the above table, please contact HSB



Logistics / Transportation Sector
- AGV (Mecanum Wheel)



MECANUM WHEEL



- ▷ **MECANUM WHEEL ASSEMBLE**
- APPLY LOAD : 3 TON OVER
- ROBOT UNMANNED TECH

HSB PART NO.	DIMENSIONS (mm)				BASIC LOAD RATING (kgf)		
	d	D	D1	B	APP.	DYNAMIC(Cr)	STATIC(C0r)
MW-55R155-0400W230	55	400	380	230	3ton	-	-

For specification not listed in the above table, please contact HSB

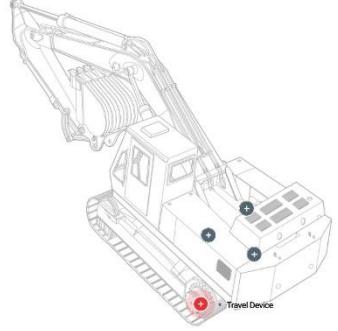
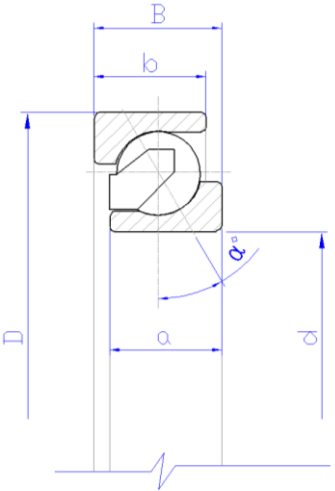


Construction Equipment Sector

- Excavator (Travel motor)
- Wheel Loader (Center pivot)



ANGULAR CONTACT



Excavator

The hydraulic equipment by Motrol Co. Ltd. is designed to control the hydraulic system of an excavator and offers the optimum solutions for drilling operations.

Travel Device



▶ ANGULAR CONTACT BALL BEARINGS Applications

- Travel Motors In The Excavator
- Grinding Spindle
- Pumps & Compressor
- Machine Tools
- Wind Power Generation
- Industrial Robot, etc.,

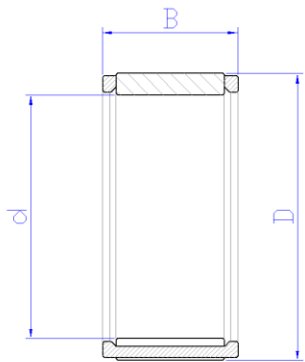


HSB PART NO.	DIMENSIONS (mm)						BASIC LOAD RATING (kgf)	
	d	a	D	b	B	α	DYNAMIC(Cr)	STATIC(C0r)
AG-200B23-2500W24	200	23	250	20.5	24	30°	10,600	14,580
AG-220B18-2760W26	220	18	276	26	26	30°	10,800	17,100
AG-220B20-2760W26	220	20	276	23	26	30°	10,800	15,600
AG-230B24-3000W33	230	24	300	24	33	30°	16,920	23,240
AG-230B27-3100W38	230	27	310	27	38	30°	21,920	29,670
AG-250B27-3300W38	250	27	330	27	38	30°	20,800	29,970
AG-280B40-4000W50	280	40	400	40	50	25°	35,070	54,860
AG-289B24-3550W33	289	24	355	24	33	30°	18,550	28,450
AG-300B28-3700W33	300	28.5	370	28.5	33	25°	19,170	29,770

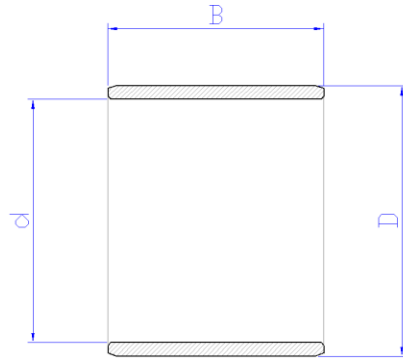
For specification not listed in the above table, please contact HSB



NEEDLE ROLLER / INNER RACE



NEEDLE ROLLER BEARING



INNER RING(RACE)

▷ **NEEDLE ROLLER BEARING
INNER RING (RACE)**
Applications
Travel Motors



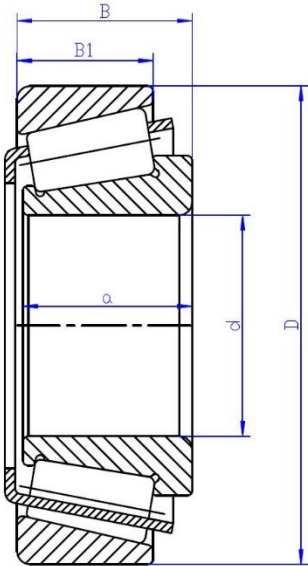
HSB PART NO.	DIMENSIONS (mm)			BASIC LOAD RATING (kgf)	
	d	D	B	DYNAMIC(Cr)	STATIC(C0r)
KT395520	39	55	20.5	5,500	6,250
KT404825	40	48	25	4,150	6,800
KT455325	45	53	25	4,200	7,200
KT456529	45	65	29	8,250	9,450
KT505825	50	58	25	4,800	8,900
KT556320	55	63	20	3,800	6,770

For specification not listed in the above table, please contact HSB

HSB PART NO.	DIMENSIONS (mm)				BASIC LOAD RATING (kgf)	
	d	D	B	α	DYNAMIC(Cr)	STATIC(C0r)
IR303520	30	35	20.5	20°	-	-
IR365025	36.2	50	25.5	37°	-	-
IR354025	35	40	25.5	20°	-	-
IR394529	39.1	45	29.5	20°	-	-
IR343921	34	39	21	20°	-	-

For specification not listed in the above table, please contact HSB

TAPERED ROLLER BEARING



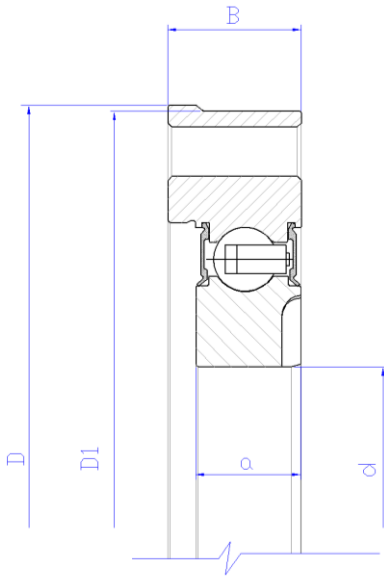
▷ **Tapered Roller Bearings**
 Inside diameter $\varnothing 30 \sim \varnothing 180$
 Inside diameter $\varnothing 900 \sim$
Applications
 Wheel Loader Center Pivot

HSB PART NO.	DIMENSIONS (mm)						BASIC LOAD RATING (KN)	
	d	a	D	B	B1	ref.	DYNAMIC(Cr)	STATIC(C0r)
TR-050R35-1000W36	50	35	100	36	30	T2ED 050		
TR-055R39-1100W39	55	39	110	39	32	T2ED 055	179	232
TR-060R28-1100W29	60	28	110	29.75	24	32212	155	160
TR-065R34-1100W34	65	34	110	34	26.5	33113	175	208
TR-075R37-1250W37	75	37	125	37	29	33115	216	265
TR-075R31-1300W33	75	31	130	33.25	27	32215	197	212
TR-090R45-1500W45	90	45	150	45	35	33118	310	390
TR-100R46-1800W49	100	46	180	49	39	32220	390	440
TR-105R50-1900W53	105	50	190	53	43	32221	443	510
TR-110R53-2000W56	110	53	200	56	46	32222	431	666

For specification not listed in the above table, please contact HSB

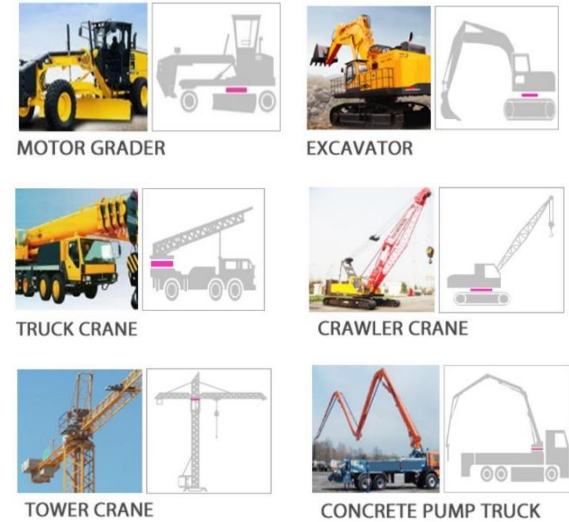


SLEWING BEARING



▷ Slewing bearing Applications

- Fork lift drive system
- Truck Crane system



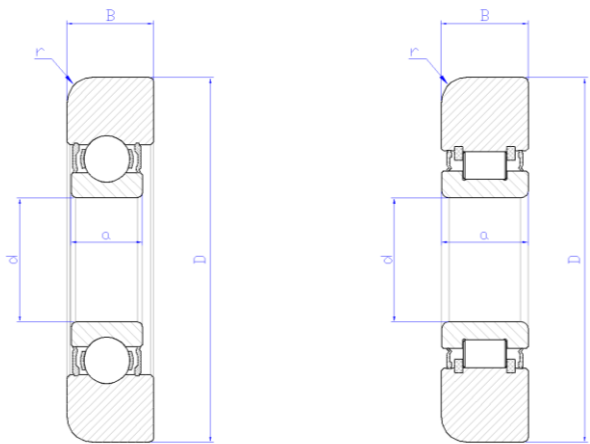
HSB PART NO.	DIMENSIONS (mm)						BASIC LOAD RATING (kgf)	
	d	a	D	D1	B	Gear	DYNAMIC(Cr)	STATIC(C0r)
SB-170B46-3600W58	170	46	360	-	58	EXTERNAL		43,270
SB-180B22-2895W28	180	22	289.5	287	28	-		-
SB-225B41-4150W53	225	41	415	-	53	EXTERNAL		
SB-590B61-8000W56	590	61	800	-	56	INTERNAL		140,000
SB-600B40-8000W45	600	40	800	-	45	-		139,000
SB-616B65-8110W65	616	65	8110	-	65	INTERNAL		180,000
SB-640B68-9000W82	640	68	900	-	82.5	INTERNAL		221,000
SB-963B70-1195W74	963	70	1195	-	74	INTERNAL		340,000
SB-1083B94-1327W89	1083	94	1327	-	89	INTERNAL		443,000

For specification not listed in the above table, please contact HSB

Agricultural Machinery Sector

-Tractor / Accessories





- ▷ Agricultural Machinery Bearing
- Round bore bearing
- Square bore bearing
- With stamping
- Four point contact seeder bearing
- Light torque agricultural bearing



- ▷ Deep Groove Ball Bearings

HSB PART NO.	DIMENSIONS (mm)						BASIC LOAD RATING (kgf)	
	d	a	D	D1	B	Gear	DYNAMIC(Cr)	STATIC(C0r)
AM-19B19-0530W18	19.2	19.4	53.086	-	19.4	-		
AM-49B30-0900W30	49.225	30.175	90	-	30.175	-		-
AM-26RE38-1210RE35	26*26	38.18	121	-	35	-		
AM-32B36-0857W36	32	30.175	85.75	-	36.512	-		

For specification not listed in the above table, please contact HSB



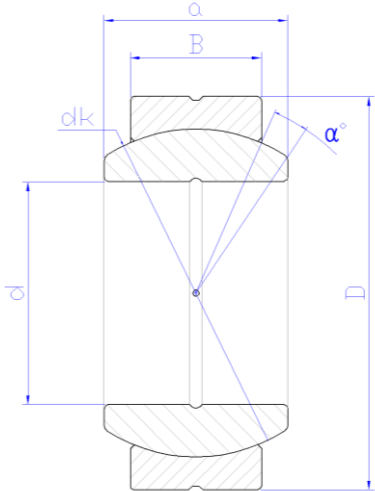
Agricultural Machinery Sector

-Tractor / Accessories

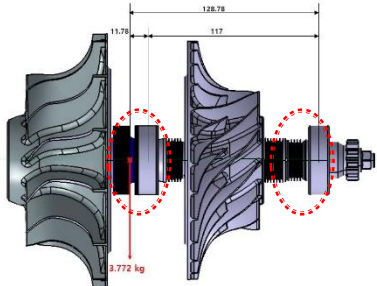


SPHERICAL PLAIN BEARING

Fighter Jet (fixed wing)



▷ **SPHERICAL PLAIN BEARING**
Radial spherical Plain Bearing
Application
- Fighter Jet (fixed wing)



▷ **BALL / ROLLER BEARING**
Application
- Gas Turbine Engine



HSB PART NO.	DIMENSIONS (mm)					BASIC LOAD RATING (kgf)		
	d	a	D	B	dk	α	DYNAMIC(Cr)	STATIC(C0r)
03-582-06 -6	9.525	10.31	20.638	7.92		12.93°		
AS-6204	20	14	47	14				
AS-204	20	14	47	14				

For specification not listed in the above table, please contact HSB



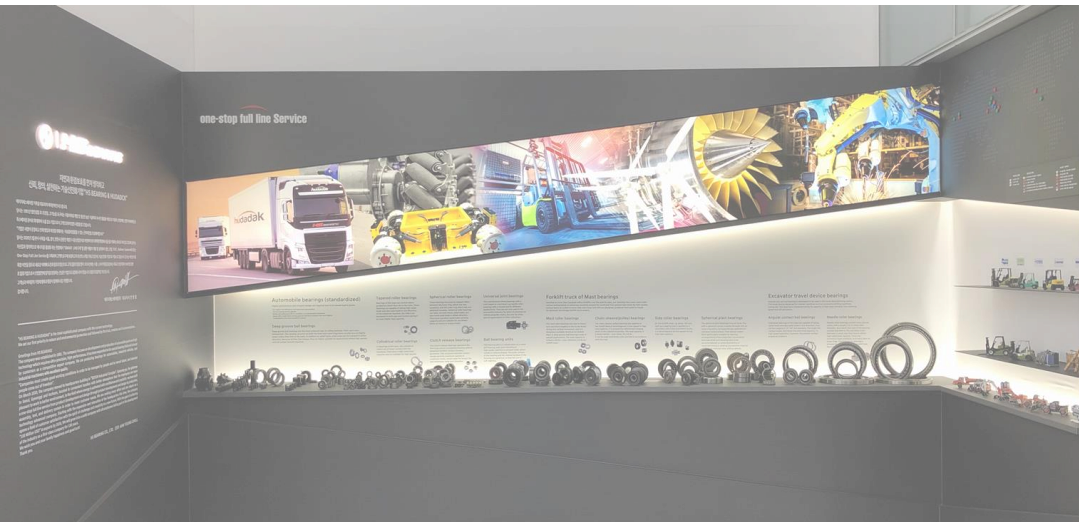
Thank you.

HS Bearing Co.,Ltd. 81, Seounsandan-ro 2-gil, Gyeyang-gu, Incheon, South Korea #21072

T : +82 32 547 8181 F : +82 32 548 4194

hsbrg@hsbrg.com | hsbearing@hsbearing.com

<http://www.hsbearing.com>



ONE COMPANY FOR TRUST
SMART THINKING & PRACTICING
FORWARD STEP BY INNOVATION
SATISFACTION FOR CUSTOMER

