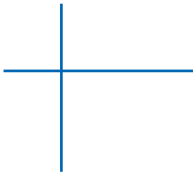


Hinkley Point C - Helping Britain Achieve Net Zero



Dextra



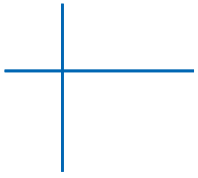
About Dextra

Established in 1983 by French expatriate entrepreneurs, Dextra Group is now a world leading manufacturer of engineered steel and fibre-reinforced polymer construction products.

- Dextra Group has developed through a long history, during which it encouraged those with an entrepreneurial spirit and constantly strived towards innovation and growth, leading to diversification.
- Our two main activities are manufacturing and trading of engineered products for the construction and industrial sectors.
- From day one, we have self-managed our growth to remain a private equity group. Dextra Group currently employs over 1,000 people worldwide, manufactures in three locations and operates in all continents through a network of direct subsidiaries and long-term partners.
- ISO 9001 certified in Thailand, China and India, Dextra Group has always put quality first. Our current quality management systems are meeting the highest certification standards existing worldwide, thanks to our dedicated team of professionals, regularly audited by independent and respected third parties.
- We have been involved, over the years, in more than 20,000 major construction and industrial projects worldwide, giving us a unique expertise.
- In everything we do, we aim to put quality and customer satisfaction first, using our years of hands on experience to find solutions and deliver results.
- When in-depth know-how and quality assurance are a must, Dextra Group is your solution.

reliable
connections

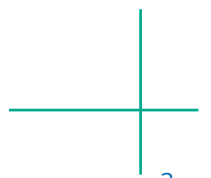




Group Directors



Dextra



Our Manufacturing Facilities

Dextra's main factory in Thailand is strategically located near Bangkok's international airport and the expressway leading to the deep-sea port on Thailand's eastern coast. It extends close to 20,000 sq.m. and employs approximately 400 people.

In this factory, Dextra manufactures rebar couplers, rebar-end preparation equipment, as well as large diameter anchoring bar systems.

Dextra's factory in China, based in Guangzhou, was opened in 2012. This factory specializes in the manufacturing of innovative fibre composite (FRP/GFRP/CFRP) solutions for the construction industry.

Dextra also owns a new production facility in Pune, India, which serves both the domestic and export markets.

Quality Management



TH020984
CN043528



TH015960
CN034746
IND.20.6089/QM/U



FR071147-2



QSC-706



ISO/IEC 17025:2005 Accredited Testing Laboratory



Main Product Certifications



**Factory in Bangkok,
Thailand**



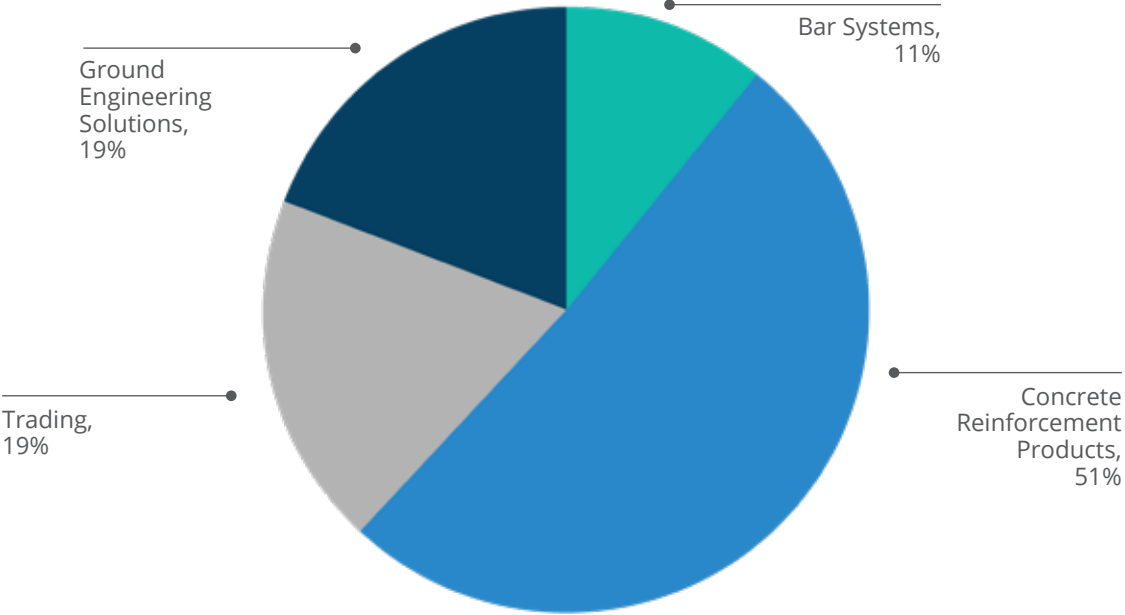
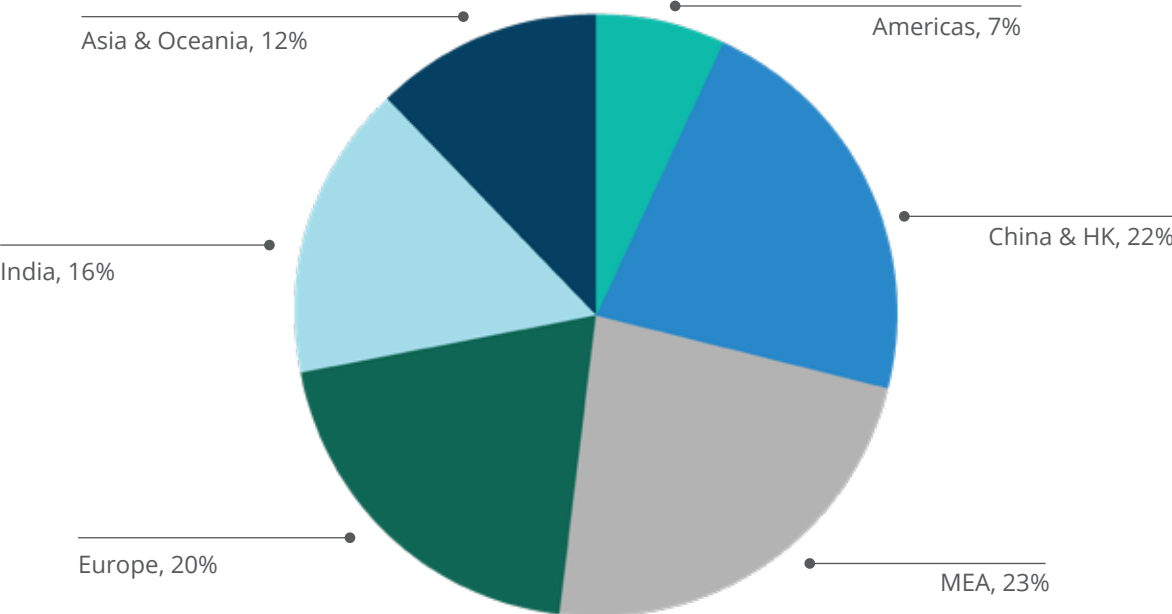
**Factory in Pune,
India**



**Factory in Guangzhou,
China**

Our Activities in 2024

Over US\$ 137 million in revenues



Our ESG Policy

ENVIRONMENTAL

60,000 Tons

CO₂ emissions saved by Dextra couplers in 2023

- Environmental protection
- Sustainable resource use
- Waste reduction
- Continual improvement



SOCIAL

88%

Employee engagement rate score achieved in 2023

- Respect of human rights
- Working conditions
- Community health & safety
- Responsible supply chain

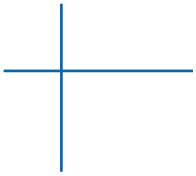


GOVERNANCE

- Legal & regulatory compliance
- Code of conducts & ethics
- Risk management
- Stakeholder engagement



We are fully committed to uphold our ESG principles, which encompass environmental stewardship, social policy initiatives, and sound governance practices to ensure responsible and sustainable business operations.



Concrete Reinforcement Products

Dextra is a leading provider of rebar splicing solutions, which are used to connect reinforcement bars in concrete structures. Those systems take construction sites to a new level of productivity, safety and performance.

Dextra solutions are used everyday in high-rise buildings and major civil concrete construction worldwide, and have been accredited by independent regulatory bodies in most territories.

To complement its wide product range, Dextra manufactures, supplies and maintains its own site equipment to process reinforcing bar ends. This allows Dextra to master every parameter of splice's performance: from the manufactured coupler to the site installation.

More than 500 bar end preparation equipment sets are currently operated by Dextra or our partners and serve major construction sites around the world, with full support from our global aftersales service teams.

Bar end preparation equipment



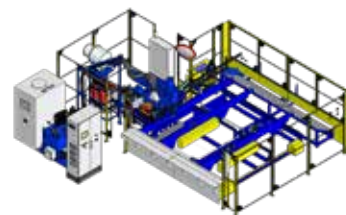
Bartec/Fortec equipment set



Rolltec equipment



Griptec equipment



Headed bar PC equipment

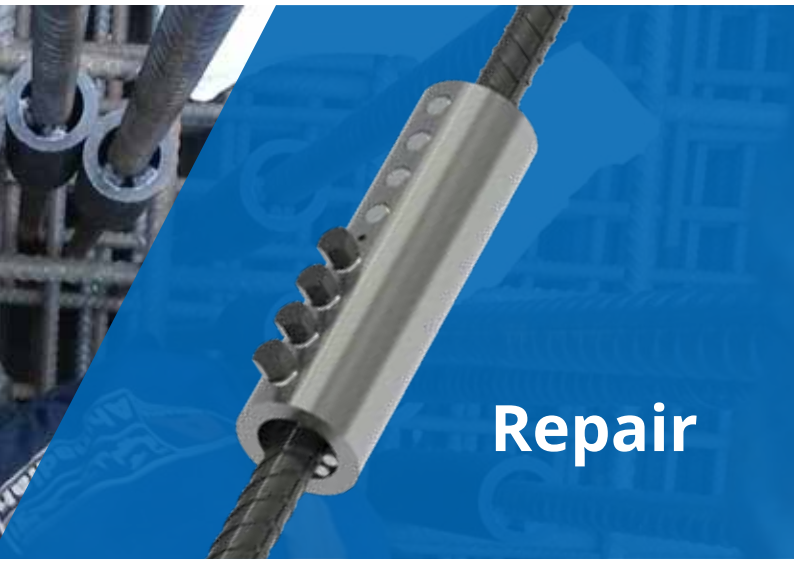




Cast in situ



Precast



Repair



FRP bars

Jizan Flood Mitigation Channel, Saudi Arabia

The Jizan Flood Mitigation Channel, an infrastructure endeavor within Jizan Economic City, Saudi Arabia, safeguards the city against potential flood risks stemming from frequent coastal downpours. Given its exposure to seawater and environmental contaminants, corrosion-resistant materials are imperative. Dextra ASTEC glass fibre reinforced polymer (GFRP) rebars is the ideal solution, offering nearly 2 million meters of GFRP rebar for the project.





Brasilia Stadium, Brazil

The stadium used for the 2014 FIFA World Cup in Brazil utilized Rolltec rebar couplers and headed bars to facilitate the connection of prefabricated rebar cages and columns, as well as to replace hook bars in congested areas. These were supported by a Rolltec machine on-site.

Burj Khalifa, United Arab Emirates

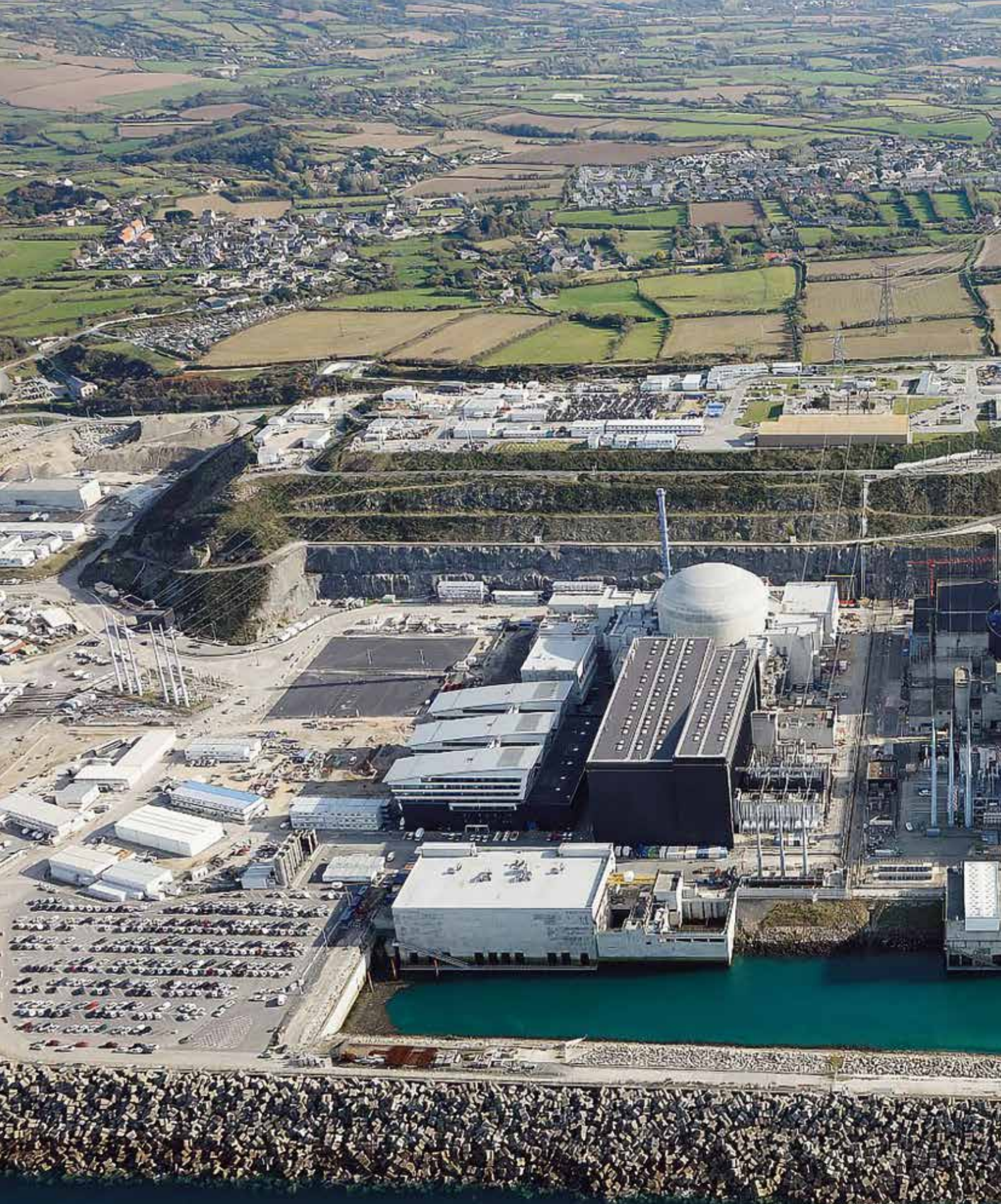
Dextra is the leading supplier of rebar splices in the Middle East. Our references in the United Arab Emirates include the tallest building in the world, the Burj Khalifa Tower, as well as most of the high-rise buildings in the Dubai business area.





King Power Mahanakhon, Thailand

Bangkok's 77-storey skyscraper, standing at 314 meters, uses rebar couplers for the D-walls, allowing for later reconnection during slab reinforcement, and Headed Bars for the thick foundation mat. The tower's superstructure features a core wall surrounded by 12 mega columns connected using Bartec couplers. Dextra also provided tension rod systems for the rooftop sky bar.



Flamanville 3 EPR Power Plant, France

During the past twenty years, Dextra has become a major partner and supplier of concrete reinforcement couplers to the civil nuclear Industry worldwide, including EPR reactor projects like Flamanville 3 (France), Taishan (China) and Hinkley Point C (UK).



Dubai Metro, UAE

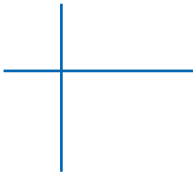
Dextra offers a wide range of technical products and solutions for subways and elevated metros projects and has a wealth of experience in this sector, having participated in almost all of the large metros projects in Asia-Pacific, Middle East, Europe and Latin America for the past thirty years.



Mumbai Trans Harbour Link, India

MTHL is India's longest sea bridge, featuring a 21.8 km 6-lane elevated highway bridge that connects Mumbai with Navi Mumbai. Dextra participated in the project by supplying over 290,000 Bartec couplers to reinforce the concrete structures, while Sonitec tubes were employed for assessing the structural integrity within barrette piles.

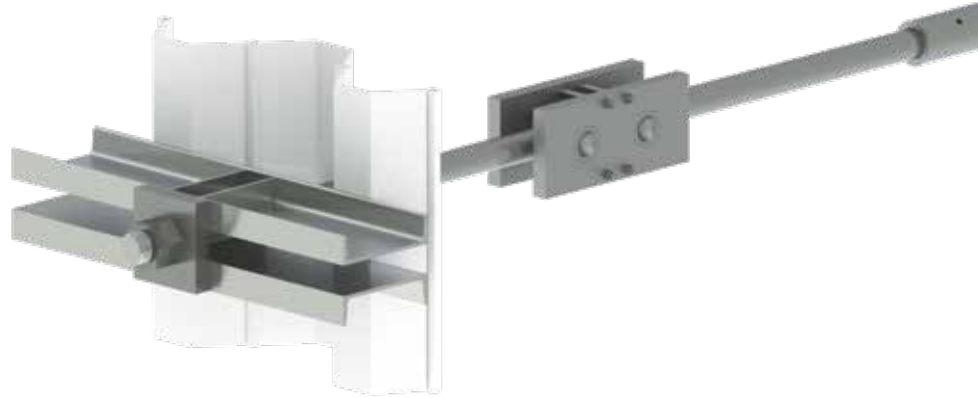




Bar Systems

Tie Bars for Ports and Harbours

Marine Tie Bars consist of large diameter bars assembled with various anchoring and fitting components used in port and harbour construction to anchor waterfront structures such as quay walls, berths and crane ways.



Tension Rods for Roofs and Façades

Tension Rods are typically used to hold or stiffen the roofs and façades of large structures. Exposed most of the time, they need to be strong and aesthetically pleasing.

With a wide range of sizes and accessories in various steel grades both carbon and stainless and various finishes, Dextra systems meet the engineering and design requirements of consultants and architects alike.



Post Tensioning Bars for Bridges and Viaducts

Post-tensioning bar systems can be used for both permanent and temporary applications. Our range includes both fully threaded bars and smooth bars, along with all the required accessories to perform applications such as post-tensioning heavy structures or temporary heavy-lifting operations.



Bubiyah Port, Kuwait

Dextra is regarded as a specialist manufacturer of Tie Bar systems for ports, with several references across continents.



West Gate Pass, Australia

Vertical permanent post tensioning of precast pier segments.







**Suvarnabhumi Bangkok International Airport,
Thailand**

More than a thousand tons of Dextra tension bars were installed in this landmark project, paving the way for Dextra to participate in several key airport projects around the world such as Abu Dhabi Airport, Heathrow T5, Kuwait International Airport, Dubai International Airport, and many more.

Ground Engineering Solutions

Soft-Eyes & Rock-Bolts

Cut-able support is primarily used in tunneling applications, especially at the portal or face, to provide temporary stabilization before advancing to the subsequent phase. The prevalence of Mechanized Tunneling, especially in urban settings and underground metro projects, is reshaping construction approaches. This modern technique necessitates innovative systems, such as cut-able reinforcement bars for concrete structures like Soft-Eyes in D-walls.

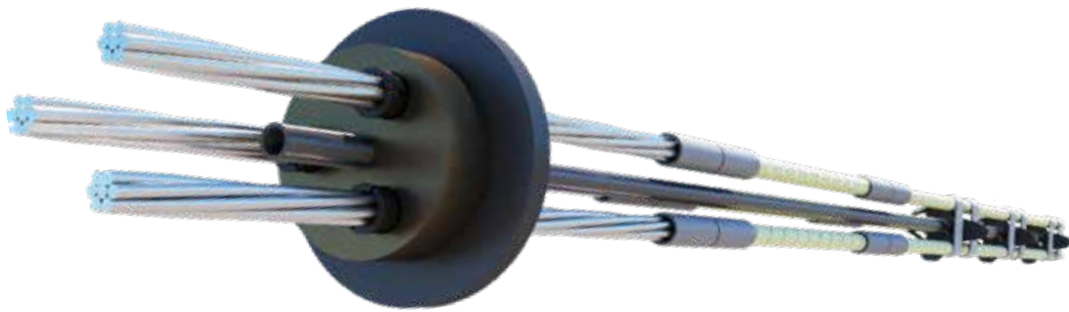
In the context of tunnel construction through drill & blast or conventional mining methods, the initial support comprises rock bolts, preceding the installation of any mesh or lining. Depending on the construction sequence and technology employed, a range of both temporary and permanent bolts can be utilized.



Active and passive ground anchors

Retaining walls for excavations serve as vertical structures with minimal deflection, often utilizing pre-stressed active anchors. These anchors consist of high-strength tendons connected to the retaining wall on one end and anchored to the ground on the other through a bulb of pressure-injected grout, known as the 'bond length.'

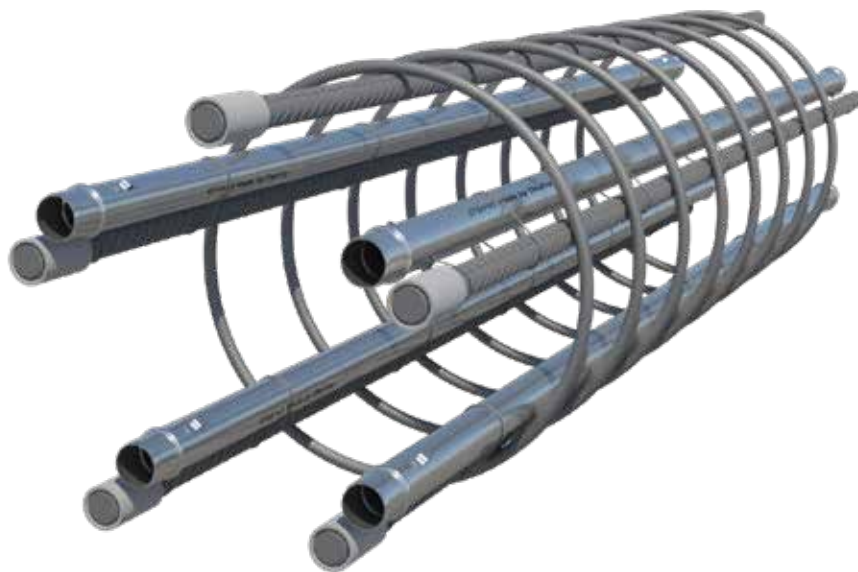
In scenarios involving soil-covered slopes where gravity constantly prompts soil movement downslope, the design incorporates passive anchors. These anchors employ high-strength tendons that are fully grouted from the slope's face into the stable ground, addressing the need for larger displacements on the slope.



Sonic logging tubes

Crosshole sonic logging (CSL) is a method to determine the structural integrity of drilled shafts and other concrete piles.

Sonitec is the only steel pipe system specifically designed and manufactured for this testing method.





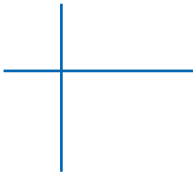
The Trojena, NEOM, Saudi Arabia

A linear smart city is under construction in Neom, Tabuk Province, Saudi Arabia, designed to have no cars, streets, or carbon emissions. Dextra has supplied a substantial quantity of steel and GFRP (Glass Fibre Reinforced Polymer) rock bolts for radial support and face bolting, contributing to the city's structural advancements and sustainability commitment.



Doha Musheireb Station, Qatar

Dextra supplied both soft-eyes for TBM tunneling and composite ground anchors for soil stabilization during excavations.



Trading

Piping Products in Macau and Hong Kong

For 35 years, our subsidiary Dextra Pacific Plumbing Ltd. has been the exclusive distributor of Pont a Mousson foundry (member of Saint Gobain Group) in Hong Kong supplying cast iron pipes to the most prestigious commercial and residential projects for the drainage of soil, waste and rainwater.

Building on its reputation, Dextra Pacific Plumbing Ltd. has extended its range of products to stainless steel fresh water supply pipes, architectural external drainage solutions and HVAC pumps.



International Commerce Center, Hong Kong

The International Commerce Centre in Hong Kong, standing at 484 meters tall with 108 floors, ranks among the world's top 10 tallest buildings. Dextra supplied over 800,000 rebar couplers for vertical reinforcement, used extensively in column connections and second phase rebar reconnection.





Dextra



Commercial presence
in more than **55 countries**



HEADQUARTERS THAILAND
Dextra Holding Services., Ltd.
Dextra Manufacturing Co., Ltd.
Tel: (66) 2119 4400, (66) 2 021 3800
E-mail: thailand@dextragroup.com



EUROPE
Dextra Europe SARL
Tel: (33) 1 45 53 70 82
E-mail: europe@dextragroup.com



NORTH AMERICA
Dextra America Inc.
Tel: (1) 626 254 3407
E-mail: america@dextragroup.com



CHINA
Dextra Building Products
(Guangdong) Co., Ltd.
Tel: (86) 20 2261 9901
E-mail: china@dextragroup.com



MIDDLE EAST
Dextra Middle-East FZE
Tel: (971) 4886 5620
E-mail: middleeast@dextragroup.com



LATIN AMERICA
Dextra Latam
Tel: (507) 6454 8100
E-mail: latam@dextragroup.com



HONG KONG
Dextra Pacific Ltd. & Dextra China Ltd.
Dextra Pacific Plumbing Ltd.
Tel: (852) 2820 5201
E-mail: dpibuilding@dextragroup.com



INDIA
Dextra India Pvt. Ltd.
Tel: (91) 22 2839 2694
E-mail: india@dextragroup.com

Contact Us



reliable
connections



www.dextragroup.com