

1.5-6 TON Rear wheel steering rough terrain forklift 后轮转向越野叉车



High-quality air filters to meet different emissions, realize the second muffling of the engine and reduce exhaust resistance at the same time.

高品质空滤，满足不同排放，实现发动机的二次消音，同时减小排气阻力。



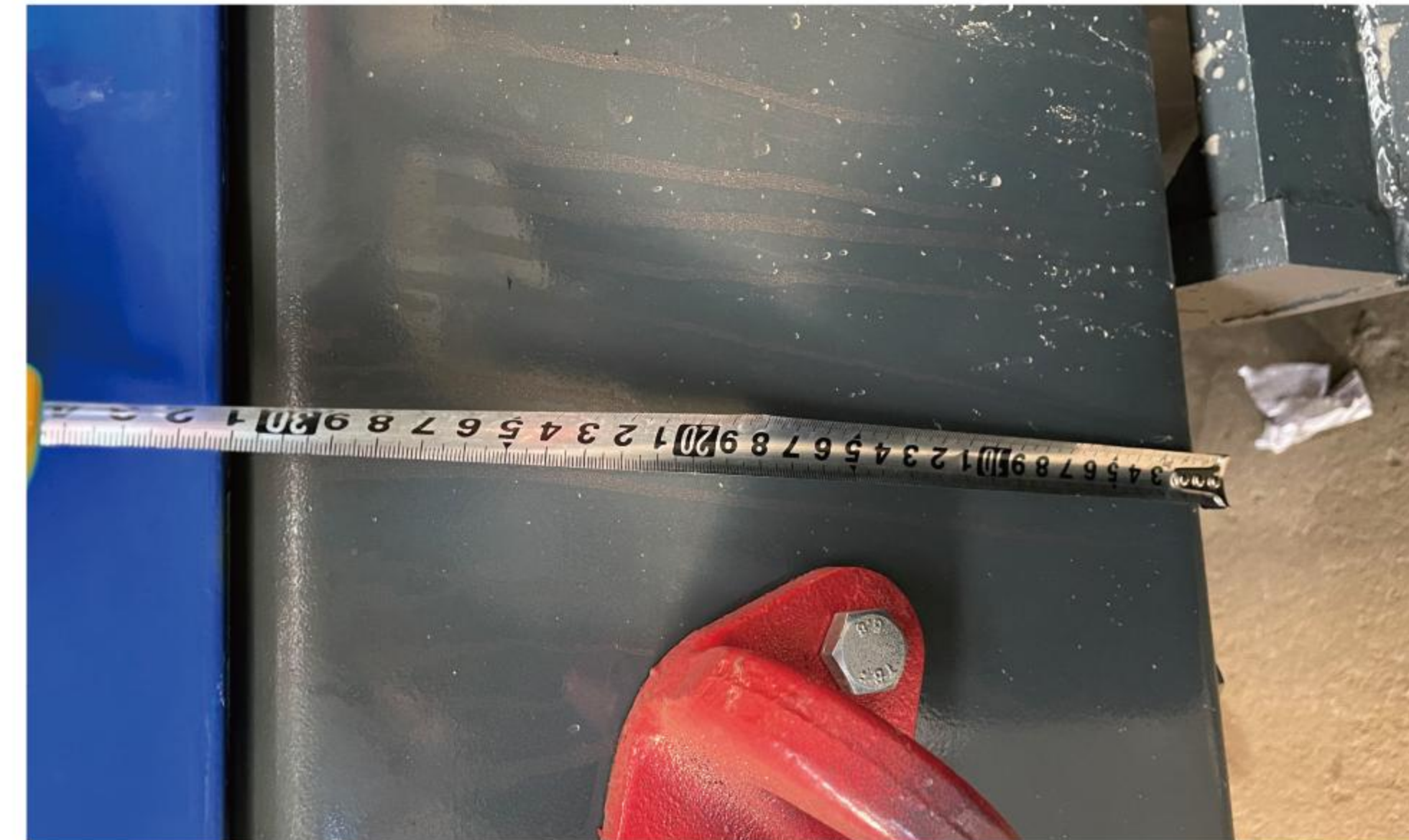
Honeycomb cover design, good heat dissipation performance, easy to access and maintenance.

蜂窝机罩设计，散热性能好，易于检修维护。



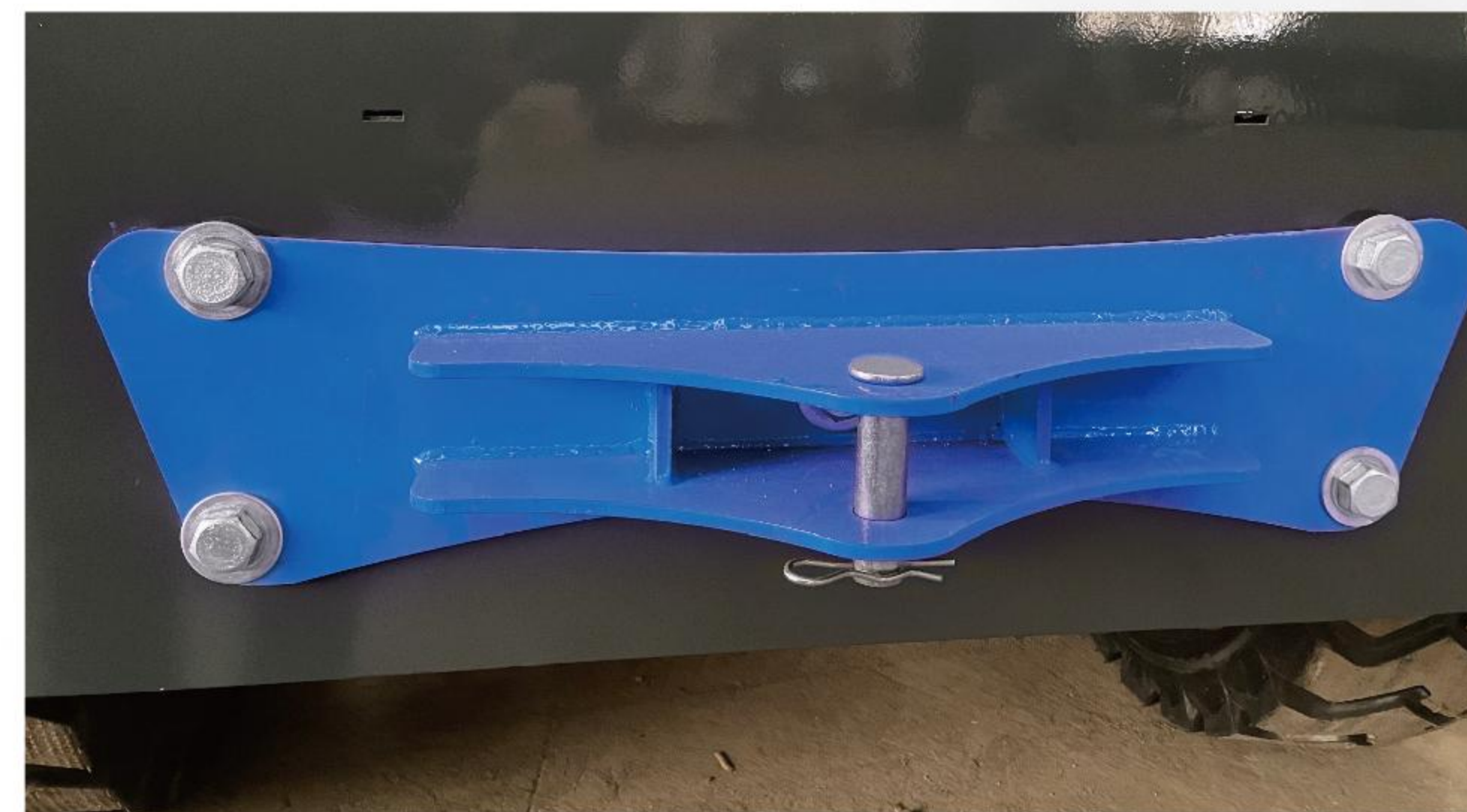
The articulation point is located in the rear design, small turning radius, stable center of gravity, not easy to rollover

铰接点位于后方设计，转弯半径小，重心稳，不易侧翻。



Thickened bottom steel plate, thickness up to 30cm, compared with ordinary forklift trucks are more robust.

加厚型底部钢板，厚度达30cm，相比普通叉车更结实。



Adopting larger traction seat, stronger and more stable pulling force.

采用加大牵引座，拉力更强劲，更稳定。



Rear wheel steering for heavy loads without tilting in turns, strong off-road performance.

后轮转向载重转弯不倾斜，越野性能强。

“ The whole vehicle uses thickened steel plate for better performance. 整车使用加厚钢板，性能更卓越。

Rear wheel steering design, more flexible than ordinary rough terrain forklifts. 后轮转向设计，比普通越野叉车更灵活。

The inter-cooling, scattered water, oil scattered are independent layout, which greatly increase the engine, gearbox and other core components quality. 中冷、散水、散油均为独立布置，大大提高了发动机、变速箱等核心部件的质量。 ”



基本参数 Technical Parameters (1.5-6Ton)

型号 Model		LTR15	LTR25	LTR30	LTR35	LTR40	LTR50	LTR60
额定载荷 Rated Capacity	kg	1500	2500	3000	3500	4000	5000	6000
门架宽度 Mast Width	mm	148	160	160	160	180	180	180
最大爬坡度 (空载/满载) Max. Gradeability (No load/Full load)	0%	<35°	<35°	<35°	<35°	<35°	<35°	<35°
车架铰接 Frame articulation	mm	Front200/ Rear150	Front200/ Rear250	Front200/ Rear250	Front200/ Rear250	Front200/ Rear250	Front250/ Rear300	Front250/ Rear300
自重 Self Weight	kg	2680	4050	4390	4400	5200	5700	6300
门架倾角 (前/后) Mast Tilt Angle(F/R)	Deg	12°	12°	12°	12°	12°	12°	12°
尺寸 Dimension	cm	310*135*230	365*180*245	370*180*245	370*180*245	380*198*260	390*208*265	400*240*260
轮胎 Tires	mm	10.00-16	20.5/70-16	20.5/70-16	20.5/70-16	16/70-20	16/70-24	12R22.5
转弯半径 Turning Radius (outside tires)	mm	3100	3500	3600	3600	3800	3900	4100
举升高度 Lift Height	mm	3000	3000	3000	3000	3000	3000	3000
货叉长度 Fork Length (standard)	mm	1220	1220	1220	1220	1220	1220	1220
最小离地间隙 (门架处) Ground Clearance (Bottom of mast)	mm	230	235	240	240	300	330	330
门架不起升高度 Mast Lowered Height	mm	2200	2230	2240	2240	2300	2330	2330
发动机 Engine		Yunnei490	Yunnei490	Yunnei490	Yunnei490	Yunnei4100	Yunnei4102	Yunnei4102
额定功率/转速 Rated output/r.p.m.	kw	42/2200-2400	42/2200-2400	42/2200-2400	58/2200-2400	65/3200	78/3200	78/3200
最大扭矩/转速 Max. Rated torque/r.p.m.	N·m	220-450/ 1500-1800	220-450/ 1500-1800	220-450/ 1500-1800	220-450/ 1500-1800	285/1200-2800	285/1200-2800	285/1200-2800
气缸数 No.of Cylinder		4	4	4	4	4	4	4
缸径x行程 No.of Cylinder	mm	102x115	102x115	102x115	102x115	81x97	81x97	81x97
排量 Displacement	L	3.76	3.76	3.76	3.76	1.99	1.99	1.99
驱动方式 Drive Model		4WD	4WD	4WD	4WD	4WD	4WD	4WD
变速箱 Gearbox		265	265	265	265	280	280	280

两级全自由门架 Full Free 2-Stage Mast (1.5-6Ton)

门架类型 (Mast Type)	起升高度 (mm) (Lift Height)	不起升高度(mm) Mast Lowered Height				
		3t	3.5t	4t	5t	6t
Z300	3000	2250	2250	2260	2270	2260
Z350	3500	2500	2500	2510	2520	2510
Z400	4000	2850	2850	2860	2870	2860
Z450	4500	3050	3050	3060	3070	3060

三级全自由门架 Full Free 3-Stage Mast (1.5-6Ton)

S450	4000	2250	2250	2260	2270	2260
S500	4500	2500	2500	2500	2520	2510
S600	6000	3050	3050	3050	3070	3060

