

The boom adopts closed box type welded structure, strengthened main boom support, good overall torsion resistance.
动臂斗杆采用封闭箱体式焊接结构, 强化型主臂支撑, 整体抗扭性能好。



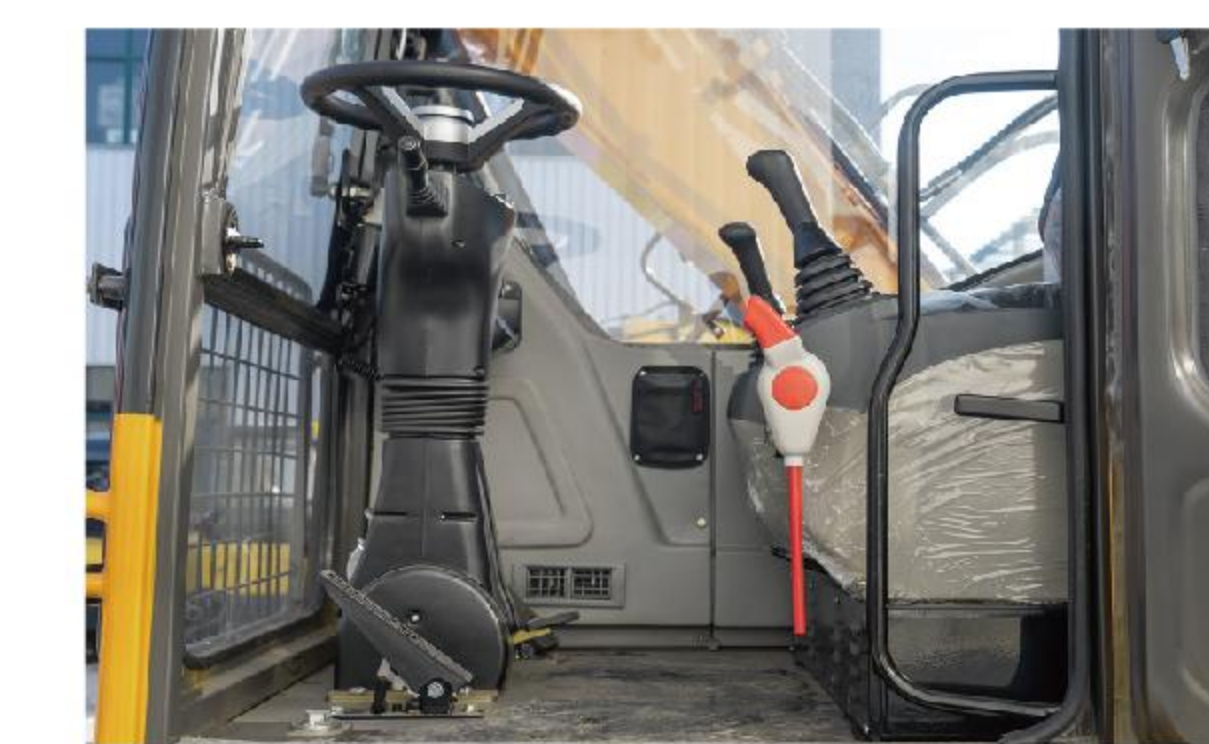
Equipped with four-wheel hydraulic braking system, simple construction and easier maintenance.
搭载四轮液压制动系统, 构造简单, 更容易维护。



Upper platform cladding with low profile design for better side visibility for the driver.
上平台覆盖件采用低身位设计, 使驾驶员拥有更佳的侧方位视野。



Enhanced carcass construction, high performance rubber compound for longer service life.
增强型胎体结构, 高性能橡胶配方, 使用寿命更长。



Spacious and comfortable interior with ergonomically designed operating layout.
宽敞舒适的内部构造, 操作布局符合人体工程学设计。



Outrigger design for safe and stable operation.
支腿设计, 作业安全稳定。

性能参数 Performance Parameters

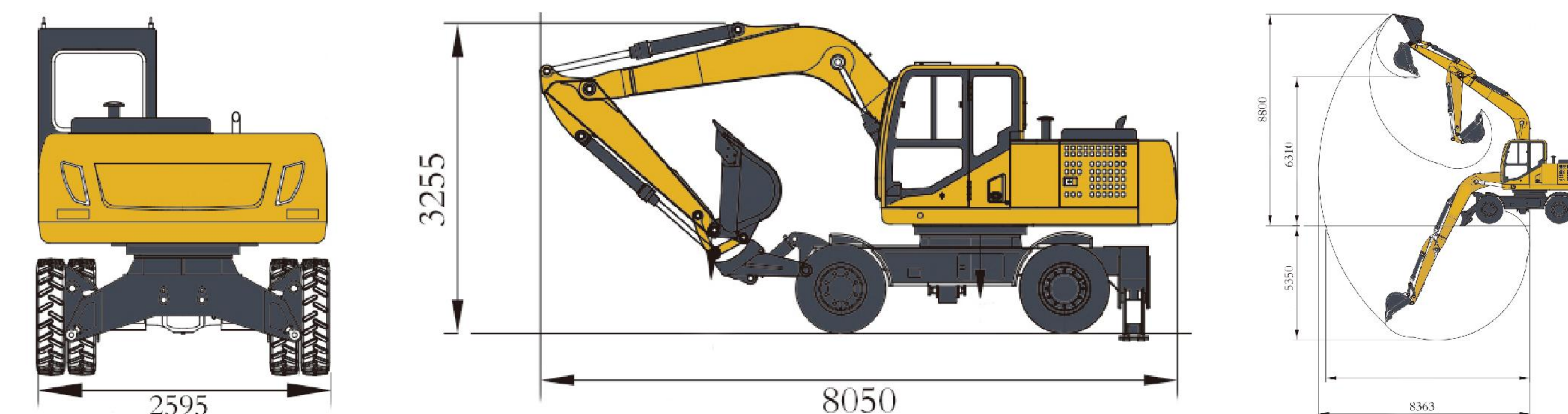
型号	Model	LWE180	
工作重量	Operating Weight	Kg	16000
发动机型号	Engine Model	Cummins B5.9CS4-150C	
额定功率	Rated Power	Kw	111kw/2200rpm
挖斗容量	Bucket Capacity	m ³	0.8
最大挖掘力	Max. Digging Force	Kn	100
回转速度	Swing Speed	rpm	0-12
行走速度	Traveling Speed	km/h	0-35
爬坡能力	Gradeability	°	25°

外形尺寸 Overall Dimensions

型号	Model	LWE180	
总长度	Overall Length	mm	8050
总宽	Overall Width	mm	2595
总高	Overall Height	mm	3255
底盘宽度	Undercarriage width	mm	2595
大臂长	Boom length	mm	4800
小臂长	Arm length	mm	2500
轮胎尺寸	Tire Size	PR	10.00-20

工作范围 Working Range

型号	Model	LWE180	
最大挖掘半径	Max. Digging Radius	mm	8363
最大挖掘深度	Max. Digging Depth	mm	5350
最大挖掘高度	Max. Digging Height	mm	8800
最大卸载高度	Max. Dumping Height	mm	6310
最小摆动半径	Min.Swing Radius	mm	2723



With technological innovation our product configuration and parameters will continue to change without notice.
随着技术的革新, 我们的产品配置和参数将不断变化, 恕不另行通知。