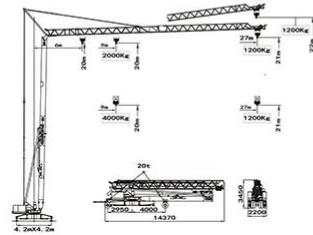


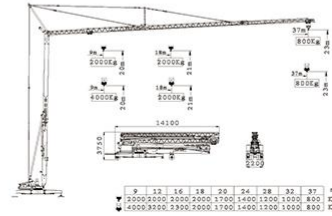


JFYT SELF-ERECTING INTELLIGENT
TOWER CRANE
快速架设移动塔式起重机

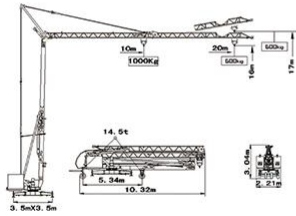
国家高新技术企业 National High-Tech Enterprise



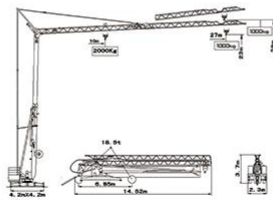
JFYT2227-40



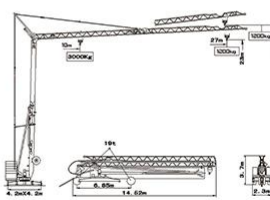
JFYT2337-40



JFYT1720-10



JFYT2527-20



JFYT2527-30



徐州市久发工程机械有限责任公司

地址：徐州铜山区大彭工业园1号
 Add: No. 1 Dapeng Industrial Park, Tongshan District, Xuzhou, Jiangsu, China
 电话(Tel): 86-0516-85055801 / 85059888
 邮箱(E-mail): sales@xzjufa.com
 网站(Web): 中文<https://www.xzjcm.com/> 英文<https://www.cnxjcm.com/>





XUZHOU JIUFA

CONSTRUCTION MACHINERY CO., LTD.

徐州市久发工程机械有限责任公司

徐州久发机械是国内专业研发、制造和经营越野起重机及其他工程机械产品的国家级高新技术企业。公司具备完善的技术质量保障管理体系，并通过了ISO9001质量管理体系、ISO18001职业健康安全管理体系以及CE认证、GOST认证。公司作为江苏省科技厅批准的“越野轮胎起重装备工程技术研究中心”与吉林大学建立并保持着长期的产学研合作关系。目前公司已拥有56项专利技术，包括发明专利15项及实用新型专利41项。产品主要包括RT系列越野起重机、QY系列汽车起重机、DG系列多功能吊管机、JFYT系列快速移动自架设智能塔机、自装卸智能环卫车及工程机械关键零部件等。其中DG系列多功能吊管机和自装卸智能环卫车获全球发明专利，JFYT系列快速移动自架设智能塔机为国内首创产品。

由本公司自主研发的“RT系列越野起重机”被江苏省科技厅认定为“高新技术产品”并被科技部列入“国家火炬计划产业化示范项目”。该系列机型应用了计算机控制技术、CAN总线技术、液压先导比例控制技术、电控换挡无级变速技术、四轮转向定位检测技术以及安全影像监控系统等，使其成为高技术含量的机电仪一体化产品。该机型采用自制专用越野底盘，进口车桥、变速箱、四轮驱动、同步转向，具有高动力、高通过性。该机型为全液压配置，可实现连续无级变速、蟹行、负重行驶。该机型既适合在山地、矿山等野外复杂路况地施工，也适合在港口、货场等狭小的场地作业，可满足各行业不同用户对现场吊运作业的特殊需求。

本公司创建于2002年，注册资本金7,600万元，总投资三亿元。公司占地面积300余亩，现建有10万多平米的标准化工业厂房以及九千多平米的科研大楼、七千多平米的综合贸易楼。公司自成立以来，陆续投资购置了包括火焰切割机、激光下料设备、精细等离子切割机、大型剪板机、大型校平机、大吨位压力机、2500吨级大型数控折弯机以及数显卧式双面铣床、林肯焊机、标准化喷漆线、三坐标检测仪、焊接探伤仪等先进机械加工和检测设备，具备年产3000台套以上大型工程机械设备的生产组织及加工制造能力。

公司地处“中国工程机械之都”的江苏省徐州市铜山区大彭镇工业园区内，紧邻310国道及徐州绕城高速出入口，具有优越的零部件配套采购市场环境及发达便利的交通地理位置。目前公司主营的RT系列越野起重机产品，95%以上出口国外，主要销往非洲、南美、中东、西亚、东南亚和独联体等40多个国家和地区。

Xuzhou Jiufa Construction Machinery Co., Ltd. (XJCM) is a national high-tech enterprise which professionally designs, produces and deals with the rough terrain crane and other construction machinery. XJCM has the well-run technology and quality guarantee management system with ISO9001 Quality Management System Certificate, ISO18001 Occupation Health and Safety Management System Certification, CE Certificate and GOST Certificate. As the approved "Rough terrain crane Engineering Technology Research Center" by the Department of Science and Technology of Jiangsu Province, XJCM has the long-term research cooperation relationship with Jilin University. XJCM has 56 patents at present, including 15 patents for invention and 41 patents for utility models. XJCM main products include RT series of rough terrain crane, QY series of truck crane, DG series of multifunction pipelayer, JFYT series of rapid traveling self-erecting intelligent tower crane, self-loading & self-unloading intelligent environment protecting truck and key parts of construction machinery, etc. Thereinto, DG series of multifunction pipelayer and self-loading & self-unloading intelligent environment protecting truck get the global patent for invention, and JFYT series of rapid traveling self-erecting intelligent tower crane is the pioneer product in China.

The self-developed RT series of rough terrain cranes have been identified as "high-tech products" by Department of science and technology of Jiangsu Province and have been involved in "National Torch Project" by the national Ministry of science and technology. It adopts the computer control technology, CAN bus technology, hydraulic pilot proportional control technology, electric control shift stepless speed change technology, four wheels steering locating and detection technology and security image monitoring system, etc. So, it is a kind of high technology integrated product of mechanic, electronic and instrument. It adopts the self-produced off-road chassis, imported axles and imported gearbox. It has the features of four-wheel drive, synchronous steering, high dynamic and high trafficability characteristic. It adopts fully hydraulic configuration and can realize the stepless speed change, crab steering and traveling with load. It is suitable for the outdoor complex road conditions construction, for example, mountain, mine, etc., and narrow site operating, for example, port, freight yards, etc. It can satisfy the different and special hoisting requirement for different industries and different users.

XJCM was founded in 2002. The register capital is \$ 45 million, occupying more than 200 thousand square meters area. At present, more than 100 thousand square meters of standard industrial plant, more than 9000 square meters of Science and technology R&D building and more than 7000 square meters of International trade building are available in XJCM. Until now, XJCM has advanced machining equipment and detecting equipment, including flame cutting machine, laser cutting machine, fine plasma cutting machine, large shearing machine, large leveling machine, large press machine, 2500ton model of large scale CNC bending machine, digital display horizontal double side boring and milling machine, precision machining equipment, Lincoln welding machine, standard spray paint line, coordinate measuring machine, welding flaw detector, etc. XJCM has production capacity more than 3000 sets of large construction machinery.

XJCM locates in Dapeng Industrial Park, Xuzhou City, Jiangsu province, China which is the city of China construction machinery, next to the 310 national highway and the west entry and exit of Xuzhou city belt expressway. XJCM has the superior parts purchasing conditions and convenient traffic location. At present, more than 95% of RT series of rough terrain crane, as the main product of XJCM, is mainly exported to more than 40 countries and regions, like Africa, South America, Middle East, West Africa, East and South Asia, CIS and so on.

以匠心铸品质·以责任赢诚信

Crafting quality with craftsmanship. Winning Integrity with Responsibility



XUZHOU JIUFA

CONSTRUCTION MACHINERY

自架式塔式起重机

优点:

- 1、不需基础,节省基础费用,对场地条件要求低
- 2、架设迅速,到达工地快速完成架设,快速投入工作
- 3、全部架设和拆卸过程无一处人工高空作业
- 4、塔身自动锁紧,臂架空中自动对接
- 5、无需专职司机,操作简单,即学即会
- 6、遥控操作,解放操作工劳动强度,增大操作视野
- 7、整体托运

Advantages:

1. Without foundation, saving construction cost, low requirement for site conditions.
2. Erecting and starting rapidly.
3. None working on the high level during erecting and dismantling.
4. Mast locked automatically, jib sections connected automatically in the air.
5. No require professional operator, operating simply, mastering easily.
6. Wireless remote operating, reducing working labor strength, having wide operating view.
7. Transporting wholly.



自架式塔式起重机 SELF SUPPORTING TOWER CRANE



项目	Project	单位 Unit	JFYT2227-40	JFYT1924-40	JFYT2337-40	JFYT2527-30(U)
外形尺寸	Dimensions	m	14420*2200*3450	12900*2200*3450	14100*2200*3750	14300*2200*3250
起升最大高度	Maximum lifting height	m	22	19	23	23
最大工作幅度	Maximum working range	m	27	24	37	26
最大起重量	Maximum lifting capacity	Kg	4000	4000	4000	2900
最大起重量时的最大工作幅度	Maximum working range at maximum lifting capacity	m	9	9	9	9
最大工作幅度吊重	Maximum working range lifting weight	Kg	1200	1300	600	1000
架设时间	Erection time	min	10	10	15	10
支腿跨距	Outrigger span	m	4.2X4.2	4.2X4.2	5.0X5.0	4.2X4.2
液压系统工作压力	Hydraulic system working pressure	Mpa	28	28	28	28
最大拖行速度	Maximum towing speed	Km/h	15	15	15	15
电源	power supply		380V/50Hz	380V/50Hz	380V/50Hz	380V/50Hz
总功率	Total power	KW	27.1	27.1	27.1	23.1
整机重量 (运输重量)	Overall machine weight (transportation weight)	Kg	21000Kg	20000Kg	23000Kg	19500Kg
工作时最大重量 (含最大吊重)	Maximum weight during operation (including maximum lifting weight)	Kg	40000Kg	39000Kg	47000Kg	35000Kg
特点	Features		施耐德电气, PLC 控制, 无线遥控操作, 久发力 limiter, 全自动架设, 液压支腿, 风速仪 (Schneider Electric, PLC control, wireless remote control operation, jiu force limiter, fully automatic erection, hydraulic outriggers, anemometer)	施耐德电气, PLC 控制, 无线遥控操作, 久发力 limiter, 全自动架设, 液压支腿, 风速仪 (Schneider Electric, PLC control, wireless remote control operation, jiu force limiter, fully automatic erection, hydraulic outriggers, anemometer)	施耐德电气, PLC 控制, 无线遥控操作, 久发力 limiter, 全自动架设, 液压支腿, 风速仪 (Schneider Electric, PLC control, wireless remote control operation, jiu force limiter, fully automatic erection, hydraulic outriggers, anemometer)	德力西或正泰电气, 无线遥控操作, 久发力 limiter, 全自动架设, 液压支腿, 风速仪 (Delixi or Chint Electric, wireless remote control operation, jiu force limiter, fully automatic erection, hydraulic legs, anemometer)

项目	Project	单位 Unit	JFYT2024-30	JFYT2527-20(U)	JFYT2024-20	JFYT1720-10
外形尺寸	Dimensions	m	13000*2200*3250	14300*2200*3200	13000*2200*3200	10400*2200*3040
起升最大高度	Maximum lifting height	m	20	23	20	16
最大工作幅度	Maximum working range	m	24	26	24	18
最大起重量	Maximum lifting capacity	Kg	2900	2000	2000	1000
最大起重量时的最大工作幅度	Maximum working range at maximum lifting capacity	m	9	10	10	10
最大工作幅度吊重	Maximum working range lifting weight	Kg	1000	800	800	500
架设时间	Erection time	min	10	10	10	6
支腿跨距	Outrigger span	m	4.2X4.2	4.2X4.2	4.2X4.2	3.5X3.5
液压系统工作压力	Hydraulic system working pressure	Mpa	28	28	28	28
最大拖行速度	Maximum towing speed	Km/h	15	15	15	15
电源	power supply		380V/50Hz	380V/50Hz	380V/50Hz	380V/50Hz
总功率	Total power	KW	23.1	23.1	23.1	11.4
整机重量 (运输重量)	Overall machine weight (transportation weight)	Kg	18500Kg	18500Kg	17500Kg	14500Kg
工作时最大重量 (含最大吊重)	Maximum weight during operation (including maximum lifting weight)	Kg	34000Kg	28000Kg	27000Kg	15500Kg
特点	Features		德力西或正泰电气, 无线遥控操作, 久发力 limiter, 全自动架设, 液压支腿, 风速仪 (Delixi or Chint Electric, wireless remote control operation, jiu force limiter, fully automatic erection, hydraulic legs, anemometer)	德力西或正泰电气, 无线遥控操作, 久发力 limiter, 全自动架设, 液压支腿, 风速仪 (Delixi or Chint Electric, wireless remote control operation, jiu force limiter, fully automatic erection, hydraulic legs, anemometer)	德力西或正泰电气, 无线遥控操作, 久发力 limiter, 全自动架设, 液压支腿, 风速仪 (Delixi or Chint Electric, wireless remote control operation, jiu force limiter, fully automatic erection, hydraulic legs, anemometer)	德力西或正泰电气, 无线遥控操作, 久发力 limiter, 全自动架设, 液压支腿, 风速仪 (Delixi or Chint Electric, wireless remote control operation, jiu force limiter, fully automatic erection, hydraulic legs, anemometer)

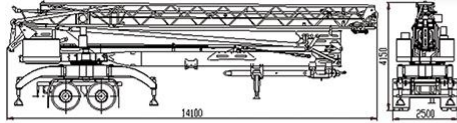
QTKZ-20

快速牵引移动架设智能塔机

QTKZ-20 RAPID TRACTION AND MOBILE ERECTION OF INTELLIGENT TOWER CRANE



外形图 / Outline drawing



主要技术参数 / Main technical specifications

类别 Category	项目 Item	单位 Unit	QTKZ-20				
起重作业参数 Lifting operation parameters	起升最大高度 Maximum lifting height	m	24				
	最大工作幅度 Maximum working range	m	26				
	最大起重量 Maximum lifting capacity	Kg	2000				
	起升速度 Lifting speed	m/min	13/26				
	变幅速度 Derricking speed	m/min	20/40				
	回转速度 Rotation speed	r/min	0.25/0.8				
	架设时间 Hypothetical time	min	10				
	支腿跨距 Outrigger span	m	4.2X4.2				
行驶参数 Travel parameter	最大拖行速度 Maximum towing speed	Km/h	80/25				
外形尺寸 (长x宽x高) Dimensions		m	14.1X2.5X4.15				
液压系统 Hydraulic system	液压系统工作压力 Working pressure of hydraulic system	MPa	28				
电源 Power Supply			380V/50Hz				
起重性能表 Hydraulic system	幅度(m) Range		10	12	15	20	26
	起重量(kg) Lifting capacity		2000	1600	1300	1000	800



QTYZ-20

越野智能塔式起重机

QTYZ-20 OFF ROAD INTELLIGENT TOWER CRANE



优点:

- 不需要基础, 节省基础费用;
- 架设迅速, 到达工地快速完成架设, 快速投入工作;
- 全部架设和拆卸过程无一处高空作业;
- 工作采用电液比例阀控制, 配合无线遥控器, 操作灵敏舒适, 更安全, 更方便;
- 工作采用双动力控制, 经济节能;
- 采用力矩限制系统, 操作更安全可靠;
- 液压垂直支腿采用机械锁紧, 有效防止由于油缸内泄造成支腿下沉, 工作更安全。

Advantages:

- No foundation is needed, saving basic cost.
- Fast erection, fast completion of erection upon arrival at the construction site and fast operation.
- There is no high-altitude operation in the process of all erection and dismantling.
- The work is controlled by electro-hydraulic proportional valve, with wireless remote control, the operation is sensitive, comfortable, safer and more convenient.
- Double power control is adopted for the work, which is economical and energy-saving.
- The torque limiting system is adopted to make the operation safer and more reliable.
- The hydraulic vertical outrigger is mechanically locked to effectively prevent the outrigger from sinking due to the internal leakage of the oil cylinder, and the work is safer.

主要技术参数 / Main technical specifications

外形尺寸 Outline size	整机长 Whole machine length:	13620mm
	整机宽 Whole machine width:	2635mm
	整机高 Whole machine height:	3750mm
起重作业参数 Lifting operation parameters	起升最大高度 Maximum lifting height:	22m
	最大工作幅度 Maximum operating range:	21m
	最大额定起重量 Maximum rated lifting capacity:	1800kg
	最大起升速度 Maximum lifting speed:	27m/min
	最大变幅速度 Maximum luffing speed:	40m/min
	回转速度 Slewing speed:	1r/min
	架设时间 Erection time:	10min
	支腿跨距 Leg span:	7.9x5.2 m
	整机重量 Weight of whole machine:	21000kg
	最大行驶速度 Maximum travel speed:	25km/h
液压系统工作压力 Working pressure of hydraulic system	架设机构 Erection mechanism:	28Mpa
	工作机构 Working mechanism:	28Mpa
电源 Power Supply	工作功率 Working power:	18.5kw
	电源 Power Supply:	380V/50Hz

起重性能表 Lifting performance table

幅度(米) Amplitude (m)	起重量(kg) Lifting capacity (kg)
11	1800
15	1200
18	1100
21	900

快速机动跨越装置

SELF-ERECTING INTELLIGENT ERECTING CRANE BY TOWING DEVICE

优点:

- 架线主臂采用折叠伸缩机构, 可实现360°全回转、快速跨越架线; 高度可任意调节, 满足不同架线工况;
- 拖式行走机构节省成本, 安全可靠视野宽阔, 简单易学;
- 设备到达场地可在10分钟完成架线作业准备。

Advantages:

- The main arm of the overhead line adopts a folding and telescopic mechanism, which can achieve 360° full rotation and fast crossing of the overhead line. The height can be adjusted arbitrarily to meet different overhead working conditions;
- The towed walking mechanism saves costs, is safe, reliable, has a wide field of vision, and is simple and easy to learn;
- The equipment can be ready for installation work within 10 minutes upon arrival at the site.



主要技术参数 / Main technical specifications

类别 Category	项目 Item	单位 Unit	参数 Parameters
动力参数 Power	总功率 Engine rated output	Kw	9.7
行驶参数 Travel	最高拖行速度 Max.towing speed	Kw/h	15
支腿跨距 Outrigger span	横向x纵向 Horizontal x vertical	m	4.2x4.2
托举参数 Supporting parameters	最高托举高度 Max.supporting height	m	31
	最低托举高度 Min.supporting height	m	20
	托举重量 Supporting weight	Kg	1000
	托举宽度 Supporting width	m	6-10
架设机构参数 Erecting device	架设时间 Erecting time	min	10
	折叠时间 Folding time	min	10



越野起重快速架线机

SELF-ERECTING INTELLIGENT ERECTING CRANE ON MOBILE CRANE CHASSIS

优点:

- 采用越野起重机原型, 增加快速架线功能, 实现吊装、快速架线一机多能;
- 四轮驱动: 越野能力强, 适用于泥泞、山路、沼泽等复杂路况, 通过性优;
- 四轮转向: 转弯半径小, 适用于狭窄场地工况;
- 吊重行驶: 可实现带载行驶, 方便货物转运;
- 设备到达场地可在10分钟完成架线作业准备;
- 架线主臂采用伸缩臂结构, 360°全回转, 可随意调整架线角度, 满足各种工况要求。

Advantages:

- Adopting a prototype of an off-road crane, adding the function of fast wiring, achieving multiple functions for lifting and fast wiring with one machine;
- Four wheel drive: Strong off-road capability, suitable for complex road conditions such as mud, mountain roads, swamps, etc., with excellent passability;
- Four wheel steering: small turning radius, suitable for narrow site conditions;
- Crane driving: It can achieve loaded driving and facilitate the transportation of goods;
- The equipment can be ready for installation work within 10 minutes upon arrival at the site;
- The main arm of the overhead line adopts a telescopic arm structure, with a 360° full rotation, and the installation angle can be adjusted freely to meet various working conditions.



主要技术参数 / Main technical specifications

类别 Category	项目 Item	单位 Unit	参数 Parameters	
动力参数 Power	发动机额定功率 Engine rated output	Kw/(r/min)	92/2200	
行驶参数 Travel	行驶速度 Travel speed	Kw/h	50	
	最高行驶速度 Max. travel speed Km/h			
主要性能参数 Lifting performance	最大额定总起重量 Max. total rated lifting load		t	10
	支腿距离 Outrigger span	纵向 Longitudinal	m	5.45
		横向 Lateral	m	5
	起升高度 Lifting height	基本臂 Boom	m	8.5
		最长主臂 Fully extended boom	m	24.2
	托举参数 Supporting parameters	托举高度 Supporting height	m	28
托举宽度 Supporting width		m	6	
托举重量 Supporting weight		Kg	1000	