



出口至**43**个国家
EXPORTED TO 43 COUNTRIES

 **XJCM** 徐州久发机械

徐州市久发工程机械有限责任公司

地址：徐州铜山区大彭工业园1号

Add: No. 1 Dapeng Industrial Park, Tongshan District, Xuzhou, Jiangsu, China

电话(Tel): 86-0516-85055801 / 85059888

邮箱(E-mail): sales@xzjufa.com

网站(Web): 中文<https://www.xzjcm.com/> 英文<https://www.cnxjcm.com/>



RT ROUGH TERRAIN CRANE

越野轮胎起重机

国家高新技术企业 National High-Tech Enterprise



 **XJCM**



XUZHOU JIUFA

CONSTRUCTION MACHINERY CO., LTD.

徐州市久发工程机械有限责任公司

徐州久发机械是国内专业研发、制造和经营越野起重机及其他工程机械产品的国家级高新技术企业。公司具备完善的技术质量保障管理体系，并通过了ISO9001质量管理体系、ISO18001职业健康安全管理体系以及CE认证、GOST认证。公司作为江苏省科技厅批准的“越野轮胎起重装备工程技术研究中心”与吉林大学建立并保持着长期的产学研合作关系。目前公司已拥有56项专利技术，包括发明专利15项及实用新型专利41项。产品主要包括RT系列越野起重机、QY系列汽车起重机、DG系列多功能吊管机、JFYT系列快速移动自架设智能塔机、自装卸智能环卫车及工程机械关键零部件等。其中DG系列多功能吊管机和自装卸智能环卫车获全球发明专利，JFYT系列快速移动自架设智能塔机为国内首创产品。

由本公司自主研发的“RT系列越野起重机”被江苏省科技厅认定为“高新技术产品”并被科技部列入“国家火炬计划产业化示范项目”。该系列机型应用了计算机控制技术、CAN总线技术、液压先导比例控制技术、电控换挡无级变速技术、四轮转向定位检测技术以及安全影像监控系统等，使其成为高技术含量的机电仪一体化产品。该机型采用自制专用越野底盘，进口车桥、变速箱、四轮驱动、同步转向，具有高动力、高通过性。该机型为全液压配置，可实现连续无级变速、蟹行、负重行驶。该机型既适合在山地、矿山等野外复杂路况地施工，也适合在港口、货场等狭小的场地作业，可满足各行业不同用户对现场吊运作业的特殊需求。

本公司创建于2002年，注册资本金7,600万元，总投资三亿元。公司占地面积300余亩，现建有10万多平米的标准化工业厂房以及九千多平米的科研大楼、七千多平米的综合贸易楼。公司自成立以来，陆续投资购置了包括火焰切割机、激光下料设备、精细等离子切割机、大型剪板机、大型校平机、大吨位压力机、2500吨级大型数控折弯机以及数显卧式双面铣床、林肯焊机、标准化喷漆线、三坐标检测仪、焊接探伤仪等先进机械加工和检测设备，具备年产3000台套以上大型工程机械设备的生产组织及加工制造能力。

公司地处“中国工程机械之都”的江苏省徐州市铜山区大彭镇工业园区内，紧邻310国道及徐州绕城高速出入口，具有优越的零部件配套采购市场环境及发达便利的交通地理位置。目前公司主营的RT系列越野起重机产品，95%以上出口国外，主要销往非洲、南美、中东、西亚、东南亚和独联体等40多个国家和地区。

Xuzhou Jiufa Construction Machinery Co., Ltd. (XJCM) is a national high-tech enterprise which professionally designs, produces and deals with the rough terrain crane and other construction machinery. XJCM has the well-run technology and quality guarantee management system with ISO9001 Quality Management System Certificate, ISO18001 Occupation Health and Safety Management System Certification, CE Certificate and GOST Certificate. As the approved "Rough terrain crane Engineering Technology Research Center" by the Department of Science and Technology of Jiangsu Province, XJCM has the long-term research cooperation relationship with Jilin University. XJCM has 56 patents at present, including 15 patents for invention and 41 patents for utility models. XJCM main products include RT series of rough terrain crane, QY series of truck crane, DG series of multifunction pipelayer, JFYT series of rapid traveling self-erecting intelligent tower crane, self-loading & self-unloading intelligent environment protecting truck and key parts of construction machinery, etc. Thereinto, DG series of multifunction pipelayer and self-loading & self-unloading intelligent environment protecting truck get the global patent for invention, and JFYT series of rapid traveling self-erecting intelligent tower crane is the pioneer product in China.

The self-developed RT series of rough terrain cranes have been identified as "high-tech products" by Department of science and technology of Jiangsu Province and have been involved in "National Torch Project" by the national Ministry of science and technology. It adopts the computer control technology, CAN bus technology, hydraulic pilot proportional control technology, electric control shift stepless speed change technology, four wheels steering locating and detection technology and security image monitoring system, etc. So, it is a kind of high technology integrated product of mechanic, electronic and instrument. It adopts the self-produced off-road chassis, imported axles and imported gearbox. It has the features of four-wheel drive, synchronous steering, high dynamic and high trafficability characteristic. It adopts fully hydraulic configuration and can realize the stepless speed change, crab steering and traveling with load. It is suitable for the outdoor complex road conditions construction, for example, mountain, mine, etc., and narrow site operating, for example, port, freight yards, etc. It can satisfy the different and special hoisting requirement for different industries and different users.

XJCM was founded in 2002. The register capital is \$ 45 million, occupying more than 200 thousand square meters area. At present, more than 100 thousand square meters of standard industrial plant, more than 9000 square meters of Science and technology R&D building and more than 7000 square meters of International trade building are available in XJCM. Until now, XJCM has advanced machining equipment and detecting equipment, including flame cutting machine, laser cutting machine, fine plasma cutting machine, large shearing machine, large leveling machine, large press machine, 2500ton model of large scale CNC bending machine, digital display horizontal double side boring and milling machine, precision machining equipment, Lincoln welding machine, standard spray paint line, coordinate measuring machine, welding flaw detector, etc. XJCM has production capacity more than 3000 sets of large construction machinery.

XJCM locates in Dapeng Industrial Park, Xuzhou City, Jiangsu province, China which is the city of China construction machinery, next to the 310 national highway and the west entry and exit of Xuzhou city belt expressway. XJCM has the superior parts purchasing conditions and convenient traffic location. At present, more than 95% of RT series of rough terrain crane, as the main product of XJCM, is mainly exported to more than 40 countries and regions, like Africa, South America, Middle East, West Africa, East and South Asia, CIS and so on.

以匠心铸品质·以责任赢诚信

Crafting quality with craftsmanship. Winning Integrity with Responsibility





卓越的使用性能

EXCELLENT PERFORMANCE



吊车行驶作业

具备汽车吊和履带吊的起重作业性能，可以不打支腿作业及吊重行驶作业。

Traveling with load

It has the same Lifting performance with truck crane and crawler crane: with outrigger operating, without operating and traveling with load.



爬坡能力强

最大爬坡度30°

Strong gradeability

Max.gradeability: 30°



卓越的越野性能和动力性能

采用传统的四轮驱动技术，液力变距器技术和大传动比技术提高低速行驶时动力性能。

Excellent off road traveling and good dynamic performance

Adopting traditional four-wheel drive technology, hydraulic torque converter technology and large transmission ratio technology for improving the dynamic performance when low speed travel.



电控四轮转向技术

多种转向模式，及双向行驶提高车辆的行驶机动性，因此转弯半径小，可在狭窄场所作业。

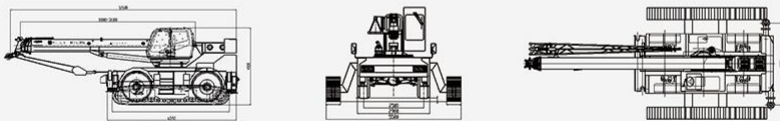
Electric control four wheel steering technology

Varies of steering types, two way driving for good mobility, Small turning radius for narrow site operating.



RTL35越野履带吊

RTL35 OFF-ROAD CRAWLER CRANE



RT	类别 Category	项目 Item	单位 unit	RT10	RT25	RT30	
行驶状态 主要参数表 Main technical parameters table in travel state	尺寸参数 Outline Dimension Parameters	整机全长 Overall length	mm	10121	12000	11680	
		整机全宽 Overall width	mm	2400	2750	3080	
		整机全高 Overall height	mm	3100	3650	3690	
		轴距 Axle base	mm	3350	3600	3600	
		轮距 Wheel base	mm	1970	2250	2560	
	重量参数 Weight Parameters	行驶状态整机自重 Overall weight in driving state		Kg	12500	26400	27700
		轴荷 Axle load	前轴 Front axle	Kg	6170	13050	14280
			后轴 Rear axle	Kg	6330	13350	13420
	行驶参数 Travel Parameters	发动机额定功率 Engine rated output		Kw/(r/min)	92/2200	140/2200	169/2500
		最高行驶速度 Max.Travel speed		Km/h	50	40	40
最小转弯半径 Min.turning radius		m	4.6	4.8	5.1		
起重作业状态 主要参数表 Main Technical Parameters Table in Lifting State	主要性能 Main Performance Parameters	最大额定总起重量 Max. total rated lifting load		t	10	25	30
		额定工作幅度 Min. rated working radius		m	3	3	3
		支腿距离 Outrigger span	纵向 Longitudinal	m	5.45	5.83	6.08
			横向 Lateral	m	5	5.6	6.5
		起重臂长度 Boom length	基本臂 Base boom	m	7.9	9.9	9.18
			最长主臂 Fully-extended boom	m	24.6	31.2	27.78
			最长主臂+副臂 Fully-extended boom+Jib	m	-	31.2+7.3	27.78+7.32
	主要配置 Main configuration	发动机Engine			东康 Dongfeng Cummins	潍柴 Weichai	东康 Dongfeng Cummins
		车桥Axle			泰安路通 Lutong	美驰 Meritor	凯斯兰 Kessler

RT	类别 Category	项目 Item	单位 unit	RT35	RT50	RT55	
行驶状态 主要参数表 Main technical parameters table in travel state	尺寸参数 Outline Dimension Parameters	整机全长 Overall length	mm	12600	12880	12110	
		整机全宽 Overall width	mm	3060	3080	3397	
		整机全高 Overall height	mm	3780	3625	3730	
		轴距 Axle base	mm	3950	3950	4650	
		轮距 Wheel base	mm	2560	2500	2652	
	重量参数 Weight Parameters	行驶状态整机自重 Overall weight in driving state		Kg	28980	36140	43000
		轴荷 Axle load	前轴 Front axle	Kg	15615	19220	20710
			后轴 Rear axle	Kg	13365	16920	22290
	行驶参数 Travel Parameters	发动机额定功率 Engine rated output		Kw/(r/min)	169/2500	198/2500	198/2500
		最高行驶速度 Max.Travel speed		Km/h	40	40	35
最小转弯半径 Min.turning radius		m	5.1	6	7.35		
起重作业状态 主要参数表 Main Technical Parameters Table in Lifting State	主要性能 Main Performance Parameters	最大额定总起重量 Max. total rated lifting load		t	35	50	55
		额定工作幅度 Min. rated working radius		m	3	3	3
		支腿距离 Outrigger span	纵向 Longitudinal	m	6.4	6.75	7.7
			横向 Lateral	m	6.5	7.1	7.6
		起重臂长度 Boom length	基本臂 Base boom	m	10	10.25	9.6
			最长主臂 Fully-extended boom	m	31.2	32	35
			最长主臂+副臂 Fully-extended boom+Jib	m	31.2+7.3	32+15	35+15
	主要配置 Main configuration	发动机Engine			东康 Dongfeng Cummins	东康 Dongfeng Cummins	东康 Dongfeng Cummins
		车桥Axle			凯斯兰 Kessler	凯斯兰 Kessler	凯斯兰 Kessler

RT	类别 Category	项目 Item	单位 unit	RT60	RT70	RT75	
行驶状态 主要参数表 Main technical parameters table in travel state	尺寸参数 Outline Dimension Parameters	整机全长 Overall length	mm	14440	13400	13085	
		整机全宽 Overall width	mm	3350	3380	3350	
		整机全高 Overall height	mm	4040	3870	4000	
		轴距 Axle base	mm	4650	4650	4650	
		轮距 Wheel base	mm	2648	2350	2520	
	重量参数 Weight Parameters	行驶状态整机自重 Overall weight in driving state		Kg	46820	48800	48800
		轴荷 Axle load	前轴 Front axle	Kg	22530	22560	22560
			后轴 Rear axle	Kg	24290	26240	26240
	行驶参数 Travel Parameters	发动机额定功率 Engine rated output		Kw/(r/min)	198/2500	198/2200	198/2500
		最高行驶速度 Max.Travel speed		Km/h	35	40	35
最小转弯半径 Min.turning radius		m	6.5	6.5	6.5		
起重作业状态 主要参数表 Main Technical Parameters Table in Lifting State	主要性能 Main Performance Parameters	最大额定总起重量 Max. total rated lifting load		t	60	70	75
		额定工作幅度 Min. rated working radius		m	3	3	3
		支腿距离 Outrigger span	纵向 Longitudinal	m	7.7	7.75	7.75
			横向 Lateral	m	7.6	7.6	7.6
		起重臂长度 Boom length	基本臂 Base boom	m	11.6	10.2	10.2
			最长主臂 Fully-extended boom	m	43.6	37	37
	最长主臂+副臂 Fully-extended boom+Jib		m	43.6+18.5	37+15	37+16	
	主要配置 Main configuration	发动机Engine			东康 Dongfeng Cummins	东康 Dongfeng Cummins	东康 Dongfeng Cummins
		车桥Axle			凯斯兰 Kessler	凯斯兰 Kessler	凯斯兰 Kessler

RT	类别 Category	项目 Item	单位 unit	RT80	RT100	RT130	RT160	
行驶状态 主要参数表 Main technical parameters table in travel state	尺寸参数 Outline Dimension Parameters	整机全长 Overall length	mm	15000	15100	17350	17350	
		整机全宽 Overall width	mm	3350	3350	3800	3800	
		整机全高 Overall height	mm	4000	4000	4160	4160	
		轴距 Axle base	mm	4650	4650	4900	4900	
		轮距 Wheel base	mm	2520	2520	2955	2955	
	重量参数 Weight Parameters	行驶状态整机自重 Overall weight in driving state		Kg	55670	56000	88660	88700
		轴荷 Axle load	前轴 Front axle	Kg	27310	23800	41740	41740
			后轴 Rear axle	Kg	28360	26000	46920	46960
		行驶参数 Travel Parameters	发动机额定功率 Engine rated output		Kw/(r/min)	228/2100	228/2100	242/2100
	最高行驶速度 Max.Travel speed		Km/h	35	35	35	30	
最小转弯半径 Min.turning radius			m	8	8	9.075	9	
起重作业状态 主要参数表 Main Technical Parameters Table in Lifting State	主要性能 Main Performance Parameters	最大额定总起重量 Max. total rated lifting load		t	75	100	130	160
		额定工作幅度 Min. rated working radius		m	3	3	3	2.5
		支腿距离 Outrigger span	纵向 Longitudinal	m	7.75	7.75	8.7	8.7
			横向 Lateral	m	7.7	7.7	8.35	8.35
		起重臂长度 Boom length	基本臂 Base boom	m	12	12	13.2	13.7
			最长主臂 Fully-extended boom	m	46	46	50	50
	最长主臂+副臂 Fully-extended boom+Jib		m	46+18.5	46+18.5	50+22.5	50+22.5	
	主要配置 Main configuration	发动机Engine			东康 Dongfeng Cummins	东康 Dongfeng Cummins	东康 Dongfeng Cummins	
		车桥Axle			凯斯兰 Kessler	凯斯兰 Kessler	凯斯兰 Kessler	

RT ROUGH TERRAIN CRANE



越野轮胎起重机

越野轮胎起重机具备汽车吊和履带吊的起重作业性能，可以不打支腿作业及吊重行驶作业。多种转向模式，及双向行驶提高车辆的行驶机动性，因此转弯半径小，可在狭窄场所作业。

The rough terrain crane has the lifting performance of truck crane and crawler crane, and can operate without supporting leg and lifting weight. Multiple steering modes and two-way driving improve vehicle mobility, so the turning radius is small and can be operated in narrow places.