

银华机械

团结 | 拼搏 | 创新 | 奉献



厦门银华机械有限公司

Xiamen Yinhua Machinery Co., Ltd

地址:中国厦门市集美区灌北工业区银华路1号

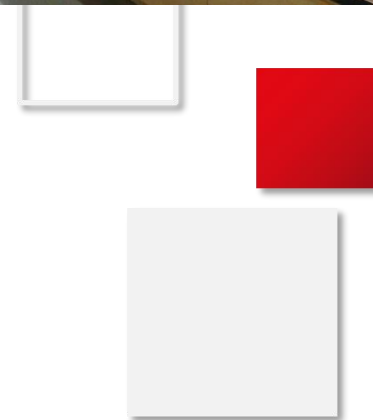
Address: No.1 Yinhua Road, Guanbei Industrial Zone, Jimei District, Xiamen City, China

电话:86-592-7033884 Telephone:86-592-7033884

HTTP: //www.yinhua.com

E-mail: yinhuayy@yinhua.com

zhiping.zhu@ccregroup.com



目录

■ contents



公司情况简介 Company Profile



产品介绍

公司介绍 Company Profile



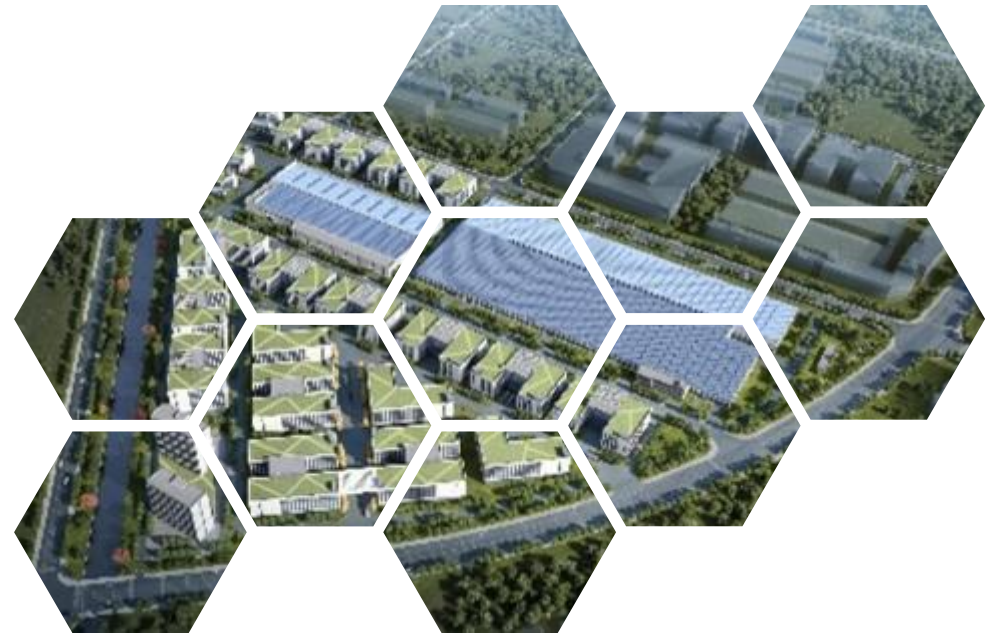
- 厦门银华机械有限公司创建于1971年，专注液压油缸生产40年，是国内主要液压油缸生产基地之一。中国厦门市集美区灌北工业区银华路1号，总占地面积26.9万平方米，现拥有职工298人，其中生产一线职工173人，专业技术、关键岗位人才92人，年产各类油缸40万支。拥有旗下四川长江液压件有限责任公司,北京2008奥运会主火炬液压系统主要供应商。
- Xiamen Yinhua Machinery Co.,Ltd.established in 1971,has been dedicated to the production of hydraulic cylinders for more than 40 years and is one of the major hydraulic cylinder manufacturing bases in China. No.1 Yinhua Road, Guanbei Industrial Zone, Jimei District, Xiamen City, China,with a total area of 269,000 square metres.At present,we have a total of 298 employees,including 173 production line workers,92 professional technicians and key position holders,with an annual output of 400,000 units of various types of hydraulic cylinders.We also have a subordinate enterprise Sichuan Changjiang Hydraulic Parts Co.,Ltd,which was the main supplier of the main torch hydraulic system for the Beijing 2008 Olympic Games.



公司介绍

Company Profile

- 公司主要生产液压缸、泵、阀产品广泛应用于轨道交通设备、环卫设备、高空作业平台、工程机械、特种车辆、机场港口设备等领域。
- Our mainly produces hydraulic cylinders, pumps, valves and other products. Widely used in rail transport equipmentsanitation equipment, aerial working machinery, construction machinery, special vehicles, airport and port equipment andother fields.



制造能力
manufacturing ability



卧式数控车削中心
Horizontal CNC turning center



卧式加工中心
Horizontal machining center



立式加工中心
Vertical machining center



自动静电喷涂生产线
Automatic electrostatic
spraying line



车铣复合中心
Turning and milling Center



卧式刮削滚光床
Horizontal skiving and roller
burnishing machine



机器人系统焊接工作站
Robotic system welding
workstation



油缸装配专用设备
Specialized equipment for
cylinder assembly



数控自动校直机
CNC automatic straightening
sachine



连续驱动摩擦焊机
Continuous drive friction
welding machine

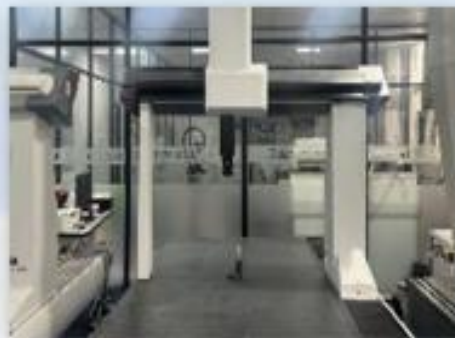
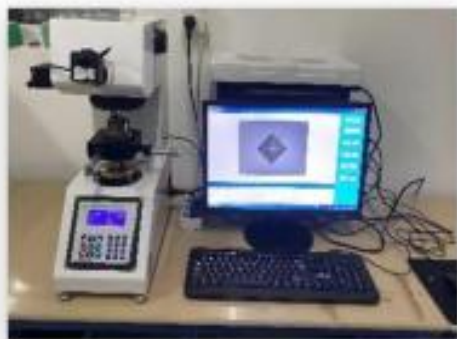


八头自动通过式抛光设备
Eight-head automatic pass-through
polishing equipment



自动硬铬镀铬生产线
Automatic hard Chrome
plating line

质量保证 Quality guarantee



隧道掘进机液压油缸 Hydraulic cylinders for tunnel boring machines

- **具有高压，大缸径，长时间连续稳定工作的特点**
 - ✦ It features high pressure, large cylinder diameter, and the capability to maintain stable operation for extended periods of time.
- **具备耐腐蚀，良好的保压以及防水性能**
 - ✦ It possesses corrosion resistance, excellent pressure retention, and waterproof performance.
- **内置位移传感器，能及时反馈行程量**
 - ✦ Built-in displacement sensors can promptly provide feedback on the travel amount.
- **能提供250吨以上的推力，关键零件采用高强度合金材料，能够保证高强度作业下的使用寿命和安全性**
 - ✦ It can provide a thrust force of over 250 tons, and the use of high-strength alloy materials for key components ensures durability and safety under high-intensity operations.
- **推进油缸具备承受不低于3吨侧向载荷的能力。同时内置位移传感器，能通过反馈行程来控制多个油缸的同步性**
 - ✦ the thrust cylinder is capable of enduring a lateral load of no less than 3 tons. Additionally, it is equipped with a built-in displacement sensor that can control the synchronization of multiple cylinders through feedback of the stroke.
- **工作压力、尺寸规格、安装方式等等可以根据客户的需求进行定制化的设计**
 - ✦ Working pressure, size specifications, installation methods, and other parameters can be customized according to the customer's needs.



油缸介绍

Introduction to oil cylinders



推进油缸
Thrust Cylinder

功能 Function

使盾构机前进
Propel the shield tunneling machine forward

规格 Specification

缸径 Bore Diameter 140mm ~ 550mm
杆径 Rod Diameter 120mm ~ 420mm
行程 Stroke 900mm ~ 4100mm

压力 Pressure

可达35MPa
Up to 35 MPa
特殊要求的最高可达到45MPa
For special requirements, the maximum can reach up to 45 MPa



铰接油缸
Articulated cylinder

功能 Function

主动铰接：刀盘转向 / 配合换刀
Active articulation: cutterhead rotation for tool change
被动铰接：拖动盾尾向前
Passive articulation: dragging the tail shield forward

规格 Specification

缸径 Bore diameter 125mm ~ 550mm
杆径 Rod Diameter 70mm ~ 370mm
行程 Stroke 140mm ~ 1200mm

压力 Pressure

可达35MPa
Up to 35 MPa



提升油缸
Lift cylinder

功能 Function

运送管片到指定位置拼装成环
Transporting the segments to the designated position for assembly into a ring

规格 Specification

一般为两级结构
Generally consists of a two-stage structure
由内部小油缸提供推力和拉力
The thrust and tension are provided by the internal small cylinders
小活塞杆固定
The small piston rod is fixed
大活塞杆伸缩时可承受很大侧向力
The large piston rod can withstand significant lateral forces during extension and retraction

挖掘机油缸 Excavator cylinder

- **其结构简单，紧凑，寿命长，大多为双作用单活塞杆式液压缸，具有安装连接形式多样等特点**
 - ✦ Its simple and compact structure, long service life, and mostly double-acting single-rod hydraulic cylinders, feature various installation and connection forms.
- **设计耐温范围广(-35°C~+120°C)，并且能提供更高或更低温度的油缸定制服务**
 - ✦ The design has a wide temperature resistance range (-35°C to +120°C), and can provide customized services for cylinders that operate at higher or lower temperatures.
- **提供多种表面防腐处理解决方案: Ni/Cr电镀、喷陶瓷、激光熔覆、QPQ、镀锌镍等**
 - ✦ Offering a variety of surface anti-corrosion treatment solutions: Ni/Cr plating, ceramic spraying, laser cladding, OPO, zinc-nickel plating, and more.
- **成熟的缓冲设计使得铲斗在挖掘作业时减少油缸冲击且不会减小挖掘力及影响工作效率**
 - ✦ The sophisticated buffering design enables the bucket to reduce cylinder impact during excavation without reducing excavation force or affecting work efficiency.
- **工作压力、尺寸规格、安装方式等等可以根据客户的需求进行定制化的设计**
 - ✦ Working pressure, size specifications, installation methods, etc. can be customized according to customer needs.



油缸介绍

Introduction to oil cylinders



铲斗油缸
Bucket cylinder

功能 Function

控制挖斗的动作
Controlling the movements of the excavating

规格 Specification

缸径 Bore diameter	200mm ~ 360mm
杆径 Rod diameter	140mm ~ 260mm
行程 Stroke	≤2500mm

推力 Thrust

最大3560.8KN
(缸径420mm/压力35MPa)
Maximum 3560.8KN
(bore diameter 420mm@Working pressure 35MPa)



动臂油缸
Boom cylinder

功能 Function

控制大臂的抬升动作
Controlling the lifting movement of the boom

规格 Specification

缸径 Bore diameter	200mm ~ 420mm
杆径 Rod diameter	140mm ~ 300mm
行程 Stroke	≤3500mm

推力 Thrust

最大4846.6KN
(缸径420mm/压力35MPa)
Maximum 4846.6KN
(Bore diameter 420mm@Working pressure 35MPa)



斗杆油缸
Bucket arm cylinder

功能 Function

控制小臂的动作
Controlling the movements of the stick

规格 Specification

缸径 Bore diameter	210mm ~ 360mm
杆径 Rod diameter	145mm ~ 260mm
行程 Stroke	≤2600mm

推力 Thrust

最大3560.8KN
(缸径360mm/压力35MPa)
Maximum 3560.8KN
(Bore diameter 360mm@Working pressure 35MPa)

高空作业车油缸
Aerial working platform cylinder



油缸介绍

Introduction to oil cylinders



变幅油缸
Luffing cylinder

功能 Function

实现伸臂的上下俯仰转动，是高空作业车的主要动力
To achieve the upward and downward tilt movement of the boom arm is the main power source for the aerial working platform

规格 Specification

缸径 Bore diameter	50mm ~ 350mm
杆径 Rod Diameter	30mm ~ 300mm
行程 Stroke	≤3000mm

压力 Pressure

30MPa (最大工作压力)
30MPa (maximum working pressure)



伸缩油缸
Telescopic Cylinder

功能 Function

实现臂架的直线伸缩运动
To achieve linear telescopic movement of the boom

规格 Specification

缸径 Bore diameter	45mm ~ 200mm
杆径 Rod Diameter	32mm ~ 180mm
行程 Stroke	≤15000mm

压力 Pressure

30MPa (最大工作压力)
30MPa (maximum working pressure)



支腿油缸
Outrigger cylinder

功能 Function

在高空作业车工作时，支撑起整个设备的重量
The aerial work platform supports the full weight of the equipment during operation

规格 Specification

缸径 Bore diameter	45mm ~ 200mm
杆径 Rod Diameter	30mm ~ 180mm
行程 Stroke	≤2000mm

压力 Pressure

30MPa (最大工作压力)
30MPa (maximum working pressure)



调平油缸
Leveling cylinder

功能 Function

调节高空作业车平台的角
Adjusting the platform angle of the aerial work vehicle

规格 Specification

缸径 Bore diameter	85mm ~ 200mm
杆径 Rod Diameter	50mm ~ 100mm
行程 Stroke	≤300mm

压力 Pressure

30MPa (最大工作压力)
30MPa (maximum working pressure)



转向油缸
Steering cylinder

功能 Function

用于高空作业车底盘轮胎的转向系统
Steering system for the tires of an aerial work vehicle

规格 Specification

缸径 Bore diameter	63mm ~ 200mm
杆径 Rod Diameter	36mm ~ 140mm
行程 stroke	≤1000mm

压力 Pressure

30MPa (最大工作压力)
30MPa (maximum working pressure)

硫化机油缸

Sulfurizing press cylinder

- 紧凑的结构设计，高强度的材料使用以及特殊的热处理、焊接工艺确保油缸在高压、重载荷下具有极高的疲劳耐久寿命
- Compact structural design, the use of high-strength materials, as well as special heat treatment and welding processes, ensure the cylinder's exceptional fatigue durability and lifespan under high pressure and heavy loads.
- 采用特殊材质的低摩擦密封系统设计，满足客户低启动压力、低油膜、快速响应的要求
- With the design of a low-friction sealing system utilizing special materials, the requirements of customers for low starting pressure, thin oil film, and rapid response are met.
- 设计耐温范围广(-30°C~+120°C)，并且能提供更高或更低温度的油缸定制服务
- ✦ The design features a wide temperature resistance range (-30 to +200°C), and we offer customized cylinder services for even higher or lower temperatures.



油缸介绍

Introduction to oil cylinders



翻转油缸
Flip Cylinder

功能 Function

实现轮胎的翻转动作
To achieve the flipping action of the tire

规格 Specification

缸径 Bore diameter	50mm
杆径 Rod Diameter	28mm
行程 Stroke	310mm

推力 Thrust

最大384KN
(缸径140mm/压力25MPa)
Maximum thrust 384KN
(Bore diameter 140mm @Work pressure 25MPa)



活络模油缸
Movable Mold Cylinder

功能 Function

驱动多片活络模具合并组合成完整模具
Drive the multi-piece flexible molds to combine and form a complete mold

规格 Specification

缸径 Bore diameter	90mm ~ 220mm
杆径 Rod Diameter	50mm ~ 140mm
行程 Stroke	≤900mm

推力 Thrust

最大798KN
(缸径220mm/压力21MPa)
Maximum 798KN
(Bore diameter 220mm@Working pressure 21MPa)



开合模油缸
Clamping/Unclamping Cylinder

功能 Function

控制模具的打开与闭合
Control the opening and closing of the mold

规格 Specification

缸径 Bore diameter	50mm ~ 140mm
杆径 Rod diameter	28mm ~ 100mm
行程 Stroke	≤4000mm

推力 Thrust

最大384KN
(缸径140mm/压力25MPa)
Maximum 384KN
(Bore diameter 140mm@Working pressure 25MPa)

环卫设备油缸

Hydraulic cylinder for sanitation equipment

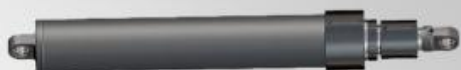
➤ 广泛应用于垃圾压缩车、垃圾转运车、垃圾压缩站、扫路车、清洗洒水车等环境工程领域。油缸油口油路特殊设计。方便主机安装，特殊的电镀及喷涂工艺使油缸具有很强的防腐能力，采用特殊防尘圈可有效防止污染物进入油缸，保证系统清洁度，延长使用寿命。解决方案包括标准化和定制化油缸，以满足客户的不同需求。

✦ It is widely used in the field of environmental engineering, such as garbage compression vehicles, garbage transfer vehicles, garbage compression stations, street sweepers, cleaning and watering vehicles, etc. The oil port and oil circuit of the cylinder are specially designed to facilitate the installation of the main machine. Special electroplating and spraying processes make the cylinder have strong anti-corrosion ability. The use of special dust-proof rings can effectively prevent pollutants from entering the cylinder, ensuring system cleanliness and extending service life. Solutions include standardized and customized cylinders to meet the different needs of customers.



油缸介绍

Introduction to oil cylinders



推铲油缸
Push blade cylinder

功能 Function

用于推挤压缩垃圾
Used for pushing and compressing garbage

规格 Specification

缸径 Bore diameter	90mm ~ 300mm
杆径 Rod Diameter	70mm ~ 280mm
行程 Stroke	≤ 10000mm

推力 Thrust

最大384KN (压力25MPa)
Maximum 384KN (@Working pressure 25MPa)



举升油缸
Lifting cylinder

功能 Function

用于举起压缩后尾板
For lifting the compressed rear panel (or tailgate) after compression

规格 Specification

缸径 Bore diameter	50mm ~ 120mm
杆径 Rod Diameter	25mm ~ 90mm
行程 stroke	≤ 900mm

推力 Thrust

最大384KN (压力25MPa)
Maximum 384KN (@working pressure 25MPa)



刮板油缸
Blade cylinder

功能 Function

用于刮干净后槽需要压缩的垃圾
For scraping and compressing the garbage that needs to be disposed of in the rear slot

规格 Specification

缸径 Bore diameter	50mm ~ 120mm
杆径 Rod Diameter	25mm ~ 90mm
行程 Stroke	≤ 600mm

推力 Thrust

最大384KN (压力25MPa)
Maximum 384KN (@working pressure 25MPa)

齿轮泵 gear pump

- 本公司泵采用高强度铝合金挤压成形或耐磨球墨铸铁泵体。前盖、泵体、后盖，并采用了可补偿轴向间隙的浮动侧板和高承载能力的DU轴承结构。具有压力高、转速范围宽、容积效率高、工作可靠、重量轻、使用寿命长等特点。并可组成单泵、双联泵、三连泵、四连泵，供主机任意选用。

- Our pumps are made of high-strength aluminium alloy profiles or wear-resistant ductile iron, including front covers, pumpbodies and back covers, in addition, we use floating side plates and high load capacity DU bearing construction to compensate foaxial clearance. These designs give our pumps the advantages of high pressure, wide speed range, high volumetric efficiency, reliable operation, low weight and long service life, in addition, our pumps can be used individually or formed into double, triple or quadruple pumps to meet the needs of different hosts.



CBK1系列高压齿轮泵

CBK1 series high-pressure gear pump

规格: CBK1系列

Specification: CBK1 series

额定压力: 200~250 bar

Rated pressure: 200~250 bar

峰值压力: 250~400 bar

Peak pressure: 250~400 bar

转速范围600~3000r/min, 排量4~25ml/r

Speed range: 600~3000 r/min, Displacement: 4~25 ml/r



GPC4系列齿轮泵

GPC4 series gear pump

规格: GPC4系列

Specification: GPC4 series

额定压力: 200~250 bar

Rated pressure: 200~250 bar

峰值压力: 250~400 bar

Peak pressure: 250~400 bar

转速范围700~3000r/min, 排量20~80ml/r

Speed range: 700~3000 r/min, Displacement: 20~80 ml/r



CBY系列高压齿轮泵

CBY series high-pressure gear pump

规格: CBY齿轮泵系列 (CBY2、CBY3、CBY4)

Specification: CBY gear pump series (CBY2, CBY3, CBY4)

额定压力: 200~250 bar

Rated pressure: 200~250 bar

峰值压力: 250~400 bar

Peak pressure: 250~400 bar

转速范围600~3000r/min, 排量10~200ml/r

Speed range: 600~3000 r/min, Displacement: 10~200 ml/r



GPL系列高压齿轮泵

GPL series high-pressure gear pump

规格: GPL齿轮泵系列 (GPL3、GPL5)

Specification: GPL gear pump series (GPL3, GPL5)

额定压力: 200~250 bar

Rated pressure: 200~250 bar

峰值压力: 250~400 bar

Peak pressure: 250~400 bar

转速范围600~2500r/min, 排量25~250ml/r

Speed Range: 600~2500 r/min, Displacement: 25~250 ml/r



CBJ系列高压齿轮泵

CBJ series high-pressure gear pump

规格: CBJ齿轮泵系列

Specification: CBJ gear pump series

额定压力: 150~200 bar

Rated pressure: 150~200 bar

峰值压力: 200~300 bar

Peak pressure: 200~300 bar

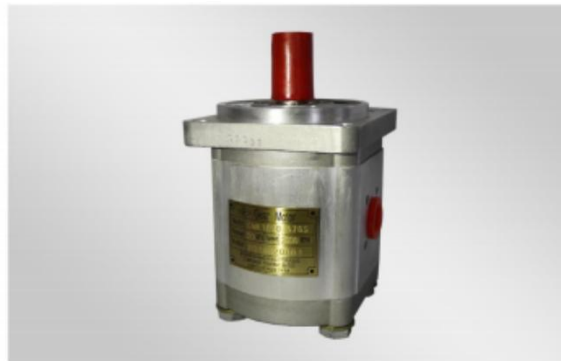
转速范围600~2500r/min, 排量25~80ml/r

Speed range: 600~2500 r/min, Displacement: 25~80 ml/r

齿轮马达 gear pump

- 本公司系列齿轮马达采用了高强度铝合金壳体，浮动式轴向补偿结构，承载能力高的DU轴承结构。具有排量规格多、结构简单、体积小、重量轻、工作可靠等特点。可单向旋转，也可双向旋转，单向旋转时还可以带安全阀，可广泛用于工程机械、矿山机械、起重运输机械、农业机械等以及中小型液压系统。

- ✦ Our series gear motors are made of high-strength aluminium alloy housing and equipped with floating axial compensation structure and DU bearings with high load carrying capacity, The products are characterised by a wide range of displacement specifications, simple structure, compactness and lightness, and high reliability, They can achieve unidirectional and bidirectional rotation, and can be equipped with safety valves for unidirectional rotation. Wide range construction machinery, mining machinery, lifting and transport machinery, agricultural machinery and small and medium-sized hydraulic systems and other fields



CMK1系列齿轮马达
CMK1 series gear motor

规格：CMK1系列齿轮马达

Specification: CMK1 series gear motor

额定压力：100~160 bar

Rated pressure: 100~160 bar

峰值压力：150~250 bar

Peak pressure: 150~250 bar

转速范围600~3000r/min，排量4~25ml/r

Speed Range: 600~3000 r/min, Displacement: 4~25 ml/r



CMG系列齿轮马达
CMG series gear motor

规格：CMG齿轮泵系列 (CMG2、CMG3)

Specification: CMG gear motor series (CMG2, CMG3)

额定压力：100~160 bar

Rated pressure: 100~160 bar

峰值压力：150~250 bar

Peak pressure: 150~250 bar

转速范围600~2000r/min，排量25~200ml/r

Speed range: 600~2000 r/min, Displacement: 25~200 ml/r

多路换向阀 Multi-directional control valve

- 适用于开式回路，开中心结构
- ✦ Applicable to open circuit and open-center structure
- 操作性好，效率高
- ✦ It is easy to operate and highly efficient
- 整体布置，重量轻，结构紧凑
- ✦ Integrated layout, lightweight, and compact structure
- 控制精确，微动性好
- ✦ Precise control, excellent micro-movement performance
- 压损小，更节能
- ✦ Low pressure loss, more energy efficient



ZTF系列整体式多路阀

ZTF series integrated multi-directional valve

规格: ZTF-L10系列

Specification: ZTF-L10 Series

额定流量 (L/min): 40

Rated flow(L/min): 40

最高压力 (bar): 250

Maximum pressure(bar): 250



DC系列多路换向阀

DC series multi-directional control valve

规格: DC系列 (DC20、DC25、DC32)

Specification: DC series (DC20, DC25, DC32)

额定流量 (L/min): 100/200/300

Rated flow(L/min): 100/200/300

最高压力 (bar): 315/315/315

Maximum pressure(bar): 315/315/315



ZL系列多路换向阀

ZL series multi-directional control valve

规格: ZL系列 (ZL15、ZL20、ZL25)

Specification: ZL series (ZL15, ZL20, ZL25)

额定流量 (L/min): 63/100/160

Rated flow(L/min): 63/100/160

最高压力 (bar): 315/315/315

Maximum pressure(bar): 315/315/315



LBF系列流量比例分配负荷传感多路阀

LBF series flow rate proportional distribution load-sensing multi-directional valve

规格: LBF系列 (LBF14、LBF22、LBF25)

Specification: LBF series (LBF14, LBF22, LBF25)

额定流量 (L/min): 175/400/500

Rated flow(L/min): 175/400/500

最高压力 (bar): 315/315/315

Maximum pressure(bar): 315/315/315

多路换向阀

Multi-directional control valve

➤ **LBFD系列电控比例负荷传感多路换向阀主要用于25~100吨起重机、6~30吨挖掘机、50~250吨履带吊、旋挖钻机、高空作用车、船用吊机等机械。**

✦ The LBFD series electrically controlled proportional load-sensing multi-directional control valve is mainly used in 25-100 ton cranes, 6-30 ton excavators, 50-250 ton crawler cranes, rotary drilling rigs, aerial work vehicles, marine cranes, and other machinery

➤ **OF28全负荷传感多路换向阀满足全液压起重机和80T以下履带吊的发展需求，特别是其优良的全负荷传感功能，使起重机的控制精度得以全面提高，用于起重机、履带吊、旋挖钻机和大型船舶机械等的液压系统中。**

✦ The OF28 full-load sensing multi-directional control valve meets the development needs of fully hydraulic cranes and crawler cranes (under 80 tons), especially with its excellent full-load sensing function, which comprehensively improves the control accuracy of cranes. It is used in hydraulic systems of cranes, crawler cranes, rotary drilling machines, large ship machinery, and other applications



LBFD系列电控比例负荷传感多路换向阀

LBFD series electrically controlled proportional load-sensing multi-directional control valve

规格: LBFD系列 (LBFD16、LBFD18)

Specification: LBFD series (LBFD16, LBFD18)

额定流量 (L/min): 200/250/

Rated flow(L/min): 200/250/

最高压力 (bar): 420/320/

Maximum pressure(bar): 420/320/



QF28全负荷传感多路换向阀

QF28 full-load sensor multi-directional control valve

规格: QF28系列

Specification: QF28 series

额定流量 (L/min): 400

Rated flow(L/min): 400

最高压力 (bar): 315

Maximum pressure(bar): 315

ITG
国贸控股

CCRE
海翼集团 CCRE GROUP

 **银华机械**
YINHUA MACHINERY

品质银华 共创未来

<http://www.yinhua.com>