

Introduction

Shandong Roadway Construction Machinery Manufacturing Co., Ltd. (The former name is Jining Roadway Machinery Manufacturing Co., Ltd.) is located in High-Tech Industrial Development Zone, Jining City, Shandong Province, China. The company covers 100,000m². It is a scientific-oriented and modernization enterprise with the right of the import and export. The company is specialized in producing small and medium and special construction machinery used in the area of highway, railway, water conservancy, etc. The products are up to 40 types, 20 types of which have applied for national patent. The 40 products are divided into five categories, which are Compacting equipments, Concrete construction equipments, Canal construction equipments, Cutting and breaking equipments and Lighting equipments. The company has advanced and complete CNC processing equipments, such as Tetra-shaft (Triple-shaft) processing centers, CNC boring machine, CNC, CNC drilling machine, Digital bending machine, CNC wire-cutting machine, CNC water-cutting machine and Welding robot, and 3D coordinate measuring, etc.

On the domestic market, the products have widely used in the national key projects in the area of highway, railway, water conservancy and municipal engineering etc. by China railway project group, China railway construction group, China water and electricity group, China building group, China communications construction group, etc. The customers are very satisfied with the products and services. The Canal construction equipments which are also exported abroad are successfully put into use in many construction sections of South-to-North water diversion projects. In markets abroad, ROADWAY brand becomes more and more famous, the products have passed CE certificate. Many mature and stable distributors have been developed in many countries, foreign trade is developing rapidly.

Shandong Roadway Construction Machinery Manufacturing Co., Ltd. always insists on the ideal of "Developing with the society" and the management principle of "Technology-led, Quality-first". The company always keeps pace with the times, aim at cutting-edge technologies of the fields of highway, railway, water conservancy and municipal engineering, develop technology innovation projects which are characterized by independent intellectual property right, and develop, design and produce according to "new, high and special" equipment requests of customers, so the company is developing fast.

Shandong Roadway Construction Machinery Manufacturing Co., Ltd. will continue spirit of developing "Customer, Staff, Innovation, Quality" in the brilliant development in future and work hard for building the base of investigation and manufacturing of construction machinery.



CNC Laser cutting machine



Fine plasma cutting machines



Digital bending machine and machine tools



Large CNC turret punch press



Robot welding



Processing center



CNC boring machine



CNC lathe machine



ROADWAY

路得威建筑工程机械导航

ROADWAY Construction Machinery Content

	Page
RWYL61S/61BS/51S/51CS Edge finish(Edge Cutting/Edge-Pressing) Vibratory roller.....	1
RWYL61T/61BT/51CT Dozer Blade Vibratory Roller.....	3
RWYL91/91N Ride-on Hydraulic Vibratory Roller.....	5
RWYL92/92N Ride-on Hydraulic Vibratory Roller.....	7
RWYL81B/81BC Combination Vibratory Roller.....	9
RWYL82/82B/82N/82BN Combination Vibratory Roller.....	11
RWYL83/83B/83N/83BN Combination Vibratory Roller.....	13
RWYL802/802N Tyre Roller.....	15
RWYL71/71B Ride-on Hydraulic Vibratory Roller.....	17
RWYL61/61B/61N Ride-on Hydraulic Vibratory Roller.....	19
RWYL51/51C/51BC Ride-on Hydraulic Vibratory Roller.....	21
RWYL42B/42BC Ride-on Vibratory Roller(Fully hydraulic).....	23
RWYL42A/42AC Ride-on Vibratory Roller(Hydraulic steering).....	25
RWYL41/41C Ride-on Vibratory Roller(Mechanical steering).....	27
RWYL35/35C Walk-behind Double Drum Road Roller(Fully hydraulic).....	29
RWYL34B/34BC Walk-behind Double Drum Road Roller(Hydraulic steering).....	31
RWYL33/33C/33S Walk-behind Double Drum Road Roller(Manual steering).....	33
RWYL32/32C/31B/31BC Walk-behind Double Drum Road Roller(Manual steering).....	35
RWYL21/21C/22/22C/11/11C Walk-behind Single Drum Road Roller.....	36
RWYL301/301C Remote Control Double Drum Roller.....	37
RWYL202/202C Remote Control Trench Roller.....	38
RWYL24/24C Walk-behind Single Drum Road Roller.....	39
RWYL102/102C Double Drum Vibratory Trench Roller.....	39
RWBH24/31B Plate Compactor (Single/return-direction).....	40
RWFD11 Dumper.....	41
RWFD31/RWFD31N Dumper.....	43
RWFD61 Dumper.....	45
RWJP31 Concrete Laser Screed (Boom type).....	47
RWJP32 Concrete Laser Screed (Boom type).....	49
RWJP33 Concrete Laser Screed (Boom type).....	51
RWJP14/15C Concrete Laser Screed.....	53
RWJP23/RWJP23B Concrete Laser Screed (Walk-behind fully hydraulic type).....	55
RWJP21/RWJP21B Concrete Laser Screed (Walk-behind electric type).....	56
RWJP20 Concrete Laser Screed (Walk-behind fully electric type).....	57
RWJP41 Concrete Laser Screed (Remote control fully hydraulic type).....	58
RWXC31 Ride-on scraper.....	59
RWQX11 High Pressure Washer.....	60
RWZP11 Automatic screeding machine.....	60
RWSL12/RWSL12B Spreader (Boom type).....	61
RWBL11 Concrete distributor.....	61
RWVG236B/236C Concrete Trowel.....	63
RWVG248C Hydraulic Concrete Trowel.....	66
RWXB21H Concrete Milling Machine.....	68
RWHM41 Automatic Curb Paver.....	69
RWHM31/31B/31C/31BC Automatic Curb Paver.....	71
RWHM11 Hand-push Curb Paver.....	73
RWHM21/21C Automatic Curb Paver.....	74
RWYQ21/22 Automatic Circular Cutting Machine.....	75
RWYQ11/11C Circular Cutting Machine.....	76
RWRG11/12 Soft cutting machine.....	77
RWJC11/11A/12/13 Dust Suppression Sprayer.....	78
RWQ711 Vacuum Excavator.....	79
RWQ5130TWXZZ Vacuum Excavator.....	81
RWYH21 Pothole Patcher.....	83
RWQ5126TY21 Asphalt Hot-recycling Paver.....	85
RWQ5250TFSZZ/911B Binding agent spreader.....	87
RWQ811 remote control tree trimmer.....	89

RWYL61S/61BS/51S/51CS

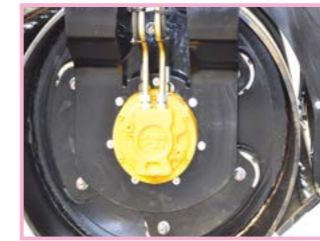
Edge Finish (Edge Cutting/Edge-Pressing) Vibratory Roller

It is used in the asphalt paving construction, save time, save asphalt and improve efficiency.

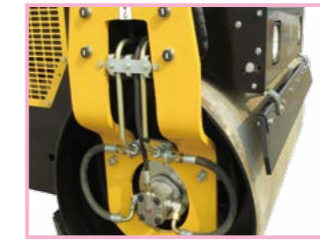
Fit for the country roads, tourist roads asphalt paving and compacting construction.



Imported hydraulic variable plunger pump, drives the machine stepless speed walking



Double import plunger motors drive the machine walking



Imported motor drives the steel drum vibrating. Single drum and double drum vibration can be switched freely



Extra-large plastic water tank, free from corrosion and convenient for the water-spraying



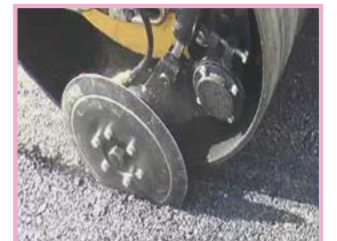
Double control levers with vibration button, makes the compaction of edge easy



Edge finish wheel



Edge-pressing wheel



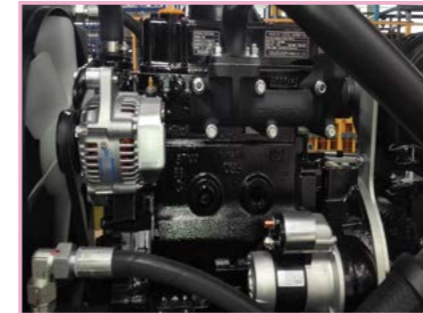
Edge cutting wheel

Type	RWYL61S	RWYL61BS	RWYL51S	RWYL51CS
Run				
Speed	0-12km/h		0-8km/h	
Steering radius	2600mm		1900mm	
Climbing capacity in theory	40%		30%	
Compaction				
Static load forward/back	125/115N/cm		70/75N/cm	80/85N/cm
Nominal amplitude	0.5mm		0.5mm	
Vibration frequency	60Hz		65HZ	
Exciting force	30KN	2 x 30KN	22kN	25KN
Water tank volume	200L		150L	
Engine				
Model	Yanmar 3TNV88		HONDA GX630	Yanmar 3TNV80
Type	Diesel, liquid-cooled, three cylinder		Gasoline, air-cooled, double cylinder	Diesel, liquid-cooled, three cylinder
Power	26.9kW/3000rpm		20hp/3200rpm	17.8KW/3000rpm
Fuel tank volume	40L		30L	30L
Lubricant L	6L		1.8L	2.7L
Fuel consumption	263g/kWh		313g/kWh	286g/kWh
Dimension				
Width of steel drum	1200mm		900mm	
Diameter of steel drum	700mm		560mm	
Tread	1760mm		1340mm	1520mm
Total length	2495mm		1980mm	2140mm
Total width	1310mm		980mm	980mm
Total height	2440mm		2250mm	2230mm
Packing size	2800x1450x2100mm		2180x1138x1820mm	2340x1138x1820mm
Weight				
Working weight	2900kg		1480kg	1700kg

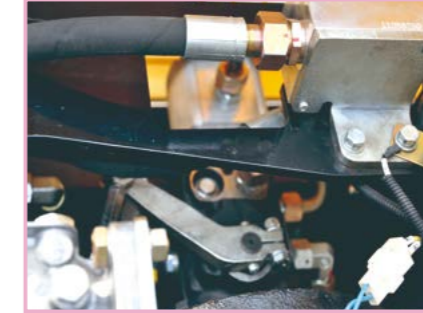
* For the customer's benefit, we will improve product design continuously, but pardon us for not notifying you.

RWYL61T/61BT/51CT Dozer Blade Vibratory Roller

It is used in the small area paving and leveling



Yanmar diesel engine



Imported Poclain hydraulic variable plunger pump, drives the machine stepless speed walking



Steel drum vibrating is driven by imported motor and button controlled



Integrated micro computer control plate, with operation, monitoring, alarm and other functions.



Double American brand cycloid hydraulic motors drive the machine walking



Plastic water tank free from corrosion and convenient for the water-spraying

Type	RWYL61T	RWYL61BT	RWYL51CT
Run			
Speed	0-12km/h		0-8km/h
Steering radius	2600mm		1900mm
Climbing capacity in theory	40%		30%
Compaction			
Static load forward/back	125/115N/cm		55/66N/cm
Nominal amplitude	0.5mm		0.5mm
Vibration frequency	60Hz		65Hz
Exciting force	30KN	2 × 30KN	25KN
Water tank volume	200L		150L
Engine			
Model	Yanmar 3TNV88		Yanmar 3TNV80
Type	Diesel, liquid-cooled, three cylinder		Diesel, liquid-cooled, three cylinder
Power	26.9kW/3000rpm		17.8KW/3000rpm
Fuel tank volume	40L		30L
Lubricant L	6L		2.2L
Fuel consumption	263g/kWh		281g/kWh
Dimension			
Width of steel drum	1200mm		900mm
Diameter of steel drum	700mm		560mm
Tread	1760mm		1520mm
Total length	2495mm		2140mm
Total width	1310mm		1150mm
Total height	2440mm		2230mm
Packing size	2800x1450x2100mm		2340x1138x1820mm
Weight			
Working weight	2900kg		1850kg

* For the customer's benefit, we will improve product design continuously, but pardon us for not notifying you.

RWYL91/91N Ride-on Hydraulic Vibratory Roller



The bulldozer blade and cam are optional



The smooth steel drum can be with cam



Yanmar diesel engine



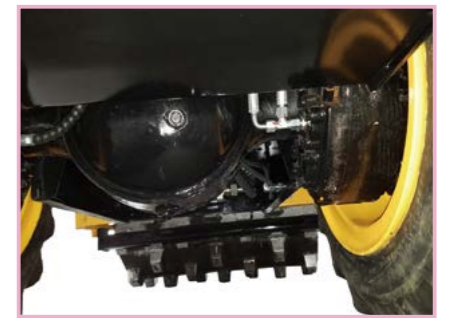
Poclairn plunger pump



Poclairn motor



Danfoss vibration motor



The drive axle is cast in one piece With hydraulic brake



Integrated micro computer control panel



The direction controller system with mid-lock function



Herringbone tyre suitable for backfill construction

Type	RWYL91	RWYL91N	Type	RWYL91	RWYL91N
Run			Fuel tank volume	50L	
Speed	0-9km/h		Lubricant L	6.5L	7L
Turning radius	2200mm		Fuel consumption	261g/kWh	268g/kWh
Climbing capacity in theory	55%		Dimension		
Compaction			Width of steel drum	1200mm	
Static load forward/back	130N/cm		Diameter of steel drum	1030mm	
Nominal amplitude	1.6/0.8mm		Tread	1804mm	
Vibration frequency	41Hz		Total length	3350mm	
Exciting force	85/43KN		Total width	1350mm	
Engine			Total height	2750mm	
Model	Yanmar 4TNV88	Quanchai	Packing size	3450x1550x2240mm	
Type	Diesel, liquid-cooled, four cylinder	Diesel, liquid-cooled, four cylinder	Weight		
Power	35kW/3000rpm	35kW/2500rpm	Working weight	3600kg/3800kg	3650kg/3850kg

※ For the customer's benefit, we will improve product design continuously, but pardon us for not notifying you.

RWYL92/92N Ride-on Hydraulic Vibratory Roller



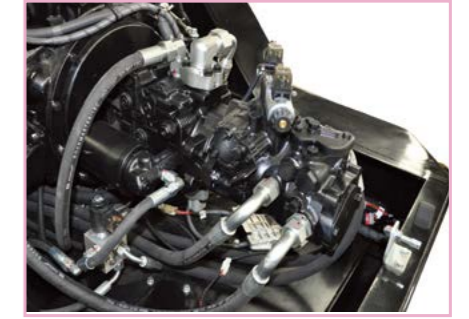
Cab, Air conditioner and Cam are optional



The smooth steel drum can be with cam



Yanmar turbocharged diesel engine



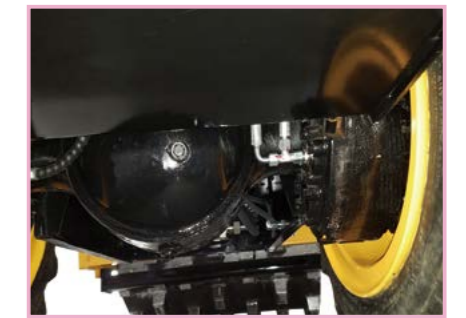
Danfoss plunger pump



Poclair driving motor



Danfoss vibration motor



The drive axle is cast in one piece With hydraulic brake



Integrated micro computer control panel



Walking reversing mechanism with a neutral locking function ensures safe start of the machine



The cover is fixed by door lock mechanism of the car, which is firm and reliable.

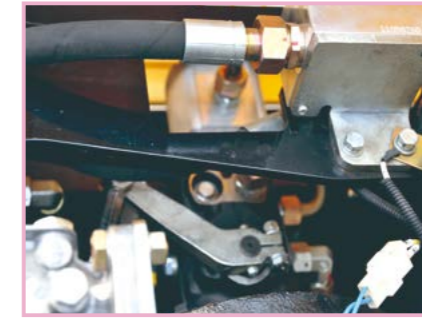
Type	RWYL92	RWYL92N	Type	RWYL92	RWYL92N
Run			Fuel tank volume	130L	
Speed	0-10km/h		Lubricant L	8.9L	
Turning radius	2965mm		Fuel consumption	285g/kWh	
Climbing capacity in theory	55%		Dimension		
Compaction			Width of steel drum	1680mm	
Static load forward/back	233N/cm		Diameter of steel drum	1200mm	
Nominal amplitude	1.6/0.6mm		Tread	2400mm	
Vibration frequency	31/41Hz		Total length	4535mm	
Exciting force	120/75KN		Total width	1820mm	
Engine			Total height	2850mm	
Model	Yanmar 4TNV98T	Quanchai	Packing size	4700x1980x1600mm	
Type	Diesel, liquid-cooled, four cylinder	Diesel, liquid-cooled, four cylinder	Weight		
Power	57kW/2400rpm	60kW/2400rpm	Working weight	6500kg	

※ For the customer's benefit, we will improve product design continuously, but pardon us for not notifying you.

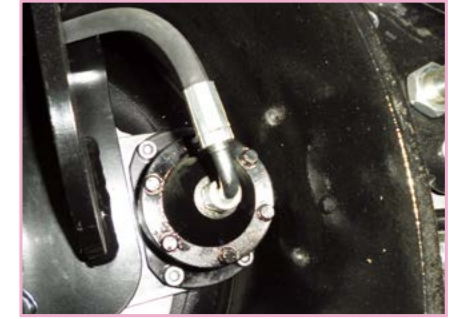
RWYL81B/81BC Combination Vibratory Roller



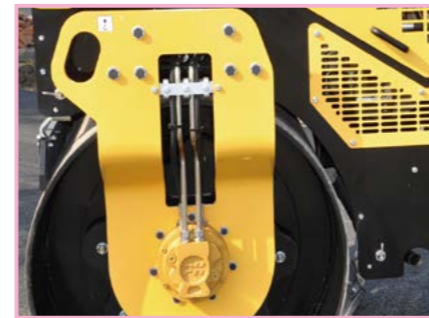
Yanmar diesel engine or Honda gasoline engine



Poclair hydraulic plunger pump



Hydraulic automatic brake system



Danfoss hydraulic driving motor and hydraulic vibration motor



Integrated micro computer control panel



Forward/reverse and vibrating all controlled by the integrated control lever. The engine start is with neutral safety structure realised by the handle



High-pressure water spray system, sprinkler nozzle can be quickly replaced



Super wear-resistant scraper, which can be picked up when transition



Wide-base smooth tyres, which can compact asphalt and concrete road, and can also compact viscous, and sandy base materials.

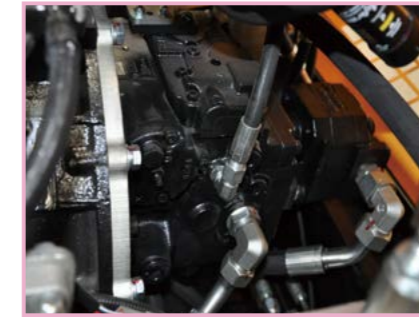
Type	RWYL81B	RWYL81BC	Type	RWYL81B	RWYL81BC
Run			Power	20hp/3200rpm	17.8KW/3000rpm
Rear wheel driving mode	Double motors drive		Fuel tank volume	30L	30L
Speed	0-8km/h		Lubricant L	1.8	2.2L
Turning radius	2000mm		Fuel consumption	313g/kWh	235g/kWh
Climbing capacity in theory	30%		Dimension		
Compaction			Width of steel drum	1000mm	
Static load forward	70N/cm		Diameter of steel drum	620mm	
Nominal amplitude	0.5mm		Tread	1535mm	
Vibration frequency	65Hz		Tyre specification	205/60-15	
Exciting force	25kN(Front drum)		Tyre diameter	630mm	
Each tyre loading	200kg		Total lengthxwidthxheight	2130x1100x2450mm	2230x1100x2450mm
Water tank volume	150L		Packing size	2400x1200x1800mm	2500x1200x1800mm
Engine			Weight		
Model	HONDA GX630	Yanmar 3TNV80	Working weight	1480kg	1700kg
Type	Gasoline, air-cooled, double cylinder	Diesel, liquid-cooled, three cylinder			

* For the customer's benefit, we will improve product design continuously, but pardon us for not notifying you.

RWYL82/82B/82N/82BN Combination Vibratory Roller



Yanmar diesel engine or Quanchai diesel engine



Danfoss hydraulic plunger pump



Danfoss hydraulic vibration motor



Poclair hydraulic driving motor



Integrated micro computer control panel



Forward/reverse and vibrating all controlled by the integrated control lever. The engine start is with neutral safety structure realised by the handle



Emulsified liquid tank



Electrically controller water-spray



Wide-base smooth tyres, which can compact asphalt and concrete road, and can also compact viscous, and sandy base materials.

Type	RWYL82	RWYL82B	RWYL82N	RWYL82BN	Type	RWYL82	RWYL82B	RWYL82N	RWYL82BN
Run					Power	26.9kW/3000rpm		28kW/2600rpm	
Rear wheel driving mode	Single motor drive	Double motors drive	Single motor drive	Double motors drive	Fuel tank volume	40L			
Speed	0-12km/h				Lubricant L	6L			
Turning radius	2600mm				Fuel consumption	263g/kWh		263g/kWh	
Climbing capacity in theory	40%				Dimension				
Compaction					Width of steel drum	1200mm			
Static load forward	125N/cm				Diameter of steel drum	700mm			
Nominal amplitude	0.5mm				Tread	1760mm			
Vibration frequency	60Hz				Tyre specification	9.5/65-15			
Exciting force	30kN(Front drum)				Tyre diameter	670mm			
Each tyre loading	375kg	381.25kg	381.25kg	387.5kg	Total lengthxwidthxheight	2495x1310x2440mm			
Water tank volume	200L				Packing size	2800x1450x1950mm			
Engine					Weight				
Model	Yanmar 3TNV88		Quanchai		Working weight	3000kg	3050kg	3050kg	3100kg
Type	Diesel, liquid-cooled, three cylinder								

* For the customer's benefit, we will improve product design continuously, but pardon us for not notifying you.

RWYL83/83B/83N/83BN Combination Vibratory Roller



Yanmar diesel engine



Quanchai diesel engine



Danfoss hydraulic vibration motor



Poclair hydraulic double driving motors, with automatic brake mechanism



Integrated micro computer control panel, which can realize various functions such as operation, monitoring and alarm



Walking reversing mechanism with a neutral locking function ensures safe start of the machine



Emulsified liquid tank



Electrically controller water-spray



Wide-based smooth tyres, which can compact asphalt and concrete road, and can also compact viscous, and sandy base materials.



With LED high-intensity lighting for night construction



The cover is fixed by door lock mechanism of the car, which is firm and reliable.



Super wear-resistant scraper, which can be picked up when transition

Type	RWYL83	RWYL83B	RWYL83N	RWYL83BN	Type	RWYL83	RWYL83B	RWYL83N	RWYL83BN
Run					Power	35kW/3000rpm		35kW/2500rpm	
Rear wheel driving mode	Single motor drive	Double motors drive	Single motor drive	Double motors drive	Fuel tank volume	70L			
Speed	0-12km/h				Lubricant L	6.5L		7L	
Turning radius	3000mm				Fuel consumption	261g/kWh		225g/kWh	
Climbing capacity in theory	40%				Dimension				
Compaction					Width of steel drum	1400mm			
Static load forward	150N/cm				Diameter of steel drum	900mm			
Nominal amplitude	0.5mm				Tread	1950mm			
Vibration frequency	60Hz				Tyre specification	10.5/80-16			
Exciting force	40kN(Front drum)				Tyre diameter	790mm			
Each tyre loading	500kg	506.25kg	506.25kg	512.5kg	Total lengthxwidthxheight	2850x1520x2700mm			
Water tank volume	200L				Packing size	3000x1670x2200mm			
Engine					Weight				
Model	Yanmar 4TNV88		Quanchai		Working weight	4000kg	4050kg	4050kg	4100kg
Type	Diesel, liquid -cooled, four cylinder								

* For the customer's benefit, we will improve product design continuously, but pardon us for not notifying you.

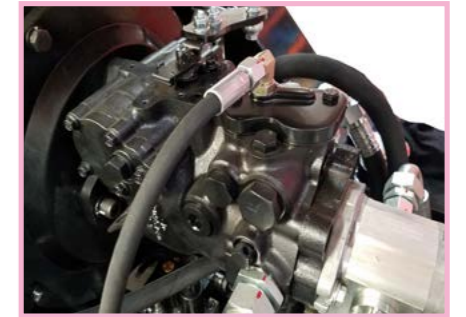
RWYL802/802N Tyre Roller



The front and back tyres are staggered, which make compaction completely



Yanmar diesel engine



Danfoss hydraulic plunger pump



Poclair driving motors, middle support and double motors drive



Integrated micro computer control panel



Walking reversing mechanism with a neutral locking function ensures safe start of the machine



Emulsified liquid tank



Wide-base smooth tyres, which can compact asphalt densely



With LED high-intensity lighting for night construction

Type	RWYL802	RWYL802N	Type	RWYL802	RWYL802N
Run			Power	35kW/3000rpm	35kW/2500rpm
Rear wheel driving mode	Double motors drive		Fuel tank volume	90L	90L
Speed	0-14km/h		Lubricant L	6.5L	6L
Steering angle	±25°		Fuel consumption	261g/kWh	268g/kWh
Climbing capacity in theory	30%		Dimension		
Compaction			Working width	1540mm	
Single tyre load	457kg		Tread	1950mm	
Water tank volume	200L		Tyre specification	10.5/80-16	
Hydraulic oil tank volume	60L		Tyre diameter	790mm	
Engine			Packing size	2920x1280x2200mm	
Model	Yanmar 4TNV88	Quanchai	Weight		
Type	Diesel engine, water-cooled, 4stroke, four cylinder		Working weight	3500kg	

* For the customer's benefit, we will improve product design continuously, but pardon us for not notifying you.

RWYL71/71B Ride-on Hydraulic Vibratory Roller



Yanmar diesel engine



Danfoss hydraulic plunger pump



Sauer hydraulic motor



Poclair motor



Integrated micro computer control panel



Forward/reverse and vibrating all controlled by the integrated control lever. The engine start is with neutral safety structure realised by the handle



Plastic water tank free from corrosion and convenient for the water-spraying



Electrically controlled water-spray, high efficient and water-saving



Wear-resistant scraper can be lift and fixed during transportation

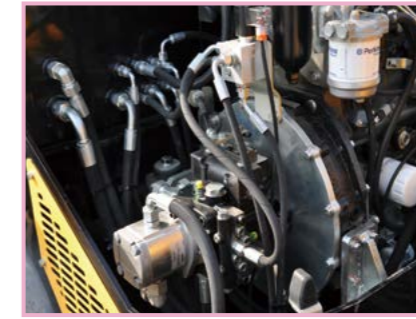
Type	RWYL71	RWYL71B	Type	RWYL71	RWYL71B
Run			Fuel tank volume	70L	
Speed	0-12km/h		Lubricant L	6.5L	
Turning radius	3000mm		Fuel consumption	261g/kWh	
Climbing capacity in theory	40%		Dimension		
Compaction			Width of steel drum	1400mm	
Static load forward/back	150/135.5N/cm		Diameter of steel drum	900mm	
Nominal amplitude	0.5mm		Tread	1950mm	
Vibration frequency	60Hz		Total length	2850mm	
Exciting force	40kN(Front drum)	2x40kN(Double drums)	Total width	1520mm	
Water tank volume	200L		Total height	2700mm	
Engine			Packing size	3000x1670x2200mm	
Model	Yanmar 4TNV88		Weight		
Type	Diesel engine, water-cooled, 4stroke, four cylinder		Working weight	4200kg	
Power	35kW/3000rpm				

* For the customer's benefit, we will improve product design continuously, but pardon us for not notifying you.

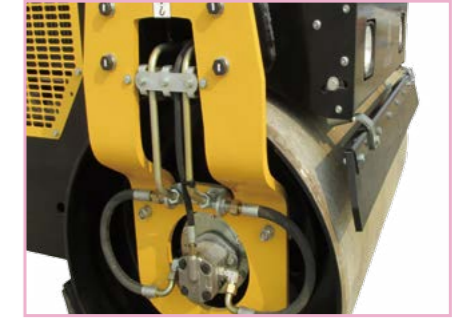
RWYL61/61B/61N Ride-on Hydraulic Vibratory Roller



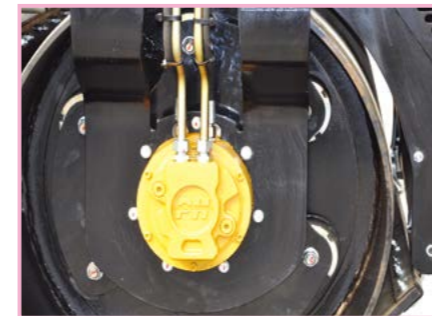
Yanmar diesel engine



Danfoss hydraulic plunger pump



Sauer hydraulic motor



Poclair motor



Integrated micro computer control panel



Forward/reverse and vibrating all controlled by the integrated control lever. The engine start is with neutral safety structure realised by the handle



Plastic water tank free from corrosion and convenient for the water-spraying



Electrically controlled water-spray, high efficient and water-saving



Wear-resistant scraper can be lift and fixed during transportation

Type	RWYL61	RWYL61B	RWYL61N	Type	RWYL61	RWYL61B	RWYL61N
Run				Fuel tank volume	40L		40L
Speed		0-12km/h		Lubricant L	6L		6L
Turning radius		2600mm		Fuel consumption	263g/kWh		225g/kWh
Climbing capacity in theory		40%		Dimension			
Compaction				Width of steel drum		1200mm	
Static load forward/back		125/115N/cm		Diameter of steel drum		700mm	
Nominal amplitude		0.5mm		Tread		1760mm	
Vibration frequency		60Hz		Total length		2495mm	
Exciting force	30kN(Front drum)	2x30kN(Double drums)		Total width		1310mm	
Water tank volume		200L		Total height		2440mm	
Engine				Packing size		2800x1450x2100mm	
Model	Yanmar 3TNV88		CHANGCHAI ZN390B	Weight			
Type	Diesel engine, water-cooled, 4stroke, three cylinder			Working weight	2900kg		3100kg
Power	26.9kW/3000rpm		28.5kW/2600rpm				

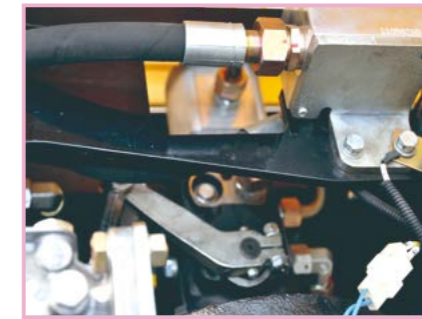
* For the customer's benefit, we will improve product design continuously, but pardon us for not notifying you.

RWYL51/51C/51BC

Ride-on Hydraulic Vibratory Roller



Yanmar diesel engine or Honda gasoline engine



Imported Poclain hydraulic variable plunger pump, drives the machine stepless speed walking



Hydraulic automatic brake system



Double American brand cycloid hydraulic motors drive the machine walking



Forward/reverse running and vibrating all controlled by the integrated control lever



Integrated micro computer control plate, with operation, monitoring, alarm and other functions.



Plastic water tank free from corrosion and convenient for the water-spraying



Electrically controlled water-spray, high efficient and water-saving



Super durable scraper, can lift up.

Type	RWYL51	RWYL51C	RWYL51BC	Type	RWYL51	RWYL51C	RWYL51BC
Run				Fuel tank volume	30L		
Speed	0-8km/h			Lubricant L	1.9L	2.7L	
Steering radius	1900mm			Fuel consumption	313g/kWh	286g/kWh	
Climbing capacity in theory	30%			Dimension			
Compaction				Width of steel drum	900mm		
Static load forward/back	70/75N/cm	80/85N/cm		Diameter of steel drum	560mm		
Nominal amplitude	0.5mm			Tread	1340mm	1520mm	
Vibration frequency	65Hz			Total length	1980mm	2140mm	
Exciting force	22kN	25kN	2 × 25kN	Total width	980mm	980mm	
Water tank volume	150L			Total height	2250mm	2230mm	
Engine				Packing size	2180x1138x1820mm		2380x1138x1820mm
Model	HONDA GX630	Yanmar 3TNV80		Weight			
Type	Gasoline, air-cooled, double cylinder	Diesel, liquid-cooled, three cylinder		Working weight	1480kg	1700kg	
Power	20hp/3200rpm	17.8KW/3000rpm					

※ For the customer's benefit, we will improve product design continuously, but pardon us for not notifying you.

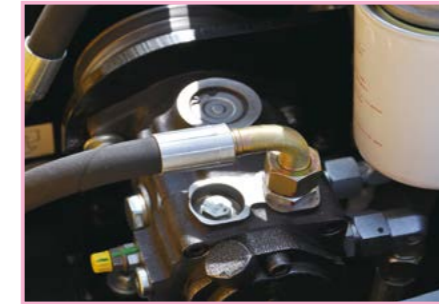
RWYL42B/42BC

Ride-on Vibratory Roller(Fully hydraulic)

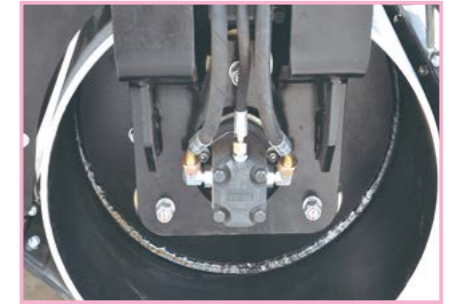
- Hydraulic walking (double drive)
- Hydraulic vibration
- Hydraulic steering



Chinese top brand diesel engine
Honda gasoline engine



Imported Sauer variable plunger pump drives the machine stepless speed walking



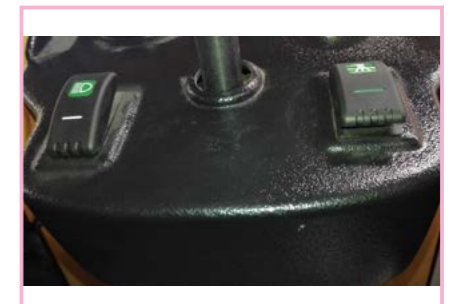
Steel drum vibration is driven by imported motor and button controlled



Double American brand cycloid hydraulic motors drive the machine walking



Hydraulic vibration, integrated control lever, easy to operate



Water-spraying electrically controlled, user-friendly



Plastic water tank free from corrosion and convenient for the water-spraying



Seat with neutral start switch. Operator sits up, the engine will stop.



Lubrication filler

Type	RWYL42B	RWYL42BC	Type	RWYL42B	RWYL42BC
Run			Engine		
Speed	0-4km/h		Model	HONDA GX390	186F
Steering radius	2600mm		Type	Gasoline, air-cooled, single cylinder	Diesel, air-cooled, single cylinder
Climbing capacity in theory	30%		Power	13.0hp/3600rpm	8.0hp/3600rpm
Compaction			Fuel tank volume	6.5L	10L
Static load forward/back	56/77N/cm	57/77N/cm	Lubricant L	1.1L	1.65L
Nominal amplitude	0.5mm		Fuel consumption	374g/kWh	280g/kWh
Vibration frequency	65Hz		Dimension		
Exciting force	20kN		Width of steel drum	700mm	
Water tank volume	67L		Diameter of steel drum	500mm	
Working			Tread	1230mm	
Drive	Hydraulic drive		Total length	1810mm	
Vibration	Hydraulic vibration		Total width	800mm	
Steering	Hydraulic steering		Total height	1990mm	
			Packing size	2110x980x1610mm	
			Weight		
			Working weight	950kg	970kg

* For the customer's benefit, we will improve product design continuously, but pardon us for not notifying you.

RWYL42A/42AC

Ride-on Vibratory Roller(Hydraulic steering)

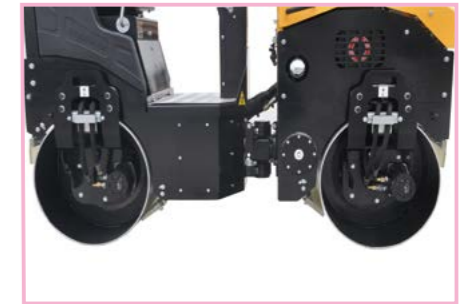
- Hydraulic walking (double drive)
- Hydraulic steering
- Mechanical vibration



Chinese top brand diesel engine
Honda gasoline engine



American light-duty variable plunger pump
drives the machine stepless speed walking



Double American brand cycloid hydraulic
motors drive the machine walking



High-grade foaming steering wheel,
operate comfortable



Electromagnetic clutch, integrated control
lever, easy to operate



Water-spraying electrically controlled,
user-friendly



Plastic water tank free from corrosion and
convenient for the water-spraying



Seat with neutral start switch, operator
sits up, the engine will stop.



Lubrication filler

Type	RWYL42A	RWYL42AC	Type	RWYL42A	RWYL42AC
Run			Engine		
Speed	0-4km/h		Model	HONDA GX390	186F
Steering radius	2600mm		Type	Gasoline, air-cooled, single cylinder	Diesel, air-cooled, single cylinder
Climbing capacity in theory	30%		Power	13.0hp/3600rpm	8.0hp/3600rpm
Compaction			Fuel tank volume	6.5L	10L
Static load forward/back	56/77N/cm	57/77N/cm	Lubricant L	1.1L	1.65L
Nominal amplitude	0.5mm		Fuel consumption	374g/kWh	280g/kWh
Vibration frequency	70Hz		Dimension		
Exciting force	20kN		Width of steel drum	700 / 768 mm	
Water tank volume	67L		Diameter of steel drum	500mm	
Working			Tread	1230mm	
Drive	Hydraulic drive		Total length	1810mm	
Vibration	Mechanical drive, electromagnetic clutch		Total width	830mm	
Steering	Hydraulic steering		Total height	1990mm	
			Packing size	2110x980x1610mm	
			Weight		
			Working weight	900kg	920kg

* For the customer's benefit, we will improve product design continuously, but pardon us for not notifying you.

RWYL41/41C

Ride-on Vibratory Roller(Mechanical steering)

- Hydraulic walking (single drive)
- Mechanical steering
- Mechanical vibration



Chinese top brand diesel engine
Honda gasoline engine



American light-duty variable plunger pump
drives the machine stepless speed walking



American brand hydraulic motor, drive the
front drum walking



High-grade foaming steering wheel,
operate comfortable



Electromagnetic clutch, integrated control
lever, easy to operate



Water-spraying electrically controlled,
user-friendly



Plastic water tank free from corrosion and
convenient for the water-spraying



Seat with neutral start switch, operator
sits up, the engine will stop.



Lubrication filler

Type	RWYL41	RWYL41C	Type	RWYL41	RWYL41C
Run			Engine		
Speed	0-3.5km/h		Model	HONDA GX390	186F
Steering radius	1500mm		Type	Gasoline, air-cooled, single cylinder	Diesel, air-cooled, single cylinder
Climbing capacity in theory	25%		Power	13.0 hp/3600rpm	8.0hp/3600rpm
Compaction			Fuel tank volume	6.5L	10L
Static load forward/back	50/79N/cm	62/78N/cm	Lubricant L	1.1L	1.65L
Nominal amplitude	0.5mm		Fuel consumption	313g/kWh	280g/kWh
Vibration frequency	70Hz		Dimension		
Exciting force	20kN		Width of steel drum	700/540mm(Forward and back)	
Water tank volume	38L		Diameter of steel drum	500/400mm(Forward and back)	
Working			Tread	1187mm	
Drive	Hydraulic drive		Total length	1935mm	
Vibration	Mechanical drive, electromagnetic clutch		Total width	800mm	
Steering	Hand mechanical type		Total height	1950mm	
			Packing size	2110x980x1610mm	
			Weight		
			Working weight	780kg	790kg

* For the customer's benefit, we will improve product design continuously, but pardon us for not notifying you.

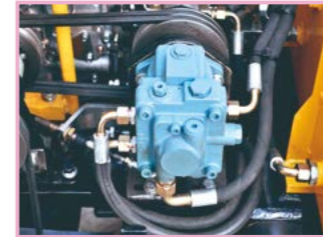
RWYL35/35C

Walk-behind Double Drum Road Roller(Fully hydraulic)

Hydraulic drive, vibrate and steer
Fully hydraulic roller
Stronger power, suitable for high-altitude construction work



Chinese top brand diesel engine, or Honda gasoline engine



Imported Poclain heavy-duty variable plunger pump drives the machine stepless speed walking



Double American brand cycloid hydraulic motors drive the machine walking



Imported motor drives the steel drum vibrating, button controlled



Forward/reverse running, left/right steering and vibrating all controlled by the integrated control lever



Stainless water-spraying pipe



Plastic water tank free from corrosion and convenient for the water-spraying



Dead-man safety control

Type	RWYL35	RWYL35C
Run		
Speed	0-3.6km/h (Forward and reverse)	
Steering angle	±15°	
Climbing capacity in theory	30%	
Compaction		
Static load forward/back	60/64N/cm	62/65N/cm
Nominal amplitude	0.5mm	
Vibration frequency	60Hz	
Exciting force	20kN	
Water tank volume	40L	
Working		
Drive	Variable plunger pump, constant displacement hydraulic motor	
Vibration	Hydraulic vibrating	
Steering	Hydraulic steering	
Engine		
Model	HONDA GX390	186F
Type	Gasoline, air-cooled, single cylinder	Diesel, air-cooled, single cylinder
Power	13.0hp/3600rpm	8.0hp/3600rpm
Fuel tank volume	6.5L	5.5L
Lubricant L	1.1L	1.65L
Fuel consumption	374g/kWh	280g/kWh
Dimension		
Width of steel drum	680mm	
Diameter of steel drum	355mm	
Tread	650mm	
Total length(keep handrail level)	2440mm	
Total width	755mm	
Total height(keep handrail upright)	1800mm	
Packing size	1450x854x1416mm	
Weight		
Working weight	860kg	880kg

* For the customer's benefit, we will improve product design continuously, but pardon us for not notifying you.

RWYL34B / 34BC

Walk-behind Double Drum Road Roller (Hydraulic steering)



RWYL34B



RWYL34BC



Imported Danfoss variable plunger pump drives the machine stepless speed walking



Plastic water tank free from corrosion and convenient for the water-spraying



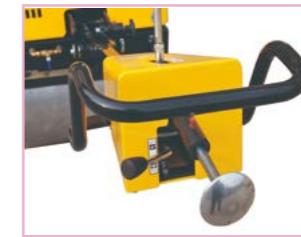
Double American brand cycloid hydraulic motors drive the machine walking



Forward/reverse running, left/right steering and vibrating all controlled by the integrated control lever



Lifting point for the convenience of lifting



Dead-man safety control



Front drum hydraulic steering at the angle of 15 degree

Type	RWYL34B	RWYL34BC
Run		
Speed	0-3.5km/h (Forward and reverse)	
Steering angle	± 15°	
Climbing capacity in theory	30%	
Compaction		
Static load forward/back	59/64N/cm	60.7/65.7N/cm
Nominal amplitude	0.5mm	
Vibration frequency	65Hz	
Exciting force	17kN	
Water tank volume	38L	
Working		
Drive	Variable plunger pump, constant displacement hydraulic motor	
Vibration	Mechanical drive, electromagnetic clutch	
Steering	Hydraulic steering	
Engine		
Model	HONDA GX390	186F
Type	Gasoline, air-cooled, single cylinder	Diesel, air-cooled, single cylinder
Power	13.0hp/3600rpm	8.0hp/3600rpm
Fuel tank volume	6.5L	5.5L
Lubricant L	1.1L	1.65L
Fuel consumption	374g/kWh	280g/kWh
Dimension		
Width of steel drum	680mm	
Diameter of steel drum	355mm	
Tread	650mm	
Total length(keep handrail level)	2460mm	
Total width	732mm	
Total height(keep handrail upright)	1800mm	
Packing size	1450x854x1416mm	
Weight		
Working weight	840kg	860kg

* For the customer's benefit, we will improve product design continuously, but pardon us for not notifying you.

RWYL33/33C/33S

Walk-behind Double Drum Road Roller(Manual steering)



RWYL33C



RWYL33S



Chinese top brand diesel engine, or Honda gasoline engine



American light-duty variable plunger pump drives the machine stepless walking



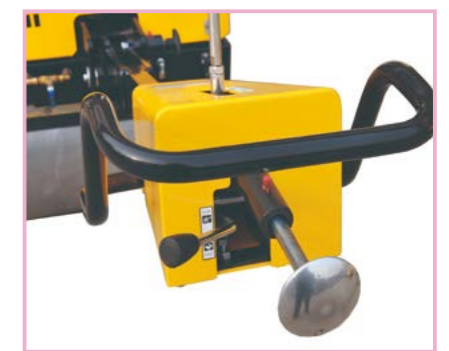
Double American brand cycloid hydraulic motors drive the machine walking



Forward/reverse running and vibrating all controlled by the integrated control lever



Plastic water tank free from corrosion and convenient for the water-spraying



Dead-man safety control

Type	RWYL33	RWYL33C	RWYL33S
Run	0-3.5km/h (Forward and reverse)		
Speed	0-3.5km/h (Forward and reverse)		
Climbing capacity in theory	30%		25%
Compaction			
Static load forward/back	56/59N/cm	58/60N/cm	61.5/65.5N/cm
Nominal amplitude	0.5mm		
Vibration frequency	65Hz		
Exciting force	17kN		
Water tank volume	25L		
Working			
Drive	Variable plunger pump, constant displacement hydraulic motor		
Vibration	Mechanical drive, electromagnetic clutch		
Engine			
Model	HONDA GX390	178F	G110
Type	Gasoline, air-cooled, single cylinder	Diesel, air-cooled, single cylinder	Diesel, water-cooled, single cylinder
Power	13.0hp/3600rpm	6.0hp/3600rpm	11(8.9)hp/2400rpm
Fuel tank volume	6.5L	3.5L	11L
Lubricant L	1.1L	1.1L	1.3L
Fuel consumption	374g/kWh	280g/kWh	125g/kWh
Dimension			
Width of steel drum	680mm		680mm
Diameter of steel drum	355mm		430mm
Tread	500mm		590mm
Total length(keep handrail level)	2320mm		2480mm
Total width	732mm		732mm
Total height(keep handrail upright)	1710mm		1785mm
Packing size	1350x810x1290mm		1560 × 830 × 1910mm
Weight			
Working weight	692kg	700kg	840kg

* For the customer's benefit, we will improve product design continuously, but pardon us for not notifying you.

RWYL32/32C/31B/31BC

Walk-behind Double Drum Road Roller(Manual steering)



RWYL32



RWYL31BC

Type	RWYL32	RWYL32C	RWYL31B	RWYL31BC	Type	RWYL32	RWYL32C	RWYL31B	RWYL31BC
Run					Model	HONDA GX390	178F	HONDA GX270	178F
Speed (Forward and reverse)	0-3km/h		0-1.8km/h		Type	Gasoline, air-cooled, single cylinder	Diesel, air-cooled, single cylinder	Gasoline, air-cooled, single cylinder	Diesel, air-cooled, single cylinder
Climbing capacity in theory	25%		30%		Power	13hp/3600rpm	6.0hp/3600rpm	9hp/3600rpm	6.0hp/3600rpm
Compaction					Fuel tank volume	6.5L	3.5L	6L	3.5L
Static load	47/50N/cm	45/50N/cm	35/38N/cm	37.3/40.3N/cm	Lubricant L	1.1L	1.1L	1.1L	1.1L
Nominal amplitude	0.6mm		0.6mm		Fuel consumption	374g/kWh	280g/kWh	374g/kWh	280g/kWh
Vibration frequency	70Hz		70Hz		Dimension				
Exciting force	15kN		13.5kN		Width of steel drum	600mm			
Water tank volume	50L		30L		Diameter of steel drum	450mm			
Working					Total length(keep handrail level)	2460mm			
Drive	Hydraulic drive		Hydraulic pump and motor		Total width	700mm			
Vibration	Mechanical drive,electromagnetic clutch		Manual clutch		Total height(keep handrail upright)	1800mm			
Engine					Packing size	1470x820x1232mm			
					Weight				
					Working weight	595kg	583kg	550kg	570kg

* For the customer's benefit, we will improve product design continuously, but pardon us for not notifying you.

RWYL21/21C/22/22C/11/11C

Walk-behind Single Drum Road Roller



RWYL22



RWYL11

Type	RWYL21	RWYL22	RWYL21C	RWYL22C	RWYL11	RWYL11C
Run						
Speed	0-2.8km/h (Forward and reverse)				1.5km/h (Forward and reverse)	
Climbing capacity in theory	30%				20%	
Compaction						
Static load forward/back	45N/cm				45N/cm	
Nominal amplitude	0.6mm				0.6mm	
Vibration frequency	70Hz				70Hz	
Exciting force	15kN				12kN	
Water tank volume	15L				15L	
Working						
Drive	Hydrostatic drive				Hydraulic pump and motor	
Vibration	Automatic clutch	Manual clutch	Automatic clutch	Manual clutch	Automatic clutch	
Engine						
Model	HONDA GX160		170F		HONDA GX160	170F
Type	Gasoline, air-cooled, single cylinder		Diesel, air-cooled, single cylinder		Gasoline, air-cooled, single cylinder	Diesel, air-cooled, single cylinder
Power	5.5hp/3600rpm		4hp/3600rpm		5.5hp/3600rpm	4hp/3600rpm
Fuel tank volume	3.6L		2.5L		3.6L	2.5L
Lubricant L	0.6L		0.6L		0.6L	0.6L
Fuel consumption	395g/kWh		280g/kWh		395g/kWh	280g/kWh
Dimension						
Width of steel drum	600mm				560mm	
Diameter of steel drum	450mm				400mm	
Total length(keep handrail level)	1420mm				1380mm	
Total width	750mm				700mm	
Total height(keep handrail upright)	1100mm				1050mm	
Packing size	1050x900x1200mm				970x780x1130mm	
Weight						
Working weight	280kg	283kg	292kg	295kg	286kg	298kg

* For the customer's benefit, we will improve product design continuously, but pardon us for not notifying you.

RWYL301/301C

Remote Control Double Drum Roller

This high-tech machine is a technological revolution in the field of road rollers which fill the national gaps. It can be operated by person leisurely.

Type	RWYL301	RWYL301C	Type	RWYL301	RWYL301C
Run			Model	HONDA GX390	186F
Speed	1.2km/h(low) , 3.6km/h(high)		Type	Gasoline, air-cooled, single cylinder	Diesel, air-cooled, single cylinder
Turning radius	15°		Power	13.0hp/3600rpm	8.0hp/3600rpm
Climbing capacity in theory	30%		Fuel tank volume	6.5L	5.5L
Compaction			Lubricant L	1.1L	1.65L
Static load	50.2N/52.2N/cm	52N/54N/cm	Fuel consumption	374g/kWh	280g/kWh
Nominal amplitude	0.5mm		Dimension		
Vibration frequency	60Hz		Width of steel drum	680mm	
Exciting force	20kN		Diameter of steel drum	355mm	
Water tank volume	30L		Total length	1120mm	
Working			Total width	755mm	
Drive	Imported hydraulic pump and motor		Total height	1100mm	
Vibration	Hydraulic vibrating		Packing size	1245x865x1252mm	
Engine			Weight		
			Working weight	848kg	870kg

* For the customer's benefit, we will improve product design continuously, but pardon us for not notifying you.



RWYL202/202C Remote Control Trench Roller

Remote control trench roller is self-developed by our company. With several national patents, this product fills the national gap. It is mainly used in the backfill compaction of drainage and heating pipeline trench and other construction projects.



The remote controller controls start, stop, forward/backward, steering, vibrating, and monitor the temperature of oil, water etc.



It is very safe for operator, especially used in the limited and dangerous area.

Type	RWYL202	RWYL202C
Run		
Speed	1.2km/h (low) 2.4km/h(high)	
Turning radius	1700mm	
Climbing capacity in theory	50%	
Compaction		
Static load forward/back	86/90N/cm	98/90N/cm
Nominal amplitude	1.7mm	
Vibration frequency	42Hz	
Exciting force	70kN/35kN(hydraulic control)	
Engine		
Model	HONDA GX690	Yanmar 3TNV80
Type	Gasoline, air cooled, double cylinder	Diesel, liquid cooled, three cylinder
Power	22.5hp/3600rpm	17.8KW/3000rpm
Fuel tank volume	30L	30L
Lubricant L	1.8L	2.2L
Fuel consumption	313g/kWh	286g/kWh
Dimension		
Width of steel wheel	600mm/850mm	
Diameter of steel wheel	520mm	
Tread	1000mm	
Total length	1900mm	
Total width	850mm	
Total height	1300mm	
Packing size	2180 x 1030 x 1520mmmm	
Weight		
Working weight	1530kg	1635kg

* For the customer's benefit, we will improve product design continuously, but pardon us for not notifying you.



RWYL24/24C Walk-behind Single Drum Road Roller

Type	RWYL24	RWYL24C
Run		
Speed	0-3.0km/h (Forward and reverse)	
Climbing capacity in theory	30%	
Compaction		
Static load	62N/cm	65N/cm
Nominal amplitude	0.5mm	
Vibration frequency	70Hz	
Exciting force	16kN	
Water tank volume	20L	
Working		
Drive	Hydrostatic drive	
Vibration	Mechanical drive, electromagnetic clutch	
Engine		
Model	HONDA GX390	178F
Type	Gasoline, air cooled, single cylinder	Diesel, air cooled, single cylinder
Power	13p/3600rpm	6.0hp/3600rpm
Fuel tank volume	6.5L	3.5L
Lubricant L	1.1L	1.1L
Fuel consumption	374g/kWh	280g/kWh
Dimension		
Width of steel wheel	715mm	
Diameter of steel wheel	560mm	
Total length	2145mm	
Total width	840mm	
Total height	1820mm	
Packing size	1150x1006x2050mm	
Weight		
Working weight	520kg	542kg

※ For the customer's benefit, we will improve product design continuously, but pardon us for not notifying you.



RWYL102/102C Double Drum Vibratory Trench Roller

Type	RWYL102	RWYL102C
Run		
Speed	0-3.0km/h (Forward and reverse)	
Turning angle	15°	
Climbing capacity in theory	40%	
Compaction		
Static load	50.2/52.2N/cm	52/54N/cm
Nominal amplitude	0.5mm	
Vibration frequency	40Hz	
Exciting force	20kN	
Engine		
Model	HONDA GX390	186F
Type	Gasoline, air cooled, single cylinder	Diesel, air cooled, single cylinder
Power	13p/3600rpm	8.0hp/3600rpm
Fuel tank volume	6.5L	3.5L
Lubricant L	1.1L	1.1L
Fuel consumption	374g/kWh	280g/kWh
Dimension		
Width of steel wheel	680mm	
Diameter of steel wheel	385mm	
Tread	650mm	
Total length	2460mm	
Total width	732mm	
Total height	1800mm	
Packing size	1450x850x1910mm	
Weight		
Working weight	838kg	860kg

※ For the customer's benefit, we will improve product design continuously, but pardon us for not notifying you.



RWBH24/31B Plate Compactor

(Single/Return-direction)

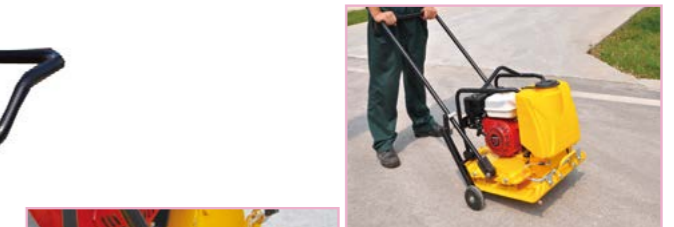
It is used to tamper engineering foundation, road margin and asphalt surface on constructing road, street, building, ditch and bridge in the field of road, municipal engineering, construction and water conservancy etc. It is better used for the tamping of narrow laneway.

Type	RWBH24 (Single direction)	RWBH31B (Return direction)	Type	RWBH24 (Single direction)	RWBH31B (Return direction)
Walking			Power	5.5hp/3600rpm	
Speed	18m/min	23m/min	Fuel tank volume	3.6L	
Climbing capacity in theory	25%		Dimension		
Compaction			Plate size	517x505mm	710x430mm
Nominal amplitude	0.7mm	0.5mm	Total length(keep handrail level)	1090mm	1320mm
Vibrating frequency	100Hz	75Hz	Total width	505mm	430mm
Exciting force	18kN	30kN	Total height (keep handrail upright)	900mm	1330mm
Water tank volume	12L	12L	Packing size	910x630x720mm	850x500x1450mm
Engine			Weight		
Model	HONDA GX160		Working weight	100kg	165kg
Type	Gasoline engine, air cooled, 4stroke, OHV, single cylinder				

※ For the customer's benefit, we will improve product design continuously, but pardon us for not notifying you.



RWBH31B



Transitions for short distance



Strengthen vibration plate



RWBH24

RWFD11 Dumper



Yanmar diesel engine



Poclain hydraulic plunger pump



Danfoss hydraulic motor, Four wheels driving



The hopper is welded by Mn alloy steel plate, with high strength



The hopper controlled by hydraulic cylinder



The hopper can rotate 270° and can be tilted forward, leftward, and rightward.



Walking reversing mechanism with a neutral locking function ensures safe start of the machine



Integrated micro computer control panel, which can realize various functions such as operation, monitoring and alarm



With LED high-intensity lighting for night construction

Type	RWFD11
Weight	
Loading capacity	1620kg
Light weight	1510kg
Engine	
Model	Yanmar 3TNV80
Type	Diesel engine, water-cooled, 4stroke, three cylinder
Power	17.8kW
Fuel tank volume	30L
Lubricant L	3.4L
Fuel consumption	286g/kWh
Property parameters	
Speed	9km/h
Turning radius	3720mm
Climbing capacity in theory	30%
Dimension	
MAX. overall dimension	3240x1450x2400mm

* For the customer's benefit, we will improve product design continuously, but pardon us for not notifying you.

RWFD31/RWFD31N Dumper



Yanmar diesel engine



High-performance automatic stepless hydraulic torque converter, low speed performance, good handling



Double differential Good off-road



The hopper is welded by Mn alloy steel plate, with high strength



The hopper controlled by hydraulic cylinder



The hopper can rotate 270° and can be tilted forward, leftward, and rightward.



With the palm-shaped handle, the operation is comfortable



Integrated micro computer control panel, which can realize various functions such as operation, monitoring and alarm



With LED high-intensity lighting for night construction

Type	RWFD31	RWFD31N
Weight		
Loading capacity	3500kg	
Light weight	2800kg	
Engine		
Model	Yanmar 4TNV88	Changchai ZN490B
Type	Diesel engine, water-cooled, 4stroke, four cylinder	Diesel engine, water-cooled, 4stroke, four cylinder
Power	35kW	40kW
Fuel tank volume	38L	38L
Lubricant L	7.4L	7L
Fuel consumption	261g/kWh	268g/kWh
Property parameters		
Speed	20km/h	
Turning radius	4600mm	
Climbing capacity in theory	54%	
Dimension		
MAX. overall dimension	4100x1858x2200mm	

* For the customer's benefit, we will improve product design continuously, but pardon us for not notifying you.

RWFD61 Dumper



Yanmar turbocharged diesel engine



High-performance automatic stepless hydraulic torque converter, low speed performance, good handling



Double differential Good off-road



The hopper is welded by Mn alloy steel plate, with high strength



The hopper controlled by hydraulic cylinder



The hopper can rotate 270° and can be tilted forward, leftward, and rightward.



With the palm-shaped handle, the operation is comfortable



Integrated micro computer control panel, which can realize various functions such as operation, monitoring and alarm



With LED high-intensity lighting for night construction

Type	RWFD61
Weight	
Loading capacity	6000kg
Light weight	4200kg
Engine	
Model	Yanmar 4TNV98T
Type	Diesel engine, water-cooled, 4stroke, four cylinder
Power	57.3kW
Fuel tank volume	60L
Lubricant L	4.5L
Fuel consumption	252g/kWh
Property parameters	
Speed	25km/h
Turning radius	5700mm
Climbing capacity in theory	60%
Dimension	
MAX. overall dimension	4700x2190x3000mm

* For the customer's benefit, we will improve product design continuously, but pardon us for not notifying you.

RWJP31 Concrete Laser Screed (Boom type)



Double cylinder

Bearings are sealed

Screed head can turn upward

Soft landing



YANMAR turbo-charged engine



DANFOSS hydraulic variable pump



German MOBA laser system



Multi-function operating handle, center control



The solid tyre, puncture proof, long-life span



Hydraulic supporting legs one-key leveling



Special designed 3-kind steering mode



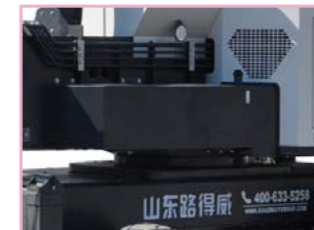
The smart dashboard monitors the engine and hydraulic system in real time.



The screed head falling is intelligent controlled, soft landing, ensure the precision



The auger bearings are seal designed, forbidden the concrete seeping in



The machine can rotate 360°, specially designed soft start and stop



Precision-machined boom arm, with patent, high strength, steady and no-shake



Specially designed auger, the dynamic balance is excellent, improved the leveling accuracy



The auger blade is made by alloy materials,



The screed head can turn upward, easy to clean



The high pressure water pump, clean the machine at anytime

Type	RWJP31	Type	RWJP31
Engine	Yanmar	Vibration frequency	60Hz
Model	Yanmar	Swing angle	± 45°
Type	Diesel engine, liquid cooled, 4 stroke, four cylinder	Screed head control	Ratio control
Power	63.9kW/2500r/min	Height of screed head	560mm
Engine oil volume	10.2/5.7L	Control accuracy	± 1.5mm
Fuel consumption	252g/kWh	Laser control system	
Running device		Control type	Microcomputer laser scan
Driving	4 Hydraulic drive motor	Control effect	Flat, slope or double slope
Steering	Front wheel/4-wheel/Crab-shaped turn	Operation mode	
Wheel	Antiskid tyre	Chair position	Ride-on forward type
Outrigger	4 legs, self-leveling	Forward and reverse	Handle control, stepless speed walking
Driving speed	0-8km/h	Telescopic arm	Handle control, stepless speed walking
Working speed	22m ² /min	Steering	Hydraulic intelligent control
Screed head		Cleaning system	
Type	Laser self-leveling	Power	Hydraulic motor
Arm length	6000mm	The pressure of water	7Mpa
Width	3850mm	Fuel tank volume	150L
Paving type	With auger	Hydraulic oil volume	150L
Auger force	Hydraulic motor	Outline dimension	5600x4375x3575mm
Exciting force	3000N	Weight	8200kg

* For the customer's benefit, we will improve product design continuously, but pardon us for not notifying you

RWJP32 Concrete Laser Screed (Boom type)

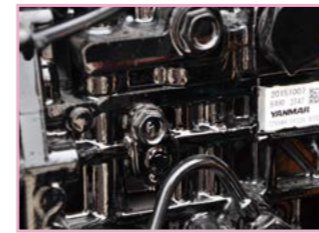


Double cylinder

Soft landing

Bearings are sealed

Screed head can turn upward



YANMAR turbo-charged engine



DANFOSS hydraulic variable pump



German MOBA laser system



Multi-function operating handle, center control



Integrated micro computer control plate,



Hydraulic supporting legs, one-key leveling



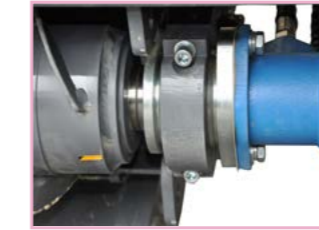
The solid tyre, puncture proof, long-life span



The smart dashboard monitors the engine and hydraulic system in real time,



The screed head falling is intelligent controlled, soft landing, ensure the precision



The auger bearings are seal designed, forbidden the concrete seeping in



The machine can rotate 360°, specially designed soft start and stop



Precision-machined boom arm, with patent, high strength, steady and no-shake



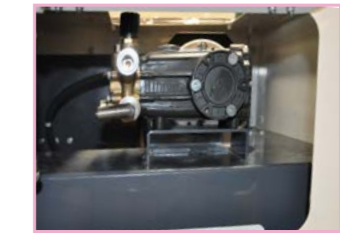
Specially designed auger, the dynamic balance is excellent, improved the leveling accuracy



The auger blade is made by alloy materials,



The screed head can turn upward, easy to clean

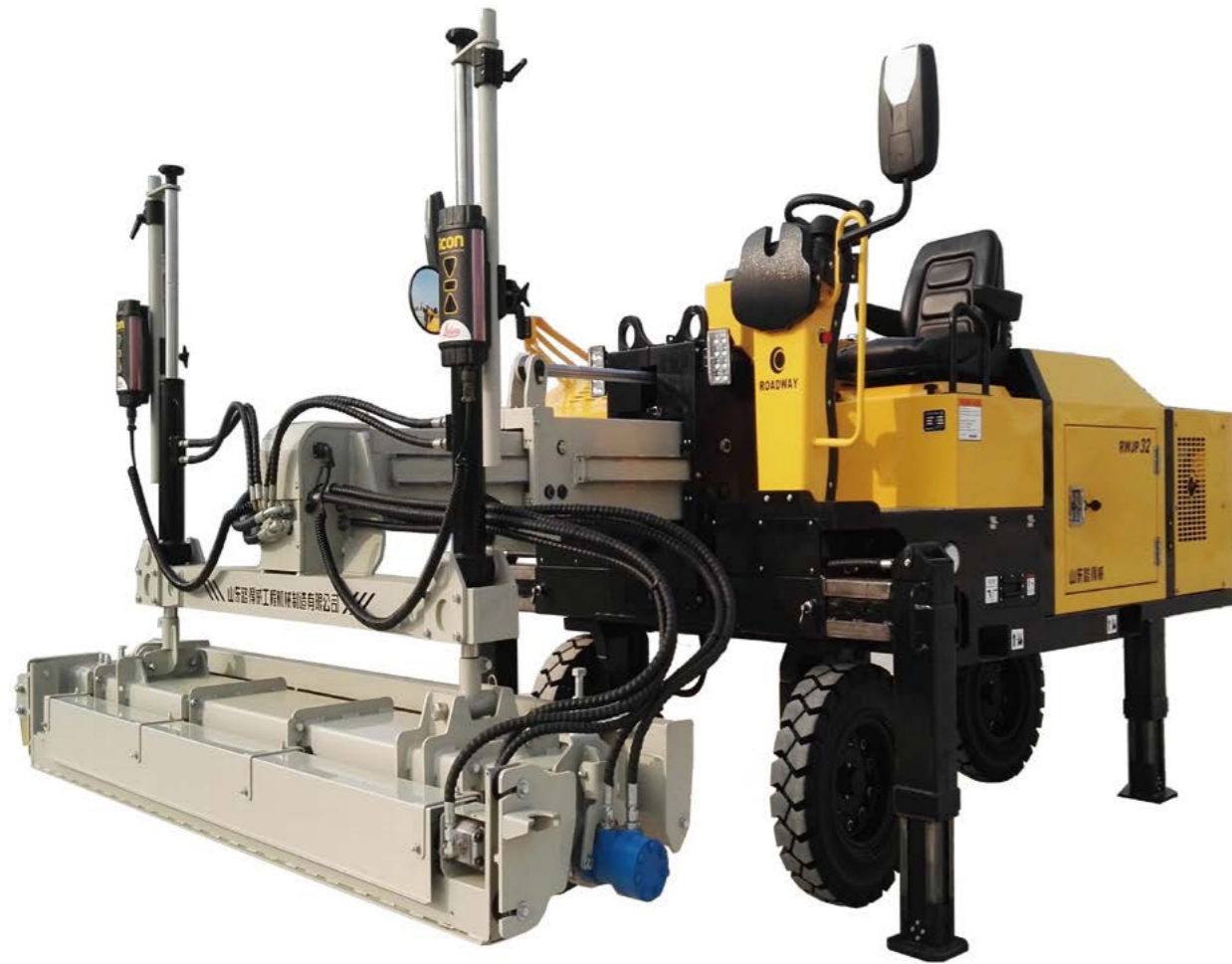


The high pressure water pump, clean the machine at anytime

Type	RWJP32	Type	RWJP32
Engine	Yanmar	Vibration frequency	60Hz
Model	Yanmar	Swing angle	±45°
Type	Diesel engine, liquid cooled, 4 stroke, four cylinder	Screed head control	Ratio control
Power	35kW/3000r/min	Height of screed head	500mm
Engine oil volume	6.0 L	Control accuracy	±1.5mm
Fuel consumption	261g/kWh	Laser control system	
Running device		Control type	Microcomputer laser scan
Driving	4 Hydraulic drive motor	Control effect	Flat, slope or double slope
Steering	Front wheel	Operation mode	
Wheel	Antiskid tyre	Chair position	Ride-on forward type
Outrigger	4 legs, self-leveling	Forward and reverse	Handle control, stepless speed walking
Driving speed	0-6km/h	Telescopic arm	Handle control, stepless speed walking
Working speed	20m ² /min	Steering	Hydraulic intelligent control
Screed head		Cleaning system	
Type	Laser self-leveling	Power	Hydraulic motor
Arm length	6000mm	The perssure of water	7Mpa
Width	3000mm	Fuel tank volume	100L
Paving type	With auger	Hydraulic oil volume	100L
Auger force	Hydraulic motor	Outline dimension	5135x3510x2150mm
Exciting force	3000N	Weight	6300kg

* For the customer's benefit, we will improve product design continuously, but pardon us for not notifying you.

RWJP33 Concrete Laser Screed (Boom type)



MOBA laser system



DANFOSS hydraulic system



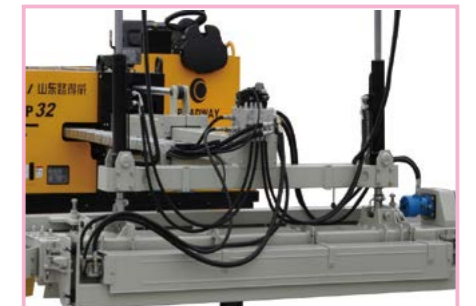
YANMAR diesel engine or HONDA gasoline engine



Eaton hydraulic motor



The integrated control platform



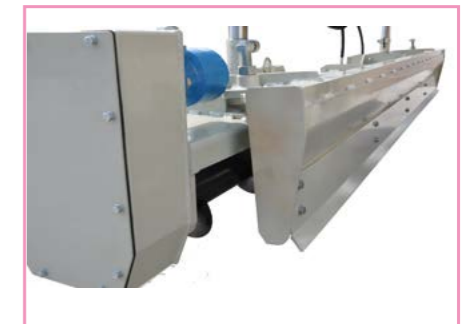
The screed head falling is intelligent controlled, soft landing, ensure the precision



The smart dashboard monitors the engine and hydraulic system in real time,



Intelligent controlled supporting legs, one-key leveling.



Specially designed auger, the dynamic balance is excellent, improved the leveling accuracy

Type	RWJP33	Type	RWJP33
Engine	HONDA GX690	Vibration frequency	50Hz
Model	HONDA GX690	Screed head control	Ratio control
Type	Gasoline engine, liquid cooled, 4 stroke, double cylinder	Height of screed head	400mm
Power	22.5hp/3600rpm	Control accuracy	±1.5mm
Lubricant L	1.9L	Laser control system	
Fuel consumption	370g/kWh	Control type	Microcomputer laser scan
Running device		Control effect	Flat, slope or double slope
Driving	3 Hydraulic drive motor	Operation mode	
Running mode	Straight direction or Transverse direction	Chair position	Ride-on forward type
Wheel	Antiskid tyre	Forward and reverse	Handle control, stepless speed walking
Outrigger	4 Legs, self-leveling	Telescopic arm	Handle control, stepless speed walking
Driving speed	0-3.6km/min	Steering	Steering wheel
Working speed	16m ² /min	Cleaning system	
Screed head		Power	Hydraulic motor
Type	Laser self-leveling	The Max.perssure of inlet	0.5Mpa
Arm length	4000mm	Fuel tank volume	60L
Width	2500mm	Hydraulic oil volume	60L
Paving type	With auger	Outline dimension	3720x2971x2702mm
Auger force	Hydraulic motor	Weight	2650kg
Exciting force	1000N		

* For the customer's benefit, we will improve product design continuously, but pardon us for not notifying you.

Concrete Laser Screed (Ride-on type)

The Laser Screeds is used in large area concrete construction, such as the workshop, supermarket, warehouse, airport, playground and so on. This machine can satisfy the construction requirements of large area and high planeness and levelness.

- The screed assembly is hydraulic controlled. Integrated with laser system and computer control system, the machine will self-level and finish the screeding work with high efficiency.
- The laser transmitter which measures the elevation is independently located, so there is no worry about the accumulative error. Compared with the traditional way, the construction joints will be greatly reduced, so the maintenance cost and slab use will be down greatly. For the complex floor which has high requirement for drainage, the 3-D floor processing system can be used.



German MOBA laser system



Imported hydraulic variable pump



Imported hydraulic valve



Imported driving motor



Quick connectors are imported from Italy, good performance



Honda/Yanmar or Perkins engine



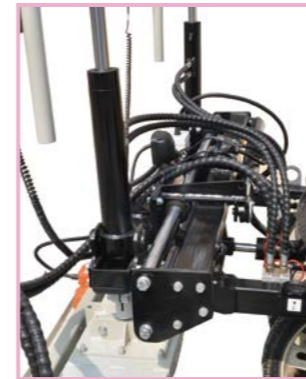
Equipped with high pressure water pump, can clean the machine at any time



Integrated console



RWJP14/15C Concrete Laser Screed



Screed head can swing left and right



RWJP14

Type	RWJP14	RWJP15C
Engine	HONDA GX630 Electric start	
Model	Yanmar	
Type	Gasoline engine, air-cooled, 4 stroke, OHV, double cylinder	Diesel engine, liquid cooled, 4stroke, three cylinder
Power	20hp/3600rpm	25hp/3000rpm
Fuel tank volume	40L	40L
Lubricant L	1.9L	2.7L
Fuel consumption	313g/kWh	286g/kWh
Running device	4 Hydraulic drive motor	
Driving	Solid puncture-proof tyre	
Wheel	0-35m/min	
Running speed	Swing type	
Screed system	2500mm	
Screed head type	With auger	
Width	Hydraulic motor	
Paving type	500N	
Auger force	50Hz	
Exciting force	350mm	
Vibration frequency	Microcomputer laser scan	
Screed plate height	Flat, slope or double slope(3D)	
Laser control system	Forward type	
Control type	Hand grip control, stepless speed walking	
Control effect	Hydraulic control	
Operation mode	Hydraulic motor	
Chair position	20L/min	
Forward and reverse	7MPa	
Steering	Size and Weight	
Cleaning system	Outline dimension	
Power	2717x2760x2380mm	2850x2950x2350mm
Theoretical flow	1200kg	1300kg
Rated pressure	Weight	
Size and Weight		
Outline dimension		
Weight		

* For the customer's benefit, we will improve product design continuously, but pardon us for not notifying you.

RWJP23/RWJP23B Concrete Laser Screed (Walk-behind fully hydraulic type)



With Honda engine



German MOBA laser system



With imported hydraulic pump



With imported hydraulic motor



RWJP23



RWJP23B

Type	RWJP23	RWJP23B	Type	RWJP23	RWJP23B
Engine	HONDA engine		Screed head	Hydraulic control, self-leveling	
Model	HONDA engine		Type	Hydraulic control, self-leveling	
Power	13 hp		Width	2500mm (standard)/2000mm (optional)	
Fuel tank volume	6.5L		Exciting force	500N	
Running device	Hydraulic pump and motor		Vibration frequency	50Hz	
Driving	Hydraulic pump and motor		Laser control system	Microcomputer control	
Running type	Hydraulic control, stepless speed		Control type	Microcomputer control	
Running speed	0-50m/min		Size and weight	Microcomputer control	
Working speed	5m/min		Outline dimension	2740x2695x1980mm	2780x2662x1980mm
Wheel quantity	2	3	Weight	380kg	410kg

* For the customer's benefit, we will improve product design continuously, but pardon us for not notifying you.

RWJP21/RWJP21B Concrete Laser Screed (Walk-behind electric type)



With Honda power



German MOBA laser system



With external power source



with automatic digital control system



RWJP21B



RWJP21

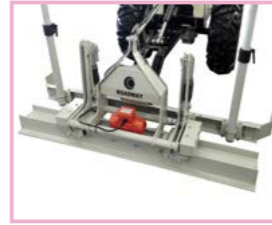
Type	RWJP21	RWJP21B	Type	RWJP21	RWJP21B
Engine	HONDA generator set		Screed head	Electrical control, self-leveling	
Model	HONDA generator set		Type	Electrical control, self-leveling	
Power	2.0kVA		Width	2500mm (standard)/2000mm (optional)	
Fuel tank volume	14.5L		Exciting force	500N	
Running device	Electrical motor		Vibration frequency	50Hz	
Driving	Electrical motor		Laser control system	Microcomputer control	
Running type	Electric control, stepless speed		Control type	Microcomputer control	
Running speed	0-36m/min		Size and weight	Microcomputer control	
Working speed	5m/min		Outline dimension	2758x2622x1980mm	2860x2622x1980mm
Wheel quantity	2	3	Weight	295kg	395kg

* For the customer's benefit, we will improve product design continuously, but pardon us for not notifying you.

RWJP20 Concrete Laser Screed (Walk-behind fully electric type)



Control panel



Screed head



Electric push cylinder



With external power source



RWJP20

Type	RWJP20	Type	RWJP20
Power system	Lithium battery	Driving speed	0-33m/min
Battery	DC24V	Working speed	5m/min
Voltage	150AH	Screed head	2500mm (standard)/2000mm(optional)
Battery capacity	8-10h	Type	Electric automatic proportional control
Working time	500N	Width	1500mm
External power	50Hz	Exciting force	500N
Voltage	220V	Vibration frequency	50Hz
Frequency	50Hz	Laser control system	
Driving system	Servo Motor	Control mode	Micro computer control
Motor	500W+500W	Size and weight	
Rated power	1500rpm	Outline dimension	1750x1662x1980mm
Rated speed		Weight	240kg

* For the customer's benefit, we will improve product design continuously, but pardon us for not notifying you.

RWJP41 Concrete Laser Screed (Remote control fully hydraulic type)



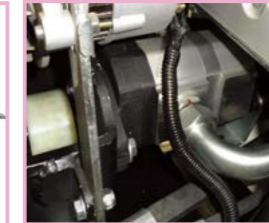
Remote control operation, safe, and high efficiency.



German MOBA laser system



Standby integrated console, intelligent control



Danfoss hydraulic pump and Poclairn motor drive, good performance



American brand hydraulic valve



With hollow aluminum alloy screed plate, strong shock resistance



LED working lamp



Type	RWJP41	Type	RWJP41
Engine	HONDA engine	Screed head	
Model	13hp/3600rpm	Type	Hydraulic control, self-leveling
Power	6.5L	Width	2500mm (standard)
Fuel tank volume	500N	Exciting force	500N
Running device	Hydraulic pump and motor	Vibration frequency	50Hz
Driving	Antiskid tyre	Laser control system	
Tyre	0-45m/min	Control type	Microcomputer control
Running speed	5m/min	Size and weight	
Working speed		Outline dimension	2800x2500x1995mm
		Weight	450kg

* For the customer's benefit, we will improve product design continuously, but pardon us for not notifying you.

RWXC31 Ride-on scraper



Fully electric working, environmental friend, suitable to work inner house



Hydraulic driving, powerful, operate flexible



High strength rubber tire, wear-resist, puncture proof



Shovel lifting and angle adjusting are all hydraulic controlled



The blade is made from alloyed material, high strength,



Patented design operating handle, comfortable



Type	RWXC31	Type	RWXC31
Power		Driving speed	0-40m/min
Storage battery	48V300AH	Scraper device	
Charging voltage	220V/50Hz	Shovel head adjustment	Double cylinders + Up/down adjust
Motor power	5kW	Dimension	
Motor speed	2800rpm	Outline dimension	1710x686x1355mm
Driving		Weight	
Driving mode	Hydraulic motor	Weight	1080kg
Control mode	Handle control, Stepless speed		

* For the customer's benefit, we will improve product design continuously, but pardon us for not notifying you.

RWQX11 High Pressure Washer

It is specially used to wash the equipment, vehicle, road surface or fence. Our washer is mainly used to wash concrete machinery, such as concrete laser screed, power trowel, ect.

Type	RWQX11
Engine model	HONDA GX160
Power	5.5hp
Working pressure	5Mpa
Max. flow	12L/min
Outline size	630x610x610mm
Weight	55kg

* For the customer's benefit, we will improve product design continuously, but pardon us for not notifying you.



RWZP11 Automatic screeding machine



Type	RWZP11	Type	RWZP11
Work		Power	0.79kW
Working speed	0.25-0.70m/min	Dimension	
Working width	2-3.2m	Total length	2500mm
Working efficiency	MAX.134m ² /h	Total width	418mm
Input		Total height	617mm
Voltage	220V	Packing size	2530x430x840mm
Frequency	50Hz	Weight	
Current	3.6A	Working weight	57kg

* For the customer's benefit, we will improve product design continuously, but pardon us for not notifying you.

RWSL12 Spreader (Boom type)



YANMAR engine



DANFOSS hydraulic variable pump



HYDRAFORCE valve



Microcomputer control



High accuracy roller



With DANFOSS plunger motor



High pressure dust suppression sprayer



Slow spreading, quick return



Automatic centering mechanism of spreader head



With LED working light



Full filled, stop immediately



Anti-slid solid tyre

Type	RWSL12	Type	RWSL12
Engine		Running	
Model	YANMAR engine	Driving	4 hydraulic drive motor
Type	Diesel engine, liquid cooled, 4 Stroke, 4 cylinder	Steering	2-wheel steering
Power	63.9kW/2500 r/min	Wheel	Anti-slid solid tyre
Lubricant L	10.2/5.7L	Driving speed	0-8km/h
Fuel consumption	252g/kWh	Working speed	15m ² /min
		Machine rotation	Hydraulic

Type	RWSL12	Type	RWSL12
Spreading		Spreading hopper sliding	200mm
Arm length	6.5m	Outrigger	4-legs, self-leveling
Spreading width	1.8m	Fuel volume	135L
Arm telescopic time	10s	Hydraulic oil volume	135L
Spreading quantity	3-7 (adjustable)	Size and Weight	
Spreading hopper volume	160kg	Outside size	5250 × 2200 × 2500mm
Storage hopper volume	165kg	Weight	7500kg

RWBL11 Concrete distributor



Remote control operating



DANFOSS hydraulic pump, valve and motor



HONDA engine



With crab type walking mode, convenient for distributor



The conveyer pipe picked up automatically by hydraulic



Distributor pipe 360° rotation, stepless speed adjustable

Type	RWBL11		
Engine		Running Speed	0-4km/h
Model	HONDA gasoline engine GX390	Distributor head	
Power	13hp	Pipe diameter	DN125
Fuel tank volume	6.5L	Pipe length	2400mm
Running		Dimension and weight	
Drive	Hydraulic pump and motor	Outline size	2470 × 1350 × 1400mm
Running type	Remote control, stepless speed	Weight	670kg

* For the customer's benefit, we will improve product design continuously, but pardon us for not notifying you.

RWVG236B / 236C Concrete Trowel

It is used to extract slurry, compact, smooth and polish the concrete surface.

Type	RWVG236B	RWVG236C
Working		
Operation mode	Ride-on	
Working width	78in.	
Working speed	80-150rpm	
Blade		
Blade quantity	8	
Blade size	350x150mm	
Fixed hole distance	4.75 in	
Engine		
Model	HONDA GX690	
Type	Gasoline, air cooled, double cylinder	
Power	22.5hp/3600rpm	
Fuel tank volume	15L	
Lubricant L	1.9L	
Fuel consumption	313g/kWh	
Dimension		
Total length	2060mm	2060mm
Total width	1040mm	1040mm
Total height	1350mm	1365mm
Packing size	2140x1100x1100mm	2140x1100x1400mm
Weight		
Weight	350kg	400kg

* For the customer's benefit, we will improve product design continuously, but pardon us for not notifying you.



Reduction box with imported turbine and special treatment



Plastic water tank



Accelerator pedal



Blade angle adjustment mechanism is hydraulically controlled and with sealed cover without cleaning



RWVG236C



Machine transitions



RWVG236B

RWVG248C Hydraulic Concrete Trowel

Type	RWVG248C
Working	
Operation mode	Ride-on (Hydraulic)
Working width	96.4in (2450mm)
Working speed	40-180rpm
Blade	
Blade quantity	10
Blade size	450x150mm
Fixed hole distance	4.75in
Engine	
Model	B&S VANGUARD 6134
Type	Gasoline, air cooled, double cylinder
Power	35hp/3600rpm
Fuel tank volume	23L
Lubricant L	2.5L
Fuel consumption	296g/kWh
Dimension	
Total length	2560mm
Total width	1300mm
Total height	1450mm
Packing size	2660x1400x1730mm
Weight	
Weight	500kg

* For the customer's benefit, we will improve product design continuously, but pardon us for not notifying you.



Hydraulic control handle, convenient and flexible,



The articulated blade angle adjustable system, to make the angle on 5 blades are the same all the time



Special designed reducer, high efficiency,



With fuel indicator, easy to monitor the fuel and refuel in time



Self-lock handle for blade angle adjusting, to ensure the correct angle all the time



Stepless speed, clutch wheel to change the speed from very slow to very fast easily

RWLG41/41B Self-cleaning Cutting Machine

A new type of environmental protection concrete cutting machine, Realize integrated operation of cutting, cleaning and dust collection.

Type	RWLG41	RWLG41B	Type	RWLG41B	RWLG41B
Engine	HONDA GX390 / B&S 25V00		Cutting		
Model	HONDA GX390 / B&S 25V00		Blade diameter	375mm	
Power	13 HP / 14 HP		Blade shaft diameter	50mm	
Start type	Electric start		Dust collector	28L	
Dimension/Weight			Run method		
Overall dimension	1650 x 650 x 1050mm		Run method	Trolley	Automatic
Working weight	230 kg	240 kg			

* For the customer's benefit, we will improve product design continuously, but pardon us for not notifying you.



Patented cutting and dust collection system,



Automatic timed cleaning of filter element design



Wide traveling wheel can work on incompletely dried floor



Easily removable dust collection box

RWXB21H Concrete Milling Machine

The machine use for milling, roughening and removing surface concrete of base concrete or old concrete ground.



Conical milling cutter head, high efficiency,



YANMAR diesel engine



DANFOSS hydraulic pump



Multifunctional control handle



American brand hydraulic valve



Intelligent control of recycle bin,



Integrated micro computer control panel



The wheel rises or falls autoly according to condition



Pressure sensor controls filter element automatic cleaning



Hydraulic power interface for other hydraulic tools

Type	RWXB21H	Type	RWXB21H
Engine	YANMAR 4TNV88	Recovery bin	
Model	YANMAR 4TNV88	Bin capacity	1 m ³
Power	35KW / 3000 rpm	Discharge time	3 min
Fuel tank volume	200 L	Milling drum	
Running device		Milling width	350 mm
Driving	Hydraulic pump and motor	Milling depth	0 - 110 mm
Tyre	Antiskid tyre	Milling drum diameter	460 mm
Running speed	0 - 5 Km/h	Size and weight	
Working speed	0 - 25 M/min	Outline dimension	4020x1820x1920 mm
		Weight	3800 kg

* For the customer's benefit, we will

improve product design continuously, but pardon us for not notifying you.

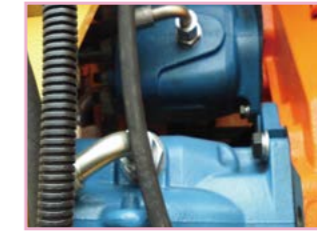
RWHM41 Automatic Curb Paver



Great function controller, automatic calculation



CUMMINS diesel engine



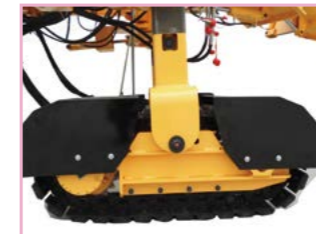
Danfoss hydraulic variable plunger pump



U.S.A. Hydrarforce brand hydraulic control valve



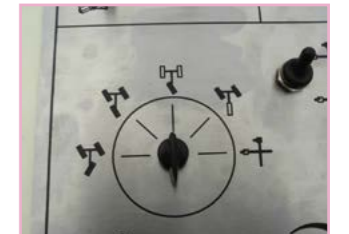
Hydraulic vibrating rod



The crawler walking mechanism with automatic tension cylinder



Patented steering system



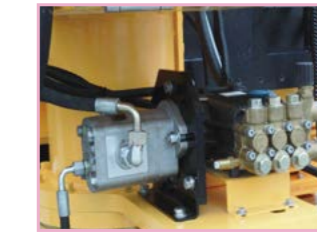
Kinds of walking modes can be switched swiftly



Pressure monitors for each work mechanism



The mold hanged, dismantled hydraulically



Hydraulic high pressure washing pump



Italy brand quick plugs for external connections

Type	RWHM41	Type	RWHM41
Engine		Driving mode	By hydraulic
Model	Cummins QSF 3.8	Steering mode	Collaborative/y\Yaw/Front wheel/Rear wheel/Automatic
Type	Diesel engine, liquid cooled, 4 Stroke, 4 cylinder	Traveling speed	0-30m/min
Power	104kW/2200 r/min	Working speed	0-15m/min
Fuel consumption	215g/kWh	Mold	
Traveling system		Mold traverse adjustment	1000mm
Traveling mode	By crawler	Mold height adjustment	400mm

* For the customer's benefit, we will improve product design continuously, but pardon us for not notifying you.

Type	RWHM41	Type	RWHM41
Max. width of the mold	1500mm	Machine height adjustment	
Vibrating rod		Hydraulic height adjustment	980mm
Hydraulic vibrating rod port	6	Mechanical height adjustment	300mm
Volume		Dimension	
Fuel tank volume	195L	Transport size	5700x2400x2500mm
Hydraulic tank volume	230L	Weight	
Water tank volume	600L	Weight	11700kg

* For the customer's benefit, we will improve product design continuously, but pardon us for not notifying you.

RWHM31/31B/31C/31BC Automatic Curb Paver



Crawler walking to make high climbing ability and stable at a slow speed.



Yanmar diesel engine



HONDA gasoline engine



Integrated micro computer control panel



Hydraforce hydraulic integrated valve group



Danfoss hydraulic pump



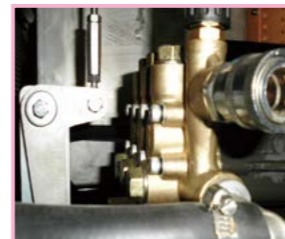
Hydraulic vibrating rod



High sensitivity tilt sensor, to control direction



Eaton driving motor



High pressure washing pump



Germany DEUTSCH connectors



Ingeniously designed movable seat for rest

Type	RWHM31	RWHM31B	RWHM31C	RWHM31BC	Type	RWHM31	RWHM31B	RWHM31C	RWHM31BC
Engine					Exciting force	11kN(under 10000rpm)			
Model	HONDA GX630		Yanmar 3TNV80		Control system				
Type	Gasoline engine, air cooled, 2 cylinder		Diesel engine, water cooled, 3 cylinder		Control mode	Auto/Manual			
Power	20hp/3600 rpm		25hp/3000 rpm		Automatic control	Steering, Transverse slope and Longitudinal slope by high accuracy sensor			
Fuel tank volue	60L		60L		Clean system				
Lubricant L	1.5L		3.4L		Power	Hydraulic motor			
Fuel consumption	313g/kWh		281g/kWh		Theoretical flow	20L/min			
Traveling system					Theoretical pressure	7Mpa			
Driving	Hydraulic orbit motor	Plunger motor	Hydraulic orbit motor	Plunger motor	Working				
Wheel	Solid tyre	Front is pedrail back is solid tyre	Solid tyre	Front is pedrail back is solid tyre	Speed	0-15m/min			
Speed	0-70m/min	0-50m/min	0-70m/min	0-50m/min	Mold size	MAX. Width 80cm* MAX. Height 50cm			
Vibration system					Dimension and Weight				
Vibrating rod	Hydraulic vibrating rod				Overall dimension	2660x1970x1450mm	2970x1970x1450mm	2810x1970x1450mm	3120x1970x1450mm
Nominal amplitude	1.5mm				Weight	1200kg	1300kg	1300kg	1400kg
Vibrating frequency	Adjustable								

RWHM11 Hand-push Curb Paver

The curb paver is compact and easy to operate, screw extrudes the concrete to make curbs, save time and effort, specially for the curb of the gardens, parks, community and flower bed.



Type	RWHM11	Type	RWHM11
Working		Lubricant L	0.6L
Working type	Walk-behind type	Fuel consumption	313g/kWh
Work speed	1m-2m/min	Size	
Work mold	As per customer's requirement	Total length	1670mm
Engine		Total width	700mm
Model	HONDA GX160	Total height	1100mm
Type	Gasoline engine, air-cooled, 4stroke, OHV, single cylinder	Packing size	1560x810x970mm
Power	5.5hp/3600rpm	Weight	
Fuel tank volume	3.6L	Weight	160kg

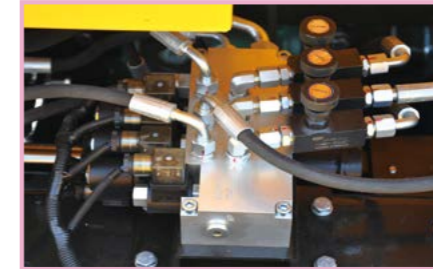
* For the customer's benefit, we will improve product design continuously, but pardon us for not notifying you.

RWHM21/21C Automatic Curb Paver

This is a new kind of curb paver, hammer feeding, with manual and automatic control systems. It is a high-tech machinery, integrative technique of mechanics-electronics-hydraulics, with advanced sensors, the machine itself can adjust the level and straight, makes the construction easily. Molds can be dismantled and changed in order to meet the construction requirements.



With Honda gasoline engine, or famous China diesel engine



Imported hydraulic valve



Automatic walking sensor, can correct direction, error within 1mm.



Type	RWHM21	RWHM21C	Type	RWHM21	RWHM21C
Working			Lubricant L	1.12L	1.65L
Working type	Automatic type		Fuel consumption	374g/kWh	280g/kWh
Work speed	2m-3m/min		Size		
Work mold	As per customer's requirement		Total length	2120mm	
Engine			Total width	1180mm	
Model	HONDA GX390	186F	Total height	970mm	
Type	Gasoline, air-cooled, single cylinder	Diesel, air-cooled, single cylinder	Packing size	2300x1040x1200mm	
Power	13hp/3600rpm	8hp/3600rpm	Weight		
Fuel tank volume	6.5L	5.5L	Weight	710kg	690kg

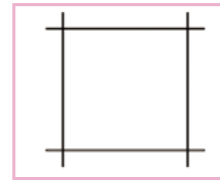
* For the customer's benefit, we will improve product design continuously, but pardon us for not notifying you.

RWYQ21/22 Automatic Circular Cutting Machine

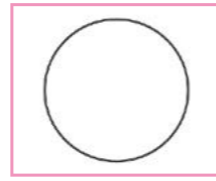
It is mainly used for repairing and changing sewer well cover in the sectors of municipal engineering, telecom, gas and water supply.

- Equipped with imported HONDA engine.
- Remote control operation, low labor intensity.
- The base can work on the sewer cover without fixing.
- The base is self-leveling for slant sewer cover, the thickness can be set freely, the machine will recover automatically after up to setting thickness.
- The cutting diameter can adjust
- The draw bar can adjust for different height tractor.

Traditional cutting way

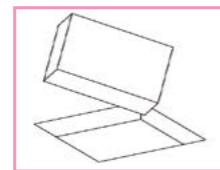


This machine cutting way

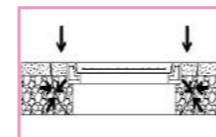
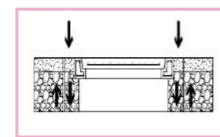
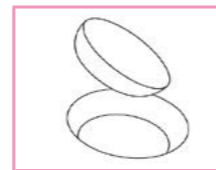


The pictures for proving: the cutting volume is less 40% than traditional cutting way, both cleaning and refilling volume are less 50% than traditional cutting way.

Traditional cutting way



This machine cutting way



The pictures for proving: Vertical shape formed after traditional cutting, but circular arc "Bowl" shape formed after cutting by this machine, which can support backfill and sewer well cover better and make sure sewer well cover recovery to initial carrying capacity and have longer life.



RWYQ22

RWYQ11/11C Circular Cutting Machine



Special arc blade



Indicator of cutting depth



Cutting track with level indicator



Cutting track with idler wheel, can transfer Easily.



Transition the machine easily by trolley

Type	RWYQ22 (Hydraulic type)	RWYQ21	RWYQ11	RWYQ11C
Working				
Speed	---	---		50cm/min
Cutting method	Remote control	Remote control		Trolley
Cutting diameter	φ 760-1880mm (adjustable)	φ 760-1880mm (adjustable)		φ 1200mm (φ 1300mm, φ 1400mm, φ 1500mm optional)
Cutting depth	0-110mm	0-145mm		0-150mm
Blade	φ 400mm	φ 400mm		SR600mm/SR700mm
Bore diameter	50mm	50mm		50mm
Water tank volume	60L	60L		33L
Engine				
Model	HONDA GX690	HONDA GX630	HONDA GX390	KM186F
Dimension				
Total height	1240mm	1220mm		1830mm
Total width	1020mm	1020mm		1620mm
Total height	1700mm	1700mm		900mm
Weight				
Weight	530kg	440kg	215kg	225kg

* For the customer's benefit, we will improve product design continuously, but pardon us for not notifying you.

RWLG11/12 Soft cutting machine



Honda Engine, excellent performance



Patented cutter cover, suitable for the soft concrete ground



With American brand EATON hydraulic drive unit, stepless speed change,



Special designed soft rubber wheel, suitable to walk on soft concrete ground



The cutting saw lifting system, electrical controlled,



Long-distance controlled guide rod, ensure the cutting quality

Type	RWLG11	RWLG12	Type	RWLG11	RWLG12
Cutting depth	50mm		Fuel tank volume	6.5L	40L
Run method	Automatic type		Lubricant L	0.6L	1.9L
Max. cutting speed	40m/min		Fuel consumption	374g/kWh	313g/kWh
Blade	350mm		Dimension	1790x750x1220mm	
Engine			Packing size	1790x750x1220mm	
Model	HONDA GX390	HONDA GX630	Weight		
Type	Gasoline, air-cooled, single cylinder	Diesel, air-cooled, double cylinder	Weight	165kg	180kg
Power	13hp/3600rpm	20hp/3600rpm			

* For the customer's benefit, we will improve product design continuously, but pardon us for not notifying you.

RWJC11/11A/12/13 Dust Suppression Sprayer

It is used for spraying and falling dust on the occasion of house demolition, mixing stockyard and engineering construction.

- Remote control, intelligent control.
- Double group wind impeller made of aviation aluminum alloy.



The angle of the fan which made of aircraft grade aluminum can be adjustable, strong wind, good kinetic balance



Famous brand LS/3 electric devices, stable quality performance, very suitable for the outdoor working conditions



Scientific designed stainless steel sprayer, with good performance of atomization, falling dust, and saving water



Well-known brand high pressure water pump, high efficiency, long lifespan

Type	RWJC11	RWJC11A	RWJC12	RWJC13
Horizontal range	40m		60m	
Horizontal rotation angle	0-350° (Manual adjust)		0-350° (Electric automatic adjust)	
Elevation angle	-5° --+35° (Manual adjust)		-10° --+50° (Electric automatic adjust)	
Operation mode	Fixed operation			Remote control operation
Move mode	Fixed type			
Machine power	External power			
Wind volume	18000m ³ /h		25000m ³ /h	
Wind pressure	980Pa			
Machine power	8.7kW	8.9kW	12kW	
Weight	220kg	230kg	370kg	370kg

* For the customer's benefit, we will improve product design continuously, but pardon us for not notifying you.

RWQ711 VACUUM EXCAVATOR

It integrates multiplefunction such as material suction and collection, nondestructive and loosening. Vacuum excavator have a history of proven performance in:

- Underground utility and line location, Potholing, Keyholing,
- Daylighting underground infrastructure, Water valve clean out.
- Precise excavations, Excavation in frozen ground.
- Pipe and line installation, Excavating in tight locations



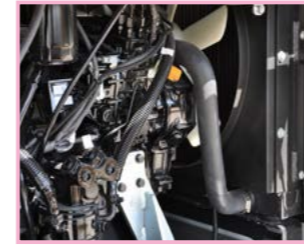
Hydraulic Cutter



Hydraulic Breaker



Vacuum Excavator



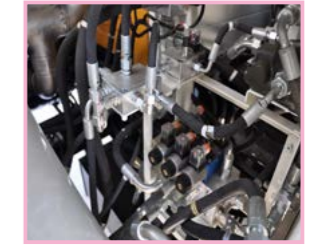
Yanmar diesel engine



Danfoss hydraulic pump



Danfoss hydraulic motor



Sun and HydraForce valve



Powerful Roots blower



Imported water pump



Italian brand remote control



Multifunctional instrument



With low suction interface, increase pumping depth



Twin channel cyclone separator



Suction pressure safety valve



Four-point linkage lock mechanism



Patented operating arm



Hydraulic tools interface



Universal coupling of suction pipe



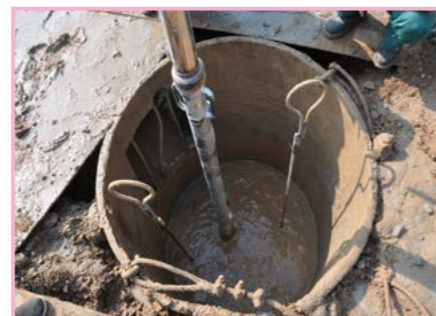
With different size digging tools

Type	RWKW11	Type	RWKW11
Working		Run	
Vacuum pressure	-54 kpa	Speed	0 - 30 Km/h
Digging depth	2M / 3.5M	Climbing capacity	30%
Suction depth	4.5M	Turning radius	6500mm,
Stoge tank volume	1.8m ³	Turning mode	steering wheel
Rubber hose diameter	102mm	Cab capacity	1 person
Water system		Axles	2
Water tank volume	800L	Wheel base	2810mm
Water pump pressure	25Mpa	Wheel tread	1610 / 1540mm (Forward / back)
Flow of water pump	21 L/Min	Quantity of tires	6
Engine		Tyre size	6.5R16
Model	YANMAR 4TNV98T	Weight and Size	
Type	Diesel, liquid cooles, four cylinder	Equipment weight	5400kg
Powe	63.9 kw/2500rpm	Working weight	8000kg
Fuel tank volume	120L	Outline dimension	5400x2090x2825mm
Optional	Hydraulic Cutter, Hydraulic Breaker, Cab Air Conditioner		

* For the customer's benefit, we will improve product design continuously, but pardon us for not notifying you.

RWQ5130TWXZZ VACUUM EXCAVATOR

Vacuum excavator used for earthwork excavation in underground pipeline maintenance operations. Compared to traditional methods, it has advantages such as safety, speed, environmental protection, labor saving, and reduced labor intensity.



The machine is sucking up mud at the construction site



JAC or HOWO vehicle chassis



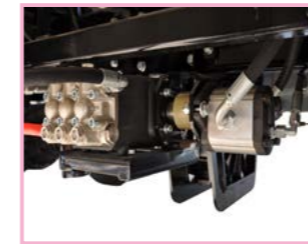
Danfoss hydraulic pump



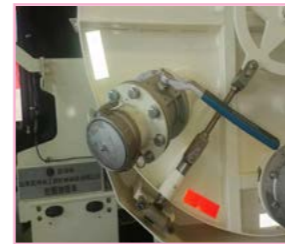
Sun and HydraForce valve



Powerful Roots blower



Imported water pump



Imported water pump



Twin channel cyclone separator



Suction pressure safety valve



Four-point linkage lock mechanism



Universal coupling of suction pipe



With different size digging tools



Equipped with fire hose joints

Type	RWQ5130TWXZZ	Type	RWQ5130TWXZZ
Working		Vehicle Chassis	SINO-TRUK
Vacuum pressure	-54 kpa	Manufacturer	ZZ1257N464GF1
Digging depth	4 M	Engine Brand	WEICHAI
Suction depth	8 M	Engine Model	WP4.1NQ190E61
Rubber hose diameter	1.8m ³	Power	140 KW
Storge tank		Emission Standard	China VI
Volume	2.5m ³	Fuel Tank Volume	150 L
Tilt angle	42°	Number of Aeles	2
Water system		Tire Type	9.00R20 16PR
Water pump pressure	25Mpa	Number of Tires	6
Flow of water pump	21 L/Min	Vehicle	
Excavation arm system	63.9kw/2500rpm	Total Weight	13000kg
Rotation angle	320°	Equipment Weight	10230kg
Operating radius	4800mm	Vehicle Size	6840 × 2400 × 3400mm

RWQ621 Pothole Patcher

A new approach to road repairs. Integrated continuous and rapid construction of asphalt thermal regeneration, paving and compaction.



Paving and Compaction Part



Suspension Rollers and Plate Compactors



Asphalt Loading Part

Type	RWQ621	Type	RWQ621
Engine		Loading system	
Model	Cummins QSB6.7-C260-31	Loading type	Rubber belt conveyor
Type	EU stage IIIAr	Conveyor belt section	3
Fuel tank volume	270 L	Conveyor belt length	4000 mm
Fuel consumption	215g/kWh	conveyor belt width	500 mm

※ For the customer's benefit, we will improve product design continuously, but pardon us for not notifying you.



1. Cummins high pressure common rail engine



2. Danfoss hydraulic pump and hydraulic motor



3. Multi-function handle, easy to operate



4. Italy RIELLO Burner



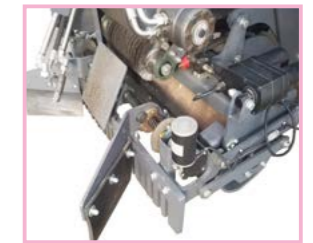
5. Hydraulic Control Valve set with SUN, Hy-draforce Valve element



6. Patented planetary agitator caldron,



7. The cab can be tilted forward for easy maintenance



8. Adjustable spreading width



9. Twin channel cyclone separator



10. With high-pressure air cleaning and emulsified asphalt nozzle



11. Operation, monitoring, fault alarm, All controlled by microcomputer



12. With high-pressure cleaning liquid spray gun

Type	RWQ621	Type	RWQ621
Heating kettle		Dedusting power	Hydraulic motor
Volume	0.6 m ³	Generator	
Heating efficiency	4000 - 6000 kg/h	Power	5 KW
Heater power	276.3 KW	Voltage	220V / 50Hz
Heater fuel	Diesel	Power	Hydraulic motor
Heater fuel consumption	23.3 kg/h	External power output port	
Temperature control system	Computer control	Hydraulic output port	2
Weighing system	Computer control	Electricity output port	25A/3P
Paving compaction		Vehicle chassis	
Roller width	900 mm	Steering control	Steering wheel
Boom length	1200 mm	Speed gears type	Auto gearshift
Left-Right swing angle	5°	Tire type	295R80-22.5
Rise and full amplitude	280 mm	Max speed	24 km/h
Control type	Handle control	Brake system	Brake axle and brake motor
Dedusting mechanism		Vehicle size	7220x2880x3100 mm
Dedusting type	Air filtration and Water spray	Equipment weight	11630 kg

※ For the customer's benefit, we will improve product design continuously, but pardon us for not notifying you.

RWQ5126TYH21 Asphalt Hot-recycling Paver



A new approach to road repairs, integrated continuous and rapid construction of asphalt thermal regeneration, paving and compaction.



Patented planetary agitator caldron



Patented loading design can continuous loading with milling machine



Patented paving mechanism for remote asphalt paving



Twin channel cyclone separator



Automatic weighing control feeding



With high-pressure emulsified asphalt spray gun



9. DANFOSS hydraulic pump and hydraulic motor



10. Hydraulic generator



11. Italy RIELLO Burner



12. Hydraulic Control Valve set with SUN, Hy-draforce Valve element

Type	RWQ5126TYH21	Type	RWQ5126TYH21
Heating kettle		Feeding way	Rubber conveyor belt
Volume	0.6 m ³	Generator	
Heating efficiency	3500 – 5000 kg/h	Power	5 KW
Heater power	276.3 KW	Motive power	Hydraulic motor
Heater fuel	Diesel	Vehicle	SINOTRUK
Heater fuel consumption	23.3 kg/h	Brand	HOWO
Temperature control system	Computer control	Max speed	89 km/h
Weighing system	Computer control	Vehicle size	7867x2395x3307mm
Paving compaction		Equipment weight	11150 kg
Paving radius	3 M	Number of Passengers allowed	3
Boom length	4 M	Number of aeles	2
Control type	Remote control	Tire type	9.00R20
Paving mechanism		Dust removal mechanism	
Paving diameter	3 M	Method	Twin channel cyclone separator
Paver section	120L	Power	Hydraulic motor
Paving method	Remote control	Options	Single drum roller, Hydraulic power

※ For the customer's benefit, we will improve product design continuously, but pardon us for not notifying you.

RWQ5250TFSZZ/911 Binding Agent Spreader

Binding agent spreader are mainly used for spreading cement, white ash, and other powders or small aggregates during construction, they also can be utilized for spreading fertilizers in agriculture. This machine is intelligent in operation, with uniform material distribution and high environmental friendliness



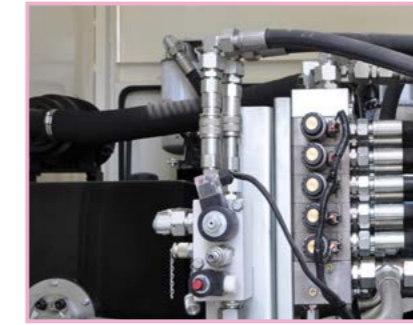
RWQ5250TFSZZ



RWQ911



Independent YANMAR or QUANCHAI diesel engine



Patented hydraulic control valve group can make functional matching more accurate and facilitate troubleshooting



Spiral feeder equipped with Danfoss motor and gearbox, make the feeding more precise



The bearings of the spiral feeder are protected by multiple high-pressure shaft seals, long service life



The powder spreader is intelligently controlled by a proportional valve and controller, and equipped with danfoss motor



Equipped with a high suction dust collector, reducing dust during operation



Set up four powder spreading gates to adapt to operations of different widths



Set material level sensor in material box, control the feeding amount



Install a camera, easy to observe the distribution of materials and obstacles behind the vehicle

Type	RWQ5250TFSZZ	RWQ911	Type	RWQ5250TFSZZ	RWQ911
Powder Spreading			Vehicle Chassis		
Material Volume	17 m ³		Manufacturer	SINO-TRUK	-
Spiral Conveyor	4		Chassis Model	ZZ1257N464GF1	-
Spreading Width	0.6/1.2/1.8/2.4m		Engine Model	MC07.34-60	-
Spreading Density	5-60kg/m ²		Type	Diesel	-
Dust Collector Box			Power	251KW	-
Filter Material	3M		Emission Standard	China VI	-
Cleaning Mode	High pressure gas blowback		Fuel Tank Volume	400L	-
Fan Power	Gear motor		Number of Aeles	3	2
Engine			Tire Type	12.00R20 16PR	650/50-22.5
Model	YANMAR 3TNV88 or Quanchai/V20-029		Number of Tires	10	4
Fuel Type	Diesel		Vehicle		
Power	28kw/2600rpm		Total Weight	25000kg	
Emission	China IV		Equipment Weight	16200kg	8900kg
Monitor	YES	NO	Vehicle Size	9730 × 2500 × 3740mm	8140 × 2500 × 3690mm

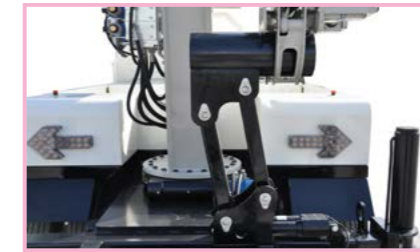
RWQ811 Remote Control Tree Trimmer



Used for pruning tall trees in streets and gardens;
Clearing tree branches near elevated cables;
Emergency rescue and disaster relief;



1. Multidimensional adjustable trimmer



2. Automatic lifting support frame



3. YANMAR engine



7. Italian brand remote control



5. Danfoss Hydraulic Motor



6. HYDRAFORSE SUN Valve



7. Italian brand remote control



8. Multifunction Instrument



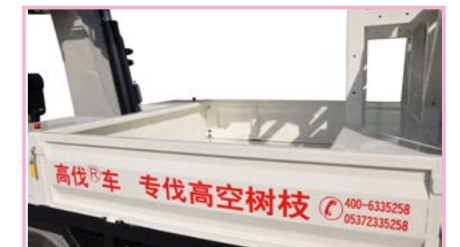
9. Electronic accelerator pedal electronic brake, easy to control



10. Multi-function handle, easy to operate



11. Shock absorbing seat, equipped air bag, driving comfort



12. Tool storage compartment

Type	RWQ811		
Logging structure	Turning radius	6500mm	
Logging diameter	Turning mode	steering wheel	
Arm span height	Cab capacity	1 person	
Saw blade speed	Axles	2	
Engine	Wheel base	2800mm	
Model	Wheel tread	1610mm/540mm (forward/back)	
Type	Quantity of tyre	6	
Power	Tyre specification	7.0R16	
Fuel tank volume	Weight and size		
Chassis	Equipment eight	5850kg	
Speed	Work weight	6100kg	
Climbing capacity	Outline dimension	5580 × 2090 × 2900mm	
Optional	Engine, Cab air-conditioning, Electric chainsaw, Diesel chainsaw		

* For the customer's benefit, we will improve product design continuously, but pardon us for not notifying you.