



上海运营中心：曹安公路3652号
上海改装基地：嘉定区金园二路501号
昆山制造基地：昆山开发区洪湖路788号



上海冶坤工程机械有限公司
Shanghai Yekun Construction Machinery Co., Ltd
冶坤工程机械（苏州）有限公司
Yekun Construction Machinery (Suzhou) Co., Ltd

地址：上海市嘉定区曹安公路3652号 邮编：201812
苏州市昆山开发区洪湖路788号 邮编：215333
Add: No.3652 Caoan Road, Jiading District, Shanghai, China
No.788 Honghu Road, Kunshan Development Zone, Suzhou
电话(Tel): 021-69188890 客服热线: 400-009-2829
Http://www.vibracn.com
E-mail:manager@vibracn.com



VIBRA
VIBRATORY HAMMER & SERVICE SUPPLIER



引领行业未来的创新与变革

液压打拔桩机
HYDRAULIC PILE DRIVER



上海冶坤工程机械有限公司
Shanghai Yekun Construction Machinery Co., Ltd
冶坤工程机械（苏州）有限公司
Yekun Construction Machinery (Suzhou) Co., Ltd

上海冶坤工程机械有限公司是一家专业从事振动沉拔桩机设备生产、销售及服务的技術型企业，产品以新兴的高速液压打拔桩机为主以及周边附件，设备广泛应用于各类基础工程建设中。

公司经过较短时间的发展便赢得客户认可，实现年销售额成倍增长。以VIBRA威博瑞品牌行销全国并出口海外。

2019年5月成立冶坤工程机械（苏州）有限公司，做为新的制造基地，规划年产能300台。

Shanghai Yekun Construction Machinery Co., Ltd. is a technical enterprise specializing in the production, sales and service of vibratory pile driver and extractor. Its products are mainly high-speed hydraulic pile driver and its surrounding accessories. The equipment is widely used in various kinds of infrastructure construction.

After a relatively short period of development, the company has won the recognition of customers and achieved the double growth of annual sales. VIBRA weiboro brand marketing nationwide and exported overseas.

In May 2019, Yekun Construction Machinery (Suzhou) Co., Ltd. was established as a new manufacturing base with an annual capacity of 300 units.

2018年公司与瑞基（中国）销售中心达成合作，全面代理瑞基品牌螺旋钻机及附属产品，将其带入钢板桩引孔领域，为客户提供地质硬、桩难打的完美解决方案，使瑞基引孔机配套液压打拔桩机成为一种潮流。

In 2018, the company and the Auger Torque (China) sales center reached a cooperation, fully acting as the Auger Torque brand screw drill and its ancillary products, bringing it into the field of steel sheet pile pilot hole, providing customers with perfect solutions for geological hard and difficult pile driving, making it a trend for Auger Torque drilling machine to match with hydraulic pile driving and pulling machine.

我们的理念 Our Idea:

以高度的责任感和使命感来研发、制造每一台设备。
To develop and manufacture each equipment with high responsibility and sense of mission.

发展目标 Development Target:

引领行业未来的创新与变革。
Lead the industry innovation and revolution in the future.

价值观 Value:

实现客户价值为自我价值的体现。
Reflect the clients' value as our own value.

安全与品质 Safety and Quality:

极高的安全性为制造基础，持久稳定的品质为产品生命。
Take the high safety as the manufacture base and take the lasting and stable quality as product life.

环保与贡献 Environment and contribution:

以极低的能耗实现最大的功效，为绿色环境作出贡献。
To realize the biggest effect by lowest energy and make contribution to natural environment.



代理品牌
Agency of Brand



英国瑞基



德国金斯霍夫



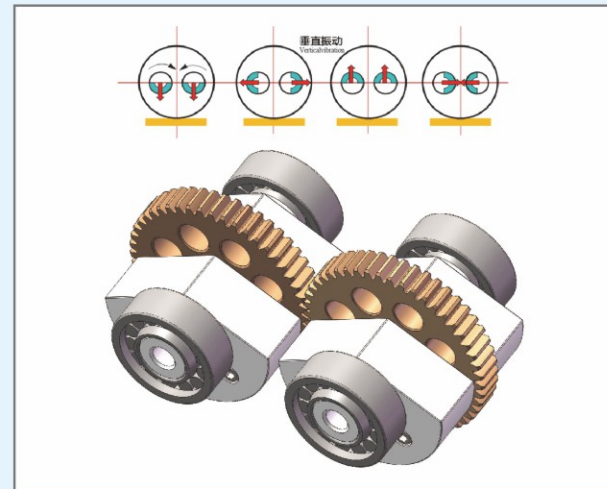
工作原理

振动沉拔桩机是利用机体产生的高频振动，通过夹具将振动传递给桩体，使桩体周围土壤产生液化，连接结构发生变化，减少桩体与土壤的摩擦阻力，再以挖掘机的作用力将桩体沉入或拔出土壤，完成施工作业的过程。高频振动是利用挖掘机的液压力驱动桩机液压马达，液压马达带动二个偏心轴对向高速旋转，偏心轴水平方向的力相互抵消，无振动；垂直方向的力相互叠加，产生垂直的高频振动。

Working principle

Hydraulic vibrating pile driver take the advantage of high frequency vibration generated by motor and transit the vibration force to the hydraulic vibrating pile driver for the surrounding soil liquefying & break its structure to reduce the friction; then piling or drilling the pile from the soil ground via excavator. The high frequency vibration is driven by the hydraulic motor of the pile machine using the hydraulic power of the excavator.

The hydraulic motor drives the two eccentric axes to rotate at high speed in opposite direction. The horizontal force of the eccentric axis cancels each other without vibration. The vertical forces add up to each other, creating a vertical high-frequency vibration.



应用范围

- 1.通过配合不同夹具可沉拔木桩、水泥桩、钢板桩、钢管桩、H型钢、钢护筒等；
- 2.几乎任何品牌的6吨-60吨挖掘机皆可适用安装；
- 3.广泛运用于河道堤防、房屋地基、市政管网、高架桥梁、光伏桩基等基础施工领域。

Application scope

- 1.By cooperating with different clamps, it can sink and pull out wood pile, cement pile, steel sheet pile, steel pipe pile, H-beam steel, steel shield, etc;
- 2.Almost any 6-60 ton excavator of any brand can be used for installation;
- 3.It is widely used in watercourse embankment, house foundation, municipal network, bridge, photovoltaic pile and other foundations construction fields.

机械特点

- 1.控制系统采用集成式进口控制阀，各动作可独立控制，方便维护与检修；
- 2.振动频率两级可控，二级振动为双泵合流，激振力大幅提升，克服特殊地质；
- 3.小型化、轻量化的尺寸设计，让狭小区域的施工变成可能；
- 4.利用挖掘机液压系统，不需外接动力源，节省燃油费和运输费；
- 5.操作简单易学，具有挖掘机操作基础的司机加以练习即可操作。

Machinery characteristics

- 1.The control system adopts integrated import control valve, each action can be controlled independently, convenient for maintenance and check;
- 2.The vibration frequency is controlled at two stages, and the second stage vibration is the confluence of double pumps, which greatly increases the excitation force and overcomes the special geology;
- 3.Mini and light weight design make application flexible;
- 4.Taking the advantage of the excavator hydraulic system without other driving system requirement, which save fuel oil and transportation cost;
- 5.The operation is simple and easy to learn. The driver who has the operation foundation of excavator can operate it with practice.

迷你系列 Mini series

FV-70、100、150型

迷你液压打桩机为本公司独创产品，它的诞生填补了行业空白；改变了小型挖掘机不能改装打桩机的历史；解决了小型基础桩无法机械化施工的难题。此系列机型为新农村改造的基础工程施工做出了杰出贡献。

Mini hydraulic pile driver is an original product of our company. Its birth fills in the blank of the industry, changes the history that small excavators cannot refit pile drivers, and solves the problem that small foundation piles cannot be mechanized construction. This series of machines have made outstanding contributions to the foundation engineering construction of new rural reconstruction.

设备优点 Equipment advantage:

- 1.结构超小型、轻量化，振动力最大化；
The structure is super small and lightweight, and the vibration force is maximized;
- 2.升级为第四代机型，更合理的机械结构，整机稳定性极高；
Upgrade to the fourth-generation model with more reasonable mechanical structure and high stability;
- 3.可在狭窄的河道、房屋地基等地方施工，可打拔钢板桩、水泥桩、木桩等。
It can be constructed in narrow river channel, house foundation and other places, and steel sheet pile, cement pile and wood pile can be driven and pulled out.

匹配机型：6-18吨挖掘机

Matching model: 6-18t excavator

光伏桩系列 Photovoltaic pile series

FV-280、330、350L型

针对国家大力发展的光伏产业，我公司研发了多款光伏桩专用机型，也是唯一一家为此行业量身定制桩机的制造厂家。此系列机型突破了传统中型桩机振动力小、施工效率低的技术瓶颈，实现了专用型号桩机匹配相同吨位挖掘机超越同级的打桩能力，从而节省设备及燃料成本，提高施工效率。

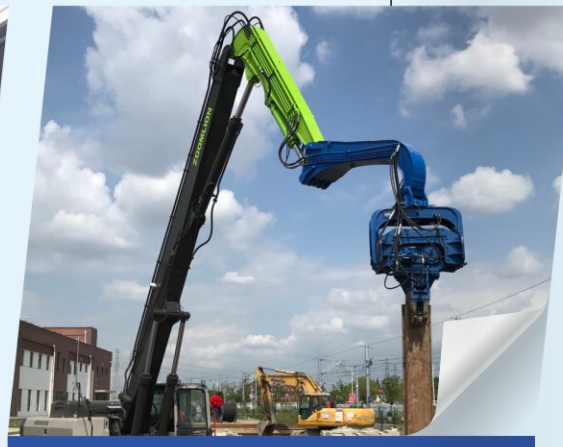
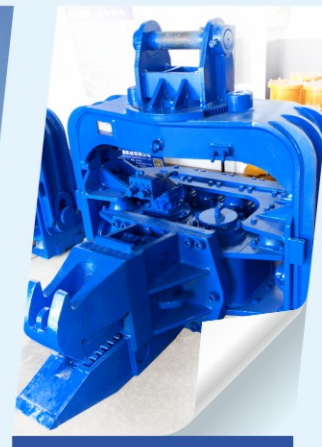
Aiming at the photovoltaic industry vigorously developed by our country, our company has developed a number of special models for photovoltaic pile, and is also the only manufacturer of customized pile machine for this industry. This series of machines break through the technical bottleneck of small vibration force and low construction efficiency of traditional medium-sized pile drivers, and realize that the special-purpose pile drivers match with excavators of the same tonnage, surpass the piling capacity of the same level, so as to save the cost of equipment and fuel and improve the construction efficiency.

设备优点 Equipment advantage:

- 1.振动力大、结构紧凑、总重量轻；
Large vibration force, compact structure and light total weight;
- 2.整机配置高，由国际一流品牌液压马达提供动力；
The whole machine has high configuration and is powered by international first-class brand hydraulic motor;
- 3.德国轴承作支撑，核心部件均为进口一线品牌。
German bearings as the support, the core components are imported first-line brands.

匹配机型：20-38吨挖掘机

Matching model: 20-38t excavator



拉森桩系列 Lassen pile series

匹配机型：40-60吨挖掘机
Matching model: 40-60t excavator

FV-350、400型

此系列机型对整体设计和制造水平有更高的要求。借鉴欧美大型液压振动锤的先进技术和我们多年从业经验研发出独树一帜的箱体结构，具有极高的可靠性，轴承的平均使用寿命更长，在同行业领先。12~15米拉森钢板桩施工是市场的主流，我们提供多种偏心组可供选配，针对各部件进行强度优化，具备更高的安全性和对各种地质条件的广泛适应性。

This series of models have higher requirements for overall design and manufacturing level. Learning from the advanced technology of large-scale hydraulic vibration hammer in Europe and America and our many years of experience, we have developed a unique box structure with high reliability, longer average service life of bearings, leading in the same industry. The construction of 12-15m Larsen steel sheet pile is the mainstream of the market. We provide a variety of eccentric groups for selection and strength optimization for each component, which has higher safety and wide adaptability to various geological conditions.

设备优点 Equipment advantage:

1. 振动频率高、激振力大、各结构件强度高；
The vibration frequency is high, the exciting force is large, and the strength of each structural part is high;
2. 超重型铸钢夹具，加大油缸及连杆，可靠性极高；
Super heavy cast steel fixture, enlarged oil cylinder and connecting rod, high reliability;
3. 整机配置高，德国力士乐振动马达，核心部件均为进口一线品牌。
The whole machine configuration is high, and the core parts of Rexroth vibration motor are imported first-line brands.

技术参数 Technical parameter:

项目Item	型号Model	FV-100	FV-150	FV-250	FV-280	FV-300	FV-330	FV-350L	FV-350	FV-400
振动频率 Vibration Frequency	rpm	2500	2500	2800	3200	3200	3200	3200	3200	3200
工作压力 Operation Pressure	Mpa	30	30	32	32	32	32	32	32	32
激振力 Centrifugal Force	kn	117	172	265	335	350	372	435	455	485
最大桩长 Max. Pile Length	m	6	8	10	12	12	12	15	15	18
副臂重量 Arm Weight	kg	160	260	500	500	670	670	670	750	750
锤头重量 Hammer Weight	kg	850	1100	1700	1900	2100	2300	2400	2600	2700
配合挖机 Excavator	T	7-12	12-17	20-30	20-30	30-35	33-40	35-40	40-45	45-60

台湾锤系列 Taiwan hammer series

匹配机型：27-70吨挖掘机
Matching model: 27-70t excavator

PCF-330、350、450、500型

此系列机型很受客户青睐，与主流台湾锤机箱体结构一致，零配件具备互换性，箱体轴承坏了易于日常维修。装配式箱体结构对材料强度、焊接工艺、加工精度要求更高。我们在制造各个环节有严格把控，确保质量稳定。我们制造成功目前最大型号PCF-500型，与卡特365匹配。

This series of machines are very popular with customers. The structure of the box body is consistent with that of the mainstream Taiwan hammer. The spare parts are interchangeable. The box bearing is broken and easy to be maintained. The fabricated box structure has higher requirements for material strength, welding process and machining accuracy. We have strict control in all aspects of manufacturing to ensure stable quality. We have successfully manufactured the largest model pcf-500, which matches with Cat 365.

设备优点 Equipment advantage:

1. 振动频率高、激振力大、各结构件强度高；
The vibration frequency is high, the exciting force is large, and the strength of each structural part is high;
2. 超重型铸钢夹具，加大油缸及连杆，可靠性极高；
Super heavy cast steel fixture, enlarged oil cylinder and connecting rod, high reliability;
3. 整机配置高，德国力士乐振动马达，核心部件均为进口一线品牌。
The whole machine configuration is high, and the core parts of Rexroth vibration motor are imported first-line brands.

技术参数 Technical parameter:

项目Item	型号Model	PCF-300	PCF-330	PCF-350	PCF-450	PCF-500
振动频率 Vibration Frequency	rpm	3500	3300	3500	3300	3200
工作压力 Operation Pressure	Mpa	32	32	32	32	32
激振力 Centrifugal Force	kn	385	420	470	535	585
最大桩长 Max. Pile Length	m	12	12	15	18	21
副臂重量 Arm Weight	kg	750	750	750	820	820
锤头重量 Hammer Weight	kg	2750	2850	2950	3150	3350
配合挖机 Excavator	T	27~30	33~38	40~45	47~55	55~70

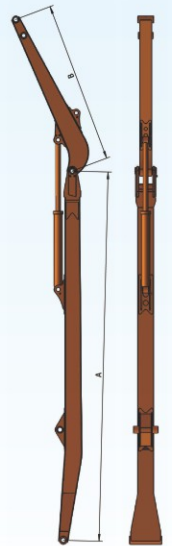
加长臂改装定做 Big arm customized:

1. 采用高强度钢板焊接，不易变形和开裂；
Using of high strength steel for weld to prevent easily bending and broken;
2. 各连接轴套选用加高加厚合金套，超耐磨、寿命长；
Choosing the higher and thicker alloy cover for the connecting axle, which has wear-resisting features and a longer life span;
3. 挖机工作管路及打桩机管路合理排布，接头采用氩弧焊接；
Reasonable layout for the hydraulic pipe to match with the excavator arrangement. All joint-points are welded by argon-arc.

4. 与原装臂一致的润滑供油系统，方便加油黄油，确保使用寿命。
Designing with the same lubrication system as the excavator, which is convenience to lubrication and length the life span.

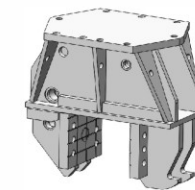
技术参数 Technical parameter:

项目Item	型号Model	CB-12	CB-15	CB-18
大臂长度 Big Arm Length	m	9.0	10.5	12.2
小臂长度 Small Arm Length	m	3.8	4.5	6.0
最大桩长 Max. Pile Length	m	12	15	18
总重量 Total Weight	kg	4200	5300	6500
配合挖机 Excavator	T	30-40	40-50	45-60

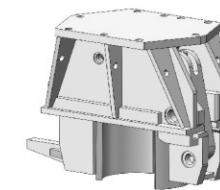


桩机附具 Attachment:

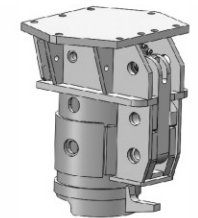
我们提供种类丰富的附具满足客户各种施工需要。
We provide a rich variety of attachments to meet various needs of construction.



水泥方桩夹具 Cement square pile clipping
夹持范围25-40cm Clipping range 25-40cm



水泥管桩夹具 Cement pipe clipping
夹持直径30cm Clipping diameter 30cm



管桩套筒夹具 Pipe jacket clippers
夹持直径30、40cm Lipping diameter 30、40cm

桩机配件 Spare parts:



振动马达 Piston Motor



旋转马达 Oscillating Motor



销轴 Pin shaft



夹紧牙齿 Clamping Teeth



橡胶减振块 Rubber Vibration Absorber



连杆 Connecting Rod