



# BATCH PUMP

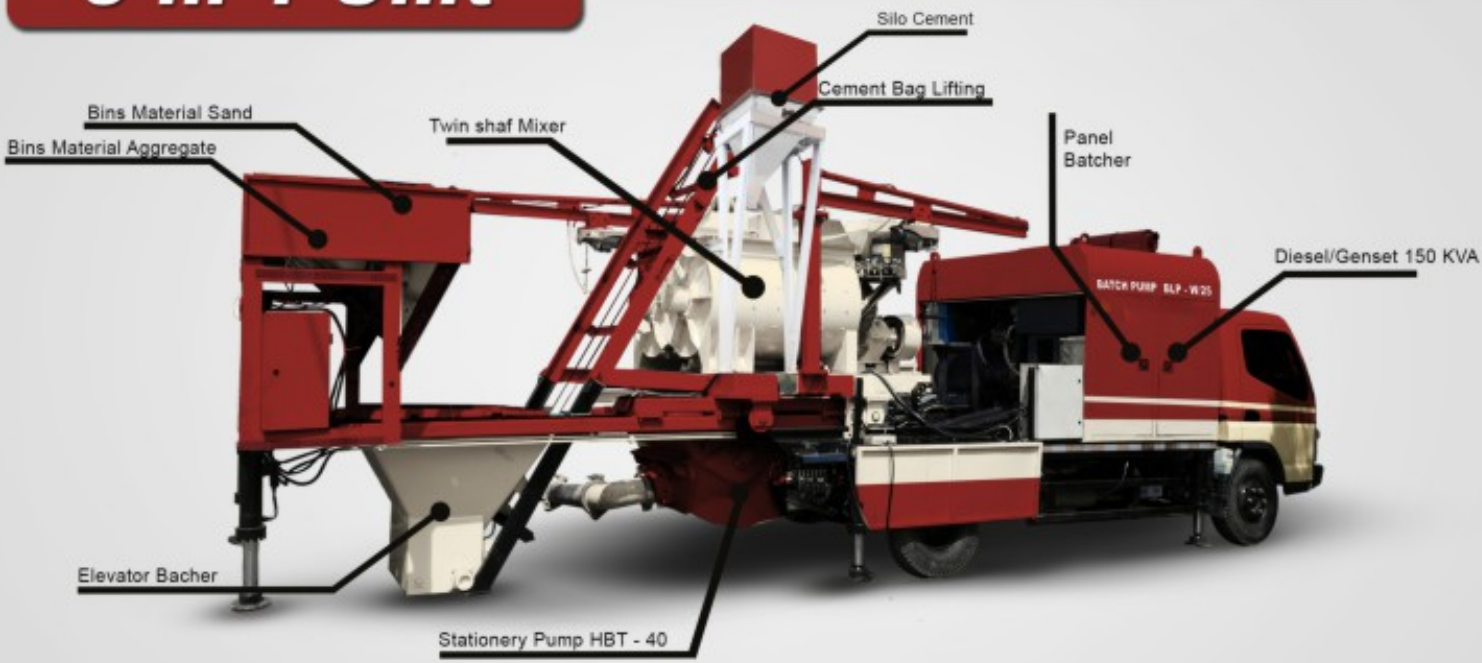
## BLP - W/25



**ADVANTAGES**

- ORIGINAL DESIGN
- EASY TO OPERATE
- EASY TO MAINTANCE
- MIX YOUR OWN CONCRETE DESIGN
- EFFICIENT & EFFECTIVE
- FRESH CONCRETE

### 3 in 1 Unit



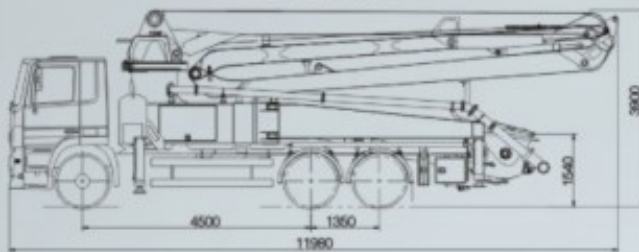
# Boom Pump Truck



**"SUPER LOONG BOOM 37 METER ON CHASSIS 6 x 4"**

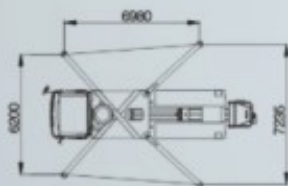
Chassis match: can match the chassis according to customer's requirement

**Dimensions**

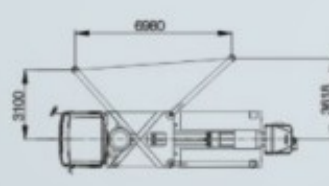


Dimensions varying according to truck assembly

**Full Support**



**Lateral Support**



**Boom Pump Truck**



# BP37RZ5

## Main Features

- Compact in design, 37m pump mounted on 3-axle truck. Efficient pump unit, ideal for long time use.
- Agile placing boom with 5 arms with unfolding height 8.9m only, which gives a wide work range.
- One side lateral support enables to work in narrow sites.
- Controller is designed for heavy duty use, with a monitor, it monitors the pump intelligently on working data management, real-time diagnostics, alarm logging, and service interval notice.
- Rich in configurations and high quality components.

## Standard Supply

- Remote control with 20m cable
- Pneumatic auto lubrication on mixing and pumping unit
- Controller with touch screen panel
- MBIT (Multi-Boom intelligent Technology) control
- One side lateral support system
- Optimized hopper with agitator
- Special alloy wearing plate and cutting ring
- Long-life delivery pipeline
- Rear light on hopper, horn on boom
- Outrigger support platesx4 with housing
- High pressure water pump
- Accessories for cleaning and pipes washing
- Blue and white color painting with wax protection
- Traffic permission kit
- Tool kit for daily maintenance
- Two Use & Maintenance Manuals
- Spare parts and service Manual

## Optional

- Automatic High/Low pressure switch
- Other configuration on demand

Distribution valve	S-valve	
Max. Concrete Output	m <sup>3</sup> /h	120/70
Max. Concrete Pressure	bar	70/110
Delivery Cylinder	mm	230
Stroke Length	mm	2100
Strokes	1/min	22/13
Hopper Capacity	L	550
Filling height	mm	1540
Hydraulic System	Open Loop	
Hydraulic oil cooling	Double fans	
High/Low Press. Switch	Manual	
Lubrication on pump	Automatic	
Lubrication on hopper	Automatic	

Boom Control Valve	Proportional	
Number of Arms		5
Folding System		RZ
Max. Reach Vertical	m	37
Max. Reach Horizontal	m	33
Max. Reach Depth	m	23.8
Min. Unfolding Height	m	8.9
End Hose Length	m	3
Pipeline	DN125/5.5	
Slewing Range	± 270°	
Slewing Motor	x 1	
Remote Control System	Radio	
Water Pump	20L/min, 60bar	
Tool kits with box	Standard	

Technical data and characteristic subject to modifications without notice



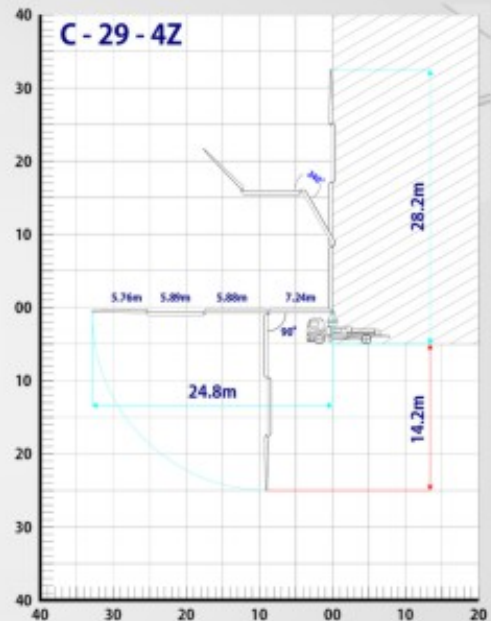
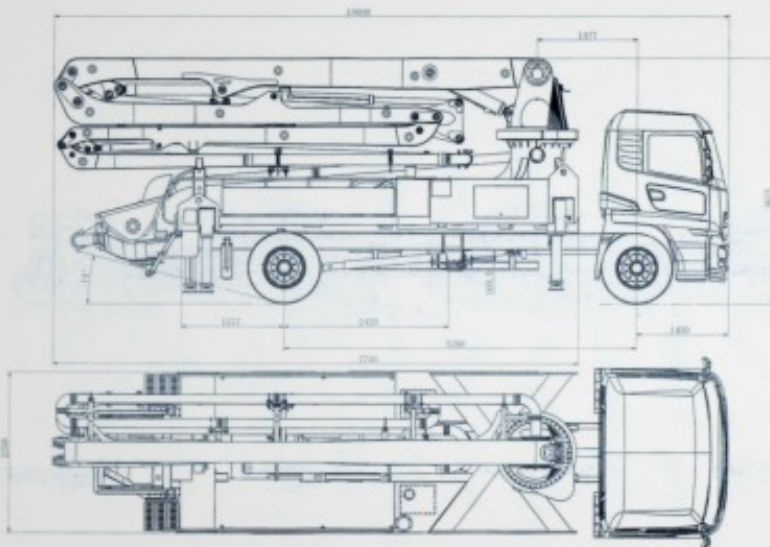
**盛川机械**  
Shengchuan Machinery

**BP29RZ4**



**“ Long Boom 29 Meter On Chassis 4x2 ”**

Chassis : Can Match The Chassis According To Customer's Requirement



**Boom Pump Truck**



# BP29RZ4

## Main Features

- Compact in design, 29m pump mounted on 2-axle truck.
- Agile placing boom with 4 arm
- Efficient pump unit, ideal for medium jobs
- Wide work range in narrow jobsite
- High quality components

## Standard Supply

- Remote control with cable
- Pneumatic auto lubrication on mixing and pumping unit
- Controller with touch screen panel
- Optimized hopper with agitator
- Special alloy wearing plate and cutting ring
- Long life delivery pipeline
- High pressure water pump



## Optional

- Other configuration on demand & color painting
- Can match the chassis according to customer's requirement

Distribution valve	S-valve	
Max. Concrete Output	m <sup>3</sup> /h	70/110/h
Delivery Cylinder	mm	200/230
Stroke Length	mm	1.600
Strokes	1/min	24/18
Hopper Capacity	L	550
Feeding Height	mm	1540
Hydraulic System	Open Loop	
Hydraulic oil cooling	Double fans	
Lubrication on pump	Automatic	
Lubrication on hopper	Automatic	
Chassis Model	HINO FG 265 JM	
Wheel Base	4750mm	
Total Weight	17T	

Boom Control Valve	Proportional	
Number of Arms		4
Folding System		RZ
Max. Reach Vertical	m	29
Max. Reach Horizontal	m	26
End Hose Length	m	3
Pipeline	DN125/5.5	
Slewing Range	± 270°	
Remote Control System	Radio	
Water Pump	20L/min, 60bar	



# BATCH PUMP

## BLP - W/25

### Pumping System

Pump Model	/	40.7.375	Main Motor	kw	37
Max. Theo. Pumping Output	m <sup>3</sup> /h	40	Main Pump Brand	/	Flutek Kawasaki K3V112
System Pressure	Mpa	28	Outlet Pressure	Mpa	7
Delivery Cylinder x Stroke	mm	∅200 x 1000	Main oil Cylinder/Rod x Stroke	mm	∅100/∅70 x 1000
Distribute Valve	/	S Valve	Diameter Of Outlet	mm	∅200
Oil Tank	L	300	Delivery Pipe	mm	∅125
Aggregate Size	mm	Pebble:40 Crushed Stone:30	Slumps	cm	Dec-23
Generator	kw	100			

### Mixing System

Mixer	/	JS500	Mix Motor	kw	18.5
Max. Theo. Mixing Output	m <sup>3</sup> /h		Hoist Motor	kw	5.5
Incharge Hopper x Filling Height	Lxmm	800 x 1200	Water Pump	kw	0.75
Discharge Hopper Capacity	L	500	Vibrator	kw	0.75 x 2
Flexible	/	Yes			

### Batching System

Hopper Capacity	m <sup>3</sup>	1.8	Compressor	bar	3
Hydraulic Outtrigger	pcs	2	Flexible	/	Yes

### Frame

LXW	mm	4000x2200	hydraulic Outtrigger	pcs	4
-----	----	-----------	----------------------	-----	---

### Chassis

Brand	/	Mitsubishi	Engine/Model	/	4D34-2A77
Chassis Model	/	HDL	Tyre	pcs	6
Driving Speed	km/h	∅80	Tyre Size	/	8.25R16
Wheel Base	mm	3.850	Size (W/O Chassis)	mm	7000 x 2210 x 2580
Mass	kg	8000	Size (Driving with Batcher)	mm	8400 x 2210 x 2580
Size (Working with Batcher)	mm	10200 x 2210 x 2580			

### THREE IN ONE UNIT



Shanghai Shengchuan Hydraulic Machinery Ltd. Inc.

Add: R206, Tower 1, No. 4491, Longwu Road, Minhang District, Shanghai, China

Post Code: 200241

Tel/Fax: 021-34677891

Mob: 18684790901

E-mail: gm@chinashengchuan.com

Http: www.chinashengchuan.com

## Boom Pump Truck



AIR OR MUD

Truck Mounted Water Drilling Rig, QYZJ-350, deep water well drilling rig is our independent research and development products which coupled to higher air power, and thus play a significant role in leading to faster drilling rates. Adopting newest model & advanced hydro technology, low consumption, large rotary torque, convenient hole deflection, our water well drilling machine are mainly used for well drilling in resource exploration and hydrology wells, civil use water well, agriculture irrigation etc projects.

### Advantage and Features

#### 1, Easy and flexible full hydraulic control

The water drilling rig's speed, torque, thrust axial pressure, reverse axial pressure, thrust speed, and lifting speed can be adjusted at any time to meet the requirements of different drilling tool working conditions and different construction processes.

#### 2, Top-drive slewing propulsion lift

This bore well rig is easy to connect and disconnect the drill pipe, shorten the auxiliary time, and also facilitate drilling with the pipe.

#### 3, Multifunctional drilling process

This drilling rig adopt air drilling and mud pump circulation drilling process .it is optional items to install mud pumps, foam pumps and generators in to the drilling machine chassis

#### 4, High efficiency

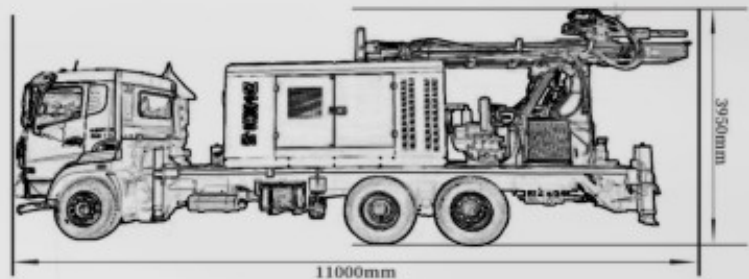
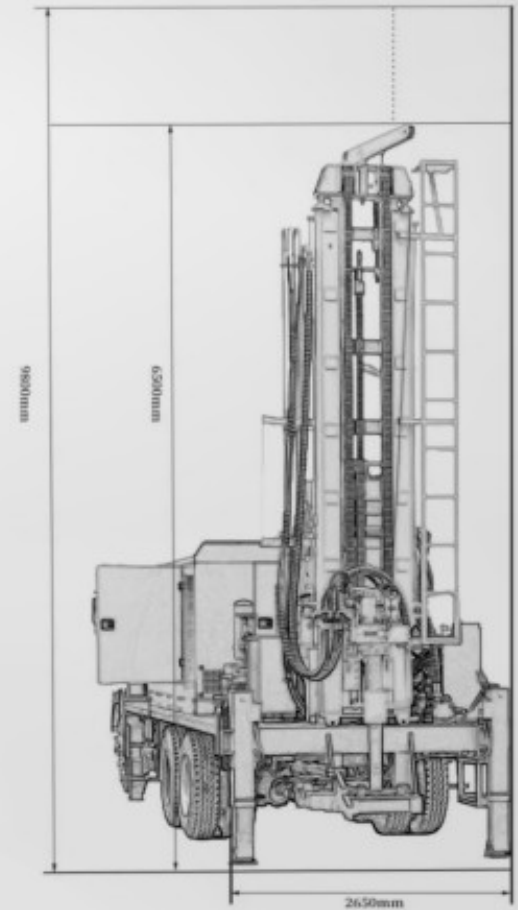
Due to the full hydraulic and top-drive slewing propulsion lifting, it is suitable for various drilling processes and various drilling tools, with convenient and flexible control, fast drilling speed and short auxiliary time, so the operation efficiency is high.

## Truck Mounted Water Drilling Rig



**TECHNICAL PARAMETERS**

<b>Model</b>		<b>QYZJ-350</b>
<b>Chassis</b>	Chassis Brand	Sinotruck
	VIN	LJVA8TDLINTX04793
	Chassis Engine No.	A5BW1L30029
	Chassis Engine Power	213KW
	Tyre	6X4
	Max. Drive Speed	120 KM/H
<b>Compressor</b>	Compressor Engine Power	295KW
	Air Pressure	0.8-3.5 Mpa
	Air Consumption	13-40 m <sup>3</sup> /min
<b>Mud Pump</b>	Mud pump	BW450
	Mud Pump Engine Power	30 KW
<b>Rig</b>	Drilling Depth	400 Meters
	Drilling Diameter Range	105-350MM
	Feed stroke	6600MM
	Drill pipe diameter	102/104mm
	Drill pipe length	3.0 m
	Lifting force	25 T
	Rotary speed	50-200RPM
	Rotation torque	11000N.m
<b>Total Weight</b>		<b>18000KGS</b>
<b>Dimension</b>		<b>11000*2650*3900mm</b>



**Truck Mounted Water Drilling Rig**

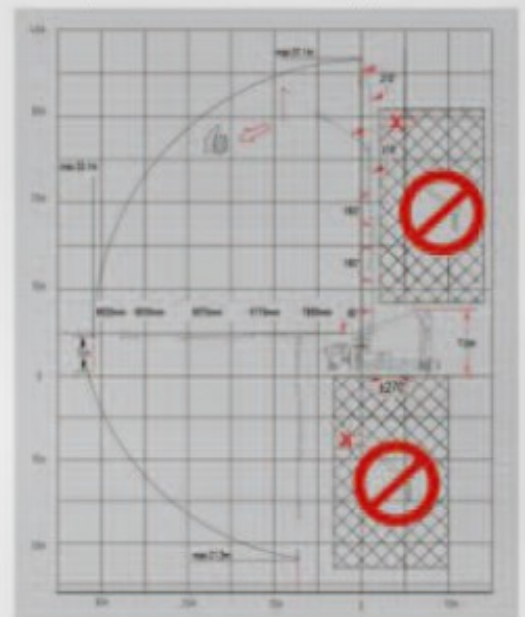
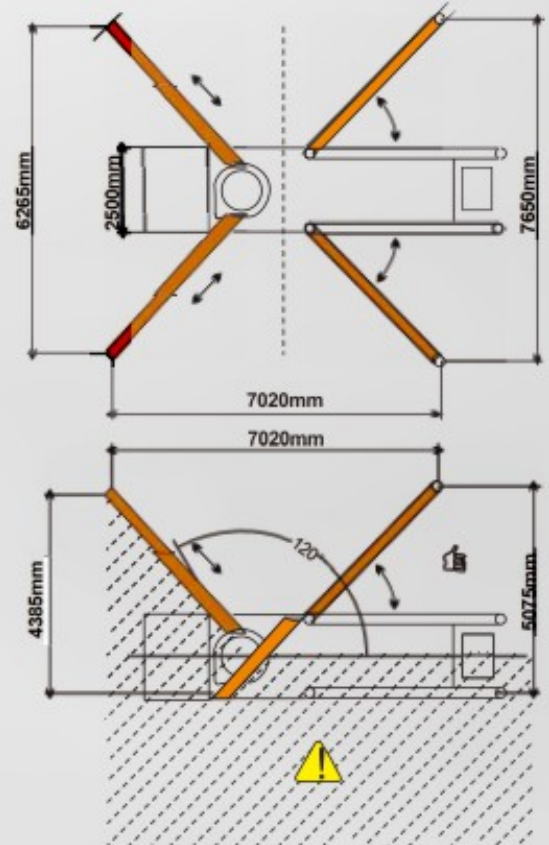
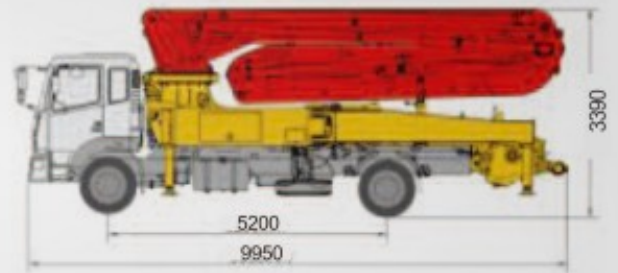




# 技术参数 TECHNICAL PARAMETER

型号 ( Model )		BP38RZ5	
整车参数 ( Vehicle )	全长 ( Full length )	9980mm	
	总宽 ( Total width )	2500mm	
	总高 ( Total height )	3990mm	
	自重 ( Self weight )	23000kg	
臂架支腿参数 ( Boom & Outrigger )	臂架垂直高度 ( Boom vertical height )	37.1m	
	臂架水平长度 ( Boom horizontal length )	33.1m	
	臂架垂直深度 ( Boom vertical depth )	21.3m	
	最小展开高度 ( Minimum expansion height )	7.8m	
	第一节臂 ( First arm )	长度 ( Length )	7800mm
		转角 ( Corner )	90°
	第二节臂 ( Second arm )	长度 ( Length )	6175mm
		转角 ( Corner )	180°
	第三节臂 ( Third arm )	长度 ( Length )	5875mm
		转角 ( Corner )	180°
	第四节臂 ( Fourth arm )	长度 ( Length )	6630mm
		转角 ( Corner )	216°
	第五节臂 ( Fifth arm )	长度 ( Length )	6620mm
		转角 ( Corner )	210°
第六节臂 ( Sixth arm )	长度 ( Length )	无	
	转角 ( Corner )	无	
转台旋转角度 ( Slewing Table angle )		±270°	
前支腿展开宽度 ( Front leg deployment width )		6265mm	
后支腿展开宽度 ( Rear leg deployment width )		7650mm	
泵送系统参数 ( Pumping system )	混凝土排量 ( Concrete Output )	100/60m <sup>3</sup> /h	
	理论泵送压力 ( Pressure ) High/Low	13/8.3Mpa	
	理论泵送次数 ( Theoretical pumping times )	26Time/Minute	
	输送缸内径 ( Delivery cylinder inner diameter )	260mm	
	输送缸行程 ( Delivery cylinder stroke )	1400mm	
	液压系统 ( Hydraulic system )	Open开式	
	系统油压 ( System oil pressure )	32Mpa	
	油箱体积 ( Tank volume )	380L	
	水箱容积 ( Water tank volume )	400L	
	输送管径 ( Conveying pipe diameter )	125mm	
	末端软管长度 ( End hose length )	3m	
末端软管管径 ( End hose diameter )	125mm		
底盘参数 ( Chassis )	底盘型号 ( Chassis model )	Steyr 斯太尔2桥 ZZ5231N521GE1	
	发动机型号 ( engine model )	MC07.31-50	
	发动机功率 ( Engine power )	225KW	
	排放标准 ( Emission Standards )	国VI	
	排量 ( Displacement )	6.870L	

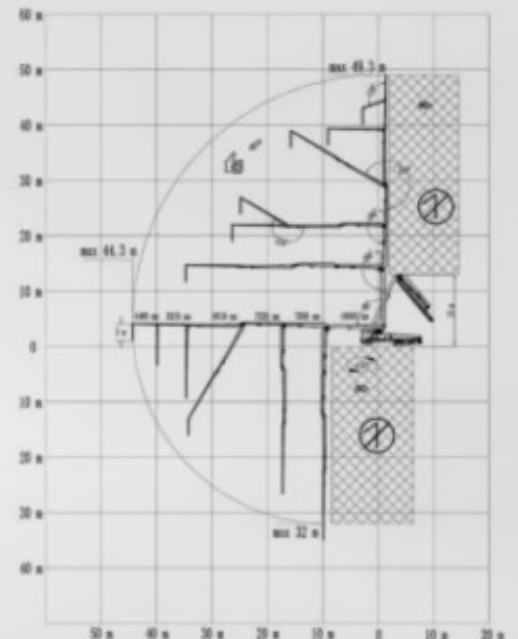
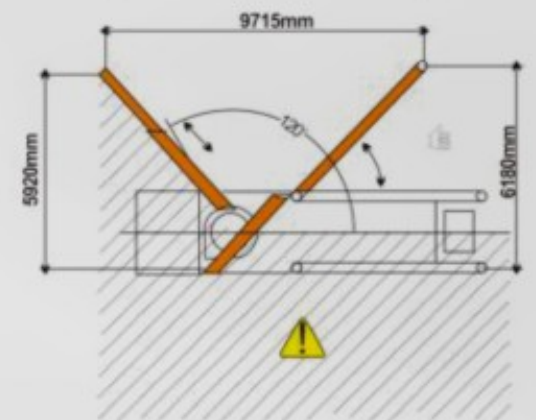
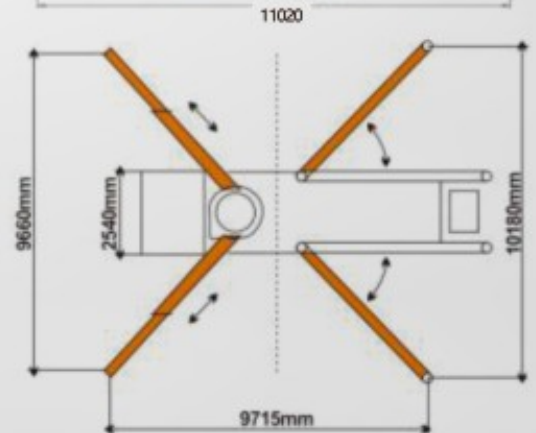
# BP38RZ5





## 技术参数 TECHNICAL PARAMETER

型号 (Model)		BP50RZ6	
整车参数 (Vehicle)	全长 (Full length)	12110mm	
	总宽 (Total width)	2540mm	
	总高 (Total height)	4000mm	
	自重 (Self weight)	35000kg	
臂架支腿参数 (Boom & Outrigger)	臂架垂直高度 (Boom vertical height)	49.3m	
	臂架水平长度 (Boom horizontal length)	44.3m	
	臂架垂直深度 (Boom vertical depth)	32m	
	最小展开高度 (Minimum expansion height)	13m	
	第一节臂 (First arm)	长度 (Length)	10065mm
		转角 (Corner)	90°
	第二节臂 (Second arm)	长度 (Length)	7850mm
		转角 (Corner)	180°
	第三节臂 (Third arm)	长度 (Length)	7550mm
		转角 (Corner)	180°
	第四节臂 (Fourth arm)	长度 (Length)	9810mm
		转角 (Corner)	240°
	第五节臂 (Fifth arm)	长度 (Length)	5570mm
		转角 (Corner)	220°
第六节臂 (Sixth arm)	长度 (Length)	4460mm	
	转角 (Corner)	110°	
转台旋转角度 (Slewing Table angle)		±270°	
前支腿展开宽度 (Front leg deployment width)		9660mm	
后支腿展开宽度 (Rear leg deployment width)		10180mm	
泵送系统参数 (Pumping system)	混凝土排量 (Concrete Output)	150m <sup>3</sup> /h	
	理论泵送压力 (Pressure) High/Low	12/8.2Mpa	
	理论泵送次数 (Theoretical pumping times)	33Time/Minute	
	输送缸内径 (Delivery cylinder inner diameter)	260mm	
	输送缸行程 (Delivery cylinder stroke)	1900mm	
	液压系统 (Hydraulic system)	Open开式	
	系统油压 (System oil pressure)	32Mpa	
	油箱体积 (Tank volume)	500L	
	水箱容积 (Water tank volume)	400L	
	输送管径 (Conveying pipe diameter)	125mm	
	末端软管长度 (End hose length)	3m	
	末端软管管径 (End hose diameter)	125mm	
底盘参数 (Chassis)	底盘型号 (Chassis model)	Isuzu三桥五十铃 QL5350TZZW6TDZY	
	发动机型号 (engine model)	6WG1-TCG60	
	发动机功率 (Engine power)	309KW	
	排放标准 (Emission Standards)	国VI	
	排量 (Displacement)	15.68L	

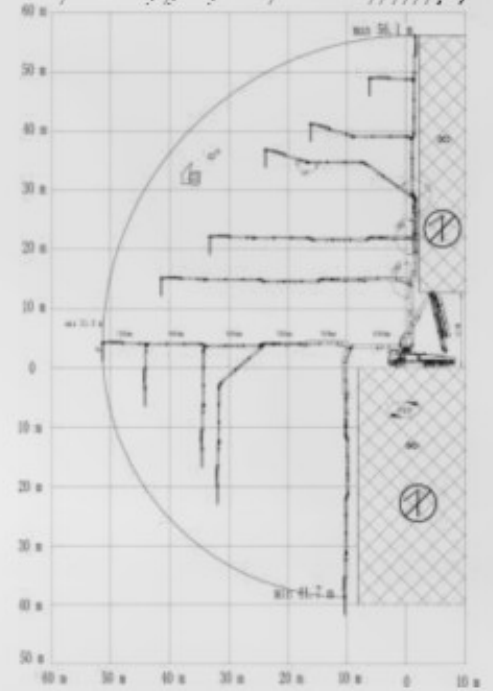
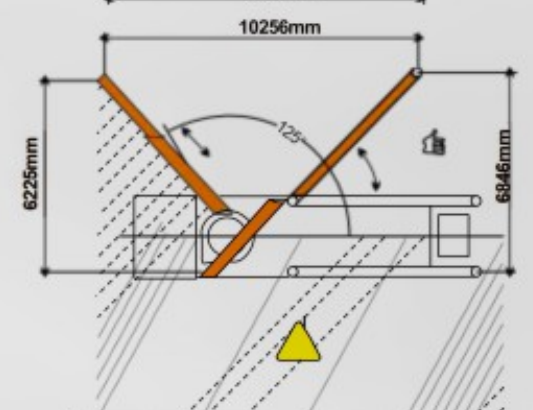
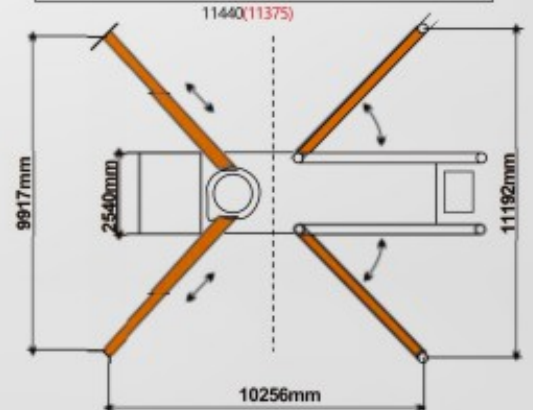
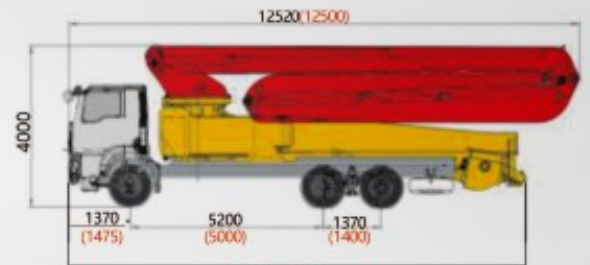




# 技术参数 TECHNICAL PARAMETER

型号 ( Model )		BP57RZ6	
整车参数 ( Vehicle )	全长 ( Full length )	12520mm	
	总宽 ( Total width )	2550mm	
	总高 ( Total height )	4000mm	
	自重 ( Self weight )	35000kg	
臂架支腿参数 ( Boom & Outrigger )	臂架垂直高度 ( Boom vertical height )	56.1m	
	臂架水平长度 ( Boom horizontal length )	51.3m	
	臂架垂直深度 ( Boom vertical depth )	41.7m	
	最小展开高度 ( Minimum expansion height )	12.8m	
	第一节臂 ( First arm )	长度 ( Length )	10404mm
		转角 ( Corner )	90°
	第二节臂 ( Second arm )	长度 ( Length )	7639mm
		转角 ( Corner )	180°
	第三节臂 ( Third arm )	长度 ( Length )	7209mm
		转角 ( Corner )	180°
	第四节臂 ( Fourth arm )	长度 ( Length )	9694mm
		转角 ( Corner )	234°
	第五节臂 ( Fifth arm )	长度 ( Length )	9949mm
		转角 ( Corner )	180°
第六节臂 ( Sixth arm )	长度 ( Length )	7450mm	
	转角 ( Corner )	195°	
转台旋转角度 ( Slewng Table angle )	±270°		
前支腿展开宽度 ( Front leg deployment width )	9917mm		
后支腿展开宽度 ( Rear leg deployment width )	11192mm		
泵送系统参数 ( Pumping system )	混凝土排量 ( Concrete Output )	150m <sup>3</sup> /h	
	理论泵送压力 ( Pressure ) High/Low	12/8.2Mpa	
	理论泵送次数 ( Theoretical pumping times )	32Time/Minute	
	输送缸内径 ( Delivery cylinder inner diameter )	260mm	
	输送缸行程 ( Delivery cylinder stroke )	1900mm	
	液压系统 ( Hydraulic system )	Open开式	
	系统油压 ( System oil pressure )	32Mpa	
	油箱体积 ( Tank volume )	500L	
	水箱容积 ( Water tank volume )	400L	
	输送管径 ( Conveying pipe diameter )	125mm	
	末端软管长度 ( End hose length )	3m	
末端软管管径 ( End hose diameter )	125mm		
底盘参数 ( Chassis )	底盘型号 ( Chassis model )	Isuzu QL5350TZZW6TDZY Sitrak ZZ5386V524MF1	
	发动机型号 ( engine model )	6WG1-TCG61 MC11.40-60	
	发动机功率 ( Engine power )	338/327KW	
	排放标准 ( Emission Standards )	国VI	
	排量 ( Displacement )	15.68/9.5/10.518L	

# BP57RZ6

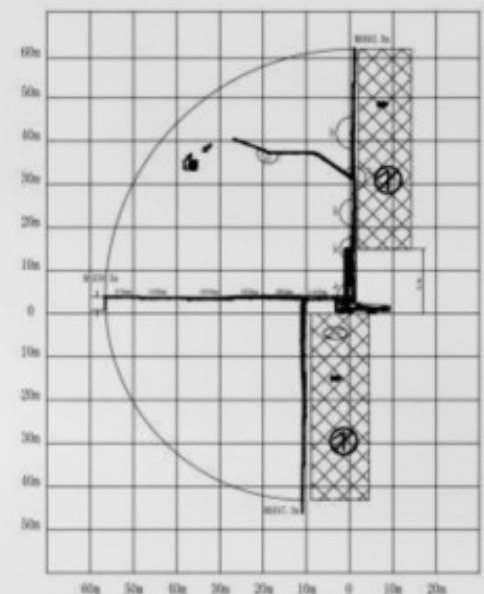
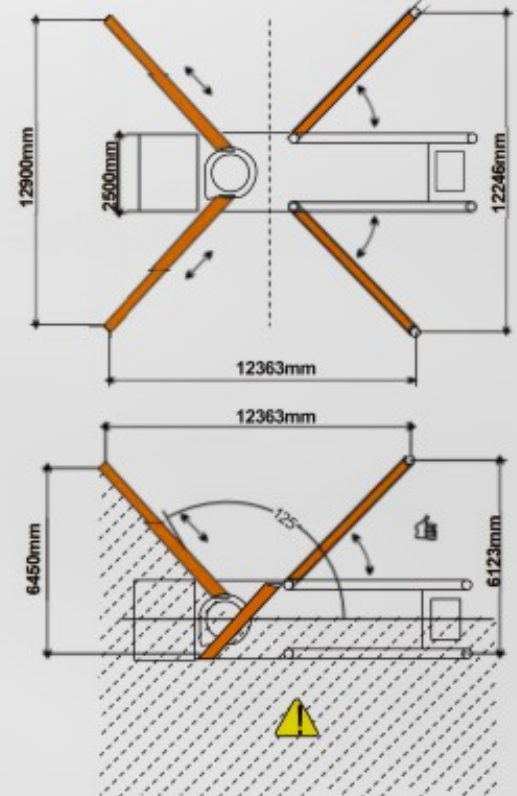




# BP75RZ7

## 技术参数 TECHNICAL PARAMETER

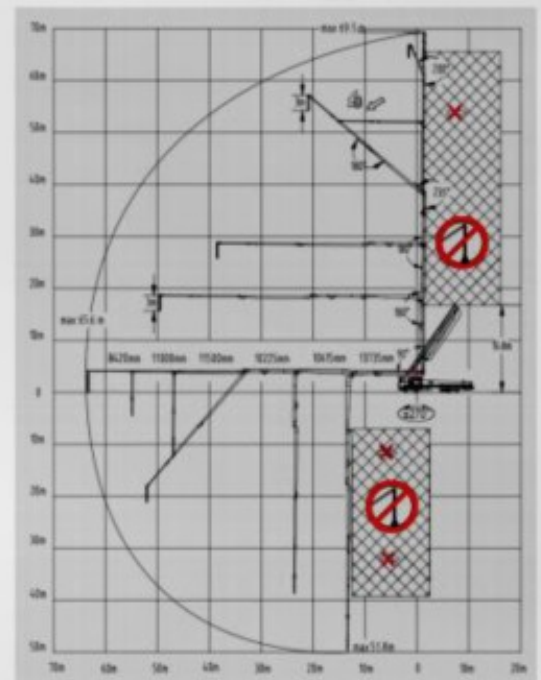
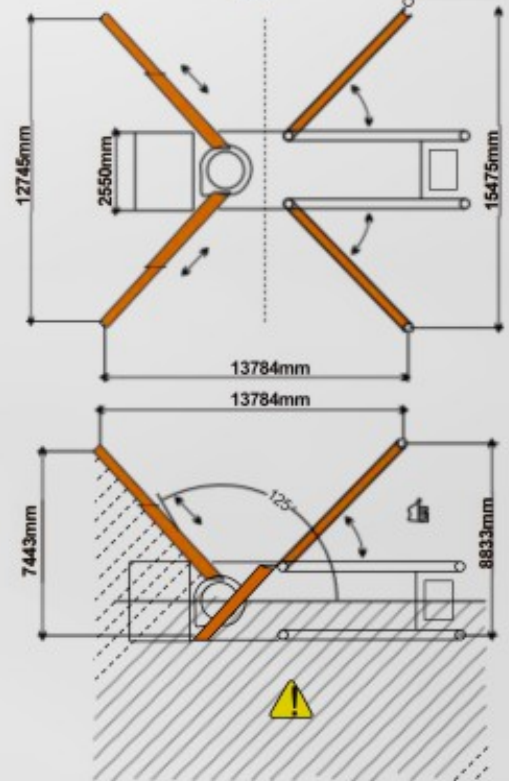
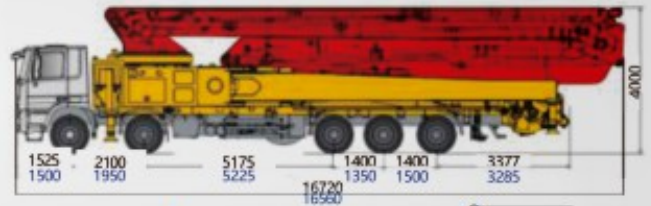
型号 ( Model )		BP75RZ7	
整车参数 ( Vehicle )	全长 ( Full length )	13880mm	
	总宽 ( Total width )	2500mm	
	总高 ( Total height )	4000mm	
	自重 ( Self weight )	44000kg	
臂架支腿参数 ( Boom & Outrigger )	臂架垂直高度 ( Boom vertical height )	62.5m	
	臂架水平长度 ( Boom horizontal length )	58.5m	
	臂架垂直深度 ( Boom vertical depth )	47.3m	
	最小展开高度 ( Minimum expansion height )	14.9m	
	第一节臂 ( First arm )	长度 ( Length )	11430mm
		转角 ( Corner )	90°
	第二节臂 ( Second arm )	长度 ( Length )	8600mm
		转角 ( Corner )	180°
	第三节臂 ( Third arm )	长度 ( Length )	8250mm
		转角 ( Corner )	180°
	第四节臂 ( Fourth arm )	长度 ( Length )	10550mm
		转角 ( Corner )	235°
	第五节臂 ( Fifth arm )	长度 ( Length )	11050mm
		转角 ( Corner )	180°
第六节臂 ( Sixth arm )	长度 ( Length )	8720mm	
	转角 ( Corner )	200°	
转台旋转角度 ( Slewling Table angle )	±270°		
前支腿展开宽度 ( Front leg deployment width )	12900mm		
后支腿展开宽度 ( Rear leg deployment width )	12246mm		
泵送系统参数 ( Pumping system )	混凝土排量 ( Concrete Output )	150m <sup>3</sup> /h	
	理论泵送压力 ( Pressure ) High/Low	12/8.2Mpa	
	理论泵送次数 ( Theoretical pumping times )	28Time/Minute	
	输送缸内径 ( Delivery cylinder inner diameter )	260mm	
	输送缸行程 ( Delivery cylinder stroke )	2200mm	
	液压系统 ( Hydraulic system )	Open开式	
	系统油压 ( System oil pressure )	32Mpa	
	油箱体积 ( Tank volume )	500L	
	水箱容积 ( Water tank volume )	400L	
	输送管径 ( Conveying pipe diameter )	125mm	
	末端软管长度 ( End hose length )	3m	
末端软管管径 ( End hose diameter )	125mm		
底盘参数 ( Chassis )	底盘型号 ( Chassis model )	Isuzu QL5440TZZW7VDHY Sitrak ZZ5446V516MF1	
	发动机型号 ( engine model )	6WG1-TCG61 MC11.44-60	
	发动机功率 ( Engine power )	338/327KW	
	排放标准 ( Emission Standards )	国VI/国VI	
	排量 ( Displacement )	15.68/11.8/10.518L	





## 技术参数 TECHNICAL PARAMETER

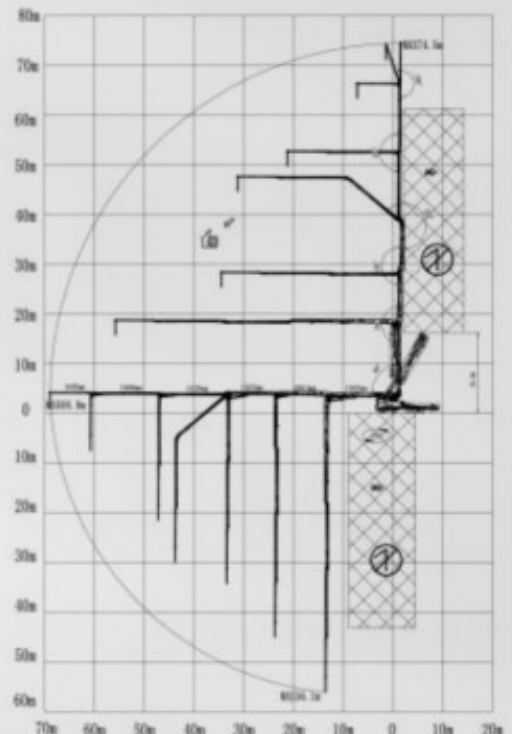
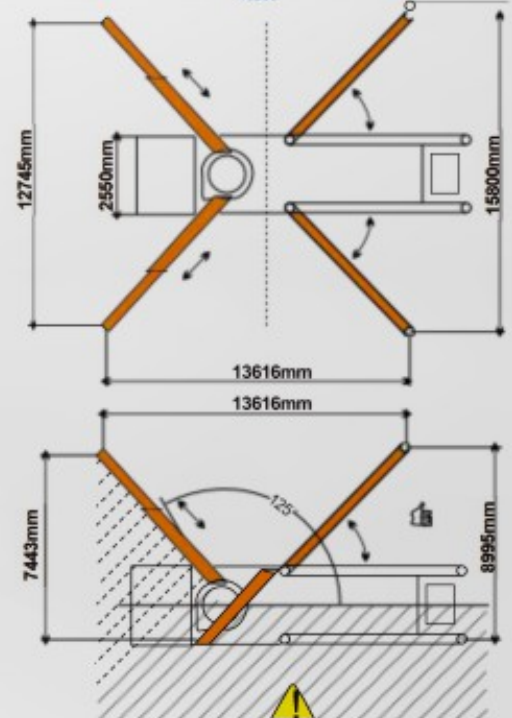
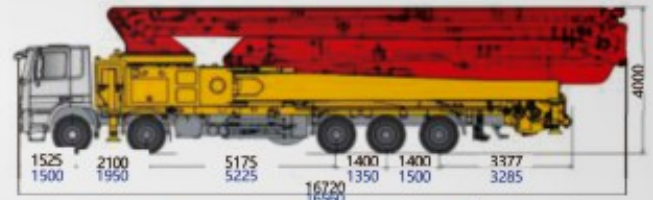
型号 (Model)		BP70RZ6	
整车参数 (Vehicle)	全长 (Full length)	16720mm	
	总宽 (Total width)	2550mm	
	总高 (Total height)	4000mm	
	自重 (Self weight)	54000kg	
臂架支腿参数 (Boom & Outrigger)	臂架垂直高度 (Boom vertical height)	69.5m	
	臂架水平长度 (Boom horizontal length)	65.6m	
	臂架垂直深度 (Boom vertical depth)	51.8m	
	最小展开高度 (Minimum expansion height)	16.8m	
	第一节臂 (First arm)	长度 (Length)	13735mm
		转角 (Corner)	90°
	第二节臂 (Second arm)	长度 (Length)	10615mm
		转角 (Corner)	180°
	第三节臂 (Third arm)	长度 (Length)	10225mm
		转角 (Corner)	180°
	第四节臂 (Fourth arm)	长度 (Length)	11500mm
		转角 (Corner)	235°
	第五节臂 (Fifth arm)	长度 (Length)	11000mm
转角 (Corner)		180°	
第六节臂 (Sixth arm)	长度 (Length)	8420mm	
	转角 (Corner)	200°	
转台旋转角度 (Slewing Table angle)	±270°		
前支腿展开宽度 (Front leg deployment width)	12745mm		
后支腿展开宽度 (Rear leg deployment width)	15475mm		
泵送系统参数 (Pumping system)	混凝土排量 (Concrete Output)	180m <sup>3</sup> /h	
	理论泵送压力 (Pressure) High/Low	12/8.2Mpa	
	理论泵送次数 (Theoretical pumping times)	28Time/Minute	
	输送缸内径 (Delivery cylinder inner diameter)	260mm	
	输送缸行程 (Delivery cylinder stroke)	2200mm	
	液压系统 (Hydraulic system)	Open开式	
	系统油压 (System oil pressure)	32Mpa	
	油箱体积 (Tank volume)	600L	
	水箱容积 (Water tank volume)	400L	
	输送管径 (Conveying pipe diameter)	125mm	
	末端软管长度 (End hose length)	3m	
	末端软管管径 (End hose diameter)	125mm	
底盘参数 (Chassis)	底盘型号 (Chassis model)	五桥陕汽Shacman SX5449XDCZ2 五桥豪沃Howo	
	发动机型号 (engine model)	ZZ5547V42KGF1 WP13.510E62	
	发动机功率 (Engine power)	375/400KW	
	排放标准 (Emission Standards)	国VI	
	排量 (Displacement)	12.5/12.419L	





# 技术参数 TECHNICAL PARAMETER

型号 ( Model )		BP75RZ7	
( Vehicle ) 整车参数	全长 ( Full length )	16720mm	
	总宽 ( Total width )	2550mm	
	总高 ( Total height )	4000mm	
	自重 ( Self weight )	54000kg	
( Boom & Outrigger ) 臂架支腿参数	臂架垂直高度 ( Boom vertical height )	74.5m	
	臂架水平长度 ( Boom horizontal length )	68.9m	
	臂架垂直深度 ( Boom vertical depth )	56.1m	
	最小展开高度 ( Minimum expansion height )	16.8m	
	第一节臂 ( First arm )	长度 ( Length )	13935mm
		转角 ( Corner )	90°
	第二节臂 ( Second arm )	长度 ( Length )	10615mm
		转角 ( Corner )	180°
	第三节臂 ( Third arm )	长度 ( Length )	10225mm
		转角 ( Corner )	180°
	第四节臂 ( Fourth arm )	长度 ( Length )	13250mm
		转角 ( Corner )	230°
	第五节臂 ( Fifth arm )	长度 ( Length )	13800mm
		转角 ( Corner )	180°
第六节臂 ( Sixth arm )	长度 ( Length )	8620mm	
	转角 ( Corner )	200°	
转台旋转角度 ( Slewing Table angle )		±270°	
前支腿展开宽度 ( Front leg deployment width )		12745mm	
后支腿展开宽度 ( Rear leg deployment width )		15800mm	
( Pumping system ) 泵送系统参数	混凝土排量 ( Concrete Output )	180m <sup>3</sup> /h	
	理论泵送压力 ( Pressure ) High/Low	12/8.2Mpa	
	理论泵送次数 ( Theoretical pumping times )	28Time/Minute	
	输送缸内径 ( Delivery cylinder inner diameter )	260mm	
	输送缸行程 ( Delivery cylinder stroke )	2200mm	
	液压系统 ( Hydraulic system )	Open开式	
	系统油压 ( System oil pressure )	32Mpa	
	油箱体积 ( Tank volume )	600L	
	水箱容积 ( Water tank volume )	400L	
	输送管径 ( Conveying pipe diameter )	125mm	
	末端软管长度 ( End hose length )	3m	
	末端软管管径 ( End hose diameter )	125mm	
( Chassis ) 底盘参数	底盘型号 ( Chassis model )	五桥陕汽Shacman SX5449XDCZ2 五桥豪沃Howo	
	发动机型号 ( engine model )	ZZ5547V42KGF1 WP13.510E62 MC13.54-61	
	发动机功率 ( Engine power )	375/400KW	
	排放标准 ( Emission Standards )	国VI	
	排量 ( Displacement )	12.5/12.419L	





## 技术参数 TECHNICAL PARAMETER

型号 (Model)		BP80RZ7	
整车参数 (Vehicle)	全长 (Full length)	17505mm	
	总宽 (Total width)	2550mm	
	总高 (Total height)	4000mm	
	自重 (Self weight)	55000kg	
臂架支腿参数 (Boom & Outrigger)	臂架垂直高度 (Boom vertical height)	79.1m	
	臂架水平长度 (Boom horizontal length)	73.6m	
	臂架垂直深度 (Boom vertical depth)	61.6m	
	最小展开高度 (Minimum expansion height)	17.8m	
	第一节臂 (First arm)	长度 (Length)	13935mm
		转角 (Corner)	89°
	第二节臂 (Second arm)	长度 (Length)	10615mm
		转角 (Corner)	180°
	第三节臂 (Third arm)	长度 (Length)	10225mm
		转角 (Corner)	180°
	第四节臂 (Fourth arm)	长度 (Length)	13750mm
		转角 (Corner)	230°
	第五节臂 (Fifth arm)	长度 (Length)	14800mm
		转角 (Corner)	180°
第六节臂 (Sixth arm)	长度 (Length)	6358mm	
	转角 (Corner)	180°	
第七节臂 (Seventh)	长度 (Length)	54100mm	
	转角 (Corner)	200°	
转台旋转角度 (Slewing Table angle)		±270°	
泵送系统参数 (Pumping system)	前支腿展开宽度 (Front leg deployment width)	15683mm	
	后支腿展开宽度 (Rear leg deployment width)	16523mm	
	混凝土排量 (Concrete Output)	180m <sup>3</sup> /h	
	理论泵送压力 (Pressure) High/Low	12/8.2Mpa	
	理论泵送次数 (Theoretical pumping times)	28Time/M	
	输送缸内径 (Delivery cylinder inner diameter)	260mm	
	输送缸行程 (Delivery cylinder stroke)	2200mm	
	液压系统 (Hydraulic system)	Open开式	
	系统油压 (System oil pressure)	32Mpa	
	油箱体积 (Tank volume)	600L	
	水箱容积 (Water tank volume)	400L	
	输送管径 (Conveying pipe diameter)	125mm	
	底盘参数 (Chassis)	末端软管长度 (End hose length)	3m
末端软管管径 (End hose diameter)		125mm	
发动机型号 (engine model)		SITRAK重汽汕德卡	
底盘型号 (Chassis model)		MAN	
发动机功率 (Engine power)		397KW	
排放标准 (Emission Standards)		国VI	
排量 (Displacement)	12.419L		

