



WE ARE ONE OF
LEADING EXPORTERS
FOR INDUSTRY PARTS

www.befa.com.cn

ABOUT US

We are one of leading exporters/manufactures in auto lathe parts, turning parts, milling parts, stamping parts, pressing parts, casting & forging parts from 1992.

All of our parts were produced according to customer's drawings. Such as hydraulic cylinder accessories, heating element. We used steel, stainless steel, aluminum, brass, copper etc. And all goods exported to Europe and North America.

We have more than 30 sets machine centers and 120 sets CNC lathes and 50 sets auto lathe machines to produce many turning and milling parts.

We also have over 100 sets punches from 0.5MT to 500MT, 10 sets hydraulic presses from 55MT to 315MT and some welding and drilling machines. We can produce large quantity of stamping parts. We also produce big quantity of casting & forging parts.

We have a team formed by senior engineers to develop the craft and control the quality from receiving the drawings to final shipment. The predominance is we have good senior engineers. Thus we have better craft than other companies or customer's. And then ensure quality and save money. We control quality from material. We test chemical component before cutting material.

We have experience to ensure good service, reasonable price, good quality and delivery on time. We hope we have chance to produce parts for you.

AUTO LATHE PARTS TURNING PARTS MACHINING PARTS SHAFT
AMMETER PARTS MILLING PARTS STAMPING PARTS
PIPE FITTING HYDRAULIC PARTS HEAT ELEMENT METAL-FORMING PARTS
PALLET & PARTS CASTING & FORGING PARTS PRESSING PARTS





Production equipment



Testing equipment



HEAT ELEMENT



HEAT ELEMENT



HEAT ELEMENT



HEAT ELEMENT



PIPE FITTING



HYDRAULIC PARTS



HYDRAULIC PARTS



HYDRAULIC PARTS



HYDRAULIC PARTS



AUTO LATHE PARTS



AMMETER PARTS



TURNING PARTS & MACHINING PARTS



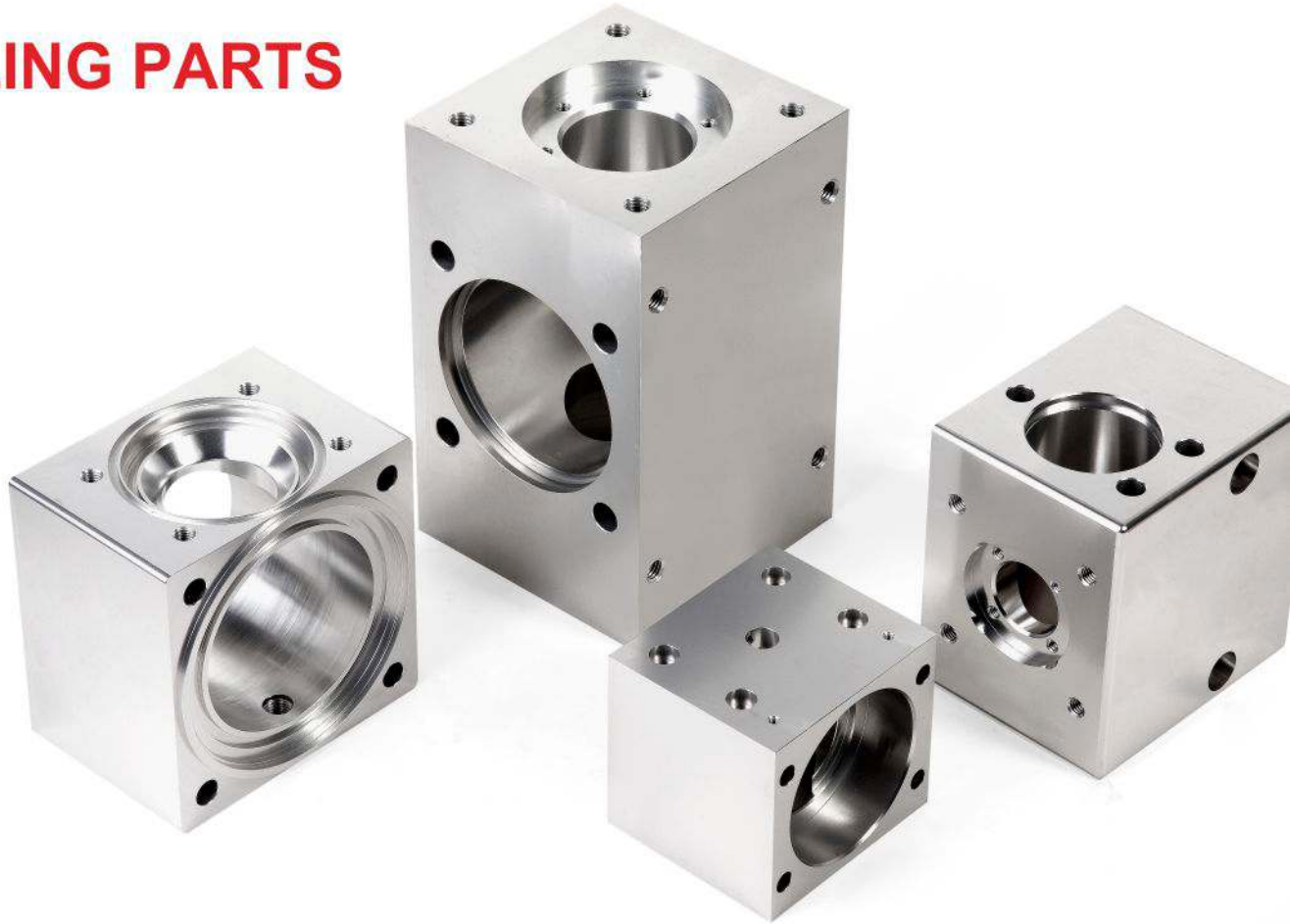
TURNING PARTS & MACHINING PARTS



SHAFT



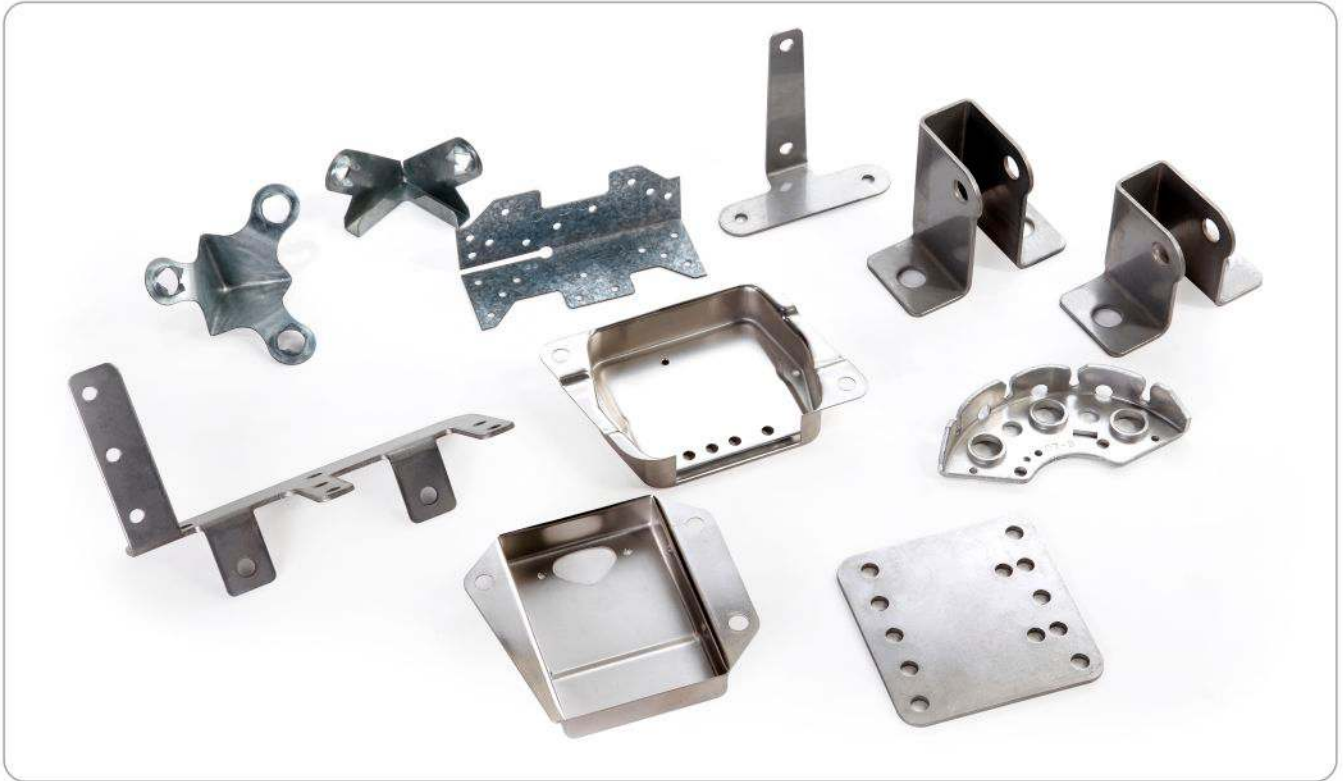
MILLING PARTS



VALVES & MILLING PARTS



STAMPING PARTS



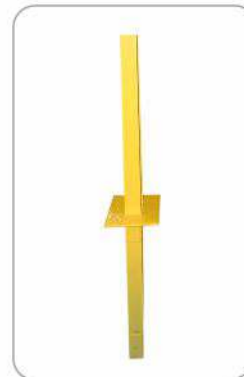
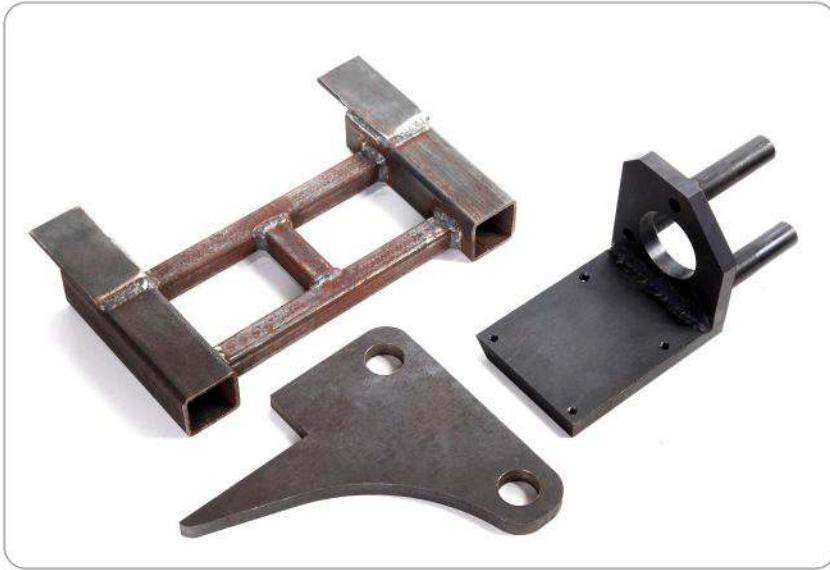
PRESSING PARTS



PALLET & PARTS



METAL-FORMING PARTS



CASTING & FORGING PARTS





Hangzhou Befa Machinery Co.,Ltd

6F-17,UN Gongshe,135 Liuhe Road,

310023 Hangzhou,China

Tel :0086-571-8605 0580

Fax:0086-571-8605 0590

E-mail:info@befa.com.cn

www.befa.com.cn