



双半径设计， 更易挖掘，更少磨损

Less Wear Rate, Easier Excavation

XUZHOU YF BUCKET MACHINERY CO.,LTD.



- Business introduction
- Product catalog: Rock bucket, Skeleton bucket, Standard bucket, Clean bucket, Ripper, Grab bucket, H link, Quick coupler
- Please contact us

ABOUT US 公司简介

徐州远丰工程机械有限公司于2002年成立，是一家专业致力于产品研发、设计、生产制造挖掘机铲斗等工作装置的企业。远丰公司产品通用中国、欧美、日本、韩国等国际品牌的挖掘机OEM配套。产品出口欧美、东南亚、中东各国。

公司针对挖掘机售后市场积累了丰富的经验并拥有完整质量保证体系。产品研发设计应对各类矿山工程环境的铲斗、工作装置，可满足市场不同机型的配套需求。

远丰公司正积极开发国际市场，致力于以世界级质量标准服务客户。质量诚信与创新永远是远丰公司的宗旨。

Yuan Feng was established in Xuzhou Jiangsu Province, China in 2002. It specializes in development, design and manufacture of excavator buckets and related accessories. Yuan Feng's products could support most international excavator manufacturers in China, Europe and America, Japan, Korea and so forth. The products have been exported to countries in Europe and America, Southeast Asia, and the Middle East.

We have gained great experience on excavator aftermarket for more than ten years and have established a robust quality assurance system. Buckets and related accessories from Yuan Feng fit many models of excavators, which could be used for different types of mining projects.

We are exploring the international market and continuously devoting to provide world-class services. Honesty, credibility and creativity are always the tenet we stick to.



PRODUCTS 产品介绍

远丰公司自主设计生产的铲斗拥有更高的工艺，更易挖掘，更少磨损。采用高强度耐磨钢材，选用世界知名品牌斗齿及齿座。

产品分为沙土轻作业环境的土方型挖斗；矿山恶劣环境的重载岩石型挖斗、松土器，以及垃圾处理、水沟、倾斜、棚格、贝壳、抓木器等多功能类铲斗。满足客户不同需求。

Excavator buckets designed and produced independently by Yuan Feng could greatly improve mining efficiency and reduce wear rate. These buckets are made by wear-resistant steel and premium branded bucket teeth and teeth seat.

We develop various products for different clients – including earthwork digging buckets for light duty operations like the loading of sand, the rock digging buckets and scarifiers for heavy duty operations in mining areas, and other buckets for different objects such as garbage, ditch, slope, grid, shell and logs.



PRODUCT DISPLAY 产品展示



• Excavator bucket
挖掘机铲斗

KOMATSU PC650 3.5m³RC



- 更易挖掘，更少磨损
- 高强度耐磨钢材
- 选用世界知名品牌斗齿，齿座
- 15年产品生产经验并拥有完整质量保证体系
- Less Wear Rate, Easier Excavation
- Wear-resistant Steel
- Branded Bucket Teeth
- 15-Year Experience Manufacturer Quality Assurance System

KOBELCO SK380 1.6m³RC



VOLVO EC700 4.0m³RC



VOLVO EC460 2.1m³RC



CAT 336D 1.64m³RC



CAT 349D 2.2m³RC



KOMATSU PC400 2.0m³RC



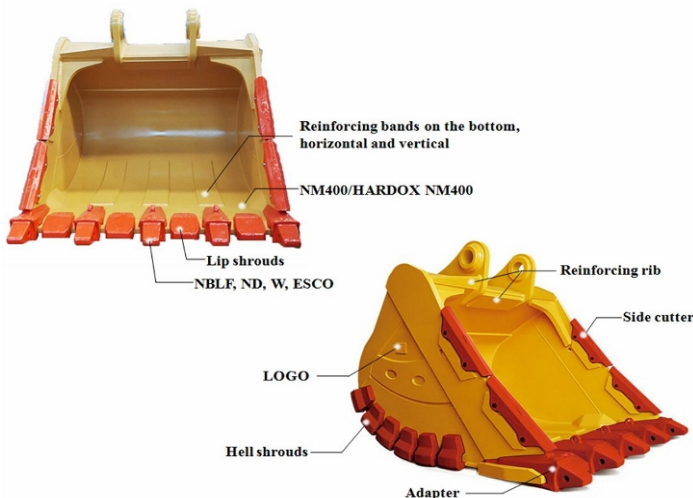
HITACHI ZX870 5.0m³RC



HITACHI ZX360 1.6m³RC



LIEBHERR R9100 7.0m³RC



Rock bucket

Rock bucket is designed for heavy duty operations such as mining and quarrying, materials and rocks of various densities and degrees of abrasiveness (sandstone, granite, diabase, basalt, etc.).

The material is extremely wear-resistant steel (NM400/NM450/NM500), which significantly increases the service life. Models are equipped with high-strength external and internal protection elements. Reinforced surfaces between the teeth, cheek and side seam protection, reinforced inner side plates, heavy-duty thrust beam, special overlays on the knife and cheek - all this provides strength and stability at maximum loads.

- NM450 main blade and NM400 side blade
- Adapters and teeth are selected from mainstream brands such as NBLF, ND, and ESCO. Add protective lip shrouds
- Cast wing shrouds for optimum wear protection
- Lip and beam gussets provide strength in high stress areas
- 4 piece side protection
- The bottom is protected by hell shrouds



Skeleton bucket



Skeleton buckets are trusted for productivity and reliability. Our Skeleton bucket is engineered to be one of the most durable offerings on the market - increasing productivity by simplifying on-site material sorting. Features and Benefits:

- NM400 ribs - available in custom spacing
- Durable NM400 plate steel lip for reliability
- Cast wing shrouds for optimum wear protection
- Lip and beam gussets provide strength in high stress areas
- 4 piece side protection



Standard bucket

Standard buckets are widely used in various conventional working conditions, and high-strength steel is selected. The shallower and wider design is easy to dig and dump, which greatly improves production efficiency.

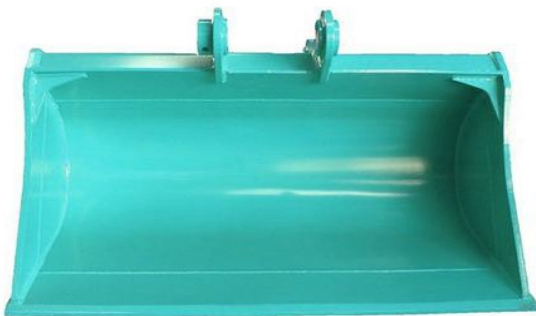
- Density of teeth
- Side cutters are easy to cut edges
- wider and shallower
- The blade has a bevel

The material for the production is high-strength steel, which endows the original product with high strength and wear resistance over a long period of operation. The multi-layer construction and powerful cutting edge ensure successful completion of tasks even in difficult conditions.

Heavy-duty design for high performance

Versatile models of various widths and capacities, compatible with any excavator equipment

Designed to function perfectly in all conditions and can handle a wide variety of applications, from abrasive materials to sticky dirt.



Clean bucket

Clean buckets are widely used for landscaping and cleaning of territories. Models manufactured by Professional are compatible with a wide range of excavator equipment. All products are certified and manufactured in accordance with high international standards.

Products of this type are used to solve problems related to:

With terrain planning, including final surface leveling
With loading and unloading of light bulk materials: peat, slag, etc.

With the opening and movement of plant soil
With canal cleaning and maintenance

With the cleaning of territories from garbage
With slope planning

- No teeth, easy to clean
- Custom width



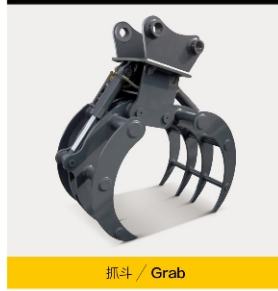
PRODUCT DISPLAY 产品展示

• Other product
其他产品

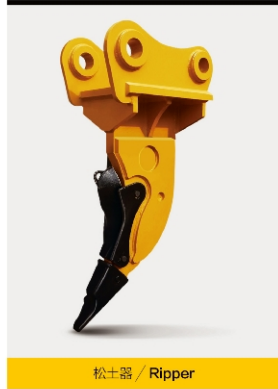


抓斗 / Grab

- 特殊功能类工作装置
- 专业研发团队
- 研发、生产、销售全方位服务
- 完善的售后服务
- Buckets for Special Environments
- Professional Team
- Research, Manufacture, and Marketing
- Perfect After-sales Service



抓斗 / Grab



松土器 / Ripper



格斗 / Grid bucket



抓斗 / Grab



格斗 / Grid bucket



快速连接器 / Quick connector



松土器 / Ripper



连杆 / Connecting rod

05 / 06

创新致远 品质长升
Yuan Feng Construction Machinery

Other products

- Mini bucket (custom width and size)
- Ripper
- H link
- Grab
- Quick coupler
- Adapter
- Teeth

YF YUAN FENG
Construction Machinery



15 Years
Experience

YF

Xuzhou YF Bucket Machinery Co., Ltd.

Add: No. 12, Niushan Road, Tongshan District, Xuzhou City

Tel: +86 516 8777 6028

WeChat/Whatsapp/Skype: +86 189 1347 6028

Email: info@yfbucket.com ;